

World Journal of *Clinical Oncology*

World J Clin Oncol 2024 October 24; 15(10): 1256-1382



Contents

Monthly Volume 15 Number 10 October 24, 2024

EDITORIAL

- 1256 Precision at scale: Machine learning revolutionizing laparoscopic surgery
Ardila CM, González-Arroyave D
- 1264 Inflammatory and nutritional markers in colorectal cancer: Implications for prognosis and treatment
Tez M

ORIGINAL ARTICLE

Observational Study

- 1269 Investigation and analysis of the status of cancer health popularization in China, 2023
Hu HT, Jiang YJ, Shao XX, Lu YM, Tian YT, Xu Q

Clinical and Translational Research

- 1280 Comprehensive assessment of the association between tumor-infiltrating immune cells and the prognosis of renal cell carcinoma
Wei GH, Wei XY, Fan LY, Zhou WZ, Sun M, Zhu CD

Basic Study

- 1293 Banxia xiexin decoction prevents the development of gastric cancer
Zu GX, Sun KY, Liu XJ, Tang JQ, Huang HL, Han T

CASE REPORT

- 1309 Acute severe hypokalemia caused by treatment of tongue squamous cell carcinoma with docetaxel and cisplatin: A case report
Jiang HM, Sun R, Ning BJ, Yang XQ, Zhu XJ
- 1315 Nursing of a patient with multiple primary cancers: A case report and review of literature
Liu D, Li SC
- 1324 Cervical myeloid sarcoma as an initial clinical manifestation: Four case reports
Li JK, Wang XX, Fu JJ, Zhang DD
- 1333 Perioperative management of postoperative sigmoid colon cancer complicated by a large abdominal wall defect: A case report
Zhu YL, Li R, Cheng YG, Wang YF
- 1342 Hypofractionated and intensity-modulated radiotherapy combined with systemic therapy in metastatic hepatocellular carcinoma: A case report
Chen QQ, Chen CQ, Liu JK, Huang MY, Pan M, Huang H

- 1351** Disitamab vedotin combined with apatinib in gastric cancer: A case report and review of literature
Li XQ, Yang J, Liu B, Han SM
- 1359** Vaginal clear cell adenocarcinoma in Herlyn-Werner-Wunderlich syndrome: A case report
Lei XG, Zhang H
- 1366** Robot-assisted partial splenectomy for benign splenic tumors: Four case reports
Xue HM, Chen P, Zhu XJ, Jiao JY, Wang P

LETTER TO THE EDITOR

- 1376** Dysbiosis and colonic adenoma: The lethal link?
Govindarajan KK
- 1379** Gastric metastasis of small cell lung carcinoma: A rare but noteworthy entity to consider
Dursun CU, Tugcu AO, Dogru GD

ABOUT COVER

Editorial Board of *World Journal of Clinical Oncology* Amit Sehrawat, MBBS, MD, DrNB, MNAMS, ECMO, Assistant Professor of Medical Oncology Haematology All India Institute of Medical Sciences (AIIMS), Rishikesh, Uttarakhand 249203, India. dramitsehrawat@gmail.com

AIMS AND SCOPE

The primary aim of *World Journal of Clinical Oncology* (*WJCO*, *World J Clin Oncol*) is to provide scholars and readers from various fields of oncology with a platform to publish high-quality basic and clinical research articles and communicate their research findings online.

WJCO mainly publishes articles reporting research results and findings obtained in the field of oncology and covering a wide range of topics including art of oncology, biology of neoplasia, breast cancer, cancer prevention and control, cancer-related complications, diagnosis in oncology, gastrointestinal cancer, genetic testing for cancer, gynecologic cancer, head and neck cancer, hematologic malignancy, lung cancer, melanoma, molecular oncology, neurooncology, palliative and supportive care, pediatric oncology, surgical oncology, translational oncology, and urologic oncology.

INDEXING/ABSTRACTING

The *WJCO* is now abstracted and indexed in PubMed, PubMed Central, Emerging Sources Citation Index (Web of Science), Reference Citation Analysis, China Science and Technology Journal Database, and Superstar Journals Database. The 2024 Edition of Journal Citation Reports® cites the 2023 journal impact factor (JIF) for *WJCO* as 2.6; JIF without journal self cites: 2.6; 5-year JIF: 2.7; JIF Rank: 175/322 in oncology; JIF Quartile: Q3; and 5-year JIF Quartile: Q3.

RESPONSIBLE EDITORS FOR THIS ISSUE

Production Editor: *Yu-Qing Zhao*; Production Department Director: *Xu Guo*; Cover Editor: *Xu Guo*.

NAME OF JOURNAL

World Journal of Clinical Oncology

ISSN

ISSN 2218-4333 (online)

LAUNCH DATE

November 10, 2010

FREQUENCY

Monthly

EDITORS-IN-CHIEF

Hiten RH Patel, Stephen Safe, Jian-Hua Mao, Ken H Young

EDITORIAL BOARD MEMBERS

<https://www.wjgnet.com/2218-4333/editorialboard.htm>

PUBLICATION DATE

October 24, 2024

COPYRIGHT

© 2024 Baishideng Publishing Group Inc

INSTRUCTIONS TO AUTHORS

<https://www.wjgnet.com/bpg/gerinfo/204>

GUIDELINES FOR ETHICS DOCUMENTS

<https://www.wjgnet.com/bpg/GerInfo/287>

GUIDELINES FOR NON-NATIVE SPEAKERS OF ENGLISH

<https://www.wjgnet.com/bpg/gerinfo/240>

PUBLICATION ETHICS

<https://www.wjgnet.com/bpg/GerInfo/288>

PUBLICATION MISCONDUCT

<https://www.wjgnet.com/bpg/gerinfo/208>

ARTICLE PROCESSING CHARGE

<https://www.wjgnet.com/bpg/gerinfo/242>

STEPS FOR SUBMITTING MANUSCRIPTS

<https://www.wjgnet.com/bpg/GerInfo/239>

ONLINE SUBMISSION

<https://www.f6publishing.com>



Clinical and Translational Research

Comprehensive assessment of the association between tumor-infiltrating immune cells and the prognosis of renal cell carcinoma

Guo-Hao Wei, Xi-Yi Wei, Ling-Yao Fan, Wen-Zheng Zhou, Ming Sun, Chuan-Dong Zhu

Specialty type: Oncology

Provenance and peer review:

Unsolicited article; Externally peer reviewed.

Peer-review model: Single blind

Peer-review report's classification

Scientific Quality: Grade B, Grade C

Novelty: Grade B, Grade B

Creativity or Innovation: Grade B, Grade B

Scientific Significance: Grade A, Grade B

P-Reviewer: Zhou ZL

Received: July 4, 2024

Revised: August 7, 2024

Accepted: August 13, 2024

Published online: October 24, 2024

Processing time: 86 Days and 14.6 Hours



Guo-Hao Wei, Ling-Yao Fan, Wen-Zheng Zhou, Ming Sun, Chuan-Dong Zhu, Department of Oncology, The Second Hospital of Nanjing, Affiliated to Nanjing University of Chinese Medicine, Nanjing 210003, Jiangsu Province, China

Xi-Yi Wei, The State Key Laboratory of Reproductive, Department of Urology, The First Affiliated Hospital of Nanjing Medical University, Nanjing 210003, Jiangsu Province, China

Corresponding author: Chuan-Dong Zhu, MD, PhD, Assistant Professor, Chief Doctor, Department of Oncology, The Second Hospital of Nanjing, Affiliated to Nanjing University of Chinese Medicine, No. 1-1 Zhongfu District, Nanjing 210003, Jiangsu Province, China.
zhucd@njucm.edu.cn

Abstract

BACKGROUND

According to current statistics, renal cancer accounts for 3% of all cancers worldwide. Renal cell carcinoma (RCC) is the most common solid lesion in the kidney and accounts for approximately 90% of all renal malignancies. Increasing evidence has shown an association between immune infiltration in RCC and clinical outcomes. To discover possible targets for the immune system, we investigated the link between tumor-infiltrating immune cells (TIICs) and the prognosis of RCC.

AIM

To investigate the effects of 22 TIICs on the prognosis of RCC patients and identify potential therapeutic targets for RCC immunotherapy.

METHODS

The CIBERSORT algorithm partitioned the 22 TIICs from the Cancer Genome Atlas cohort into proportions. Cox regression analysis was employed to evaluate the impact of 22 TIICs on the probability of developing RCC. A predictive model for immunological risk was developed by analyzing the statistical relationship between the subpopulations of TIICs and survival outcomes. Furthermore, multivariate Cox regression analysis was used to investigate independent factors for the prognostic prediction of RCC. A value of $P < 0.05$ was regarded as statistically significant.

RESULTS

Compared to normal tissues, RCC tissues exhibited a distinct infiltration of im-

mune cells. An immune risk score model was established and univariate Cox regression analysis revealed a significant association between four immune cell types and the survival risk connected to RCC. High-risk individuals were correlated to poorer outcomes according to the Kaplan-Meier survival curve ($P = 1 \times 10^{-5}$). The immunological risk score model was demonstrated to be a dependable predictor of survival risk (area under the curve = 0.747) *via* the receiver operating characteristic curve. According to multivariate Cox regression analysis, the immune risk score model independently predicted RCC patients' prognosis (hazard ratio = 1.550, 95%CI: 1.342–1.791; $P < 0.001$). Finally, we established a nomogram that accurately and comprehensively forecast the survival of patients with RCC.

CONCLUSION

TIICs play various roles in RCC prognosis. The immunological risk score is an independent predictor of poor survival in kidney cancer cases.

Key Words: Renal cell carcinoma; Tumor-infiltrating immune cells; Prognosis; Immune risk score model; Nomogram

©The Author(s) 2024. Published by Baishideng Publishing Group Inc. All rights reserved.

Core Tip: Renal cell carcinoma (RCC) is a prevalent form of renal cancer that typically arises subtly and is distinguished by its propensity for easy metastasis and poor prognosis. Patients with advanced RCC frequently exhibit low overall survival rates owing to the extensive spread of cancer. However, the recent advent of immunotherapy has resulted in an improvement in the median overall survival for all risk groups of patients, making it imperative to identify potential immune targets. Our research has led to the development of an immune risk assessment model that underscores the critical role of tumor-infiltrating immune cells-based immune models in the prognostic prediction and clinical management of RCC.

Citation: Wei GH, Wei XY, Fan LY, Zhou WZ, Sun M, Zhu CD. Comprehensive assessment of the association between tumor-infiltrating immune cells and the prognosis of renal cell carcinoma. *World J Clin Oncol* 2024; 15(10): 1280-1292

URL: <https://www.wjgnet.com/2218-4333/full/v15/i10/1280.htm>

DOI: <https://dx.doi.org/10.5306/wjco.v15.i10.1280>

INTRODUCTION

Renal cancer is a highly prevalent cancer that causes malignant tumors worldwide. Its prevalence has been increasing over the past decade, accounting for up to 2%–3% of all newly diagnosed tumor cases[1,2]. Histologically, renal cell carcinoma (RCC) is a prominent subtype of renal cancer, comprising approximately 85% of the total renal cancer cases[3–5]. Despite great developments in conception, diagnosis, surgery, and various tumor drug treatments, the clinical results of RCC are still insufficient. Therefore, the accurate assessment of patient survival risk and prognostic prediction is critical.

The human immune system effectively protects the body from both exogenous and endogenous diseases. When uncontrolled proliferation of mutated or abnormal cells occurs in an organism, invading and spreading throughout the body, the immune system effectively recognizes the differences between tumors and healthy tissues, thereby secreting relevant signals to inhibit tumor growth. However, this process may be co-opted by the cancer cells. Research has shown that during tumor progression, cancer cells take advantage of oncogenic mutations in the immune system to help escape immune system attack and promote growth[6,7]. These findings indicate that there are diverse immune escape mechanisms by which tumor cells reduce killing by the immune system during progression. In addition, during tumor progression, changes in immune phenotype and composition cause secondary changes in immune responses within and outside the tumor microenvironment (TME)[8]. Reconstruction of tumor immunity occurs in a wide range of tumor types. Among them, RCC has a high metastatic rate and poor prognosis, with 30% of patients already having metastases at the first diagnosis, and nearly 30% of the remaining patients having metastatic foci detected during the course of follow-up [9]. This characteristic is closely related to the interactions among the stroma, immune cells, and tumor cells in the RCC immune microenvironment, which leads to reconstruction of the microenvironment[10]. Research on the complexity of the immune heterogeneity of RCC with respect to this characteristic will help us clinically assess tumor heterogeneity and thus facilitate the development of more effective and personalized therapies.

The TME is highly heterogeneous. Previous research has revealed that dynamic interactions between tumor cells and their microenvironment promote the formation, progression, metastasis, and development of drug resistance in solid tumors[11]. There is substantial evidence that the composition of multiple immune cells within the microenvironment affects antitumor immunity and immunotherapeutic responsiveness. An in-depth understanding of the TME, particularly the characteristics of tumor-infiltrating immune cells (TIICs), is essential for identifying critical regulatory molecules for tumor development and immunotherapy.

Most previous studies on RCC prognostic modeling have included only traditional clinical information, and the model has limitations such as poor sensitivity and lag, which makes it impossible to comprehensively assess the clinical application value of the model[12-14]. CIBERSORT is an algorithm that employs gene expression data to analyze barcode gene values of expression and estimate the components of immune cells. The CIBERSORT algorithm is more efficient and precise than traditional immunohistochemical and flow cytometry approaches for calculating the relative proportions of 22 types of invasive TIICs[15]. Based on the effectiveness of this methodology, numerous studies have recently applied it to examine whether patient prognosis is affected by the 22 TIICs subtypes[16-18].

Hence, our study aimed to explore the relationship between TIICs and RCC. To investigate potential relationships between immunotherapy and RCC patients, we constructed an immune risk score methodology to prognostic prediction and thoroughly examined the impact of 22 TIICs subgroups on the prognosis of RCC patients by utilizing the CIBERSORT algorithm. The result provided a new avenue for the development of prognostic prediction models for RCC patients as well as the identification of therapeutic targets for immunotherapy.

MATERIALS AND METHODS

Data acquisition

The entire transcriptome data of RCC utilized in this investigation were obtained from The Cancer Genome Atlas (TCGA) database. The research project encompassed a cohort of 957 patients diagnosed with RCC. The transcriptome data was obtained from the TCGA database using the R package "TCGA-Assembler". This dataset consisted of 128 cases of normal tissue and 829 cases of malignant tissue. Furthermore, we collected essential clinical information, including age, sex, TNM stage, grade, survival status, and survival duration, from a total of 829 patients diagnosed with RCC. The R software's "limma" package was executed to rectify the transcriptome data.

Assessment of immune infiltration

The deconvolution algorithm CIBERSORT divides 547 tag gene expression levels to describe the immune cell composition in tissues. In this research, the relative proportions of 22 TIICs in the transcriptome data of corrected RCC patients were estimated *via* this algorithm. We uploaded the transcriptome to the CIBERSORT website (<http://cibersort.stanford.edu/>) and configured the algorithm to process 1000 rows. The criterion to calculate statistical significance was set at a *P* value < 0.05.

Statistical analysis

The analyses were conducted *via* Statistical Package for the Social Sciences 23.0 and R 3.5.3. Statistical tests were performed as two-sided tests. The criterion to calculate statistical significance was set at a *P* value < 0.05. The Kaplan-Meier curve was assessed *via* the log-rank test to examine the correlation between immune cell infiltration and overall survival. The sensitivity and specificity of the recurrence prediction model were analyzed using time-dependent receiver operating characteristic (ROC) curves. Independent impact factors linked to survival were examined using a multivariate Cox regression model, whereas the impacts of individual variables on survival were examined using a one-factor Cox regression model. A nomogram was generated to represent the regression coefficients in the Cox analysis.

RESULTS

Distribution of TIICs

With the CIBERSORT algorithm, we conducted immune cell infiltration analysis to facilitate the identification of relevant immune cell levels in all RCC patients in the TCGA database. The dataset included 829 patients with RCC and 128 healthy tissues. The clinicopathological characteristics of the samples are shown in Table 1. Figure 1A-C display the arrangement of TIICs in RCC samples and the relationship with various immune cell subtypes. The violin diagram demonstrates the main advantages in composition between normal and RCC tissues in 22 TIICs (Figure 1D). The invasion of immune cells, such as native B cells, plasma cells, the alternating-activated subset (M2) macrophages, dendritic cells, and eosinophils, did not change between normal tissues and RCC tissues. Further analysis revealed that the normal activated subset (M1) macrophages, M2 macrophages, monocytes, and T cells exhibited the strongest correlation with tumor advancement (Figure 2). On the basis of the above analysis, we explored the types and distributions of TIICs subpopulations that are closely related to RCC, which provides potential research directions for clinical immunotherapy.

Univariate and multivariate Cox regression analyses to construct an immune risk score

We analyzed 22 immune cell types using a univariate Cox regression technique to identify a subset that was significantly related to RCC survival (Table 2). *P* < 0.01 was implemented as the screening threshold. Results suggested that the risk of RCC survival was related to macrophages M1 and M2, CD4⁺ memory activated T cells, and follicular helper T cells. Based on the assumption that these four immune cells significantly influence the survival risk of RCC patients, an immune risk scoring model for these four immune cells was generated *via* the multivariate Cox regression approach (Table 3). A risk score based on the model was assigned to each patient. The patients were separated into high-risk and low-risk groups based on their median risk score. Based on the Kaplan-Meier survival curve analysis, individuals classified in the high-risk category exhibited a significantly unfavorable prognosis (Figure 3A). According to the ROC curve, the risk model

Table 1 Clinical characteristics of patients

Variables	Clinical characters	Numbers
Age in years	≤ 65	343
	> 65	181
Sex	Female	185
	Male	339
T stage	T1	269
	T2	66
	T3	178
	T4	11
M stage	M0	418
	M1	78
	MX	28
N stage	N0	236
	N1	15
	N2	273
Stage	Stage I	263
	Stage II	54
	Stage III	124
	Stage IV	83
Grade	G1	14
	G2	227
	G3	206
	G4	77

The 305 cases of kidney cancer patients lack clinical data.

was useful in forecasting survival risk and had excellent specificity and sensitivity (Figure 3B). Figures 3C-E present the distributions of the immune risk score, patient survival status, and four immune cell types in patients with RCC. The connections between the risk assessments and clinical indicators are presented in Figure 3F.

An impartial predictor of the prognosis for RCC patients was the immunological risk score model

Age, sex, stage, TNM, and risk score were all analyzed using univariate and multivariate Cox regression algorithms (Figure 4A and B) to observe whether the established immune risk scoring model was independent of patient age, sex, stage, and other clinicopathological statistics. Univariate analysis suggested that age, stage, T stage, and the risk score were related to prognosis ($P < 0.05$). Multifactor Cox proportional risk regression was used to construct predictive models. The results of multivariate regression analysis revealed that the risk score, age, stage, and T stage were all independent predictive factors for RCC. To predict patient survival, we constructed a nomogram utilizing the multivariate Cox regression analysis coefficients (Figure 4C).

DISCUSSION

Cancer tissues contain fibroblasts, immune cells, endothelial cells, and a variety of chemokines, growth factors, and cytokines in malignant tumor cells. The TME consists of these components and their interactions, which usually have an inhibitory effect on malignant cells[19,20]. Nevertheless, tumor cells have the ability to evade these inhibitory signals as they spread, utilizing immune cells and other favorable conditions encountered in their own surroundings to facilitate their expansion, infiltration, and metastasis. Research has shown that cancer prognosis is closely associated with the TME, especially TIICs. TIICs can promote tumor growth by providing signals, and this field of research has attracted much attention in recent years[21,22]. Consequently, investigating immune-infiltrating cell subsets to evaluate risk and tumor prognosis is crucial.

Table 2 Results of univariate cox regression analysis for 22 immune cells in renal cell carcinoma

Immune cells	HR	HR 95L	HR 95H	P value
B cells naive	23260.95811	7.327755285	73838733.88	< 0.001
B cells memory	367.0654108	1.02 ^{E-14}	1.32528 ^{E+19}	0.761
Plasma cells	7.884077616	0.471946257	131.7071149	0.151
T cells CD8 ⁺	2.305757787	0.842062146	6.313689546	0.104
T cells CD4 ⁺ memory resting	0.350135006	0.061633114	1.989101538	0.236
T cells CD4 ⁺ memory activated	1100224.032	1157.449769	1045827605	< 0.001
T cells follicular helper	14026508.28	1930.466435	1.01915 ^{E+11}	< 0.001
T cells regulatory	477.9895258	1.97885441	115457.704	0.028
T cells gamma delta	1.185772305	0.027650702	50.85064158	0.929
NK cells resting	14.09528528	0.052612618	3776.224703	0.354
NK cells activated	3.21804095	0.010005648	1034.994197	0.692
Monocytes	4.094791848	0.200859787	83.47773603	0.359
Macrophages M0	0.386593443	0.064142169	2.330050464	0.300
Macrophages M1	1864.763728	50.85250386	68380.97431	< 0.001
Macrophages M2	0.04122243	0.009170583	0.18529779	< 0.001
Dendritic cells resting	0.893700613	0.002682052	297.7946697	0.970
Dendritic cells activated	3.99E-09	2.39 ^{E-24}	6648051.131	0.279
Mast cells resting	0.006154535	4.70 ^{E-05}	0.806155892	0.051
Mast cells activated	2.46 ^{E-06}	4.49 ^{E-18}	1344373.927	0.349
Eosinophils	725332583.3	3.12 ^{E-14}	1.69 ^{E+31}	0.437
Neutrophils	18.26220316	0.311769833	1069.725255	0.162
T cells naive	\	\	\	\

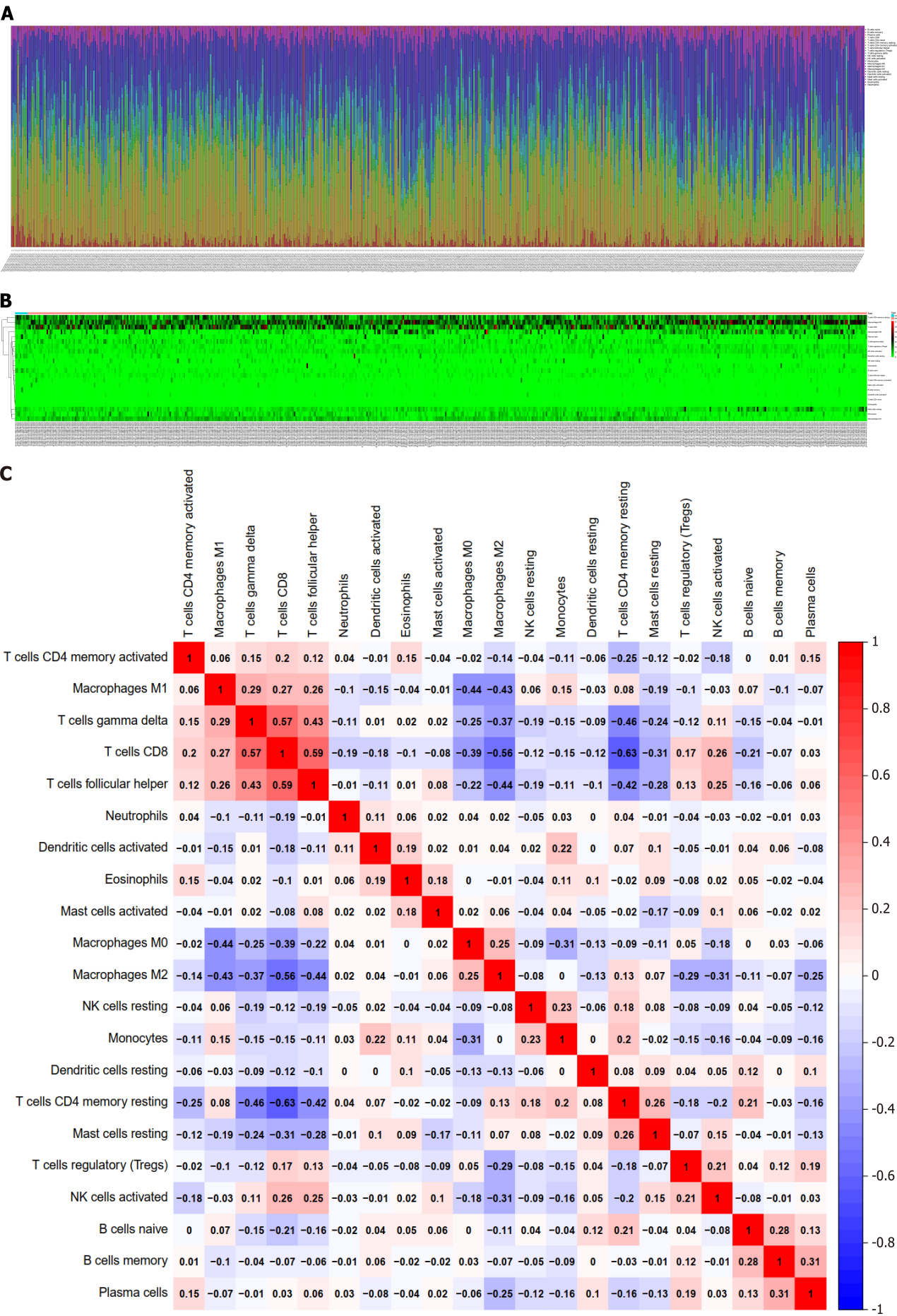
HR 95L: Lower limit of the 95% confidence interval; HR 95H: Upper limit of the 95% confidence interval; NK: Natural killer; HR: Hazard ratio; M1: Normal activated subset; M2: Alternating-activated subset.

Table 3 Results of multivariate cox regression analysis for four immune cells in renal cell carcinoma patients

Immune cells	HR	HR 95L	HR 95H	P value
T cells CD4 ⁺ memory activated	72976.763	55.302	96300449.399	< 0.05
T cells follicular helper	3049.111	0.102	90834209.409	< 0.05
Macrophages M1	296.374	4.843	18138.002	< 0.05
Macrophages M2	0.230	0.036	1.452	< 0.05

HR 95L: Lower limit of the 95% confidence interval; HR 95H: Upper limit of the 95% confidence interval; HR: Hazard ratio; M1: Normal activated subset; M2: Alternating-activated subset.

By deconvoluting data derived from an extensive array of samples, we performed an exhaustive and thorough evaluation of immune cell infiltration in RCC. This study illustrated the diversity of immune cells in RCC patients as well as the identification of particular TIICs. It is well recognized that different immune cell subgroups locally penetrate RCC [23]. These distinct immune cells provide a unique "immune signature map" for each patient and provide novel proposals for specialized immunotherapy for RCC in the future. First, we explored immune cell infiltration in all RCC patients *via* the TCGA database. The difference analysis results indicated that native B cells, plasma cells, M2 macrophages, dendritic cells, and eosinophils differentially infiltrated healthy and RCC tissues. ($P < 0.05$). These outcomes correspond with conclusions from earlier research. The number of eosinophils and dendritic cells is greater in the blood of RCC patients than in that of normal individuals[24]. The proportions of tumor-infiltrating lymphocytes, native B cells, and plasma cells are increased[25]. In addition, the proportion of M2 macrophages is increased in RCC tissues, and the increased



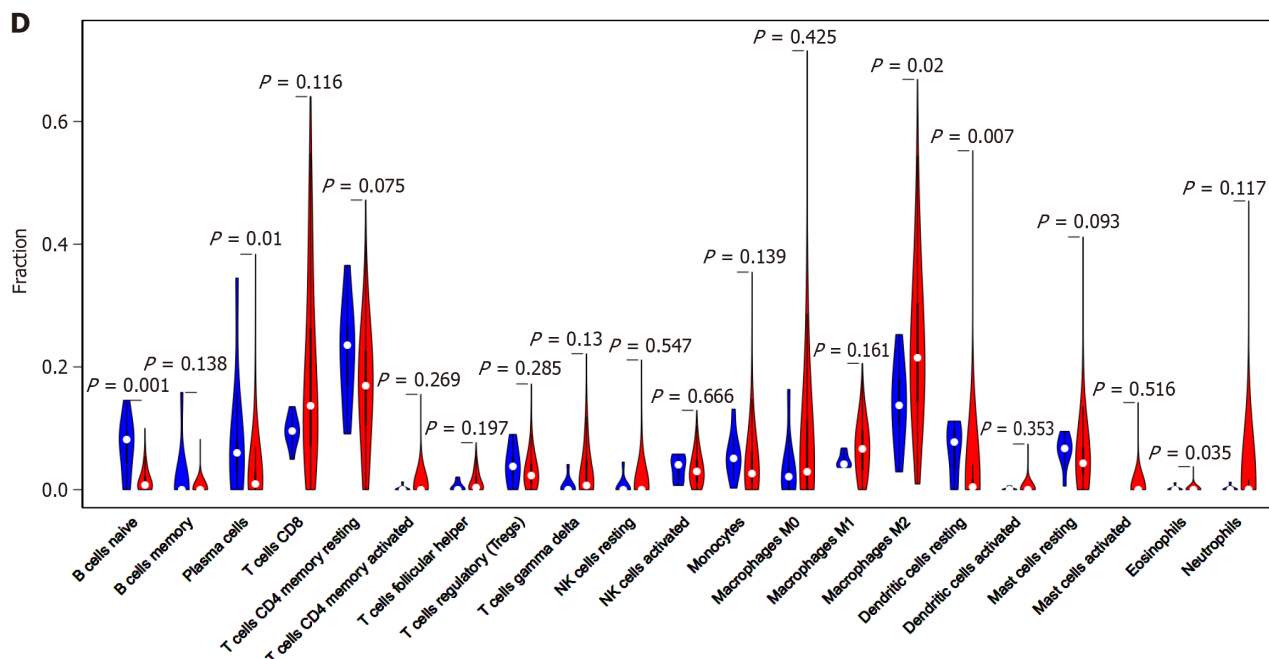


Figure 1 Analysis of the expression levels of 22 types of tumor-infiltrating immune cells and their correlation in 829 renal cell carcinoma patients and 128 normal controls. A and B: Expression of 22 tumor-infiltrating immune cells (TIICs) in renal cell carcinoma (RCC) and normal samples; C: Correlation analysis of 22 TIICs and immune cells between 829 RCC samples; D: Differences in the composition of TIICs between normal tissue and RCC tissue in 829 RCC samples.

proportion of this subpopulation significantly promotes the production of inflammatory cytokines and facilitates tumor growth[26].

A thorough investigation was conducted into the relationship between the prognosis of RCC patients and the subpopulations of TIICs. Additional analysis revealed that CD4⁺ memory-activated T cells, follicular helper T cells, M1 macrophages, and M2 macrophages were associated with RCC survival risk. Tumor-associated immune cells are considered important factors for predicting the prognosis of patients with tumors[27]. Previous studies revealed that infiltrating CD4⁺ T cells could promote RCC cell proliferation through the TGFβ1/YBX1/HIF2α axis both *ex vivo* and *in vivo*[28]. Thompson *et al*[29] observed that the interaction between programmed cell death 1 (PD-1) and B7-H1 expressed by activated T-cell PD-1 receptor immune cells may promote tumor progression by promoting immune dysfunction in patients with RCC, which is associated with the survival risk of the disease. In addition, Menard *et al*[30] demonstrated that an increased proportion of CD4⁺ T cells in RCC tissues was significantly associated with RCC death according to flow analysis ($P = 0.004$). The results of our analysis further confirmed that an increased proportion of CD4⁺ T cells was negatively associated with the prognosis of patients with RCC. Furthermore, studies have suggested that helper T cells, which are highly immunosuppressive, play important roles in organismal immunomodulation and the promotion of RCC immune escape[31]. This finding is consistent with our conclusion of a low overall survival rate in RCC patients with high infiltration of helper T cells.

Multiple studies have demonstrated that macrophages have significant functions in the inflammatory response throughout the process of tumor formation and growth[32,33]. In cancer and inflammation, the primary macrophage subsets are categorized into two distinct types: M1 and M2. M1 macrophages have anticancer properties by facilitating the host's immune response against microbes and cancer cells. In contrast, M2 macrophages possess anti-inflammatory characteristics and promote tumor growth, which could contribute to tumor growth and migration. There is plenty of evidence that tumor-associated macrophages (TAMs) are related to tumor progression and metastasis. Tumors are able to utilize the remodeling ability of the macrophage matrix, allowing them to enter the surrounding matrix and migrate through it. However, TAMs are more highly expressed in highly malignant tumors. These findings reveal that high numbers of TAMs in the TME are more likely to predict adverse outcomes of the disease. Recent research has demonstrated that macrophages have a vital role in the progression of RCC, and specifically, M1 macrophages are strongly linked to the stage of RCC and the grade of tumor histology. Geissler *et al*[27] reported the phenotypic characteristics of macrophages in RCC. They reported that the number of TAMs slightly increased with the degree of dedifferentiation. The ratio of macrophages to T cells was highest in G1-stage tumors. In addition, Yang *et al*[34] found that macrophages were more easily absorbed into RCC tissues than into nontumor tissues. The results revealed a new mechanism by which macrophages in the RCC TME increase RCC metastasis by activating AKT/mTOR signaling. These results further suggest that immune monitoring of RCC patients could be an effective tool for predicting the prognosis of RCC patients.

Additionally, a multivariate Cox regression method was employed to develop an immunological risk score model for the four categories of immune cells. The Kaplan-Meier survival curve demonstrated a significant association between high-risk individuals and unfavorable outcomes ($P = 1 \times 10^{-5}$). With an area under the curve value of 0.747, the ROC curve demonstrated the validity of the immunological risk evaluation model in forecasting the risk of survival. A multivariate

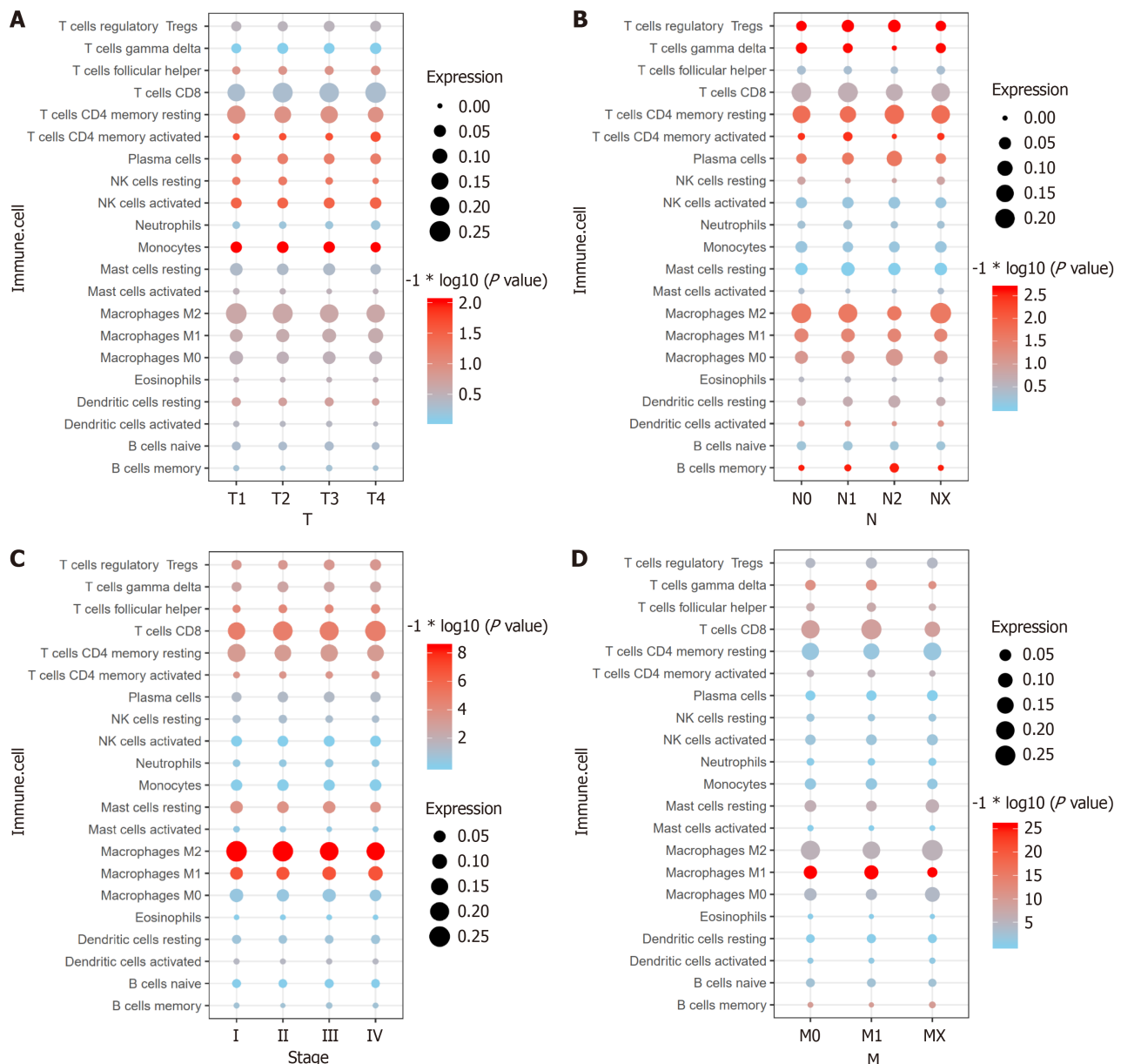
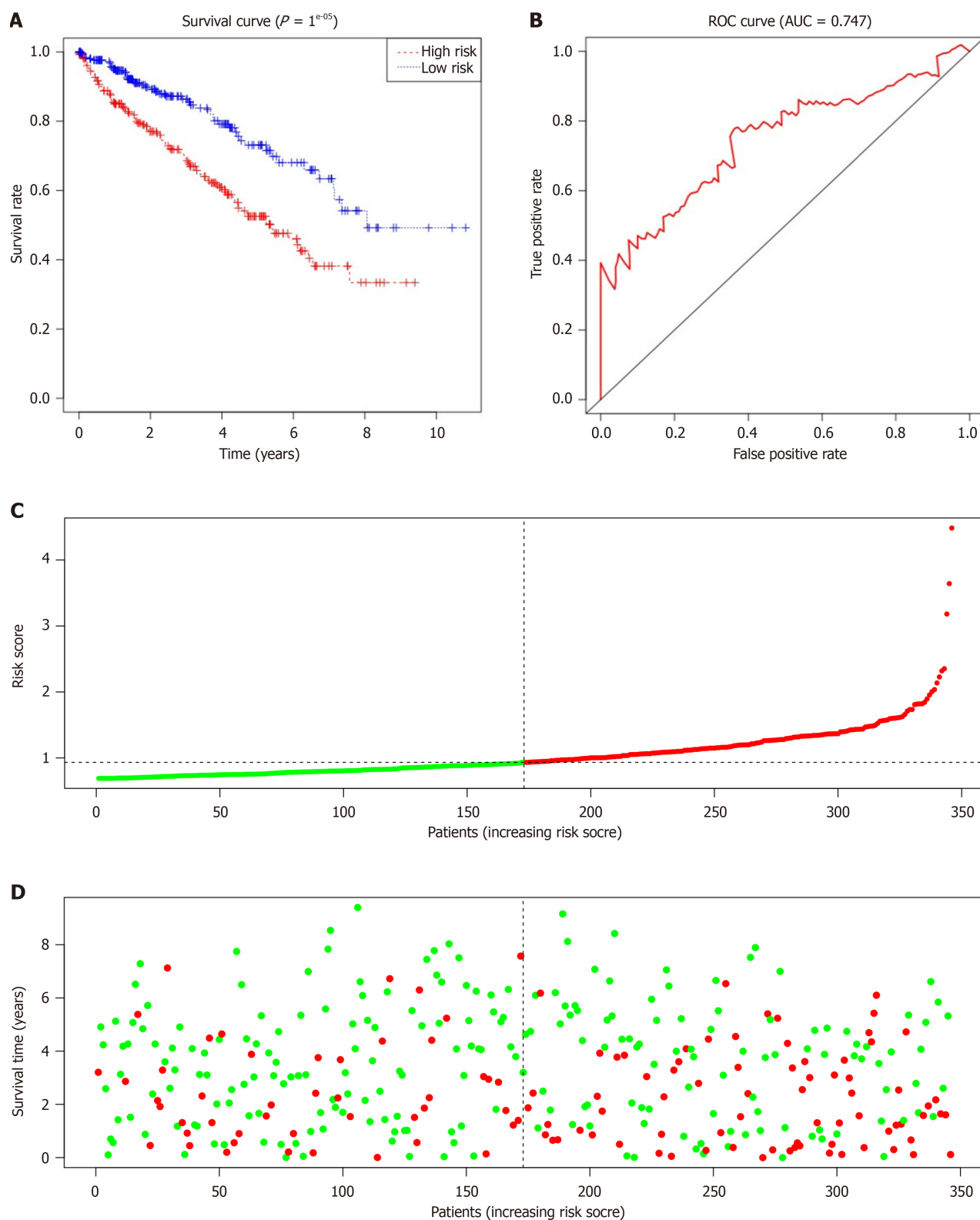


Figure 2 Correlation analysis between TNM stage and 22 tumor-infiltrating immune cells in 829 renal cell carcinoma patients. A: Tumor stage and the expression of 22 tumor-infiltrating immune cells (TIICs) in 829 renal cell carcinoma (RCC) patients; B: Node stage and the expression of 22 TIICs in 829 RCC patients; C: Metastasis stage and the expression of 22 TIICs in 829 RCC patients; D: Pathologic stage and the expression of 22 TIICs in 829 RCC patients. NK: Natural killer; M1: Normal activated subset; M2: Alternating-activated subset.

Cox regression analysis was performed on the risk score, age, sex, stage, and TNM stage. Research studies demonstrated that the immunological risk score model was a significant and separate factor in predicting the prognosis of RCC patients (hazard ratio = 1.550, 95%CI: 1.342–1.791; $P < 0.001$). A nomogram was developed to accurately forecast the overall survival of patients with RCC by utilizing the outcomes of a multivariate Cox regression assessment. Currently, the prognostic judgment of patients after RCC is mainly based on TNM staging[35]. As a visually and clinically valuable medical prediction model, a nomogram can objectively evaluate new predictive variables and provide a more accurate and personalized prognostic assessment.

Due to the rapid evolution of high-throughput sequencing technologies, many tumor markers associated with tumor prognosis have been identified, but the number of these markers is still limited, and their value for clinical application still needs to be considered. Hence, it is imperative to investigate additional therapeutic targets to accurately forecast the prognosis of patients with RCC and to guide the development of clinically individualized treatment regimens. Compared to other solid tumors, RCC is a highly heterogeneous tumor with wide variations in therapeutic efficacy, and relevant specific therapeutic targets are still lacking. In the context of precision tumor therapy and multiline therapy, rational individualized selection of diverse treatments has become an important clinical issue for maximizing the efficacy of comprehensive treatment for advanced RCC. Traditional cancer treatments have many drawbacks, such as pathological tissues that cannot be completely resected by surgery, leading to recurrence, drug resistance, or related serious adverse reactions in patients during radiotherapy and chemotherapy. In addition, the poor prognosis and easy metastasis of RCC make it difficult to effectively control the disease. Currently, immunotherapy is recognized as one of the most promising



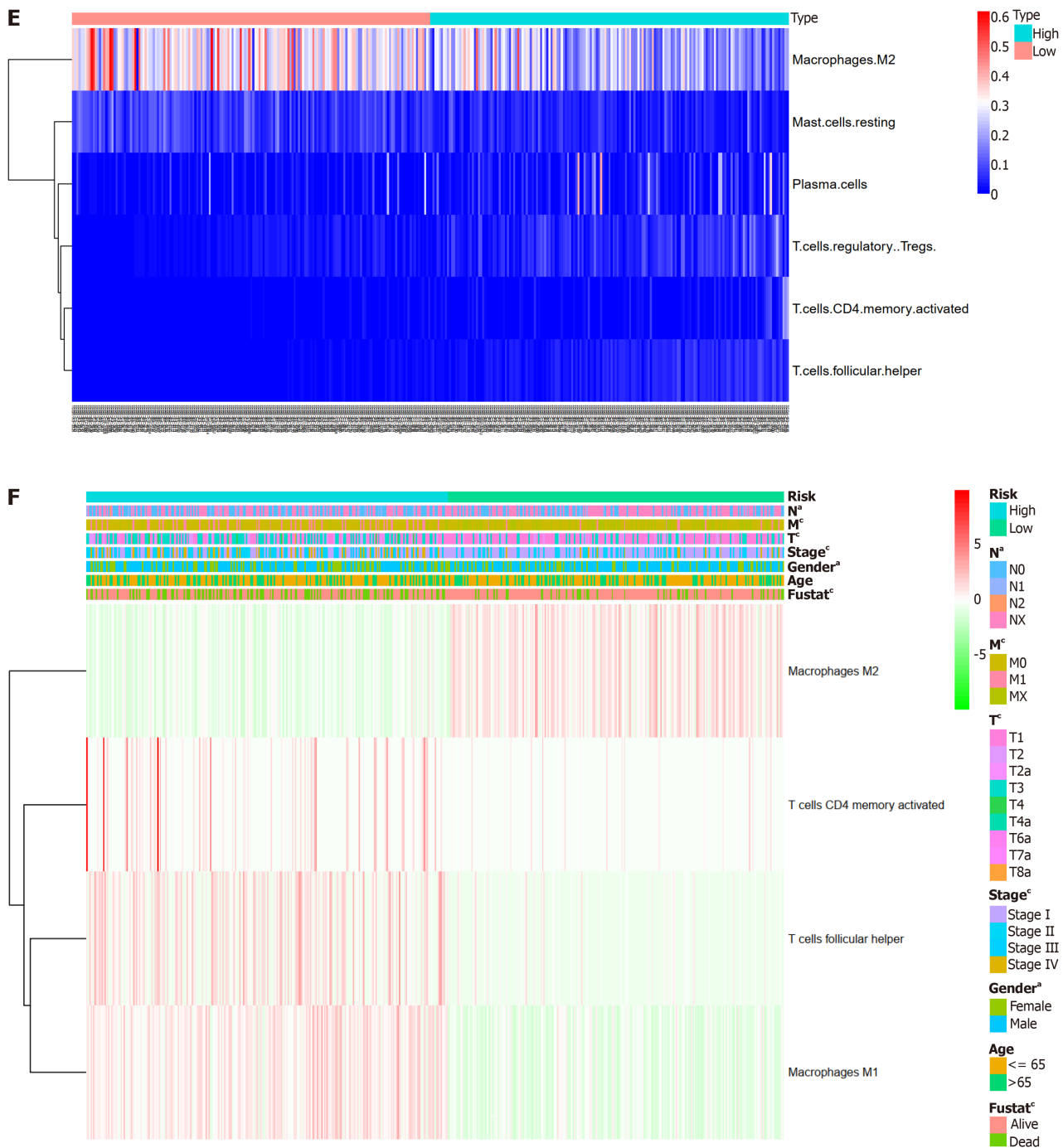


Figure 3 Univariate Cox regression analysis for factors affecting overall survival. A: Kaplan-Meier survival curve of overall survival between the high-risk and low-risk groups; B: Receiver operating characteristic (ROC) curve area under the curve (AUC) statistics assess the predictive capability of the immune risk score model; C: Distribution of the immune risk score in renal cell carcinoma (RCC) patients; D: Distribution of the survival status of RCC patients; E: Distribution of five immune cells in the high-risk and low-risk groups; F: Correlation between the immune risk score and clinical indicators.

therapeutic tools for RCC treatment. Since 2005, with the introduction of a variety of antitumor neovascularization tyrosine kinase inhibitors, targeted therapy has become the main systemic treatment for RCC[36]. Immune combinations (pabrolizumab + axitinib, avelumab + axitinib, nabulizumab + cabozantinib, and pabrolizumab + lenvatinib) and dual immune combinations (nabulizumab + ipilizumab) have been approved for the treatment of RCC. Macrophages, CD4⁺ T cells and helper T cells play crucial roles in cancer immunotherapy. Therefore, we explored the role of four critical TIICs immune subpopulations, M1 macrophages, M2 macrophages, CD4⁺ T cells and helper T cells in a model for RCC immune risk assessment. This model was confirmed as an independent predictor of RCC. In other words, the immune risk assessment model is a reliable indicator for determining RCC prognosis before immunotherapy. These findings suggest that patients with RCC with high levels of M1 macrophages, M2 macrophages, CD4⁺ T cells and helper T cells may benefit from immunotherapy. At present, only a few studies have modeled and predicted the prognosis of RCC patients *via* immune risk scores. However, in other fields, an increasing number of researchers have realized the importance of establishing immune risk score models. Research has shown that the prognostic immune risk scoring model established

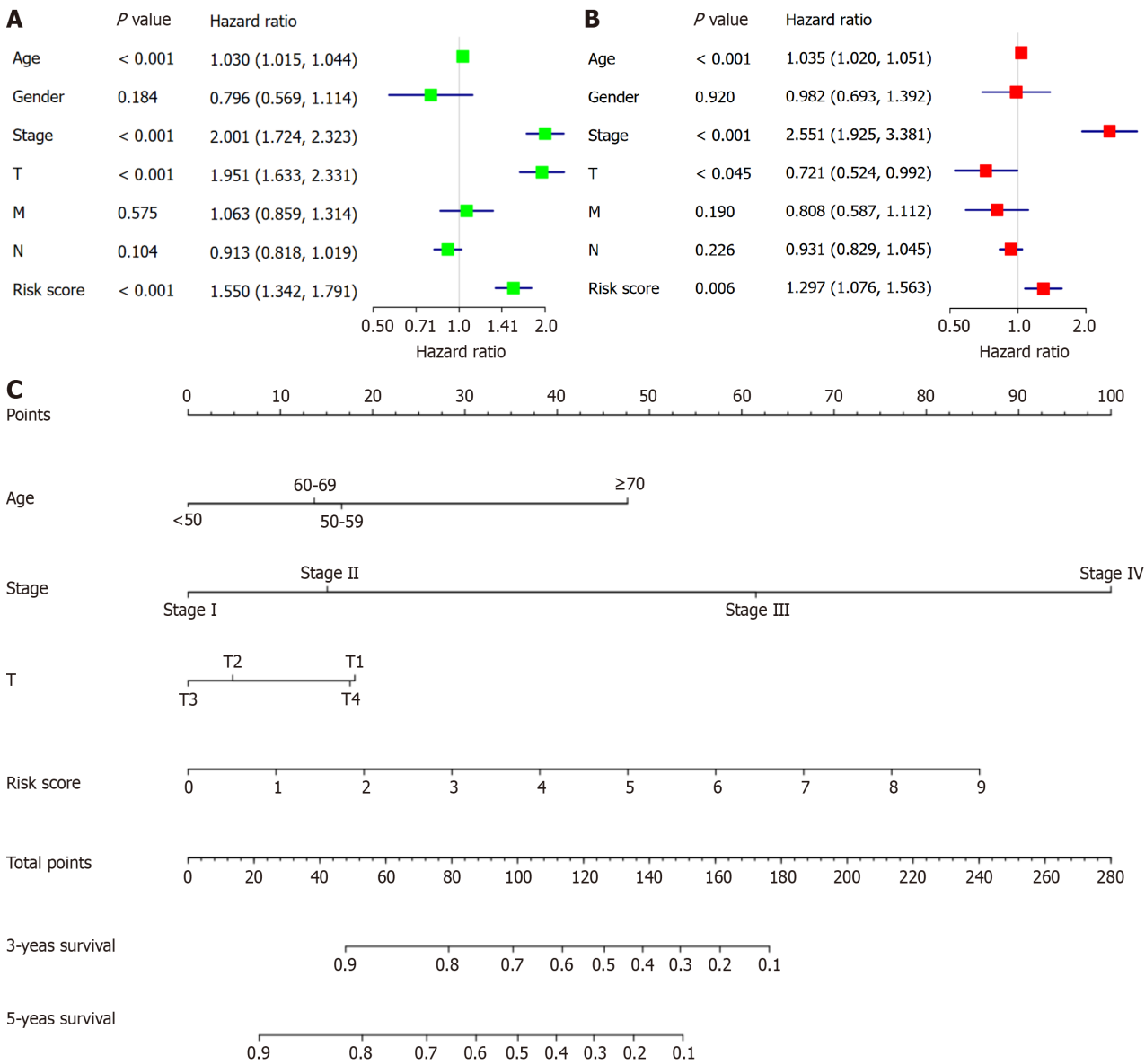


Figure 4 Cox proportional hazard model of correlative factors in renal cell carcinoma patients. A: Univariate Cox regression analysis of seven clinicopathological parameters affecting overall survival; B: Multivariate Cox regression analysis of seven clinicopathological parameters affecting overall survival; C: An established nomogram to predict survival based on the Cox model.

by researchers on the basis of systematic assessment of the immune status of cancer patients is not only an independent prognostic factor for the recurrence-free survival of cancer patients but also has better prognostic value than TNM staging. This conclusion was also verified in our research, and the established immune risk assessment model has greater risk stratification ability, accuracy of prognostic judgment, and value in guiding clinical decision-making than the current traditional single prognostic model for RCC. The model can be used to assess the prognosis of patients with RCC and the therapeutic benefits of related drugs, which can help clinicians develop personalized treatment plans and improve the survival rate of patients with RCC.

There were specific constraints in our investigation. Initially, it is crucial to note that the public dataset contains a restricted amount of data. Consequently, the clinical pathology characteristics that were specifically chosen for examination in this study are not exhaustive and may result in possible errors or biases. In subsequent studies, the sample size should be further expanded to reduce bias and confirm the results. Furthermore, we did not consider the variability of the immunological microenvironment in relation to the specific site of immune infiltration. Lastly, the outcomes of the study may not be applicable to patients in Asian countries because all of the data sets that were downloaded for developing an immunological risk scoring model were from Western countries. More investigation is needed to verify this.

CONCLUSION

In this study, we explored all immune cells that are closely associated with RCC. We identified and validated the types

and distributions of key TIIC subpopulations closely associated with patients with RCC. Additionally, our research incorporated the major factors that influence the prognosis of patients and constructed a prognostic prediction-related model. The predictive model for immune risk assessment on the basis of key subgroups has good predictive value for patients in the RCC cohort. Considering the rapid growth of high-throughput technology, we are optimistic that our immunological risk score model provides significant promise for application in clinical practice. These results would potentially be extremely valuable for investigating novel immunodiagnosis and therapeutic approaches for cancer.

FOOTNOTES

Author contributions: Wei GH wrote the article; Wei GH, Fan LY and Wei XY designed the experiments; Wei GH, Wei XY, Sun M and Zhou WZ analyzed data and contributed to the resources; Zhu CD supervised the study; All authors have read and approved the final manuscript.

Supported by The Medical Scientific Research Project of the Jiangsu Health Commission, China, No. M2020055; The Nanjing Medical Science and Technology Development Project, China, No. YKK22130; and The Postgraduate Research and Practice Innovation Program of Jiangsu Province, China, No. KYCX23_2105.

Conflict-of-interest statement: The authors declare no conflicts of interest.

Open-Access: This article is an open-access article that was selected by an in-house editor and fully peer-reviewed by external reviewers. It is distributed in accordance with the Creative Commons Attribution NonCommercial (CC BY-NC 4.0) license, which permits others to distribute, remix, adapt, build upon this work non-commercially, and license their derivative works on different terms, provided the original work is properly cited and the use is non-commercial. See: <https://creativecommons.org/licenses/by-nc/4.0/>

Country of origin: China

ORCID number: Guo-Hao Wei 0000-0002-1677-8250; Chuan-Dong Zhu 0000-0002-9986-6319.

S-Editor: Luo ML

L-Editor: Filipodia

P-Editor: Wang WB

REFERENCES

- 1 Siegel RL, Wagle NS, Cercek A, Smith RA, Jemal A. Colorectal cancer statistics, 2023. *CA Cancer J Clin* 2023; **73**: 233-254 [PMID: 36856579 DOI: 10.3322/caac.21772]
- 2 Brown JE, Symeonides SN. Treatment Strategies in Metastatic Renal Cancer: Dose Titration in Clear Cell Renal Cell Carcinoma. *Eur Urol* 2022; **82**: 293-294 [PMID: 35577645 DOI: 10.1016/j.eururo.2022.04.018]
- 3 Lv J, Liu Y, Mo S, Zhou Y, Chen F, Cheng F, Li C, Saimi D, Liu M, Zhang H, Tang K, Ma J, Wang Z, Zhu Q, Tong WM, Huang B. Gasdermin E mediates resistance of pancreatic adenocarcinoma to enzymatic digestion through a YBX1-mucin pathway. *Nat Cell Biol* 2022; **24**: 364-372 [PMID: 35292781 DOI: 10.1038/s41556-022-00857-4]
- 4 Chen YW, Wang L, Panian J, Dhanji S, Derweesh I, Rose B, Bagrodia A, McKay RR. Treatment Landscape of Renal Cell Carcinoma. *Curr Treat Options Oncol* 2023; **24**: 1889-1916 [PMID: 38153686 DOI: 10.1007/s11864-023-01161-5]
- 5 Yang JC. The ongoing mystery of renal cell cancer. *Cell Rep Med* 2021; **2**: 100445 [PMID: 34841292 DOI: 10.1016/j.xcrm.2021.100445]
- 6 Martin TD, Patel RS, Cook DR, Choi MY, Patil A, Liang AC, Li MZ, Haigis KM, Elledge SJ. The adaptive immune system is a major driver of selection for tumor suppressor gene inactivation. *Science* 2021; **373**: 1327-1335 [PMID: 34529489 DOI: 10.1126/science.abg5784]
- 7 Del Poggetto E, Ho IL, Balestrieri C, Yen EY, Zhang S, Citron F, Shah R, Corti D, Diaferia GR, Li CY, Loponte S, Carbone F, Hayakawa Y, Valenti G, Jiang S, Sapio L, Jiang H, Dey P, Gao S, Deem AK, Rose-John S, Yao W, Ying H, Rhim AD, Genovese G, Heffernan TP, Maitra A, Wang TC, Wang L, Draetta GF, Carugo A, Natoli G, Viale A. Epithelial memory of inflammation limits tissue damage while promoting pancreatic tumorigenesis. *Science* 2021; **373**: eabj0486 [PMID: 34529467 DOI: 10.1126/science.abj0486]
- 8 Iglesias-Escudero M, Arias-González N, Martínez-Cáceres E. Regulatory cells and the effect of cancer immunotherapy. *Mol Cancer* 2023; **22**: 26 [PMID: 36739406 DOI: 10.1186/s12943-023-01714-0]
- 9 Bukavina L, Bensalah K, Bray F, Carlo M, Challacombe B, Karam JA, Kassouf W, Mitchell T, Montironi R, O'Brien T, Panebianco V, Scelo G, Shuch B, van Poppel H, Blosser CD, Psutka SP. Epidemiology of Renal Cell Carcinoma: 2022 Update. *Eur Urol* 2022; **82**: 529-542 [PMID: 36100483 DOI: 10.1016/j.eururo.2022.08.019]
- 10 Navani V, Heng DYC. Immunotherapy in renal cell carcinoma. *Lancet Oncol* 2023; **24**: 1164-1166 [PMID: 37844599 DOI: 10.1016/S1470-2045(23)00473-4]
- 11 Dai S, Zeng H, Liu Z, Jin K, Jiang W, Wang Z, Lin Z, Xiong Y, Wang J, Chang Y, Bai Q, Xia Y, Liu L, Zhu Y, Xu L, Qu Y, Guo J, Xu J. Intratumoral CXCL13(+)CD8(+)T cell infiltration determines poor clinical outcomes and immuno-evasive contexture in patients with clear cell renal cell carcinoma. *J Immunother Cancer* 2021; **9**: e001823 [PMID: 33589528 DOI: 10.1136/jitc-2020-001823]
- 12 Eskelinen T, Veitonmäki T, Kotsar A, Tammela TLJ, Pöyhönen A, Murtola TJ. Improved renal cancer prognosis among users of drugs targeting renin-angiotensin system. *Cancer Causes Control* 2022; **33**: 313-320 [PMID: 34921656 DOI: 10.1007/s10552-021-01527-w]
- 13 Xu C, Zeng H, Fan J, Huang W, Yu X, Li S, Wang F, Long X. A novel nine-microRNA-based model to improve prognosis prediction of renal cell carcinoma. *BMC Cancer* 2022; **22**: 264 [PMID: 35279104 DOI: 10.1186/s12885-022-09322-9]

- 14 **Wang Z**, Xu C, Liu W, Zhang M, Zou J, Shao M, Feng X, Yang Q, Li W, Shi X, Zang G, Yin C. A clinical prediction model for predicting the risk of liver metastasis from renal cell carcinoma based on machine learning. *Front Endocrinol (Lausanne)* 2022; **13**: 1083569 [PMID: 36686417 DOI: 10.3389/fendo.2022.1083569]
- 15 **Yang Y**, Cao Y, Han X, Ma X, Li R, Wang R, Xiao L, Xie L. Revealing EXPH5 as a potential diagnostic gene biomarker of the late stage of COPD based on machine learning analysis. *Comput Biol Med* 2023; **154**: 106621 [PMID: 36746116 DOI: 10.1016/j.combiomed.2023.106621]
- 16 **Li J**, Zhang Y, Lu T, Liang R, Wu Z, Liu M, Qin L, Chen H, Yan X, Deng S, Zheng J, Liu Q. Identification of diagnostic genes for both Alzheimer's disease and Metabolic syndrome by the machine learning algorithm. *Front Immunol* 2022; **13**: 1037318 [PMID: 36405716 DOI: 10.3389/fimmu.2022.1037318]
- 17 **Jiang H**, Zhang X, Wu Y, Zhang B, Wei J, Li J, Huang Y, Chen L, He X. Bioinformatics identification and validation of biomarkers and infiltrating immune cells in endometriosis. *Front Immunol* 2022; **13**: 944683 [PMID: 36524127 DOI: 10.3389/fimmu.2022.944683]
- 18 **Zhang Y**, Xia R, Lv M, Li Z, Jin L, Chen X, Han Y, Shi C, Jiang Y, Jin S. Machine-Learning Algorithm-Based Prediction of Diagnostic Gene Biomarkers Related to Immune Infiltration in Patients With Chronic Obstructive Pulmonary Disease. *Front Immunol* 2022; **13**: 740513 [PMID: 35350787 DOI: 10.3389/fimmu.2022.740513]
- 19 **Bejarano L**, Jordão MJC, Joyce JA. Therapeutic Targeting of the Tumor Microenvironment. *Cancer Discov* 2021; **11**: 933-959 [PMID: 33811125 DOI: 10.1158/2159-8290.CD-20-1808]
- 20 **Peng C**, Xu Y, Wu J, Wu D, Zhou L, Xia X. TME-Related Biomimetic Strategies Against Cancer. *Int J Nanomedicine* 2024; **19**: 109-135 [PMID: 38192633 DOI: 10.2147/IJN.S441135]
- 21 **Tay C**, Tanaka A, Sakaguchi S. Tumor-infiltrating regulatory T cells as targets of cancer immunotherapy. *Cancer Cell* 2023; **41**: 450-465 [PMID: 36917950 DOI: 10.1016/j.ccell.2023.02.014]
- 22 **Dai Q**, Wu W, Amei A, Yan X, Lu L, Wang Z. Regulation and characterization of tumor-infiltrating immune cells in breast cancer. *Int Immunopharmacol* 2021; **90**: 107167 [PMID: 33223469 DOI: 10.1016/j.intimp.2020.107167]
- 23 **Díaz-Montero CM**, Rini BI, Finke JH. The immunology of renal cell carcinoma. *Nat Rev Nephrol* 2020; **16**: 721-735 [PMID: 32733094 DOI: 10.1038/s41581-020-0316-3]
- 24 **Minárik I**, Lašćovička J, Budinský V, Kayserová J, Spíšek R, Jarolím L, Fialová A, Babjuk M, Bartůňková J. Regulatory T cells, dendritic cells and neutrophils in patients with renal cell carcinoma. *Immunol Lett* 2013; **152**: 144-150 [PMID: 23721909 DOI: 10.1016/j.imlet.2013.05.010]
- 25 **Meylan M**, Petitprez F, Becht E, Bougouin A, Pupier G, Calvez A, Giglioli I, Verkarre V, Lacroix G, Verneau J, Sun CM, Laurent-Puig P, Vano YA, Elaïdi R, Méjean A, Sanchez-Salas R, Barret E, Cathelineau X, Oudard S, Reynaud CA, de Reyniès A, Sautès-Fridman C, Fridman WH. Tertiary lymphoid structures generate and propagate anti-tumor antibody-producing plasma cells in renal cell cancer. *Immunity* 2022; **55**: 527-541 [PMID: 35231421 DOI: 10.1016/j.immuni.2022.02.001]
- 26 **Zhang X**, Sun Y, Ma Y, Gao C, Zhang Y, Yang X, Zhao X, Wang W, Wang L. Tumor-associated M2 macrophages in the immune microenvironment influence the progression of renal clear cell carcinoma by regulating M2 macrophage-associated genes. *Front Oncol* 2023; **13**: 1157861 [PMID: 37361571 DOI: 10.3389/fonc.2023.1157861]
- 27 **Geissler K**, Fornara P, Lautenschläger C, Holzhausen HJ, Seliger B, Riemann D. Immune signature of tumor infiltrating immune cells in renal cancer. *Oncoimmunology* 2015; **4**: e985082 [PMID: 25949868 DOI: 10.4161/2162402X.2014.985082]
- 28 **Wang Y**, Wang Y, Xu L, Lu X, Fu D, Su J, Geng H, Qin G, Chen R, Quan C, Niu Y, Yue D. CD4 + T cells promote renal cell carcinoma proliferation via modulating YBX1. *Exp Cell Res* 2018; **363**: 95-101 [PMID: 29289594 DOI: 10.1016/j.yexcr.2017.12.026]
- 29 **Thompson RH**, Dong H, Lohse CM, Leibovich BC, Blute ML, Cheville JC, Kwon ED. PD-1 is expressed by tumor-infiltrating immune cells and is associated with poor outcome for patients with renal cell carcinoma. *Clin Cancer Res* 2007; **13**: 1757-1761 [PMID: 17363529 DOI: 10.1158/1078-0432.CCR-06-2599]
- 30 **Menard LC**, Fischer P, Kakrecha B, Linsley PS, Wambre E, Liu MC, Rust BJ, Lee D, Penhallow B, Manjarrez Orduno N, Nadler SG. Renal Cell Carcinoma (RCC) Tumors Display Large Expansion of Double Positive (DP) CD4+CD8+ T Cells With Expression of Exhaustion Markers. *Front Immunol* 2018; **9**: 2728 [PMID: 30534127 DOI: 10.3389/fimmu.2018.02728]
- 31 **Gutiérrez-Melo N**, Baumjohann D. T follicular helper cells in cancer. *Trends Cancer* 2023; **9**: 309-325 [PMID: 36642575 DOI: 10.1016/j.trecan.2022.12.007]
- 32 **Li C**, Xu X, Wei S, Jiang P, Xue L, Wang J; Senior Correspondence. Tumor-associated macrophages: potential therapeutic strategies and future prospects in cancer. *J Immunother Cancer* 2021; **9**: e001341 [PMID: 33504575 DOI: 10.1136/jitc-2020-001341]
- 33 **Li M**, Yang Y, Xiong L, Jiang P, Wang J, Li C. Metabolism, metabolites, and macrophages in cancer. *J Hematol Oncol* 2023; **16**: 80 [PMID: 37491279 DOI: 10.1186/s13045-023-01478-6]
- 34 **Yang Z**, Xie H, He D, Li L. Infiltrating macrophages increase RCC epithelial mesenchymal transition (EMT) and stem cell-like populations via AKT and mTOR signaling. *Oncotarget* 2016; **7**: 44478-44491 [PMID: 27283897 DOI: 10.18632/oncotarget.9873]
- 35 **Delahunt B**, Eble JN, Samarasinghe H, Thunders M, Yaxley JW, Egevad L. Staging of renal cell carcinoma: current progress and potential advances. *Pathology* 2021; **53**: 120-128 [PMID: 33121821 DOI: 10.1016/j.pathol.2020.08.007]
- 36 **Rathmell WK**, Rumble RB, Van Veldhuizen PJ, Al-Ahmadie H, Enamekhoo H, Hauke RJ, Louie AV, Milowsky MI, Molina AM, Rose TL, Siva S, Zaorsky NG, Zhang T, Qamar R, Kungel TM, Lewis B, Singer EA. Management of Metastatic Clear Cell Renal Cell Carcinoma: ASCO Guideline. *J Clin Oncol* 2022; **40**: 2957-2995 [PMID: 35728020 DOI: 10.1200/JCO.22.00868]



Published by **Baishideng Publishing Group Inc**
7041 Koll Center Parkway, Suite 160, Pleasanton, CA 94566, USA

Telephone: +1-925-3991568

E-mail: office@baishideng.com

Help Desk: <https://www.f6publishing.com/helpdesk>

<https://www.wjgnet.com>

