

Supplementary Table 1 Primers used for qPCR

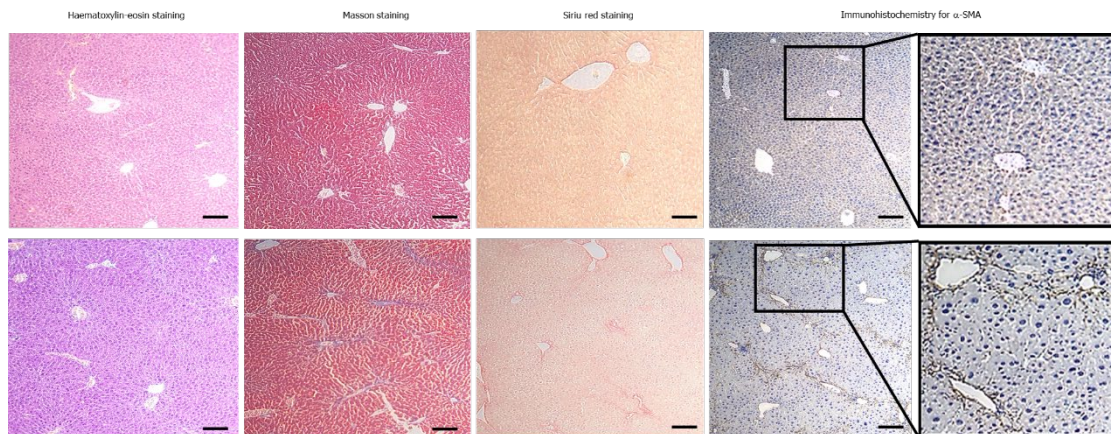
Gene names	Sense primers (5'-3')	Antisense primers (5'-3')
Homo- β -actin	CAGCCTTCCTTCCTGGGCATG	ATTGTGCTGGGTGCCAGGGCAG
Homo-NS3TP1	GATGTCCTGAGTGTAGCAGTCA	TGCTTTCCTATCACACGTTTTCA
Homo-COL1A1	TTTGGATGGTGCCAAGGGAG	CACCATCATTTCACGAGCA
Homo-COL1A2	AAAGAACCCAGCTCGCACAT	ACCAGTTCTTGGCTGGGATG
Homo-COL3A1	TCGCCCTCCTAATGGTCAAG	TTCTGAGGACCAGTAGGGCA
Homo-COL4A2	TTATGCACTGCCTAAAGAGGAGC	CCCTTAACTCCGTAGAAACCAAG
Homo- α -SMA	GGGAATGGGACAAAAAGACA	CTTCAGGGGCAACACGAA
Mus- β -actin	GGCTGTATTCCCCTCCATCG	CCAGTTGGTAACAATGCCATGT
Mus-COL1A1	CTGGCGGTTTCAGGTCCAAT	TTCCAGGCAATCCACGAGC
Mus-COL3A1	CCTGGCTCAAATGGCTCAC	GACCTCGTGTTCCGGGTAT
Mus- α -SMA	GGCACCCTGAACCCTAAGG	ACAATACCAGTTGTACGTCCAGA
Mus-NS3TP1	TTGCTGCATAATCTTAGACGGC	ACAGGTTGGATAGTCAAACACC

NS3TP1: HCV nonstructural protein 3-transactivated protein 1; COL1A1: type 1 collagen alpha 1 chain; COL1A2: type 1 collagen alpha 2 chain; COL3A1: type 3 collagen alpha 1 chain; COL4A2: type 4 collagen alpha 2 chain; α -SMA: Alpha smooth muscle actin.

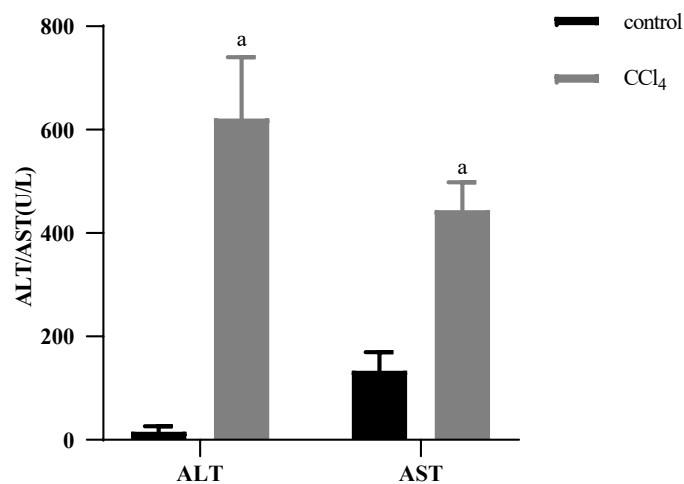
Supplementary Table 2 Primary Antibodies used for Western blot

Antibody name	Company name	Lot number
anti-homo-NS3TP1	Invitrogen	PA5-57534
anti-mus-NS3TP1	Santa cruz	sc-374190
anti- α -SMA	Abcam	Ab124964
anti-collagen I	Abcam	Ab138492
anti-collagen III	Abcam	ab7778
anti-smad3	CST	C67H9
anti-p-smad3	CST	25A9
anti-NF- κ B	CST	D14E12
anti-p-NF- κ B	CST	93H1
anti-TGF β 1R	Abcam	ab31013

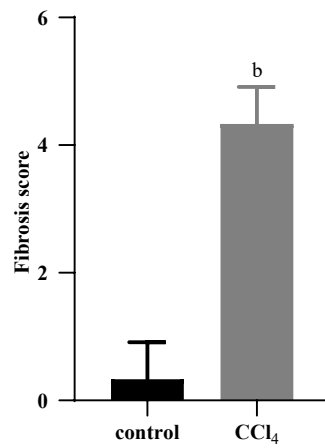
NS3TP1: HCV nonstructural protein 3-transactivated protein 1; α -SMA: Alpha smooth muscle actin; TGF β 1R: Transforming growth factor beta 1 receptor; Smad3: Sekelsky mothers against decapentaplegic homolog 3; p-smad3: Phosphorylated sekelsky mothers against decapentaplegic homolog; NF- κ B: Nuclear factor-kappa B; p-NF- κ B: Phosphorylated nuclear factor-kappa B.



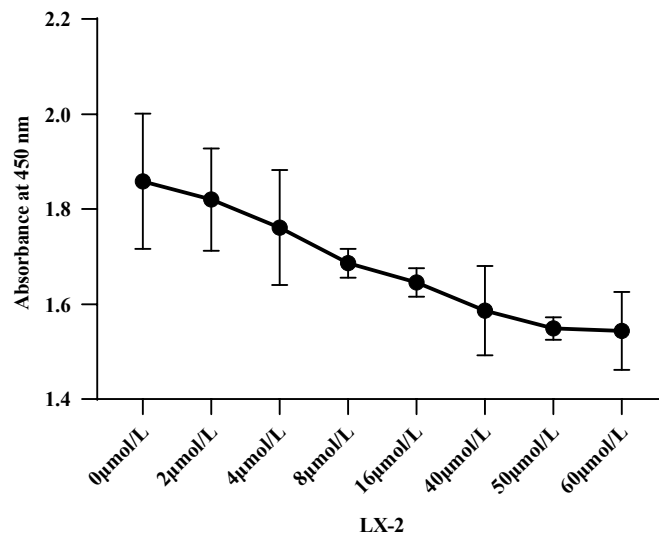
Supplementary Figure 1 Hematoxylin-eosin staining, Masson staining, Sirius red staining, and immunohistochemical staining for α -SMA, scale bar = 100 μ m.



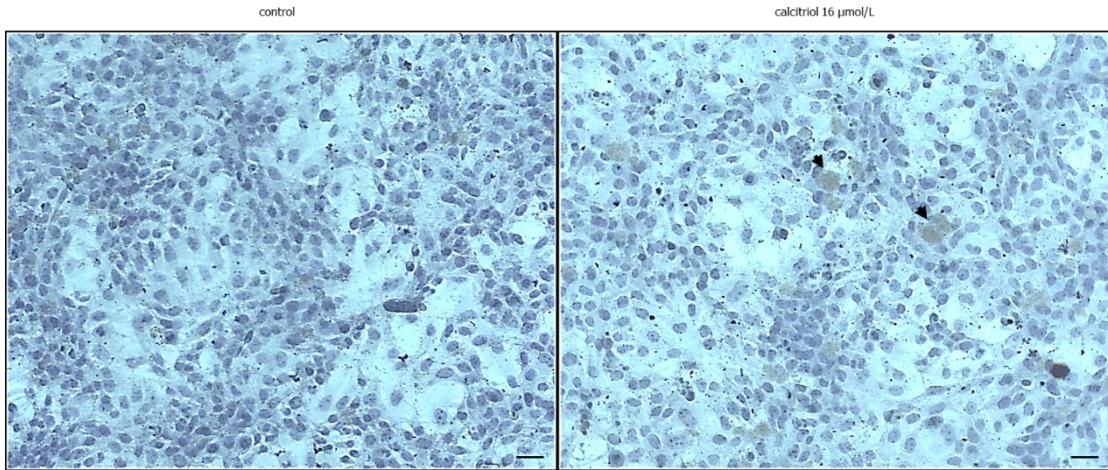
Supplementary Figure 2 Plasma ALT and AST levels in CCl₄-induced mice livers (n=4), ^a*P* < 0.0001 CCl₄ group vs corn oil control group, CCl₄: Carbon tetrachloride; ALT : Alanine aminotransferase; AST : Aspartate aminotransferase.



Supplementary Figure 3 Evaluation of fibrosis score according to the Ishak scoring system (n=6), ^b*P* <0.01 CCl₄ group vs corn oil control group, CCl₄: Carbon tetrachloride.



Supplementary Figure 4 Affection of calcitriol at different doses on LX-2 cell proliferation evaluated by a CCK-8 kit (n=6), CCK-8: Cell counting kit-8.



Supplementary Figure 5 Oil Red O staining of fat droplets in LX-2 cells after calcitriol treatment shown by black arrows, scale bar=100 μ m.