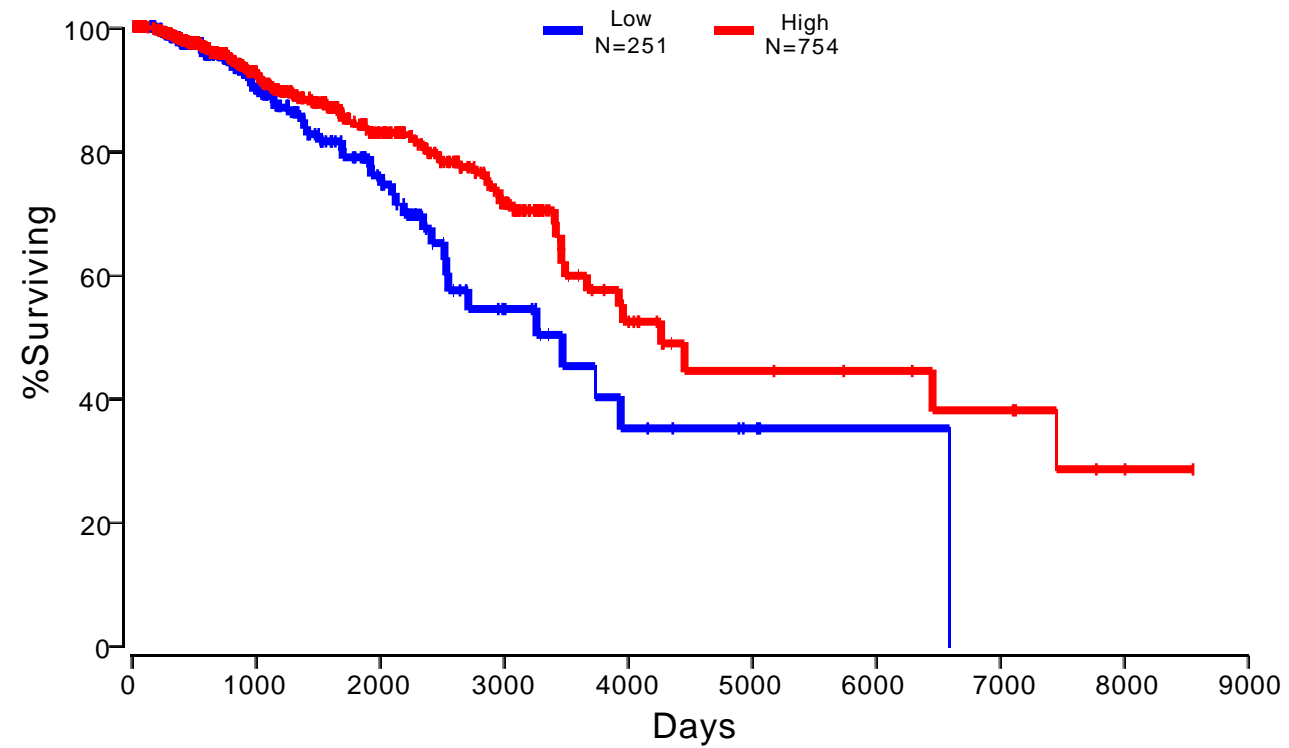
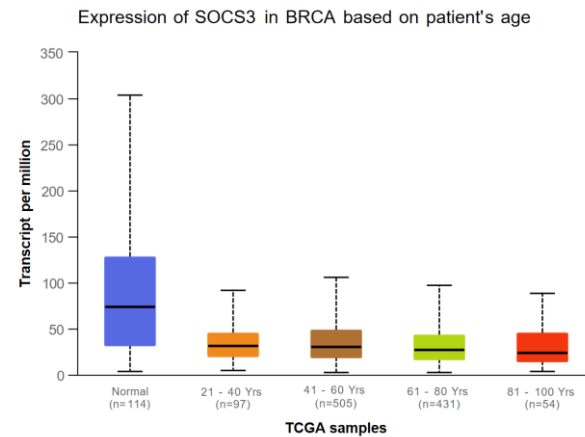
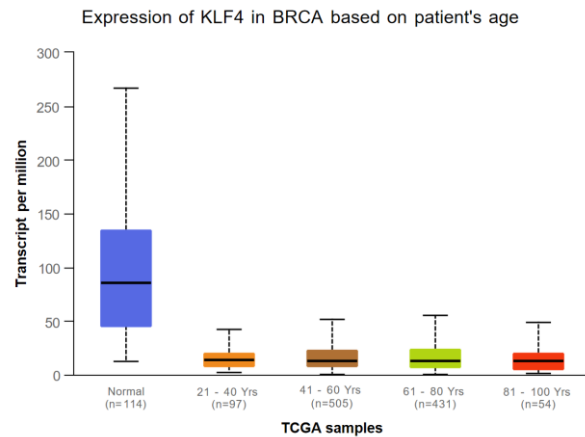
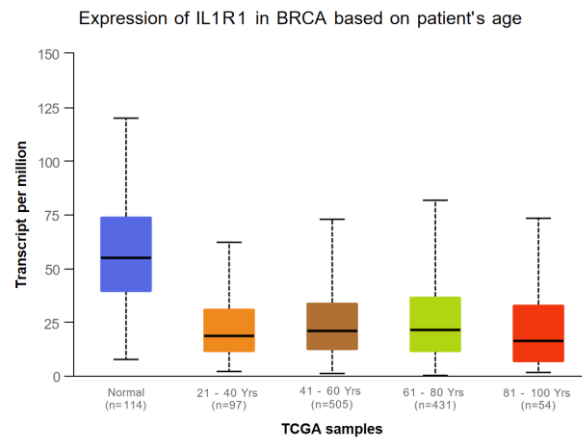
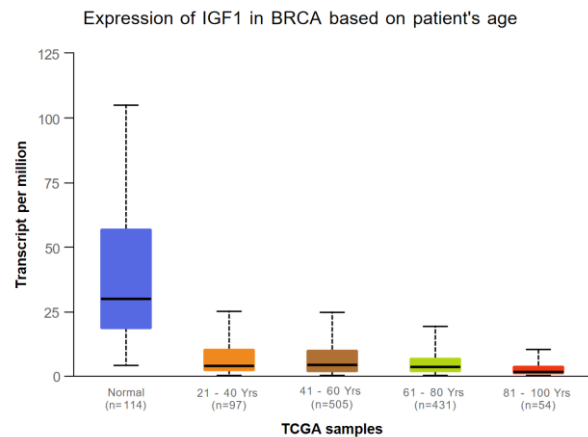
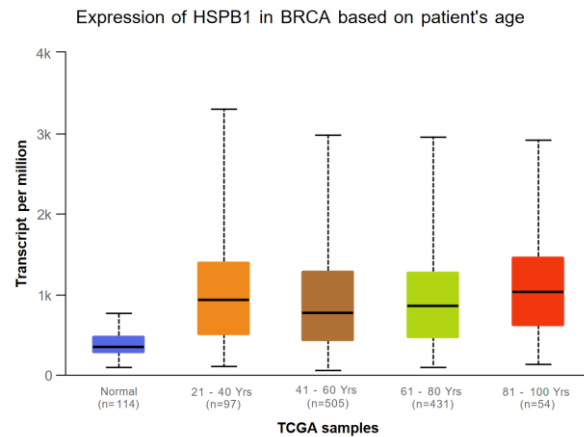
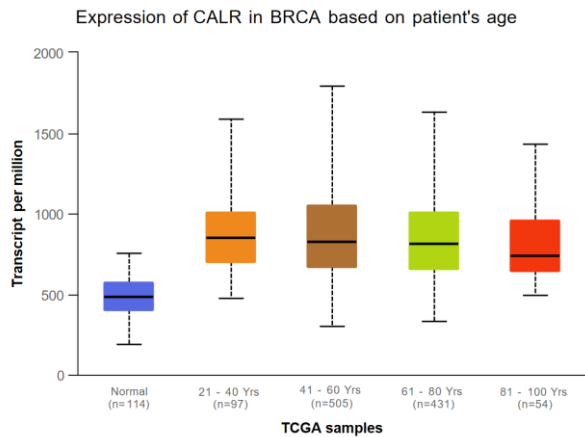
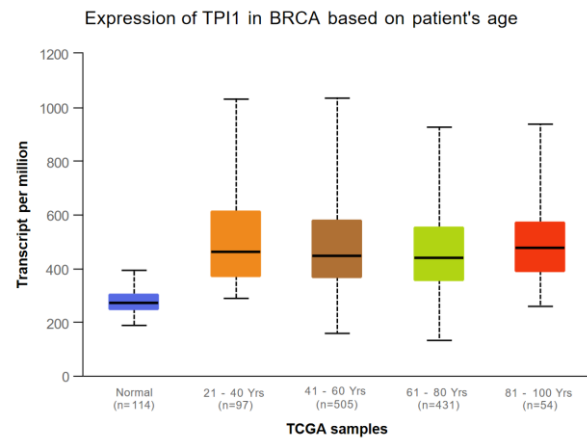


Supplementary Figure 1 Major metabolic pathways in breast cancer.



Supplementary Figure 2 Overall survival analysis of CDH4.

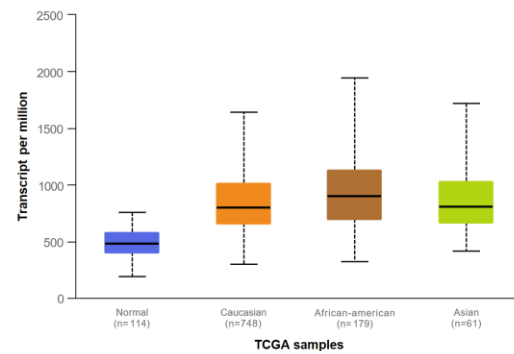




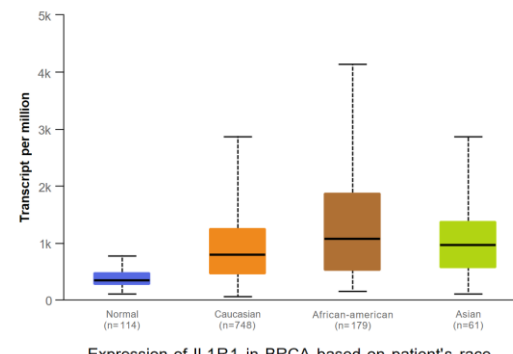
Supplementary Figure 3 Analysis of the expression of the CALR, HSPB1, IGF1, IL1R1, KLF4, SOCS3, and TPI1 genes in breast cancer with age.

***** $P < 0.01$.**

Expression of CALR in BRCA based on patient's race

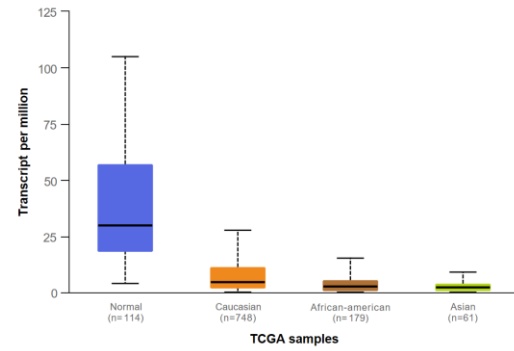


Expression of HSPB1 in BRCA based on patient's race



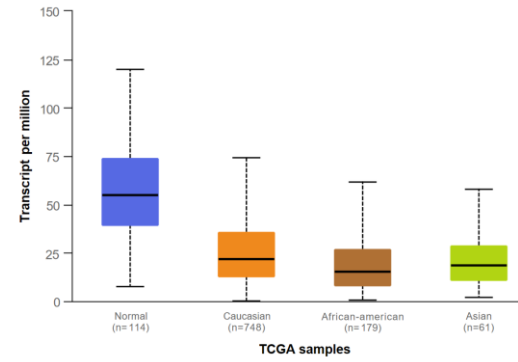
TCGA samples

Expression of IGF1 in BRCA based on patient's race



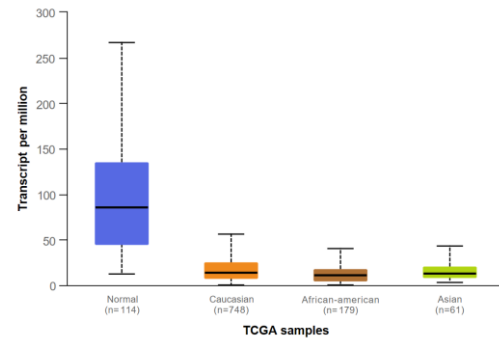
TCGA samples

Expression of IL1R1 in BRCA based on patient's race



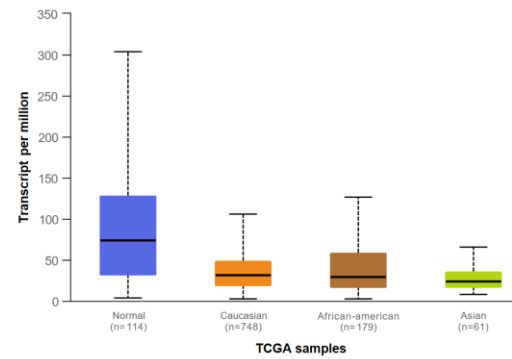
TCGA samples

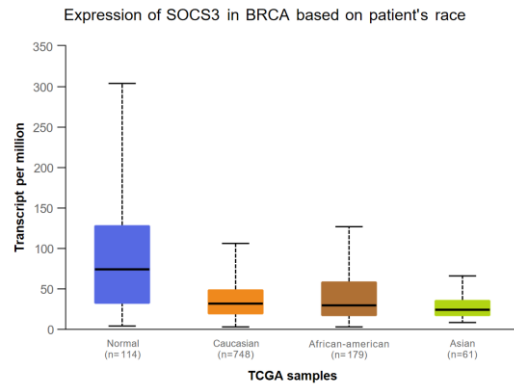
Expression of KLF4 in BRCA based on patient's race



TCGA samples

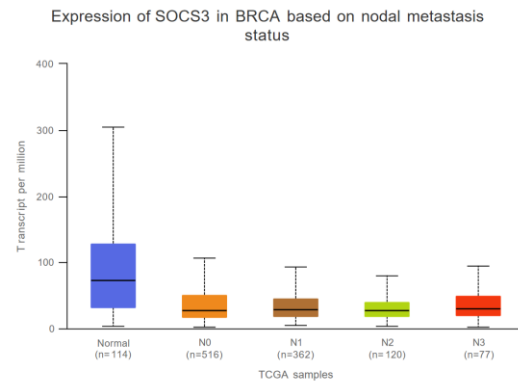
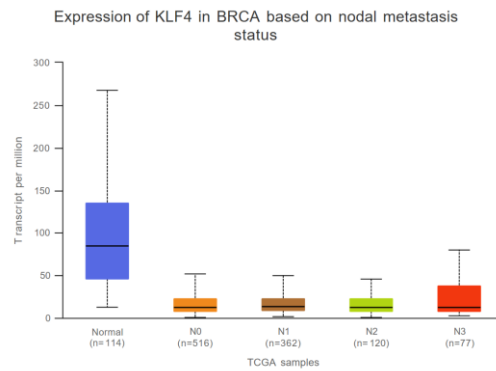
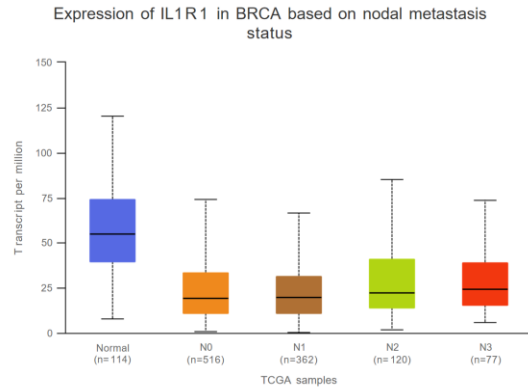
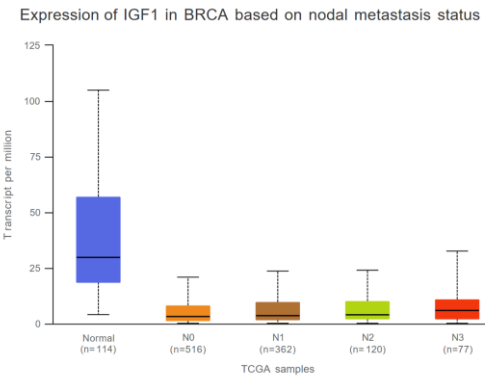
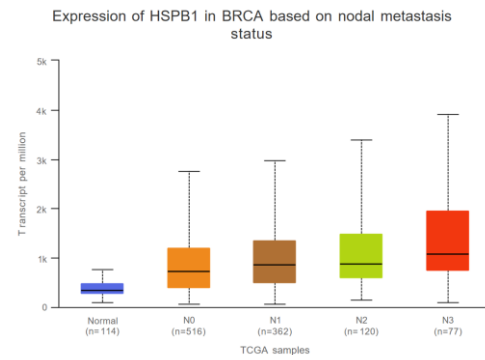
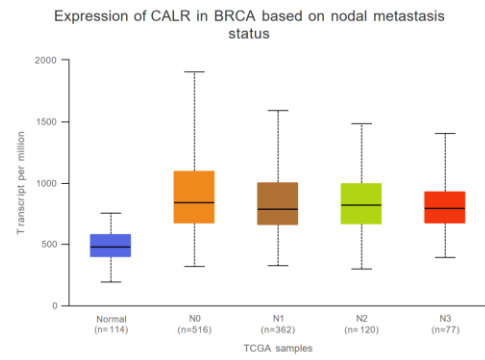
Expression of SOCS3 in BRCA based on patient's race

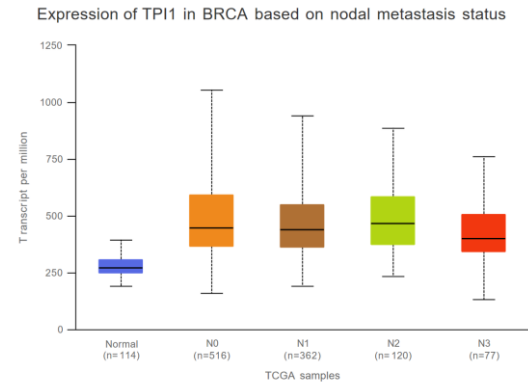




Supplementary Figure 4 Analysis of the expression of the CALR, HSPB1, IGF1, IL1R1, KLF4, SOCS3, and TPI1 genes in breast cancer with race.

***** $P < 0.01$.**





Supplementary Figure 5 Analysis of the expression of the CALR, HSPB1, IGF1, IL1R1, KLF4, SOCS3, and TPI1 genes in breast cancer with the stage of lymph node metastasis. * $P < 0.01$.**