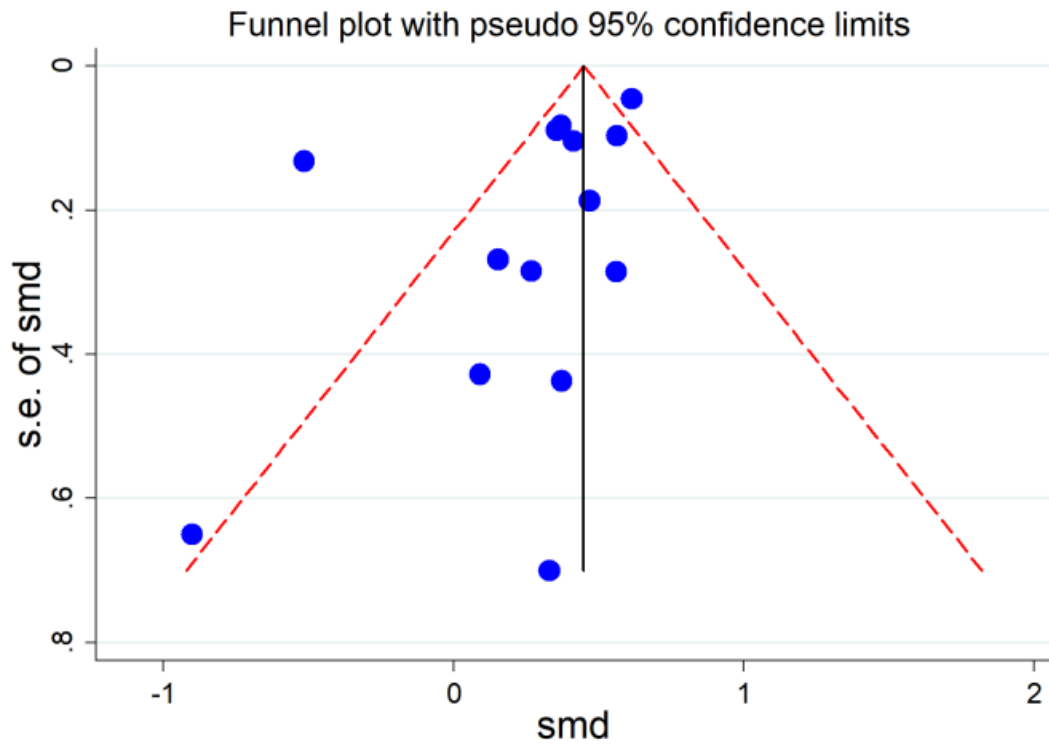
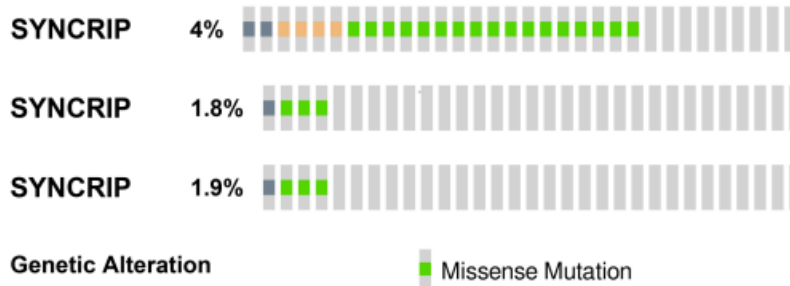


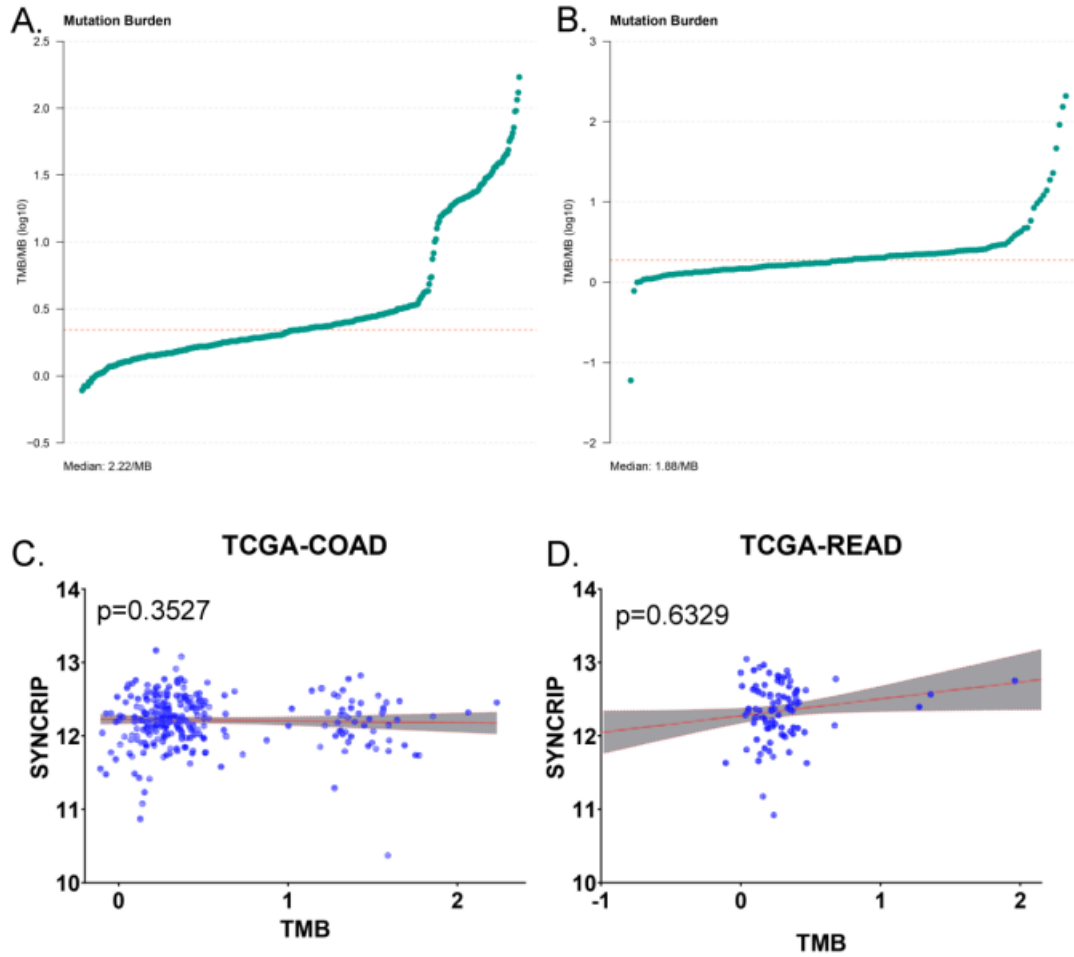
Supplementary Figure 1 The flow chart of the high-throughput data in our study.



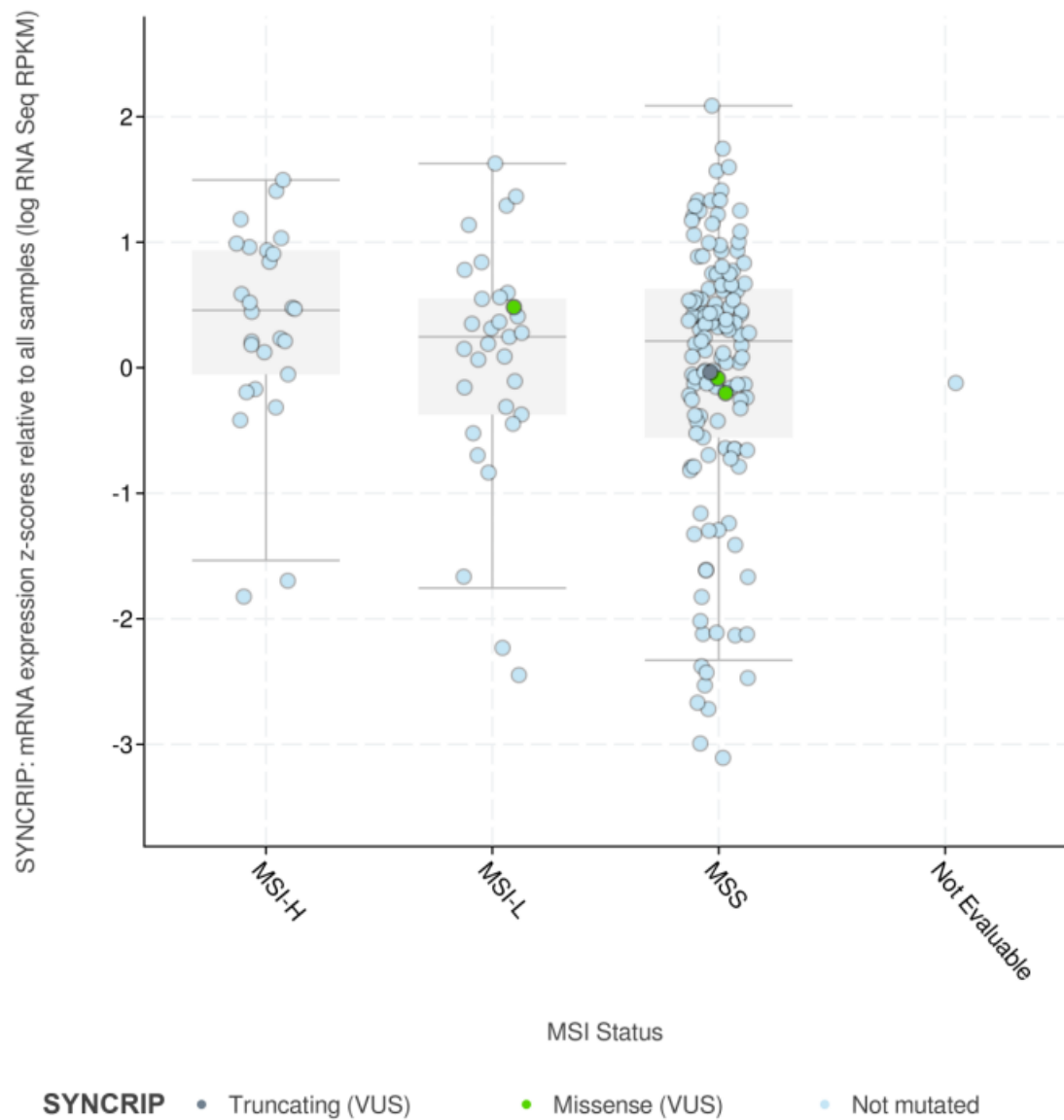
Supplementary Figure 2 The funnel plot of the SMD model showing no public bias.



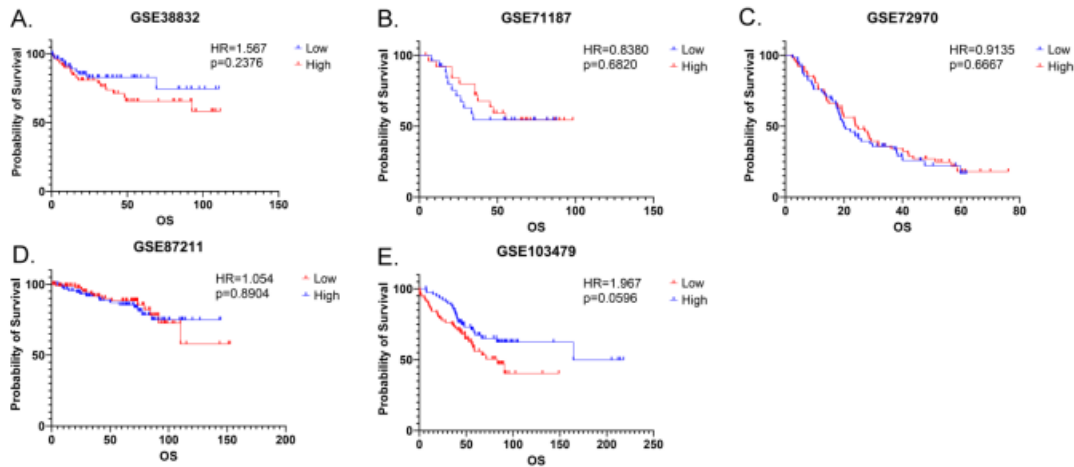
Supplementary Figure 3 the mutation status of SYNCRIP in CRC based on three cohorts.



Supplementary Figure 4 There was no correlation between SYNCRIP and the TMB of CRC. (A, C): The relation between SYNCRIP and COAD. (B, D): The relation between SYNCRIP and READ.



Supplementary Figure 5 The expression of SYNCRIP showed no difference in various MSI status groups.



Supplementary Figure 6 The prognosis value of SYNCRIP in CRC. No correlation was found between SYNCRIP and the survival time of patients with CRC.

studies	exp counts	exp mean	exp sd	ctrl counts	ctrl mean	ctrl sd	platform
GPL10558	89	9.79	0.3980	129	9.29	0.2783	Illumina HumanHT-12 V4.0 expression beadchip
GPL15207	37	9.95	0.4929	23	9.41	0.3912	Affymetrix Human Gene Expression Array
GPL23126	16	11.03	0.9637	16	10.09	0.7043	Affymetrix Human Clariom D Assay
GPL570	645	10.50	0.6708	239	10.09	0.7347	Affymetrix Human Genome U133 Plus 2.0 Array
GPL6480	206	11.89	0.8167	14	10.60	0.6288	Agilent-014850 Whole Human Genome Microarray 4x44K G4112F
GPL96	268	9.02	0.5376	104	8.28	0.4653	Affymetrix Human Genome U133A Array
GSE103512	57	8.26	0.4072	12	7.74	0.3478	Affymetrix HT HG-U133+ PM Array Plate
GSE113513	14	9.43	0.3354	14	8.75	0.4082	Affymetrix Human Gene Expression Array
GSE115261	10	13.70	0.6973	10	12.70	0.6229	Affymetrix Human Clariom D Assay
GSE126092	10	7.53	0.5523	10	7.90	0.4754	Agilent-074348 Human LncRNA v6 4X180K
GSE141174	3	8.66	0.4950	3	8.13	0.3794	Illumina humanRef-8 v2.0 expression beadchip
GSE156355	6	11.94	0.6121	6	11.32	0.3133	Agilent-072363 SurePrint G3 Human GE v3 8x60K Microarray 039494
GSE15781	22	16.13	0.7923	20	15.90	0.6605	ABI Human Genome Survey Microarray Version 2
GSE20842	65	13.94	0.5265	65	13.76	0.3265	Agilent-014850 Whole Human Genome Microarray 4x44K G4112F
GSE25071	46	15.58	0.6416	4	15.18	0.7310	ABI Human Genome Survey Microarray Version 2
GSE28000	5	1.16	0.3025	6	0.96	0.1647	Agilent-012391 Whole Human Genome Oligo Microarray G4112A
GSE41011	19	5.70	1.5542	12	5.11	0.9495	Phalanx Human OneArray
GSE44076	98	10.17	0.4232	98	9.46	0.3804	Affymetrix Human Genome U219 Array
GSE47063	14	10.15	0.5245	4	9.38	0.5645	Illumina human-6 v2.0 expression beadchip
GSE62321	20	4.85	0.8007	18	4.97	0.4584	Affymetrix Human Genome U133B Array
GSE87211	203	12.45	0.3495	160	11.97	0.2990	Agilent-026652 Whole Human Genome Microarray 4x44K v2

TCGA+GTEx	471	5.04	0.5879	349	3.99	0.5457	IlluminaHiSeq
-----------	-----	------	--------	-----	------	--------	---------------

Supplementary Table 1 The information of the incorporated datasets.