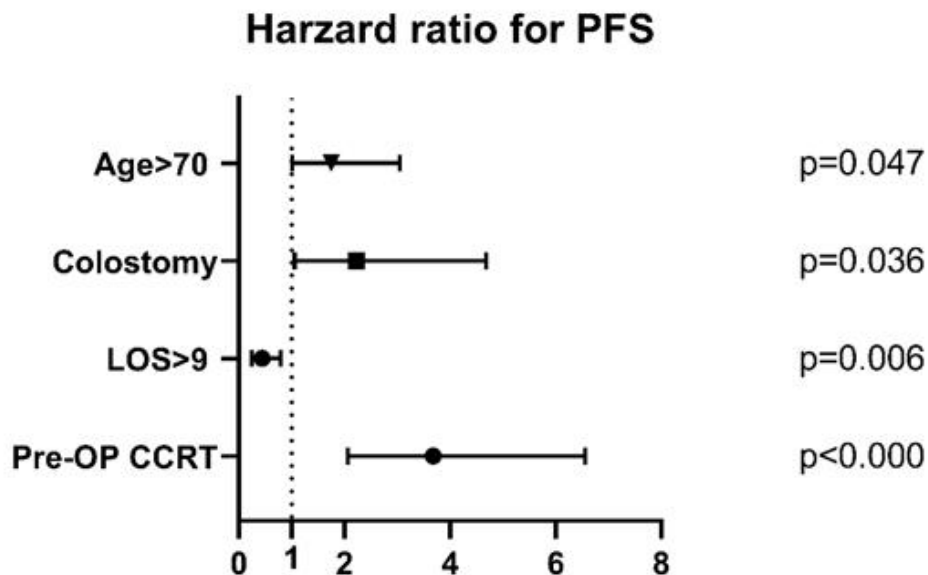


Supplementary Figure 1 Multivariate Cox proportional hazards model of variables significantly associated with RFS ( $P < 0.05$ ) with a primary endpoint of ER (RFS < 8 months), including (A) age > 70 year-old, (B) preoperative CCRT, (C) length of stay > 9, and (D) colostomy.



Supplementary Figure 2 Forest plot of hazard ratio based on multivariate Cox proportional hazards model.