

Supplementary Table 1 Search Strategy in PubMed

Search number	Query	Results
8	<p>((((Diabetic gastric[Title/Abstract] OR (Diabetic gastroparesis[Title/Abstract])) OR (diabetic stomach paresis[Title/Abstract])) OR (Diabetic gastropareses[Title/Abstract])) AND ("Medicine, Chinese Traditional"[Mesh]) OR (((((((Medicine, Chinese Traditional[Title/Abstract]) OR (Traditional Chinese Medicine[Title/Abstract])) OR (Traditional Medicine, Chinese[Title/Abstract])) OR (Chinese Traditional Medicine[Title/Abstract])) OR (Chinese Medicine, Traditional[Title/Abstract])) OR (TCM[Title/Abstract])) OR (Chinese medicine decoction[Title/Abstract])) OR (Chinese herb[Title/Abstract])) OR (Decoction[Title/Abstract]))) AND ("Clinical Trials as Topic"[Mesh]) OR (((((((Clinical Trial[Publication Type]) OR (Clinical Trial[Title/Abstract])) OR (Clinical Trial as Topic[Title/Abstract])) OR (Clinical Trial as Topic[Title/Abstract])) OR (clinic trial[Title/Abstract])) OR (controlled clinical trial[Title/Abstract])) OR (trial[Title/Abstract])) OR (clinical study[Title/Abstract]))))</p>	6
7	<p>("Clinical Trials as Topic"[Mesh]) OR (((((((Clinical Trial[Publication Type]) OR (Clinical Trial[Title/Abstract])) OR (Clinical Trial as Topic[Title/Abstract])) OR (Clinical Trial as Topic[Title/Abstract])) OR (clinic trial[Title/Abstract])) OR (controlled clinical trial[Title/Abstract])) OR (trial[Title/Abstract])) OR (clinical</p>	1,591, 199

	study[Title/Abstract])	
6	("Medicine, Chinese Traditional"[Mesh] OR ((((((((Medicine, Chinese Traditional[Title/Abstract] OR (Traditional Chinese Medicine[Title/Abstract]) OR (Traditional Medicine, Chinese[Title/Abstract]) OR (Chinese Traditional Medicine[Title/Abstract]) OR (Chinese Medicine, Traditional[Title/Abstract]) OR (TCM[Title/Abstract]) OR (Chinese medicine decoction[Title/Abstract]) OR (Chinese herb[Title/Abstract]) OR (Decoction[Title/Abstract])	54,231
5	((((((((Clinical Trial[Publication Type] OR (Clinical Trial[Title/Abstract]) OR (Clinical Trial as Topic[Title/Abstract]) OR (Clinical Trial as Topic[Title/Abstract]) OR (clinic trial[Title/Abstract]) OR (controlled clinical trial[Title/Abstract]) OR (trial[Title/Abstract]) OR (clinical study[Title/Abstract])	1,375, 210
4	((((((((Medicine, Chinese Traditional[Title/Abstract] OR (Traditional Chinese Medicine[Title/Abstract]) OR (Traditional Medicine, Chinese[Title/Abstract]) OR (Chinese Traditional Medicine[Title/Abstract]) OR (Chinese Medicine, Traditional[Title/Abstract]) OR (TCM[Title/Abstract]) OR (Chinese medicine decoction[Title/Abstract]) OR (Chinese herb[Title/Abstract]) OR (Decoction[Title/Abstract])	42,413
3	(((Diabetic gastric[Title/Abstract] OR (Diabetic gastroparesis[Title/Abstract]) OR (diabetic stomach paresis[Title/Abstract]) OR (Diabetic gastropareses[Title/Abstract])	706
2	"Clinical Trials as Topic"[Mesh]	375,433
1	"Medicine, Chinese Traditional"[Mesh]	22,572

Supplementary Table 2 Search Strategy in Cochrane

ID	Search	Hits
#1	MeSH descriptor: [Medicine, Chinese Traditional] explode all trees	1276
#2	(Medicine, Chinese Traditional):ti,ab,kw OR (Traditional Chinese Medicine):ti,ab,kw OR (Traditional Medicine, Chinese):ti,ab,kw OR (Chinese Traditional Medicine):ti,ab,kw OR (Chinese Medicine, Traditional):ti,ab,kw	8226
#3	(TCM):ti,ab,kw OR (Chinese medicine decoction):ti,ab,kw OR (Chinese herb):ti,ab,kw OR (Decoction):ti,ab,kw	8386
#4	MeSH descriptor: [Clinical Trials as Topic] explode all trees	48709
#5	(Clinical Trial):ti,ab,kw OR (Clinical Trial as Topic):ti,ab,kw OR (Intervention Study):ti,ab,kw OR (clinic trial):ti,ab,kw OR (controlled clinical trial):ti,ab,kw	840874
#6	(trial):ti,ab,kw OR (clinical study):ti,ab,kw OR (Clinical Trial):pt	1260305
#7	(Diabetic gastric):ti,ab,kw OR (Diabetic gastroparesis):ti,ab,kw OR (diabetic stomach paresis):ti,ab,kw OR (Diabetic gastropareses):ti,ab,kw	763
#8	#1 OR #2 OR #3	13840
#9	#4 OR #5 OR #6	1338305
#10	#7 AND #8 AND #9	3

Supplementary Table 3 Search Strategy in Embase

No.	Query	Results
#10	#7 AND #8 AND #9	5
#9	#3 OR #6	227233
		4
#8	#2 OR #5	94103
#7	#1 OR #4	1412
#6	'clinical trial':ab,ti OR 'clinical trial as topic':ab,ti OR 'intervention study':ab,ti OR 'clinic trial':ab,ti OR 'controlled clinical trial':ab,ti OR trial:ab,ti OR 'clinical study':ab,ti OR 'clinical trial':it	111632 6
#5	'medicine, chinese traditional':ab,ti OR 'traditional chinese medicine':ab,ti OR 'traditional medicine, chinese':ab,ti OR 'chinese medicine':ab,ti OR 'chinese medicine, traditional':ab,ti OR tcm:ab,ti OR 'chinese medicine decoction':ab,ti OR 'chinese herb':ab,ti OR decoction:ab,ti	61157
#4	'diabetic gastric':ab,ti OR 'diabetic gastroparesis':ab,ti OR 'diabetic stomach paresis':ab,ti OR 'diabetic gastropareses':ab,ti	1214
#3	'clinical trial'/exp	172946
		8
#2	'chinese medicine'/exp	64489
#1	'diabetic stomach paresis'/exp	640

Supplementary Table 4 Search strategy in Web of Science

No.	Query	Results
#1	Diabetic gastric (Mesh) OR Diabetic gastroparesis (Mesh) OR diabetic stomach paresis (Mesh) OR Diabetic gastropareses (Mesh)	3679
#2	Medicine, Chinese Traditional (Mesh) OR Traditional Chinese Medicine (Mesh) OR Traditional Medicine, Chinese (Mesh) OR Chinese Traditional Medicine (Mesh) OR Chinese Medicine, Traditional (Mesh) OR TCM (Mesh) OR Chinese medicine decoction (Mesh) OR Chinese herb (Mesh) OR Decoction (Mesh)	48140
#3	Clinical Trial (Mesh) OR Clinical Trial as Topic (Mesh) OR Intervention Study (Mesh) OR clinic trial (Mesh) OR controlled clinical trial (Mesh) OR trial (Mesh) OR clinical study (Mesh)	2979416
#4	#1 AND #2 AND #3	8

Supplementary Table 5 The algorithms and scripts used in the software to perform the statistical analysis

<p>R (version 4.2.1):</p>	<pre> 1. forest plot: forest(results) 2. ranks <- rank.probability(results,preferredDirection= -1/1) plot(ranks) plot(ranks,beside = TRUE) sucra(ranks) write.csv(ranks,"Franks.csv") 3.library(ggplot2) TFrank<- read.csv('D:\\ data \\ TFranks.csv') P<-ggplot(TFrank,aes(x=rank,y=prob, colour=treatment)) +geom_line(size=2,lty="solid") p1<- P+coord_equal(ratio=2)+geom_point(size=2)+labs(x="rank", y="Cumulative probability")+theme(axis.text element_text(size=12),axis.title=element_text(size=15),panel.b ackground=element_blank(),axis.line = element_line(color="black"), legend.title=element_text(size=15,color="black"),legend.positi on=c(1,0), legend justification=c(1,0)) 4.tb<- relative.effect.table(results) tb1<-round(exp(tb),2) write.csv(tb1,"HbA1c_table.csv") 5. resultanohe <- mtc.anohe(network, n.adapt = 20000, n.iter = 50000, thin = 1, n.chain=4,likelihood="normal",link="identity",linearModel="r andom") c<-summary(resultanohe) print(c) plot(c,digits = 5) </pre>
<p>Stata</p>	<p>1. network setup mean stddev samplesize,studyvar(study)</p>

<p>15.0</p>	<pre> trtvar(treatment) format(augment) network setup responders samplesize,studyvar(study) trtvar(treatment) format(augment) 2. network convert pairs netfunnel _y _stderr _t1 _t2,bycomparison ytitle(standard error of logor) 3. replace _t1="No contact" if _t1=="A" replace _t1="Self help" if _t1=="B" replace _t1="Individual counselling" if _t1=="C" replace _t1="Group counselling" if _t1=="D" replace _t2="No contact" if _t2=="A" replace _t2="Self help" if _t2=="B" replace _t2="Individual counselling" if _t2=="C" replace _t2="Group counselling" if _t2=="D" netfunnel _y _stderr _t1 _t2, bycomparison ytitle(Standard error of logor) netfunnel _y _stderr _t1 _t2, bycomparison ytitle(Standard error of logor) addplot(lfit _stderr _ES_CEN) </pre>
--------------------	--

Supplementary Table 6 Certainty-of-evidence ratings for Traditional Chinese Medicine versus western medicine

Certainty assessment							No of patients		Certainty	Importance
No of studies	Study design	Risk of bias	Inconsistency	Indirectness	Imprecision	Other considerations	TCM	WM		
clinical effects										
53	randomised trials	not serious	not serious	not serious	not serious	none	2063 / 2266 (91.0%)	1642 / 2244 (73.2%)	⊕⊕⊕ ⊕High	CRITICAL
nausea and vomiting scores										
17	randomised trials	not serious	not serious	serious ^a	not serious	none	797	785	⊕⊕⊕ ○ Moderate	CRITICAL
anorexia scores										
10	randomised trials	not serious	not serious	serious ^a	not serious	none	455	448	⊕⊕⊕ ○ Moderate	CRITICAL
early satiety scores										

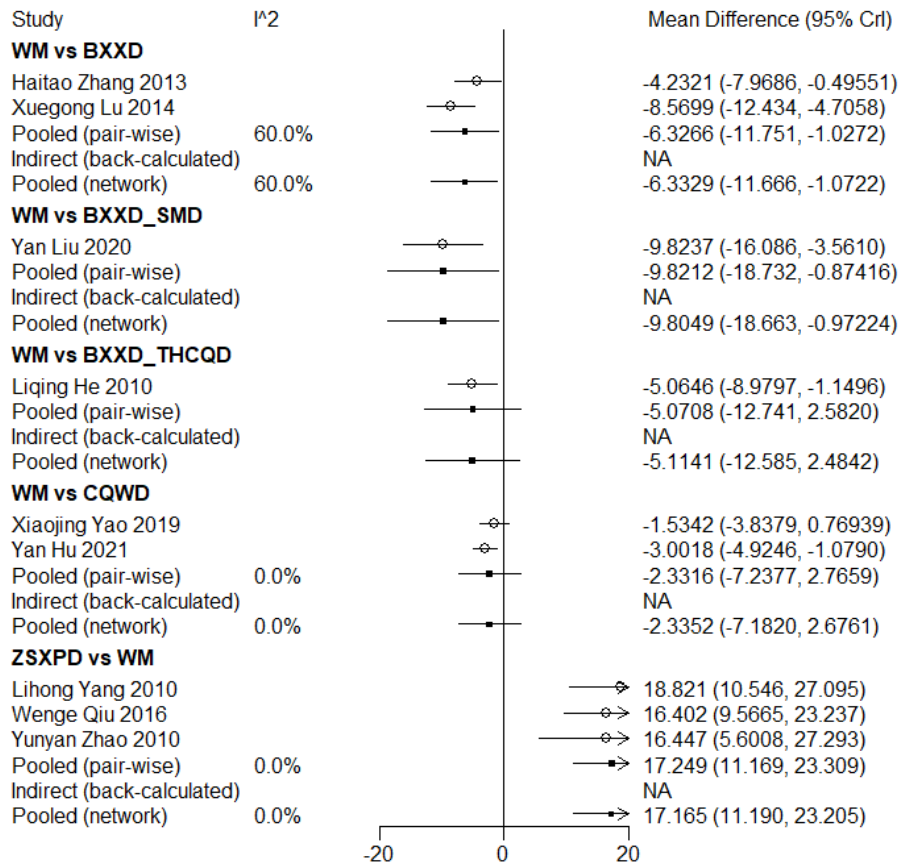
Certainty assessment							No of patients		Certainty	Importance
No of studies	Study design	Risk of bias	Inconsistency	Indirectness	Imprecision	Other considerations	TCM	WM		
13	randomised trials	not serious	not serious	serious ^a	not serious	none	605	599	⊕⊕⊕ ○ Moderate	CRITICAL
bloating scores										
20	randomised trials	not serious	not serious	serious ^a	not serious	none	946	932	⊕⊕⊕ ○ Moderate	CRITICAL
MOT										
22	randomised trials	not serious	not serious	not serious	not serious	none	984	977	⊕⊕⊕ ⊕High	IMPORTANT
SS										
9	randomised trials	not serious	not serious	not serious	not serious	none	420	416	⊕⊕⊕ ⊕High	IMPORTANT
GAS										
13	randomised trials	not serious	not serious	not serious	not serious	none	592	587	⊕⊕⊕ ⊕High	IMPORTANT

Certainty assessment							No of patients		Certainty	Importance
No of studies	Study design	Risk of bias	Inconsistency	Indirectness	Imprecision	Other considerations	TCM	WM		
gastric emptying time										
23	randomised trials	not serious	not serious	not serious	not serious	none	998	993	⊕⊕⊕ ⊕High	IMPORTANT
emptying rate										
9	randomised trials	not serious	not serious	not serious	not serious	none	418	415	⊕⊕⊕ ⊕High	IMPORTANT
adverse drug events										
19	randomised trials	not serious ^b	serious	not serious	not serious	none	33/687 (4.8%)	75/672 (11.2%)	⊕⊕⊕ ○ Moderate	CRITICAL

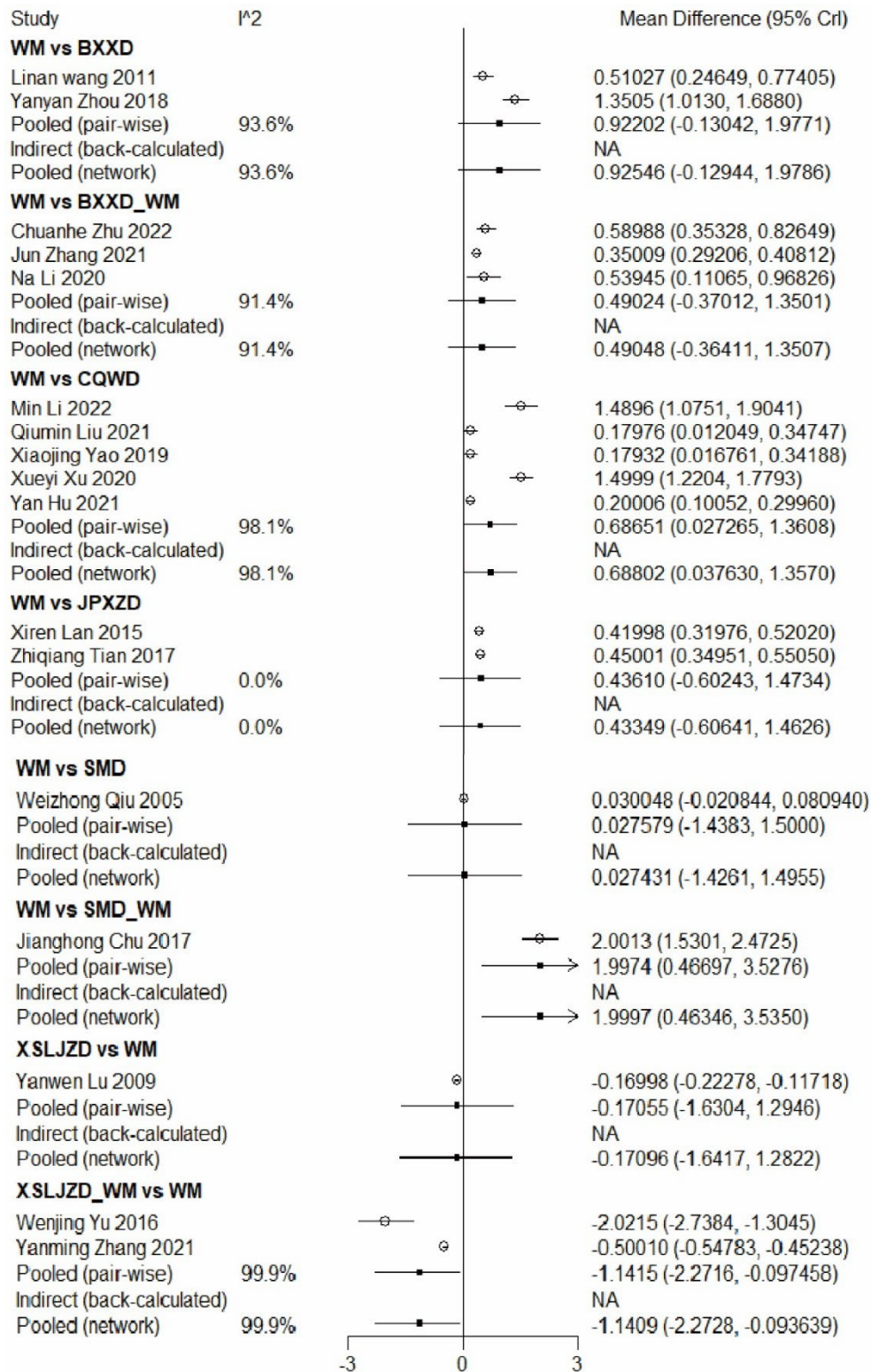
^aIt is the patient's own sensory score, not an indicator of instrumental testing, which may be somewhat biased.

^bDifferent people have different criteria for evaluating adverse reactions.

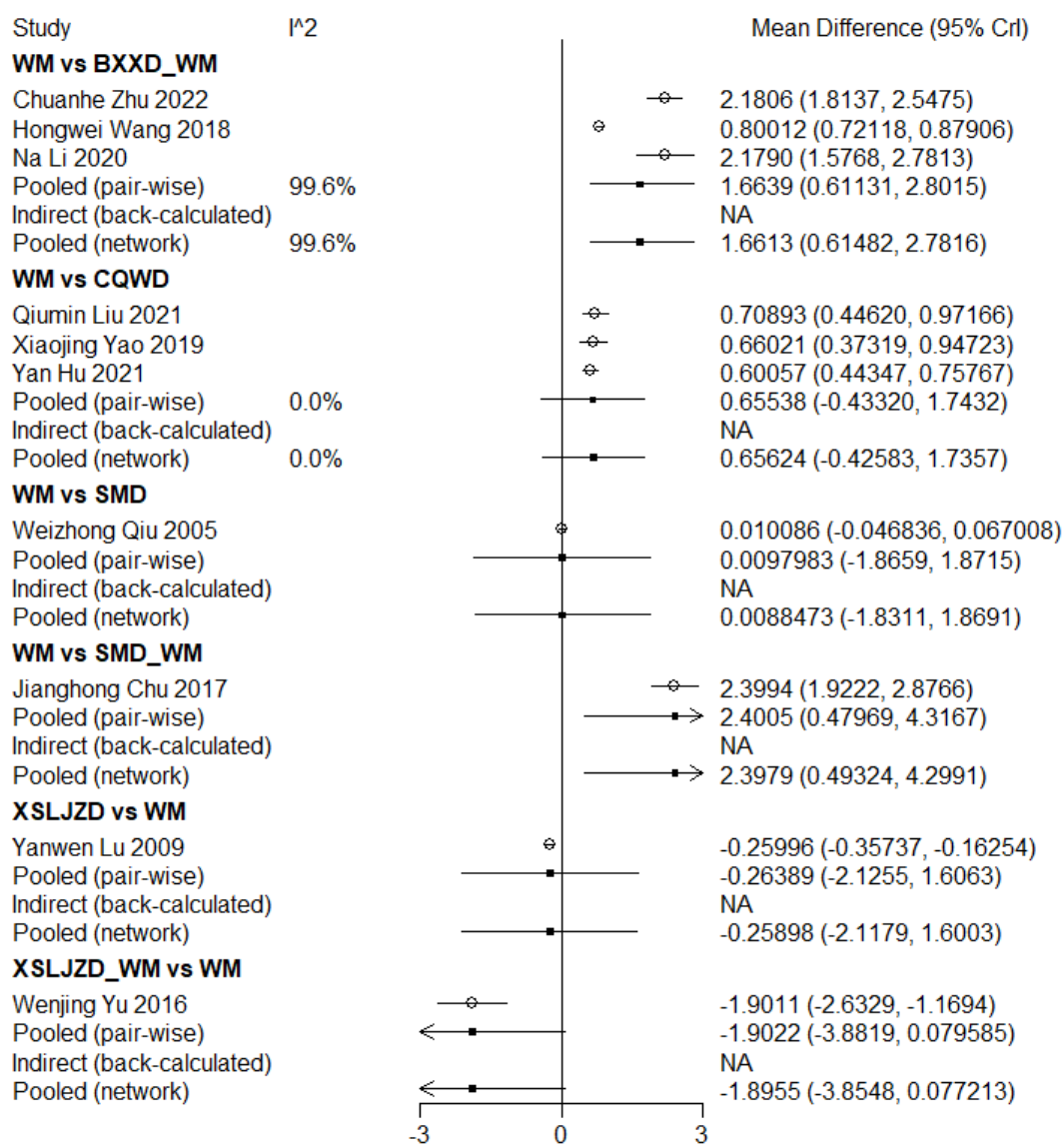
WM: Western medicine; TCM: Traditional Chinese Medicine; MOT: Motilin; SS: Somatostatin; GAS: Gastrin.



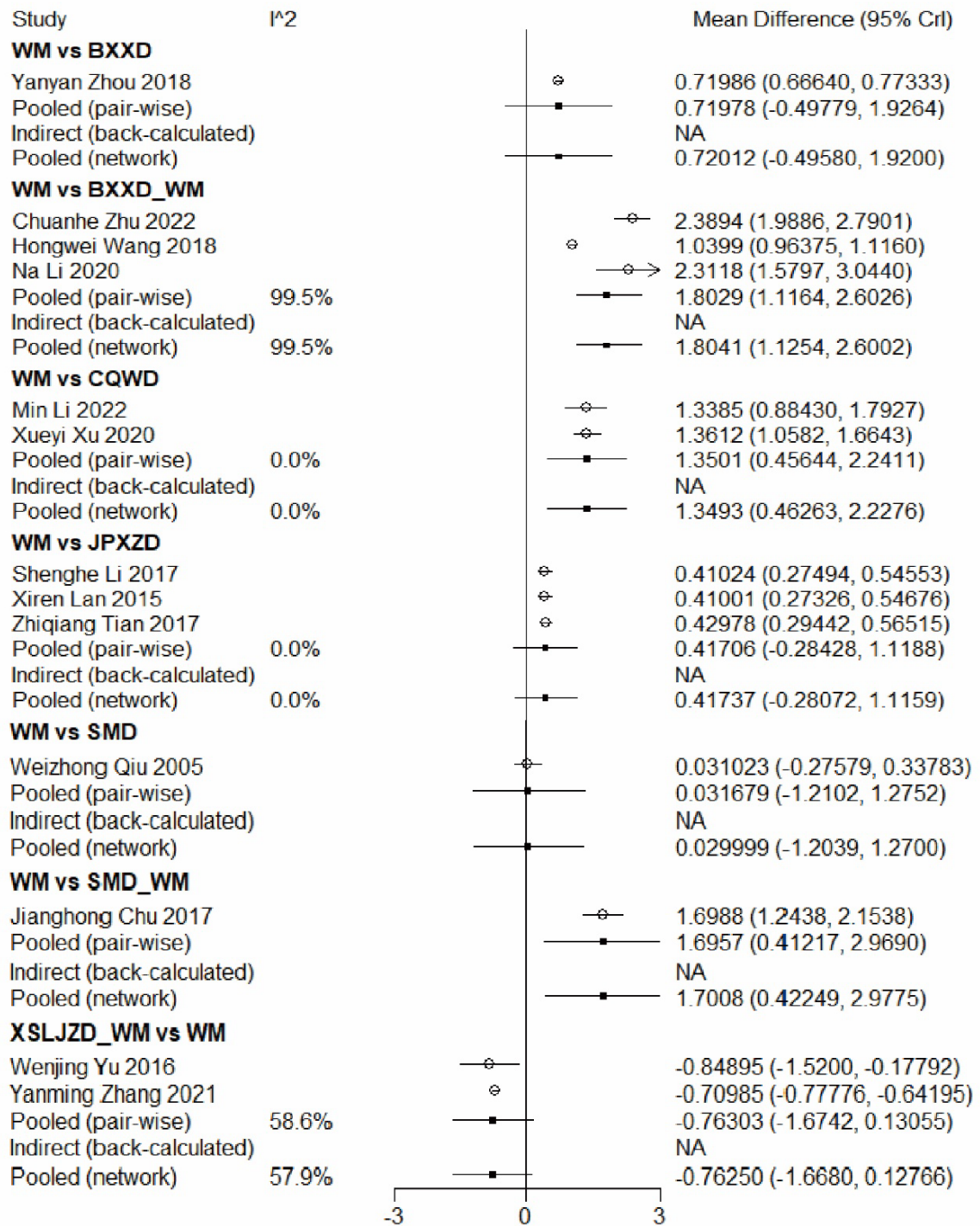
Supplementary Figure 1 Heterogeneity of Clinical effects. WM: Western medicine; BXXD: Banxia Xiexin Decoction; SMD: Simo Decoction; **THCQD:** Taohe Chengqi Decoction; CQWD: Chaiqin-Wendan Decoction; ZSXPD: Zhishi Xiaopi Decoction; NA: Not Applicable.



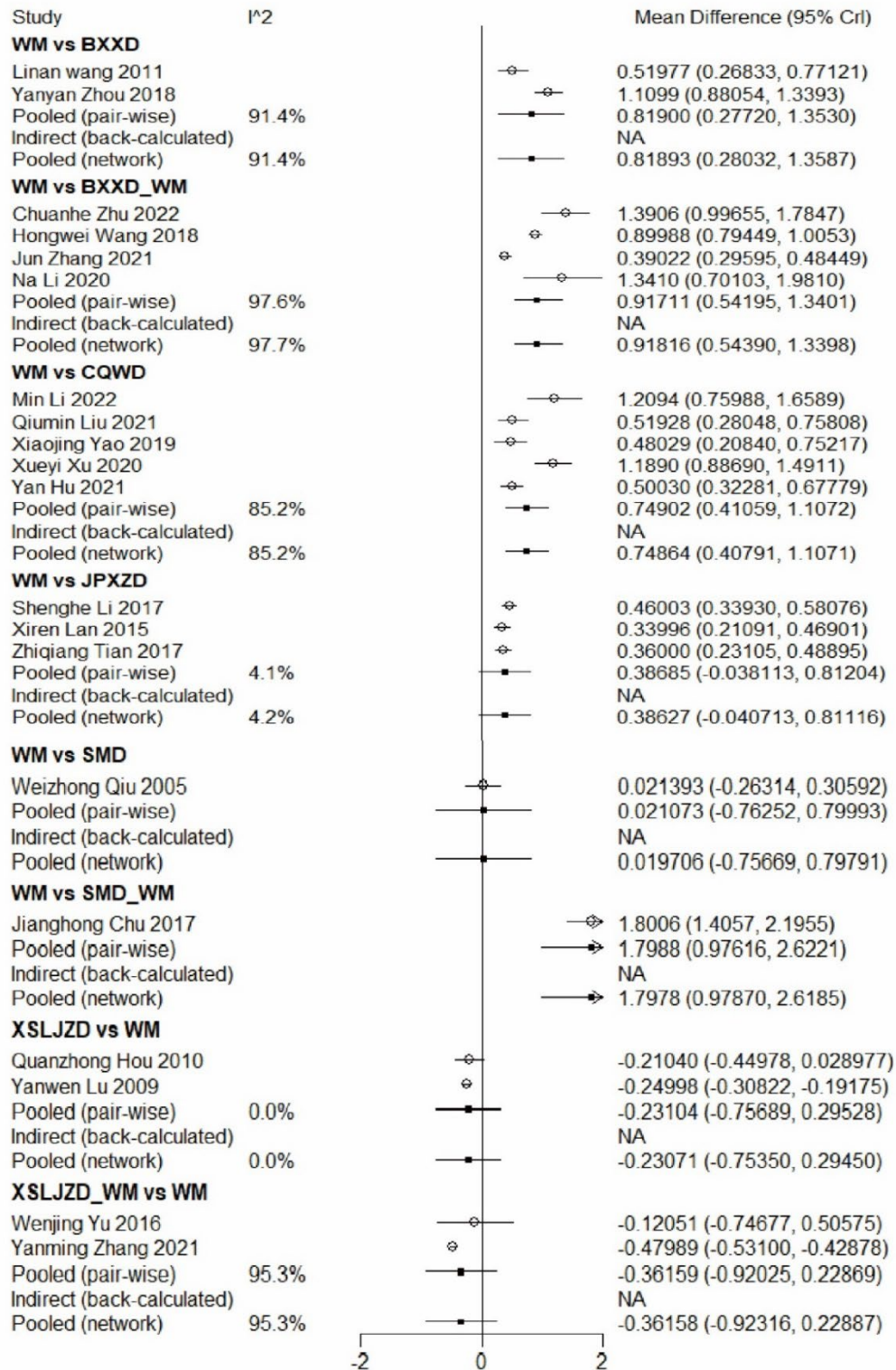
Supplementary Figure 2 Heterogeneity of nausea and vomiting scores. WM: Western medicine; BXXD: Banxia Xiexin Decoction; CQWD: Chaiqin-Wendan Decoction; JPXZD: Jianpi Xiaozhi Decoction; SMD: Simo Decoction; XSLJZD: Xiangshaliujunzi Decoction; NA: Not Applicable.



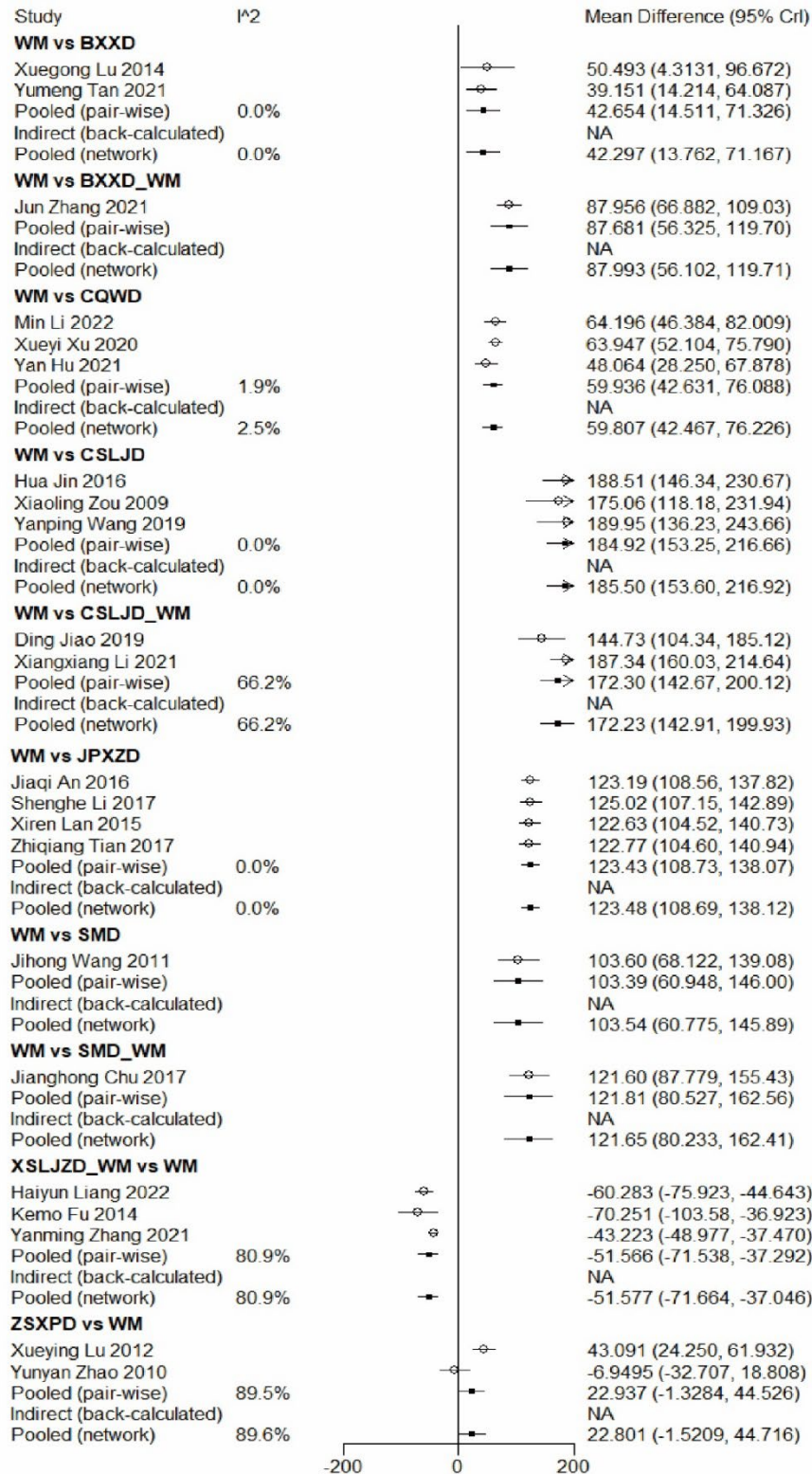
Supplementary Figure 3 Heterogeneity of anorexia scores. WM: Western medicine; BXXD: Banxia Xiexin Decoction; CQWD: Chaiqin-Wendan Decoction; SMD: Simo Decoction; XSLJZD: Xiangshaliujunzi Decoction; NA: Not Applicable.



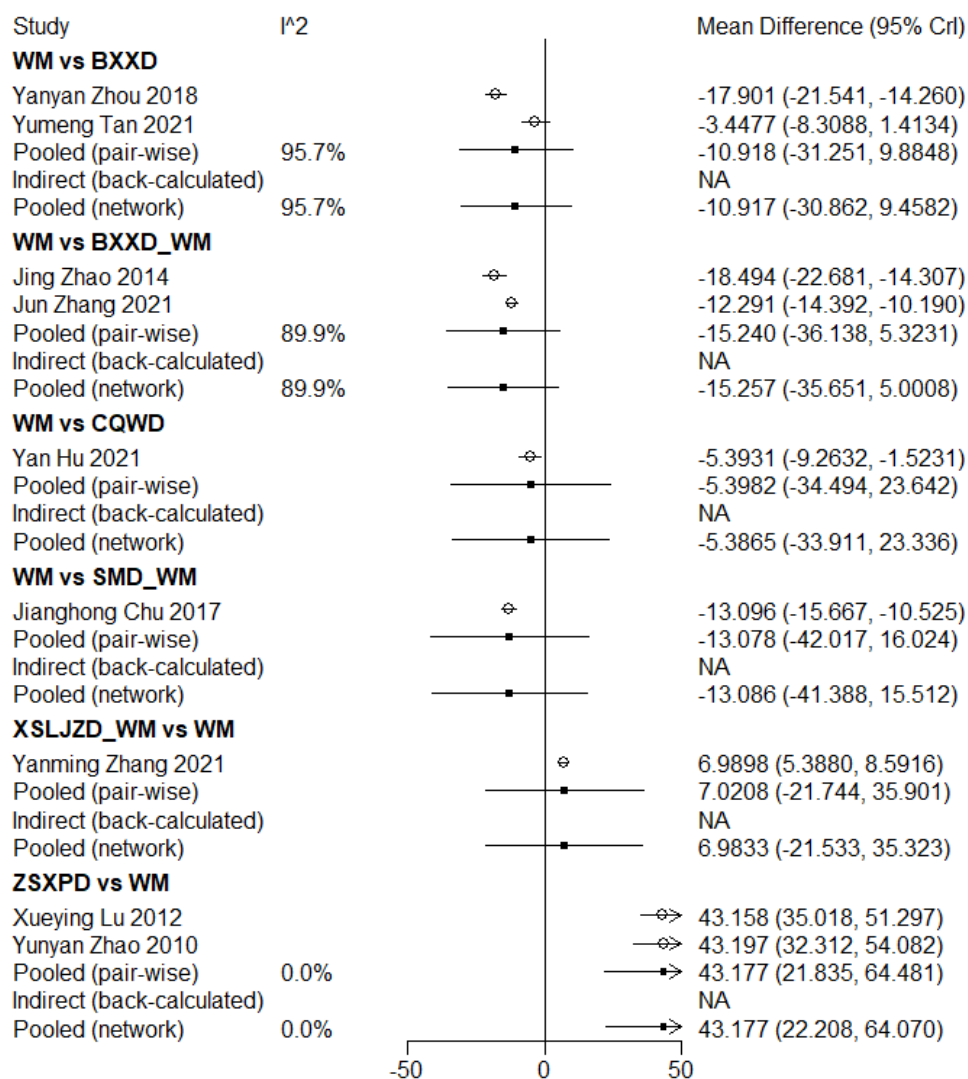
Supplementary Figure 4 Heterogeneity of early satiety scores. WM: Western medicine; BXXD: Banxia Xiexin Decoction; CQWD: Chaiqin-Wendan Decoction; JPXZD: Jianpi Xiaozhi Decoction; SMD: Simo Decoction; XSLJZD: Xiangshaliujunzi Decoction; NA: Not Applicable.



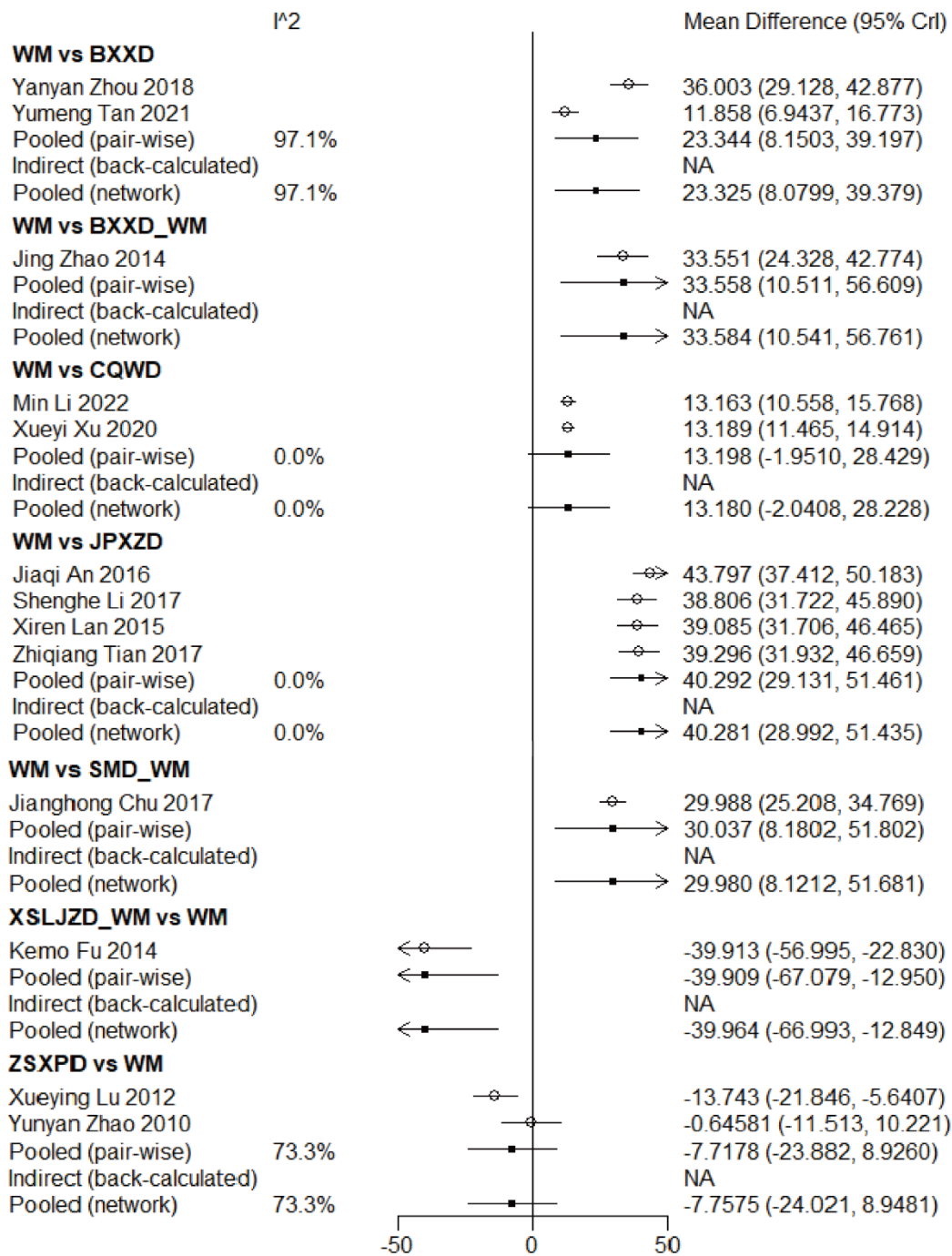
Supplementary Figure 5 Heterogeneity of bloating scores. WM: Western medicine; BXXD: Banxia Xiexin Decoction; CQWD: Chaiqin-Wendan Decoction; JPXZD: Jianpi Xiaozhi Decoction; SMD: Simo Decoction; XSLJZD: Xiangshaliujunzi Decoction; NA: Not Applicable.



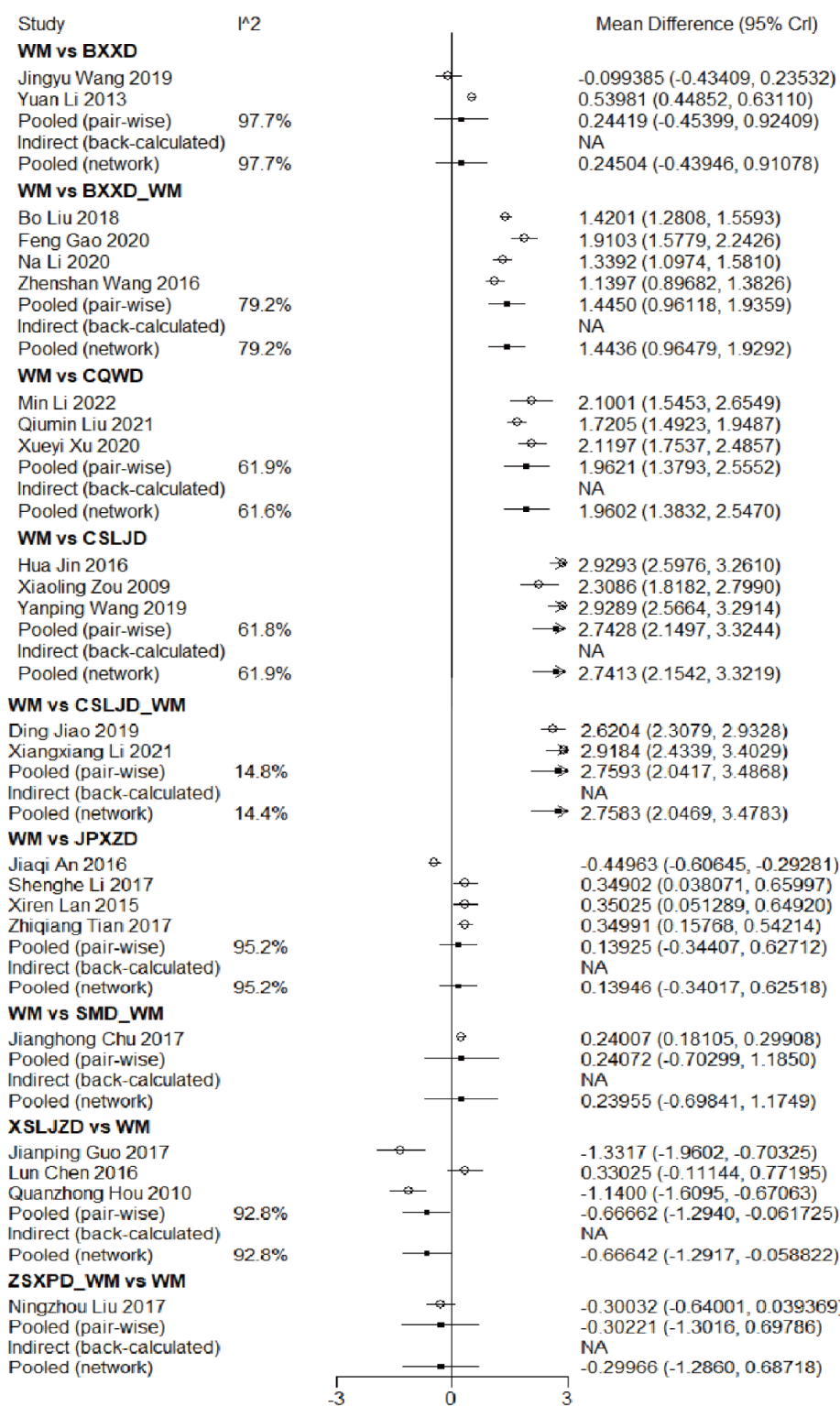
Supplementary Figure 6 Heterogeneity of motilin. WM: Western medicine; BXXD: Banxia Xiexin Decoction; CQWD: Chaiqin-Wendan Decoction; CSLJD: Chaishaoliujun Decoction; JPXZD: Jianpi Xiaozhi Decoction; SMD: Simo Decoction; XSLJZD: Xiangshaliujunzi Decoction; NA: Not Applicable.



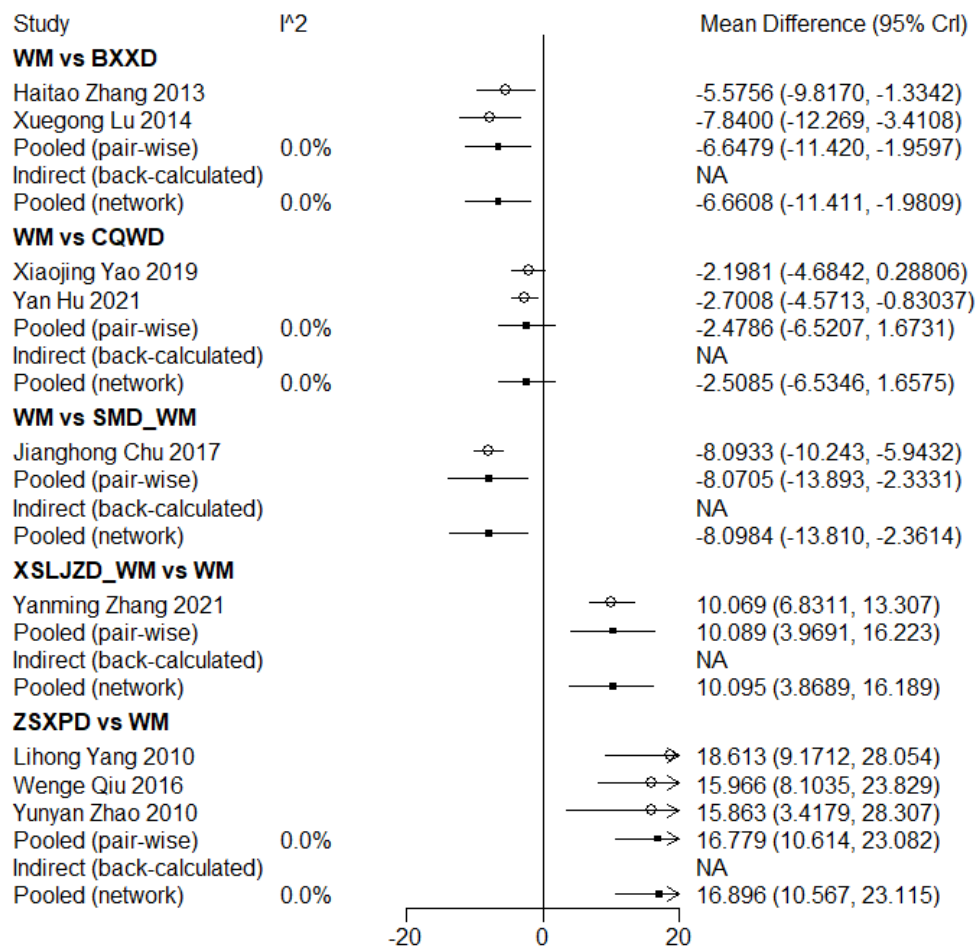
Supplementary Figure 7 Heterogeneity of SS. WM: Western medicine; BXXD: Banxia Xiexin Decoction; CQWD: Chaiqin-Wendan Decoction; SMD: Simo Decoction; XSLJZD: Xiangshaliujunzi Decoction; NA: Not Applicable.



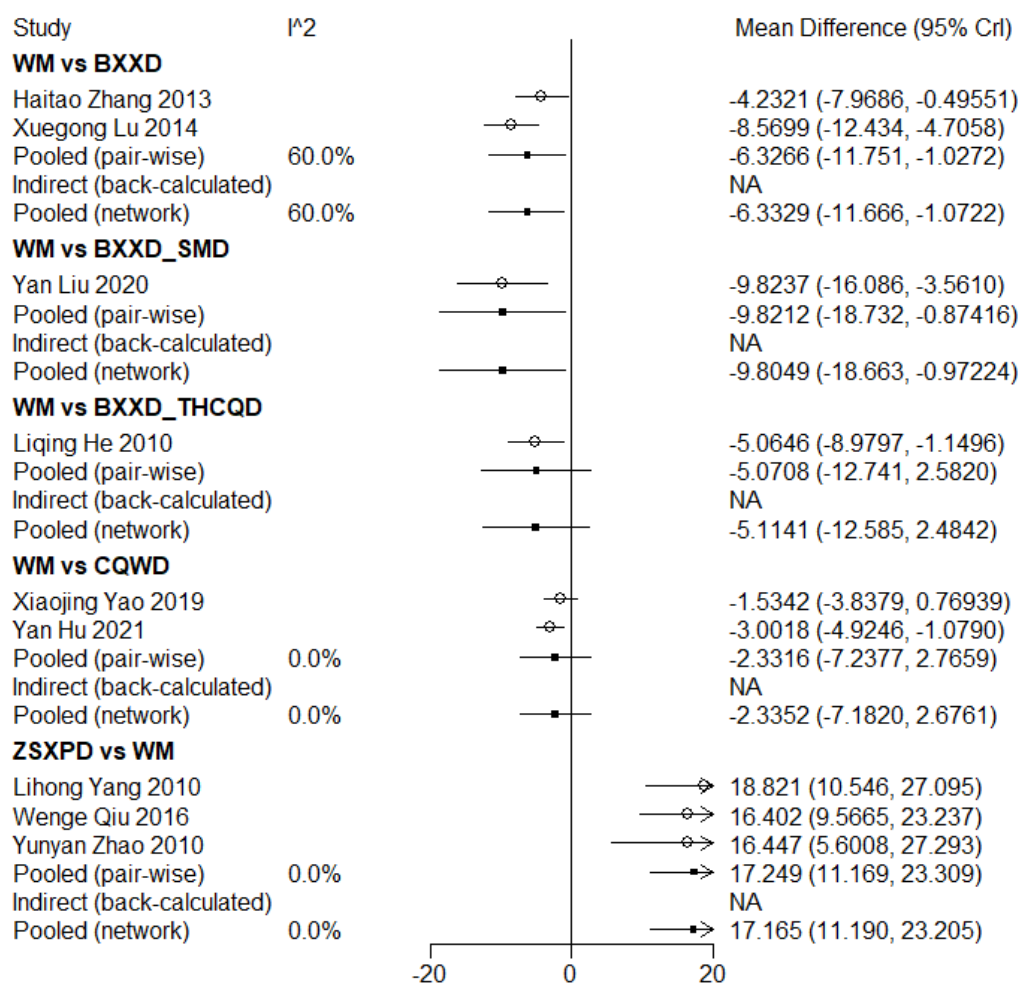
Supplementary Figure 8 Heterogeneity of gastrin. WM: Western medicine; BXXD: Banxia Xiexin Decoction; CQWD: Chaiqin-Wendan Decoction; JPXZD: Jianpi Xiaozhi Decoction; SMD: Simo Decoction; XSLJZD: Xiangshaliujunzi Decoction; ZSXPD: Zhishi Xiaopi Decoction; NA: Not Applicable.



Supplementary Figure 9 Heterogeneity of gastric emptying time. WM: Western medicine; BXXD: Banxia Xiexin Decoction; CQWD: Chaiqin-Wendan Decoction; CSLJD: Chaishaoliujun Decoction; JPXZD: Jianpi Xiaozhi Decoction; SMD: Simo Decoction; XSLJZD: Xiangshaliujunzi Decoction; ZSXPD: Zhishi Xiaopi Decoction; NA: Not Applicable.



Supplementary Figure 10 Heterogeneity of emptying rate. WM: Western medicine; BXXD: Banxia Xiexin Decoction; CQWD: Chaiqin-Wendan Decoction; SMD: Simo Decoction; XSLJZD: Xiangshaliujunzi Decoction; ZSXPD: Zhishi Xiaopi Decoction; NA: Not Applicable.



Supplementary Figure 11 Heterogeneity of adverse drug events. WM: Western medicine; BXXD: Banxia Xiexin Decoction; SMD: Simo Decoction; THCQD: Taohe Chengqi Decoction; CQWD: Chaiqin-Wendan Decoction; ZSXPD: Zhishi Xiaopi Decoction; NA: Not Applicable.