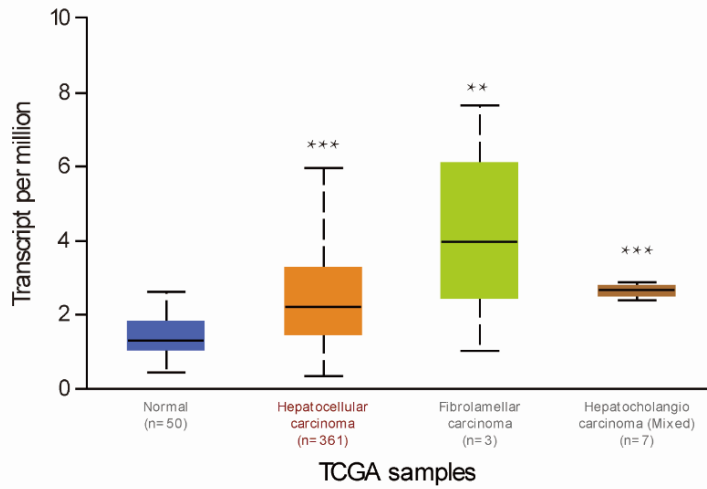
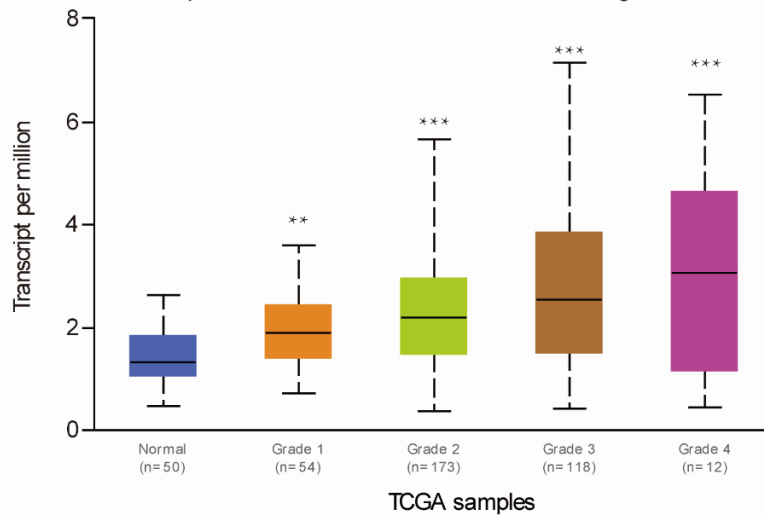


A

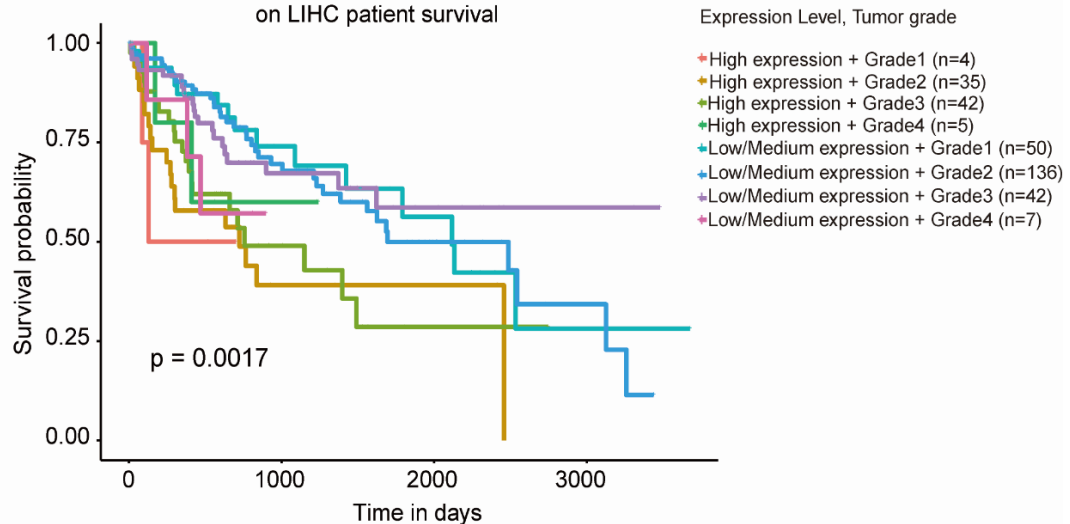
Expression of GMEB1 in LIHC based on Histological subtypes

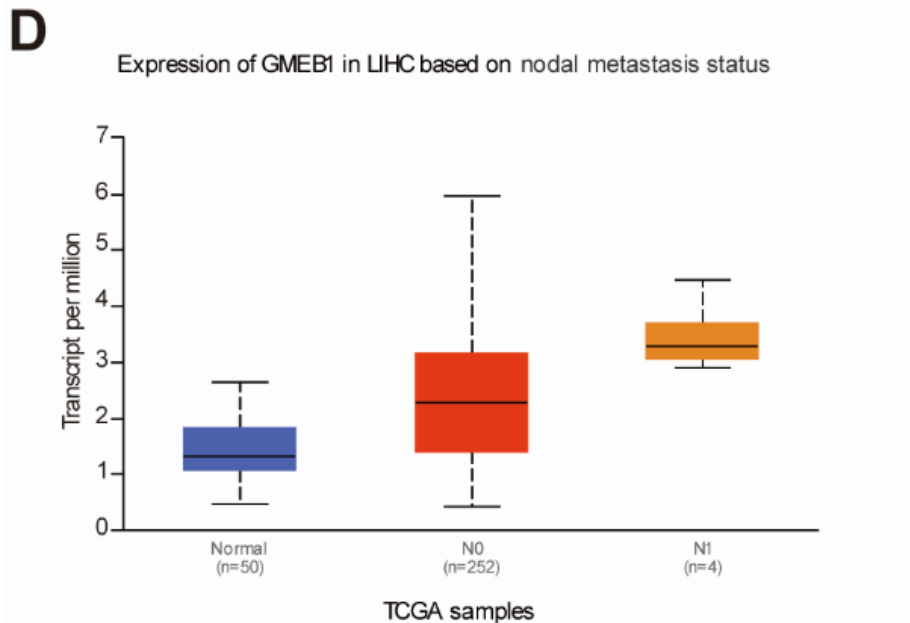
**B**

Expression of GMEB1 in LIHC based on tumor grade

**C**

Effect of GMEB1 expression level & Tumor grade on LIHC patient survival





Supplementary Figure 1 Glucocorticoid modulatory element-binding protein 1 is highly expressed in hepatocellular carcinoma. A: The UALCAN database (<https://ualcan.path.uab.edu/>) was employed to analyze the correlation between GMEB1 and liver cancer histological types. B: The UALCAN database (<https://ualcan.path.uab.edu/>) was used to analyze the correlation between GMEB1 and liver tumor grade. C: The UALCAN database (<https://ualcan.path.uab.edu/>) was utilized to analyze the correlation between GMEB1 expression level & tumor grade and liver cancer patient survival. D: The UALCAN database (<https://ualcan.path.uab.edu/>) was applied to analyze the correlation between GMEB1 and nodal metastasis status.