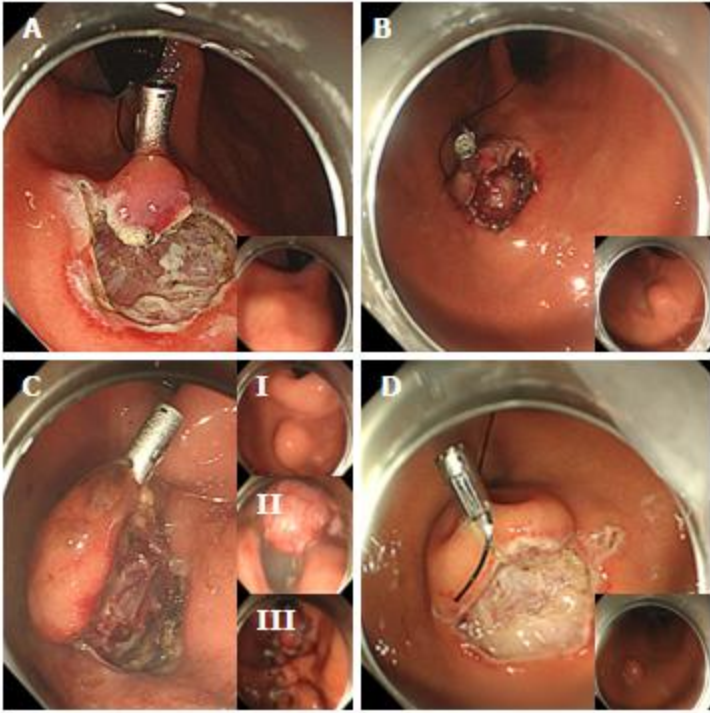
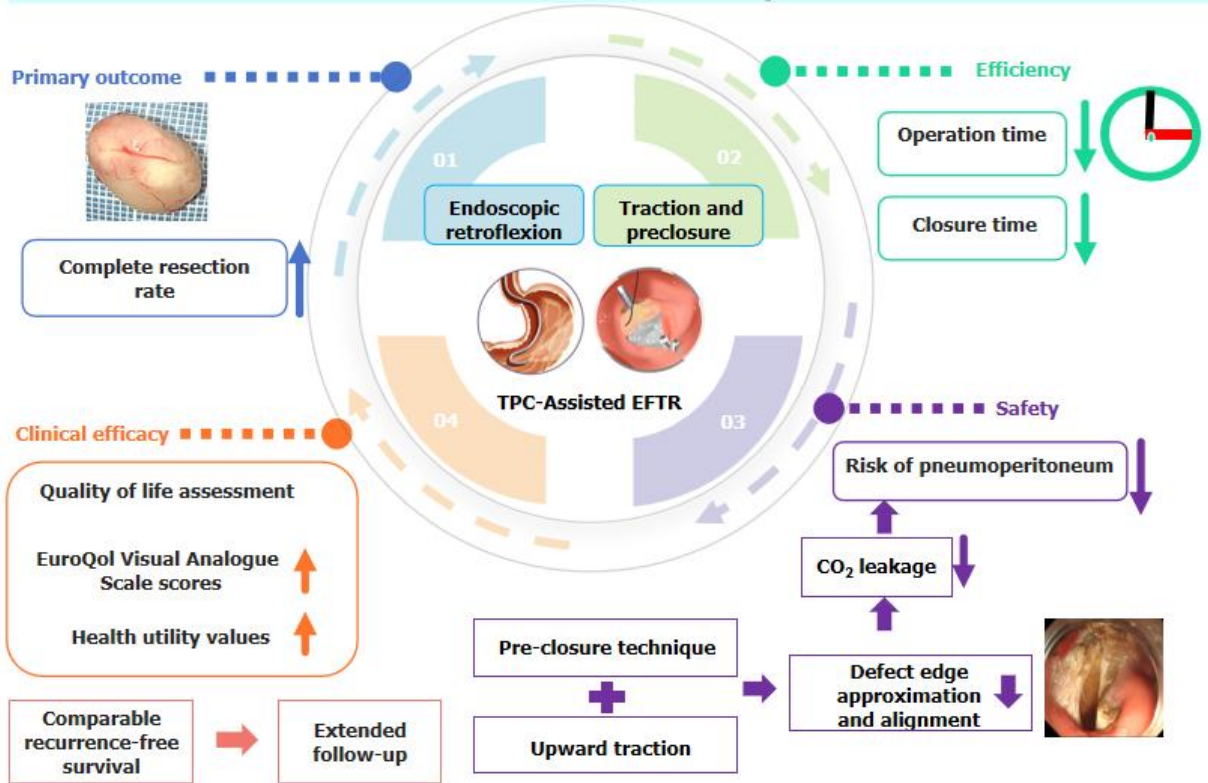


Supplementary Figure 1 Study flowchart.



Supplementary Figure 2

Traction-Preclosure-Assisted Versus Conventional Endoscopic Full-Thickness Resection for Gastric Subepithelial Tumors



Supplementary Figure 3

Supplemental Table 1 Chinese EQ-5D-5 L value set

Dimension	No problems	Slight problems	Moderate problems	Severe problems	Extreme problems
Mobility	0	0.066	0.158	0.287	0.345
Self-care	0	0.048	0.016	0.210	0.253
Usual activities	0	0.045	0.107	0.194	0.233
Pain/discomfort	0	0.058	0.138	0.252	0.302
Anxiety/depression	0	0.049	0.118	0.215	0.258

Supplemental Table 2 Changes in perioperative blood parameters

Procedural characteristics	Control group (N = 129)	Experimental group (N = 85)	chi-square/t/Z	P
Preop Hb, median (IQR), g/L	132.0 (20.0)	136.0 (17.5)	Z = 1.016	0.310
Postop Hb, median (IQR), g/L	127.0 (16.0)	129.0 (21.0)	Z = 0.528	0.597
Preop Alb, median (IQR), g/L	43.4 (3.25)	44.2 (3.35)	Z = 1.593	0.111
Postop Alb, median (IQR), g/L	40.3 (3.55)	40.7 (4.30)	Z = 0.752	0.452
PREOP ALT, MEDIAN (IQR), U/L	20.0 (11.0)	20.0 (12.5)	Z = 0.263	0.792
Postop ALT, median (IQR), U/L	15.0 (4.5)	16.0 (8.0)	Z = 1.199	0.230
Preop Cr, mean \pm SD, μ mol/L	65.2 \pm 14.3	63.5 \pm 12.0	t = 0.952	0.342
Postop Cr, median (IQR), μ mol/L	63.0 (15.8)	61.7 (17.5)	Z = 0.161	0.872
Preop WBC, mean \pm SD, $\times 10^9$ /L	5.4 \pm 1.3	5.5 \pm 1.5	t = -0.442	0.659
Postop WBC, median (IQR), $\times 10^9$ /L	9.5 (5.0)	9.1 (4.6)	Z = 1.194	0.233
Preop CRP, median (IQR), mg/L	0.8 (0.9)	1.0 (1.2)	Z = 0.701	0.483
Postop CRP, median (IQR), mg/L	14.3 (23.8)	13.5 (16.2)	Z = 0.213	0.831
Preop NLR, median (IQR)	2.2 (1.1)	2.3 (1.8)	Z = 1.106	0.269

Postop NLR, median 6.0 (6.0) 5.7 (4.6) $Z = 0.698$ 0.485
(IQR)

Preop: Preoperative; Postop: Postoperative; Hb: Hemoglobin; Alb: Albumin; ALT: Alanine aminotransferase; Cr: Creatinine; CRP: C-reactive protein; NLR: Neutrophil-to-lymphocyte ratio.

Supplemental Table 3 Sensitivity analysis of postoperative QOL adjusted for baseline covariates

Procedural characteristics	Estimate	Std. error	<i>t</i>	<i>P</i>	95%CI
Intercept (EQ-VAS)	30.8	6.8	4.500	< 0.001	17.3–44.3
Preop EQ-VAS score	0.6	0.1	7.724	< 0.001	0.4–0.7
Group (EG)	2.1	0.8	2.552	0.011	0.5–3.8
Age	0.05	0.04	1.253	0.212	–0.03 to 0.12
Comorbidities (yes)	1.5	0.9	1.603	0.110	–0.3 to 3.4
Size of tumor	–0.8	0.5	–1.482	0.140	–1.8 to 0.2
Intercept (health utility values)	0.47	0.05	9.967	< 0.001	0.4–0.6
Preop health utility values	0.48	0.05	10.086	< 0.001	0.4–0.6
Group (EG)	0.03	0.01	3.846	< 0.001	0.01–0.04
Age	0.00	0.00	0.624	0.533	–0.0 to 0.0
Comorbidities (yes)	–0.00	0.01	–0.396	0.692	–0.02 to 0.01
Size of tumor	–0.00	0.00	–1.210	0.228	–0.01 to 0.00

Supplemental Table 4 Comparison of survival rates and restricted mean survival time at specific time points

Procedural characteristics	Control group (N = 129)	Experimental group (N = 85)	Z	P	>
12-MONTH RFS	1 (95%CI: 1.0-1.0)	1 (95%CI: 1.0-1.0)	Z = 0.000	P = 0.999	>
24-MONTH RFS	0.9 (95%CI: 0.9-1.0)	1 (95%CI: 1.0-1.0)	Z ≈ 0.001	P ≈ 0.999	>
RMST (TAU = 36 MONTHs)	35.0 (95%CI: 34.1-36.0)	35.0 (95%CI: 33.1-36.9)	Z = 0.000	P = 0.999	>
ΔRMST (EG - CG)	-0.05 (95%CI: -2.1 to -2.0)		Z = 0.046	P = 0.963	=