

World Journal of *Stem Cells*

Monthly Volume 17 Number 8 August 26, 2025



EDITORIAL

Liu N, Wan XX, Yan WT, Xiong K. L-arginine: A promising metabolite in enhancing the protective effects of adipose-derived stem cells against ischemic pathologies. *World J Stem Cells* 2025; 17(8): 111497 [DOI: [10.4252/wjsc.v17.i8.111497](https://doi.org/10.4252/wjsc.v17.i8.111497)]

OPINION REVIEW

Choudhery MS, Arif T, Mahmood R. Applications of artificial intelligence in stem cell therapy. *World J Stem Cells* 2025; 17(8): 106086 [DOI: [10.4252/wjsc.v17.i8.106086](https://doi.org/10.4252/wjsc.v17.i8.106086)]

REVIEW

ShamsEldeen AM, Hosny SA, Maghib K, Ashour H. Current perspectives on regenerative potential of mesenchymal stem cells in alleviating cardiac injuries: Molecular pathways and therapeutic enhancement. *World J Stem Cells* 2025; 17(8): 107480 [DOI: [10.4252/wjsc.v17.i8.107480](https://doi.org/10.4252/wjsc.v17.i8.107480)]

Zhang MJ, Chan SX, Jia ZG, Lv C, Chen JJ, Hong SC. Roles of intestinal stem cells in inflammatory bowel disease pathogenesis. *World J Stem Cells* 2025; 17(8): 107639 [DOI: [10.4252/wjsc.v17.i8.107639](https://doi.org/10.4252/wjsc.v17.i8.107639)]

Cui CX, Shao XN, Li YY, Qiao L, Lin JT, Guan LH. Therapeutic potential of mesenchymal stem cells in neurodegenerative diseases. *World J Stem Cells* 2025; 17(8): 107717 [DOI: [10.4252/wjsc.v17.i8.107717](https://doi.org/10.4252/wjsc.v17.i8.107717)]

Shan XQ, He MH, Gao WL, Li YJ, Liu SZ, Liu Y, Wang CL, Zhao L, Xu SX. Mesenchymal stem cell-derived exosomes: Shaping the next era of Alzheimer's disease treatment. *World J Stem Cells* 2025; 17(8): 109006 [DOI: [10.4252/wjsc.v17.i8.109006](https://doi.org/10.4252/wjsc.v17.i8.109006)]

MINIREVIEWS

Liu L, Behera TR, Wang QJ, Shen QQ. Advances in mesenchymal stem cell therapy for lupus nephritis. *World J Stem Cells* 2025; 17(8): 104930 [DOI: [10.4252/wjsc.v17.i8.104930](https://doi.org/10.4252/wjsc.v17.i8.104930)]

Kacaroglu D, Gurbuz N. Comparison of therapeutic potential of macrophage- or mesenchymal stem cell-derived exosomes in pancreatic cancer: An updated review. *World J Stem Cells* 2025; 17(8): 107400 [DOI: [10.4252/wjsc.v17.i8.107400](https://doi.org/10.4252/wjsc.v17.i8.107400)]

Xiao Y, Zeng FY, Chen ZY, Zhao F, Sun JL. Advances in mesenchymal stem cell-based therapies for recurrent spontaneous abortion. *World J Stem Cells* 2025; 17(8): 108695 [DOI: [10.4252/wjsc.v17.i8.108695](https://doi.org/10.4252/wjsc.v17.i8.108695)]

ORIGINAL ARTICLE**Retrospective Study**

Niu YX, Hu M, Zhao WF, Yang HJ. Expression of stem cell marker musashi-1 and its relationship with survival prognosis in patients with resectable esophageal squamous cell carcinoma. *World J Stem Cells* 2025; 17(8): 107013 [DOI: [10.4252/wjsc.v17.i8.107013](https://doi.org/10.4252/wjsc.v17.i8.107013)]

Basic Study

Yang CW, Zhang YQ, Chang H, Gao R, Chen D, Yao H. Aligned nanofiber scaffolds combined with cyclic stretch facilitate mesenchymal stem cell differentiation for ligament engineering. *World J Stem Cells* 2025; 17(8): 107124 [DOI: [10.4252/wjsc.v17.i8.107124](https://doi.org/10.4252/wjsc.v17.i8.107124)]

SYSTEMATIC REVIEWS

Alves ADH, Ennes do Valle NM, Yokota-Moreno BY, Galanciak MCDS, Felix da Silva K, Mamani JB, Sertie AL, de Oliveira FA, Nucci MP, Gamarra LF. Stem cell-derived neural organoids as platforms to investigate glioblastoma invasion and migration: A systematic review. *World J Stem Cells* 2025; 17(8): 108898 [DOI: [10.4252/wjsc.v17.i8.108898](https://doi.org/10.4252/wjsc.v17.i8.108898)]

META-ANALYSIS

Safwan M, Bourgleh MS, Baroudi L, Almsned A, AlBalawi R, Aibour B, AlFawaz S, Bourgleh SM, Haider KH. Entering the era of living biopharmaceuticals for treating knee osteoarthritis: A systematic review and network meta-analysis. *World J Stem Cells* 2025; 17(8): 107076 [DOI: [10.4252/wjsc.v17.i8.107076](https://doi.org/10.4252/wjsc.v17.i8.107076)]

LETTER TO THE EDITOR

Han LF, Fu GK, Wen YQ, Bian XL. Advancing mechanistic insights and clinical translation of exosomal miR-137-3p in endometrial regeneration. *World J Stem Cells* 2025; 17(8): 109106 [DOI: [10.4252/wjsc.v17.i8.109106](https://doi.org/10.4252/wjsc.v17.i8.109106)]

ABOUT COVER

Editorial Board of *World Journal of Stem Cells*, Rui-Li Yang, DDS, PhD, Assistant Professor, Associate Professor, Department of Orthodontics, Peking University School and Hospital of Stomatology, National Engineering Laboratory for Digital and Material Technology of Stomatology, Beijing Key Laboratory of Digital Stomatology, Beijing 100081, China. ruiyangabc@163.com

AIMS AND SCOPE

The primary aim of *World Journal of Stem Cells* (*WJSC*, *World J Stem Cells*) is to provide scholars and readers from various fields of stem cells with a platform to publish high-quality basic and clinical research articles and communicate their research findings online. *WJSC* publishes articles reporting research results obtained in the field of stem cell biology and regenerative medicine, related to the wide range of stem cells including embryonic stem cells, germline stem cells, tissue-specific stem cells, adult stem cells, mesenchymal stromal cells, induced pluripotent stem cells, embryonal carcinoma stem cells, hemangioblasts, lymphoid progenitor cells, *etc.*

INDEXING/ABSTRACTING

The *WJSC* is now abstracted and indexed in Science Citation Index Expanded (SCIE, also known as SciSearch®), Journal Citation Reports/Science Edition, PubMed, PubMed Central, Scopus, Biological Abstracts, BIOSIS Previews, Reference Citation Analysis, China Science and Technology Journal Database, and Superstar Journals Database. The 2025 Edition of Journal Citation Reports® cites the 2024 journal impact factor (JIF) for *WJSC* as 3.6; JIF without journal self cites: 3.3; 5-year JIF: 4.4; JIF Rank: 100/204 in cell biology; JIF Quartile: Q2; and 5-year JIF Quartile: Q2. The *WJSC*'s CiteScore for 2024 is 6.9 and Scopus CiteScore rank 2024:Histology is 13/61; Genetics is 97/348; Genetics (clinical) is 24/100; Molecular Biology is 152/410; Cell Biology is 122/285.

RESPONSIBLE EDITORS FOR THIS ISSUE

Production Editor: *Xiang-Di Zhang*; Production Department Director: *Xu Guo*; Cover Editor: *Jia-Ru Fan*.

NAME OF JOURNAL

World Journal of Stem Cells

ISSN

ISSN 1948-0210 (online)

LAUNCH DATE

December 31, 2009

FREQUENCY

Monthly

EDITORS-IN-CHIEF

Shengwen Calvin Li

EDITORIAL BOARD MEMBERS

<https://www.wjgnet.com/1948-0210/editorialboard.htm>

PUBLICATION DATE

August 26, 2025

COPYRIGHT

© 2025 Baishideng Publishing Group Inc

INSTRUCTIONS TO AUTHORS

<https://www.wjgnet.com/bpg/gerinfo/204>

GUIDELINES FOR ETHICS DOCUMENTS

<https://www.wjgnet.com/bpg/GerInfo/287>

GUIDELINES FOR NON-NATIVE SPEAKERS OF ENGLISH

<https://www.wjgnet.com/bpg/gerinfo/204>

PUBLICATION ETHICS

<https://www.wjgnet.com/bpg/GerInfo/288>

PUBLICATION MISCONDUCT

<https://www.wjgnet.com/bpg/gerinfo/208>

ARTICLE PROCESSING CHARGE

<https://www.wjgnet.com/bpg/gerinfo/242>

STEPS FOR SUBMITTING MANUSCRIPTS

<https://www.wjgnet.com/bpg/GerInfo/239>

ONLINE SUBMISSION

<https://www.f6publishing.com>

Roles of intestinal stem cells in inflammatory bowel disease pathogenesis

Meng-Jie Zhang, Shi-Xin Chan, Ze-Guo Jia, Chuang Lv, Jia-Jie Chen, Shao-Cheng Hong

Specialty type: Cell and tissue engineering

Provenance and peer review: Invited article; Externally peer reviewed.

Peer-review model: Single blind

Peer-review report's classification

Scientific Quality: Grade A, Grade B, Grade B

Novelty: Grade B, Grade B, Grade C

Creativity or Innovation: Grade B, Grade B, Grade C

Scientific Significance: Grade A, Grade B, Grade B

P-Reviewer: Ma JY; Nwabo Kamdje AH

Received: March 28, 2025

Revised: May 26, 2025

Accepted: July 14, 2025

Published online: August 26, 2025

Processing time: 146 Days and 20.6 Hours



Meng-Jie Zhang, Chuang Lv, Shao-Cheng Hong, Department of Gastroenterology, The First Affiliated Hospital of Anhui Medical University, Hefei 230022, Anhui Province, China

Shi-Xin Chan, Department of General Surgery, The First Affiliated Hospital of Anhui Medical University, Hefei 230022, Anhui Province, China

Ze-Guo Jia, Department of Emergency, The First Affiliated Hospital of University of Science and Technology of China, Division of Life Sciences and Medicine, University of Science and Technology of China, Hefei 230036, Anhui Province, China

Jia-Jie Chen, Department of Dermatology, The First Affiliated Hospital of Anhui Medical University, Hefei 230022, Anhui Province, China

Co-first authors: Meng-Jie Zhang and Shi-Xin Chan.

Co-corresponding authors: Jia-Jie Chen and Shao-Cheng Hong.

Corresponding author: Shao-Cheng Hong, MD, Department of Gastroenterology, The First Affiliated Hospital of Anhui Medical University, No. 81 Meishan Road, Hefei 230022, Anhui Province, China. hscahmu@163.com

Abstract

Inflammatory bowel disease (IBD), consisting primarily of ulcerative colitis and Crohn's disease, is a chronic, relapsing inflammatory disorder of the gastrointestinal tract. The pathogenesis of IBD has been thoroughly studied throughout the past few decades, such as defective gut epithelial barrier, immune responses, genetic predisposition, infections, and dysbiosis. Recent studies have revealed the unexpected importance of intestinal stem cells (ISCs) in the pathophysiology of IBD. The rapid recovery and continuous self-renewal of intestinal epithelial cells depend on ISCs within the crypts. Proliferation and differentiation of ISCs is an important cytological basis for repairing damaged intestinal mucosa. Unfortunately, as a new therapeutic goal in IBD, mucosal healing is difficult to achieve with current treatments. Stem cell therapy is an emerging treatment for IBD that allows mucosal healing by rebuilding the mucosal barrier. In this review, we present the current research progress on the role of ISCs in IBD and discuss stem cell-based therapies that have been specifically designed for its treatment.

Key Words: Intestinal stem cells; Inflammatory bowel disease; Pathogenesis; Therapy potential; Clinical application

Core Tip: Inflammatory bowel disease (IBD) is a chronic and relapsing inflammatory disorder of the gastrointestinal tract that severely compromises the quality of life of patients. Intestinal stem cell proliferation and differentiation underlie damaged mucosa repair. However, mucosal healing - a key IBD therapeutic target - remains elusive with current treatments. Emerging stem cell therapy promotes mucosal barrier restoration, offering IBD intervention. This review examines intestinal stem cell roles in IBD pathogenesis and discusses specifically engineered stem cell-based therapies for management.

Citation: Zhang MJ, Chan SX, Jia ZG, Lv C, Chen JJ, Hong SC. Roles of intestinal stem cells in inflammatory bowel disease pathogenesis. *World J Stem Cells* 2025; 17(8): 107639

URL: <https://www.wjgnet.com/1948-0210/full/v17/i8/107639.htm>

DOI: <https://dx.doi.org/10.4252/wjsc.v17.i8.107639>

INTRODUCTION

Inflammatory bowel disease (IBD) is a group of recurrent, chronic, non-specific inflammatory diseases of the bowel, including Crohn's disease (CD) and ulcerative colitis (UC)[1,2]. An increasing number of patients are found not only in Western countries but also in newly industrialized regions such as Asia[3]. IBD is clinically characterized by diarrhea, mucous and bloody stools, abdominal pain. Many extraintestinal manifestations occur in patients with IBD commonly involve the musculoskeletal system, skin, hepatobiliary tract and eyes[4]. The pathogenesis of IBD is not fully understood and involves factors such as complex genetic, environmental, epithelial, microbial, and mucosal immunity[5,6]. The breakdown of the intestinal barrier, allowing microorganisms and other antigens to penetrate the bowel wall and trigger uncontrolled immune activation, is a hallmark of IBD[7-9].

In mammals, the intestine is covered by a single layer of epithelial cells that is renewed every 96-120 hours[10]. Intestinal stem cells (ISCs) are important adult stem cells mainly located in intestinal crypts, which continuously differentiate and regenerate themselves to achieve intestinal epithelial cell renewal[11,12]. Within the crypt, constantly dividing stem cells give rise to progenitor cells (or transit-amplifying cells), which rapidly proliferate before differentiating into mature intestinal epithelial cells. These cells then continue to divide, giving rise to the two differentiated lineages present in the villus: Secretory cells and absorptive cells[13,14]. The two intestinal epithelial lineages underpin the primary physiological functions of the gastrointestinal tract. The secretory lineage includes four distinct cell types - mucus-secreting goblet cells, hormone-producing enteroendocrine cells (EECs), antimicrobial peptide-releasing Paneth cells (PCs) and immune regulating-tuft cells - that primarily function in maintaining the integrity of the epithelium[12]. In contrast, the absorptive lineage consists of enterocytes, which are responsible for nutrient absorption and represent the most prevalent cell type in the intestine[15]. Tissue homeostasis is dependent on the ISC niche[12].

Approaches to managing IBD are shifting from simply controlling symptoms to aiming for mucosal healing, with the goal of preventing disease progression and avoiding bowel damage[16,17]. Currently approved drugs for IBD include corticosteroids, thiopurine, methotrexate biologics and tiny chemical compounds[18-20]. Although new biologics and small molecule drugs have demonstrated promising efficacy, they are not without potential side effects, such as immunosuppression, heightened infection risks, and possible cancer concerns[21]. Meanwhile, a significant number of patients do not respond to these biologics, underscoring the need for alternative approaches to achieve mucosal healing in IBD. For patients who are unresponsive to biologics, stem cell-based therapies may represent a promising new approach for restoring the epithelial barrier in IBD. In the past two decades, studies have demonstrated that the transplantation or transfusion of mesenchymal stem cells (MSCs) and hematopoietic stem cells (HSCs) can offer beneficial effects for IBD patients[22,23]. Meanwhile, advancements in ISC sorting technology and the refinement of culture systems have led to substantial progress in understanding the biological characteristics of ISCs. This has, in turn, facilitated the clinical translation of ISC-based therapies for gastrointestinal disorders. This review outlines the current research on the role of ISCs in IBD and investigates stem cell-based strategies for clinical application.

OVERVIEW OF ISCS

Types and marks of ISCs

Earlier discussions on ISC identity primarily centered around their physical location within the intestinal crypt. As early as 1974, it was suggested that the crypt base columnar cells (CBCs) might serve as the progenitor cells of the intestinal epithelium by Cheng and Leblond[24]. In a series of electron microscopy studies on small intestinal crypts, Cheng and Leblond[24] observed slender, immature, cycling cells situated between PCs at positions 1-4 of the crypt base with proliferation occurring roughly once every day. The absence of specific molecular markers to identify these cells has prevented enough definitive evidence to confirm that CBC cells are stem cells. In 2007, lineage-tracing experiments in adult mice were carried out using an inducible Cre knock-in allele and the Rosa26-lacZ reporter strain. Over a 60-day period,

leucine-rich repeat-containing G protein-coupled receptor 5 (Lgr5)-positive CBCs generated all epithelial lineages, providing evidence that they function as the stem cells of the small intestine and colon[25]. In 2009, through a lineage tracing approach, Sato *et al*[26] demonstrated that *ex vivo* cultured Lgr5+ CBCs are capable of generating all intestinal epithelial lineages. Therefore, LGR5+ CBC cells satisfy both key criteria of stemness: The capacity to generate multiple lineages and maintain long-term self-renewal. Additionally, lineage tracing studies revealed that certain Lgr5+ cells also express prominin-1 (CD133), and these CD133+ cells have the capacity to give rise to the entire intestinal epithelium[27]. In recent years, additional potential markers of CBCs have been identified including olfactomedin-4 (Olfm4)[28], achaete-scute homolog 2[29] and SRY-related high-mobility group box 9[30], in addition to Lgr5 and CD133.

In addition to CBCs, a unique population of quiescent “reserve” ISCs is found at the fourth position from the bottom of the crypt, just above the differentiated PCs. These cells, termed +4 cells, were first identified by Potten *et al*[31,32]. Due to the limitations of contemporary technology, the stemness of this population could not be easily established, prompting several research teams to focus on identifying specific genetic markers. Several studies have since proposed alternative ISC markers, which are primarily enriched in the +4 cell population. Sangiorgi and Capecchi[33] identified that B cell-specific Moloney murine leukemia virus insertion site 1 (Bmi1) is expressed in a specific population of cells located near the crypt base in the small intestine, primarily at the +4 position, four cells above the base. These cells proliferate, expand, renew, and ultimately give rise to all the differentiated cell lineages of the small intestinal epithelium. In 2011, Takeda *et al*[34] showed that homeodomain only protein (Hox), an atypical homeobox protein, serves as a specific marker for +4 cells. Hox-expressing cells give rise to CBCs and all mature intestinal epithelial lineages, while CBCs can also differentiate into +4 Hox-positive cells. These findings establish a bidirectional lineage relationship between active and quiescent stem cells within their niches. In addition to Bmi1 and Hox, other +4 cells markers have been identified in the last years, including telomerase reverse transcriptase[35] and leucine-rich repeats and immunoglobulin-like domains containing protein 1[36]. Subsequent comprehensive expression analyses, employing single-molecule fluorescent *in situ* hybridization, transcriptomics, and proteomics, revealed that although these markers are predominantly enriched in +4 cells, they are also likely expressed in other crypt cell populations, including CBCs[37-39]. The +4 stem cell is now regarded as a reserve stem cell with high resistance to radiation, capable of replenishing the pool of continuously cycling CBC cells when necessary[40]. The question of whether +4 cells and CBCs represent two distinct ISC populations, and whether this distinction is an intrinsic property or a consequence of their different locations within the ISC niche, remains a topic of ongoing debate[41].

Lgr5+ cells have been widely accepted as the model for the only homeostatic ISCs supporting intestinal epithelial regeneration. But recently, Malagola *et al*[42] found that stemness potential extends beyond the crypt base, residing in the isthmus region, where undifferentiated cells contribute to intestinal homeostasis (Figure 1). By using a kinetic reporter for time-resolved fate mapping and fibroblast growth factor binding protein 1 (Fgfbp1)-CreER¹² lineage tracing, Capdevila *et al*[43] demonstrate that Fgfbp1+ cells in upper crypt are multipotent and can give rise to Lgr5+ cells, supporting their role as ISCs. Moreover, Fgfbp1+ cells are capable of sustaining epithelial regeneration following the depletion of Lgr5+ cells. Intestinal epithelial regeneration originates from the upper crypt rather than the crypt base, challenging previous understanding.

ISC niche

ISCs are sustained by the surrounding niche cells, which play a crucial role in maintaining their proliferative potential and self-renewal capacity (Figure 1). At the base of the crypt, ISCs are encased by a heterogeneous population of stromal cells, including pericryptal myofibroblasts, fibroblasts, endothelial cells, neural cells, immune cells, pericytes, and smooth muscle cells. In concert with other niche components such as PCs and EECs, these stromal cells modulate the proliferative activity of ISCs, the differentiation of mature intestinal epithelial cells, and their overall survival[44]. And the colon possesses a crypt-based ISC niche similar to that of the small intestine but lacks PCs. PCs produce antimicrobial substances, such as α -defensins, lysozyme, and phospholipase A2, along with the Wnt activator protein Wnt3 and transforming growth factor- α (TGF- α), which are essential for safeguarding ISC proliferation[45,46]. EECs, primarily enterochromaffin cells, have the ability to dedifferentiate into fully functional ISCs through asymmetric cell division and may also serve as a reserve pool of ISCs[47]. Stromal cells also constitute an integral component of the niche. *In situ* hybridization studies have demonstrated that several Wnt ligands, including Wnt-2b, Wnt-4, Wnt-5a, and Wnt-5b, as well as R-spondins (RSPOs), are expressed within the stromal compartment to support the function of ISCs[48]. Twist2+ stromal cells have recently been identified as a niche subpopulation that supports canonical ISCs by secreting Wnt ligands[49]. Immune cells are mainly located in the lamina propria, directly beneath the crypts[50]. Recent advances in organoid culture and single-cell sequencing have shown that intestinal immune cells not only mediate immune responses through cytokine release, but also function as key components of the ISC niche, regulating stem cell fate to maintain epithelial homeostasis and drive regeneration during tissue repair[51].

Signaling pathways that regulate ISC niche functions

ISCs are regulated by multiple developmental signaling pathways, including Wnt, epidermal growth factor (EGF), Notch and bone morphogenetic protein (BMP), which are crucial for maintaining the balance between enterocyte proliferation, maturation, and migration, and play pivotal roles in governing the fate of ISCs (Figure 2). Below, we underscore the pivotal role of several key signaling pathways, coordinated between the epithelium and mesenchyme, in determining the identity and function of ISCs.

Wnt: The canonical Wnt/ β -catenin signaling pathway serves as a crucial regulator of ISC proliferation. Wnt ligands comprise a family of 19 secreted glycoproteins that exert their signaling effects by binding to Frizzled receptors and lipoprotein receptor-related protein 5/6 coreceptors. They transduce the signal either *via* β -catenin in the canonical

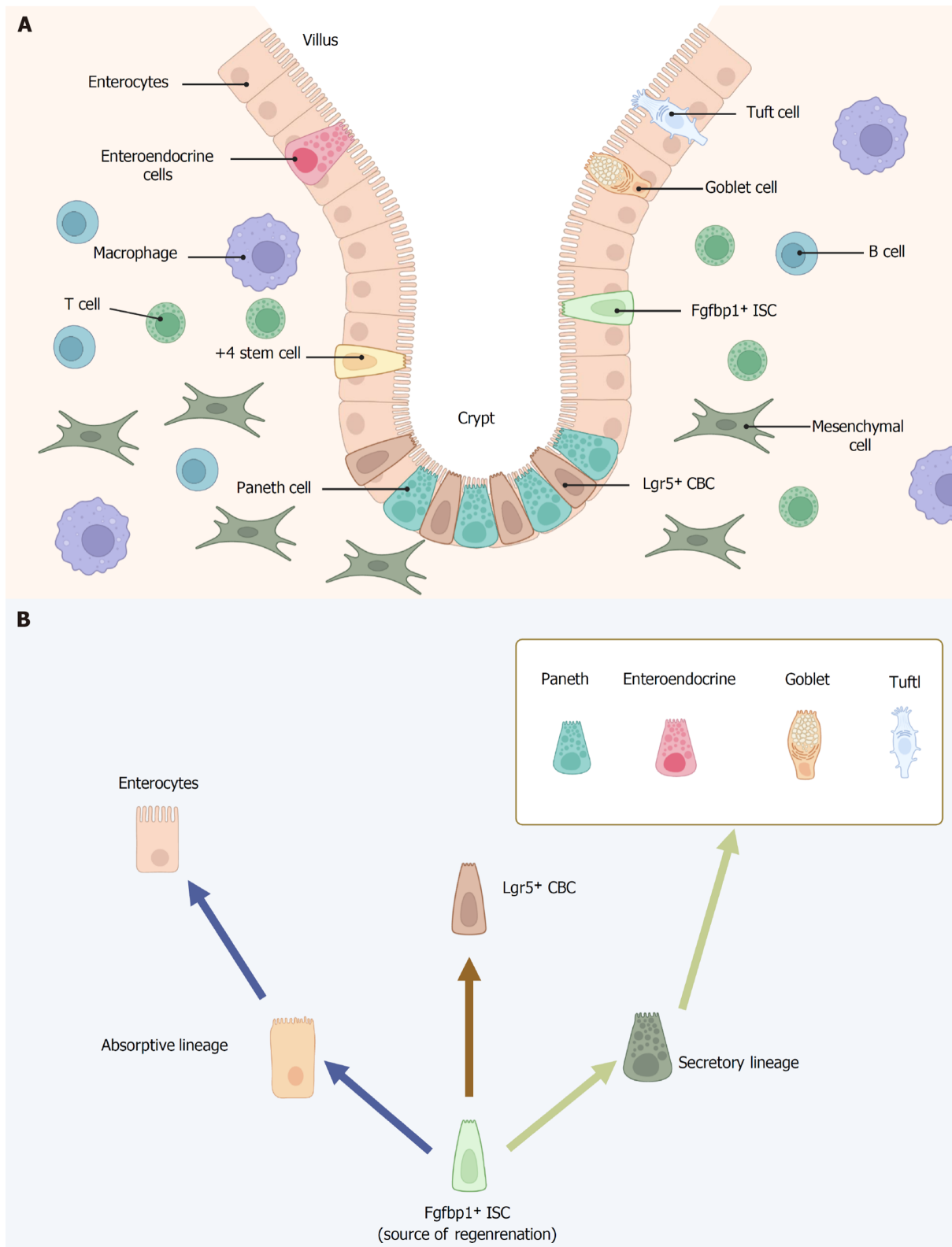


Figure 1 Intestinal stem cell niche and cell types in crypt-villus structures. A: The intestinal crypt-villus axis and neighboring niche cells; B: Fibroblast growth factor binding protein 1 positive intestinal stem cells regenerate all lineages and leucine-rich repeat-containing G protein-coupled receptor 5 positive cells. Fibroblast growth factor binding protein 1 secreted by upper crypt intestinal stem cells is essential for intestinal epithelial regeneration. Images created with BioRender.com ([Supplementary material](#)). ISCs: Intestinal stem cells; Fgfbp1: Fibroblast growth factor binding protein 1; Lgr5: Leucine-rich repeat-containing G protein-coupled receptor 5; CBC: Crypt based columnar cell.

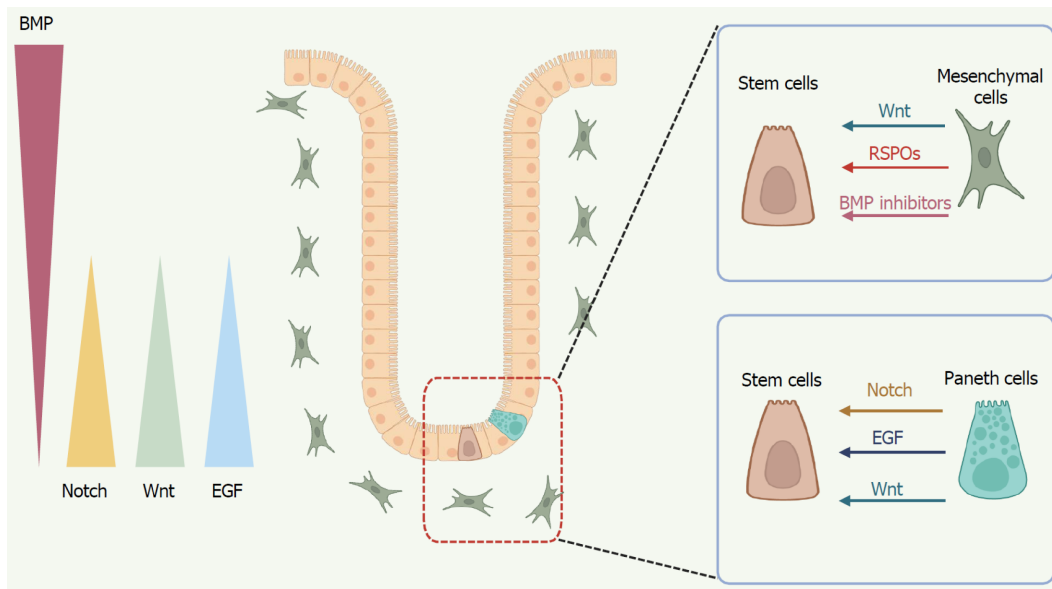


Figure 2 Key signaling pathways orchestrate stem cell fate regulation. At the crypt base, mesenchymal cells and Paneth cells secrete Wnt ligands and R-spondins to sustain the stemness and proliferation of intestinal stem cells (ISCs). Mesenchymal cells also produce bone morphogenetic protein inhibitors, promoting the self-renewal of ISCs. Epidermal growth factor, derived from Paneth cells, promotes ISC proliferation, survival, and long-term organoid growth. In addition to Wnt and epidermal growth factor, Paneth cells provide critical Notch signals to ISCs, with Notch signaling orchestrating the balance between absorptive and secretory lineage commitment. Images created with BioRender.com (Supplementary material). BMP: Bone morphogenetic protein; EGF: Epidermal growth factor; RSPOs: R-spondins.

pathway or through a series of other proteins in the non-canonical pathway. Extracellular Wnt signaling triggers multiple intracellular signaling cascades, including the Wnt/ β -catenin-dependent (canonical) pathway and the β -catenin-independent (non-canonical) pathway, the latter of which can be further subdivided into the planar cell polarity pathway and the Wnt/ Ca^{2+} signaling pathway[52].

A hallmark of the Wnt/ β -catenin canonical pathway is the accumulation and translocation of the adhesion-related protein β -catenin to the cell nucleus, where it binds to T-cell factor (TCF) family of transcription factors and directly regulates gene expression[53,54]. Systemic knockout of *Tcf4* leads to the complete depletion of ISCs, followed by the disruption of the epithelial structure in neonatal mice[55]. Moreover, the deletion of *Tcf7 L2* results in the loss of *Lgr5*⁺ ISCs, underscoring the essential role of this pathway in adult intestinal regeneration[56]. On the other hand, a finely tuned balance between Wnt agonists and antagonists within the ISC niche is crucial for preserving the integrity of the ISC compartment. Disruption of this balance, often caused by mutations in the tumor suppressor gene adenomatous polyposis coli results in uncontrolled activation of the Wnt signaling pathway[57]. Adenomatous polyposis coli-mutant ISCs act as bona fide supercompetitors by secreting Wnt antagonists, thereby promoting the differentiation of neighboring wild-type ISCs[58]. The epithelial Wnt ligand is secreted by PCs as Wnt3[45]. As ISCs begin to differentiate and exit the stem cell zone, the level of Wnt3 gradually diminishes. This generates a Wnt3 concentration gradient along the crypt-villus axis, thereby establishing a dynamic negative feedback loop[59]. In addition, the activation of the Wnt pathway relies on RSPOs, which are secreted by mesenchymal cells to enhance Wnt activity in the crypt[60]. RSPOs, a family of four secreted soluble proteins, bind to LGR family receptors, thereby enhancing the stability of Frizzled receptors[61,62]. RSPO2 and RSPO3 are essential for the maintenance of *LGR5*⁺ stem cells in the intestinal crypt, as neutralizing antibodies against both RSPOs are sufficient to cause the depletion of these cells[63]. Furthermore, the growth and maintenance of ISCs depend on lymphatic endothelial cells and RSPO3+GREM1⁺ epithelial cells. In the ISC niche, these two cell types are in close proximity and exert their function through the secretion of RSPO3[64].

EGF: In organoid culture models, EGF, a key component secreted by PCs and essential for establishing *ex vivo* cultures, regulates organoid growth and differentiation toward the EEC lineage, and is a crucial part of the intestinal organoid culture medium[45,65]. Inhibiting EGF signaling in intestinal organoids causes proliferative *LGR5*⁺ ISCs to enter quiescence and halts organoid growth[65]. Additionally, the interleukin (IL)-33/suppression of tumorigenicity 2 axis, an immunomodulatory pathway that is clinically monitored as a biomarker for intestinal injury, controls intrinsic epithelial regeneration by stimulating the production of EGF[66]. In *Drosophila* ISCs, EGF signaling activates ISCs by enhancing mitochondrial biogenesis and β -oxidation[67]. It is important to highlight that neuregulin 1 (NRG1), a key ligand of the EGF family, plays a pivotal role in tissue repair following injury. In contrast to EGF, NRG1 is upregulated in response to damage and is expressed in mesenchymal stromal cells, macrophages, and PCs. The absence of NRG1 impairs proliferation in intestinal crypts and diminishes regenerative potential[68]. These results highlight the important roles of EGF ligands in ISC regulation.

Notch: The Notch signaling pathway is one of the most important pathways in determining cell fate. The canonical Notch signaling is initiated through the interaction between Notch ligands on neighboring cells and the Notch receptor,

resulting in a series of proteolytic cleavages. This releases the Notch intracellular domain into the cytoplasm, from where it translocates to the nucleus. There, Notch intracellular domain binds to the DNA-binding transcription factor cellulose synthase-like, forming a complex that activates the transcription of downstream genes[69]. Notch receptor and ligand mRNAs have been identified in both epithelial and mesenchymal cells[70]. Notch signaling regulates the differentiation of CBCs into either absorptive or secretory cells. Activation of Notch promotes differentiation towards absorptive cells, whereas inhibition of Notch favors differentiation into secretory cells. Notch signaling is essential for maintaining the ISC pool, and its inhibition results in a reduction of Lgr5+ cell numbers and impaired proliferation[70]. Expression of Notch target genes in intestinal crypts, with hairy and enhancer of split 1 (Hes1) and Olfm4 Localized to CBC cells[71,72]. PCs, located adjacent to CBC stem cells at the crypt base, express the Notch ligand delta-like ligand 4 (DLL4). The expression of genes known to support ISC function (Dll4, Wnt3, EGF) in PCs suggests that these cells may act as niche cells for ISCs [73]. Deletion of either the Notch ligands (Dll1 and Dll4) or the Notch effectors (Hes1, Hes3, and Hes5) leads to the loss of crypt proliferation[72,74]. Atonal homolog 1 (Atoh1) is a key transcriptional activator that fully drives the differentiation of secretory cells. Inactivation of Notch in progenitor cells leads to the upregulation of Atoh1 expression, driving differentiation towards the secretory lineage[75]. And intestinal epithelial *Atoh1* knockout results in the loss of the entire secretory lineage without affecting absorptive cell differentiation[76]. Furthermore, a recent study demonstrates that mitochondrial dynamics, governed by FOXO and Notch signaling, are essential in driving stem cell differentiation into secretory cell types, including goblet cells and PCs[77].

BMP: BMPs are members of the TGF- β superfamily. In mammals, over 12 BMP-related proteins have been identified, including BMP2, BMPs4-10, osteogenin-1, and growth differentiation factors 5-7, among others[78]. The BMP signaling pathway serves to antagonize the proliferative signals within the ISC niche, thereby inhibiting stem cell self-renewal and driving cellular differentiation. Inhibition of BMP signaling impairs the terminal differentiation of the secretory lineage, resulting in dysregulated goblet cell maturation within the intestinal epithelium[79]. In addition, different mesenchymal cell populations generate a crucial intestinal BMP signaling gradient. Platelet-derived growth factor alpha (high) telocytes, abundant at the villus base, serve as a BMP reservoir, while a CD81+ platelet-derived growth factor alpha (low) population located just beneath the crypts secretes the BMP antagonist Gremlin1[80]. These cells can expand ISCs *in vitro* without additional nutritional support and contribute to ISC maintenance *in vivo*[80]. Dysfunction of BMP signaling in stromal cells leads to excessive proliferation of mesenchymal cells and the excessive secretion of interleukins, which further promote abnormal goblet cell differentiation and excessive synthesis and accumulation of mucus, resulting in structural and functional abnormalities in the intestinal epithelial cells[81]. Kraiczky *et al*[82] conducted a classification analysis of subcryptal mesenchymal cells in the small intestine and were the first to demonstrate that the BMP signaling gradient within the intestinal crypt architecture governs the self-organization of the Wnt-secreting stem cell niche.

Other regulators of ISCs

Signaling-mediated transcription regulation is key to ISC identity and fate, but growing evidence shows it works in tandem with immune cells, nutrition, and microbiome. ISC fate is regulated by cytokines, dietary factors, and microbial signals, which converge on core pathways that integrate niche signals.

Immune cells: IBD primarily results from dysregulation of the intestinal immune system. The intestinal epithelial barrier hosts a range of innate and adaptive immune cells, forming a key component of the gut mucosal immune system. Immune cells interact with ISCs both directly and through paracrine signaling. Pro-inflammatory cytokines such as interferon (IFN)- γ and IL-17 trigger Janus kinase/signal transducer and activator of the transcription 1 (STAT1) activation, leading to ISC apoptosis and impaired renewal. In contrast, regulatory T cells and IL-10 maintain ISCs viability *via* anti-apoptotic signaling[83]. Biton *et al*[51] used single-cell RNA sequencing to identify ISC subsets with high major histocompatibility complex II expression capable of interacting with CD4+ helper T cells and presenting antigens. Organoid studies showed that pro-inflammatory T helper type 1 (Th1), Th2, and Th17 cytokines (IFN- γ , IL-13, IL-17) drive Lgr5+ ISC differentiation, while regulatory T cells and IL-10 promote their self-renewal[51]. *In vitro* co-culture of intestinal organoids with activated T cells results in ISC depletion and compromised organoid viability. Furthermore, in the absence of PCs, IFN- γ derived from CD4+ T cells directly trigger ISC apoptosis *via* the Janus kinase/STAT signaling pathway[84]. Recent studies have revealed a novel mechanism whereby integrin $\alpha\text{E}\beta\text{7}$ on intestinal T cells engages E-cadherin on ISCs, modulating downstream adhesion signaling to control epithelial proliferation and differentiation, thereby sustaining intestinal homeostasis[85]. Innate lymphoid cells (ILCs) produce various cytokines even under steady-state conditions, many of which directly influence epithelial cell function - most notably IL-22. ILC3s, as a key source of IL-22, support ISC maintenance and differentiation while providing protection against DNA damage[86]. Meanwhile, under IL-22-independent injury conditions, ILC3s drive intestinal repair by activating the transcriptional regulator YAP in transit-amplifying cells, leading to intestinal mucosal repair[87]. ILC2s and ILC1s also exert significant regulatory effects on ISCs. For example, ILC2-derived IL-13 activates IL-13R α1 signaling in crypt ISCs, inducing Foxp1 expression to facilitate β -catenin nuclear translocation and sustain Lgr5+ ISC maintenance[88]. Using gut organoid-ILC1 cocultures, Jowett *et al*[89] showed that murine and human ILC1 secrete TGF- β1 to promote CD44v6+ crypt expansion and express matrix metalloprotease 9 to drive extracellular matrix (ECM) remodeling. In addition to T cells and ILCs, coculture of gut organoids with macrophages and dendritic cells highlights their critical roles in maintaining ISCs homeostasis. In summary, the intricate regulatory interactions between immune cells and ISCs play a pivotal role in maintaining the intestinal barrier and overall gut homeostasis.

Nutrition: ISCs play an underappreciated but emerging role as sensors of dietary nutrients, adjusting their fate decisions in response to nutritional status to help maintain gut homeostasis[90]. Distinct nutritional intervention - such as caloric

restriction, fat, and glucose - modulate ISC function and collectively regulate intestinal homeostasis. Caloric restriction amplifies the numbers and proliferation rates of Lgr5+ ISCs by suppressing mammalian target of rapamycin (mTORC) signaling in PCs, key components of the ISC niche, an effect that can be recapitulated by rapamycin[91,92]. Interestingly, refeeding after fasting enhances ISC-associated tumor formation through the mTORC1-polyamine-protein synthesis axis [93]. Mattila *et al*[94] found that mTORC1 activation increases ISCs size in a region-specific manner, favoring the absorptive enteroblast lineage and inhibiting secretory EEC differentiation. Conversely, high-fat diet (60% fat) has been shown to enhance the proliferation and function of Lgr5+ ISCs and progenitor cells in the mammalian intestine[95]. Mechanistically, high-fat diet activates peroxisome proliferator-activated receptor delta, a ligand-dependent transcription factor that regulates metabolism and promotes self-renewal in ISCs and niche-associated progenitors. Short-term excess sucrose intake directly alters crypt cell metabolism and suppresses regenerative proliferation of ISCs and transit-amplifying cells[96].

Microbiome: The maintenance of intestinal homeostasis depends on the coordinated interaction between ISCs and the gut microbiota. Recent studies have revealed a complex interplay between ISCs and the gut microbiota, with microbial communities and their metabolites regulating ISCs function through multiple mechanisms. Gut microbiota species, such as *Lactobacillus* and *Bifidobacterium*, modulate ISC self-renewal and differentiation to support intestinal homeostasis and host defense against bacterial infection[97]. Salmonella infection in intestinal organoids leads to a marked reduction in Lgr5 and Bmi1 expression, key markers of ISCs. In contrast, *Limosilactobacillus reuteri* preserves Lgr5+ cell populations and promotes epithelial proliferation through RSPO activation[98]. Meanwhile, recent studies further emphasize that gut microbial metabolites - including short-chain fatty acids, lactate, succinate, indoles and their derivatives, and bile acids - can directly or indirectly influence ISC fate[99]. Furthermore, ISC self-renewal is regulated by gut microbiota and enteric serotonergic neurons. Microbiota-derived valeric acid enhances tryptophan hydroxylase 2 expression by inhibiting nucleosome remodeling and deacetylase complex recruitment, leading to 5-hydroxytryptamine-mediated activation of prostaglandin E2 positive macrophages *via* 5-hydroxytryptamine (serotonin) receptor 2A/3A. Prostaglandin E2 then promotes Wnt/ β -catenin signaling in ISCs through prostaglandin E2 receptor 1/4 receptors[100]. This study reveals complex interactions among the microbiota and their metabolites, enteric neurons, intestinal immune cells, and ISCs, uncovering a new layer of ISC regulation by niche cells and microbial signals.

ISC-BASED MECHANISMS IN IBD PATHOGENESIS

Inflammatory microenvironment in IBD

The inflammatory microenvironment in IBD plays a crucial role in the pathogenesis of both CD and UC, the two main types of IBD. This microenvironment is characterized by chronic inflammation, immune dysregulation, and interactions between immune cells, cytokines, and intestinal epithelial cells. First, In IBD, the persistent inflammation damages the intestinal epithelium, disrupts mucosal integrity, and drives disease progression[6]. The inflammatory environment directly harms intestinal epithelial cells, crucial for gut barrier formation. This damage results in ulcerations, crypt abscesses, and loss of the epithelial lining, intensifying the immune response and worsening gut inflammation. Secondly, IBD is marked by an aberrant immune response to normal gut flora, triggering immune activation against commensal bacteria. This dysregulation involves both innate and adaptive immune cells. Intestinal innate immunity is mediated by neutrophils, monocytes, macrophages, dendritic cells, ILCs, and natural killer cells, which are characterized by their ability to mount a rapid, nonspecific response as the first line of defense[101]. Compared to innate immune cells, adaptive immune cells exhibit high specificity and immunological memory, complementing each other to eliminate invading pathogens. In CD, Th1 and Th17 cells drive inflammation by secreting pro-inflammatory cytokines such as tumor necrosis factor (TNF)- α , IL-6, IL-17, IFN- γ , which recruit immune cells and worsen tissue damage[102]. Whereas Th2 cells predominantly drive the inflammatory response in UC, secreting IL-4, IL-5, and IL-13, which contribute to tissue damage and mucus production[102]. In addition, dysbiosis or imbalance in the gut microbiota results in reduced microbial diversity and an overgrowth of pro-inflammatory bacteria[6]. In the IBD inflammatory microenvironment, immune cell-derived cytokines damage intestinal epithelial cells, compromising the epithelial barrier and allowing pathogens and luminal antigens to worsen inflammation. Furthermore, chronic inflammation in IBD activates fibroblasts and promotes the deposition of ECM proteins, such as collagen. This leads to intestinal fibrosis, which can cause strictures and impair the function of the affected region[103].

Epithelial barrier dysfunction

Epithelial barrier dysfunction and crypt destruction are hallmarks of IBD. The homeostatic repair and regeneration of the intestinal epithelium are controlled by ISCs located at the base of the crypts, which promote rapid turnover and generate various epithelial cell types. They differentiate into various cell types, including enterocytes (absorptive cells), goblet cells (mucus-secreting cells), and PCs (which support stem cell function and secrete antimicrobial peptides). The remaining stem cells following intestinal mucosal injury rapidly divide, replenish the stem cell population, proliferate, differentiate into mature intestinal epithelial cells, and repair the damaged mucosa.

In IBD, chronic inflammation impairs ISC function, resulting in compromised epithelial regeneration. Dysfunctional ISC activity results in decreased expression of epithelial tight junction proteins, which increases intestinal permeability and facilitates the translocation of harmful substances into the underlying tissue, thereby triggering an immune response [104]. In addition, Wnt and Notch signaling pathways are the most influential in regulating ISC function, especially in

IBD. Studies have shown that in IBD patients, especially those with UC, increased Notch signaling and Wnt suppression lead to PC depletion, impairing the mucus barrier and ultimately compromising the intestinal barrier integrity[105,106]. Interesting, the intestinal epithelium's response to inflammation involves not only stem and progenitor cells but also fully differentiated, post-mitotic PCs. Inflammation-induced stem cell factor secretion activates c-Kit signaling, triggering a cascade that leads to glycogen synthase kinase 3 β inhibition and Wnt activation in PCs[106]. Multiple studies have shown that inhibiting Notch signaling and promoting goblet cell differentiation can repair the mucosal barrier and alleviate colitis[107-109]. In recent years, growing evidence has highlighted the essential role of ISCs in maintaining epithelial barrier function. Such as DEAH-box helicase 9 deficiency in ISCs or PCs leads to R-loop accumulation, genomic instability, and cGAS-STING-mediated inflammation, compromising epithelial homeostasis[110]. Defects in the ISC niche lead to dysfunctional 3D organoid formation in mouse models of CD-like ileitis[111]. Conditional knockout of the sorting nexin 10 gene in intestinal epithelial cells or ISCs enhances intestinal mucosal repair in mouse colitis models, while also restoring ISC stemness[112].

Senescence and apoptosis of ISCs

The senescence and apoptosis of ISCs are pivotal mechanisms underlying the disruption of the intestinal epithelial barrier and disease progression in IBD. These processes compromise the gut's regenerative capacity and self-repair ability, while further perpetuating chronic inflammation. In senescence elevates the risk of IBD and colon cancer. The persistent lesions in the same intestinal region in CD may result from aged stem cells' inability to proliferate and generate new intestinal cells[113]. Mechanically, mTORC1 activation increases mitogen-activated protein kinases 6 protein synthesis and enhances the activation of the p38 mitogen-activated protein kinases-p53 pathway, leading to a reduction in the number and activity of ISCs, as well as a decrease in villus size and density[114]. Furthermore, the gut microbiota can also influence the senescence of ISCs. Heat-inactivated *Bifidobacterium adolescentis* may improve colon senescence by enhancing the regeneration of ISCs both *in vivo* and *in vitro*, via the Wnt/ β -catenin signaling pathway[115]. Meanwhile, exposure of colonic epithelial organoids to dextran sulfate sodium, oxazolone, or 2,4,6-trinitrobenzenesulfonic acid directly induced increased apoptosis and a depletion of Lgr5+ cells[116]. Depletion of fucosyltransferase 2 in ISCs exacerbates endoplasmic reticulum stress and apoptosis, whereas fucosylated hypoxia up-regulated 1 enhances stem cell resistance to pro-apoptotic inositol-requiring enzyme 1 signaling[117]. Additionally, selective deletion of the methyltransferase 14 gene in the mouse colon led to apoptosis of colonic stem cells, resulting in mucosal barrier disruption and severe colitis[118].

Fibrosis

Intestinal fibrosis is a significant complication of IBD, occurring in both UC and CD, although it is more commonly seen in CD[119]. As fibrosis progresses, specific areas of the intestine become narrowed, leading to substantial damage to its structure and function, which significantly impairs patients' quality of life. Intestinal fibrosis is characterized by the excessive deposition of ECM components by activated cells derived from the mesenchyme in ISC niche. As an important regulatory component of the ISC niche, myofibroblasts play a key role in intestinal fibrosis. Following prolonged exposure to inflammatory stimuli, resident myofibroblasts undergo activation, a process governed by gradients of autocrine and paracrine soluble factors, including platelet-derived growth factor subunit A, platelet-derived growth factor subunit B, TGF β 1, insulin-like growth factor 1, and EGF, which are secreted by both immune and non-immune cells[120]. Nevertheless, myofibroblasts and mesenchymal cells are not the sole cell types implicated in intestinal fibrosis. Interestingly, non-mesenchymal cells, including endothelial and epithelial cells that have undergone endothelial-to-mesenchymal or epithelial-to-mesenchymal transitions, also play a role in ECM deposition during the fibrotic process [121,122]. In contrast to myofibroblasts, significant damage to and a decrease in the number of telocytes have been observed during fibrotic remodeling in IBD[123,124]. It is worth noting that LGR5+ ISC cells are markedly decreased in the fibrotic, stiffened gut[106,125]. However, He *et al*[126] noted that stiffening causes OLFM4 to extend into the villus regions in both the *in vitro* model and the rigid human IBD colon. It provided evidence for the hypothesis that fibrosis-driven gut stiffening directly contributes to epithelial remodeling in IBD.

ISC: EMERGING KEY PLAYERS IN STEM CELL BASED IBD THERAPY

Mucosal healing in inflamed tissues could represent a promising target for improving clinical outcomes, reducing disease recurrence, and enhancing resection-free survival in patients with IBD[16,17]. Several existing treatments may exert protective or regenerative effects on the damaged epithelium, thereby facilitating mucosal healing. TNF- α inhibitors (biological agents) have induced mucosal healing in a subset of IBD patients, representing a substantial advancement in IBD therapy[127]. A significant number of patients do not respond to these biologic agents, highlighting the need for alternative therapies in IBD. As basic biological research and clinical trials advance, stem cell therapy is expected to expand the therapeutic options for IBD (Table 1).

Currently, clinical research on IBD primarily involves the use of HSCs or MSCs. HSCs can be extracted from peripheral blood, bone marrow, and umbilical cord blood, migrating directly to damaged tissues or differentiating into epithelial and immunomodulatory cells to restore normal mucosal structures[128]. In 2010, Burt *et al*[129] investigated the impact of autologous HSC transplantation (HSCT) on disease-free survival in patients with severe anti-TNF α refractory CD. Following treatment, all patients achieved a Crohn's Disease Activity Index of less than 150. The proportion of CD patients remaining relapse-free after transplantation was 91% at 1 year, 63% at 2 years, 57% at 3 years, 39% at 4 years, and 19% at 5 years. Although HSCT still holds clinical research value, studies on autologous HSCT in patients with refractory CD have indicated that while the procedure cannot address the high relapse rates associated with genetic susceptibility, it

Table 1 Comparison of hematopoietic stem cells, mesenchymal stem cells, and organoids for the treatment of inflammatory bowel disease

Characteristic	HSCT	MSCT	Organoid therapy
Main source	Bone marrow, peripheral blood, cord blood	Bone marrow, adipose tissue, muscle connective tissue, periosteum, perichondrium	Adult stem cells (<i>e.g.</i> , intestinal stem cells)
Primary mechanism	Reconstitution of the immune system, suppress abnormal immune responses	Anti-inflammatory, immunomodulatory, tissue repair	Replace damaged epithelium, reconstruct intestinal barrier
Clinical stage	Numerous clinical trials; used in refractory severe IBD cases	Active clinical trials; some products commercially available	Mostly in preclinical and early-stage research
Indications	Severe IBD unresponsive to conventional therapy	Moderate-to-severe IBD, especially perianal fistulizing Crohn's disease	Severe epithelial damage
Adverse effects	Infections, high treatment risk	Rare; mild fever or local reactions occasionally reported	Safety still under investigation

HSCT: Hematopoietic stem cell transplantation; MSCT: Mesenchymal stem cell transplantation; IBD: Inflammatory bowel disease.

is also linked to a considerable frequency of serious adverse events[130-133]. As a result, the safety of HSCT in the treatment of IBD remains a critical concern. Compared to HSCT, autologous and allogeneic MSCs have a broader application in IBD patients. MSCs can be harvested from various human tissues, including bone marrow, adipose tissue, muscle connective tissue, periosteum, and perichondrium[134]. MSCs regulate immune responses and control inflammation by secreting various soluble factors, such as cytokines, chemokines, and growth factors. These factors induce cell cycle arrest and apoptosis in lymphocytes, thereby promoting tissue regeneration[135]. Multiple clinical trials have demonstrated the safety and efficacy of both allogeneic and autologous bone marrow-derived MSCs in the treatment of CD, particularly perianal fistulas[136-140]. Furthermore, exosomes secreted by MSCs (MSCs-Exo) have also been explored for the treatment of IBD. In IBD mouse models induced by dextran sulfate sodium and 2,4,6-trinitrobenzenesulfonic acid, intraperitoneal administration of MSCs-Exo extracted from human umbilical cord MSC culture supernatant can restore mucosal barrier repair and maintain intestinal immune homeostasis in the mice[141]. Treatment with MSC-Exos reduced inflammatory responses, preserved intestinal barrier integrity, and promoted the polarization of M2b macrophages, without contributing to intestinal fibrosis[142].

In 2009, Sato *et al*[26] cultivated the first intestinal organoid using adult stem cells derived from mouse intestines, marking the beginning of the organoid research era. This study has demonstrated that Lgr5+ stem cells are both necessary and sufficient for the initiation and sustained growth of crypt-villus organoids[26]. Currently, there are two main approaches to establishing intestinal organoids: One involves isolating intestinal crypts directly from the donor for culture, while the other relies on *in vitro* differentiation of embryonic stem cells or induced pluripotent stem cells (iPSCs)[143]. Yui *et al*[144] showed that mouse colonic epithelial cells can be cultured as spherical aggregates in a 3D culture system, where they are embedded in a type I collagen gel, in the presence of specific cytokines. Furthermore, these spheres can be transplanted into sites of colonic epithelial damage in a UC model mouse. This study provides the first evidence that *ex vivo* cultured ISC can be transplanted *in situ*, facilitating the regeneration of damaged mucosal tissue. Further studies revealed that organoids derived from fetal or adult small intestine can engraft onto damaged colonic epithelium, with differences in their adaptability to the surrounding environment due to cell plasticity[145]. Human intestinal organoids can also reconstruct the damaged mucosa in immunodeficient mice[146]. Although the progenitor cells within organoids are sufficient to drive proliferation and differentiation, their limited plasticity and stemness ultimately constrain the diversity of cell types within the organoids. Recently, Yang *et al*[147] utilize a combination of small molecule pathway modulators to boost the stemness of organoid stem cells, thereby enhancing their differentiation capacity and increasing cellular diversity within human intestinal organoids. On the other hand, although stem cell-derived organoids are powerful models for epithelial function, they lack tissue-resident immune cells, which are crucial for capturing organ-level processes. Nikolche and his team successfully developed human intestinal immune organoids that incorporate autologous tissue-resident memory T cells, thereby modeling the interactions between intestinal epithelial cells and immune cells. Tissue-resident memory T cells actively infiltrate the organoids and integrate into the epithelial barrier, forming intestinal immune organoids that effectively recapitulate the immune microenvironment of the intestinal tissue *in vitro*[148].

Building on these previous studies, intestinal organoids can now be considered as one of the potential sources for repairing ulcers in patients with refractory IBD. We propose collecting ISCs from the patient's lesions *via* endoscopic biopsy, followed by *ex vivo* expansion using established organoid culture techniques. Once the required cell quantity is reached, they can be transplanted to the target site using an endoscopic delivery approach (Figure 3). However, many challenges remain in establishing organoid transplantation, including the development of an endoscopic cell delivery system, the quality of cultured ISCs, the identification of optimal indices to evaluate the clinical efficacy, and the tumorigenicity of donor organoids, among others[149]. Therefore, intestinal organoid transplantation for the treatment of IBD requires extensive clinical trials in the future for evaluation.

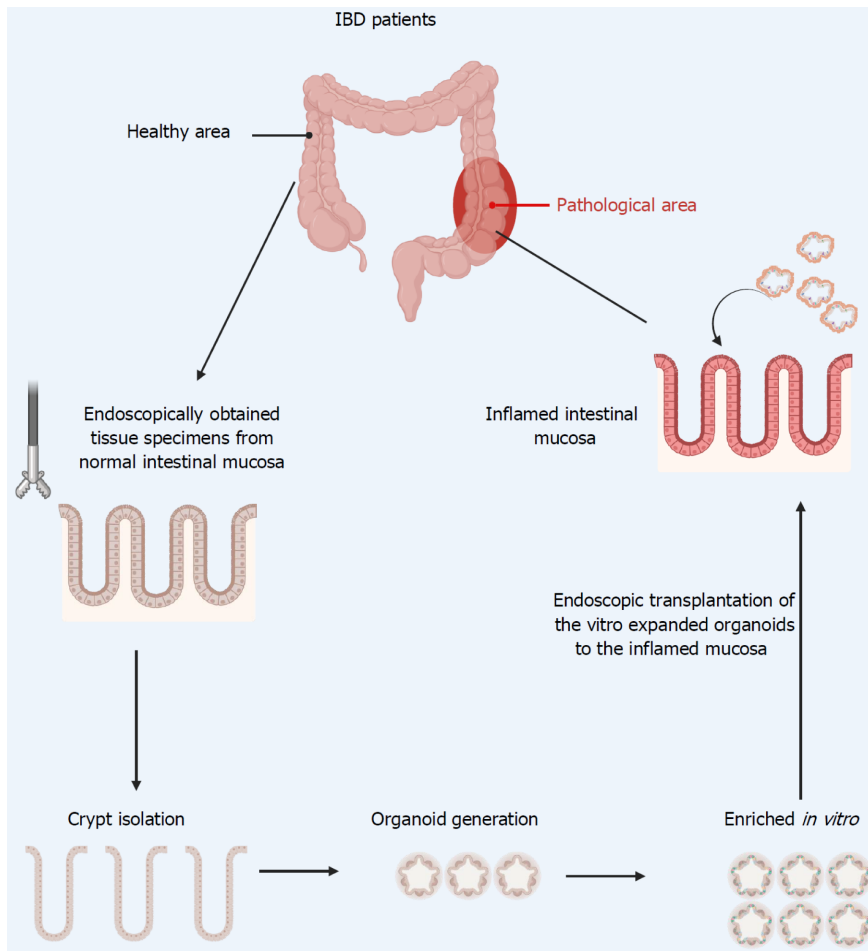


Figure 3 Endoscopic intestinal stem cell transplantation: Therapeutic potential in inflammatory bowel disease. Images created with BioRender.com (Supplementary material). IBD: Inflammatory bowel disease.

FUTURE PERSPECTIVES

Meanwhile, advances in gene editing, stem cell engineering, and artificial intelligence (AI) are reshaping ISC research, creating new avenues for disease modeling and therapeutic innovation through their interdisciplinary integration. For instance, the combination of human iPSC and CRISPR-Cas9 technology offers a versatile and powerful platform for gene editing, enabling the investigation of disease mechanisms and the discovery of therapeutic targets. Using a lentiviral vector expressing single-guide RNA and CRISPR-Cas9, Sens *et al*[150] generated iPSC lines with targeted knockouts of IL-10RA, IL-10RB, and the downstream signaling molecules STAT1 and STAT3. In parallel, AI is emerging as a powerful tool in the diagnosis, monitoring, and management of IBD. Deep learning algorithms applied to endoscopic images and histopathological slides have demonstrated excellent performance in lesion detection, disease classification, and treatment response prediction[151,152]. Therefore, we propose that integrating AI with ISC-based therapies can further enhance clinical outcomes by enabling dynamic monitoring of epithelial regeneration and early relapse detection. Additionally, AI has the potential to accelerate research by analyzing complex data from ISC-derived organoids, revealing novel phenotypes and identifying therapeutic targets with greater speed and accuracy than traditional methods.

CONCLUSION

Initial studies suggested CBCs as progenitors of the intestinal epithelium, and subsequent lineage-tracing confirmed Lgr5+ CBCs as ISCs capable of self-renewal and multilineage differentiation. Additional markers, including CD133, Olfm4, achaete-scute homolog 2, and SRY-related high-mobility group box 9, have refined CBC identification. Quiescent +4 cells, located above PCs, serve as reserve ISCs with high radiation resistance, replenishing CBCs when needed. Markers like Bmi1, Hopx, telomerase reverse transcriptase, and leucine-rich repeats and immunoglobulin-like domains containing protein 1 are associated with +4 cells. Recent studies challenge the exclusive role of Lgr5+ CBCs in regeneration, highlighting Fgfbp1+ cells in the upper crypt as multipotent progenitors that contribute to ISC renewal, thus broadening the concept of ISC plasticity and regenerative capacity. ISCs are regulated by a complex niche comprising stromal and epithelial cells, such as PCs, fibroblasts, and immune cells, which govern ISC proliferation, differentiation,

and survival. Key signaling pathways, including Wnt/ β -catenin, EGF, Notch, and BMP, coordinate ISC function and fate. Wnt/ β -catenin signaling drives ISC proliferation, while EGF and Notch pathways regulate differentiation. BMP signaling inhibits proliferation and promotes differentiation. Additionally, immune cells, nutrition, and microbiota modulate ISC activity. Impaired function of ISCs hampers epithelial repair, undermining the gut barrier and enhancing permeability. Dysregulation of Wnt and Notch signaling pathways exacerbates ISC dysfunction. Additionally, ISC senescence and apoptosis further diminish regenerative potential. Intestinal fibrosis arises from the activation of myofibroblasts and excessive ECM deposition, resulting in intestinal stiffness and further impairment of ISC activity, which disrupts epithelial homeostasis.

The treatment of IBD has predominantly focused on immunosuppression. Many of these medications, especially steroids and immunomodulators, exert widespread immunosuppressive effects, which can result in an increased risk of infections and neoplastic complications. Stem cell-based therapies are emerging as promising treatments for IBD. HSCs and MSCs are the primary candidates, with HSCT showing potential but also high relapse rates and safety concerns. MSCs, through cytokine secretion and exosome-based mechanisms, promote tissue regeneration and modulate inflammation, demonstrating efficacy in IBD treatment. Additionally, intestinal organoids, derived from Lgr5⁺ stem cells, offer significant potential for mucosal repair. Recent innovations in organoid culture, including enhanced stemness and immune cell integration, bolster their therapeutic potential for refractory IBD. Despite these advances, challenges remain in optimizing cell delivery systems, evaluating clinical efficacy, and addressing tumorigenicity. Extensive clinical trials are necessary to fully assess the viability of organoid-based therapies for IBD. We suppose that ISC transplantation into the inflamed mucosa through endoscopic delivery approach will provide a new therapeutic approach to reconstruct the epithelial barrier in IBD.

FOOTNOTES

Author contributions: Zhang MJ and Chan SX drafted the initial manuscript and contributed equally to this manuscript as co-first authors; Jia ZG and Lv C contributed to the figure and table artwork and illustrations; Chen JJ and Hong SC conceptualized and designed the review and contributed equally to this manuscript as co-corresponding authors. All authors critically reviewed the manuscript for important intellectual content, approved the final manuscript as submitted, and agreed to be accountable for work.

Conflict-of-interest statement: All the authors report no relevant conflicts of interest for this article.

Open Access: This article is an open-access article that was selected by an in-house editor and fully peer-reviewed by external reviewers. It is distributed in accordance with the Creative Commons Attribution NonCommercial (CC BY-NC 4.0) license, which permits others to distribute, remix, adapt, build upon this work non-commercially, and license their derivative works on different terms, provided the original work is properly cited and the use is non-commercial. See: <https://creativecommons.org/licenses/by-nc/4.0/>

Country of origin: China

ORCID number: Shao-Cheng Hong 0000-0003-1258-2223.

S-Editor: Wang JJ

L-Editor: A

P-Editor: Zhang YL

REFERENCES

- 1 Le Berre C, Honap S, Peyrin-Biroulet L. Ulcerative colitis. *Lancet* 2023; **402**: 571-584 [RCA] [PMID: 37573077 DOI: 10.1016/S0140-6736(23)00966-2] [FullText]
- 2 Dolinger M, Torres J, Vermeire S. Crohn's disease. *Lancet* 2024; **403**: 1177-1191 [RCA] [PMID: 38437854 DOI: 10.1016/S0140-6736(23)02586-2] [FullText]
- 3 Aniwani S, Santiago P, Loftus EV Jr, Park SH. The epidemiology of inflammatory bowel disease in Asia and Asian immigrants to Western countries. *United European Gastroenterol J* 2022; **10**: 1063-1076 [RCA] [PMID: 36479863 DOI: 10.1002/ueg2.12350] [FullText] [Full Text (PDF)]
- 4 Rogler G, Singh A, Kavanaugh A, Rubin DT. Extraintestinal Manifestations of Inflammatory Bowel Disease: Current Concepts, Treatment, and Implications for Disease Management. *Gastroenterology* 2021; **161**: 1118-1132 [RCA] [PMID: 34358489 DOI: 10.1053/j.gastro.2021.07.042] [FullText]
- 5 Chang JT. Pathophysiology of Inflammatory Bowel Diseases. *N Engl J Med* 2020; **383**: 2652-2664 [RCA] [PMID: 33382932 DOI: 10.1056/NEJMra2002697] [FullText]
- 6 Gilliland A, Chan JJ, De Wolfe TJ, Yang H, Vallance BA. Pathobionts in Inflammatory Bowel Disease: Origins, Underlying Mechanisms, and Implications for Clinical Care. *Gastroenterology* 2024; **166**: 44-58 [RCA] [PMID: 37734419 DOI: 10.1053/j.gastro.2023.09.019] [FullText]
- 7 Neurath MF, Travis SP. Mucosal healing in inflammatory bowel diseases: a systematic review. *Gut* 2012; **61**: 1619-1635 [RCA] [PMID: 22842618 DOI: 10.1136/gutjnl-2012-302830] [FullText]
- 8 Parikh K, Antanaviciute A, Fawcner-Corbett D, Jagielowicz M, Aulicino A, Lagerholm C, Davis S, Kinchen J, Chen HH, Alham NK, Ashley N, Johnson E, Hublitz P, Bao L, Lukomska J, Andev RS, Björklund E, Kessler BM, Fischer R, Goldin R, Koohy H, Simmons A. Colonic epithelial cell diversity in health and inflammatory bowel disease. *Nature* 2019; **567**: 49-55 [RCA] [PMID: 30814735 DOI: 10.1038/s41586-019-1000-4]

- 10.1038/s41586-019-0992-y] [FullText]
- 9 **Rieder F**, Karrasch T, Ben-Horin S, Schirbel A, Ehehalt R, Wehkamp J, de Haar C, Velin D, Latella G, Scaldaferrri F, Rogler G, Higgins P, Sans M. Results of the 2nd scientific workshop of the ECCO (III): basic mechanisms of intestinal healing. *J Crohns Colitis* 2012; **6**: 373-385 [RCA] [PMID: 22405177 DOI: 10.1016/j.crohns.2011.11.009] [FullText]
 - 10 **van der Flier LG**, Clevers H. Stem cells, self-renewal, and differentiation in the intestinal epithelium. *Annu Rev Physiol* 2009; **71**: 241-260 [RCA] [PMID: 18808327 DOI: 10.1146/annurev.physiol.010908.163145] [FullText]
 - 11 **Williams JM**, Duckworth CA, Burkitt MD, Watson AJ, Campbell BJ, Pritchard DM. Epithelial cell shedding and barrier function: a matter of life and death at the small intestinal villus tip. *Vet Pathol* 2015; **52**: 445-455 [RCA] [PMID: 25428410 DOI: 10.1177/0300985814559404] [Full Text] [Full Text(PDF)]
 - 12 **Gehart H**, Clevers H. Tales from the crypt: new insights into intestinal stem cells. *Nat Rev Gastroenterol Hepatol* 2019; **16**: 19-34 [RCA] [PMID: 30429586 DOI: 10.1038/s41575-018-0081-y] [FullText]
 - 13 **Barker N**. Adult intestinal stem cells: critical drivers of epithelial homeostasis and regeneration. *Nat Rev Mol Cell Biol* 2014; **15**: 19-33 [RCA] [PMID: 24326621 DOI: 10.1038/nrm3721] [FullText]
 - 14 **Haber AL**, Biton M, Rogel N, Herbst RH, Shekhar K, Smilie C, Burgin G, Delorey TM, Howitt MR, Katz Y, Tirosh I, Beyaz S, Dionne D, Zhang M, Raychowdhury R, Garrett WS, Rozenblatt-Rosen O, Shi HN, Yilmaz O, Xavier RJ, Regev A. A single-cell survey of the small intestinal epithelium. *Nature* 2017; **551**: 333-339 [RCA] [PMID: 29144463 DOI: 10.1038/nature24489] [FullText] [Full Text(PDF)]
 - 15 **Beumer J**, Clevers H. Cell fate specification and differentiation in the adult mammalian intestine. *Nat Rev Mol Cell Biol* 2021; **22**: 39-53 [RCA] [PMID: 32958874 DOI: 10.1038/s41580-020-0278-0] [FullText]
 - 16 **Colombel JF**, Narula N, Peyrin-Biroulet L. Management Strategies to Improve Outcomes of Patients With Inflammatory Bowel Diseases. *Gastroenterology* 2017; **152**: 351-361.e5 [RCA] [PMID: 27720840 DOI: 10.1053/j.gastro.2016.09.046] [FullText]
 - 17 **Turner D**, Ricciuto A, Lewis A, D'Amico F, Dhaliwal J, Griffiths AM, Bettenworth D, Sandborn WJ, Sands BE, Reinisch W, Schölmerich J, Bemelman W, Danese S, Mary JY, Rubin D, Colombel JF, Peyrin-Biroulet L, Dotan I, Abreu MT, Dignass A; International Organization for the Study of IBD. STRIDE-II: An Update on the Selecting Therapeutic Targets in Inflammatory Bowel Disease (STRIDE) Initiative of the International Organization for the Study of IBD (IOIBD): Determining Therapeutic Goals for Treat-to-Target strategies in IBD. *Gastroenterology* 2021; **160**: 1570-1583 [RCA] [PMID: 33359090 DOI: 10.1053/j.gastro.2020.12.031] [FullText]
 - 18 **Feuerstein JD**, Isaacs KL, Schneider Y, Siddique SM, Falck-Ytter Y, Singh S; AGA Institute Clinical Guidelines Committee. AGA Clinical Practice Guidelines on the Management of Moderate to Severe Ulcerative Colitis. *Gastroenterology* 2020; **158**: 1450-1461 [RCA] [PMID: 31945371 DOI: 10.1053/j.gastro.2020.01.006] [FullText]
 - 19 **Gordon H**, Minozzi S, Kopylov U, Verstockt B, Chaparro M, Buskens C, Warusavitarne J, Agrawal M, Allocca M, Atreya R, Battat R, Bettenworth D, Bislenghi G, Brown SR, Burisch J, Casanova MJ, Czuber-Dochan W, de Groof J, El-Hussuna A, Ellul P, Fidalgo C, Fiorino G, Gisbert JP, Sabino JG, Hanzel J, Holubar S, Iacucci M, Iqbal N, Kapizioni C, Karmiris K, Kobayashi T, Kotze PG, Luglio G, Maaser C, Moran G, Noor N, Papamichael K, Peros G, Reenaers C, Sica G, Sigall-Boneh R, Vavricka SR, Yanai H, Myreliid P, Adamina M, Raine T. ECCO Guidelines on Therapeutics in Crohn's Disease: Medical Treatment. *J Crohns Colitis* 2024; **18**: 1531-1555 [RCA] [PMID: 38877997 DOI: 10.1093/ecco-jcc/jjae091] [FullText]
 - 20 **Baumgart DC**, Le Berre C. Newer Biologic and Small-Molecule Therapies for Inflammatory Bowel Disease. *N Engl J Med* 2021; **385**: 1302-1315 [RCA] [PMID: 34587387 DOI: 10.1056/NEJMra1907607] [FullText]
 - 21 **Villablanca EJ**, Selin K, Hedin CRH. Mechanisms of mucosal healing: treating inflammatory bowel disease without immunosuppression? *Nat Rev Gastroenterol Hepatol* 2022; **19**: 493-507 [RCA] [PMID: 35440774 DOI: 10.1038/s41575-022-00604-y] [FullText]
 - 22 **Zhang HM**, Yuan S, Meng H, Hou XT, Li J, Xue JC, Li Y, Wang Q, Nan JX, Jin XJ, Zhang QG. Stem Cell-Based Therapies for Inflammatory Bowel Disease. *Int J Mol Sci* 2022; **23**: 8494 [RCA] [PMID: 35955628 DOI: 10.3390/ijms23158494] [FullText] [Full Text(PDF)]
 - 23 **Wang R**, Yao Q, Chen W, Gao F, Li P, Wu J, Yu J, Cao H. Stem cell therapy for Crohn's disease: systematic review and meta-analysis of preclinical and clinical studies. *Stem Cell Res Ther* 2021; **12**: 463 [RCA] [PMID: 34407875 DOI: 10.1186/s13287-021-02533-0] [FullText] [Full Text(PDF)]
 - 24 **Cheng H**, Leblond CP. Origin, differentiation and renewal of the four main epithelial cell types in the mouse small intestine. V. Unitarian Theory of the origin of the four epithelial cell types. *Am J Anat* 1974; **141**: 537-561 [RCA] [PMID: 4440635 DOI: 10.1002/aja.1001410407] [FullText]
 - 25 **Barker N**, van Es JH, Kuipers J, Kujala P, van den Born M, Cozijnsen M, Haegerbarth A, Korving J, Begthel H, Peters PJ, Clevers H. Identification of stem cells in small intestine and colon by marker gene Lgr5. *Nature* 2007; **449**: 1003-1007 [RCA] [PMID: 17934449 DOI: 10.1038/nature06196] [FullText]
 - 26 **Sato T**, Vries RG, Snippert HJ, van de Wetering M, Barker N, Stange DE, van Es JH, Abo A, Kujala P, Peters PJ, Clevers H. Single Lgr5 stem cells build crypt-villus structures in vitro without a mesenchymal niche. *Nature* 2009; **459**: 262-265 [RCA] [PMID: 19329995 DOI: 10.1038/nature07935] [FullText]
 - 27 **Snippert HJ**, van Es JH, van den Born M, Begthel H, Stange DE, Barker N, Clevers H. Prominin-1/CD133 marks stem cells and early progenitors in mouse small intestine. *Gastroenterology* 2009; **136**: 2187-2194.e1 [RCA] [PMID: 19324043 DOI: 10.1053/j.gastro.2009.03.002] [FullText]
 - 28 **van der Flier LG**, Haegerbarth A, Stange DE, van de Wetering M, Clevers H. OLFM4 is a robust marker for stem cells in human intestine and marks a subset of colorectal cancer cells. *Gastroenterology* 2009; **137**: 15-17 [RCA] [PMID: 19450592 DOI: 10.1053/j.gastro.2009.05.035] [FullText]
 - 29 **van der Flier LG**, van Gijn ME, Hatzis P, Kujala P, Haegerbarth A, Stange DE, Begthel H, van den Born M, Guryev V, Oving I, van Es JH, Barker N, Peters PJ, van de Wetering M, Clevers H. Transcription factor achaete scute-like 2 controls intestinal stem cell fate. *Cell* 2009; **136**: 903-912 [RCA] [PMID: 19269367 DOI: 10.1016/j.cell.2009.01.031] [FullText]
 - 30 **Roche KC**, Gracz AD, Liu XF, Newton V, Akiyama H, Magness ST. SOX9 maintains reserve stem cells and preserves radioresistance in mouse small intestine. *Gastroenterology* 2015; **149**: 1553-1563.e10 [RCA] [PMID: 26170137 DOI: 10.1053/j.gastro.2015.07.004] [FullText]
 - 31 **Potten CS**. Extreme sensitivity of some intestinal crypt cells to X and gamma irradiation. *Nature* 1977; **269**: 518-521 [RCA] [PMID: 909602 DOI: 10.1038/269518a0] [FullText]
 - 32 **Potten CS**, Hume WJ, Reid P, Cairns J. The segregation of DNA in epithelial stem cells. *Cell* 1978; **15**: 899-906 [RCA] [PMID: 728994 DOI: 10.1016/0092-8674(78)90274-x] [FullText]
 - 33 **Sangiorgi E**, Capecchi MR. Bmi1 is expressed in vivo in intestinal stem cells. *Nat Genet* 2008; **40**: 915-920 [RCA] [PMID: 18536716 DOI:

- 10.1038/ng.165] [FullText] [Full Text(PDF)]
- 34 **Takeda N**, Jain R, LeBoeuf MR, Wang Q, Lu MM, Epstein JA. Interconversion between intestinal stem cell populations in distinct niches. *Science* 2011; **334**: 1420-1424 [RCA] [PMID: 22075725 DOI: 10.1126/science.1213214] [FullText]
- 35 **Montgomery RK**, Carlone DL, Richmond CA, Farilla L, Kranendonk ME, Henderson DE, Baffour-Awuah NY, Ambruzs DM, Fogli LK, Algra S, Breault DT. Mouse telomerase reverse transcriptase (mTert) expression marks slowly cycling intestinal stem cells. *Proc Natl Acad Sci U S A* 2011; **108**: 179-184 [RCA] [PMID: 21173232 DOI: 10.1073/pnas.1013004108] [FullText]
- 36 **Powell AE**, Wang Y, Li Y, Poulin EJ, Means AL, Washington MK, Higginbotham JN, Juchheim A, Prasad N, Levy SE, Guo Y, Shyr Y, Aronow BJ, Haigis KM, Franklin JL, Coffey RJ. The pan-ErbB negative regulator Lgr1 is an intestinal stem cell marker that functions as a tumor suppressor. *Cell* 2012; **149**: 146-158 [RCA] [PMID: 22464327 DOI: 10.1016/j.cell.2012.02.042] [FullText]
- 37 **Itzkovitz S**, Lyubimova A, Blat IC, Maynard M, van Es J, Lees J, Jacks T, Clevers H, van Oudenaarden A. Single-molecule transcript counting of stem-cell markers in the mouse intestine. *Nat Cell Biol* 2011; **14**: 106-114 [RCA] [PMID: 22119784 DOI: 10.1038/ncb2384] [FullText]
- 38 **Schepers AG**, Vries R, van den Born M, van de Wetering M, Clevers H. Lgr5 intestinal stem cells have high telomerase activity and randomly segregate their chromosomes. *EMBO J* 2011; **30**: 1104-1109 [RCA] [PMID: 21297579 DOI: 10.1038/emboj.2011.26] [FullText]
- 39 **Muñoz J**, Stange DE, Schepers AG, van de Wetering M, Koo BK, Itzkovitz S, Volckmann R, Kung KS, Koster J, Radulescu S, Myant K, Versteeg R, Sansom OJ, van Es JH, Barker N, van Oudenaarden A, Mohammed S, Heck AJ, Clevers H. The Lgr5 intestinal stem cell signature: robust expression of proposed quiescent '+4' cell markers. *EMBO J* 2012; **31**: 3079-3091 [RCA] [PMID: 22692129 DOI: 10.1038/emboj.2012.166] [FullText]
- 40 **Tetteh PW**, Farin HF, Clevers H. Plasticity within stem cell hierarchies in mammalian epithelia. *Trends Cell Biol* 2015; **25**: 100-108 [RCA] [PMID: 25308311 DOI: 10.1016/j.tcb.2014.09.003] [FullText]
- 41 **Vanuytsel T**, Senger S, Fasano A, Shea-Donohue T. Major signaling pathways in intestinal stem cells. *Biochim Biophys Acta* 2013; **1830**: 2410-2426 [RCA] [PMID: 22922290 DOI: 10.1016/j.bbagen.2012.08.006] [FullText]
- 42 **Malagola E**, Vasciaveo A, Ochiai Y, Kim W, Zheng B, Zanella L, Wang ALE, Middelhoff M, Nienhüser H, Deng L, Wu F, Waterbury QT, Belin B, LaBella J, Zamechek LB, Wong MH, Li L, Guha C, Cheng CW, Yan KS, Califano A, Wang TC. Isthmus progenitor cells contribute to homeostatic cellular turnover and support regeneration following intestinal injury. *Cell* 2024; **187**: 3056-3071.e17 [RCA] [PMID: 38848678 DOI: 10.1016/j.cell.2024.05.004] [FullText]
- 43 **Capdevila C**, Miller J, Cheng L, Kornberg A, George JJ, Lee H, Botella T, Moon CS, Murray JW, Lam S, Calderon RI, Malagola E, Whelan G, Lin CS, Han A, Wang TC, Sims PA, Yan KS. Time-resolved fate mapping identifies the intestinal upper crypt zone as an origin of Lgr5+ crypt base columnar cells. *Cell* 2024; **187**: 3039-3055.e14 [RCA] [PMID: 38848677 DOI: 10.1016/j.cell.2024.05.001] [FullText] [Full Text (PDF)]
- 44 **Mehra L**, Bhowmik S, Makharia GK, Das P. Intestinal stem cell niche: An upcoming area of immense importance in gastrointestinal disorders. *Indian J Gastroenterol* 2025; **44**: 8-23 [RCA] [PMID: 39514159 DOI: 10.1007/s12664-024-01699-8] [FullText]
- 45 **Sato T**, van Es JH, Snippert HJ, Stange DE, Vries RG, van den Born M, Barker N, Shroyer NF, van de Wetering M, Clevers H. Paneth cells constitute the niche for Lgr5 stem cells in intestinal crypts. *Nature* 2011; **469**: 415-418 [RCA] [PMID: 21113151 DOI: 10.1038/nature09637] [FullText] [Full Text(PDF)]
- 46 **Cray P**, Sheahan BJ, Dekaney CM. Secretory Sorcery: Paneth Cell Control of Intestinal Repair and Homeostasis. *Cell Mol Gastroenterol Hepatol* 2021; **12**: 1239-1250 [RCA] [PMID: 34153524 DOI: 10.1016/j.jcmgh.2021.06.006] [FullText] [Full Text(PDF)]
- 47 **Sei Y**, Feng J, Samsel L, White A, Zhao X, Yun S, Citrin D, McCoy JP, Sundaresan S, Hayes MM, Merchant JL, Leiter A, Wank SA. Mature enteroendocrine cells contribute to basal and pathological stem cell dynamics in the small intestine. *Am J Physiol Gastrointest Liver Physiol* 2018; **315**: G495-G510 [RCA] [PMID: 29848020 DOI: 10.1152/ajpgi.00036.2018] [FullText]
- 48 **Kabiri Z**, Greicius G, Madan B, Biechele S, Zhong Z, Zaribafzadeh H, Edison, Aliyev J, Wu Y, Bunte R, Williams BO, Rossant J, Virshup DM. Stroma provides an intestinal stem cell niche in the absence of epithelial Wnts. *Development* 2014; **141**: 2206-2215 [RCA] [PMID: 24821987 DOI: 10.1242/dev.104976] [FullText]
- 49 **Xiang J**, Guo J, Zhang S, Wu H, Chen YG, Wang J, Li B, Liu H. A stromal lineage maintains crypt structure and villus homeostasis in the intestinal stem cell niche. *BMC Biol* 2023; **21**: 169 [RCA] [PMID: 37553612 DOI: 10.1186/s12915-023-01667-2] [FullText] [Full Text(PDF)]
- 50 **Viola MF**, Boeckxstaens G. Niche-specific functional heterogeneity of intestinal resident macrophages. *Gut* 2021; **70**: 1383-1395 [RCA] [PMID: 33384336 DOI: 10.1136/gutjnl-2020-323121] [FullText] [Full Text(PDF)]
- 51 **Biton M**, Haber AL, Rogel N, Burgin G, Beyaz S, Schnell A, Ashenberg O, Su CW, Smillie C, Shekhar K, Chen Z, Wu C, Ordovas-Montanes J, Alvarez D, Herbst RH, Zhang M, Tirosch I, Dionne D, Nguyen LT, Xifaras ME, Shalek AK, von Andrian UH, Graham DB, Rozenblatt-Rosen O, Shi HN, Kuchroo V, Yilmaz OH, Regev A, Xavier RJ. T Helper Cell Cytokines Modulate Intestinal Stem Cell Renewal and Differentiation. *Cell* 2018; **175**: 1307-1320.e22 [RCA] [PMID: 30392957 DOI: 10.1016/j.cell.2018.10.008] [FullText]
- 52 **Qin K**, Yu M, Fan J, Wang H, Zhao P, Zhao G, Zeng W, Chen C, Wang Y, Wang A, Schwartz Z, Hong J, Song L, Wagstaff W, Haydon RC, Luu HH, Ho SH, Strelzow J, Reid RR, He TC, Shi LL. Canonical and noncanonical Wnt signaling: Multilayered mediators, signaling mechanisms and major signaling crosstalk. *Genes Dis* 2024; **11**: 103-134 [RCA] [PMID: 37588235 DOI: 10.1016/j.gendis.2023.01.030] [Full Text] [Full Text(PDF)]
- 53 **Clevers H**, Loh KM, Nusse R. Stem cell signaling. An integral program for tissue renewal and regeneration: Wnt signaling and stem cell control. *Science* 2014; **346**: 1248012 [RCA] [PMID: 25278615 DOI: 10.1126/science.1248012] [FullText]
- 54 **Nusse R**, Clevers H. Wnt/ β -Catenin Signaling, Disease, and Emerging Therapeutic Modalities. *Cell* 2017; **169**: 985-999 [RCA] [PMID: 28575679 DOI: 10.1016/j.cell.2017.05.016] [FullText]
- 55 **Korinek V**, Barker N, Moerer P, van Donselaar E, Huls G, Peters PJ, Clevers H. Depletion of epithelial stem-cell compartments in the small intestine of mice lacking Tcf-4. *Nat Genet* 1998; **19**: 379-383 [RCA] [PMID: 9697701 DOI: 10.1038/1270] [FullText]
- 56 **van Es JH**, Haegerbarth A, Kujala P, Itzkovitz S, Koo BK, Boj SF, Korving J, van den Born M, van Oudenaarden A, Robine S, Clevers H. A critical role for the Wnt effector Tcf4 in adult intestinal homeostatic self-renewal. *Mol Cell Biol* 2012; **32**: 1918-1927 [RCA] [PMID: 22393260 DOI: 10.1128/MCB.06288-11] [FullText]
- 57 **Cancer Genome Atlas Network**. Comprehensive molecular characterization of human colon and rectal cancer. *Nature* 2012; **487**: 330-337 [RCA] [PMID: 22810696 DOI: 10.1038/nature11252] [FullText] [Full Text(PDF)]
- 58 **van Neerven SM**, de Groot NE, Nijman LE, Scicluna BP, van Driel MS, Lecca MC, Warmerdam DO, Kakkar V, Moreno LF, Vieira Braga FA, Sanches DR, Ramesh P, Ten Hoor S, Aelvoet AS, van Boxel MF, Koens L, Krawczyk PM, Koster J, Dekker E, Medema JP, Winton DJ, Bijlsma MF, Morrissey E, Léveillé N, Vermeulen L. Apc-mutant cells act as supercompetitors in intestinal tumour initiation. *Nature* 2021; **594**:

- 436-441 [RCA] [PMID: 34079128 DOI: 10.1038/s41586-021-03558-4] [FullText]
- 59 **Farin HF**, Jordens I, Mosa MH, Basak O, Korving J, Tauriello DV, de Punder K, Angers S, Peters PJ, Maurice MM, Clevers H. Visualization of a short-range Wnt gradient in the intestinal stem-cell niche. *Nature* 2016; **530**: 340-343 [RCA] [PMID: 26863187 DOI: 10.1038/nature16937] [FullText]
- 60 **Yan KS**, Janda CY, Chang J, Zheng GXY, Larkin KA, Luca VC, Chia LA, Mah AT, Han A, Terry JM, Ootani A, Roelf K, Lee M, Yuan J, Li X, Bolen CR, Wilhelmy J, Davies PS, Ueno H, von Furstenberg RJ, Belgrader P, Ziraldo SB, Ordóñez H, Henning SJ, Wong MH, Snyder MP, Weissman IL, Hsueh AJ, Mikkelsen TS, Garcia KC, Kuo CJ. Non-equivalence of Wnt and R-spondin ligands during Lgr5(+) intestinal stem-cell self-renewal. *Nature* 2017; **545**: 238-242 [RCA] [PMID: 28467820 DOI: 10.1038/nature22313] [FullText] [Full Text(PDF)]
- 61 **de Lau W**, Barker N, Low TY, Koo BK, Li VS, Teunissen H, Kujala P, Haegebarth A, Peters PJ, van de Wetering M, Stange DE, van Es JE, Guardavaccaro D, Schasfoort RB, Mohri Y, Nishimori K, Mohammed S, Heck AJ, Clevers H. Lgr5 homologues associate with Wnt receptors and mediate R-spondin signalling. *Nature* 2011; **476**: 293-297 [RCA] [PMID: 21727895 DOI: 10.1038/nature10337] [FullText]
- 62 **de Lau W**, Peng WC, Gros P, Clevers H. The R-spondin/Lgr5/Rnf43 module: regulator of Wnt signal strength. *Genes Dev* 2014; **28**: 305-316 [RCA] [PMID: 24532711 DOI: 10.1101/gad.235473.113] [FullText] [Full Text(PDF)]
- 63 **Storm EE**, Durinck S, de Sousa e Melo F, Tremayne J, Kljavin N, Tan C, Ye X, Chiu C, Pham T, Hongo JA, Bainbridge T, Firestein R, Blackwood E, Metcalfe C, Stawiski EW, Yauch RL, Wu Y, de Sauvage FJ. Targeting PTPRK-RSPO3 colon tumours promotes differentiation and loss of stem-cell function. *Nature* 2016; **529**: 97-100 [RCA] [PMID: 26700806 DOI: 10.1038/nature16466] [FullText]
- 64 **Goto N**, Goto S, Imada S, Hosseini S, Deshpande V, Yilmaz ÖH. Lymphatics and fibroblasts support intestinal stem cells in homeostasis and injury. *Cell Stem Cell* 2022; **29**: 1246-1261.e6 [RCA] [PMID: 35931033 DOI: 10.1016/j.stem.2022.06.013] [FullText]
- 65 **Basak O**, Beumer J, Wiebrands K, Seno H, van Oudenaarden A, Clevers H. Induced Quiescence of Lgr5+ Stem Cells in Intestinal Organoids Enables Differentiation of Hormone-Producing Enteroendocrine Cells. *Cell Stem Cell* 2017; **20**: 177-190.e4 [RCA] [PMID: 27939219 DOI: 10.1016/j.stem.2016.11.001] [FullText]
- 66 **Calafiore M**, Fu YY, Vinci P, Arnhold V, Chang WY, Jansen SA, Egorova A, Takashima S, Kuttiyari J, Ito T, Serody J, Nakae S, Turnquist H, van Es J, Clevers H, Lindemans CA, Blazar BR, Hanash AM. A tissue-intrinsic IL-33/EGF circuit promotes epithelial regeneration after intestinal injury. *Nat Commun* 2023; **14**: 5411 [RCA] [PMID: 37669929 DOI: 10.1038/s41467-023-40993-5] [FullText]
- 67 **Zhang C**, Jin Y, Marchetti M, Lewis MR, Hammouda OT, Edgar BA. EGFR signaling activates intestinal stem cells by promoting mitochondrial biogenesis and β -oxidation. *Curr Biol* 2022; **32**: 3704-3719.e7 [RCA] [PMID: 35896119 DOI: 10.1016/j.cub.2022.07.003] [Full Text]
- 68 **Jardé T**, Chan WH, Rossello FJ, Kaur Kahlon T, Theocharous M, Kurian Arackal T, Flores T, Giraud M, Richards E, Chan E, Kerr G, Engel RM, Prasko M, Donoghue JF, Abe SI, Phesse TJ, Nefzger CM, McMurrick PJ, Powell DR, Daly RJ, Polo JM, Abud HE. Mesenchymal Niche-Derived Neuregulin-1 Drives Intestinal Stem Cell Proliferation and Regeneration of Damaged Epithelium. *Cell Stem Cell* 2020; **27**: 646-662.e7 [RCA] [PMID: 32693086 DOI: 10.1016/j.stem.2020.06.021] [FullText]
- 69 **Zhou B**, Lin W, Long Y, Yang Y, Zhang H, Wu K, Chu Q. Notch signaling pathway: architecture, disease, and therapeutics. *Signal Transduct Target Ther* 2022; **7**: 95 [RCA] [PMID: 35332121 DOI: 10.1038/s41392-022-00934-y] [FullText] [Full Text(PDF)]
- 70 **Demitrack ES**, Samuelson LC. Notch regulation of gastrointestinal stem cells. *J Physiol* 2016; **594**: 4791-4803 [RCA] [PMID: 26848053 DOI: 10.1113/JP271667] [FullText]
- 71 **VanDussen KL**, Carulli AJ, Keeley TM, Patel SR, Puthoff BJ, Magness ST, Tran IT, Maillard I, Siebel C, Kolterud Å, Grosse AS, Gumucio DL, Ernst SA, Tsai YH, Dempsey PJ, Samuelson LC. Notch signaling modulates proliferation and differentiation of intestinal crypt base columnar stem cells. *Development* 2012; **139**: 488-497 [RCA] [PMID: 22190634 DOI: 10.1242/dev.070763] [FullText]
- 72 **Pellegrinet L**, Rodilla V, Liu Z, Chen S, Koch U, Espinosa L, Kaestner KH, Kopan R, Lewis J, Radtke F. Dll1- and dll4-mediated notch signaling are required for homeostasis of intestinal stem cells. *Gastroenterology* 2011; **140**: 1230-1240.e1 [RCA] [PMID: 21238454 DOI: 10.1053/j.gastro.2011.01.005] [FullText] [Full Text(PDF)]
- 73 **Kim TH**, Li F, Ferreira-Neira I, Ho LL, Luyten A, Nalapareddy K, Long H, Verzi M, Shivdasani RA. Broadly permissive intestinal chromatin underlies lateral inhibition and cell plasticity. *Nature* 2014; **506**: 511-515 [RCA] [PMID: 24413398 DOI: 10.1038/nature12903] [FullText] [Full Text(PDF)]
- 74 **Ueo T**, Imayoshi I, Kobayashi T, Ohtsuka T, Seno H, Nakase H, Chiba T, Kageyama R. The role of Hes genes in intestinal development, homeostasis and tumor formation. *Development* 2012; **139**: 1071-1082 [RCA] [PMID: 22318232 DOI: 10.1242/dev.069070] [FullText]
- 75 **Yang Q**, Bermingham NA, Finegold MJ, Zoghbi HY. Requirement of Math1 for secretory cell lineage commitment in the mouse intestine. *Science* 2001; **294**: 2155-2158 [RCA] [PMID: 11739954 DOI: 10.1126/science.1065718] [FullText]
- 76 **Shroyer NF**, Helmrich MA, Wang VY, Antalffy B, Henning SJ, Zoghbi HY. Intestine-specific ablation of mouse atonal homolog 1 (Math1) reveals a role in cellular homeostasis. *Gastroenterology* 2007; **132**: 2478-2488 [RCA] [PMID: 17570220 DOI: 10.1053/j.gastro.2007.03.047] [FullText]
- 77 **Ludikhuize MC**, Meerlo M, Gallego MP, Xanthakis D, Burgaya Julià M, Nguyen NTB, Brombacher EC, Liv N, Maurice MM, Paik JH, Burgering BMT, Rodriguez Colman MJ. Mitochondria Define Intestinal Stem Cell Differentiation Downstream of a FOXO/Notch Axis. *Cell Metab* 2020; **32**: 889-900.e7 [RCA] [PMID: 33147486 DOI: 10.1016/j.cmet.2020.10.005] [FullText]
- 78 **Derynck R**, Zhang YE. Smad-dependent and Smad-independent pathways in TGF-beta family signalling. *Nature* 2003; **425**: 577-584 [RCA] [PMID: 14534577 DOI: 10.1038/nature02006] [FullText]
- 79 **Zhang Y**, Que J. BMP Signaling in Development, Stem Cells, and Diseases of the Gastrointestinal Tract. *Annu Rev Physiol* 2020; **82**: 251-273 [RCA] [PMID: 31618602 DOI: 10.1146/annurev-physiol-021119-034500] [FullText]
- 80 **McCarthy N**, Manieri E, Storm EE, Saadatpour A, Luoma AM, Kapoor VN, Madha S, Gaynor LT, Cox C, Keerthivasan S, Wucherpennig K, Yuan GC, de Sauvage FJ, Turley SJ, Shivdasani RA. Distinct Mesenchymal Cell Populations Generate the Essential Intestinal BMP Signaling Gradient. *Cell Stem Cell* 2020; **26**: 391-402.e5 [RCA] [PMID: 32084389 DOI: 10.1016/j.stem.2020.01.008] [FullText]
- 81 **Wang Y**, Lou R, Zhang Z, Xiao C, Yu S, Wei S, Liu Y, Fu W, Li B, Chen YG. Stromal BMP signaling regulates mucin production in the large intestine via interleukin-1/17. *Sci Adv* 2023; **9**: eadi1827 [RCA] [PMID: 37889976 DOI: 10.1126/sciadv.adi1827] [FullText] [Full Text(PDF)]
- 82 **Kraiczky J**, McCarthy N, Malagola E, Tie G, Madha S, Boffelli D, Wagner DE, Wang TC, Shivdasani RA. Graded BMP signaling within intestinal crypt architecture directs self-organization of the Wnt-secreting stem cell niche. *Cell Stem Cell* 2023; **30**: 433-449.e8 [RCA] [PMID: 37028407 DOI: 10.1016/j.stem.2023.03.004] [FullText]
- 83 **Hu X**, Ivashkiv LB. Cross-regulation of signaling pathways by interferon-gamma: implications for immune responses and autoimmune diseases. *Immunity* 2009; **31**: 539-550 [RCA] [PMID: 19833085 DOI: 10.1016/j.immuni.2009.09.002] [FullText]

- 84 **Takashima S**, Martin ML, Jansen SA, Fu Y, Bos J, Chandra D, O'Connor MH, Mertelsmann AM, Vinci P, Kuttiyara J, Devlin SM, Middendorp S, Calafiore M, Egorova A, Kleppe M, Lo Y, Shroyer NF, Cheng EH, Levine RL, Liu C, Kolesnick R, Lindemans CA, Hanash AM. T cell-derived interferon- γ programs stem cell death in immune-mediated intestinal damage. *Sci Immunol* 2019; 4: eaay8556 [RCA] [PMID: 31811055 DOI: 10.1126/sciimmunol.aay8556] [FullText]
- 85 **Chen S**, Zheng Y, Ran X, Du H, Feng H, Yang L, Wen Y, Lin C, Wang S, Huang M, Yan Z, Wu D, Wang H, Ge G, Zeng A, Zeng YA, Chen J. Integrin $\alpha E\beta 7(+)$ T cells direct intestinal stem cell fate decisions *via* adhesion signaling. *Cell Res* 2021; 31: 1291-1307 [RCA] [PMID: 34518654 DOI: 10.1038/s41422-021-00561-2] [FullText]
- 86 **Gronke K**, Hernández PP, Zimmermann J, Klose CSN, Kofoed-Branzk M, Guendel F, Witkowski M, Tizian C, Amann L, Schumacher F, Glatt H, Triantafylloulou A, Diefenbach A. Interleukin-22 protects intestinal stem cells against genotoxic stress. *Nature* 2019; 566: 249-253 [RCA] [PMID: 30700914 DOI: 10.1038/s41586-019-0899-7] [FullText] [Full Text(PDF)]
- 87 **Romera-Hernández M**, Aparicio-Domingo P, Papazian N, Karrich JJ, Cornelissen F, Hoogenboezem RM, Samsom JN, Cupedo T. Yap1-Driven Intestinal Repair Is Controlled by Group 3 Innate Lymphoid Cells. *Cell Rep* 2020; 30: 37-45.e3 [RCA] [PMID: 31914395 DOI: 10.1016/j.celrep.2019.11.115] [FullText]
- 88 **Zhu P**, Zhu X, Wu J, He L, Lu T, Wang Y, Liu B, Ye B, Sun L, Fan D, Wang J, Yang L, Qin X, Du Y, Li C, He L, Ren W, Wu X, Tian Y, Fan Z. IL-13 secreted by ILC2s promotes the self-renewal of intestinal stem cells through circular RNA circPan3. *Nat Immunol* 2019; 20: 183-194 [RCA] [PMID: 30643264 DOI: 10.1038/s41590-018-0297-6] [FullText]
- 89 **Jowett GM**, Norman MDA, Yu TTL, Rosell Arévalo P, Hoogland D, Lust ST, Read E, Hamrud E, Walters NJ, Niazi U, Chung MWH, Marciano D, Omer OS, Zabinski T, Danovi D, Lord GM, Hilborn J, Evans ND, Dreiss CA, Bozec L, Oommen OP, Lorenz CD, da Silva RMP, Neves JF, Gentleman E. ILC1 drive intestinal epithelial and matrix remodelling. *Nat Mater* 2021; 20: 250-259 [RCA] [PMID: 32895507 DOI: 10.1038/s41563-020-0783-8] [FullText]
- 90 **Stojanović O**, Miguel-Aliaga I, Trajkovski M. Intestinal plasticity and metabolism as regulators of organismal energy homeostasis. *Nat Metab* 2022; 4: 1444-1458 [RCA] [PMID: 36396854 DOI: 10.1038/s42255-022-00679-6] [FullText]
- 91 **Tinkum KL**, Stemler KM, White LS, Loza AJ, Jeter-Jones S, Michalski BM, Kuzmicki C, Pless R, Stappenbeck TS, Piwnica-Worms D, Piwnica-Worms H. Fasting protects mice from lethal DNA damage by promoting small intestinal epithelial stem cell survival. *Proc Natl Acad Sci U S A* 2015; 112: E7148-E7154 [RCA] [PMID: 26644583 DOI: 10.1073/pnas.1509249112] [FullText]
- 92 **Yilmaz ÖH**, Katajisto P, Lamming DW, Gültekin Y, Bauer-Rowe KE, Sengupta S, Birsoy K, Dursun A, Yilmaz VO, Selig M, Nielsen GP, Mino-Kenudson M, Zuberberg LR, Bhan AK, Deshpande V, Sabatini DM. mTORC1 in the Paneth cell niche couples intestinal stem-cell function to calorie intake. *Nature* 2012; 486: 490-495 [RCA] [PMID: 22722868 DOI: 10.1038/nature11163] [FullText] [Full Text(PDF)]
- 93 **Imada S**, Khawaled S, Shin H, Meckelmann SW, Whittaker CA, Corrêa RO, Alquati C, Lu Y, Tie G, Pradhan D, Calibasi-Kocal G, Nascentes Melo LM, Allies G, Rösler J, Wittenhofer P, Krystkiewicz J, Schmitz OJ, Roper J, Vinolo MAR, Ricciardiello L, Lien EC, Vander Heiden MG, Shivdasani RA, Cheng CW, Tasdogan A, Yilmaz ÖH. Short-term post-fast refeeding enhances intestinal stemness *via* polyamines. *Nature* 2024; 633: 895-904 [RCA] [PMID: 39169180 DOI: 10.1038/s41586-024-07840-z] [FullText] [Full Text(PDF)]
- 94 **Mattila J**, Viitanen A, Fabris G, Strutynska T, Korzelius J, Hietakangas V. Stem cell mTOR signaling directs region-specific cell fate decisions during intestinal nutrient adaptation. *Sci Adv* 2024; 10: eadi2671 [RCA] [PMID: 38335286 DOI: 10.1126/sciadv.adi2671] [FullText]
- 95 **Beyaz S**, Mana MD, Roper J, Kedrin D, Saadatpour A, Hong SJ, Bauer-Rowe KE, Xifaras ME, Akkad A, Arias E, Pinello L, Katz Y, Shinagare S, Abu-Remaileh M, Mihaylova MM, Lamming DW, Dogum R, Guo G, Bell GW, Selig M, Nielsen GP, Gupta N, Ferrone CR, Deshpande V, Yuan GC, Orkin SH, Sabatini DM, Yilmaz ÖH. High-fat diet enhances stemness and tumorigenicity of intestinal progenitors. *Nature* 2016; 531: 53-58 [RCA] [PMID: 26935695 DOI: 10.1038/nature17173] [FullText] [Full Text(PDF)]
- 96 **Burr AHP**, Ji J, Ozler K, Mentrup HL, Eskioçak O, Yueh B, Cumberland R, Menk AV, Rittenhouse N, Marshall CW, Chiaranunt P, Zhang X, Mullinax L, Overacre-Delgoffe A, Cooper VS, Poholek AC, Delgoffe GM, Mollen KP, Beyaz S, Hand TW. Excess Dietary Sugar Alters Colonocyte Metabolism and Impairs the Proliferative Response to Damage. *Cell Mol Gastroenterol Hepatol* 2023; 16: 287-316 [RCA] [PMID: 37172822 DOI: 10.1016/j.jcmgh.2023.05.001] [FullText]
- 97 **Calibasi-Kocal G**, Mashinchian O, Basbinar Y, Ellidokuz E, Cheng CW, Yilmaz ÖH. Nutritional Control of Intestinal Stem Cells in Homeostasis and Tumorigenesis. *Trends Endocrinol Metab* 2021; 32: 20-35 [RCA] [PMID: 33277157 DOI: 10.1016/j.tem.2020.11.003] [Full Text]
- 98 **Ma N**, Chen X, Johnston LJ, Ma X. Gut microbiota-stem cell niche crosstalk: A new territory for maintaining intestinal homeostasis. *Imeta* 2022; 1: e54 [RCA] [PMID: 38867904 DOI: 10.1002/imt2.54] [FullText] [Full Text(PDF)]
- 99 **Wu H**, Mu C, Xu L, Yu K, Shen L, Zhu W. Host-microbiota interaction in intestinal stem cell homeostasis. *Gut Microbes* 2024; 16: 2353399 [RCA] [PMID: 38757687 DOI: 10.1080/19490976.2024.2353399] [FullText]
- 100 **Zhu P**, Lu T, Wu J, Fan D, Liu B, Zhu X, Guo H, Du Y, Liu F, Tian Y, Fan Z. Gut microbiota drives macrophage-dependent self-renewal of intestinal stem cells *via* niche enteric serotonergic neurons. *Cell Res* 2022; 32: 555-569 [RCA] [PMID: 35379903 DOI: 10.1038/s41422-022-00645-7] [FullText]
- 101 **Saez A**, Herrero-Fernandez B, Gomez-Bris R, Sánchez-Martinez H, Gonzalez-Granado JM. Pathophysiology of Inflammatory Bowel Disease: Innate Immune System. *Int J Mol Sci* 2023; 24: 1526 [RCA] [PMID: 36675038 DOI: 10.3390/ijms24021526] [FullText] [Full Text(PDF)]
- 102 **Lu Q**, Yang MF, Liang YJ, Xu J, Xu HM, Nie YQ, Wang LS, Yao J, Li DF. Immunology of Inflammatory Bowel Disease: Molecular Mechanisms and Therapeutics. *J Inflamm Res* 2022; 15: 1825-1844 [RCA] [PMID: 35310454 DOI: 10.2147/JIR.S353038] [FullText] [Full Text(PDF)]
- 103 **Rieder F**, Mukherjee PK, Massey WJ, Wang Y, Fiocchi C. Fibrosis in IBD: from pathogenesis to therapeutic targets. *Gut* 2024; 73: 854-866 [RCA] [PMID: 38233198 DOI: 10.1136/gutjnl-2023-329963] [FullText]
- 104 **Chittimalli K**, Jahan J, Sakamuri A, McAdams ZL, Ericsson AC, Jarajapu YPR. Restoration of the gut barrier integrity and restructuring of the gut microbiome in aging by angiotensin-(1-7). *Clin Sci (Lond)* 2023; 137: 913-930 [RCA] [PMID: 37254732 DOI: 10.1042/CS20220904] [Full Text]
- 105 **Gersemann M**, Stange EF, Wehkamp J. From intestinal stem cells to inflammatory bowel diseases. *World J Gastroenterol* 2011; 17: 3198-3203 [RCA] [PMID: 21912468 DOI: 10.3748/wjg.v17.i27.3198] [FullText] [Full Text(PDF)]
- 106 **Schmitt M**, Schewe M, Sacchetti A, Fejtjel D, van de Geer WS, Teeuwssen M, Sleddens HF, Joosten R, van Royen ME, van de Werken HJG, van Es J, Clevers H, Fodde R. Paneth Cells Respond to Inflammation and Contribute to Tissue Regeneration by Acquiring Stem-like Features through SCF/c-Kit Signaling. *Cell Rep* 2018; 24: 2312-2328.e7 [RCA] [PMID: 30157426 DOI: 10.1016/j.celrep.2018.07.085] [FullText]
- 107 **Wang X**, Kong X, Qin Y, Zhu X, Liu W, Han J. Milk phospholipids ameliorate mouse colitis associated with colonic goblet cell depletion *via*

- the Notch pathway. *Food Funct* 2019; **10**: 4608–4619 [RCA] [PMID: 31290530 DOI: 10.1039/c9fo00690g] [FullText]
- 108 **Shinoda M**, Shin-Ya M, Naito Y, Kishida T, Ito R, Suzuki N, Yasuda H, Sakagami J, Imanishi J, Kataoka K, Mazda O, Yoshikawa T. Early-stage blocking of Notch signaling inhibits the depletion of goblet cells in dextran sodium sulfate-induced colitis in mice. *J Gastroenterol* 2010; **45**: 608–617 [RCA] [PMID: 20169455 DOI: 10.1007/s00535-010-0210-z] [FullText]
- 109 **Zhao Y**, Luan H, Gao H, Wu X, Zhang Y, Li R. Gegen Qinlian decoction maintains colonic mucosal homeostasis in acute/chronic ulcerative colitis via bidirectionally modulating dysregulated Notch signaling. *Phytomedicine* 2020; **68**: 153182 [RCA] [PMID: 32065953 DOI: 10.1016/j.phymed.2020.153182] [FullText]
- 110 **Ren X**, Liu Q, Zhou P, Zhou T, Wang D, Mei Q, Flavell RA, Liu Z, Li M, Pan W, Zhu S. DHX9 maintains epithelial homeostasis by restraining R-loop-mediated genomic instability in intestinal stem cells. *Nat Commun* 2024; **15**: 3080 [RCA] [PMID: 38594251 DOI: 10.1038/s41467-024-47235-2] [FullText]
- 111 **Buttó LF**, Pelletier A, More SK, Zhao N, Osme A, Hager CL, Ghannoum MA, Sekaly RP, Cominelli F, Dave M. Intestinal Stem Cell Niche Defects Result in Impaired 3D Organoid Formation in Mouse Models of Crohn's Disease-like Ileitis. *Stem Cell Reports* 2020; **15**: 389–407 [RCA] [PMID: 32679063 DOI: 10.1016/j.stemcr.2020.06.017] [FullText] [Full Text(PDF)]
- 112 **Bao W**, You Y, Ni J, Hou H, Lyu J, Feng G, Wang Y, You K, Zhang S, Zhang L, Cao X, Wang X, Li H, Li H, Xu J, Liu C, Luo X, Du P, Chen D, Shen X. Inhibiting sorting nexin 10 promotes mucosal healing through SREBP2-mediated stemness restoration of intestinal stem cells. *Sci Adv* 2023; **9**: eadh5016 [RCA] [PMID: 37647408 DOI: 10.1126/sciadv.adh5016] [FullText]
- 113 **Wang X**, Bootsma H, Kroese F, Dijkstra G, Pringle S. Senescent Stem and Transient Amplifying Cells in Crohn's Disease Intestine. *Inflamm Bowel Dis* 2020; **26**: e8–e9 [RCA] [PMID: 31769481 DOI: 10.1093/ibd/izz295] [FullText] [Full Text(PDF)]
- 114 **He D**, Wu H, Xiang J, Ruan X, Peng P, Ruan Y, Chen YG, Wang Y, Yu Q, Zhang H, Habib SL, De Pinho RA, Liu H, Li B. Gut stem cell aging is driven by mTORC1 via a p38 MAPK-p53 pathway. *Nat Commun* 2020; **11**: 37 [RCA] [PMID: 31896747 DOI: 10.1038/s41467-019-13911-x] [FullText] [Full Text(PDF)]
- 115 **Qi Y**, He J, Zhang Y, Ge Q, Wang Q, Chen L, Xu J, Wang L, Chen X, Jia D, Lin Y, Xu C, Zhang Y, Hou T, Si J, Chen S, Wang L. Heat-inactivated Bifidobacterium adolescentis ameliorates colon senescence through Paneth-like-cell-mediated stem cell activation. *Nat Commun* 2023; **14**: 6121 [RCA] [PMID: 3777508 DOI: 10.1038/s41467-023-41827-0] [FullText] [Full Text(PDF)]
- 116 **Girish N**, Liu CY, Gadeock S, Gomez ML, Huang Y, Sharifkhodaei Z, Washington MK, Polk DB. Persistence of Lgr5+ colonic epithelial stem cells in mouse models of inflammatory bowel disease. *Am J Physiol Gastrointest Liver Physiol* 2021; **321**: G308–G324 [RCA] [PMID: 34260310 DOI: 10.1152/ajpgi.00248.2020] [FullText]
- 117 **Wang Z**, Tan C, Duan C, Wu J, Zhou D, Hou L, Qian W, Han C, Hou X. FUT2-dependent fucosylation of HYOU1 protects intestinal stem cells against inflammatory injury by regulating unfolded protein response. *Redox Biol* 2023; **60**: 102618 [RCA] [PMID: 36724577 DOI: 10.1016/j.redox.2023.102618] [FullText] [Full Text(PDF)]
- 118 **Zhang T**, Ding C, Chen H, Zhao J, Chen Z, Chen B, Mao K, Hao Y, Roulis M, Xu H, Kluger Y, Zou Q, Ye Y, Zhan M, Flavell RA, Li HB. m(6)A mRNA modification maintains colonic epithelial cell homeostasis via NF-κB-mediated antiapoptotic pathway. *Sci Adv* 2022; **8**: eabl5723 [RCA] [PMID: 35333576 DOI: 10.1126/sciadv.abl5723] [FullText]
- 119 **Bernstein CN**, Loftus EV Jr, Ng SC, Lakatos PL, Moum B; Epidemiology and Natural History Task Force of the International Organization for the Study of Inflammatory Bowel Disease (IOIBD). Hospitalisations and surgery in Crohn's disease. *Gut* 2012; **61**: 622–629 [RCA] [PMID: 22267595 DOI: 10.1136/gutjnl-2011-301397] [FullText]
- 120 **Leeb SN**, Vogl D, Grossmann J, Falk W, Schölmerich J, Rogler G, Gelbmann CM. Autocrine fibronectin-induced migration of human colonic fibroblasts. *Am J Gastroenterol* 2004; **99**: 335–340 [RCA] [PMID: 15046226 DOI: 10.1111/j.1572-0241.2004.04044.x] [FullText]
- 121 **Lovisa S**, Genovese G, Danese S. Role of Epithelial-to-Mesenchymal Transition in Inflammatory Bowel Disease. *J Crohns Colitis* 2019; **13**: 659–668 [RCA] [PMID: 30520951 DOI: 10.1093/ecco-jcc/jjy201] [FullText]
- 122 **D'Alessio S**, Ungaro F, Noviello D, Lovisa S, Peyrin-Biroulet L, Danese S. Revisiting fibrosis in inflammatory bowel disease: the gut thickens. *Nat Rev Gastroenterol Hepatol* 2022; **19**: 169–184 [RCA] [PMID: 34876680 DOI: 10.1038/s41575-021-00543-0] [FullText]
- 123 **Manetti M**, Rosa I, Messerini L, Ibba-Manneschi L. Teloocytes are reduced during fibrotic remodelling of the colonic wall in ulcerative colitis. *J Cell Mol Med* 2015; **19**: 62–73 [RCA] [PMID: 25283476 DOI: 10.1111/jcmm.12457] [FullText] [Full Text(PDF)]
- 124 **Ibba-Manneschi L**, Rosa I, Manetti M. Teloocytes in Chronic Inflammatory and Fibrotic Diseases. *Adv Exp Med Biol* 2016; **913**: 51–76 [RCA] [PMID: 27796880 DOI: 10.1007/978-981-10-1061-3_4] [FullText]
- 125 **Yui S**, Azzolin L, Maimets M, Pedersen MT, Fordham RP, Hansen SL, Larsen HL, Guiu J, Alves MRP, Rundsten CF, Johansen JV, Li Y, Madsen CD, Nakamura T, Watanabe M, Nielsen OH, Schweiger PJ, Piccolo S, Jensen KB. YAP/TAZ-Dependent Reprogramming of Colonic Epithelium Links ECM Remodeling to Tissue Regeneration. *Cell Stem Cell* 2018; **22**: 35–49.e7 [RCA] [PMID: 29249464 DOI: 10.1016/j.stem.2017.11.001] [FullText] [Full Text(PDF)]
- 126 **He S**, Lei P, Kang W, Cheung P, Xu T, Mana M, Park CY, Wang H, Imada S, Russell JO, Wang J, Wang R, Zhou Z, Chetal K, Stas E, Mohad V, Bruun-Rasmussen P, Sadreyev RI, Hodin RA, Zhang Y, Breault DT, Camargo FD, Yilmaz ÖH, Fredberg JJ, Saeidi N. Stiffness Restricts the Stemness of the Intestinal Stem Cells and Skews Their Differentiation Toward Goblet Cells. *Gastroenterology* 2023; **164**: 1137–1151.e15 [RCA] [PMID: 36871599 DOI: 10.1053/j.gastro.2023.02.030] [FullText]
- 127 **Neurath MF**. New targets for mucosal healing and therapy in inflammatory bowel diseases. *Mucosal Immunol* 2014; **7**: 6–19 [RCA] [PMID: 24084775 DOI: 10.1038/mi.2013.73] [FullText]
- 128 **Salem GA**, Selby GB. Stem cell transplant in inflammatory bowel disease: a promising modality of treatment for a complicated disease course. *Stem Cell Investig* 2017; **4**: 95 [RCA] [PMID: 29270421 DOI: 10.21037/sci.2017.11.04] [FullText]
- 129 **Burt RK**, Craig RM, Milanetti F, Quigley K, Gozdzia P, Bucha J, Testori A, Halverson A, Verda L, de Villiers WJ, Jovanovic B, Oyama Y. Autologous nonmyeloablative hematopoietic stem cell transplantation in patients with severe anti-TNF refractory Crohn disease: long-term follow-up. *Blood* 2010; **116**: 6123–6132 [RCA] [PMID: 20837778 DOI: 10.1182/blood-2010-06-292391] [FullText]
- 130 **Hawkey CJ**, Allez M, Clark MM, Labopin M, Lindsay JO, Ricart E, Rogler G, Rovira M, Satsangi J, Danese S, Russell N, Gribben J, Johnson P, Larghero J, Thieblemont C, Ardizzone S, Dierickx D, Ibatci A, Littlewood T, Onida F, Schanz U, Vermeire S, Colombel JF, Jouet JP, Clark E, Saccardi R, Tyndall A, Travis S, Farge D. Autologous Hematopoietic Stem Cell Transplantation for Refractory Crohn Disease: A Randomized Clinical Trial. *JAMA* 2015; **314**: 2524–2534 [RCA] [PMID: 26670970 DOI: 10.1001/jama.2015.16700] [FullText]
- 131 **Jauregui-Amezaga A**, Rovira M, Marín P, Salas A, Pinó-Donnay S, Feu F, Elizalde JI, Fernández-Avilés F, Martínez C, Gutiérrez G, Rosiñol L, Carreras E, Urbano A, Lozano M, Cid J, Suárez-Lledó M, Mensa J, Rimola J, Rodríguez S, Masamunt MC, Comas D, Ruíz I, Ramírez-Morros A, Gallego M, Ordás I, Panés J, Ricart E. Improving safety of autologous haematopoietic stem cell transplantation in patients with

- Crohn's disease. *Gut* 2016; **65**: 1456-1462 [RCA] [PMID: 26585938 DOI: 10.1136/gutjnl-2015-309836] [FullText]
- 132 **López-García A**, Rovira M, Jauregui-Amezaga A, Marín P, Barastegui R, Salas A, Ribas V, Feu F, Elizalde JI, Fernández-Avilés F, Martínez C, Gutiérrez G, Rosiñol L, Carreras E, Urbano A, Lozano M, Cid J, Suárez-Lledó M, Masamunt MC, Comas D, Giner A, Gallego M, Alfaro I, Ordás I, Panés J, Ricart E. Autologous Haematopoietic Stem Cell Transplantation for Refractory Crohn's Disease: Efficacy in a Single-Centre Cohort. *J Crohns Colitis* 2017; **11**: 1161-1168 [RCA] [PMID: 28419282 DOI: 10.1093/ecco-jcc/jjx054] [FullText]
- 133 **Lashner BA**. Autologous hematopoietic stem cell transplantation for Crohn's disease: high risk for a high reward. *Inflamm Bowel Dis* 2005; **11**: 778-779 [RCA] [PMID: 16043994 DOI: 10.1097/01.mib.0000171286.88690.ec] [FullText]
- 134 **Ankrum JA**, Ong JF, Karp JM. Mesenchymal stem cells: immune evasive, not immune privileged. *Nat Biotechnol* 2014; **32**: 252-260 [RCA] [PMID: 24561556 DOI: 10.1038/nbt.2816] [FullText]
- 135 **Burdon TJ**, Paul A, Noiseux N, Prakash S, Shum-Tim D. Bone marrow stem cell derived paracrine factors for regenerative medicine: current perspectives and therapeutic potential. *Bone Marrow Res* 2011; **2011**: 207326 [RCA] [PMID: 22046556 DOI: 10.1155/2011/207326] [Full Text] [Full Text(PDF)]
- 136 **Liang J**, Zhang H, Wang D, Feng X, Wang H, Hua B, Liu B, Sun L. Allogeneic mesenchymal stem cell transplantation in seven patients with refractory inflammatory bowel disease. *Gut* 2012; **61**: 468-469 [RCA] [PMID: 21617158 DOI: 10.1136/gutjnl-2011-300083] [FullText]
- 137 **Ciccocioppo R**, Bernardo ME, Sgarella A, Maccario R, Avanzini MA, Ubezio C, Minelli A, Alvisi C, Vanoli A, Calliada F, Dionigi P, Perotti C, Locatelli F, Corazza GR. Autologous bone marrow-derived mesenchymal stromal cells in the treatment of fistulising Crohn's disease. *Gut* 2011; **60**: 788-798 [RCA] [PMID: 21257987 DOI: 10.1136/gut.2010.214841] [FullText]
- 138 **Lee WY**, Park KJ, Cho YB, Yoon SN, Song KH, Kim DS, Jung SH, Kim M, Yoo HW, Kim I, Ha H, Yu CS. Autologous adipose tissue-derived stem cells treatment demonstrated favorable and sustainable therapeutic effect for Crohn's fistula. *Stem Cells* 2013; **31**: 2575-2581 [RCA] [PMID: 23404825 DOI: 10.1002/stem.1357] [FullText]
- 139 **Panés J**, García-Olmo D, Van Assche G, Colombel JF, Reinisch W, Baumgart DC, Dignass A, Nachury M, Ferrante M, Kazemi-Shirazi L, Grimaud JC, de la Portilla F, Goldin E, Richard MP, Leselbaum A, Danese S; ADMIRE CD Study Group Collaborators. Expanded allogeneic adipose-derived mesenchymal stem cells (Cx601) for complex perianal fistulas in Crohn's disease: a phase 3 randomised, double-blind controlled trial. *Lancet* 2016; **388**: 1281-1290 [RCA] [PMID: 27477896 DOI: 10.1016/S0140-6736(16)31203-X] [FullText]
- 140 **Dietz AB**, Dozois EJ, Fletcher JG, Butler GW, Radel D, Lightner AL, Dave M, Friton J, Nair A, Camilleri ET, Dudakovic A, van Wijnen AJ, Faubion WA. Autologous Mesenchymal Stem Cells, Applied in a Bioabsorbable Matrix, for Treatment of Perianal Fistulas in Patients With Crohn's Disease. *Gastroenterology* 2017; **153**: 59-62.e2 [RCA] [PMID: 28400193 DOI: 10.1053/j.gastro.2017.04.001] [FullText]
- 141 **Yang S**, Liang X, Song J, Li C, Liu A, Luo Y, Ma H, Tan Y, Zhang X. A novel therapeutic approach for inflammatory bowel disease by exosomes derived from human umbilical cord mesenchymal stem cells to repair intestinal barrier *via* TSG-6. *Stem Cell Res Ther* 2021; **12**: 315 [RCA] [PMID: 34051868 DOI: 10.1186/s13287-021-02404-8] [FullText] [Full Text(PDF)]
- 142 **Liu H**, Liang Z, Wang F, Zhou C, Zheng X, Hu T, He X, Wu X, Lan P. Exosomes from mesenchymal stromal cells reduce murine colonic inflammation *via* a macrophage-dependent mechanism. *JCI Insight* 2019; **4**: e131273 [RCA] [PMID: 31689240 DOI: 10.1172/jci.insight.131273] [FullText]
- 143 **Dedhia PH**, Bertaux-Skeirik N, Zavros Y, Spence JR. Organoid Models of Human Gastrointestinal Development and Disease. *Gastroenterology* 2016; **150**: 1098-1112 [RCA] [PMID: 26774180 DOI: 10.1053/j.gastro.2015.12.042] [FullText]
- 144 **Yui S**, Nakamura T, Sato T, Nemoto Y, Mizutani T, Zheng X, Ichinose S, Nagaishi T, Okamoto R, Tsuchiya K, Clevers H, Watanabe M. Functional engraftment of colon epithelium expanded *in vitro* from a single adult Lgr5⁺ stem cell. *Nat Med* 2012; **18**: 618-623 [RCA] [PMID: 22406745 DOI: 10.1038/nm.2695] [FullText]
- 145 **Fukuda M**, Mizutani T, Mochizuki W, Matsumoto T, Nozaki K, Sakamaki Y, Ichinose S, Okada Y, Tanaka T, Watanabe M, Nakamura T. Small intestinal stem cell identity is maintained with functional Paneth cells in heterotopically grafted epithelium onto the colon. *Genes Dev* 2014; **28**: 1752-1757 [RCA] [PMID: 25128495 DOI: 10.1101/gad.245233.114] [FullText] [Full Text(PDF)]
- 146 **Sugimoto S**, Ohta Y, Fujii M, Matano M, Shimokawa M, Nanki K, Date S, Nishikori S, Nakazato Y, Nakamura T, Kanai T, Sato T. Reconstruction of the Human Colon Epithelium *In Vivo*. *Cell Stem Cell* 2018; **22**: 171-176.e5 [RCA] [PMID: 29290616 DOI: 10.1016/j.stem.2017.11.012] [FullText]
- 147 **Yang L**, Wang X, Zhou X, Chen H, Song S, Deng L, Yao Y, Yin X. A tunable human intestinal organoid system achieves controlled balance between self-renewal and differentiation. *Nat Commun* 2025; **16**: 315 [RCA] [PMID: 39747097 DOI: 10.1038/s41467-024-55567-2] [FullText] [Full Text(PDF)]
- 148 **Recaldin T**, Steinacher L, Gjeta B, Harter MF, Adam L, Kromer K, Mendes MP, Bellavista M, Nikolaev M, Lazzaroni G, Krese R, Kilik U, Popovic D, Stoll B, Gerard R, Bscheider M, Bickle M, Cabon L, Camp JG, Gjorevski N. Human organoids with an autologous tissue-resident immune compartment. *Nature* 2024; **633**: 165-173 [RCA] [PMID: 39143209 DOI: 10.1038/s41586-024-07791-5] [FullText]
- 149 **Okamoto R**, Shimizu H, Suzuki K, Kawamoto A, Takahashi J, Kawai M, Nagata S, Hiraguri Y, Takeoka S, Sugihara HY, Yui S, Watanabe M. Organoid-based regenerative medicine for inflammatory bowel disease. *Regen Ther* 2020; **13**: 1-6 [RCA] [PMID: 31970266 DOI: 10.1016/j.reth.2019.11.004] [FullText] [Full Text(PDF)]
- 150 **Sens J**, Hoffmann D, Lange L, Vollmer Barbosa P, Morgan M, Falk CS, Schambach A. Knockout-Induced Pluripotent Stem Cells for Disease and Therapy Modeling of IL-10-Associated Primary Immunodeficiencies. *Hum Gene Ther* 2021; **32**: 77-95 [RCA] [PMID: 33023317 DOI: 10.1089/hum.2020.235] [FullText]
- 151 **Stidham RW**, Takenaka K. Artificial Intelligence for Disease Assessment in Inflammatory Bowel Disease: How Will it Change Our Practice? *Gastroenterology* 2022; **162**: 1493-1506 [RCA] [PMID: 34995537 DOI: 10.1053/j.gastro.2021.12.238] [FullText]
- 152 **Iacucci M**, Santacroce G, Zammarchi I, Maeda Y, Del Amor R, Meseguer P, Kolawole BB, Chaudhari U, Di Sabatino A, Danese S, Mori Y, Grisan E, Naranjo V, Ghosh S. Artificial intelligence and endo-histo-omics: new dimensions of precision endoscopy and histology in inflammatory bowel disease. *Lancet Gastroenterol Hepatol* 2024; **9**: 758-772 [RCA] [PMID: 38759661 DOI: 10.1016/S2468-1253(24)00053-0] [FullText]



Published by **Baishideng Publishing Group Inc**
7041 Koll Center Parkway, Suite 160, Pleasanton, CA 94566, USA

Telephone: +1-925-3991568

E-mail: office@baishideng.com

Help Desk: <https://www.f6publishing.com/helpdesk>

<https://www.wjgnet.com>

