

World Journal of *Gastrointestinal Oncology*

Monthly Volume 17 Number 4 April 15, 2025



EDITORIAL

Ren MJ, Zhang ZL, Tian C, Liu GQ, Zhang CS, Yu HB, Xin Q. Importance of early detection in multiple endocrine neoplasia type 1: Clinical insights and future directions. *World J Gastrointest Oncol* 2025; 17(4): 100013 [DOI: 10.4251/wjgo.v17.i4.100013]

Kishikawa H, Nishida J. Gastric cancer in patients with *Helicobacter pylori*-negative autoimmune gastritis. *World J Gastrointest Oncol* 2025; 17(4): 101661 [DOI: 10.4251/wjgo.v17.i4.101661]

Tawheed A, Ismail A, El-Kassas M, El-Fouly A, Madkour A. Endoscopic resection of gastrointestinal tumors: Training levels and professional roles explored. *World J Gastrointest Oncol* 2025; 17(4): 101832 [DOI: 10.4251/wjgo.v17.i4.101832]

Ye XX, Qu HH, Yang C, Teng WJ, Chen YP, Lin JM, Wang XB. Precision medicine in the prediction of metachronous liver metastasis in rectal cancer: Applications and challenges. *World J Gastrointest Oncol* 2025; 17(4): 102469 [DOI: 10.4251/wjgo.v17.i4.102469]

Sun YF, Cao XK, Wei Q, Gao YH. Potential biomarkers for the prognosis of gastrointestinal stromal tumors. *World J Gastrointest Oncol* 2025; 17(4): 102831 [DOI: 10.4251/wjgo.v17.i4.102831]

Lamprecht CB, Kashuv T, Lucke-Wold B. Understanding metastatic patterns in gastric cancer: Insights from lymph node distribution and pathology. *World J Gastrointest Oncol* 2025; 17(4): 103709 [DOI: 10.4251/wjgo.v17.i4.103709]

REVIEW

Zhang Y, Yue NN, Chen LY, Tian CM, Yao J, Wang LS, Liang YJ, Wei DR, Ma HL, Li DF. Exosomal biomarkers: A novel frontier in the diagnosis of gastrointestinal cancers. *World J Gastrointest Oncol* 2025; 17(4): 103591 [DOI: 10.4251/wjgo.v17.i4.103591]

ORIGINAL ARTICLE**Case Control Study**

Liu X, Zhang S, Qiu H, Xie ZQ, Tang WF, Chen Y, Wei X. Investigation of high-mobility group box 1 variants with lymph node status and colorectal cancer risk. *World J Gastrointest Oncol* 2025; 17(4): 102584 [DOI: 10.4251/wjgo.v17.i4.102584]

Retrospective Cohort Study

Zhao CH, Liu H, Pan T, Xiang ZW, Mu LW, Luo JY, Zhou CR, Li MA, Liu MM, Yan HZ, Huang MS. Idarubicin-transarterial chemoembolization combined with gemcitabine plus cisplatin for unresectable intrahepatic cholangiocarcinoma. *World J Gastrointest Oncol* 2025; 17(4): 103776 [DOI: 10.4251/wjgo.v17.i4.103776]

Dolu S, Cengiz MB, Döngelli H, Gürbüz M, Arayıcı ME. Importance of hematological and inflammatory markers in the localization of gastric cancer. *World J Gastrointest Oncol* 2025; 17(4): 104455 [DOI: 10.4251/wjgo.v17.i4.104455]

Retrospective Study

Potievskiy MB, Petrov LO, Ivanov SA, Sokolov PV, Trifanov VS, Grishin NA, Moshurov RI, Shegai PV, Kaprin AD. Machine learning for modeling and identifying risk factors of pancreatic fistula. *World J Gastrointest Oncol* 2025; 17(4): 100089 [DOI: [10.4251/wjgo.v17.i4.100089](https://doi.org/10.4251/wjgo.v17.i4.100089)]

Lu JL, Cheng Y, Xu ZL, Qian GX, Wei MT, Jia WD. Immune checkpoint inhibitors plus anti-angiogenesis in patients with resected high-risk hepatitis B virus-associated hepatocellular carcinoma. *World J Gastrointest Oncol* 2025; 17(4): 101371 [DOI: [10.4251/wjgo.v17.i4.101371](https://doi.org/10.4251/wjgo.v17.i4.101371)]

Wang SY, Dong XT, Yuan Z, Jin LX, Gao WF, Han YK, Ni KM, Liu ZC, Wang JY, Wei XM, Su XM, Peng X, Zhang CZ. Factors associated with false fecal immunochemical test results in colorectal cancer screening. *World J Gastrointest Oncol* 2025; 17(4): 101487 [DOI: [10.4251/wjgo.v17.i4.101487](https://doi.org/10.4251/wjgo.v17.i4.101487)]

Fei J, Qi LW, Liu Y, Shu M, Mo WQ. Comparing transarterial chemoembolization alone to combined transarterial chemoembolization and radiofrequency ablation in primary hepatocellular carcinoma treatment. *World J Gastrointest Oncol* 2025; 17(4): 102038 [DOI: [10.4251/wjgo.v17.i4.102038](https://doi.org/10.4251/wjgo.v17.i4.102038)]

Mo YK, Chen XP, Hong LL, Hu YR, Lin DY, Xie LC, Dai ZZ. Gastric schwannoma: Computed tomography and perigastric lymph node characteristics. *World J Gastrointest Oncol* 2025; 17(4): 102085 [DOI: [10.4251/wjgo.v17.i4.102085](https://doi.org/10.4251/wjgo.v17.i4.102085)]

Zhang Y, Zhu WL, Wu M, Gao TY, Hu HX, Xu ZY. Using bioinformatics methods to elucidate fatty acid-binding protein 4 as a potential biomarker for colon adenocarcinoma. *World J Gastrointest Oncol* 2025; 17(4): 103113 [DOI: [10.4251/wjgo.v17.i4.103113](https://doi.org/10.4251/wjgo.v17.i4.103113)]

Guo S, Liu FF, Yuan L, Ma WQ, Er LM, Zhao Q. Subclassification scheme for adenocarcinomas of the esophago-gastric junction and prognostic analysis based on clinicopathological features. *World J Gastrointest Oncol* 2025; 17(4): 103455 [DOI: [10.4251/wjgo.v17.i4.103455](https://doi.org/10.4251/wjgo.v17.i4.103455)]

Rong Y, Liu Y, Tang SY, Ju XJ, Li H. Caregiver-involved nutritional support and mindfulness training for patients with gastrointestinal cancer: Effects on malnutrition risk and mood. *World J Gastrointest Oncol* 2025; 17(4): 103515 [DOI: [10.4251/wjgo.v17.i4.103515](https://doi.org/10.4251/wjgo.v17.i4.103515)]

Liang LW, Luo RH, Huang ZL, Tang LN. Clinical observation of nivolumab combined with cabozantinib in the treatment of advanced hepatocellular carcinoma. *World J Gastrointest Oncol* 2025; 17(4): 103631 [DOI: [10.4251/wjgo.v17.i4.103631](https://doi.org/10.4251/wjgo.v17.i4.103631)]

Yu J, Liu QC, Lu SY, Wang S, Zhang H. Detecting plasma SHOX2, HOXA9, SEPTIN9, and RASSF1A methylation and circulating cancer cells for cholangiocarcinoma clinical diagnosis and monitoring. *World J Gastrointest Oncol* 2025; 17(4): 104253 [DOI: [10.4251/wjgo.v17.i4.104253](https://doi.org/10.4251/wjgo.v17.i4.104253)]

Clinical Trials Study

Liu Y, Liu HG, Zhao C. Intraperitoneal perfusion of endostatin improves the effectiveness and prolongs the prognosis of patients with gastric cancer. *World J Gastrointest Oncol* 2025; 17(4): 103131 [DOI: [10.4251/wjgo.v17.i4.103131](https://doi.org/10.4251/wjgo.v17.i4.103131)]

Sun MH, Shen HZ, Jin HB, Yang JF, Zhang XF. Efficacy and safety of early pancreatic duct stenting for unresectable pancreatic cancer: A randomized controlled trial. *World J Gastrointest Oncol* 2025; 17(4): 103311 [DOI: [10.4251/wjgo.v17.i4.103311](https://doi.org/10.4251/wjgo.v17.i4.103311)]

Zhang SH, Li W, Chen XY, Nie LL. Combining immune checkpoint inhibitors with standard treatment regimens in advanced human epidermal growth factor receptor-2 positive gastric cancer patients. *World J Gastrointest Oncol* 2025; 17(4): 103855 [DOI: [10.4251/wjgo.v17.i4.103855](https://doi.org/10.4251/wjgo.v17.i4.103855)]

Observational Study

Suzuki M, Sakurazawa N, Hagiwara N, Kogo H, Haruna T, Ohashi R, Yoshida H. Usefulness of shear-wave elastography for detection of lymph node metastasis in esophageal and gastric cancer. *World J Gastrointest Oncol* 2025; 17(4): 101925 [DOI: [10.4251/wjgo.v17.i4.101925](https://doi.org/10.4251/wjgo.v17.i4.101925)]

Prospective Study

Kekez D, Prejac J, Adžić G, Librenjak N, Goršić I, Jonjić D, Krznarić Ž, Augustin G, Pleština S. Phase angle as a prognostic biomarker in metastatic colorectal cancer: A prospective trial. *World J Gastrointest Oncol* 2025; 17(4): 103029 [DOI: [10.4251/wjgo.v17.i4.103029](https://doi.org/10.4251/wjgo.v17.i4.103029)]

Wu XL, Li XS, Cheng JH, Deng LX, Hu ZH, Qi J, Lei HK. Oesophageal cancer-specific mortality risk and public health insurance: Prospective cohort study from China. *World J Gastrointest Oncol* 2025; 17(4): 103629 [DOI: [10.4251/wjgo.v17.i4.103629](https://doi.org/10.4251/wjgo.v17.i4.103629)]

Basic Study

Lv XL, Peng QL, Wang XP, Fu ZC, Cao JP, Wang J, Wang LL, Jiao Y. Snail family transcriptional repressor 1 radiosensitizes esophageal cancer *via* epithelial-mesenchymal transition signaling: From bioinformatics to integrated study. *World J Gastrointest Oncol* 2025; 17(4): 97644 [DOI: [10.4251/wjgo.v17.i4.97644](https://doi.org/10.4251/wjgo.v17.i4.97644)]

Tian HP, Xiao ZX, Su BW, Li YX, Peng H, Meng CY. Impact of SLC16A8 on tumor microenvironment and angiogenesis in colorectal cancer: New therapeutic target insights. *World J Gastrointest Oncol* 2025; 17(4): 99188 [DOI: [10.4251/wjgo.v17.i4.99188](https://doi.org/10.4251/wjgo.v17.i4.99188)]

Shantha Kumara HMC, Addison P, Yan XH, Sharma AR, Mitra N, Angamma HN, Hedjar Y, Chen YR, Cekic V, Richard WL. Plasma extracellular cold inducible RNA-binding protein levels are elevated for 1 month post-colectomy which may promote metastases. *World J Gastrointest Oncol* 2025; 17(4): 100678 [DOI: [10.4251/wjgo.v17.i4.100678](https://doi.org/10.4251/wjgo.v17.i4.100678)]

Ji PX, Zhang P, Zhou HL, Yu H, Fu Y. MEX3A promotes cell proliferation by regulating the RORA/ β -catenin pathway in hepatocellular carcinoma. *World J Gastrointest Oncol* 2025; 17(4): 102084 [DOI: [10.4251/wjgo.v17.i4.102084](https://doi.org/10.4251/wjgo.v17.i4.102084)]

Xin MJ, Yuan Y. Centromere protein A knockdown inhibits rectal cancer through O6-methylguanine DNA methyltransferase/protein tyrosine phosphatase nonreceptor type 4 axis. *World J Gastrointest Oncol* 2025; 17(4): 102619 [DOI: [10.4251/wjgo.v17.i4.102619](https://doi.org/10.4251/wjgo.v17.i4.102619)]

Lu XF, Zhang HW, Chang X, Guo YZ. F-box protein 22: A prognostic biomarker for colon cancer associated with immune infiltration and chemotherapy resistance. *World J Gastrointest Oncol* 2025; 17(4): 102913 [DOI: [10.4251/wjgo.v17.i4.102913](https://doi.org/10.4251/wjgo.v17.i4.102913)]

Meng FD, Jia SM, Ma YB, Du YH, Liu WJ, Yang Y, Yuan L, Nan Y. Identification of key hub genes associated with anti-gastric cancer effects of lotus plumule based on machine learning algorithms. *World J Gastrointest Oncol* 2025; 17(4): 103048 [DOI: [10.4251/wjgo.v17.i4.103048](https://doi.org/10.4251/wjgo.v17.i4.103048)]

Ma FC, Zhang GL, Chi BT, Tang YL, Peng W, Liu AQ, Chen G, Gao JB, Wei DM, Ge LY. Blood-based machine learning classifiers for early diagnosis of gastric cancer *via* multiple miRNAs. *World J Gastrointest Oncol* 2025; 17(4): 103679 [DOI: [10.4251/wjgo.v17.i4.103679](https://doi.org/10.4251/wjgo.v17.i4.103679)]

Xiao ZW, Zeng YC, Ji LT, Yuan JT, Li L. Nitric oxide synthase 1 inhibits the progression of esophageal cancer through interacting with nitric oxide synthase 1 adaptor protein. *World J Gastrointest Oncol* 2025; 17(4): 103843 [DOI: [10.4251/wjgo.v17.i4.103843](https://doi.org/10.4251/wjgo.v17.i4.103843)]

Hou YX, Ren W, He QQ, Huang LY, Gao TH, Li H. Tetramethylpyrazine induces reactive oxygen species-based mitochondria-mediated apoptosis in colon cancer cells. *World J Gastrointest Oncol* 2025; 17(4): 104922 [DOI: [10.4251/wjgo.v17.i4.104922](https://doi.org/10.4251/wjgo.v17.i4.104922)]

SCIENTOMETRICS

Zhang YR, Zhu HR, Li HR, Cheng YL, Yang SH, Sun SL, Wang Z. Trends in nanomedicine for colorectal cancer treatment: Bibliometric and visualization analysis (2010-2024). *World J Gastrointest Oncol* 2025; 17(4): 102438 [DOI: [10.4251/wjgo.v17.i4.102438](https://doi.org/10.4251/wjgo.v17.i4.102438)]

CASE REPORT

Yi AQ, Xie GH. Pancreatic neuroendocrine neoplasms coexisting with biliary intraductal papillary mucinous neoplasm: A case report and review of literature. *World J Gastrointest Oncol* 2025; 17(4): 100497 [DOI: [10.4251/wjgo.v17.i4.100497](https://doi.org/10.4251/wjgo.v17.i4.100497)]

Tang XW, Zhou Y. Signet ring cell carcinoma of the appendix and terminal ileum: A case report. *World J Gastrointest Oncol* 2025; 17(4): 100526 [DOI: [10.4251/wjgo.v17.i4.100526](https://doi.org/10.4251/wjgo.v17.i4.100526)]

Tachibana S, Moriichi K, Takahashi K, Sato M, Kobayashi Y, Sugiyama Y, Sasaki T, Sakatani A, Ando K, Ueno N, Kashima S, Tanabe H, Fujiya M. Curative endoscopic submucosal dissection for esophageal squamous cell carcinoma after chemoradiotherapy for pharyngeal cancer: A case report. *World J Gastrointest Oncol* 2025; 17(4): 101123 [DOI: [10.4251/wjgo.v17.i4.101123](https://doi.org/10.4251/wjgo.v17.i4.101123)]

Li XL, Li M, Yang H, Tian J, Shi ZW, Wang LZ, Song K. Chronic myelogenous leukemia secondary to colon cancer: A case report. *World J Gastrointest Oncol* 2025; 17(4): 102021 [DOI: [10.4251/wjgo.v17.i4.102021](https://doi.org/10.4251/wjgo.v17.i4.102021)]

Du XY, Xia RJ, Shen LW, Ma JG, Yao WQ, Xu W, Lin ZP, Ma LB, Niu GQ, Fan RF, Xu SM, Yan L. Quadruple therapy with immunotherapy and chemotherapy as first-line conversion treatment for unresectable advanced gastric adenocarcinoma: A case report. *World J Gastrointest Oncol* 2025; 17(4): 102258 [DOI: [10.4251/wjgo.v17.i4.102258](https://doi.org/10.4251/wjgo.v17.i4.102258)]

Xiao X, Wang QW, Zhou ZY, Wang LS, Huang P. Precision treatment for human epidermal growth factor receptor 2-amplified advanced rectal cancer: A case report. *World J Gastrointest Oncol* 2025; 17(4): 102690 [DOI: [10.4251/wjgo.v17.i4.102690](https://doi.org/10.4251/wjgo.v17.i4.102690)]

Zhang XY, Li C, Lin J, Zhou Y, Shi RZ, Wang ZY, Jiang HB, Wang YY. Intestinal obstruction caused by early stage primary ileum adenocarcinoma: A case report and review of literature. *World J Gastrointest Oncol* 2025; 17(4): 104919 [DOI: [10.4251/wjgo.v17.i4.104919](https://doi.org/10.4251/wjgo.v17.i4.104919)]

LETTER TO THE EDITOR

Rojas A, González I, Morales MA. Natural products and cancer: The urgent need to bridge the gap between preclinical and clinical research. *World J Gastrointest Oncol* 2025; 17(4): 100484 [DOI: [10.4251/wjgo.v17.i4.100484](https://doi.org/10.4251/wjgo.v17.i4.100484)]

Miao YR, Yang XJ. Hepatocellular carcinoma resistance to tyrosine kinase inhibitors: Current status and perspectives. *World J Gastrointest Oncol* 2025; 17(4): 101528 [DOI: [10.4251/wjgo.v17.i4.101528](https://doi.org/10.4251/wjgo.v17.i4.101528)]

Krishnan A. Radiomics and machine learning for predicting metachronous liver metastasis in rectal cancer. *World J Gastrointest Oncol* 2025; 17(4): 102324 [DOI: [10.4251/wjgo.v17.i4.102324](https://doi.org/10.4251/wjgo.v17.i4.102324)]

Sundararaju U, Rajakumar HK. Prognostic value of neutrophil-to-lymphocyte ratio in gastric cancer: Enhancing clinical relevance. *World J Gastrointest Oncol* 2025; 17(4): 103128 [DOI: [10.4251/wjgo.v17.i4.103128](https://doi.org/10.4251/wjgo.v17.i4.103128)]

Jeong KY. How is single-cell RNA sequencing contributing to the advancement of cancer therapeutics? *World J Gastrointest Oncol* 2025; 17(4): 103480 [DOI: [10.4251/wjgo.v17.i4.103480](https://doi.org/10.4251/wjgo.v17.i4.103480)]

D'Acapito F, Framarini M, Di Pietrantonio D, Ercolani G. Personalized treatment selection in colorectal cancer with peritoneal metastasis: Do we need statistically validated indicators or cultural shift? *World J Gastrointest Oncol* 2025; 17(4): 104110 [DOI: [10.4251/wjgo.v17.i4.104110](https://doi.org/10.4251/wjgo.v17.i4.104110)]

ABOUT COVER

Peer Review of *World Journal of Gastrointestinal Oncology*, Jihwan Ko, MD, FRSPH, Director, Baekyang Jeil Internal Medicine Clinic, Busan 47181, South Korea. jihwanko65@gmail.com

AIMS AND SCOPE

The primary aim of *World Journal of Gastrointestinal Oncology (WJGO, World J Gastrointest Oncol)* is to provide scholars and readers from various fields of gastrointestinal oncology with a platform to publish high-quality basic and clinical research articles and communicate their research findings online.

WJGO mainly publishes articles reporting research results and findings obtained in the field of gastrointestinal oncology and covering a wide range of topics including liver cell adenoma, gastric neoplasms, appendiceal neoplasms, biliary tract neoplasms, hepatocellular carcinoma, pancreatic carcinoma, cecal neoplasms, colonic neoplasms, colorectal neoplasms, duodenal neoplasms, esophageal neoplasms, gallbladder neoplasms, etc.

INDEXING/ABSTRACTING

The *WJGO* is now abstracted and indexed in PubMed, PubMed Central, Science Citation Index Expanded (SCIE, also known as SciSearch®), Journal Citation Reports/Science Edition, Scopus, Reference Citation Analysis, China Science and Technology Journal Database, and Superstar Journals Database. The 2024 edition of Journal Citation Reports® cites the 2023 journal impact factor (JIF) for *WJGO* as 2.5; JIF without journal self cites: 2.5; 5-year JIF: 2.8; JIF Rank: 72/143 in gastroenterology and hepatology; JIF Quartile: Q3; and 5-year JIF Quartile: Q2. The *WJGO*'s CiteScore for 2023 is 4.2 and Scopus CiteScore rank 2023: Gastroenterology is 80/167; Oncology is 196/404.

RESPONSIBLE EDITORS FOR THIS ISSUE

Production Editor: *Si Zhao*; Production Department Director: *Xiang Li*; Cover Editor: *Jia-Ru Fan*.

NAME OF JOURNAL

World Journal of Gastrointestinal Oncology

ISSN

ISSN 1948-5204 (online)

LAUNCH DATE

February 15, 2009

FREQUENCY

Monthly

EDITORS-IN-CHIEF

Monjur Ahmed

EDITORIAL BOARD MEMBERS

<https://www.wjgnet.com/1948-5204/editorialboard.htm>

PUBLICATION DATE

April 15, 2025

COPYRIGHT

© 2025 Baishideng Publishing Group Inc

INSTRUCTIONS TO AUTHORS

<https://www.wjgnet.com/bpg/gerinfo/204>

GUIDELINES FOR ETHICS DOCUMENTS

<https://www.wjgnet.com/bpg/GerInfo/287>

GUIDELINES FOR NON-NATIVE SPEAKERS OF ENGLISH

<https://www.wjgnet.com/bpg/gerinfo/240>

PUBLICATION ETHICS

<https://www.wjgnet.com/bpg/GerInfo/288>

PUBLICATION MISCONDUCT

<https://www.wjgnet.com/bpg/gerinfo/208>

ARTICLE PROCESSING CHARGE

<https://www.wjgnet.com/bpg/gerinfo/242>

STEPS FOR SUBMITTING MANUSCRIPTS

<https://www.wjgnet.com/bpg/GerInfo/239>

ONLINE SUBMISSION

<https://www.f6publishing.com>



Basic Study

Blood-based machine learning classifiers for early diagnosis of gastric cancer via multiple miRNAs

Fu-Chao Ma, Guan-Lan Zhang, Bang-Teng Chi, Yu-Lu Tang, Wei Peng, Ai-Qun Liu, Gang Chen, Jin-Biao Gao, Dan-Ming Wei, Lian-Ying Ge

Specialty type: Oncology

Provenance and peer review:

Unsolicited article; Externally peer reviewed.

Peer-review model: Single blind

Peer-review report's classification

Scientific Quality: Grade C, Grade C

Novelty: Grade B, Grade B

Creativity or Innovation: Grade B, Grade B

Scientific Significance: Grade B, Grade B

P-Reviewer: Liu Y

Received: November 27, 2024

Revised: January 16, 2025

Accepted: February 11, 2025

Published online: April 15, 2025

Processing time: 119 Days and 2.2 Hours



Fu-Chao Ma, Wei Peng, Department of Medical Oncology, The First Affiliated Hospital of Guangxi Medical University, Nanning 530021, Guangxi Zhuang Autonomous Region, China

Guan-Lan Zhang, Bang-Teng Chi, Yu-Lu Tang, Gang Chen, Jin-Biao Gao, Dan-Ming Wei, Department of Pathology, The First Affiliated Hospital of Guangxi Medical University, Nanning 530021, Guangxi Zhuang Autonomous Region, China

Ai-Qun Liu, Lian-Ying Ge, Department of Endoscopy, Guangxi Medical University Cancer Hospital, Nanning 530021, Guangxi Zhuang Autonomous Region, China

Co-first authors: Fu-Chao Ma and Guan-Lan Zhang.

Co-corresponding authors: Dan-Ming Wei and Lian-Ying Ge.

Corresponding author: Lian-Ying Ge, Department of Endoscopy, Guangxi Medical University Cancer Hospital, No. 71 Hedi Road, Nanning 530021, Guangxi Zhuang Autonomous Region, China. gxgly@hotmail.com

Abstract

BACKGROUND

Early screening methods for gastric cancer (GC) are lacking; therefore, the disease often progresses to an advanced stage when patients first start to exhibit typical symptoms. Endoscopy and pathological biopsy remain the primary diagnostic approaches, but they are invasive and not yet widely applicable for early population screening. miRNA is a highly conserved type of RNA that exists stably in plasma. Dysfunction of miRNA is linked to tumorigenesis and progression, indicating that individual miRNAs or combinations of multiple miRNAs may serve as potential biomarkers.

AIM

To identify effective plasma miRNA biomarkers and investigate the clinical value of combining multiple miRNAs for early detection of GC.

METHODS

Plasma samples from multiple centres were collected. Differentially expressed genes among healthy controls, early-stage GC patients, and advanced-stage GC patients were identified through small RNA sequencing (sRNA-seq) and

validated *via* real-time quantitative reverse transcription polymerase chain reaction (RT-qPCR). A Wilcoxon signed-rank test was used to investigate the differences in miRNAs. Sequencing datasets of GC serum samples were retrieved from the Gene Expression Omnibus (GEO), ArrayExpress, and The Cancer Genome Atlas databases, and a multilayer perceptron-artificial neural network (MLP-ANN) model was constructed for the key risk miRNAs. The pROC package was used to assess the discriminatory efficacy of the model.

RESULTS

Plasma samples of 107 normal, 71 early GC and 97 advanced GC patients were obtained from three centres, and serum samples of 8443 normal and 1583 GC patients were obtained from the GEO database. The sRNA-seq and RT-qPCR experiments revealed that miR-452-5p, miR-5010-5p, miR-27b-5p, miR-5189-5p, miR-552-5p and miR-199b-5p were significantly increased in early GC patients compared with healthy controls and in advanced GC patients compared with early GC patients ($P < 0.05$). An MLP-ANN model was constructed for the six key miRNAs. The area under the curve (AUC) within the training cohort was 0.983 [95% confidence interval (CI): 0.980–0.986]. In the two validation cohorts, the AUCs were 0.995 (95%CI: 0.987 to nearly 1.000) and 0.979 (95%CI: 0.972–0.986), respectively.

CONCLUSION

Potential miRNA biomarkers, including miR-452-5p, miR-5010-5p, miR-27b-5p, miR-5189-5p, miR-552-5p and miR-199b-5p, were identified. A GC classifier based on these miRNAs was developed, benefiting early detection and population screening.

Key Words: Gastric cancer; miRNA; Biological marker; Machine learning; Serum

©The Author(s) 2025. Published by Baishideng Publishing Group Inc. All rights reserved.

Core Tip: This was an in-house small RNA sequencing analysis of five healthy, five early gastric cancer (GC) and five advanced GC plasma samples, and the top 15 differentially expressed genes were verified in 275 plasma samples *via* real-time quantitative reverse transcription polymerase chain reaction. Six key miRNAs, miR-452-5p, miR-5010-5p, miR-27b-5p, miR-5189-5p, miR-552-5p and miR-199b-5p, were ultimately identified. A multilayer perceptron-artificial neural network classifier incorporating these six miRNAs was innovatively constructed based on 10 026 serum samples *via* machine learning techniques and is anticipated to become a novel biomarker for GC.

Citation: Ma FC, Zhang GL, Chi BT, Tang YL, Peng W, Liu AQ, Chen G, Gao JB, Wei DM, Ge LY. Blood-based machine learning classifiers for early diagnosis of gastric cancer *via* multiple miRNAs. *World J Gastrointest Oncol* 2025; 17(4): 103679

URL: <https://www.wjgnet.com/1948-5204/full/v17/i4/103679.htm>

DOI: <https://dx.doi.org/10.4251/wjgo.v17.i4.103679>

INTRODUCTION

Gastric cancer (GC), which originates from the gastric mucosa, is one of the most aggressive neoplasms of the digestive system and ranks fifth worldwide in both incidence and mortality[1]. The hazard factors for GC include infection with *Helicobacter pylori*, older age, a diet high in salt, unhealthy eating habits, gene mutations and psychological factors; all of which can lead to a high incidence rate. The absence of early screening techniques often contributes to GC progressing to an advanced stage when patients exhibit the typical symptoms, which include indigestion, anorexia, early satiety, abdominal pain and weight loss[2]. Currently, endoscopy and pathological biopsy remain the primary diagnostic approaches because of their ability to offer high diagnostic accuracy. However, these methods are invasive and not widely applicable for early population screening. With advances in molecular biology methods, the current biomarkers for GC, including carcinoembryonic antigen, carbohydrate antigen (CA) 199 and CA125, have increasingly been applied during medical procedures[3] because they offer more convenient, rapid and minimally invasive alternatives than traditional endoscopic biopsy. However, the specificity of existing serum biomarkers for GC is modest, so the search for efficient biomolecular indicators will help improve early detection rates.

miRNAs are a category of noncoding RNAs with single-stranded structures involved in regulating gene expression in different types of tumours and play roles as oncogenes or tumour suppressors *via* posttranscriptional regulatory mechanisms[4]. Studies have shown that miRNAs represent a category of highly conserved RNA molecules that remain stable in plasma. The dysregulation of these genes is closely associated with tumorigenesis and tumour progression[5]. Therefore, plasma-derived miRNAs can accurately reflect cellular changes during tumour progression, making them promising candidate biomarkers for early diagnosis. For example, a diagnostic kit based on seven miRNAs has already been integrated into guidelines as a haematological biomolecular marker to assist in the early diagnosis of hepatocellular carcinoma (86.1% sensitivity, 76.8% specificity)[6,7]. Research on GC has revealed that aberrant expression of either single or multiple miRNAs is related to clinicopathological features and patient prognosis. For example, miR-10 is overex-

pressed in GC and is positively correlated with tumour dimensions, the extent of invasion and lymph node metastasis[8]. Upregulation of miR-142-5p, miR-20b, miR-214, miR-150 and miR-375 or downregulation of miR-125-5p, miR-451, let-7g and miR-433 are linked to unfavourable outcomes in patients with GC[9]. Additionally, the integration of seven miRNAs (miR-126, miR-10b, miR-30a-5p, miR-21, miR-223, let-7a and miR-338) can predict either overall survival or recurrence-free survival in GC patients[10]. Despite extensive research on miRNAs as biomarkers for GC, no established miRNA diagnostic kit for early GC detection is currently available in clinical practice. Therefore, investigating the molecular characteristics and efficient miRNA markers is essential for GC, potentially improving the early diagnosis and screening opportunities for GC.

In the past 10 years, artificial intelligence (AI) has been gradually developed and practiced in various clinical tasks, including detection, diagnosis, classification and prognosis of early tumours. AI is an algorithm programme that identifies the relationships between input and output variables through training. These programmes include machine learning and deep learning techniques[11]. To simulate the structure and function of the biological nervous system, an artificial neural network (ANN) is a mathematical approach used for deep learning. Common ANN algorithms include multilayer perceptron (MLP), recurrent neural networks, and convolutional neural networks[12]. Compared with traditional mathematical models, ANNs demonstrate superior nonlinear fitting ability for complex relationships between independent variables and outcomes[13], hence improving their applicability in medical practice. In this study, the ANNs approach was utilized to investigate the predictive significance of combining multiple miRNAs for GC.

The objective of the present study was to identify differentially expressed miRNAs through the collection of plasma samples from healthy controls, early GC patients and advanced GC patients and to analyse the results *via* small RNA sequencing (sRNA-seq) and real-time quantitative reverse transcription polymerase chain reaction (RT-qPCR). A classifier utilizing an MLP-ANN approach was constructed for the critical differentially expressed miRNAs and validated with external datasets. This model investigated the clinical significance of a serum multi-miRNA classifier for early GC.

MATERIALS AND METHODS

Data collection

Participants opportunistically screened for untreated early GC were selected from three centres between January 2021 and December 2023: Guangxi Medical University Cancer Hospital, Guilin People's Hospital and Youjiang Medical University Affiliated Hospital. The inclusion criteria were: (1) No other conflicting diseases or tumour history in the health examination population; (2) Patients received no treatment before sample collection; and (3) Early and advanced GCs were definitively diagnosed on the basis of histological standards. The research received approval from the Ethics Committees of Guilin People's Hospital (No. 2020-102KY), Guangxi Medical University Cancer Hospital (No. KY2020148) and Youjiang Medical University Affiliated Hospital (No. YYFY-LL-2024-005). All participants provided signed informed consent. The plasma samples were promptly frozen in liquid nitrogen and maintained at -80°C.

The miRNA microarray or RNA-seq datasets of GC were searched and collected from The Cancer Genome Atlas (<https://portal.gdc.cancer.gov/>), ArrayExpress (<https://www.ebi.ac.uk/biostudies/arrayexpress>) and Gene Expression Omnibus (<https://www.ncbi.nlm.nih.gov/geo/>) databases. The inclusion criteria were: (1) GC; (2) Blood or plasma samples; and (3) Sample sizes in both the case and control groups no fewer than five. Samples from participants that had undergone any form of treatment were excluded.

Experimental material

The main reagents and consumables used for the experiments were: Hieff® qPCR SYBR green master mix (low Rox Pius) and MolPure® serum/plasma miRNA kit from Yeasen (<https://www.yeasen.com/>, Shanghai, China); miRNA first strand complementary DNA (cDNA) synthesis kit (Tail Reaction) purchased from Monad (<http://www.monadbiotech.com/>, Suzhou, Jiangsu Province, China); and TriQuick Reagent from Solarbio (<http://www.solarbio.net/>, Beijing, China). The main instruments and equipment used in the experiment were the ultramicro nucleic acid detector from Hangzhou Lifereal Biotech (<http://www.lifereal.com.cn/>, Hangzhou, Zhejiang Province, China) and the real-time PCR system from Agilent (<https://www.agilent.com/>, Santa Clara, CA, USA). All primers were designed and synthesised by Sangon Biotech (<https://www.sangon.com/>, Shanghai, China).

sRNA-seq and differential analysis

Experimental specimens and preparation: Total RNA was extracted from the plasma samples of five healthy individuals, five early GC patients and five advanced GC patients *via* TriQuick Reagent. The assessment of RNA purity and concentration was conducted *via* agarose gel electrophoresis in conjunction with an ultramicro nucleic acid detector. The miRNA first strand cDNA synthesis kit was used for reverse transcription to synthesise the first strand, followed by PCR amplification and size selection. sRNA fragments were screened *via* polyacrylamide gel electrophoresis. The sRNA library was constructed by excising the gel and recovering the small RNA fragments. The PCR products were purified *via* the AMPure XP system, after which the library quality was evaluated. The TruSeq PE cluster kit v4-cBot-HS developed by Illumina was utilized to cluster the indexed samples on the cBot Cluster Generation system. Subsequent to cluster generation, the sequences of the sRNA library were obtained *via* the Illumina sequencing platform.

Data processing: Perl software was used to eliminate reads that included adapters, poly-N sequences and sequences of suboptimal quality from the unprocessed fastp data, thereby generating clean reads. The Bowtie tool was used to align the processed reads with several databases, including GtRNAdb (<https://gtndb.ucsc.edu/>), Silva (<https://www.arb-si>

lva.de/), Repbase (<https://www.girinst.org/repbase/>) and Rfam (<https://rfam.org/>). This alignment facilitated the filtration of tRNA, rRNA, small nucleolar RNA, small nuclear RNA, other noncoding RNAs and repetitive sequences. The residual reads were subsequently utilized to analyse the existing miRNAs and predict new miRNAs through comparative analysis with the human genome and miRBase tool (<https://www.mirbase.org/>). To quantify the expression profile of miRNAs, the sRNAs of each sample were first remapped to precursor sequences, and the quantifications for each miRNA were derived from the results of the mapping analysis. Finally, differential gene expression analysis was conducted *via* the DESeq2 R package (version 1.10.1). The obtained *P* values were adjusted to manage the false discovery rate *via* the Benjamini-Hochberg method. The miRNAs exhibiting a $|\log_2(\text{fold change})| > 1.00$ and $P < 0.05$ were identified as differential miRNAs.

Key genes identified through RT-qPCR

The transcription status of the candidate differential miRNAs was verified through RT-qPCR. After the plasma samples were lysed and centrifuged, total RNA was isolated *via* the RNA adsorption column method. The miRNA RT enzyme mix was used for reverse transcription to synthesise the cDNA template, which was subsequently stored at -20°C. The PCR mixture was prepared following the instructions of the Hieff® qPCR SYBR green PCR kit, and miRNA quantitative analysis was conducted *via* the RT-PCR system. The *U6* gene, which is stably expressed in tissue, was used as the internal control for calculating the differences in miRNA expression. The CT value represents the number of cycles when the fluorescence signal reaches the pre-established threshold, transitioning from background to exponential growth during PCR amplification. The relative quantification results obtained through qPCR were presented *via* a $2^{-\Delta\Delta CT}$ value, which was applied to examine the transcriptionally expressed status of 15 distinctively expressed miRNAs in the plasma of healthy individuals, early GC patients and advanced GC patients. The calculation formulas are as follows: $\Delta CT = CT_{\text{target gene}} - CT_{\text{internal control gene}}$, $\Delta\Delta CT = -(\Delta CT_{\text{experimental group}} - \Delta CT_{\text{control group}})$.

MLP-ANN model construction and verification

The highly expressed differentially expressed genes identified through sRNA-seq and RT-qPCR were considered key genes. The expression status of key miRNAs was trained with R version 4.3.2 *via* the RSNNS, MASS and NeuralNetTools packages, and the MLP-ANN GC classifier model was constructed and validated with external datasets. The pROC package was utilized to conduct a receiver operating characteristic (ROC) analysis on the MLP-ANN model within both the training and validation sets and assess its performance by computing the area under the curve (AUC), sensitivity and specificity. An AUC value ranging from 0.5 to 0.7 denoted low discriminatory capacity, whereas a value between 0.7 and 0.8 reflected moderate discriminatory capacity. AUC between 0.8 and 0.9 signified high discriminatory capacity, and AUC exceeding 0.9 denoted very high discriminatory capacity.

Statistical analyses

Statistical analyses were conducted *via* statistical product and service solutions software version 22.0 and R software version 4.3.2. Differential analysis of clinicopathological features, including age, sex, American Joint Committee on Cancer (AJCC) stage and tumor node metastasis (TNM) classification stage, was performed *via* the χ^2 test. The differences in the expression levels of miRNAs among healthy controls, early-stage GC patients and advanced-stage GC patients were assessed *via* the Wilcoxon signed-rank test. The pROC package was used to construct ROC curves to assess the ability of the MLP-ANN classifier to distinguish the efficacy of the miRNAs in GC. Two-tailed $P < 0.05$ was considered significant.

RESULTS

Study design and included population

This study included discovery, training and validation phases (Figure 1).

In total, 107 healthy individuals, 71 early GC patients and 97 advanced GC patients participated; all of whom met the established inclusion standards (Table 1). The control group comprised 37 males and 70 females, whereas the early GC group comprised 38 males and 33 females. In contrast, the advanced GC group comprised 67 males and 30 females. Compared with that in the control group, the sex distribution in the early GC and advanced GC groups was significantly different ($P < 0.05$). In the early GC group, the number of individuals aged ≥ 60 years was substantially greater than that in the control group. Nevertheless, no substantial difference in age was noted between the advanced GC and control groups. It was pointed out that the differences in age and gender composition would not impact the expression levels of miRNAs in plasma (Supplementary Figures 1-5). Based on the AJCC staging standard, the healthy control group had no tumour status, the patients diagnosed with early GC were defined as those with T₁N₀M₀, and the patients diagnosed with advanced GC were defined as those with T₂₋₄N₀₋₃ and M₀₋₁ stages.

Three serum datasets were screened from public databases (Table 2), including GSE211692 (1418 GC samples and 5643 control samples), GSE112264 (50 GC samples and 41 control samples) and GSE106817 (115 GC samples and 2759 control samples).

Differential genes identified by sRNA-seq

The standards for screening were established as a fold change > 2 accompanied by adjusted $P < 0.05$. A total of 234 differential miRNAs were detected in the early GC group compared with the healthy control group, including 131 upregulated

Table 1 Basic information of the included plasma samples from three clinical centres, n (%)

Characteristics	Control (n = 107)	Early GC (n = 71)	Advanced GC (n = 97)	¹ P value	² P value
Gender					
Male	37 (34.6)	38 (53.5)	67 (69.1)	0.012	< 0.001
Female	70 (65.4)	33 (46.5)	30 (30.9)		
Age (year)					
< 60	101 (94.4)	52 (73.2)	86 (88.7)	< 0.001	0.139
≥ 60	6 (5.6)	19 (26.8)	11 (11.3)		
AJCC stage					
I	0	71 (100)	37 (38.1)		
II	0	0	5 (5.2)		
III	0	0	17 (17.5)		
IV	0	0	38 (39.2)		
T					
1	0	71 (100)	0		
2	0	0	42 (43.3)		
3	0	0	6 (6.2)		
4	0	0	49 (50.5)		
N					
0	0	71 (100)	42 (43.3)		
1	0	0	12 (12.4)		
2	0	0	22 (22.7)		
3	0	0	21 (21.6)		
M					
0	0	71 (100)	66 (68.0)		
1	0	0	31 (32.0)		

¹Early gastric cancer patients vs healthy controls.

²Advanced gastric cancer patients vs healthy controls.

GC: Gastric cancer; AJCC: American Joint Committee on Cancer.

Table 2 Detailed information regarding the included public serum samples

Dataset	Platform	Year	Country	GC (n)	Control (n)
Cohort-3: GSE211692	GPL21263	2022	Japan	1418	5643
Cohort-4: GSE112264	GPL21263	2019	Japan	50	41
Cohort-5: GSE106817	GPL21263	2018	Japan	115	2759

GC: Gastric cancer.

and 103 downregulated genes. In addition, 259 differentially expressed miRNAs were identified in the advanced GC compared with the healthy control group, including 124 upregulated and 135 downregulated genes. The upregulated miRNAs in both the early and advanced GC groups intersected, and subsequently, the 15 miRNAs with the most significant differences were selected for verification *via* a prospective dataset. Ultimately, the following miRNAs were selected as risk factors for GC development: miR-452-5p, miR-27b-5p, miR-5010-5p, miR-5189-5p, miR-204-3p, miR-3176, miR-132-5p, miR-223-3p, miR-203a-3p, miR-219a-2-3p, miR-885-5p, miR-552-5p, miR-199b-5p, miR-106b-5p and miR-1271-5p. These miRNAs were validated in prospective plasma samples.

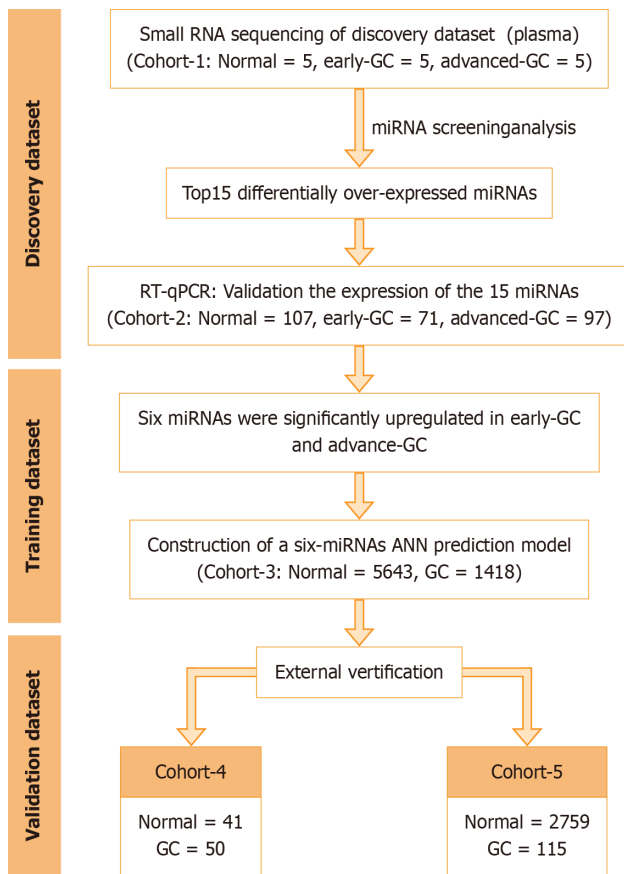


Figure 1 Workflow of the entire study. GC: Gastric cancer.

Verification of expression of 15 miRNAs via RT-qPCR

The details of all primer sequences utilized in these RT-qPCR experiments are presented in [Supplementary Table 1](#). In contrast to those in the control group, miR-204-3p, miR-452-5p, miR-5010-5p, miR-27b-5p, miR-5189-5p, miR-552-5p and miR-199b-5p were notably elevated in both the early and advanced GC groups ($P < 0.01$, [Figure 2A–G](#)). The levels of miR-452-5p, miR-5010-5p, miR-27b-5p, miR-5189-5p, miR-552-5p and miR-199b-5p were substantially increased in advanced GC patients compared with early GC patients ($P < 0.01$). Therefore, miR-452-5p, miR-5010-5p, miR-27b-5p, miR-5189-5p, miR-552-5p and miR-199b-5p may serve as risk-associated miRNAs in GC evolution and could serve as plasma biomarkers for early GC screening. The further increased expression of these miRNAs in advanced GC suggests that they continued to participate in the progression of GC to an advanced stage. However, the transcription levels of miR-132-5p, miR-885-5p, miR-3176 and miR-203a-3p did not show notable disparities among the three groups ($P > 0.05$) ([Figure 2H–K](#)). The expression status of miR-223-3p, miR-219a-2-3p and miR-106b-5p was not substantially different between the early GC and healthy control group ($P > 0.05$) ([Figure 2L–N](#)). Compared with the early GC and healthy control groups, the transcription status of miR-223-3p was markedly lower in the advanced GC group ($P < 0.01$), although expression of miR-219a-2-3p and miR-106b-5p was notably greater in the advanced GC group than in the early GC group (miR-219a-2-3p, $P < 0.05$; miR-106b-5p, $P < 0.01$) and the control group (both $P < 0.01$) ([Figure 2M and N](#)). Compared with the control group, the transcription level of miR-1271-5p was lower in the early and advanced GC groups, and expression of miR-1271-5p was markedly lower in the advanced GC group than in the early GC group ($P < 0.01$) ([Figure 2O](#)).

GC classifier on the basis of six miRNAs

Six critical miRNAs, miR-452-5p, miR-5010-5p, miR-27b-5p, miR-5189-5p, miR-552-5p and miR-199b-5p, served as the input layer, and an MLP-ANN model was constructed ([Figures 3 and 4](#)). For the MLP-ANN model, the input layer consisted of six miRNAs as factors, the middle two layers were hidden layers, and the output layer indicated the outcomes (control or GC). The independent variable-miR-27b-5p-had the greatest influence on the model ([Figure 4A](#)). In training set cohort-3, sensitivity for predicting GC was 0.989 [95% confidence interval (CI): 0.976–0.994], specificity was 0.891 (95%CI: 0.775–0.900), and AUC was 0.983 (95%CI: 0.980–0.986) ([Figure 4B](#)). In validation set cohort-4, sensitivity for predicting GC was 0.940 (95%CI: 0.860 to nearly 1.000), with a specificity approaching 1.000 (95%CI: 0.878 to nearly 1.000), along with an AUC of 0.995 (95%CI: 0.987 to nearly 1.000) ([Figure 4C](#)). In validation set cohort-5, sensitivity for predicting GC was 0.939 (95%CI: 0.878–0.974), specificity was 0.916 (95%CI: 0.861–0.946), and AUC was 0.979 (95%CI: 0.972–0.986) ([Figure 4D](#)).

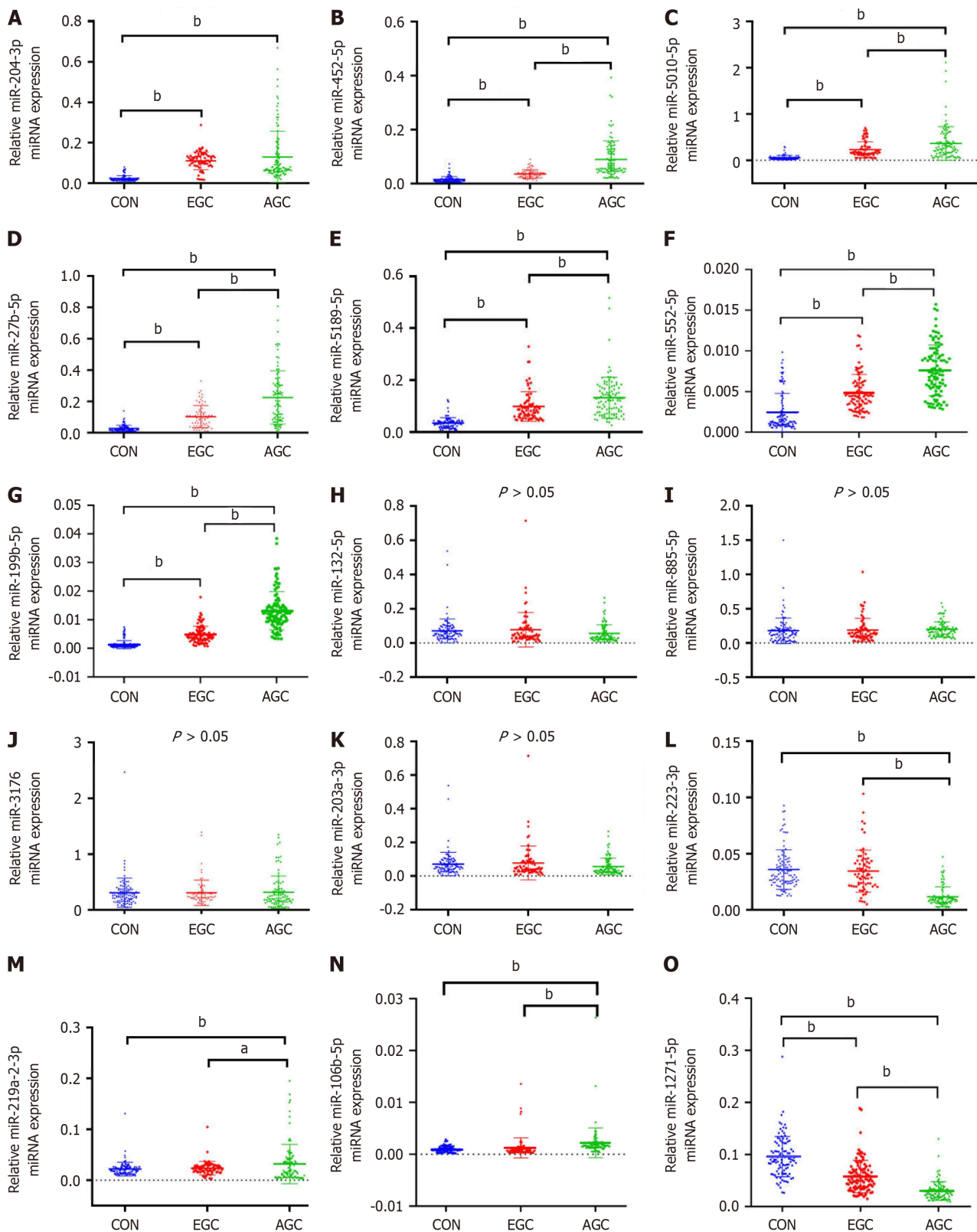


Figure 2 Expression of miRNAs in the three groups. A: miR-204-3p; B: miR-452-5p; C: miR-5010-5p; D: miR-27b-5p; E: miR-5189-5p; F: miR-552-5p; G: miR-199b-5p; H: miR-132-5p; I: miR-885-5p; J: miR-3176; K: miR-203a-3p; L: miR-223-3p; M: miR-219a-2-3p; N: miR-106b-5p; O: miR-1271-5p. ^aP < 0.05. ^bP < 0.01. CON: A group including 107 control samples; EGC: A group including 71 early gastric cancer samples; AGC: A group including 97 advanced gastric cancer samples.

DISCUSSION

Early GC often develops insidiously and lacks typical clinical symptoms, resulting in many patients receiving a diagnosis at an advanced stage. Studies have indicated that > 90% of patients with early GC survive for ≥ 5 years[14], whereas < 30% of patients with advanced GC achieve the same survival rate[15,16]. Therefore, conducting large-scale screening for

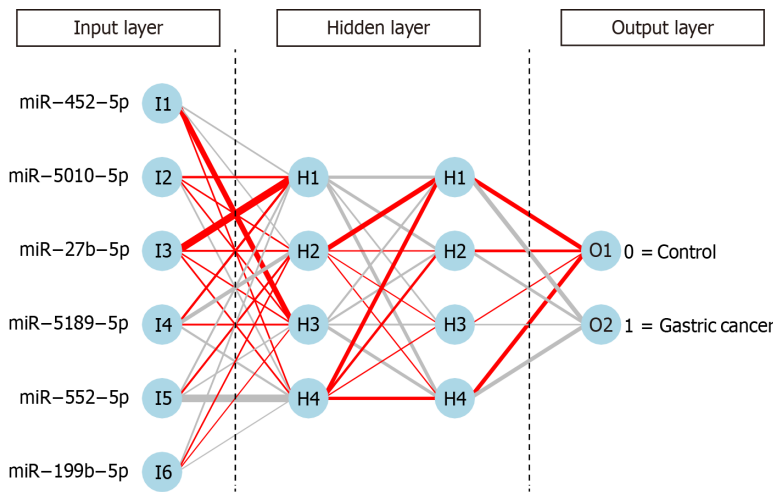


Figure 3 Six-miRNA artificial neural network model.

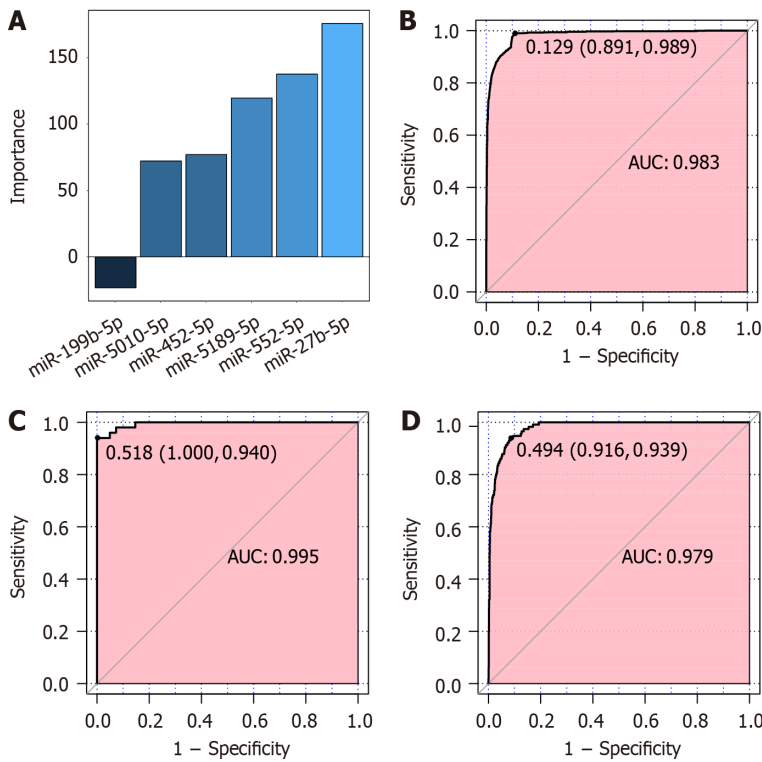


Figure 4 Important variables and receiver operating characteristic analysis of the six-microRNA artificial neural network model. A: Importance analysis of six risk-related miRNAs; B: Receiver operating characteristic (ROC) curve of cohort-3; C: ROC curve of cohort-4; D: ROC curve of cohort-5. AUC: Area under the curve.

early GC is important because it can identify early GC lesions in a timely manner, enhance the diagnostic accuracy of early GC, lower the tumour stage at diagnosis, and reduce the economic burden on patients and improve their survival rate and quality of life. Currently, the screening methods for GC include endoscopy, *Helicobacter pylori* detection, serological tumour marker detection and genetic detection (e.g., circulating malignant cells or circulating tumour cell DNA)[17]. Endoscopy is the most direct and accurate screening method; however, patient acceptance is low because it is invasive and expensive[9]. Recently, because miRNAs have stable structures, extensive studies have investigated their potential as new plasma or serum biological markers for tumours[18]. In the current study, plasma samples were collected from healthy controls, early-stage GC patients and advanced-stage GC patients across multiple centres. Key miRNAs were identified through sRNA-seq and RT-qPCR experiments, and an MLP-ANN predictive model was constructed to explore its clinical value in distinguishing GC.

The present study performed sRNA-seq on plasma samples from five healthy persons, five early GC patients and five advanced GC patients and carried out RT-qPCR validation on plasma samples from 107 healthy individuals, 71 early GC patients and 97 advanced GC patients. Six miRNAs, miR-452-5p, miR-5010-5p, miR-27b-5p, miR-5189-5p, miR-552-5p and

miR-199b-5p, which may be involved in the molecular process underlying the advancement and evolution of GC, were identified. It was previously reported that the level of miR-27b-5p was elevated in GC tissues and MKN74 cells, indicating that miR-27b-5p plays a pivotal role in GC progression[19,20]. Exosomal miR-552-5p may cause damage to natural killer cells through its interaction with the programmed cell death-1/programmed cell death ligand 1 signalling pathway, which may contribute to immune resistance in GC[21]. miR-199b-5p exerts carcinogenic effects by targeting the *HHIP* gene and may represent a viable therapeutic target[22]. Because these six miRNAs showed markedly elevated levels in both early and advanced GC, among which miR-27b-5p, miR-552-5p and miR-199b-5p have been proposed to have oncogenic effects, we identified these six miRNAs as key risk miRNAs and potential plasma biological markers for the early diagnosis of GC.

Studies have shown that, compared with a single miRNA, combining multiple miRNAs has greater predictability and stability for predicting event outcomes[23,24]. Machine learning has the capacity to investigate and address diverse types of data because of its flexibility and scalability in comparison with traditional statistical methods[25,26], assisting in identifying previously unknown relationships between risky variables and diseases. Hence, machine learning has been widely studied for disease diagnosis, risk stratification and survival prediction. Therefore, in the present study, an MLP-ANN model was constructed to investigate the clinical significance of combining six critical miRNAs for GC differentiation. The AUC for the model within the training group was 0.983 (sensitivity: 0.989; specificity: 0.891). Additionally, the AUCs within the validation groups were 0.995 (sensitivity: 0.940, specificity: nearly 1.000) and 0.979 (sensitivity: 0.939, specificity: 0.916), respectively, suggesting that this six-miRNA MLP-ANN classifier possesses discriminatory ability and may become a tool for the early population screening of patients with GC. Currently, biomarkers based on the combination of multiple miRNAs have been revealed for GC. For example, the combined detection of a five-miRNA (miR-18a, miR-93, miR-146b, miR-181b and miR-335) biomarker achieved an AUC of 0.90 in GC patients. In addition, by reducing the number of miRNAs, a three-miRNA (miR-18a, miR-181b and miR-335) biomarker panel had an AUC of 0.86 in distinguishing patients with GC[24]. A logistic regression model utilizing six miRNAs (miR-10b-5p, miR-132-3p, miR-185-5p, miR-195-5p, miR-20a-3p and miR-296-5p) in serum achieved AUCs of 0.764 within the training dataset and 0.702 within the verification dataset[27]. Nevertheless, the application of combined miRNA biomarker detection in GC remains underdeveloped, and its discriminatory ability is still limited. The present research innovatively constructed a six-miRNA classifier utilizing a machine learning approach, proposing it as an innovative biomarker that has significant potential for the detection and population screening of GC.

In summary, the present research conducted sRNA-seq on 15 plasma samples, and the differential genes acquired were verified in 275 plasma samples *via* RT-qPCR. Six key miRNAs including miR-452-5p, miR-5010-5p, miR-27b-5p, miR-5189-5p, miR-552-5p and miR-199b-5p were ultimately identified. An MLP-ANN model incorporating these six miRNAs was innovatively constructed based on 10 026 serum samples *via* a machine learning method. The AUC for the training cohort was 0.983, whereas the AUCs were 0.995 and 0.979 for the two validation cohorts. The model has been shown to be an innovative and efficient biomarker for GC. However, several limitations exist. For example, the exploration of the six-miRNA model as an early diagnostic marker was restricted because of insufficient advanced GC datasets. Additionally, the accuracy of this six-miRNA classifier needs to be validated in further diverse datasets and public health centres to assess its feasibility for practical application.

CONCLUSION

In the present research, six potential plasma miRNA biomarkers for GC, miR-452-5p, miR-5010-5p, miR-27b-5p, miR-5189-5p, miR-552-5p and miR-199b-5p, were identified through sRNA-seq and RT-qPCR on a large number of serum samples. In addition, a GC classifier composed of these six miRNAs was constructed *via* a machine learning method, providing new insights for the early diagnosis and population screening of GC.

ACKNOWLEDGEMENTS

The authors thank the Guangxi Zhuang Autonomous Region Clinical Medicine Research Center for Molecular Pathology and Intelligent Pathology Precision Diagnosis.

FOOTNOTES

Author contributions: Ma FC, Liu AQ, Chen G, Wei DM, and Ge LY designed the research; Ma FC and Chi BT collected clinical information; Ma FC, Zhang GL, Chen G, and Wei DM conducted the small RNA-sequencing and real-time quantitative reverse transcription polymerase chain reaction experiments; Zhang GL and Tang YL screened and processed the public small RNA sequencing datasets; Tang YL, Peng W and Gao JB analysed the data; Ma FC, Zhang GL, Chi BT, Tang YL, Peng W, and Gao JB wrote the draft; Liu AQ, Chen G, Wei DM, and Ge LY participated in manuscript revision; All authors read and approved the final manuscript.

Supported by the Guangxi Zhuang Autonomous Region Health Commission Scientific Research Project, No. Z-A20220465; Guangxi Key R and D Plan, No. AB20297021; Guangxi Medical and Health Appropriate Technology Development and Promotion Application Project, No. S2022107; China Undergraduate Innovation and Entrepreneurship Training Program, No. S202310598074; and Future Academic Star of Guangxi Medical University, No. WLXSZX23109.

Institutional review board statement: The study was reviewed and approved by the Institutional Review Boards of the Guilin People's Hospital (No. 2020-102KY), Guangxi Medical University Cancer Hospital (No. KY2020148) and Youjiang Medical University Affiliated Hospital (No. YYFY-LL-2024-005).

Institutional animal care and use committee statement: This research did not use animals and did not require ethnics.

Conflict-of-interest statement: The authors declare that they have no conflict of interest.

Data sharing statement: The data used to support the findings of this study are available from the corresponding author upon request at gxgly@hotmail.com.

Open Access: This article is an open-access article that was selected by an in-house editor and fully peer-reviewed by external reviewers. It is distributed in accordance with the Creative Commons Attribution NonCommercial (CC BY-NC 4.0) license, which permits others to distribute, remix, adapt, build upon this work non-commercially, and license their derivative works on different terms, provided the original work is properly cited and the use is non-commercial. See: <https://creativecommons.org/licenses/by-nc/4.0/>

Country of origin: China

ORCID number: Fu-Chao Ma [0000-0003-1248-1713](https://orcid.org/0000-0003-1248-1713); Guan-Lan Zhang [0009-0003-4825-5555](https://orcid.org/0009-0003-4825-5555); Bang-Teng Chi [0009-0000-5504-5589](https://orcid.org/0009-0000-5504-5589); Yu-Lu Tang [0009-0004-0462-618X](https://orcid.org/0009-0004-0462-618X); Wei Peng [0009-0007-3492-0875](https://orcid.org/0009-0007-3492-0875); Gang Chen [0000-0003-2402-2987](https://orcid.org/0000-0003-2402-2987); Dan-Ming Wei [0000-0002-2180-9226](https://orcid.org/0000-0002-2180-9226); Lian-Ying Ge [0000-0003-4143-000X](https://orcid.org/0000-0003-4143-000X).

S-Editor: Fan M

L-Editor: Kerr C

P-Editor: Wang WB

REFERENCES

- 1 **Bray F**, Laversanne M, Sung H, Ferlay J, Siegel RL, Soerjomataram I, Jemal A. Global cancer statistics 2022: GLOBOCAN estimates of incidence and mortality worldwide for 36 cancers in 185 countries. *CA Cancer J Clin* 2024; **74**: 229-263 [PMID: [38572751](https://pubmed.ncbi.nlm.nih.gov/38572751/) DOI: [10.3322/caac.21834](https://doi.org/10.3322/caac.21834)]
- 2 **Smyth EC**, Nilsson M, Grabsch HI, van Grieken NC, Lordick F. Gastric cancer. *Lancet* 2020; **396**: 635-648 [PMID: [32861308](https://pubmed.ncbi.nlm.nih.gov/32861308/) DOI: [10.1016/S0140-6736\(20\)31288-5](https://doi.org/10.1016/S0140-6736(20)31288-5)]
- 3 **de Mello RA**, Amaral GA, Neves NM, Lippo EG, Parini F, Xu S, Tolia M, Charalampakis N, Tadokoro H, Castelo-Branco P, Zhu J. Current and potential biomarkers in gastric cancer: a critical review of the literature. *Future Oncol* 2021; **17**: 3383-3396 [PMID: [34291647](https://pubmed.ncbi.nlm.nih.gov/34291647/) DOI: [10.2217/fon-2021-0084](https://doi.org/10.2217/fon-2021-0084)]
- 4 **He B**, Zhao Z, Cai Q, Zhang Y, Zhang P, Shi S, Xie H, Peng X, Yin W, Tao Y, Wang X. miRNA-based biomarkers, therapies, and resistance in Cancer. *Int J Biol Sci* 2020; **16**: 2628-2647 [PMID: [32792861](https://pubmed.ncbi.nlm.nih.gov/32792861/) DOI: [10.7150/ijbs.47203](https://doi.org/10.7150/ijbs.47203)]
- 5 **Pan YJ**, Wan J, Wang CB. MiR-326: Promising Biomarker for Cancer. *Cancer Manag Res* 2019; **11**: 10411-10418 [PMID: [31849530](https://pubmed.ncbi.nlm.nih.gov/31849530/) DOI: [10.2147/CMAR.S223875](https://doi.org/10.2147/CMAR.S223875)]
- 6 **Zhou J**, Sun H, Wang Z, Cong W, Zeng M, Zhou W, Bie P, Liu L, Wen T, Kuang M, Han G, Yan Z, Wang M, Liu R, Lu L, Ren Z, Zeng Z, Liang P, Liang C, Chen M, Yan F, Wang W, Hou J, Ji Y, Yun J, Bai X, Cai D, Chen W, Chen Y, Cheng W, Cheng S, Dai C, Guo W, Guo Y, Hua B, Huang X, Jia W, Li Q, Li T, Li X, Li Y, Li Y, Liang J, Ling C, Liu T, Liu X, Lu S, Lv G, Mao Y, Meng Z, Peng T, Ren W, Shi H, Shi G, Shi M, Song T, Tao K, Wang J, Wang K, Wang L, Wang W, Wang X, Wang Z, Xiang B, Xing B, Xu J, Yang J, Yang J, Yang Y, Yang Y, Ye S, Yin Z, Zeng Y, Zhang B, Zhang B, Zhang L, Zhang S, Zhang T, Zhang Y, Zhao M, Zhao Y, Zheng H, Zhou L, Zhu J, Zhu K, Liu R, Shi Y, Xiao Y, Zhang L, Yang C, Wu Z, Dai Z, Chen M, Cai J, Wang W, Cai X, Li Q, Shen F, Qin S, Teng G, Dong J, Fan J. Guidelines for the Diagnosis and Treatment of Primary Liver Cancer (2022 Edition). *Liver Cancer* 2023; **12**: 405-444 [PMID: [37901768](https://pubmed.ncbi.nlm.nih.gov/37901768/) DOI: [10.1159/000530495](https://doi.org/10.1159/000530495)]
- 7 **Xie DY**, Zhu K, Ren ZG, Zhou J, Fan J, Gao Q. A review of 2022 Chinese clinical guidelines on the management of hepatocellular carcinoma: updates and insights. *Hepatobiliary Surg Nutr* 2023; **12**: 216-228 [PMID: [37124695](https://pubmed.ncbi.nlm.nih.gov/37124695/) DOI: [10.21037/hbsn-22-469](https://doi.org/10.21037/hbsn-22-469)]
- 8 **Wang YY**, Ye ZY, Zhao ZS, Li L, Wang YX, Tao HQ, Wang HJ, He XJ. Clinicopathologic significance of miR-10b expression in gastric carcinoma. *Hum Pathol* 2013; **44**: 1278-1285 [PMID: [23351547](https://pubmed.ncbi.nlm.nih.gov/23351547/) DOI: [10.1016/j.humpath.2012.10.014](https://doi.org/10.1016/j.humpath.2012.10.014)]
- 9 **Jelski W**, Mroczko B. Molecular and Circulating Biomarkers of Gastric Cancer. *Int J Mol Sci* 2022; **23** [PMID: [35886934](https://pubmed.ncbi.nlm.nih.gov/35886934/) DOI: [10.3390/ijms23147588](https://doi.org/10.3390/ijms23147588)]
- 10 **Li X**, Zhang Y, Zhang Y, Ding J, Wu K, Fan D. Survival prediction of gastric cancer by a seven-microRNA signature. *Gut* 2010; **59**: 579-585 [PMID: [19951901](https://pubmed.ncbi.nlm.nih.gov/19951901/) DOI: [10.1136/gut.2008.175497](https://doi.org/10.1136/gut.2008.175497)]
- 11 **Chen ZH**, Lin L, Wu CF, Li CF, Xu RH, Sun Y. Artificial intelligence for assisting cancer diagnosis and treatment in the era of precision medicine. *Cancer Commun (Lond)* 2021; **41**: 1100-1115 [PMID: [34613667](https://pubmed.ncbi.nlm.nih.gov/34613667/) DOI: [10.1002/cac2.12215](https://doi.org/10.1002/cac2.12215)]
- 12 **Tran KA**, Kondrashova O, Bradley A, Williams ED, Pearson JV, Waddell N. Deep learning in cancer diagnosis, prognosis and treatment selection. *Genome Med* 2021; **13**: 152 [PMID: [34579788](https://pubmed.ncbi.nlm.nih.gov/34579788/) DOI: [10.1186/s13073-021-00968-x](https://doi.org/10.1186/s13073-021-00968-x)]
- 13 **Tu JV**. Advantages and disadvantages of using artificial neural networks versus logistic regression for predicting medical outcomes. *J Clin Epidemiol* 1996; **49**: 1225-1231 [PMID: [8892489](https://pubmed.ncbi.nlm.nih.gov/8892489/) DOI: [10.1016/s0895-4356\(96\)00002-9](https://doi.org/10.1016/s0895-4356(96)00002-9)]
- 14 **Norwood DA**, Montalvan-Sanchez E, Dominguez RL, Morgan DR. Gastric Cancer: Emerging Trends in Prevention, Diagnosis, and Treatment. *Gastroenterol Clin North Am* 2022; **51**: 501-518 [PMID: [36153107](https://pubmed.ncbi.nlm.nih.gov/36153107/) DOI: [10.1016/j.gtc.2022.05.001](https://doi.org/10.1016/j.gtc.2022.05.001)]
- 15 **Allemani C**, Matsuda T, Di Carlo V, Harewood R, Matz M, Nikšić M, Bonaventure A, Valkov M, Johnson CJ, Estève J, Ogundiyi OJ, Azevedo E Silva G, Chen WQ, Eser S, Engholm G, Stiller CA, Monnereau A, Woods RR, Visser O, Lim GH, Aitken J, Weir HK, Coleman

- MP; CONCORD Working Group. Global surveillance of trends in cancer survival 2000-14 (CONCORD-3): analysis of individual records for 37 513 025 patients diagnosed with one of 18 cancers from 322 population-based registries in 71 countries. *Lancet* 2018; **391**: 1023-1075 [PMID: 29395269 DOI: 10.1016/S0140-6736(17)33326-3]
- 16 **Early Diagnosis and Treatment Group**, Chinese Society of Oncology; Chinese Medical Association. [Chinese expert consensus on early diagnosis and treatment of gastric cancer (2023 edition)]. *Zhonghua Xiaohuawaike Zazhi* 2024; **23**: 23-26 [DOI: 10.3760/cma.j.cn115610-20231207-00239]
- 17 **Matsuoka T**, Yashiro M. Novel biomarkers for early detection of gastric cancer. *World J Gastroenterol* 2023; **29**: 2515-2533 [PMID: 37213407 DOI: 10.3748/wjg.v29.i17.2515]
- 18 **Ho PTB**, Clark IM, Le LTT. MicroRNA-Based Diagnosis and Therapy. *Int J Mol Sci* 2022; **23** [PMID: 35806173 DOI: 10.3390/ijms23137167]
- 19 **Kim YJ**, Jeong S, Jung WY, Choi JW, Hwang KC, Kim SW, Lee YC. miRNAs as potential biomarkers for the progression of gastric cancer inhibit CREBZF and regulate migration of gastric adenocarcinoma cells. *Int J Med Sci* 2020; **17**: 693-701 [PMID: 32218690 DOI: 10.7150/ijms.42654]
- 20 **Kim YJ**, Hwang KC, Kim SW, Lee YC. Potential miRNA-target interactions for the screening of gastric carcinoma development in gastric adenoma/dysplasia. *Int J Med Sci* 2018; **15**: 610-616 [PMID: 29725252 DOI: 10.7150/ijms.24061]
- 21 **Tang CW**, Yang JH, Qin JW, Wu HJ, Cui HP, Ge LY, Liu AQ. Regulation of the PD-1/PD-L1 Axis and NK Cell Dysfunction by Exosomal miR-552-5p in Gastric Cancer. *Dig Dis Sci* 2024; **69**: 3276-3289 [PMID: 39020183 DOI: 10.1007/s10620-024-08536-0]
- 22 **Chen S**, Wu H, Zhu L, Jiang M, Wei S, Luo J, Liu A. MiR-199b-5p Promotes Gastric Cancer Progression by Regulating HHIP Expression. *Front Oncol* 2021; **11**: 728393 [PMID: 34532291 DOI: 10.3389/fonc.2021.728393]
- 23 **Swanson K**, Wu E, Zhang A, Alizadeh AA, Zou J. From patterns to patients: Advances in clinical machine learning for cancer diagnosis, prognosis, and treatment. *Cell* 2023; **186**: 1772-1791 [PMID: 36905928 DOI: 10.1016/j.cell.2023.01.035]
- 24 **Izumi D**, Zhu Z, Chen Y, Toden S, Huo X, Kanda M, Ishimoto T, Gu D, Tan M, Kodera Y, Baba H, Li W, Chen J, Wang X, Goel A. Assessment of the Diagnostic Efficiency of a Liquid Biopsy Assay for Early Detection of Gastric Cancer. *JAMA Netw Open* 2021; **4**: e2121129 [PMID: 34427680 DOI: 10.1001/jamanetworkopen.2021.21129]
- 25 **Chi H**, Chen H, Wang R, Zhang J, Jiang L, Zhang S, Jiang C, Huang J, Quan X, Liu Y, Zhang Q, Yang G. Proposing new early detection indicators for pancreatic cancer: Combining machine learning and neural networks for serum miRNA-based diagnostic model. *Front Oncol* 2023; **13**: 1244578 [PMID: 37601672 DOI: 10.3389/fonc.2023.1244578]
- 26 **Ngiam KY**, Khor IW. Big data and machine learning algorithms for health-care delivery. *Lancet Oncol* 2019; **20**: e262-e273 [PMID: 31044724 DOI: 10.1016/S1470-2045(19)30149-4]
- 27 **Huang Z**, Zhu D, Wu L, He M, Zhou X, Zhang L, Zhang H, Wang W, Zhu J, Cheng W, Chen Y, Fan Y, Qi L, Yin Y, Zhu W, Shu Y, Liu P. Six Serum-Based miRNAs as Potential Diagnostic Biomarkers for Gastric Cancer. *Cancer Epidemiol Biomarkers Prev* 2017; **26**: 188-196 [PMID: 27756776 DOI: 10.1158/1055-9965.EPI-16-0607]



Published by **Baishideng Publishing Group Inc**
7041 Koll Center Parkway, Suite 160, Pleasanton, CA 94566, USA
Telephone: +1-925-3991568
E-mail: office@baishideng.com
Help Desk: <https://www.f6publishing.com/helpdesk>
<https://www.wjgnet.com>

