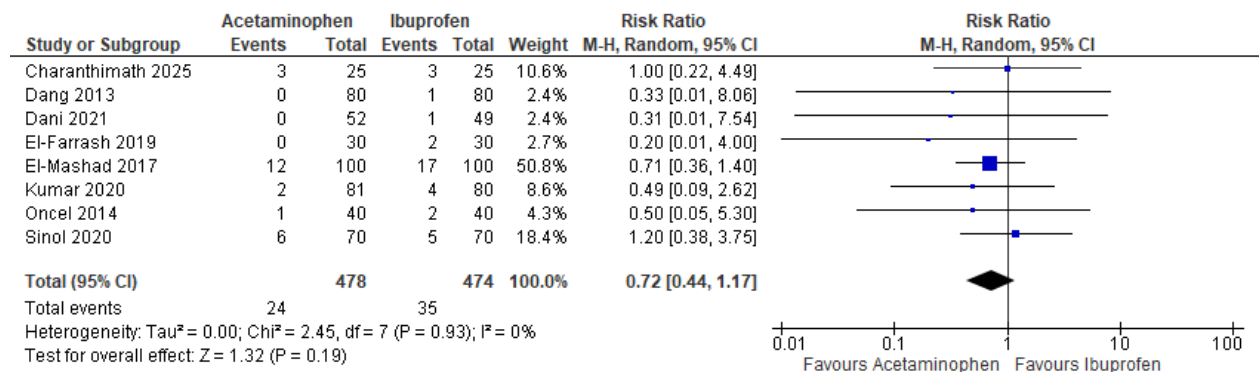
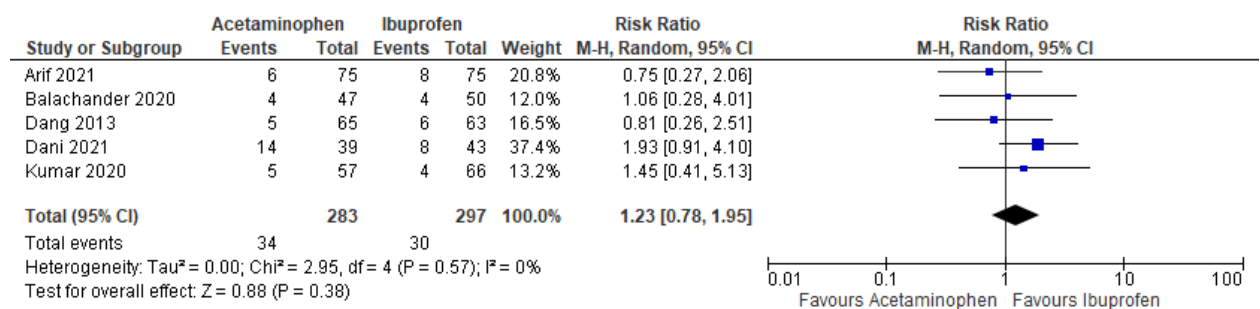


Intention-to-treat	Unique ID	Study ID	Experimental	Comparator	Outcome	Weight	D1	D2	D3	D4	D5	Overall	
	Al-Lawama 2018	Al-Lawama 2018	NA	NA	NA	1	+	!	+	+	!	!	Low risk
	Arif 2021	Arif 2021	NA	NA	NA	1	!	!	+	+	!	!	Some concerns
	Asadpour 2018	Asadpour 2018	NA	NA	NA	1	+	!	+	+	!	!	High risk
	Bagheri 2016	Bagheri 2016	NA	NA	NA	1	!	!	+	+	!	!	
	Balachander 2020	Balachander 2020	NA	NA	NA	1	+	+	+	+	!	!	D1 Randomisation process
	Charanthimath 2025	Charanthimath 2025	NA	NA	NA	1	+	+	+	!	!	!	D2 Deviations from the intended interventions
	Dang 2013	Dang 2013	NA	NA	NA	1	+	+	+	!	!	!	D3 Missing outcome data
	Dani 2021	Dani 2021	NA	NA	NA	1	+	!	+	+	!	!	D4 Measurement of the outcome
	El-Farrash 2019	El-Farrash 2019	NA	NA	NA	1	+	+	+	+	!	!	D5 Selection of the reported result
	El-Mashad 2017	El-Mashad 2017	NA	NA	NA	1	+	+	+	+	!	!	
	Jafari 2019	Jafari 2019	NA	NA	NA	1	!	!	+	+	!	!	
	Kumar 2020	Kumar 2020	NA	NA	NA	1	+	+	+	+	!	!	
	Meena 2020	Meena 2020	NA	NA	NA	1	!	+	+	!	!	!	
	Oncel 2014	Oncel 2014	NA	NA	NA	1	+	+	+	+	!	!	
	Samadi 2022	Samadi 2022	NA	NA	NA	1	+	+	+	+	!	!	
	Shah 2025	Shah 2025	NA	NA	NA	1	+	+	+	+	!	!	
	Sinol 2020	Sinol 2020	NA	NA	NA	1	+	+	+	!	!	!	
	Yang 2016	Yang 2016	NA	NA	NA	1	!	!	+	+	!	!	

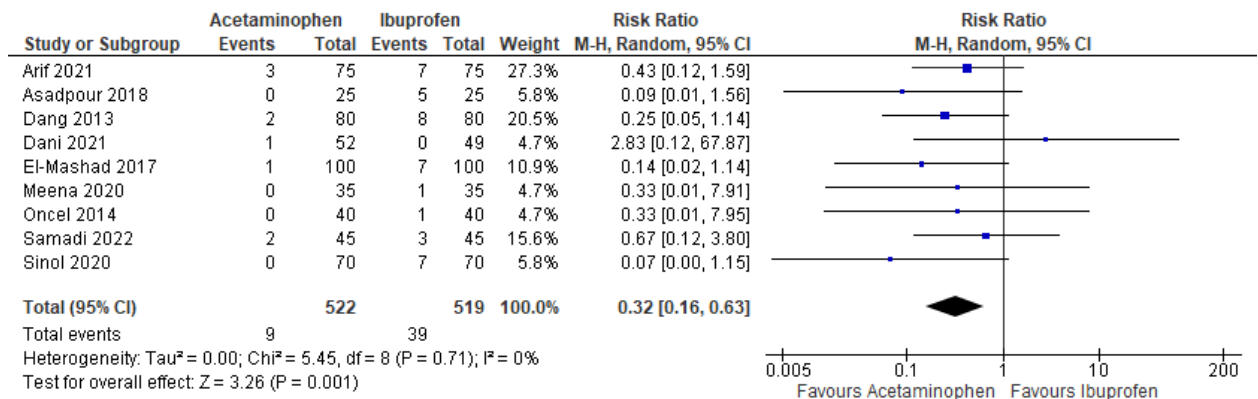
Supplementary Figure 1 Risk of bias assessment.



Supplementary Figure 2 Need for surgical ligation.



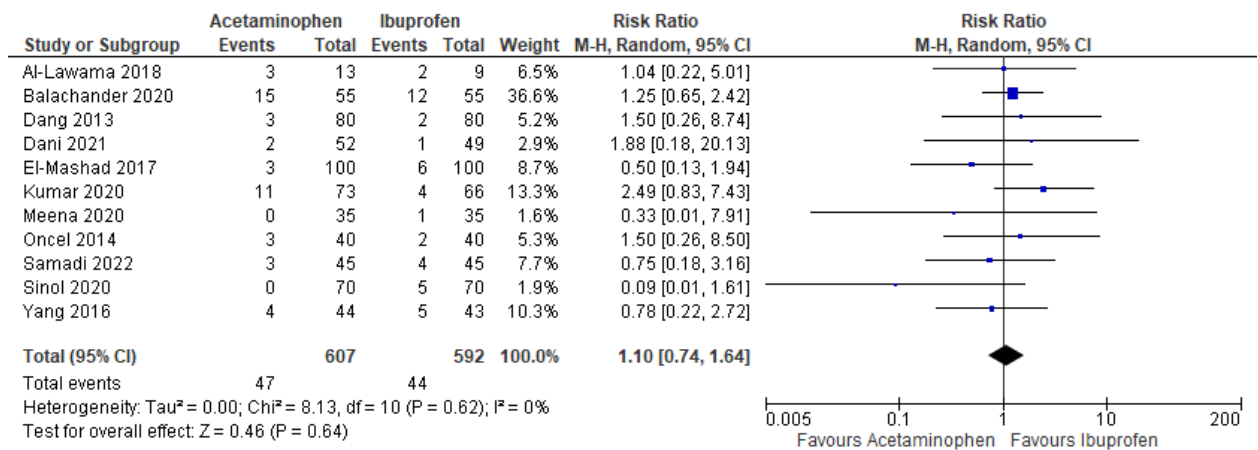
Supplementary Figure 3 Patent ductus arteriosus reopening rate.



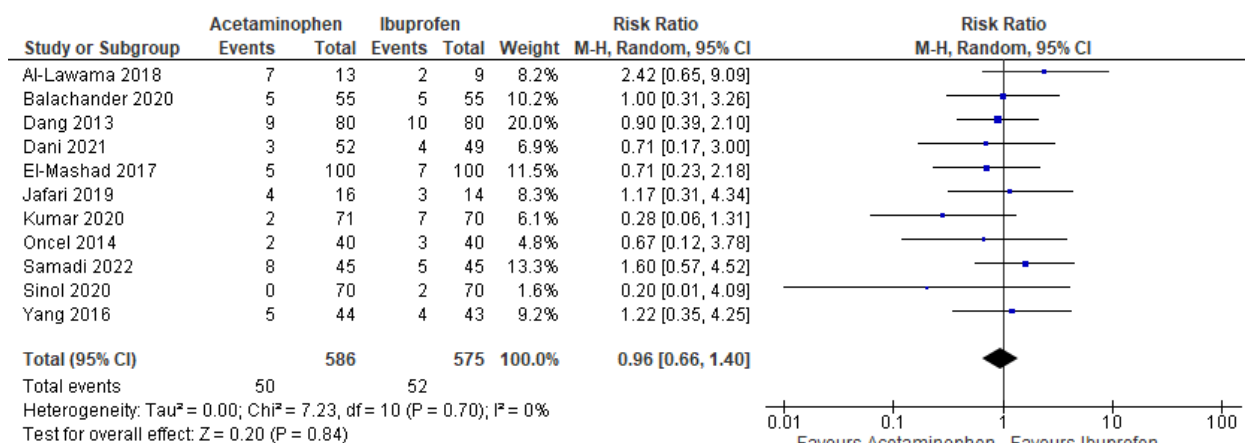
Supplementary Figure 4 Gastrointestinal bleeding.



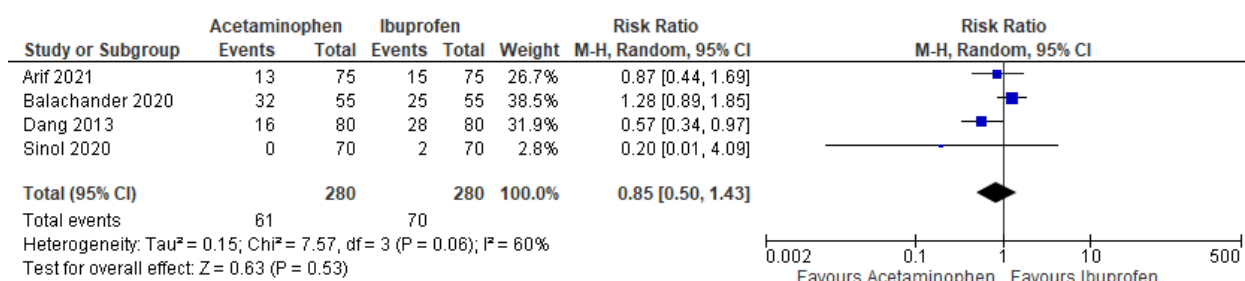
Supplementary Figure 5 Renal failure.



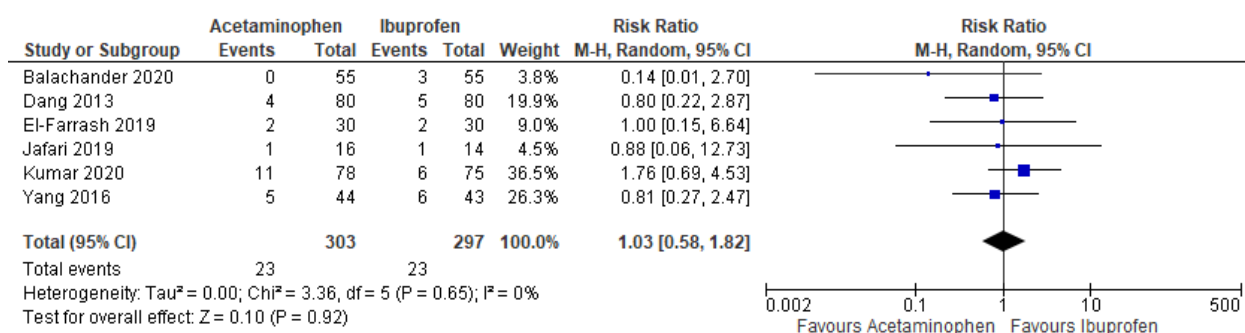
Supplementary Figure 6 Necrotizing enterocolitis.



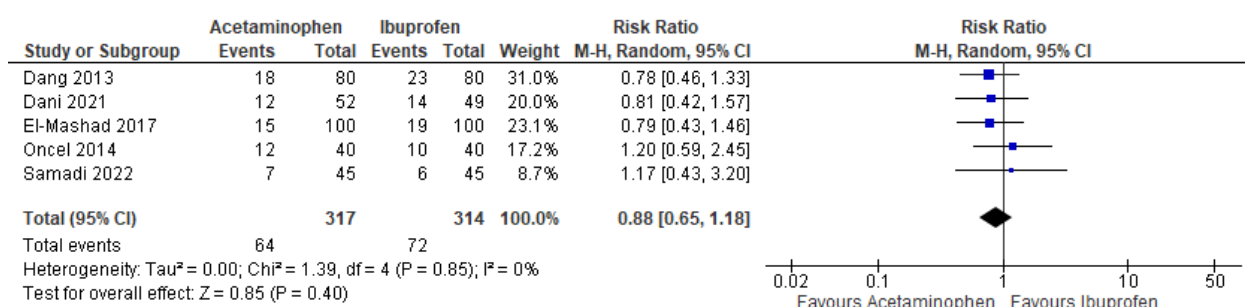
Supplementary Figure 7 Intraventricular hemorrhage.



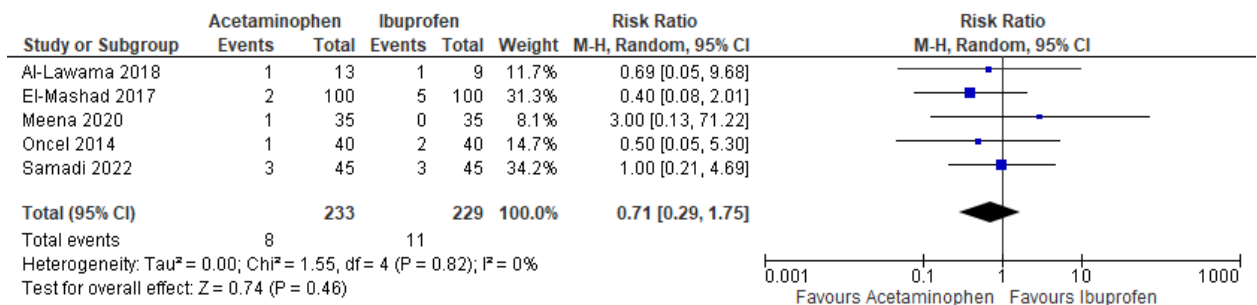
Supplementary Figure 8 Hyperbilirubinemia.



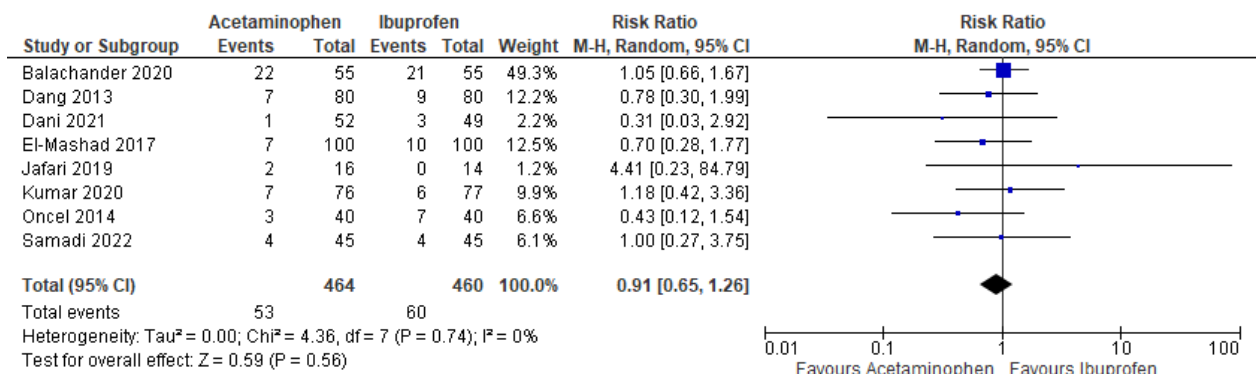
Supplementary Figure 9 Bronchopulmonary dysplasia.



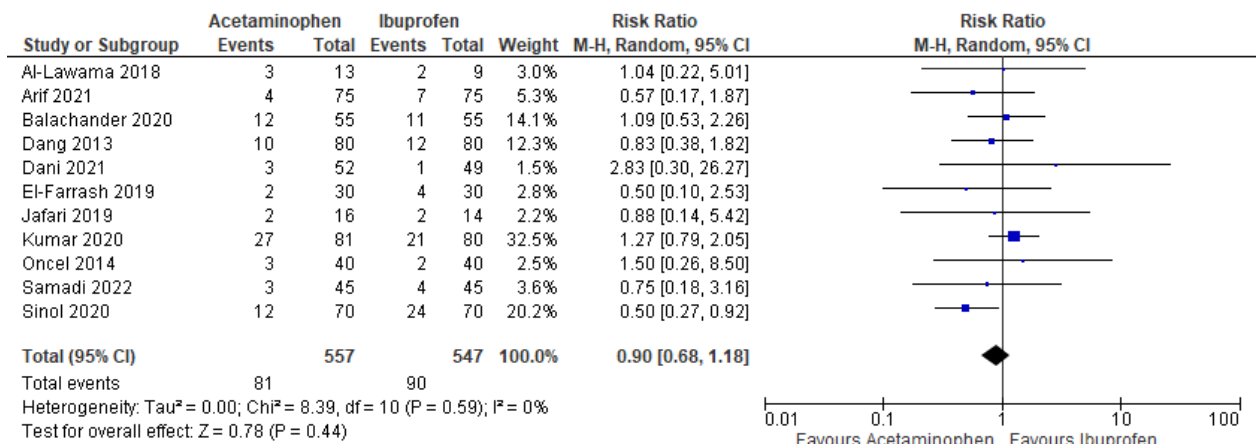
Supplementary Figure 10 Sepsis.



Supplementary Figure 11 Pulmonary haemorrhage.



Supplementary Figure 12 Retinopathy of prematurity.



Supplementary Figure 13 Mortality.