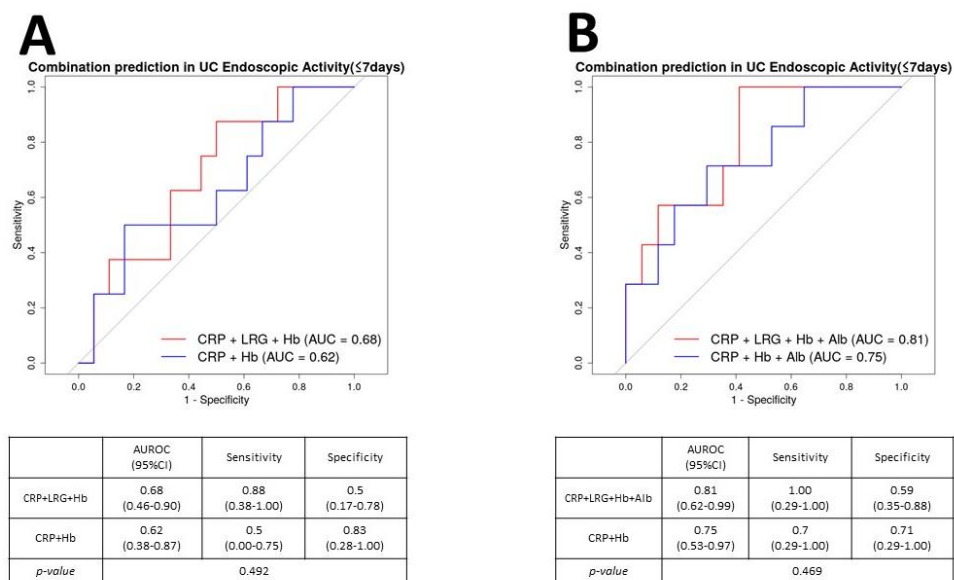
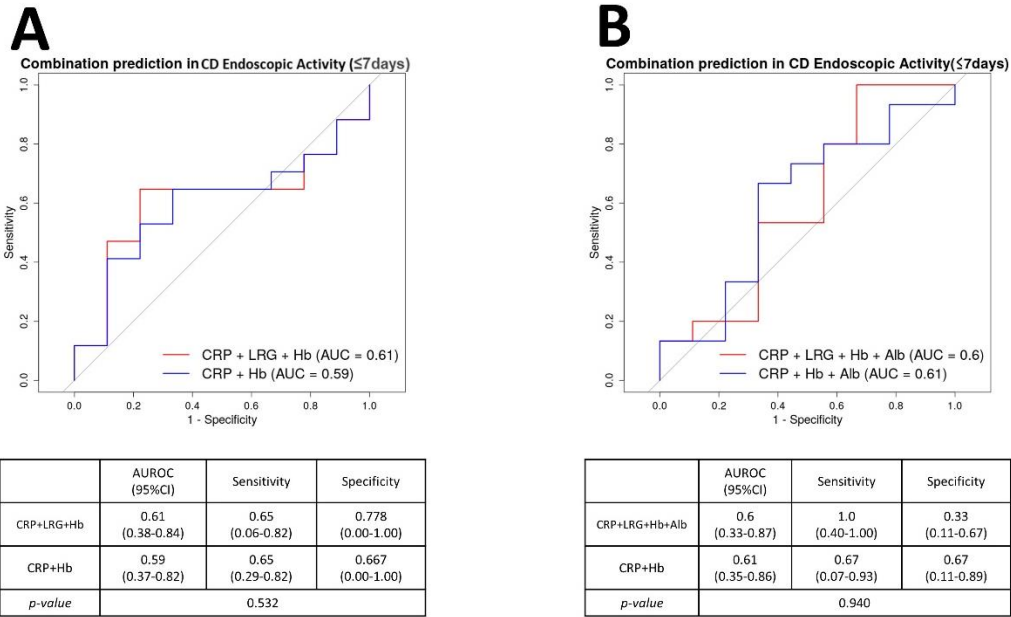


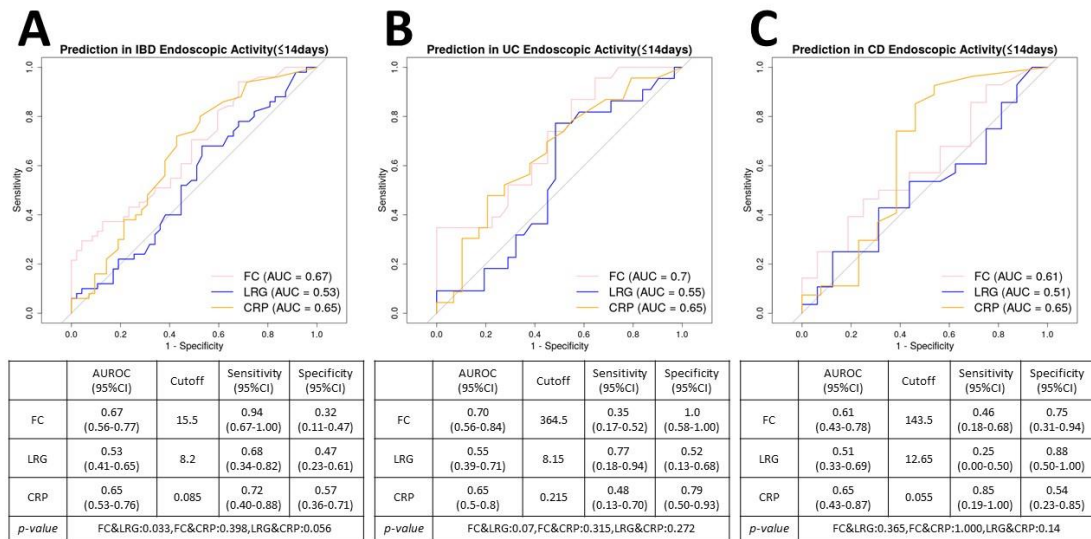
Supplementary Figure 1 Diagnostic accuracy of LRG, CRP, and FC assessed within 7 days for identifying active endoscopic disease in IBD (A), UC (B), and CD (C).



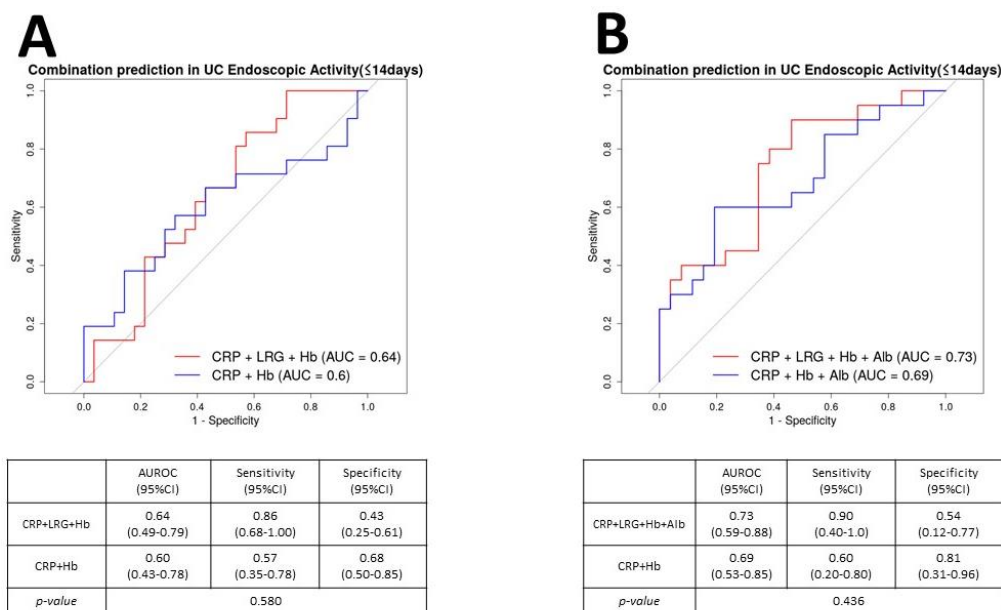
Supplementary Figure 2 Diagnostic value of CRP and Hb, with or without LRG (A), and CRP, Hb, and Alb, with or without LRG (B), measured within 7 days for detecting active endoscopic disease in UC.



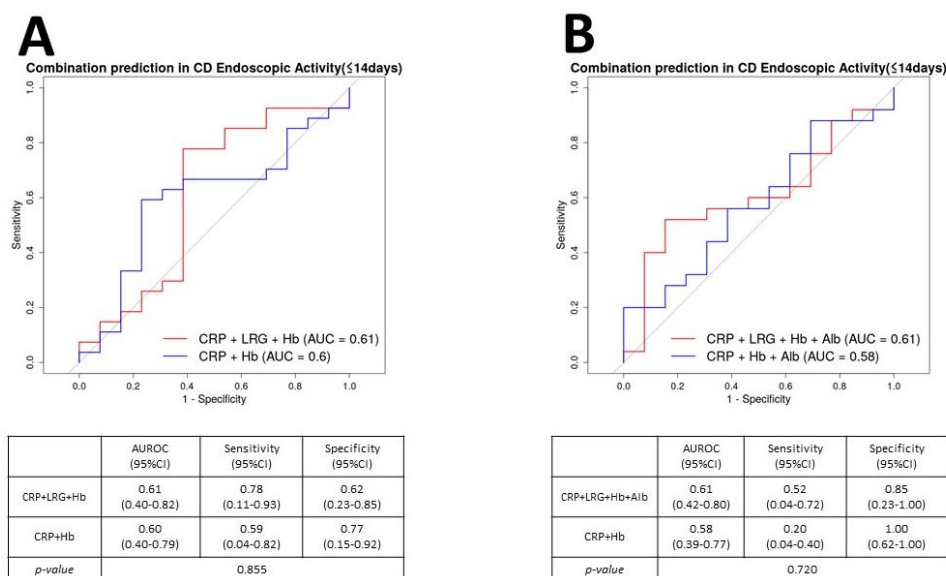
Supplementary Figure 3 Diagnostic value of CRP and Hb, with or without LRG (A), and CRP, Hb, and Alb, with or without LRG (B), measured within 7 days for detecting active endoscopic disease in CD.



Supplementary Figure 4 Diagnostic accuracy of LRG, CRP, and FC assessed within 14 days for identifying active endoscopic disease in IBD (A), UC (B), and CD (C).



Supplementary Figure 5 Diagnostic value of CRP and Hb, with or without LRG (A), and CRP, Hb, and Alb, with or without LRG (B), measured within 14 days for detecting active endoscopic disease in UC.



Supplementary Figure 6 Diagnostic value of CRP and Hb, with or without LRG (A), and CRP, Hb, and Alb, with or without LRG (B), measured within 14 days for detecting active endoscopic disease in CD.