

Prognostic relevance of β -catenin expression in T2-3N0M0 esophageal squamous cell carcinoma

Dong-Rong Situ, Yi Hu, Zhi-Hua Zhu, Jian Wang, Hao Long, Tie-Hua Rong

Dong-Rong Situ, Yi Hu, Zhi-Hua Zhu, Hao Long, Tie-Hua Rong, Department of Thoracic Surgery, Cancer Center, Sun Yat-Sen University, Guangzhou 510060, Guangdong Province, China

Jian Wang, Department of Anesthesia, Cancer Center, Sun Yat-Sen University, Guangzhou 510060, Guangdong Province, China

Author contributions: Situ DR, Hu Y and Zhu ZH contributed equally to this work; Zhu ZH, Long H and Rong TH designed the research; Situ DR, Wang J, Hu Y and Zhu ZH performed the research; Situ DR, Hu Y and Zhu ZH analyzed the data; Situ DR and Hu Y wrote the paper.

Correspondence to: Zhi-Hua Zhu, Associate Professor, Department of Thoracic Surgery, Cancer Center, Sun Yat-sen University, 651, Dongfeng Road East, Guangzhou 510060, Guangdong Province, China. zhu-zh@hotmail.com

Telephone: +86-20-87343259 Fax: +86-20-87343392

Received: August 4, 2010 Revised: August 25, 2010

Accepted: September 1, 2010

Published online: November 7, 2010

Abstract

AIM: To study the expression of β -catenin in esophageal squamous cell carcinoma (ESCC) at stage T2-3N0M0 and its relation with the prognosis of ESCC patients.

METHODS: Expression of β -catenin in 227 ESCC specimens was detected by immunohistochemistry (IHC). A reproducible semi-quantitative method which takes both staining percentage and intensity into account was applied in IHC scoring, and receiver operating characteristic curve analysis was used to select the cut-off score for high or low IHC reactivity. Then, correlation of β -catenin expression with clinicopathological features and prognosis of ESCC patients was determined.

RESULTS: No significant correlation was observed between β -catenin expression and clinicopathological parameters in terms of gender, age, tumor size, tumor grade, tumor location, depth of invasion and pathologi-

cal stage. The Kaplan-Meier survival curve showed that the up-regulated expression of β -catenin indicated a poorer post-operative survival rate of ESCC patients at stage T2-3N0M0 ($P = 0.004$), especially of those with T3 lesions ($P = 0.014$) or with stage II B diseases ($P = 0.007$). Multivariate analysis also confirmed that β -catenin was an independent prognostic factor for the overall survival rate of ESCC patients at stage T2-3N0M0 (relative risk = 1.642, 95% CI: 1.159-2.327, $P = 0.005$).

CONCLUSION: Elevated β -catenin expression level may be an adverse indicator for the prognosis of ESCC patients at stage T2-3N0M0, especially for those with T3 lesions or stage II B diseases.

© 2010 Baishideng. All rights reserved.

Key words: Esophageal squamous cell carcinoma; β -catenin; Prognosis; Receiver operating characteristic curve; Immunohistochemistry

Peer reviewer: Piero Marco Fisichella, MD, Assistant Professor of Surgery, Medical Director, Swallowing Center, Loyola University Medical Center, Department of Surgery, Stritch School of Medicine, 2160 South First Avenue, Room 3226, Maywood, IL 60153, United States

Situ DR, Hu Y, Zhu ZH, Wang J, Long H, Rong TH. Prognostic relevance of β -catenin expression in T2-3N0M0 esophageal squamous cell carcinoma. *World J Gastroenterol* 2010; 16(41): 5195-5202 Available from: URL: <http://www.wjgnet.com/1007-9327/full/v16/i41/5195.htm> DOI: <http://dx.doi.org/10.3748/wjg.v16.i41.5195>

INTRODUCTION

Esophageal carcinoma, an aggressive tumor with a poor prognosis, is one of the most common malignant tumors in Asia, especially in certain areas of China, and South

America^[1]. Esophageal squamous cell carcinoma (ESCC) accounts for over 90% of all esophageal cancers worldwide^[2]. Despite advances in imaging technologies enabling earlier diagnosis of ESCC, surgery and response rates of radiotherapy and chemotherapy, the clinical outcome of ESCC patients remains unsatisfactory. Even in the developed world, more than 85% of ESCC patients die within 2 years after its diagnosis^[3]. In China, the esophageal cancer mortality rate ranks fourth of cancer-related deaths^[4]. Thus, improvement in the efficacy of ESCC treatment is a major public health goal. New modalities based on a better understanding of the ESCC biology are indispensable. Since the classical staging criteria fail to differentiate the prognostic characteristics of ESCC patients adequately, molecular tumor analysis may provide a necessary means for defining the prognosis of ESCC patients. In order to further improve the survival rate of ESCC patients, it is essential to identify the relevant biomarkers with adverse prognostic significance, and to modify the therapeutic strategies for individual patients according to their molecular tumor status.

β -catenin is an 88kDa versatile protein that has at least two different cellular functions^[5-7]. First, β -catenin is an important structural component of both normal epithelium and malignant cells. Together with a structurally homologous γ -catenin, β -catenin participates in cell-cell and cell-matrix adhesion by binding to the intracellular domain of *E-cadherin*, a homotypic cell-to-cell interaction molecule ubiquitously expressed in epithelial cells^[6,8,9]. In addition, these catenins play an important role in cell polarity by binding to the actin filament network of cytoskeleton through *a-catenin* as a linker^[6,8]. Unlike other known catenins, β -catenin is also a key mediator in the Wnt/Wingless/Wnt signal transduction pathway^[7,8,10]. In cytoplasm of normal cells, the amount and location of β -catenin are controlled exquisitely through its association with the adenomatous polyposis coli (*APC*) tumor-suppressor gene product, a scaffolding protein *Axin*, and a glycogen synthetase kinase (*GSK-3 β*) enabling phosphorylation and degradation of free β -catenin^[6-10]. Once located in nuclei, β -catenin can act as a transcription factor by serving as a coactivator of the lymphoid enhancer factor/TCF family of DNA-binding proteins^[10]. Activation of Wnt signaling involves the inhibition of catenin degradation by proteasomes, resulting in its cytoplasmic and nuclear accumulation and transcriptional activation of the target gene^[5-7,10]. It is believed that β -catenin integrity impairment-related intracellular network may be closely associated with the dedifferentiation, hyperproliferation, invasion and metastatic potential of malignancy^[10,11]. This biomarker has thereby been extensively studied in a variety of neoplasms, such as hepatocellular carcinoma^[12], colorectal carcinoma^[13], gastric cancer^[14,15], pancreatic cancer^[16], ovarian cancer^[17], lung cancer^[18-20], breast cancer^[21], nasopharyngeal carcinoma^[22], prostate cancer^[23] and even lymphoma^[24], with regard to its potential role as a prognostic factor in cell polarity. The present findings in ESCC are controversial in the literature^[25-28].

The role of β -catenin in development of ESCC and its prognostic significance remain to be defined. In the present study, the expression level of β -catenin was measured in specimens from a relatively homogeneous cohort of ESCC patients with no lymph node involved, which was correlated with the clinical outcome of ESCC patients.

MATERIALS AND METHODS

Patients and tissue samples

The study was approved by the Ethics Committee of Sun Yat-Sen University Cancer Center. A total of 227 consecutive patients with node-negative ESCC at stage I B-II B who underwent curative surgery from January 1993 to August 2004 were enrolled in this study. β -catenin expression level was measured in resected specimens with immunohistochemistry (IHC). Patients were followed up prospectively and their survival data were recorded through October 2009. The inclusion criteria were patients with histopathologically-proven ESCC, those with esophageal cancer at T2-3N0M0 based on the seventh edition of the American Joint Committee on Cancer staging system^[29], those with at least 15 lymph nodes to be removed for pathological evaluation, those at the age of at least 18 years, those with no evidence of metastatic disease as determined by history, physical examination, and blood chemistry analysis or routine computed tomography, those with no history of adjuvant therapy. Patients with a history of previously treated cancer other than basal or squamous cell carcinoma of the skin, preoperative chemotherapy and/or radiotherapy, or with unknown causes of death in follow-up were excluded from the study.

Immunohistochemistry

β -catenin (CAT-5H10, Fuzhou Maxim Inc., Fuzhou, Fujian province, China) was diluted at 1:100. ESCC tissue was cut into 4 μ m-thick paraffin sections, which were stained with immunoperoxidase. The sections were deparaffinized in xylene, hydrated prior to antigen retrieval by microwaving in sodium citrate buffer (pH 6.0), and incubated with a peroxidase block followed by primary antibody. After washed with PBS, the sections were incubated first with secondary antibody followed by 3,3'-diaminobenzidine, and then counterstained with hematoxylin (Hematoxylin 7211; Richard-Allen Scientific, Kalamazoo, Michigan, USA). The peroxidase block, secondary antibody and 3,3'-diaminobenzidine were all obtained from the Dako-Cytomation EnVision System (Glostrup, Denmark).

Immunohistochemical scoring

β -catenin was scored with IHC using a semi-quantitative system as previously described^[30,31]. Each section was assigned a score and the score of tumor cell staining was multiplied by the score of staining intensity. Tumor cell staining was scored using a semi-quantitative six-category grading system: 0 = no tumor cell staining, 1 = 1%-10% of tumor cells staining, 2 = 11%-25% of tumor cells staining, 3 =

26%-50% of tumor cells staining, 4 = 51%-75% of tumor cells staining, 5 = over 75% of tumor cells staining. Stain intensity was scored using a semi-quantitative four-category grading system: 0 = no staining, 1 = weak staining, 2 = moderate staining, 3 = strong staining. Two experienced pathologists blinded to the clinical follow-up data independently scored the 400 ESCC samples including the cases used in this study. The complete score agreement of the two pathologists was 87% of all cases, indicating that the scoring method is reasonably reproducible. A third blinded pathologist intervened and evaluated the patients with different IHC scores. If the third pathologist agreed with one of the previous scores, it was used for analysis. The three pathologists were asked to reach an agreement on the cases from which three different scores were obtained.

Selection of cut-off scores

Cut-off scores for β -catenin expression were selected based on receiver operating characteristic (ROC) curve analysis. ROC curve was plotted for the outcome of ESCC patients under study by calculating the sensitivity and specificity on its points. The score closest to the points (0.0, 1.0) on the curve with a maximum sensitivity and specificity was selected as the cut-off score leading to the greatest number of tumors classified with or without clinical outcome. The area under the ROC curve was calculated to estimate the discriminatory power of β -catenin over the entire range of scores for overall survival (OS) rate of ESCC patients. The ROC curve was generated and analyzed using the MedCalc statistical software package 11.0.1 (MedCalc Software bvba, Belgium).

Statistical analysis

Association between categorical variables was analyzed by χ^2 test. Survival curves were calculated with the Kaplan-Meier method and compared by the log-rank test. Time of death was calculated from the date of surgery to the date of death. The time variable was censored on the date of last follow-up of event-free subjects. Multivariate analysis of prognostic factors was performed using the Cox's regression model. $P < 0.05$ was considered statistically significant. All statistical analyses were performed using the SPSS 13.0 for Windows software system (SPSS Inc., Chicago, IL).

RESULTS

Characteristics of patients and expression of β -catenin

The demographic and clinicopathological parameters of ESCC patients included in this study are listed in Table 1. Various intensities of positive β -catenin reaction were detected in cytoplasm and membrane of cancer cells (Figure 1). According to the ROC curves for OS rate, a threshold value of 1.3333 was the optimal point for maximum sensitivity and specificity, and selected as the cut-off score (Figure 2). The 227 ESCC specimens were then catego-

Table 1 Demographic and clinicopathological parameters of esophageal squamous cell carcinoma patients included in this study *n* (%)

Demographic and clinicopathological parameters	Patients with ESCC
Sex	
Male	165 (72.7)
Female	62 (27.3)
Age (yr)	
Median	58
Range	33-77
Tumor size (cm)	4.92 \pm 2.046
Tumor grade	
Grade 1	57 (25.1)
Grade 2	114 (50.2)
Grade 3	56 (24.7)
Tumor location	
Upper	25 (11.0)
Middle	152 (67.0)
Lower	50 (22.0)
Depth of invasion	
T2	88 (38.8)
T3	139 (61.2)
AJCC staging system (7th ed)	
I B	12 (5.3)
II A	83 (36.6)
II B	132 (58.1)

ESCC: Esophageal squamous cell carcinoma; AJCC: American Joint Committee on Cancer.

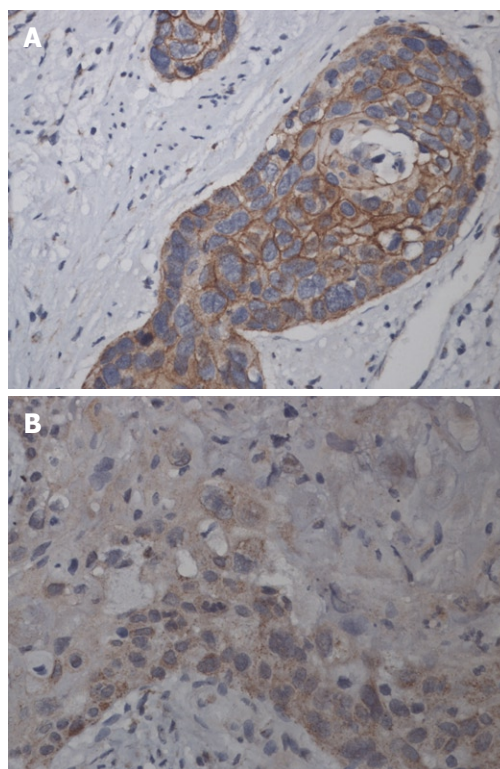


Figure 1 Expression of β -catenin in esophageal squamous cell carcinoma tissue samples (magnification \times 400). A: Immunohistochemical staining of β -catenin in cytoplasm and membrane of cancer cells (immunohistochemistry score: 15); B: Immunohistochemical staining of β -catenin in cytoplasm of cancer cells (immunohistochemistry score: 3).

Table 2 β -catenin expression in esophageal squamous cell carcinoma patients *n* (%)

Parameters of ESCC patients	<i>n</i>	Expression of β -catenin		<i>P</i> -value
		Low	High	
Sex				
Male	165	57 (34.5)	108 (65.5)	0.354
Female	62	26 (41.9)	36 (58.1)	
Age (yr)				
≤ 60	138	49 (35.5)	89 (64.5)	0.778
> 60	89	34 (38.2)	55 (61.8)	
Tumor size (cm)				
≤ 5.0	155	54 (34.8)	101 (65.2)	0.461
> 5.0	72	29 (40.3)	43 (59.7)	
Tumor grade				
Grade 1	57	17 (29.8)	40 (70.2)	0.473
Grade 2	114	44 (38.6)	70 (61.4)	
Grade 3	56	22 (39.3)	34 (60.7)	
Tumor location				
Upper	25	11 (44.0)	14 (56.0)	0.545
Middle	152	52 (34.2)	100 (65.8)	
Lower	50	20 (40.0)	30 (60.0)	
Depth of invasion				
T2	88	34 (38.6)	54 (61.4)	0.672
T3	139	49 (35.3)	90 (64.7)	
AJCC staging system (7th ed)				
I B	12	3 (25.0)	9 (75.0)	0.694
II A	83	31 (37.3)	52 (62.7)	
II B	132	49 (37.1)	83 (62.9)	

ESCC: Esophageal squamous cell carcinoma; AJCC: American Joint Committee on Cancer.

alized into high and low β -catenin expression groups. The expression level of β -catenin was up-regulated in 144 cases (63.4%) and down-regulated in 83 cases (36.6%).

Correlation between β -catenin expression and clinicopathological features

The correlation between β -catenin expression in and clinicopathological features of ESCC patients are shown in Table 2. No significant correlation was identified between β -catenin expression and any clinicopathological parameters, including gender, age, tumor size, tumor grade, tumor location, depth of invasion and pathological stage based on the seventh edition of AJCC staging system^[29].

β -catenin expression and survival rate

At the time of data analysis (October 2009), 72 patients (31.7%), with a median follow-up time of 32 mo (range 5-138 mo), remained alive and 155 patients (68.3%) died. The overall 1-, 3- and 5-year survival rates for the patients were 58%, 39%, and 33%, respectively.

The Kaplan-Meier survival curves (Figure 3) showed that the post-operative survival rate of patients with a low β -catenin expression level was significantly higher than that of those with a high β -catenin expression level (*P* = 0.004). Further stratified analysis split by depth of invasion (Figure 4) showed that the expression of β -catenin had a statistically significant influence on the survival rate of patients with T3 diseases (*P* = 0.014) rather than on the survival rate of

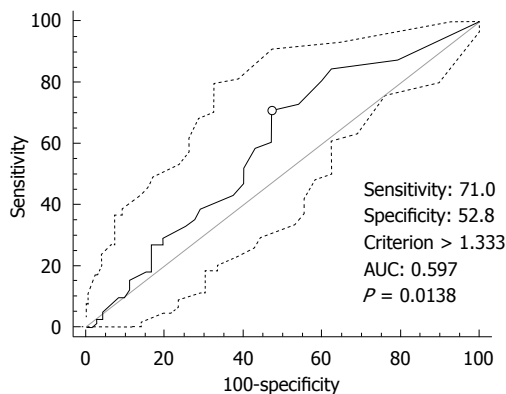


Figure 2 Receiver operating characteristic curve analysis of β -catenin and selection of cut-off score.

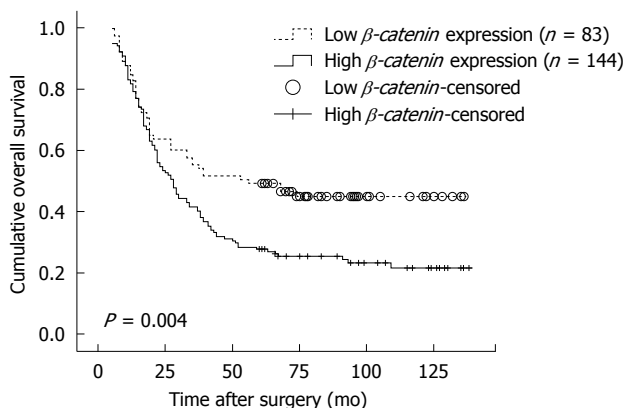


Figure 3 Kaplan-Meier survival curves for patients with esophageal squamous cell carcinoma at stage T2-3N0M0 according to β -catenin expression.

those with T2 lesions (*P* = 0.145). Furthermore, the stratified analysis split by pathological stage based on the new staging system (Figure 5) revealed that β -catenin expression had a significant influence on the prognosis of patients with ESCC at stage II B (*P* = 0.007) but not on the prognosis of those with II A diseases (*P* = 0.253). Patients with ESCC at stage I B were not included in this analysis due to a small sample size.

Factors involved in OS rate of ESCC patients were identified using the Cox proportional hazards model (Table 3). Univariate analysis showed that tumor grade, depth of invasion and β -catenin expression were found to be the significant prognostic indicators for the OS rate of ESCC patients, and thereby selected as the parameters to be included in the same Cox regression model. Further multivariate analysis also confirmed that β -catenin expression (relative risk = 1.642, 95% CI: 1.159-2.327, *P* = 0.005), tumor grade (relative risk = 1.549, 95% CI: 1.095-2.190, *P* = 0.013) and depth of invasion (relative risk = 1.493, 95% CI: 1.066-2.089, *P* = 0.020) were the independent prognostic factors for the OS rate of ESCC patients.

DISCUSSION

To date, several IHC studies have been performed in order

Table 3 Univariate and multivariate analysis of overall survival rate of esophageal squamous cell carcinoma patients with Cox proportional hazards model

Variable	Univariate analysis			Multivariate analysis		
	Hazard ratio	95% CI	P-value	Hazard ratio	95% CI	P-value
Age (yr)						
≤ 60 vs > 60	1.023	0.740-1.414	0.889			
Gender						
Male vs female	0.692	0.474-1.009	0.056			
Tumor size (cm)						
≤ 5 vs > 5	0.987	0.704-1.386	0.942			
Grade						
G1 vs G2 and 3	1.498	1.060-2.116	0.022 ^a	1.549	1.095-2.190	0.013 ^a
Tumor location						
Upper and middle vs lower	0.954	0.657-1.385	0.804			
Depth of invasion						
T2 vs T3	1.461	1.045-2.043	0.026 ^a	1.493	1.066-2.089	0.020 ^a
AJCC staging system (7th ed)						
I B and II A vs II B	1.192	0.865-1.643	0.284			
β -catenin						
Low vs high	1.644	1.161-2.329	0.005 ^b	1.642	1.159-2.327	0.005 ^b

^a $P < 0.05$, ^b $P < 0.01$ vs univariate analysis. AJCC: American Joint Committee on Cancer; CI: Confidence interval.

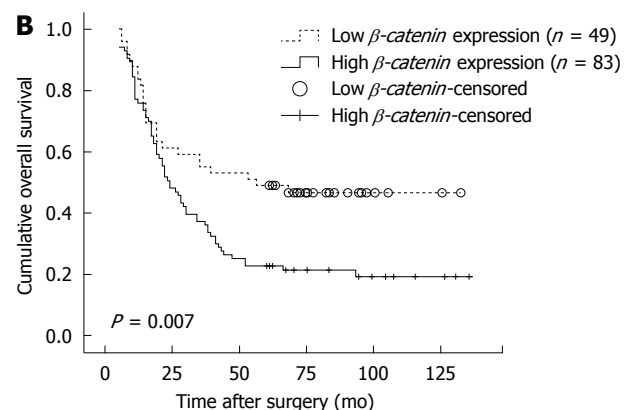
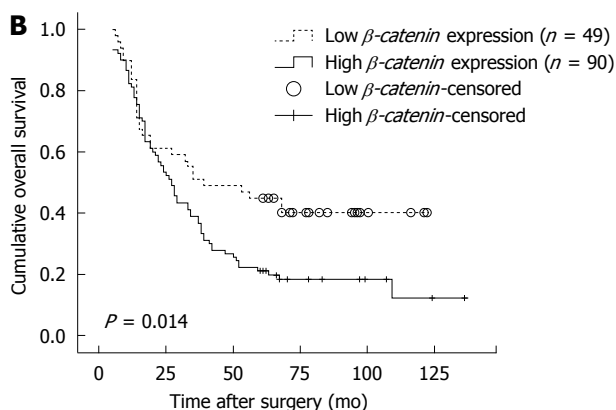
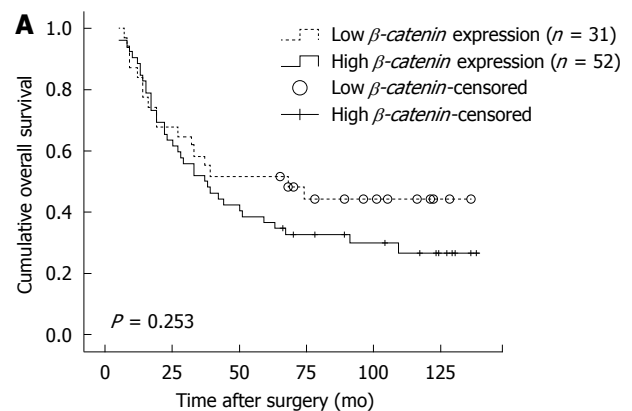
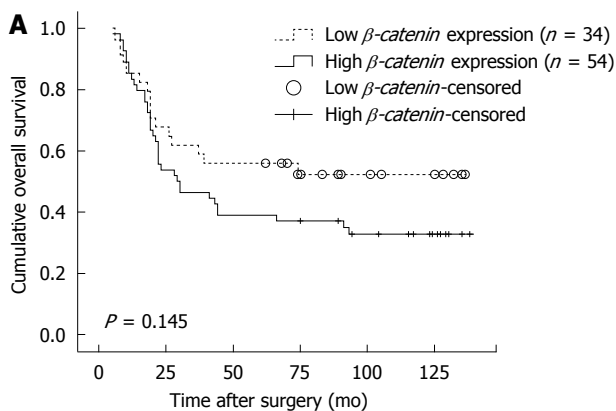


Figure 4 Kaplan-Meier survival curves for patients with esophageal squamous cell carcinoma according to β -catenin expression. A: Correlation between β -catenin expression and post-operative survival rate of patients with T2 lesions; B: Correlation between β -catenin expression and post-operative survival rate of patients with T3 lesions.

Figure 5 Kaplan-Meier survival curves for patients with esophageal squamous cell carcinoma stratified for pathological stage according to β -catenin expression. A: Correlation between β -catenin expression and post-operative survival rate of patients with II A diseases; B: Correlation between β -catenin expression and post-operative survival rate of patients with II B diseases.

to elucidate the role of β -catenin in ESCC, but the current findings in terms of its expression pattern and potential involvement in formation and progression of ESCC are contradictory in the literature^[25-28]. One problem faced by

researchers is the determination of tumor immunohistochemical positivity for β -catenin which is clinically and biologically relevant. Previous studies have applied different scoring systems in predetermination of cut-off scores

which might be set arbitrarily^[30-33]. A lack of consistent, widely applicable methodology may have been primarily responsible for the contradictory results of these studies evaluating β -catenin and its prognostic value in ESCC patients. Therefore, our study used a reproducible scoring method which takes both staining percentage and intensity into account, and the cut-off score was selected based on ROC curve analysis, so that the trade-off between sensitivity and specificity was the smallest, leading to the greatest overall number of correctly classified tumors with and without clinical outcome.

In the present study, univariate and multivariate analyses showed that high expression level of β -catenin in completely resected samples from patients with ESCC at stage T2-3N0M0 was significantly correlated with the worse post-operative survival rate of ESCC patients, which is consistent with the reported findings^[27]. Krishnadath *et al*^[34] reported that low expression level of β -catenin is significantly correlated with the poor prognosis of esophageal adenocarcinoma patients, especially at early-stage. It has been shown that the higher the expression level of β -catenin is, the better the outcome of esophageal adenocarcinoma patients is, and the β -catenin expression level is higher in more invasive tumors than in superficial tumors^[35]. However, Zhao *et al*^[26] and Lin *et al*^[28] demonstrated that β -catenin expression does not imply more aggressive malignant behaviors of ESCC or predict the poor prognosis of ESCC patients. Krishnadath *et al*^[34] and Osterheld *et al*^[35] showed a different histological type of tumor (adenocarcinoma) when they analyzed these contradictory results. In addition, esophageal carcinoma at stages I-IV was involved in the studies^[26,28,34,35], suggesting that different therapeutic strategies including adjuvant or neoadjuvant chemotherapy and radiotherapy for more advanced disease may introduce confounding factors affecting the application of molecular analysis in assessing the prognosis of ESCC patients.

β -catenin protein not only serves as a pivotal component of *E-cadherin/catenin* complex which participates in cell-cell and cell-matrix adhesion^[6,8,9], but also as a key mediator in the Wntless/Wnt signal transduction pathway^[5,7], indicating that disruption of *E-cadherin/catenin* complex or physical and functional loss of β -catenin protein can lead to loosening of cell-cell contact and promote tumor invasion and metastasis. On the other hand, β -catenin can be oncogenically activated either by direct gene mutation^[36] and inactivation of the *APC* tumor suppressor^[37], or by activation of the Wntless/Wnt signal transduction pathway^[38], thus resulting in post-translational stabilization of β -catenin protein. Excess cytoplasmic accumulation of β -catenin protein can then increase the influx of this molecule into nuclei, leading to over-expression of tumor-promoting genes, such as *cyclin-D1* and *c-myc*^[5,6], and promote cell mitosis and growth^[39,40]. Therefore, either up-regulated or down-regulated expression of β -catenin contributes to invasive and metastatic potentials of esophageal cancer. Obviously, the question is which physiopathological process takes the advantage in different circumstances, such

as different histological types or different pathological stages. Further analysis of the role of β -catenin gene and its products in formation and progression of esophageal carcinomas may provide a better understanding of this pathogenic process.

In this study, further stratified analysis split by pathological stage and depth of invasion showed that β -catenin exhibited its effect on the prognosis of patients with ESCC at stage II B or with T3 lesions, indicating that this biomarker is more valuable in predicting the outcome of ESCC patients at advanced stages, which is consistent with the findings in other studies^[12,22]. Further study is needed to verify this trend. In this study, no significant correlation was found between β -catenin expression and prognostic parameters, including tumor grade, tumor location, depth of invasion and pathological stage. Multivariate survival analysis of all potential prognostic variables also confirmed that β -catenin was an absolutely independent prognostic factor, which is in accordance with the reported findings^[25,28]. However, other studies showed that β -catenin is significantly correlated with the accepted prognostic parameters of ESCC^[26,27,41]. Further study with a large sample size is needed to obtain a clearer picture.

In conclusion, elevated β -catenin expression level is an adverse prognostic factor for ESCC patients at stage T2-3N0M0, especially for those with T3 lesions or with stage II B diseases. However, further study with a larger cohort of patients is required to verify this observation, especially in view of the contradictory results.

COMMENTS

Background

Esophageal squamous cell carcinoma (ESCC), an aggressive tumor with a poor prognosis, is one of the most common malignant tumors in Asia, especially in certain areas of China. Despite advances in early diagnosis and therapies, the clinical outcome of ESCC patients remains unsatisfactory. Since the classical staging criteria fail to differentiate prognostic characteristics of ESCC patients adequately, many efforts have been made to identify relevant biomarkers with adverse prognostic significance, and to modify therapeutic strategies for individual patients. β -catenin, as a prognostic factor for ESCC, has been extensively studied in a variety of neoplasms. However, the exact role of β -catenin and its prognostic significance in ESCC remain to be defined.

Research frontiers

β -catenin protein not only serves as a pivotal component of *E-cadherin/catenin* complex which participates in cell-cell and cell-matrix adhesion, but also as a key mediator in the Wntless/Wnt signal transduction pathway. The hotspot in molecular tumor analysis of β -catenin is whether β -catenin involves and how it involves in the formation and progression of esophageal carcinoma.

Innovations and breakthroughs

Previous immunohistochemistry studies showed contradictory results in β -catenin expression pattern and its prognostic value for ESCC, due to lack of consistent, widely applicable methods. Therefore, the present study used a reproducible scoring method which takes both staining percentage and intensity into account, and the cut-off score was selected based on receiver operating characteristic (ROC) curve analysis so that the trade-off between sensitivity and specificity was the smallest, leading to the greatest overall number of correctly classified tumors with and without clinical outcome. This is the first study to evaluate β -catenin expression in ESCC patients with this novel method, showing that elevated β -catenin expression is an adverse prognostic factor for ESCC patients at stage T2-3N0M0, especially for those with T3 lesions or stage II B diseases.

Applications

The novel methods used in this study can be applied in treatment of ESCC patients at stage T2-3N0M0.

Terminology

ROC curve analysis: In signal detection theory, a ROC curve is a graphical plot of the sensitivity, or true positivity vs (1-specificity), or false positivity for a binary classifier system as its discrimination threshold is varied. The ROC curve can also be represented equivalently by plotting the fraction of true positivity (TPR = true positive rate) vs the fraction of false positivity (FPR = false positive rate). ROC curve analysis provides tools to select possibly optimal models and to discard suboptimal ones independently from (and prior to specifying) the cost context or the class distribution. ROC curve analysis is related in a direct and natural way to cost/benefit analysis of diagnostic decision making. β -catenin: β -catenin protein was originally identified as a component of adherence junction, a multi-protein complex supporting tight cell-cell contacts in the presence of extracellular calcium. However, β -catenin also plays a key role in the Wnt signaling transduction pathway.

Peer review

The authors studied the expression of β -catenin in ESCC at stage T2-3N0M0 and its prognostic significance by analyzing the expression of β -catenin in 227 ESCC specimens with IHC and ROC curve analysis to select the cut-off score for high or low IHC reactivity. Then, they correlated the β -catenin expression with clinicopathological features of ESCC patients and its relation with the prognosis of ESCC patients. No significant correlation was observed between β -catenin expression in and clinicopathological parameters of ESCC patients, but multivariate analysis confirmed that β -catenin was an independent prognostic factor for the overall survival rate of ESCC patients at stage T2-3N0M0. The manuscript reads nicely and is easy to follow. Tables are legible and easy to understand. I believe that the method used in this study is plausible and the conclusion is well supported by the data. This manuscript adds to the current knowledge on this topic and it is a pleasure to read it.

REFERENCES

- Jemal A, Siegel R, Ward E, Hao Y, Xu J, Thun MJ. Cancer statistics, 2009. *CA Cancer J Clin* 2009; **59**: 225-249
- Stoner GD, Gupta A. Etiology and chemoprevention of esophageal squamous cell carcinoma. *Carcinogenesis* 2001; **22**: 1737-1746
- Munro AJ. Oesophageal cancer: a view over overviews. *Lancet* 2004; **364**: 566-568
- Su M, Lu SM, Tian DP, Zhao H, Li XY, Li DR, Zheng ZC. Relationship between ABO blood groups and carcinoma of esophagus and cardia in Chaoshan inhabitants of China. *World J Gastroenterol* 2001; **7**: 657-661
- Conacci-Sorrell M, Zhurinsky J, Ben-Ze'ev A. The cadherin-catenin adhesion system in signaling and cancer. *J Clin Invest* 2002; **109**: 987-991
- Hajra KM, Fearon ER. Cadherin and catenin alterations in human cancer. *Genes Chromosomes Cancer* 2002; **34**: 255-268
- Nelson WJ, Nusse R. Convergence of Wnt, beta-catenin, and cadherin pathways. *Science* 2004; **303**: 1483-1487
- Bremnes RM, Veve R, Hirsch FR, Franklin WA. The E-cadherin cell-cell adhesion complex and lung cancer invasion, metastasis, and prognosis. *Lung Cancer* 2002; **36**: 115-124
- Hanahan D, Weinberg RA. The hallmarks of cancer. *Cell* 2000; **100**: 57-70
- Polakis P. The oncogenic activation of beta-catenin. *Curr Opin Genet Dev* 1999; **9**: 15-21
- Kudo Y, Kitajima S, Ogawa I, Hiraoka M, Sargolzaei S, Keikhae MR, Sato S, Miyauchi M, Takata T. Invasion and metastasis of oral cancer cells require methylation of E-cadherin and/or degradation of membranous beta-catenin. *Clin Cancer Res* 2004; **10**: 5455-5463
- Zhai B, Yan HX, Liu SQ, Chen L, Wu MC, Wang HY. Reduced expression of E-cadherin/catenin complex in hepatocellular carcinomas. *World J Gastroenterol* 2008; **14**: 5665-5673
- Elzagheid A, Buhmeida A, Korkeila E, Collan Y, Syrjanen K, Pyrhonen S. Nuclear beta-catenin expression as a prognostic factor in advanced colorectal carcinoma. *World J Gastroenterol* 2008; **14**: 3866-3871
- Pan KF, Liu WG, Zhang L, You WC, Lu YY. Mutations in components of the Wnt signaling pathway in gastric cancer. *World J Gastroenterol* 2008; **14**: 1570-1574
- Cheng XX, Wang ZC, Chen XY, Sun Y, Kong QY, Liu J, Li H. Correlation of Wnt-2 expression and beta-catenin intracellular accumulation in Chinese gastric cancers: relevance with tumour dissemination. *Cancer Lett* 2005; **223**: 339-347
- Li YJ, Ji XR. Relationship between expression of E-cadherin-catenin complex and clinicopathologic characteristics of pancreatic cancer. *World J Gastroenterol* 2003; **9**: 368-372
- Faleiro-Rodrigues C, Macedo-Pinto I, Pereira D, Ferreira VM, Lopes CS. Association of E-cadherin and beta-catenin immunorexpression with clinicopathologic features in primary ovarian carcinomas. *Hum Pathol* 2004; **35**: 663-669
- Smythe WR, Williams JP, Wheelock MJ, Johnson KR, Kaiser LR, Albelda SM. Cadherin and catenin expression in normal human bronchial epithelium and non-small cell lung cancer. *Lung Cancer* 1999; **24**: 157-168
- Leinonen T, Pirinen R, Böhm J, Johansson R, Ropponen K, Kosma VM. Expression of matrix metalloproteinases 7 and 9 in non-small cell lung cancer. Relation to clinicopathological factors, beta-catenin and prognosis. *Lung Cancer* 2006; **51**: 313-321
- Choi YS, Shim YM, Kim SH, Son DS, Lee HS, Kim GY, Han J, Kim J. Prognostic significance of E-cadherin and beta-catenin in resected stage I non-small cell lung cancer. *Eur J Cardiothorac Surg* 2003; **24**: 441-449
- Jiang Y, Zou L, Zhang C, He S, Cheng C, Xu J, Lu W, Zhang Y, Zhang H, Wang D, Shen A. PPARgamma and Wnt/beta-catenin pathway in human breast cancer: expression pattern, molecular interaction and clinical/prognostic correlations. *J Cancer Res Clin Oncol* 2009; **135**: 1551-1559
- Zheng Z, Pan J, Chu B, Wong YC, Cheung AL, Tsao SW. Downregulation and abnormal expression of E-cadherin and beta-catenin in nasopharyngeal carcinoma: close association with advanced disease stage and lymph node metastasis. *Hum Pathol* 1999; **30**: 458-466
- Richmond PJ, Karayiannakis AJ, Nagafuchi A, Kaisary AV, Pignatelli M. Aberrant E-cadherin and alpha-catenin expression in prostate cancer: correlation with patient survival. *Cancer Res* 1997; **57**: 3189-3193
- Groen RW, Oud ME, Schilder-Tol EJ, Overdijk MB, ten Berge D, Nusse R, Spaargaren M, Pals ST. Illegitimate WNT pathway activation by beta-catenin mutation or autocrine stimulation in T-cell malignancies. *Cancer Res* 2008; **68**: 6969-6977
- Ninomiya I, Endo Y, Fushida S, Sasagawa T, Miyashita T, Fujimura T, Nishimura G, Tani T, Hashimoto T, Yagi M, Shimizu K, Ohta T, Yonemura Y, Inoue M, Sasaki T, Miwa K. Alteration of beta-catenin expression in esophageal squamous-cell carcinoma. *Int J Cancer* 2000; **85**: 757-761
- Zhao XJ, Li H, Chen H, Liu YX, Zhang LH, Liu SX, Feng QL. Expression of e-cadherin and beta-catenin in human esophageal squamous cell carcinoma: relationships with prognosis. *World J Gastroenterol* 2003; **9**: 225-232
- Ji L, Cao XF, Wang HM, Li YS, Zhu B, Xiao J, Wang D. Expression level of beta-catenin is associated with prognosis of esophageal carcinoma. *World J Gastroenterol* 2007; **13**: 2622-2625
- Lin YC, Wu MY, Li DR, Wu XY, Zheng RM. Prognostic and clinicopathological features of E-cadherin, alpha-catenin, beta-catenin, gamma-catenin and cyclin D1 expression in human esophageal squamous cell carcinoma. *World J Gastroenterol* 2004; **10**: 3235-3239
- Hsu PK, Wu YC, Chou TY, Huang CS, Hsu WH. Comparison of the 6th and 7th editions of the American Joint Committee on Cancer tumor-node-metastasis staging system in patients with resected esophageal carcinoma. *Ann Thorac Surg* 2010; **89**: 1024-1031
- Situ D, Long H, Lin P, Zhu Z, Wang J, Zhang X, Xie Z, Rong T.

- Expression and prognostic relevance of CD44v6 in stage I non-small cell lung carcinoma. *J Cancer Res Clin Oncol* 2010; **136**: 1213-1219
- 31 **Zhu ZH**, Sun BY, Ma Y, Shao JY, Long H, Zhang X, Fu JH, Zhang LJ, Su XD, Wu QL, Ling P, Chen M, Xie ZM, Hu Y, Rong TH. Three immunomarker support vector machines-based prognostic classifiers for stage IB non-small-cell lung cancer. *J Clin Oncol* 2009; **27**: 1091-1099
- 32 **Hanley JA**. Receiver operating characteristic (ROC) methodology: the state of the art. *Crit Rev Diagn Imaging* 1989; **29**: 307-335
- 33 **Zlobec I**, Steele R, Terracciano L, Jass JR, Lugli A. Selecting immunohistochemical cut-off scores for novel biomarkers of progression and survival in colorectal cancer. *J Clin Pathol* 2007; **60**: 1112-1116
- 34 **Krishnadath KK**, Tilanus HW, van Blankenstein M, Hop WC, Kremers ED, Dinjens WN, Bosman FT. Reduced expression of the cadherin-catenin complex in oesophageal adenocarcinoma correlates with poor prognosis. *J Pathol* 1997; **182**: 331-338
- 35 **Osterheld MC**, Bian YS, Bosman FT, Benhattar J, Fontollet C. Beta-catenin expression and its association with prognostic factors in adenocarcinoma developed in Barrett esophagus. *Am J Clin Pathol* 2002; **117**: 451-456
- 36 **Sparks AB**, Morin PJ, Vogelstein B, Kinzler KW. Mutational analysis of the APC/beta-catenin/Tcf pathway in colorectal cancer. *Cancer Res* 1998; **58**: 1130-1134
- 37 **Tanaka S**, Akiyoshi T, Mori M, Wands JR, Sugimachi K. A novel frizzled gene identified in human esophageal carcinoma mediates APC/beta-catenin signals. *Proc Natl Acad Sci USA* 1998; **95**: 10164-10169
- 38 **Mizushima T**, Nakagawa H, Kamberov YG, Wilder EL, Klein PS, Rustgi AK. Wnt-1 but not epidermal growth factor induces beta-catenin/T-cell factor-dependent transcription in esophageal cancer cells. *Cancer Res* 2002; **62**: 277-282
- 39 **Ilyas M**, Tomlinson IP. The interactions of APC, E-cadherin and beta-catenin in tumour development and progression. *J Pathol* 1997; **182**: 128-137
- 40 **Nakamura Y**. Cleaning up on beta-catenin. *Nat Med* 1997; **3**: 499-500
- 41 **Norwood MG**, Bailey N, Nanji M, Gillies RS, Nicholson A, Ubhi S, Darnton JJ, Steyn RS, Womack C, Hughes A, Hemingway D, Harrison R, Waters R, Jankowski JA. Cytoplasmic beta-catenin accumulation is a good prognostic marker in upper and lower gastrointestinal adenocarcinomas. *Histopathology* 2010; **57**: 101-111

S- Editor Sun H L- Editor Wang XL E- Editor Zheng XM