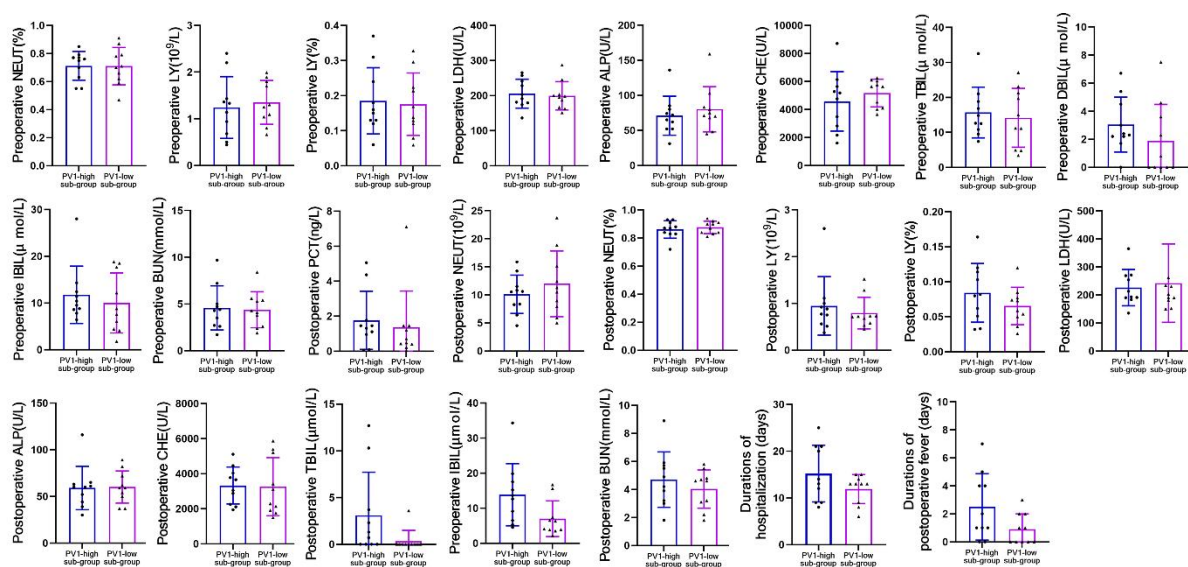


Supplementary Figure 1 Resected intestinal tissues and sample collection. A: Control group. Tissue samples from the control group were collected from the proximal incisional margin of the intestinal tissue; B: Intestinal obstruction (IO) group. Tissue samples from the IO group were obtained from areas proximal to the obstruction.



Supplementary Figure 2 Comparison of the residual infection indicators, liver and renal functions and clinical prognosis between PV1-high sub-group and PV1-low sub-group among intestinal obstruction patients.

Supplementary Table 1 Correlations of PV1 with infection indicators, liver and renal functions and clinical prognosis among intestinal obstruction patients

| Preoperative infection indicators | | | | | | | | | | |
|---|------------------------------|-------|-------|--|-------|---|-------|----------------------------------|-------|------|
| Variables | PCT | CRP | WBC | NEUT% | LY% | NEUT | LY | | | |
| r | 0.54 | 0.79 | 0.53 | 0.08 | -0.07 | 0.34 | -0.14 | | | |
| P | <0.01 | <0.01 | <0.01 | 0.61 | 0.62 | 0.02 | 0.36 | | | |
| Postoperative infection indicators | | | | | | | | | | |
| Variables | PCT | CRP | WBC | NEUT% | LY% | NEUT | LY | | | |
| r | 0.23 | 0.59 | 0.45 | 0.09 | 0.13 | 0.44 | 0.06 | | | |
| P | 0.07 | <0.01 | 0.02 | 0.58 | 0.42 | 0.02 | 0.70 | | | |
| Preoperative liver and renal functions | | | | | | | | | | |
| Variables | ALT | AST | LDH | ALP | CHE | TBIL | DBIL | IBIL | BUN | CREA |
| r | 0.78 | 0.65 | -0.13 | -0.01 | -0.27 | 0.14 | 0.22 | 0.17 | -0.08 | 0.45 |
| P | <0.01 | <0.01 | 0.41 | 0.95 | 0.08 | 0.39 | 0.17 | 0.29 | 0.45 | 0.02 |
| Postoperative liver and renal functions | | | | | | | | | | |
| Variables | ALT | AST | LDH | ALP | CHE | TBIL | DBIL | IBIL | BUN | CREA |
| r | 0.34 | 0.56 | 0.09 | 0.09 | -0.24 | 0.36 | 0.42 | 0.40 | 0.11 | 0.45 |
| P | 0.03 | <0.01 | 0.59 | 0.59 | 0.13 | 0.02 | 0.02 | 0.02 | 0.47 | 0.02 |
| Clinical prognosis | | | | | | | | | | |
| Variables | Durations of hospitalization | | | Durations of postoperative hospitalization | | Durations of postoperative antibiotic use | | Durations of postoperative fever | | |
| r | 0.13 | | | 0.39 | | 0.34 | | 0.41 | | |
| P | 0.41 | | | 0.02 | | 0.03 | | 0.01 | | |