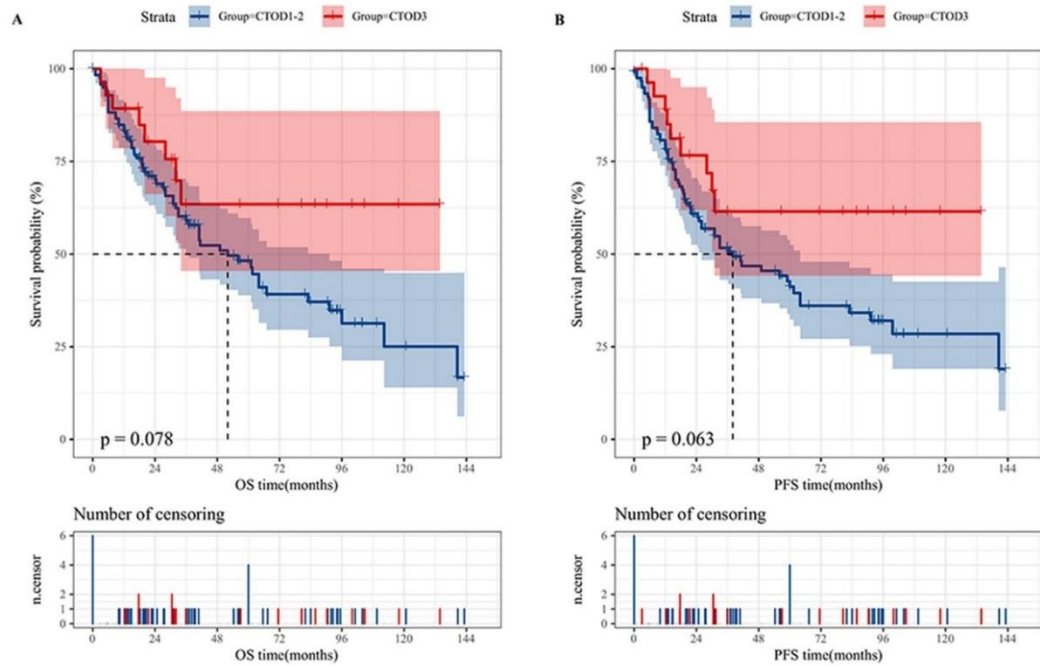
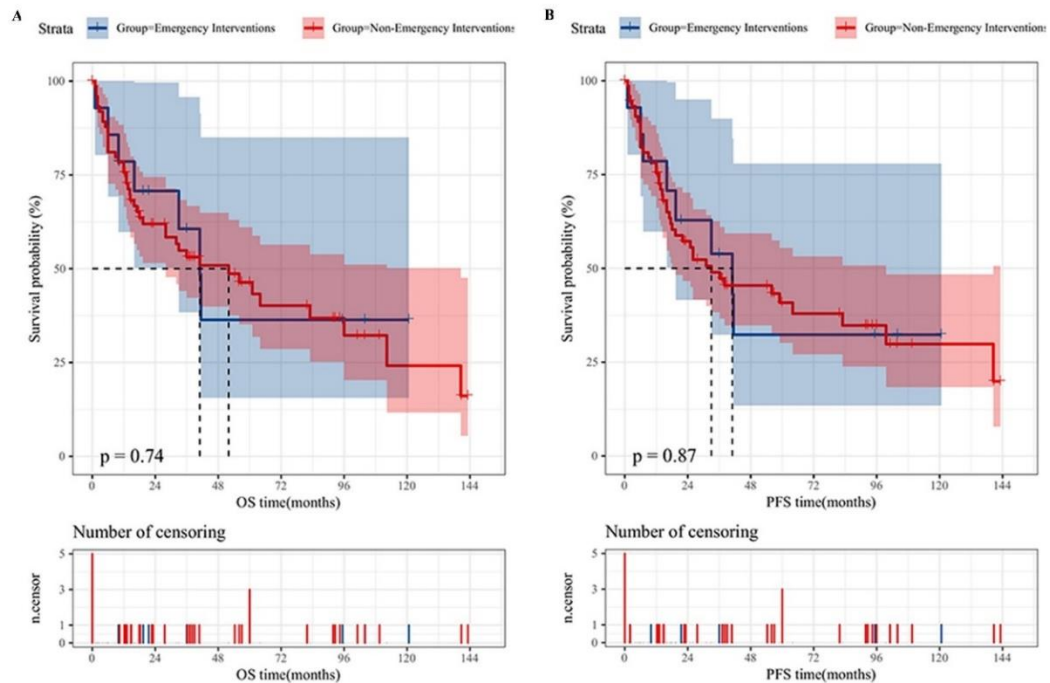


## Supplementary Figures and Tables



**Supplementary Figure 1 Overall survival and progression-free survival between the computed tomography-based obstructive degree 3 and computed tomography-based obstructive degree 1-2 groups. A: Overall survival; B: Progression-free survival. CTOD: Computed tomography-based obstructive degree; OS: Overall survival; PFS: Progression-free survival.**



**Supplementary Figure 2 Overall survival and Progression-free survival between the emergency interventions and no-emergency interventions groups.** A: Overall survival; B: Progression-free survival. OS: Overall survival; PFS: Progression-free survival.

**Supplementary Table 1 Computed tomography -based obstructive degree and the colorectal obstruction scoring system and composition**

	<b>CTOD 1</b>	<b>CTOD 2</b>	<b>CTOD 3</b>	<b>Contingency coefficient</b>	<b>P value</b>
CROSS 0	16 (26.2)	32 (40.0)	13 (40.6)	0.319	0.003
CROSS 1	28 (45.9)	41 (51.2)	15 (46.9)		
CROSS 2	8 (13.1)	7 (8.8)	4 (3.5)		
CROSS 3	9 (14.8)	0 (0.0)	0 (0.0)		
PNP	0.12629	0.007393	0.0068853		0.535
P/D ratio	2.857143	4.620102	7.1198087		< 0.001

CTOD: Computed tomography-based obstructive degree; CROSS: ColoRectal Obstruction Scoring System; PNP: The proportion of nonparenchymal areas at the site of obstruction; P/D ratio: The ratio of proximal to distal obstruction.

**Supplementary Table 2 Multivariate analyses of risk factors on prognosis in obstructive colorectal cancer undergoing resection.**

	<b>OS</b>			<b>PFS</b>		
	<b>HR</b>	<b>95%CI</b>	<b>P value</b>	<b>HR</b>	<b>95%CI</b>	<b>P value</b>
CTOD (severe vs non-severe)	NA	NA	NA	NA	NA	NA
Chemotherapy						

no	NA	NA	0.003	NA	NA	0.065
yes	0.763	0.447-1.301	0.32	0.837	0.508-1.380	0.486
unknown	3.525	1.598-7.776	0.002	2.353	1.045-5.297	0.039
CEA (> 5 ug/L vs ≤ 5 ug/L)	NA	NA	NA	NA	NA	NA
Age (≥ 65y vs < 65y)	NA	NA	NA	NA	NA	NA
Surgery method	NA	NA	NA	NA	NA	NA
pT stage (T4 vs T1-3)	1.999	1.217-3.285	0.006	2.432	1.510-3.917	<0.001
pM stage (M1 vs M0)	2.319	1.362-3.949	0.002	2.005	1.205-3.336	0.007

OCRC: Obstructive colorectal cancer; CTOD non-severe, i.e., CTOD1-2; CTOD severe, i.e., CTOD 3; OS: Overall survival; PFS: Progression-free survival.