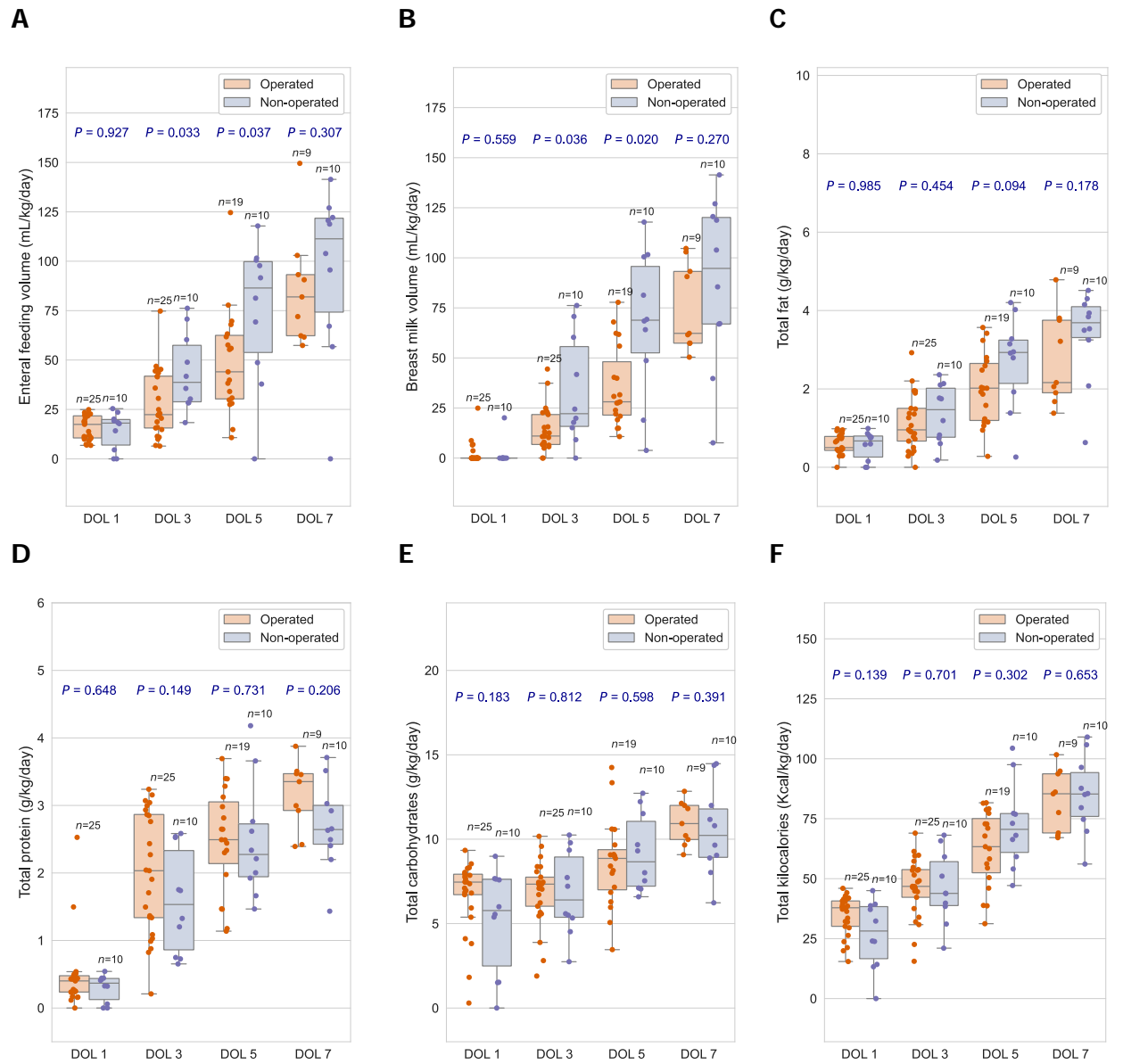


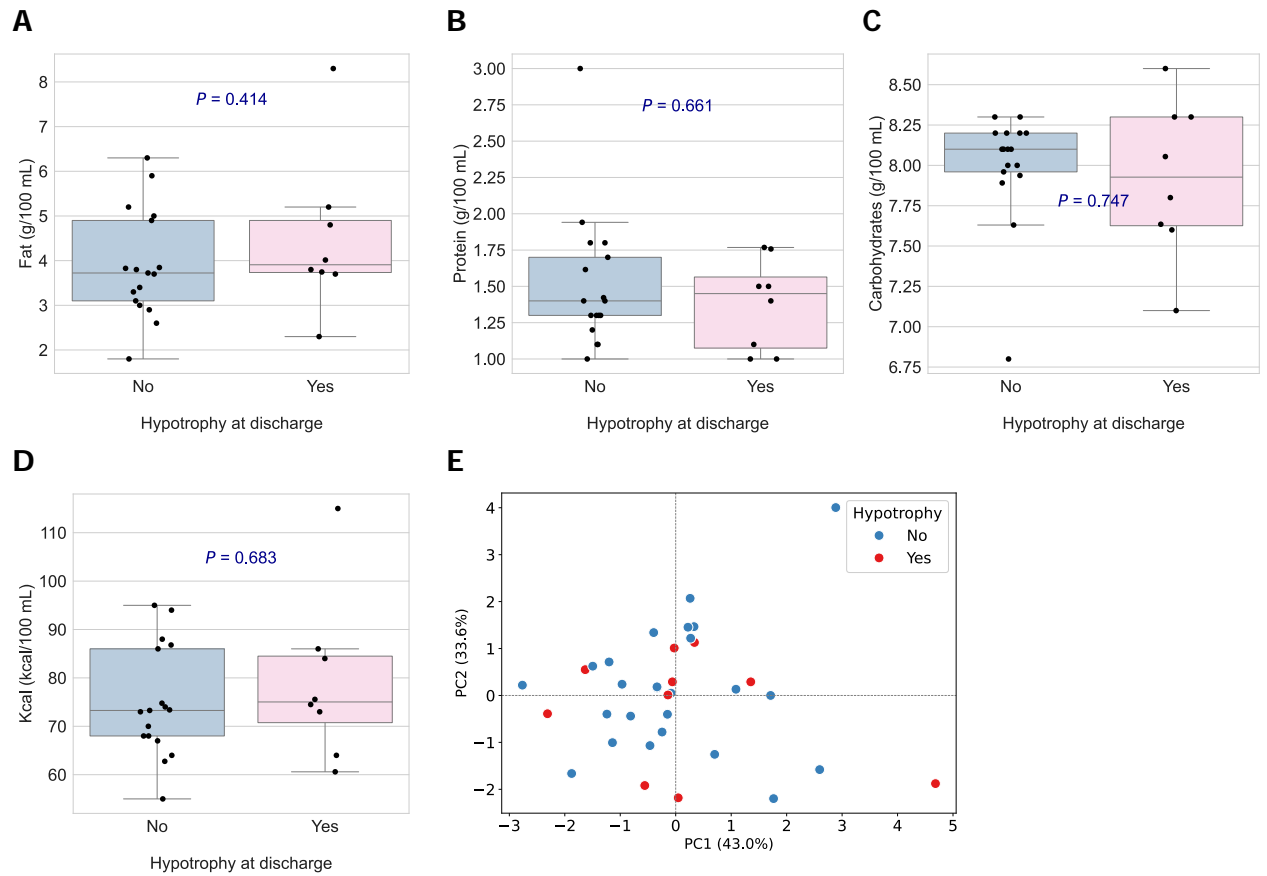
**Supplementary table 1 Breast milk composition in groups**

	<b>Operated</b>	<b>Non-operated</b>	<b>Control</b>	<b>P</b>
<b>Colostrum</b>				
Day after birth	5.0 (4.0–5.0)	5.0 (4.2–5.0)	4.0 (4.0–5.0)	0.199
Fat, g/100 mL	2.4 (2.0–2.6)	2.9 (2.2–3.1)	2.7 (2.3–3.3)	0.045
Total protein, g/100 mL	2.2 (2.0–2.4)	2.2 (2.1–2.3)	2.2 (1.9–2.4)	0.759
True protein, g/100 mL	1.8 (1.6–1.9)	1.7 (1.7–1.8)	1.7 (1.5–2.0)	0.791
Carbohydrates, g/100 mL	7.4 (7.1–7.7)	7.5 (7.0–7.8)	7.6 (7.3–7.7)	0.906
Kcal, kcal/100 mL	62.0 (59.0–66.0)	66.7 (59.8–67.2)	65.0 (59.0–70.0)	0.356
<b>Transitional milk</b>				
Day after birth	12.0 (10.0–12.0)	12.0 (10.2–12.0)	10.0 (10.0–11.2)	0.522
Fat, g/100 mL	3.3 (2.9–3.5)	3.4 (3.2–3.6)	3.8 (3.1–4.7)	0.240
Total protein, g/100 mL	1.8 (1.6–2.0)	1.8 (1.7–2.0)	1.7 (1.6–2.0)	0.852
True protein, g/100 mL	1.5 (1.2–1.5)	1.5 (1.4–1.6)	1.4 (1.3–1.6)	0.895
Carbohydrates, g/100 mL	8.0 (7.7–8.1)	8.0 (7.7–8.2)	8.0 (7.9–8.1)	0.990
Kcal, kcal/100 mL	70.0 (66.0–72.6)	72.0 (70.1–73.4)	75.5 (68.2–84.2)	0.172
<b>Mature milk</b>				
Day after birth	25.0 (20.0–28.0)	21.0 (18.0–21.8)		0.164
Fat, g/100 mL	3.8 (3.3–4.9)	3.9 (3.3–4.1)		0.956
Total protein, g/100 mL	1.4 (1.2–1.7)	1.6 (1.4–1.8)		0.187
True protein, g/100 mL	1.1 (1.0–1.3)	1.3 (1.1–1.4)		0.152
Carbohydrates, g/100 mL	8.1 (7.9–8.2)	8.0 (7.7–8.2)		0.620
Kilocalories, kcal/100mL	73.4 (68.0–86.0)	75.4 (71.0–77.5)		

Data are median (interquartile range).



**Supplementary Figure 1 Enteral nutrition in term neonates with CHD, comparing operated (DOL 6 [IQR: 5-8.5]) and non-operated groups during the early neonatal period. A: Enteral feeding volumes; B: Breast milk feeding volumes; C: Total fat intake; D: Total protein intake; E: Total carbohydrate intake; F: Total kilocalorie intake. DOL: day of life.**



**Supplementary Figure 2 Mature breastmilk composition at V3 in relation to the presence of hypotrophy at discharge (WAZ<-2) in operated neonates.** A: Fat concentrations; B: Protein concentrations; C: Carbohydrate concentrations; D: Kilocalories (kcal); E: Principal component analysis (fat, protein, carbohydrates, and energy). Blue dots: neonates without hypotrophy; red dots: neonates with hypotrophy. P values are presented from Kruskal-Wallis tests.