

Supplementary Table 1. 365-day mortality propensity score parameter list

The variables used in calculating the propensity score are Age, gender, ethnicity, MAP, heart rate, RR, temperature, SpO₂, CHF, atrial fibrillation, COPD, CAD, pulmonary circulation, renal failure, serum creatinine, glucose, serum urea nitrogen, hematocrit, hemoglobin, WBC, platelet, sodium, potassium, INR, PT, SOFA

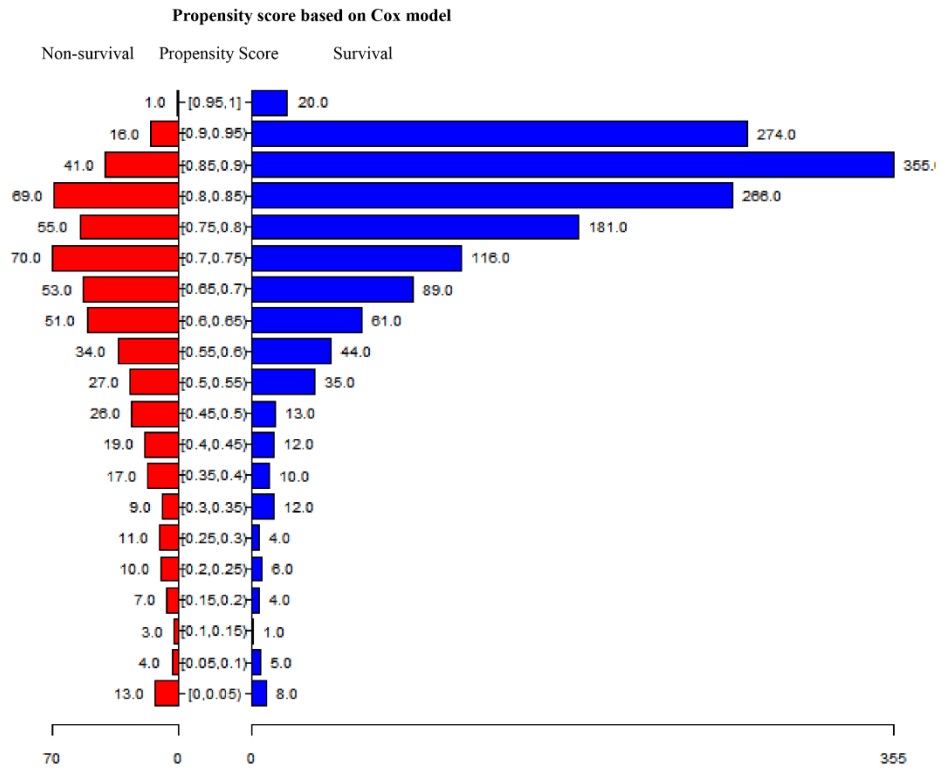
Propensity scoring algorithm	Logistic regression model	
C-statistical	0.740	
Matching method	Greedy matching within specified caliper distances	
Distance metric	0.05	
Matching ratio	1:1	
Use of replacement	With replacement	
Matching sample size	Survival 510 cases	Total: 1020 cases
	Non-survival 510 cases	

Supplementary Table 2. Characteristics of the study population after PSM according to 365-day mortality

Characteristics	Survival (n=510)	Non-survival (n=510)	Standardized diff.	<i>P</i> value
RA, fl*dl/g	4.70 ± 1.29	5.07 ± 1.46	0.265	<0.001
Clinical parameters				
Age, years	70.94 ± 14.36	74.62 ± 12.90	0.269	<0.001
Gender, n (%)			0.012	0.900
Male	284 (55.7)	281 (55.1)		
Female	226 (44.3)	229 (44.9)		
Ethnicity, n (%)				0.005
White	334 (65.5)	353 (69.2)	0.080	
Black	54 (10.6)	26 (5.1)	0.205	
Other	122 (23.9)	131 (25.7)	0.041	
Vital signs				
MAP, mmHg	73.61 ± 8.98	73.49 ± 11.34	0.011	0.859
Heart rate, times/minute	84.79 ± 17.38	85.04 ± 16.62	0.015	0.814
RR, times/minute	20.37 ± 4.15	19.55 ± 3.94	0.202	0.001
Temperature, °C	36.70 ± 0.86	36.72 ± 0.87	0.023	0.717
SpO ₂ , %	96.74 ± 3.54	97.05 ± 2.86	0.095	0.132
Comorbidities, n(%)				
CHF	234 (45.9)	173 (33.9)	0.246	<0.001
Atrial fibrillation	215 (42.2)	221 (43.3)	0.024	0.752
COPD	9 (1.8)	16 (3.1)	0.089	0.224
CAD	249 (48.8)	272 (53.3)	0.090	0.168
Pulmonary circulation	207 (40.6)	198 (38.8)	0.036	0.609
Renal failure	160 (31.4)	133 (26.1)	0.117	0.072
Laboratory parameters				

Albumin, g/dl					
Serum creatinine, mg/dl	1.77 ± 1.31	2.00 ± 1.69	0.153	0.015	
Glucose, mg/dl	122.91 ± 47.70	119.11 ± 45.06	0.082	0.192	
Serum urea nitrogen, mg/dl	35.68 ± 24.03	40.10 ± 27.34	0.172	0.006	
Hematocrit, %	31.61 ± 5.62	30.33 ± 5.51	0.232	<0.001	
Hemoglobin, g/dl	10.54 ± 1.93	10.16 ± 1.88	0.201	0.001	
WBC, 10 ⁹ /l	11.24 ± 5.13	11.75 ± 6.77	0.086	0.172	
Platelet, 10 ⁹ /l	213.83 ± 97.38	210.68 ± 89.57	0.034	0.592	
RDW, fl					
Sodium, mmol/l	135.95 ± 5.03	135.89 ± 5.74	0.011	0.862	
Potassium, mmol/l	3.80 ± 0.59	3.89 ± 0.65	0.143	0.023	
INR	1.61 ± 0.86	1.57 ± 0.87	0.043	0.491	
PT, second	16.96 ± 7.39	16.13 ± 5.46	0.129	0.040	
Scoring systems					
SOFA	6.15 ± 3.12	5.85 ± 3.17	0.096	0.126	

Abbreviations: RA, red blood cell distribution width to albumin; MAP, mean arterial pressure; RR, respiratory rate; SpO₂, pulse oximetry-derived oxygen saturation; CHF, congestive heart failure; COPD, chronic obstructive pulmonary disease; CAD, coronary atherosclerotic heart disease; WBC, white blood cell; RDW, red blood cell distribution width; INR, international normalized ratio; PT, prothrombin time; SOFA, sequential organ failure assessment; LOS, length of stay; CCU, coronary care unit



Supplementary Figure 1