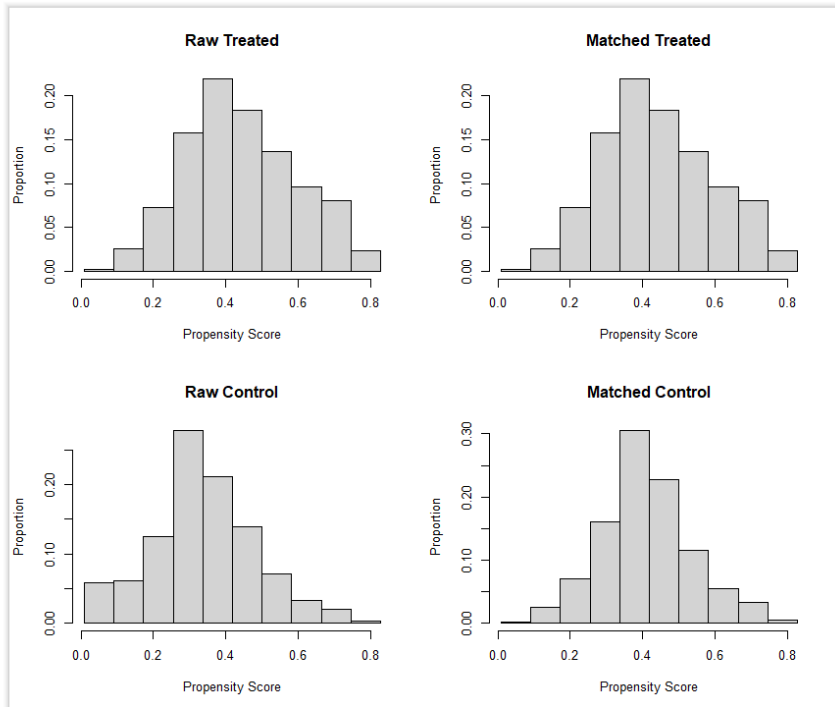


Supplementary material

Supplementary Table 1 Adjustment emergency department intubation characteristics between through propensity score matching

Demographics and Clinical Characteristics	Total	Sex Distribution		p-value
		Male	Female	
Total	774	387	387	-
Age (years)	51.8 (± 17.7)	51.4. (± 17.6)	52.2 (± 17.8)	0.858
Age Groups				
<45 Years	262 [33.9%]	136 [35.1%]	126 [32.6%]	0.447
>= 45 Years	512 [66.1%]	251 [64.9%]	261 [67.4%]	
Shifts				
Night	349 [45.1%]	168 [43.4%]	181 [46.8%]	0.348
Morning to Evening	425 [54.9%]	219 [56.6%]	206 [53.2%]	
Pre intubation Vitals				
Median [interquartile range]				
Systolic Blood pressure	125.5 (150 - 107)	124 (151 -106)	126 (150 - 107)	0.311
Diastolic Blood pressure	76 (90 -61)	77 (90 -61)	75 (89 -61)	0.133
Heart Rate	108 (123 -88)	110 (122 -88)	105 (125 - 88)	0.260
Oxygen Saturations	94 (98 -80)	93 (98 -80)	95 (98 -81)	0.614
Respiratory Rate	26 (32 -20)	26 (32 -21)	25 (32 -20)	0.692
Reasons for intubation				
Coma	22 [2.8%]	10 [2.6%]	12 [3.1%]	0.665
Hypoxia	97 [12.5%]	50 [12.9%]	47 [12.1%]	0.745
Metabolic Acidosis	108 [14%]	56 [14.5%]	52 [13.4%]	0.678
Anticipated Decline	111 [14.3%]	56 [14.5%]	55 [14.2%]	0.918
Respiratory Distress	331 [42.8%]	160 [41.3%]	171 [44.2%]	0.424

Polytrauma	10 [1.3%]	6 [1.6%]	4 [1%]	0.524
Isolated trauma	14 [1.8%]	9 [2.3%]	5 [1.3%]	0.281
Gunshot Injury	8 [1%]	5 [1.3%]	3 [0.8%]	0.477
Others	19 [2.5%]	8 [2.1%]	11 [2.8%]	0.486
Shock Index				
<0.9	399 [51.6%]	203 [52.5%]	196 [50.6%]	0.615
>=0.9	375 [48.4%]	184 [47.5%]	191 [49.4%]	
Ph Group				
>7.3	460 [59.4%]	226 [58.4%]	234 [60.5%]	0.558
<=7.3	460 [59.4%]	226 [58.4%]	234 [60.5%]	
Predictors of Difficulty				
(Heaven criteria)				
Hypoxemia	319 [41.2%]	161 [41.6%]	158 [40.8%]	0.827
Extremes of Size	17 [2.2%]	9 [2.3%]	8 [2.1%]	0.806
Anatomic abnormalities	2 [0.3%]	0 [0%]	2 [0.5%]	0.157
Vomit/Blood/Fluid	207 [26.7%]	88 [22.7%]	119 [30.7%]	0.012*
Exsanguination	27 [3.5%]	13 [3.4%]	14 [3.6%]	0.845
Neck Mobility issues	12 [1.6%]	5 [1.3%]	7 [1.8%]	0.561



Supplementary Figure 1 Histograms.