

Supplementary Data

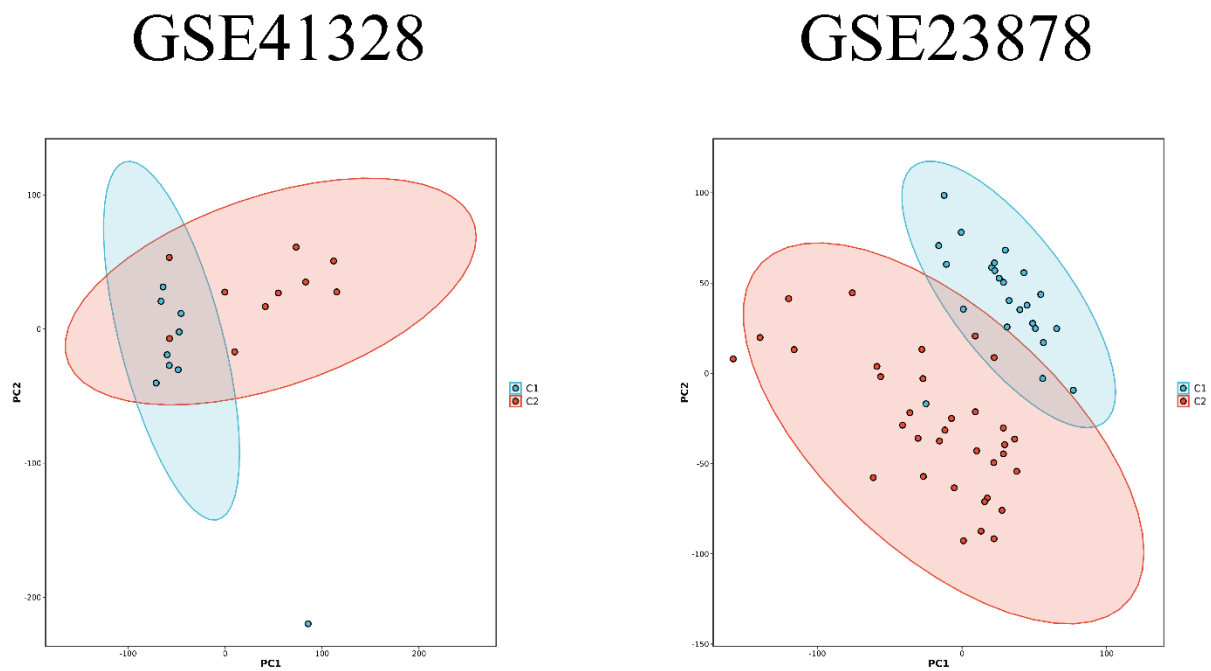


Figure S1: PCA plot of two datasets.

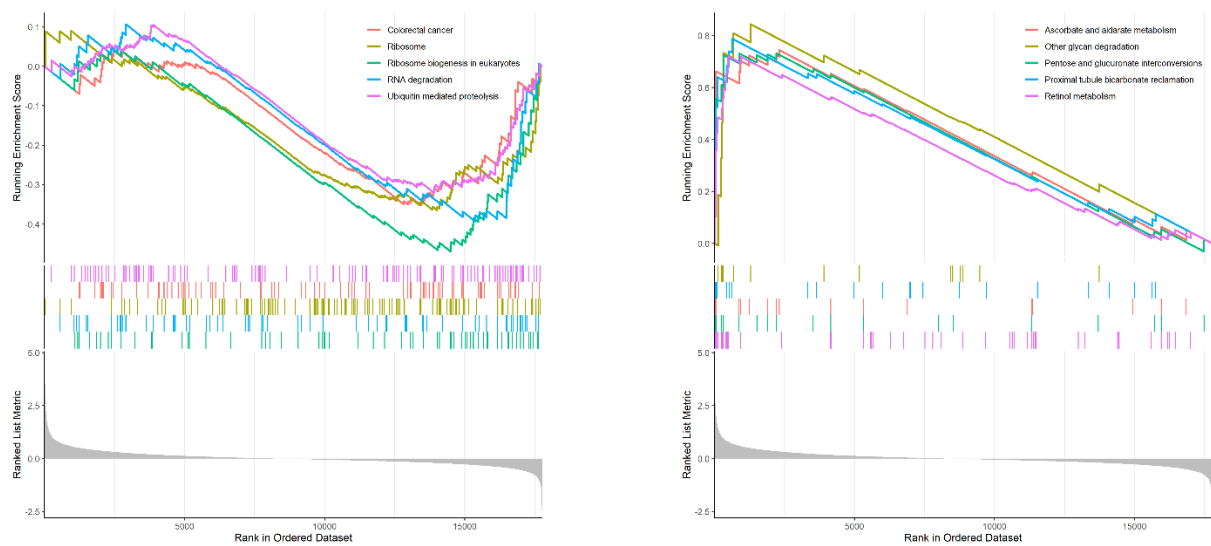
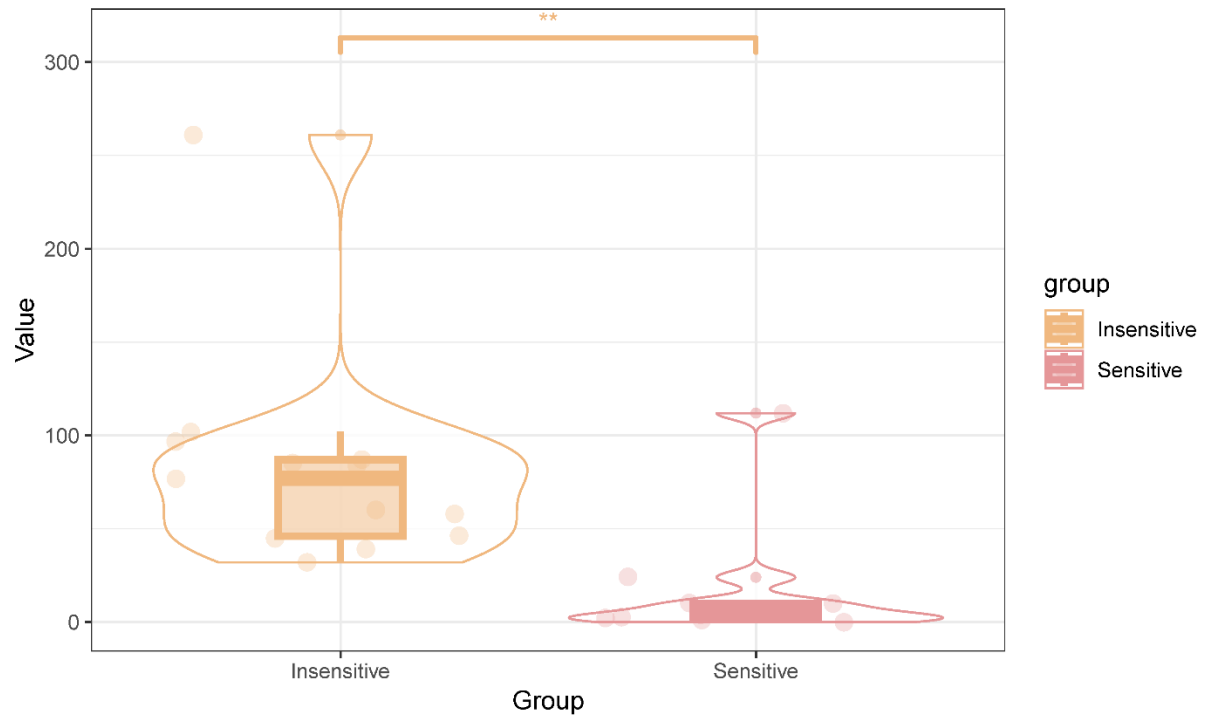
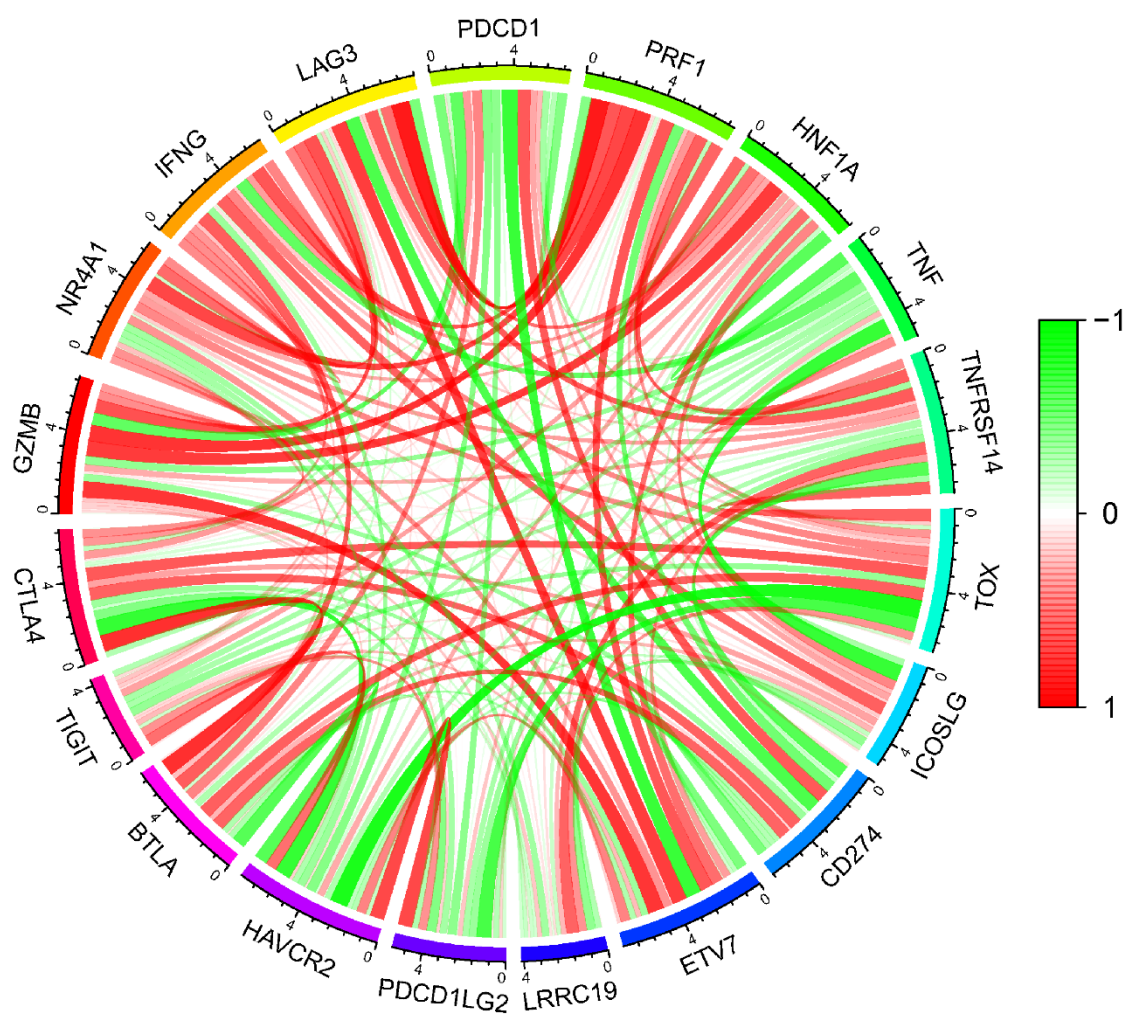


Figure S2: GSEA enrichment analysis of LRR19.



**Figure S3:** LRRC19 Overexpression in Chemoresistant Colorectal Cancer



**Figure S4:** Correlation analysis of LRR19 with CD8 T cell exhaustion markers in colorectal cancer.

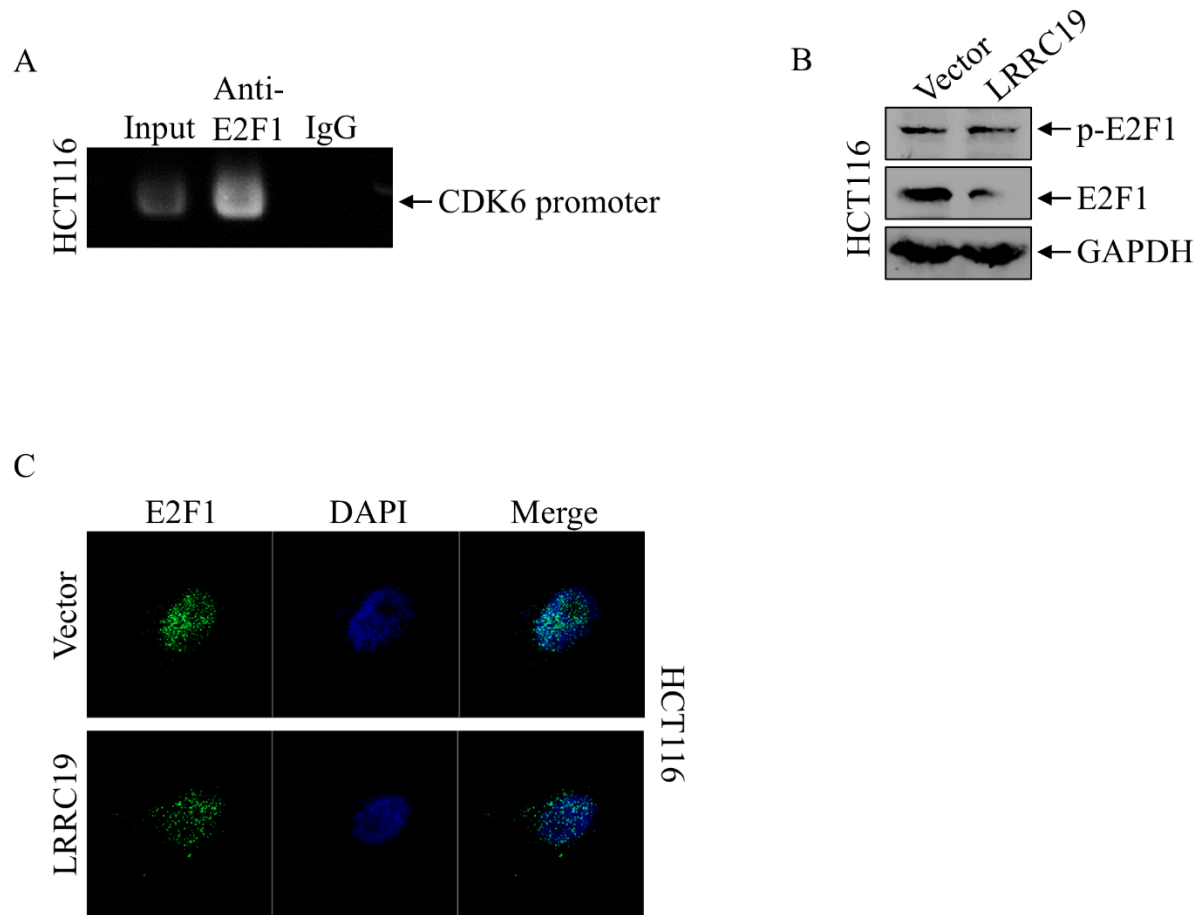


Figure S5: LRRC19 overexpression effects on E2F1. (A) ChIP assay showing reduced E2F1 binding to CDK6 promoter. (B) Western blot indicating decreased total E2F1 levels. (C) Immunofluorescence imaging demonstrating diminished nuclear E2F1 localization.