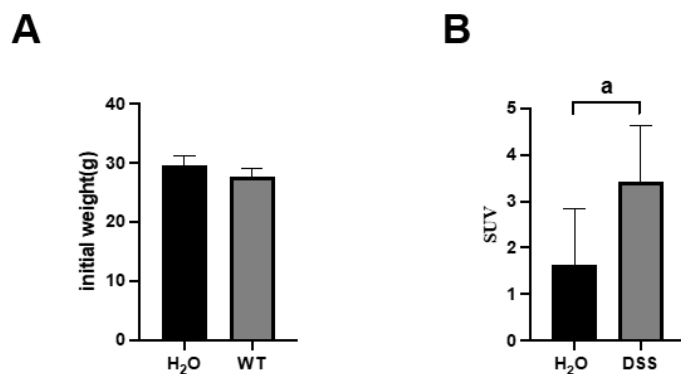


Supplementary Figure 1 Translocator protein is upregulated in the colon tissues of patients with active inflammatory bowel diseases and influences the function of neutrophil. A: The numbers of translocator protein⁺ cells in each high-power field view are shown in the bar chart (^b*P* < 0.01); B: Histograms of fluorescence intensity of neutrophil extracellular traps detected by fluorometric plate reader (^a*P* < 0.05). *n*: the biologically independent replicates used in the statistical analyses. A-CD: Active Crohn's disease; A-UC: Active ulcerative colitis; TSPO: Translocator protein; HC: Healthy controls; PMA: Phorbol 12-myristate 13-acetate.



Supplementary Figure 2 Translocator protein is upregulated in the brains of mice with colitis. A: Comparison of the initial weight of the two groups of mice; B: Statistical analysis and comparison of the brain standardized uptake value in the wild-type mice with H₂O and those with dextran sodium sulfate treatment (^a*P* < 0.05). *n*: The biologically independent replicates used in the statistical analyses DSS: Dextran sodium sulfate; SUV: Standardized uptake value; WT: Wild-type.

Supplementary Table 1 Clinical characteristics of inflammatory bowel diseases patients and healthy donors, *n* (%)

Variable	Healthy controls	Active CD	CD in remission	Active UC	UC in remission
Number of patients	35	47	18	40	25
Age (years)	37.0 (31.0–49.0)	47.0 (32.0–58.0)	45.5 (29.0–55.3)	41.0 (31.0–54.5)	51.0 (27–60.5)
Sex: Female	15 (42.86)	22 (46.81)	7 (38.89)	17 (42.50)	14 (56.0)
Disease duration (months)		20.0 (9.0–38.0)	34.5 (18.5–43.0)	29.5 (12.3–41.0)	44.0 (19.5–53.0)
Disease locations for CD ¹					
L1 (ileal)		14	8		
L2 (colonic)		10	4		
L3 (ileocolonic)		21	6		
L4 (upper gastrointestinal tract)		2	0		
Disease locations for UC ¹					
E1 (proctitis)				18	12
E2 (left-sided colitis)				16	9
E3 (pancolitis)				6	4
Current therapy					
5-aminosalicyclates		6	2	36	22
Immunosuppressants		8	4	25	7
Biologics		35	15	0	0
Nutritional therapy		3	0	0	0

¹According to the Montreal classification.

CD: Crohn's disease; UC: Ulcerative colitis.