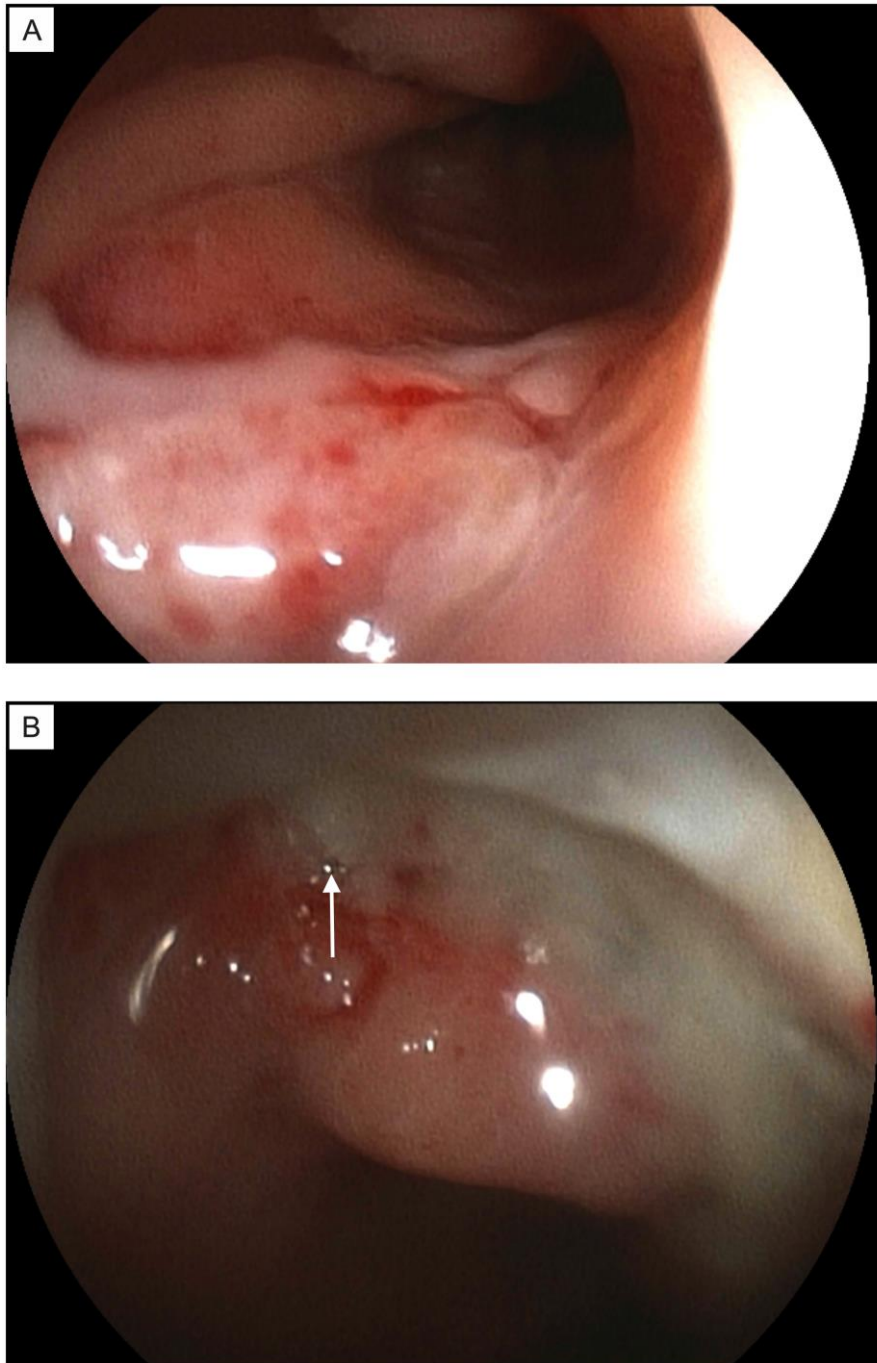


Supplementary Material



Supplementary Figure 1 Endoscopic findings of the patient with gastric fistula detected at 8 days after surgery. A: Esophagogastric anastomosis: antegrade view demonstrating a complete esophagogastric anastomosis without gross leak or ischemic changes; B: Gastric stump: retrograde view revealing a gastric fistula (white arrow) with purulent surface 22 cm from the incisors.

Supplementary Table 1. Postoperative complications within 90 days after operation

Postoperative complications		<i>n</i> = 57	
Anastomotic leakage		3 (5.3)	
Esophagogastric anastomosis [†]		2 (3.5)	
Gastric stump [‡]		1 (1.8)	
Anastomotic stricture		1 (1.8)	
Arrhythmia		11 (19.3)	
Laryngeal nerve injury		10 (17.5)	
Pneumonia		8 (14.0)	
Lymphorrhea		6 (10.5)	
Heart failure		6 (10.5)	
Respiratory failure		4 (7.0)	
ARDS		3 (5.3)	
Aerothorax		3 (5.3)	
Pyothorax		1 (1.8)	
Atelectasis		1 (1.8)	
Chylothorax		1 (1.8)	
Clavien-Dindo complications categories			
Minor complications [§]	I	10 (17.5)	18 (31.6)
	II	8 (14.0)	
Major complications [¶]	IIIa	5 (8.8)	10 (17.5)
	IIIb	1 (1.8)	
	IVa	4 (7.0)	
	IVb	0	
	V	0	

Data presented as *n* (%). ARDS: Acute respiratory distress syndrome. [†]Full thickness gastrointestinal defects were detected at the esophagogastric

anastomosis. †Total parietal defect was detected at the staple line of gastric stump. §Grade I and II complications were treated as minor complications. ¶Grade III to IV complications were treated as major complications.

Supplementary Table 2. Classification of postoperative complications[†]

Postoperative complications	Complication Grades, <i>n</i> (%)						
	I	II	IIIa	IIIb	IVa	IVb	V
Anastomotic leakage	1 (1.8)	0	2 (3.5)	0	0	0	0
Anastomotic stricture	0	0	1 (1.8)	0	0	0	0
Arrhythmia	0	11 (19.3)	0	0	0	0	0
Laryngeal nerve injury	10 (17.5)	0	0	0	0	0	0
Pneumonia	0	2 (3.5)	2 (3.5)	0	4 (7.0)	0	0
Lymphorrhoea	6 (10.5)	0	0	0	0	0	0
Heart failure	0	6 (10.5)	0	0	0	0	0
Respiratory failure	0	0	0	0	4 (7.0)	0	0
ARDS	0	0	0	0	3 (5.3)	0	0
Aerothorax	0	0	3 (5.3)	0	0	0	0
Pyothorax	0	0	1 (1.8)	0	0	0	0
Atelectasis	1 (1.8)	0	0	0	0	0	0
Chylothorax	0	0	0	1 (1.8)	0	0	0

Data presented as *n* (%). ARDS: Acute respiratory distress syndrome. [†]Data were collected according to the types of surgical complications. Some patients developed series of different complications in the meantime.