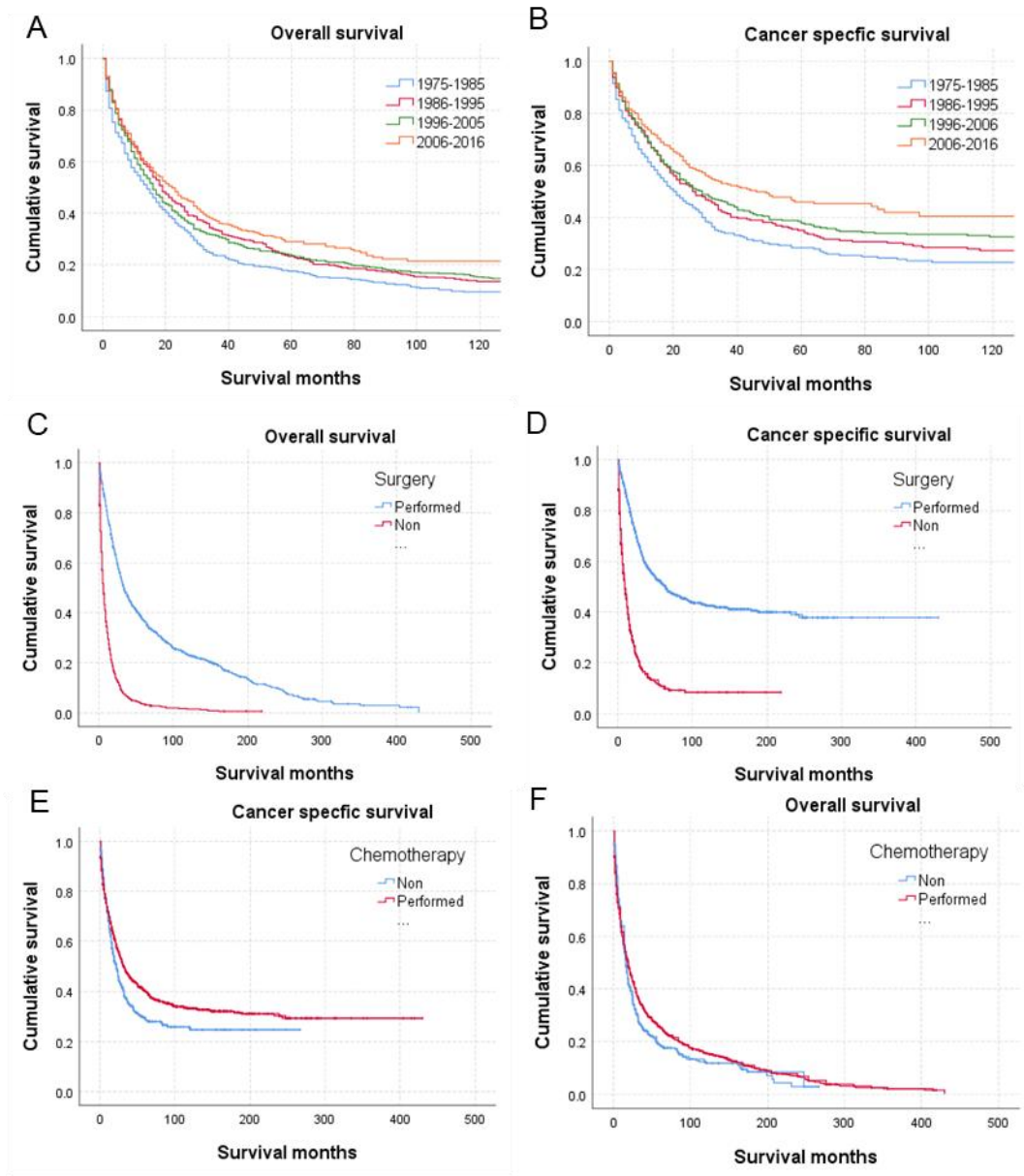
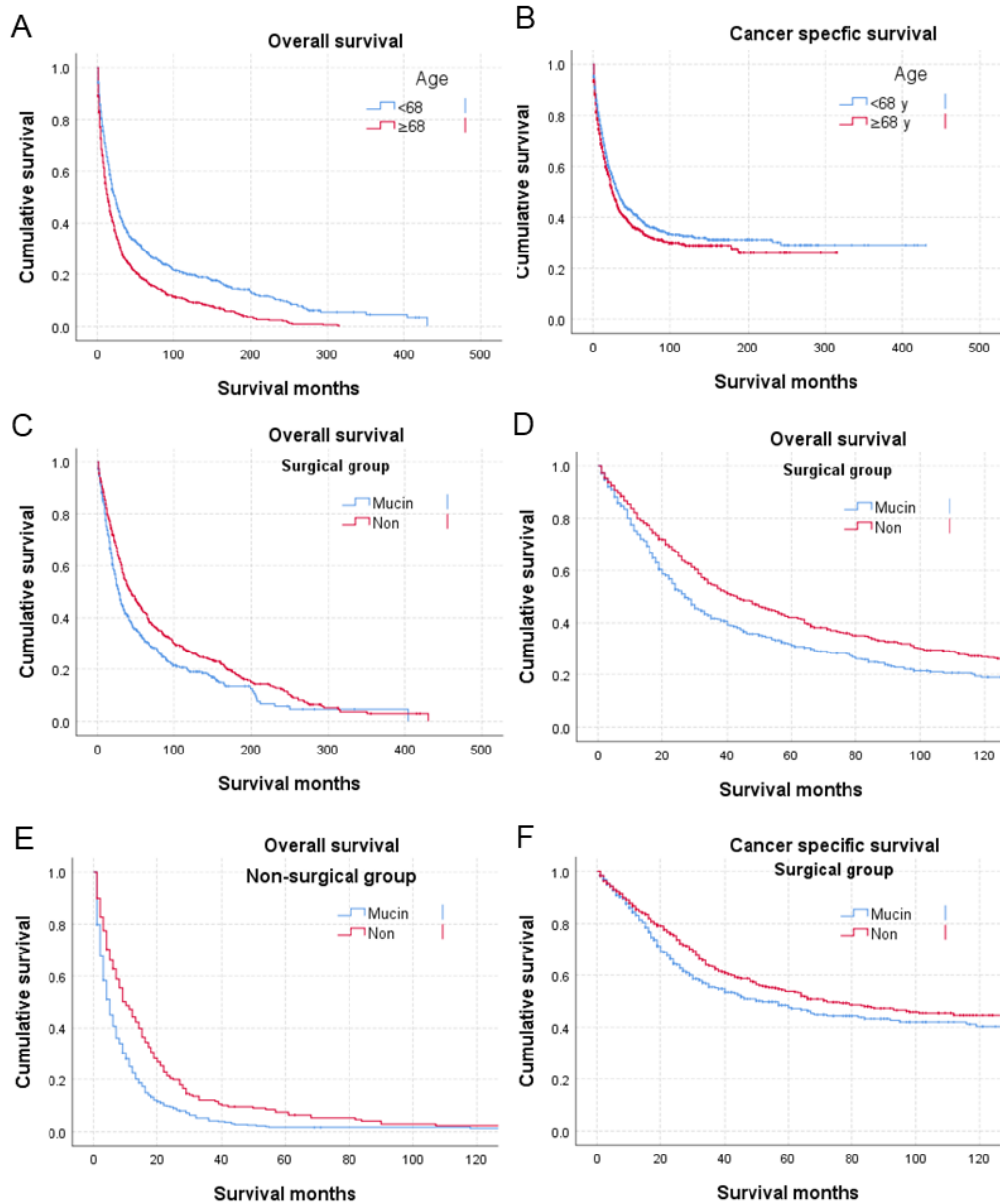


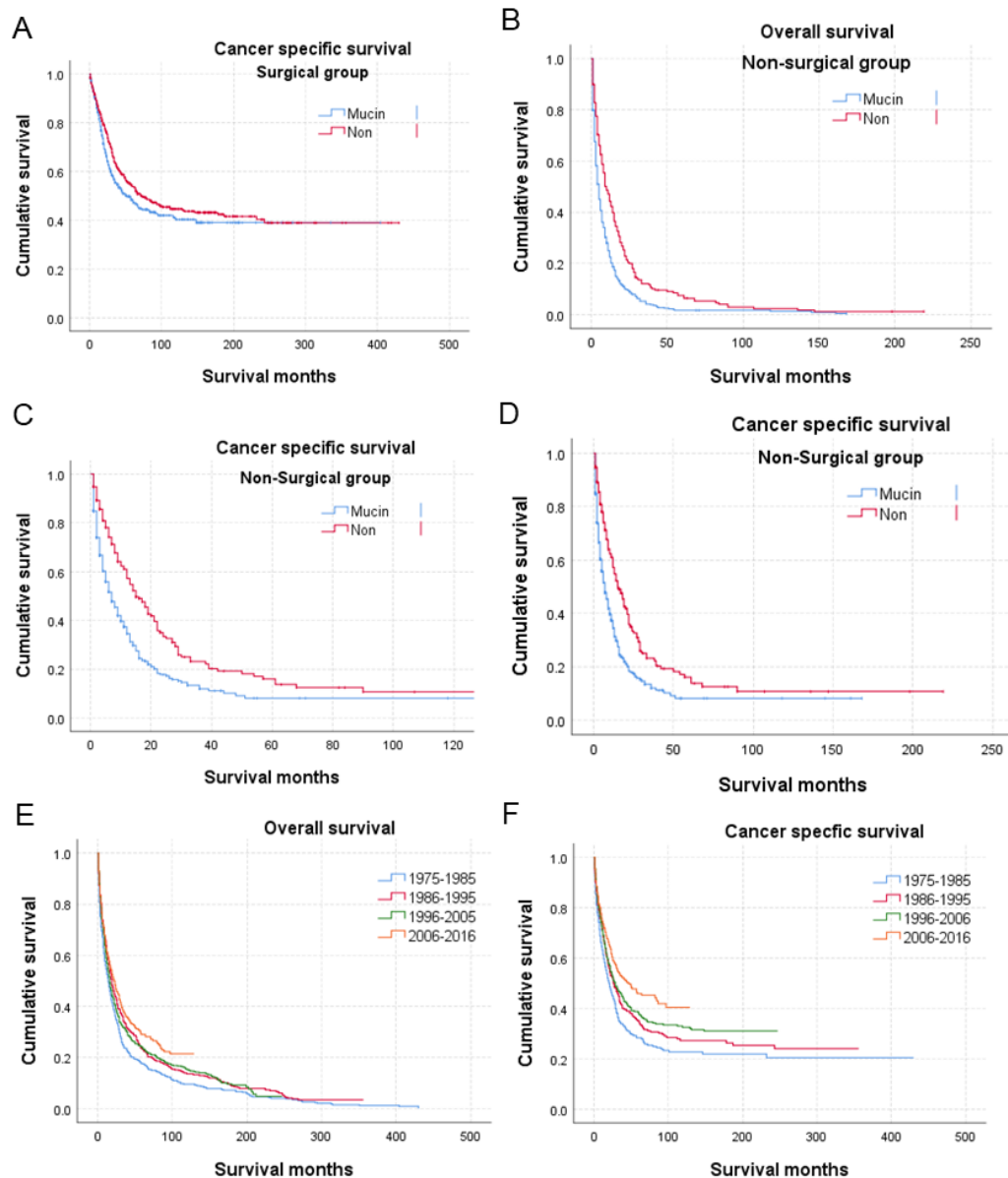
Supplementary Figure 1 Invasive intraductal papillary neoplasm of the bile duct incidence and incidence-based mortality trend 1975-2016. A: Invasive intraductal papillary neoplasm of the bile duct (IPNB) incidence; B: IPNB incidence-based mortality.



Supplementary Figure 2 Invasive intraductal papillary neoplasm of the bile duct incidence and incidence-based mortality trend 1975-2016 for male and female. A: Invasive intraductal papillary neoplasm of the bile duct (IPNB) incidence trend 1975-2016 for male; B: Invasive IPNB incidence trend 1975-2016 in female; C Invasive IPNB incidence-based mortality trends 1975-2016 for male; D Invasive IPNB incidence-based mortality trends 1975-2016 for female.



Supplementary Figure 3 Overall survival and cancer specific survival using Kaplan-Meier’s analysis in invasive intraductal papillary neoplasm of the bile duct during different periods and subtypes of invasive intraductal papillary mucinous neoplasm. A: Overall survival using Kaplan-Meier’s analysis in invasive intraductal papillary neoplasm of the bile duct (IPNB) during different periods; B: Cancer specific survival using Kaplan-Meier’s analysis in invasive IPNB during different periods; C: Overall survival using Kaplan-Meier’s analysis in subtypes of Invasive IPMN; D: Cancer specific survival using Kaplan-Meier’s analysis in subtypes of Invasive IPMN.



Supplementary Figure 4 Overall survival using Kaplan-Meier's analysis in subtypes of invasive intraductal papillary neoplasm of the bile duct in surgical treatment group. A: Overall survival using Kaplan-Meier's analysis in subtypes of invasive intraductal papillary neoplasm of the bile duct (IPNB) in surgical treatment group; B: Overall survival using Kaplan-Meier's analysis in subtypes of Invasive IPNB in surgical treatment group; C: Cancer specific survival using Kaplan-Meier's analysis in subtypes of Invasive IPNB in surgical treatment group; D: Cancer specific survival using Kaplan-Meier's analysis in subtypes of Invasive IPNB in surgical treatment group.