

**Supplementary Table 1 Patients and lesions characteristics**

Author	Patients	Age	Male	Lesions	Head/uncinate lesions	Body lesions	Tail lesions	Lesion size	Range	Adenocarcinomas	NET (tot)	NET (Functional)	Metastases	SPN
Barthet 2019	12	59,9	7	14	3	6	5	13,1	10 - 20	0	14	0	0	0
Song 2016	6	62	1	6	4	2	0	38	30 - 90	6	0	0	0	0
Oleinikov 2019	18	60,4	10	25	15	8	2	14,3	4,5 - 30	0	25	9	0	0
Choi 2018	10	51,4	4	10	4	5	1	19,7	8 - 28	0	8	1	0	2
Scopelliti 2018	10	62	7	10	4	6	0	49,2	35 - 75	10	0	0	0	0
Crinò 2018	8	69,8	5	8	5	3	0	30,6	22 - 67	7	0	0	1	0
Lakhtakia 2016	3	45	3	3	2	1	0	17,7	14 - 22	0	3	3	0	0
Pai 2015	2	69,5	0	2	2	0	0	27,5	15 - 40	0	2	0	0	0
Arcidiacono 2012	22	61,9	11	22	18	4	0	35,7	23 - 54	22	0	0	0	0

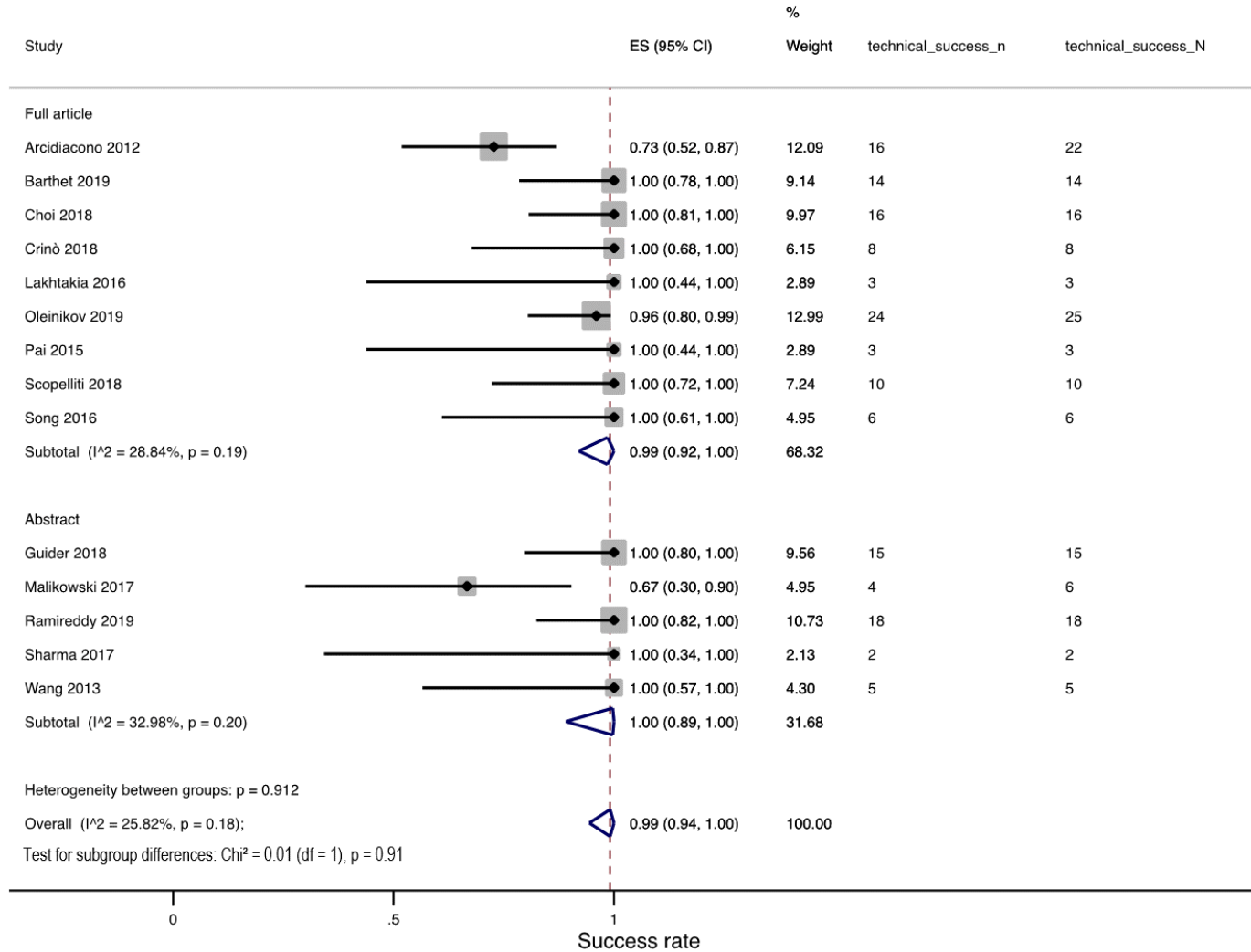
Wang 2013	3	62,7	\	3	\	\	\	37,3	\	3	0	0	0	0
Sharma 2017	2	40,5	1	2	2	0	0	1,8	16 - 19	0	2	2	0	0
Ramireddy 2019	10	\	\	10	\	\	\	\	\	10	0	0	0	0
Malikowski 2017	4	\	\	4	2	1	1	\	\	0	1	0	3	0
Guider 2018	10	\	7	10	5	3	2	27	\	10	0	0	0	0



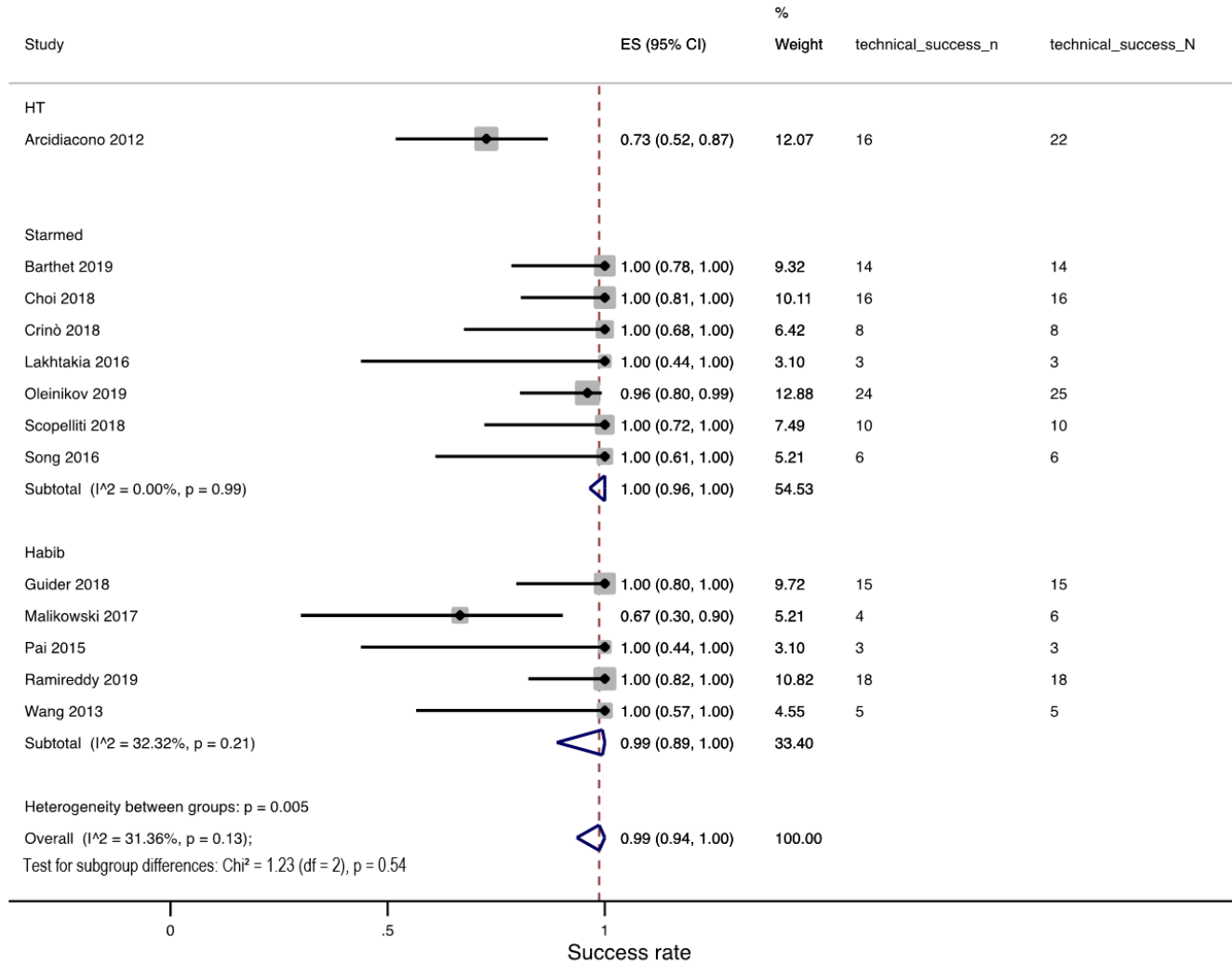
Sharma 2017	0	0	0	0	0	0	0	0	0
Ramired dy 2019	0	0	0	0	0	0	0	0	0
Malikows ki 2017	0	0	0	0	0	0	0	0	0
Guider 2018	1	0	0	0	0	0	1	0	0

PV: portal vein; PD pancreatic duct

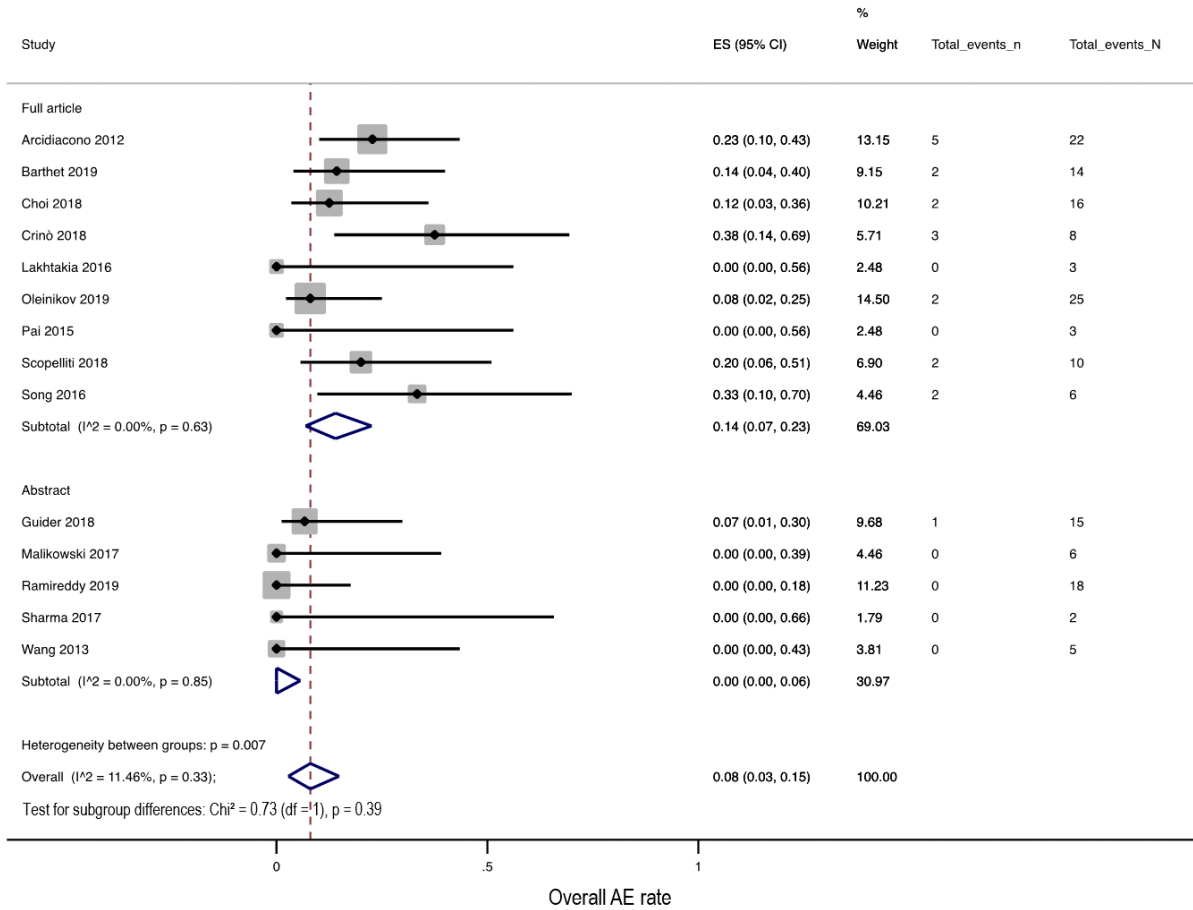
## Supplementary Figure 1 Technical success: subgroup analysis by publication type



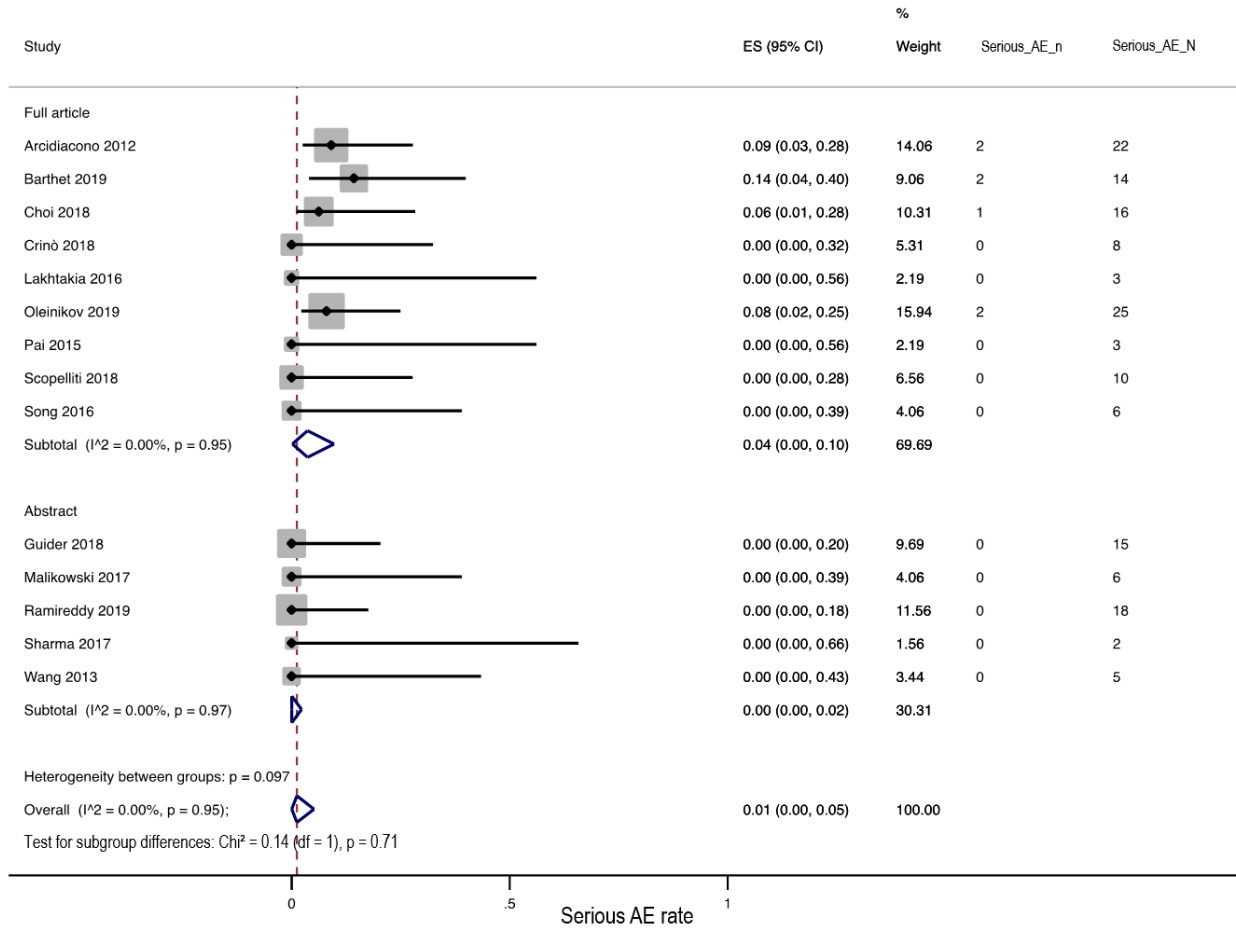
## Supplementary Figure 2 Technical success: subgroup analysis by technology



### Supplementary Figure 3 Overall adverse event: subgroup analysis by publication type

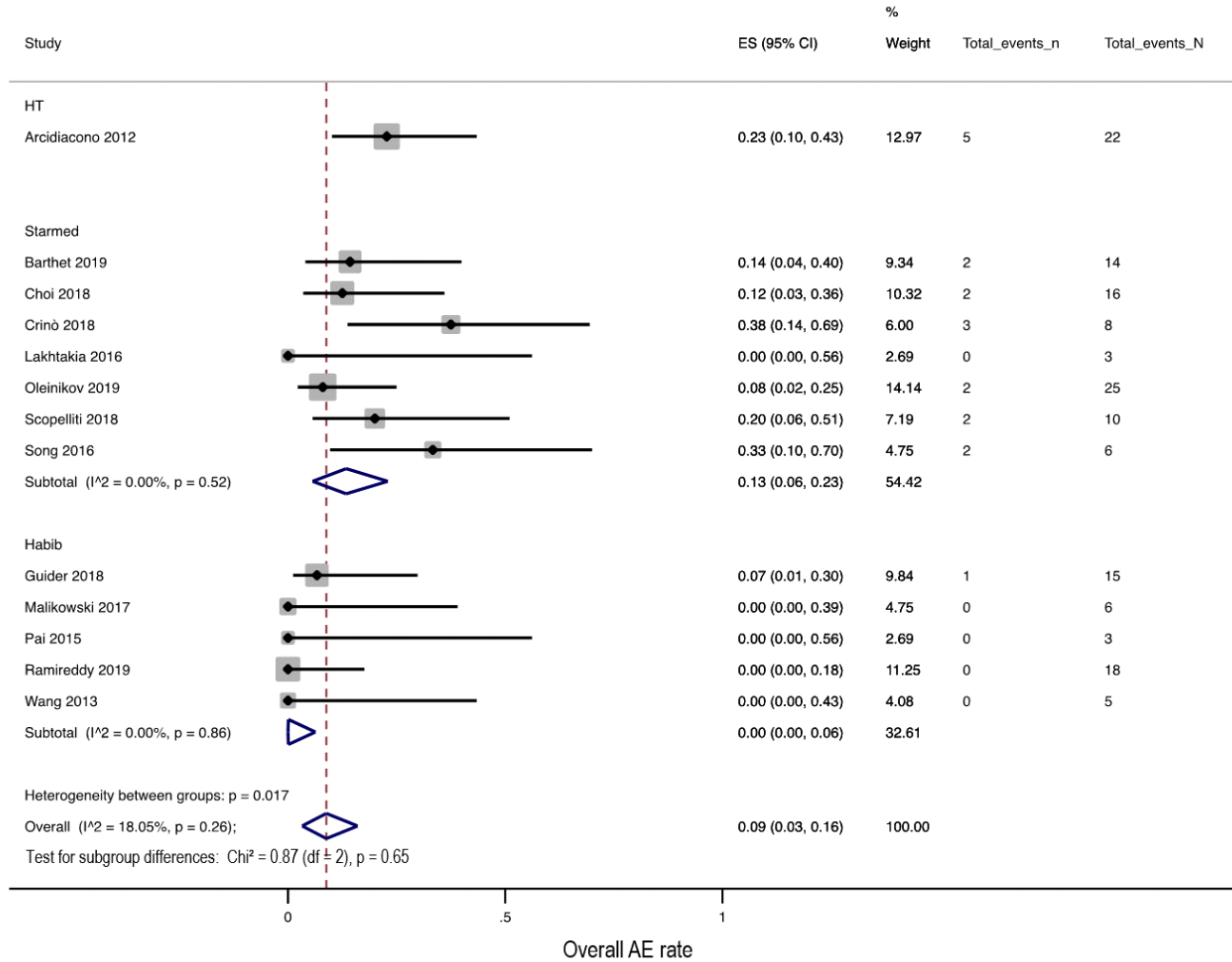


## Supplementary Figure 4 Serious adverse event: subgroup analysis by publication type

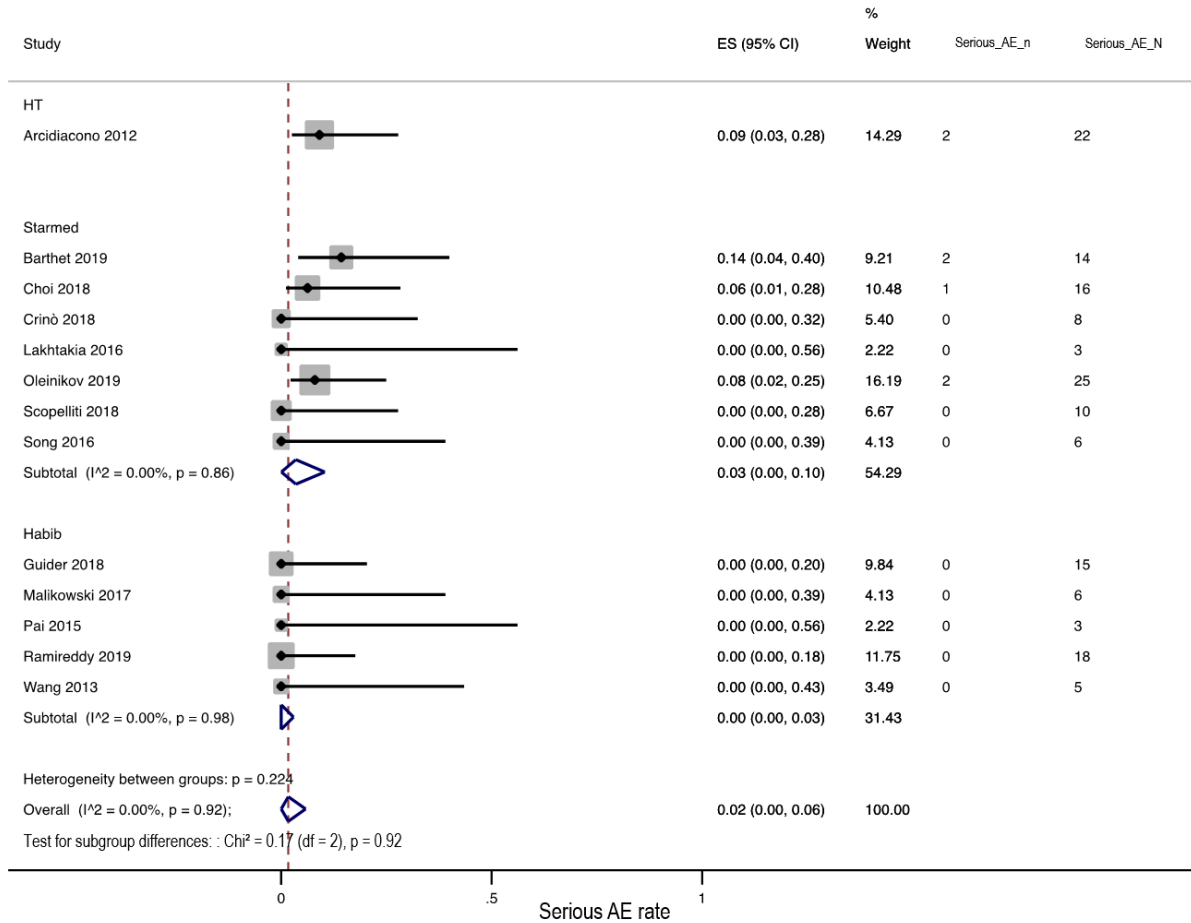




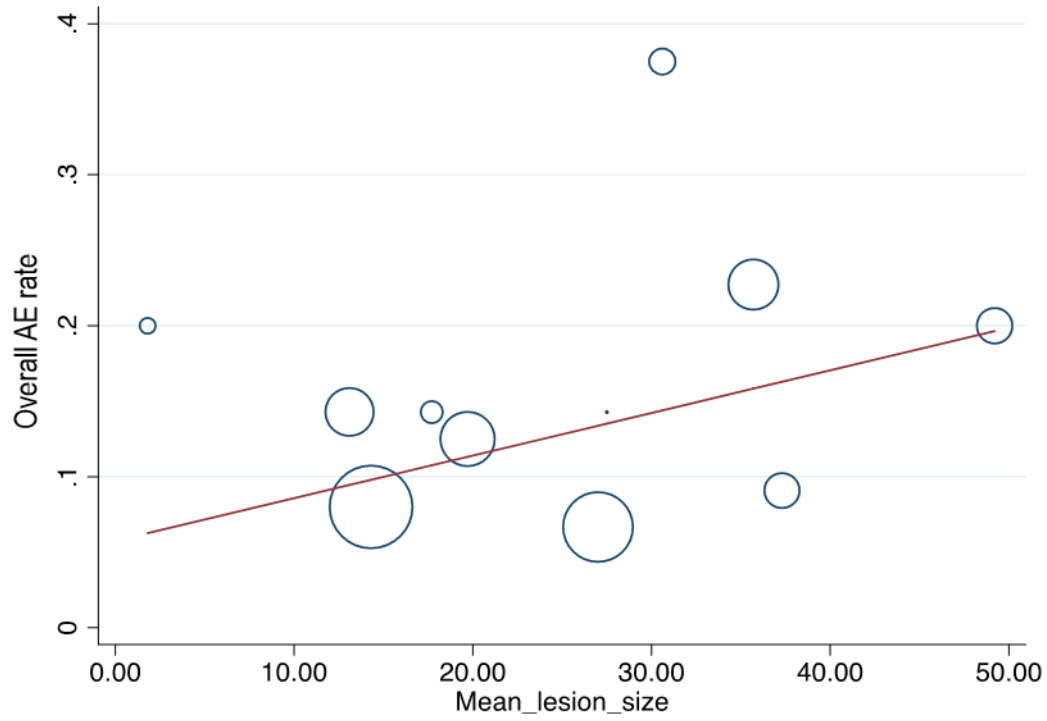
## Supplementary Figure 5 Overall adverse event: subgroup analysis by technology



## Supplementary Figure 6 Serious adverse event: subgroup analysis by technology

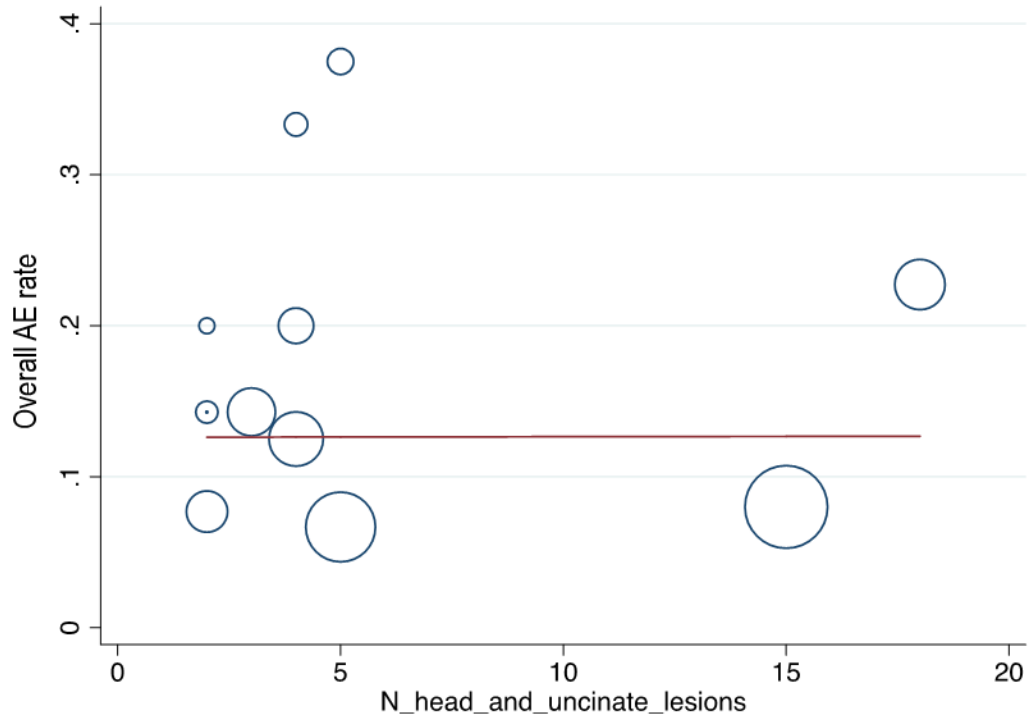


Supplementary Figure 7 Adverse events and lesion size: univariate metaregression



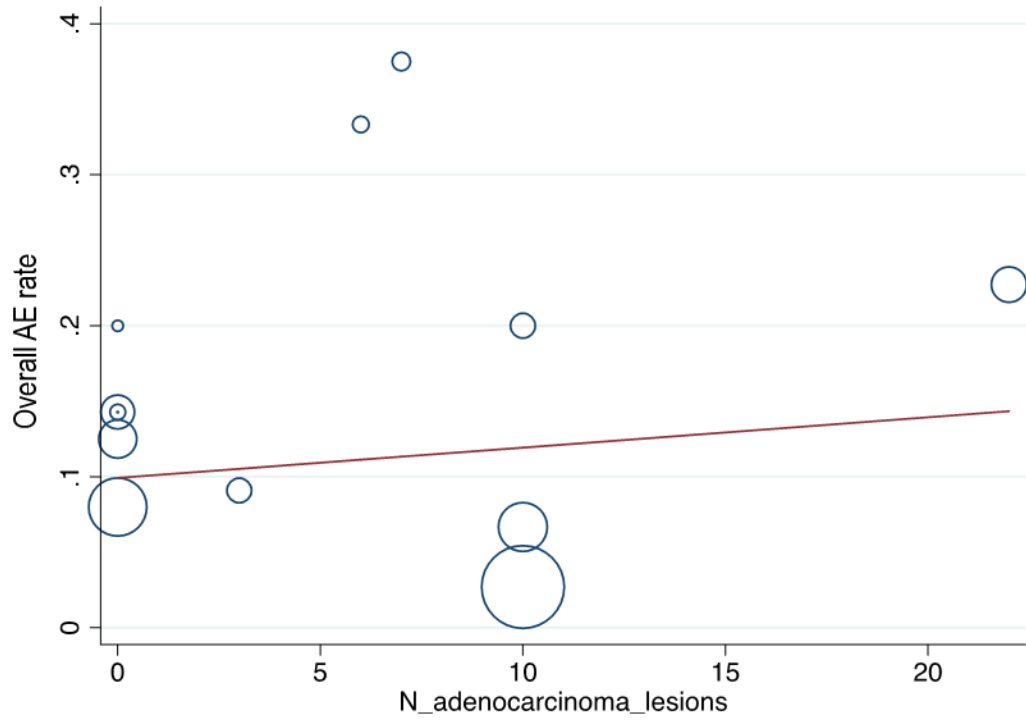
p= 0.34

Supplementary Figure 8 Adverse events and location: univariate metaregression



p= 0.99

Supplementary Figure 9 Adverse events and histology: Univariate metaregression



$p = 0.67$