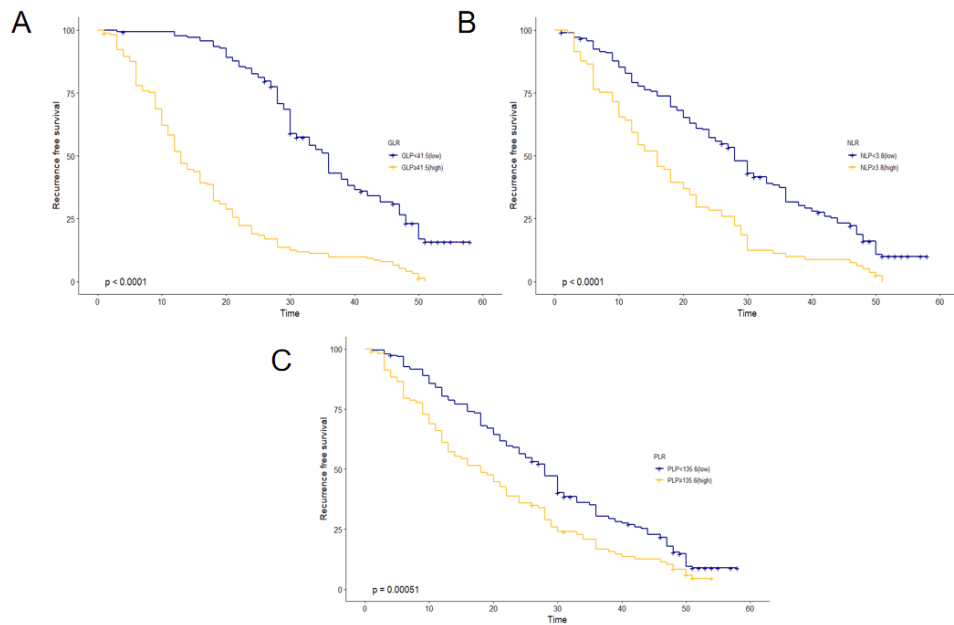


We also analyzed the association between GLR, NLR, PLR, and (RFS). The results showed that patients in the lower GLR cohort had significantly longer RFS compared to those in the higher GLR cohort (Figure S1A). Furthermore, patients in the lower NLR and PLR groups exhibited a statistically significant extension in RFS compared to those in the higher NLR or PLR groups (Figures S1B-C).



Supplementary Figure 1 Kaplan-Meier survival curves for RFS based on GLR(A), NLR(B), and PLR(C) in HCC patients. A:

Kaplan-Meier curve for RFS based on low and high GLR groups; B: Kaplan-Meier curve for RFS based on low and high NLR groups;

C: Kaplan-Meier curve for RFS based on low and high PLR groups. Abbreviations: RFS, Recurrence-Free Survival; GLR,

gamma-glutamyl transferase to lymphocyte ratio; HCC, hepatocellular carcinoma; NLR, neutrophil-to-lymphocyte ratio; PLR,

platelet-to-lymphocyte ratio.