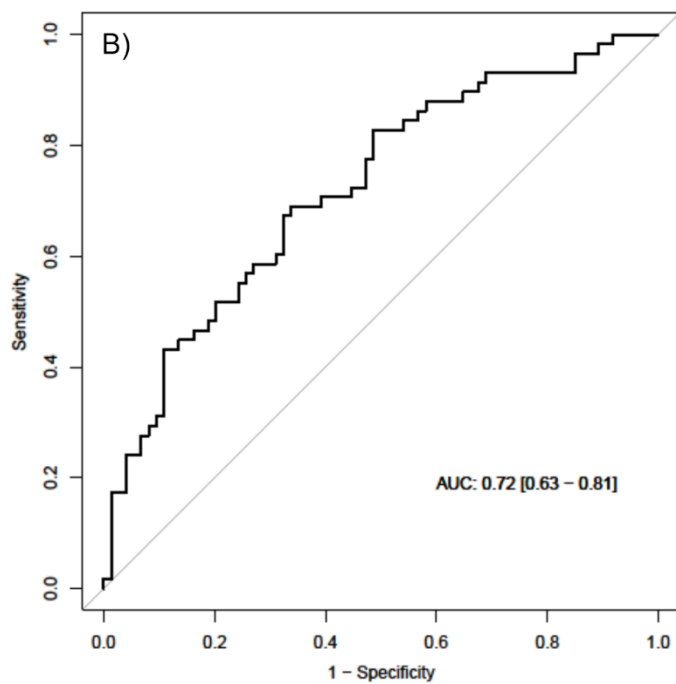
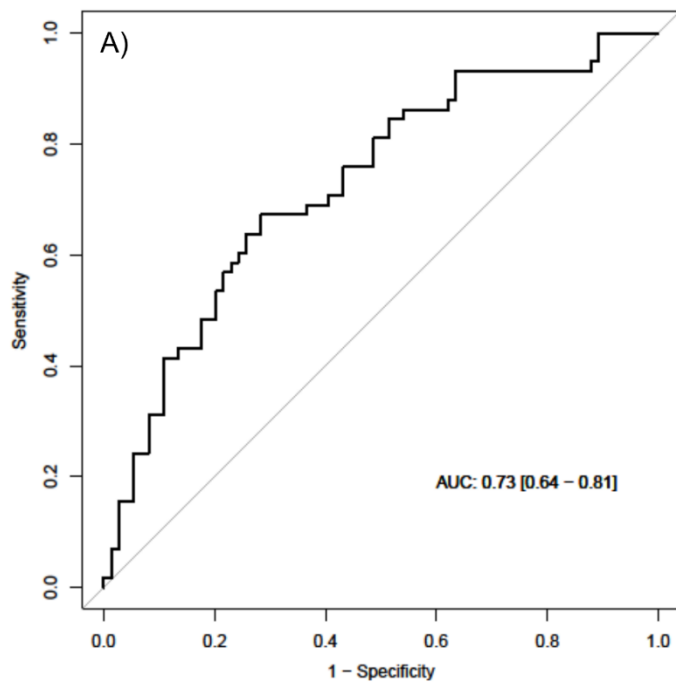


Supplemental Figure 1 Example of semi-automated segmentation of visceral adipose tissue (orange) and subcutaneous adipose tissue (blue) in Vitrea® to calculate volume and radiodensity.



**Supplementary Figure 2 Receiver operative characteristic curve of (A) visceral adipose tissue (VAT) radiodensity and (B) VAT:subcutaneous adipose tissue radiodensity for predicting early endoscopic post-operative recurrence.**

Supplemental Table 1 Univariate association of demographic and disease-related factors with radiographic mesenteric parameters

	VAT volume ( $\beta$ , <i>P</i> -value)	VAT:SAT volume ( $\beta$ , <i>P</i> - value)	VAT radiodensity ( $\beta$ , <i>P</i> -value)	VAT:SAT radiodensity ( $\beta$ , <i>P</i> -value)	Severe vasa recta engorgement (OR, <i>P</i> -value)	Mesenteric Lymphadenopat hy (OR, <i>P</i> - value)
Age	<b>0.49, 2.10e<sup>-9</sup></b>	<b>0.26, 0.002</b>	-0.06, 0.46	0.06, 0.49	0.98, 0.06	1.00, 0.44
Female	-0.15, 0.08	<b>-0.26, 0.003</b>	0.04, 0.66	-0.07, 0.44	0.38, 0.71	1.02, 0.96
European Ancestry	0.04, 0.97	0.05, 0.56	0.08, 0.33	-0.10, 0.25	1.36, 0.59	0.46, 0.14
Disease duration	<b>0.23, 0.008</b>	0.10, 0.26	-0.07, 0.43	0.003, 0.97	1.0, 0.69	1.00, 0.81
BMI	<b>0.68, 7.32e<sup>-18</sup></b>	0.09, 0.32	<b>-0.21, 0.02</b>	0.17, 0.07	0.95, 0.22	0.98, 0.70
Active smoking	0.12, 0.18	-0.03, 0.78	0.02, 0.83	0.03, 0.77	1.74, 0.62	4.12, 0.09
CD location						
L3 vs L1	0.01, 0.92	0.04, 0.68	-0.01, 0.92	-0.01, 0.89	1.55, 0.26	1.95, 0.13
L4	<b>-0.18, 0.04</b>	-0.10, 0.27	-0.04, 0.63	0.08, 0.37	1.11, 0.88	1.28, 0.72
CD behavior						
B1	Reference	Reference	Reference	Reference	Reference	Reference
B2	0.05, 0.73	0.10, 0.46	-0.22, 0.09	0.15, 0.24	0.22, 0.17	1.57, 0.69
B3	-0.06, 0.71	0.03, 0.88	-0.24, 0.13	0.22, 0.16	1.00, 1.00	2.75, 0.38
B2/3	0.10, 0.51	0.15, 0.32	<b>-0.38, 0.01</b>	<b>0.31, 0.04</b>	0.71, 0.76	1.00, 1.00
Perianal disease	-0.12, 0.16	-0.03, 0.70	0.02, 0.84	0, 0.99	1.00, 1.00	1.41, 0.51
Prior surgery	0.13, 0.13	0.09, 0.31	<b>-0.11, 0.20</b>	0.03, 0.71	<b>0.43, 0.04</b>	0.63, 0.36
Pre-op corticosteroids	-0.06, 0.52	<b>-0.20, 0.02</b>	0.03, 0.70	0.03, 0.72	1.37, 0.45	0.81, 0.63

VAT: Visceral adipose tissue; SAT: Subcutaneous adipose tissue; OR: Odds ratio; BMI: Body mass index.