

## Supplementary

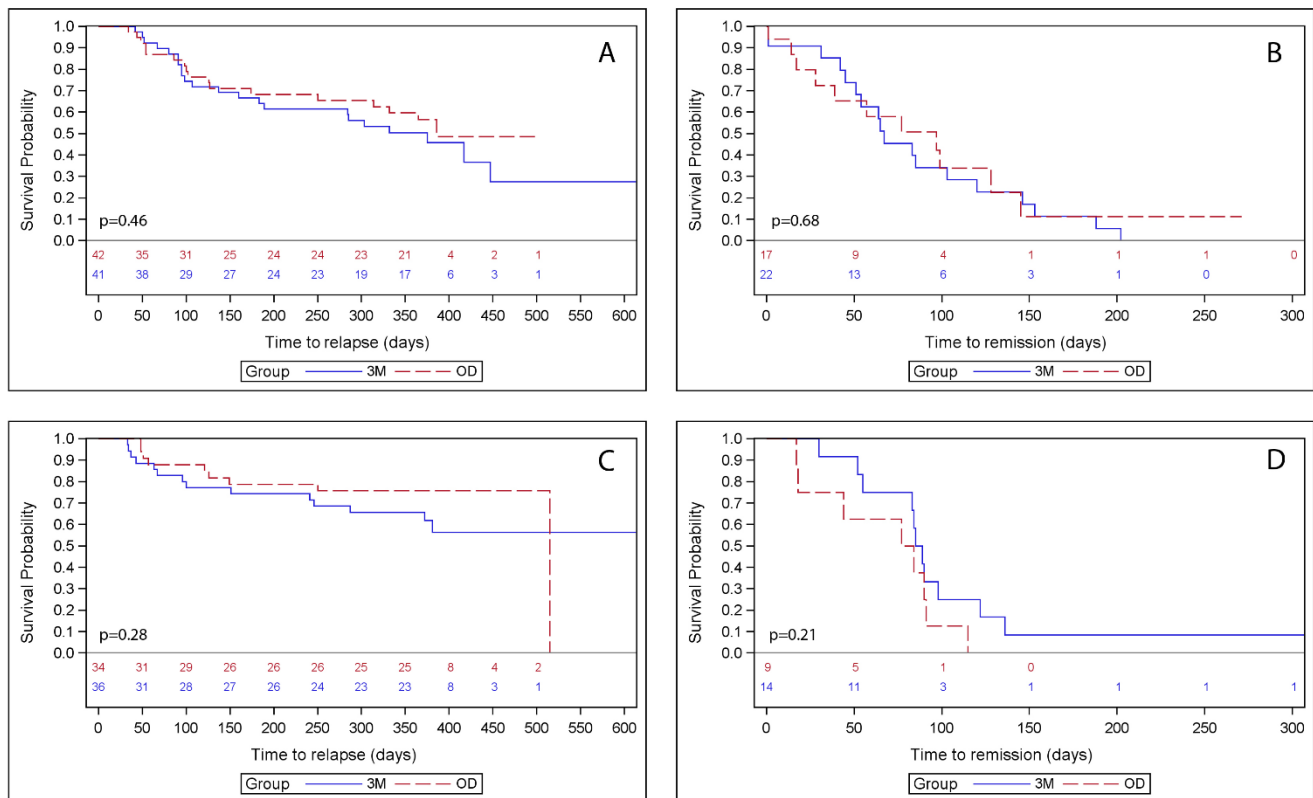


Figure 1. (A) Time to a moderate or severe relapse combined (in days) measured by fecal calprotectin (FC) for all patients at risk ( $n=83$ ) and (B) the corresponding (days) to remission ( $n=39$ ). (C) time in days to a moderate or severe relapse combined measured by SCCAI (simple clinical colitis activity index) for all UC including IBDU patients at risk ( $n=70$ ) and (D) the corresponding time (days) to remission ( $n=23$ ). The two eHealth screening procedures (every third month (3M) and on demand (OD)) are represented by blue and red lines, respectively.

**Table 1.** Number (%) of disease course types (A-F) in patients with inflammatory bowel disease during one year of follow-up in accordance with Total Inflammation Burden Score (TIBS), Fecal Calprotectin (FC), Simple Clinical Colitis Activity Index (SCCAI), and Harvey-Bradshaw Index (HBI). Disease courses were evaluated according to the screening procedures of on demand (OD) and every third month (3M)

	FC		SCCAI		HBI		TIBS		P
	3M	OD	3M	OD	3M	OD	3M	OD	
A <sup>1</sup>	0	0	0	0	0	0	0	0	NS <sup>2</sup>
B <sup>1</sup>	0	1(2.4)	0	1(2.9)	1(16.7)	2(22.2)	0	1(2.6)	
C <sup>1</sup>	2(4.7)	1(2.4)	1(2.7)	0	0	0	5(11.6)	4(10.3)	
D <sup>1</sup>	18(41.9)	19(46.3)	22(59.5)	25(71.2)	4(66.7)	5(55.6)	17(39.5)	17(43.6)	
E <sup>1</sup>	12(27.9)	14(34.1)	4(10.8)	5(14.3)	0	0	9(20.9)	9(23.1)	
F <sup>1</sup>	11(25.6)	6(14.6)	10(27.0)	4(11.4)	1(16.7)	2(22.2)	12(27.9)	8(20.5)	
<i>n</i> =(100%)	43	41	37	35	6	9	43	39	

<sup>1</sup>A: Chronic continuous course; red throughout one year, B: Chronic continuous course; yellow, C: Chronic continuous course; red and yellow, D: Continuous remission course; green, E: Intermittent course; green, yellow, red, F: Intermittent course; green with a single relapse (yellow or red).

<sup>2</sup>FC  $P=0.61$ , SCCAI  $P=0.28$ , HBI  $P=1.0$ , TIBS  $P=0.89$ .

**Table 2.** Number (%) of patients with inflammatory bowel disease on different medications at baseline and at one-year follow-up.

	Baseline		One-year follow-up	
	3M <sup>1</sup> OD <sup>1</sup>		3M <sup>1</sup>	OD <sup>1</sup>
None	6(14.0)	6(13.3)	5(11.6)	3(6.7)
5ASA	21(48.8)	26(57.8)	21(48.8)	26(57.8)
Corticosteroids	4(9.3)	4(8.9)	2(4.7)	4(8.9)
Immunomodulators	7(16.3)	3(6.7)	8(18.6)	4(8.9)
Biological	5(11.6)	6(13.3)	7(16.3)	8(17.8)
Total	43(100)	45(100)	43(100)	45(100)

<sup>1</sup>3M= screening every third month, OD= screening on demand