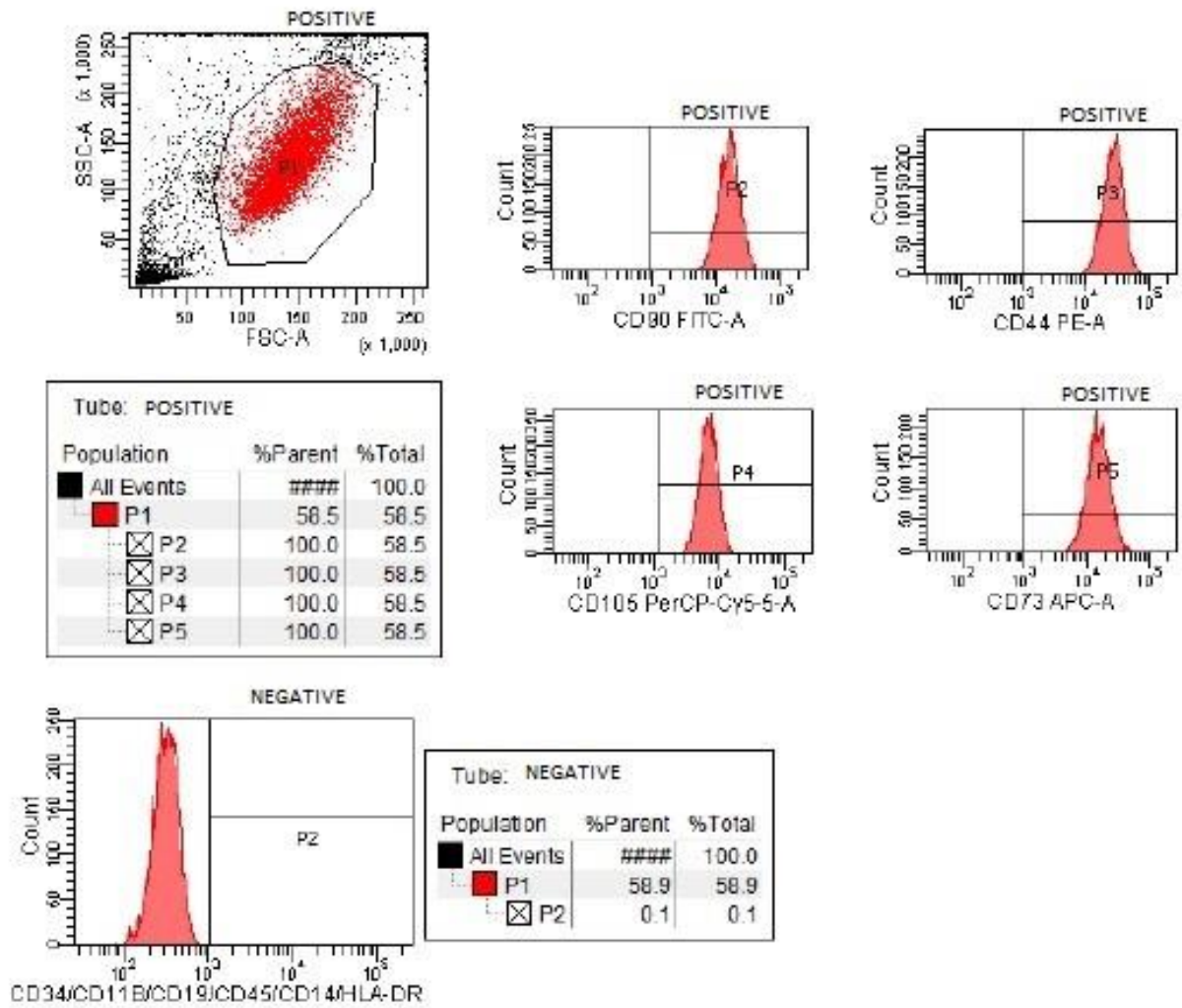


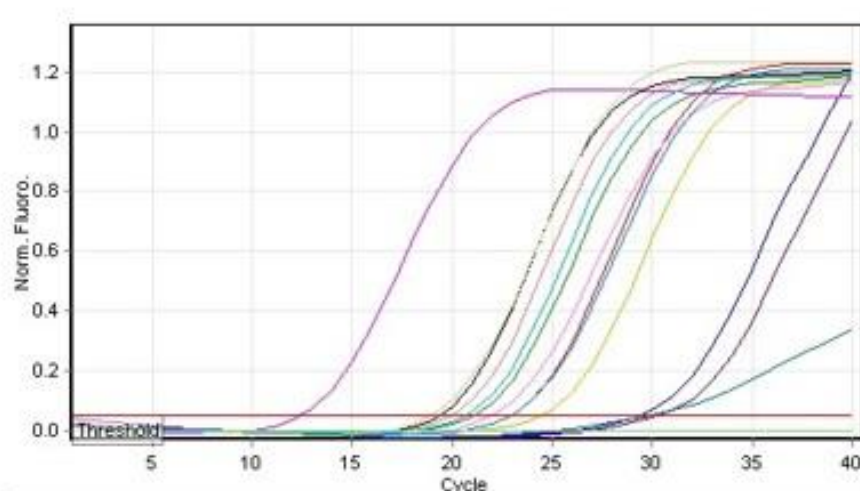
**Supplementary Table 1 WJ-MSC QC parameters**

<u>IMMUNOPHENOTYPING</u>	CD90,CD44, CD105,CD73→≥%95  CD45, CD34, CD19, CD11B, HLA-DR CD14 ≤%2 (Figure 1)
<u>GENE EXPRESSION</u>	SOX2, POU5F1, TERT, ZFP42, NES, BMP2, RUNX2, PPARG, JAG1, ICAM1, VCAM1, VIM It is concluded that there is STRONG POSITIVITY in genes with Ct values lower than 29, POSITIVE in genes with values between 30-37, and POORLY EXPRESSION in samples with Ct values between 38-40 or there may be environmental contamination.
<u>MYCOPLASMA</u>	<u>NEGATIVE</u>



Supplementary Figure 1 WJ-MSC Flow cytometry.

### Quantitation data for Cycling A.Green

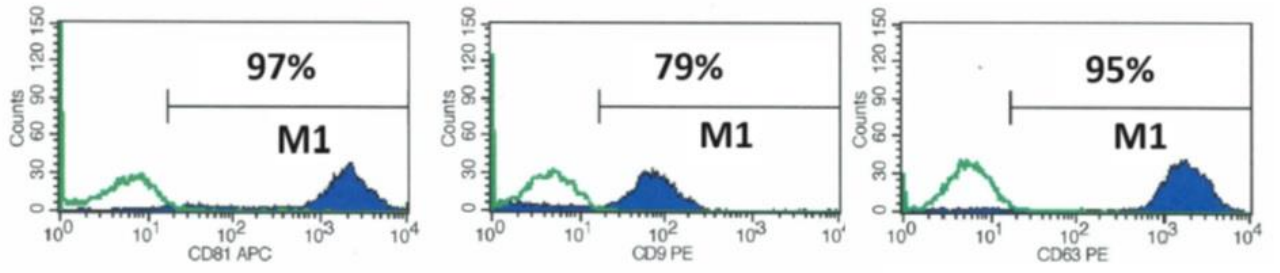


### Standard Curve

No.	Colour	Name	Type	Ct	Ct Comment	Given Conc (Copies)	Calc Conc (Copies)
1	Red	POU5F1	Unknown	23.02			
2	Yellow	ZFP42	Unknown	24.54			
3	Blue	TERT	Unknown	29.47			
4	Purple	SOX2	Unknown	30.47			
5	Pink	NES	Unknown	22.07			
β	Light Blue	RUNX2	Unknown	22.99			
7	Teal	BMP2	Unknown	29.90			
8	Light Red	PPAR-G	Unknown	20.05			
9	Green	JAG1	Unknown	21.13			
10	Magenta	VIM	Unknown	12.52			
11	Black	ICAM1	Unknown	19.47			
12	Cyan	VCAM1	Unknown	20.81			
13	Gold	GAPDH	Unknown	18.98			
14	Light Green	BLANK	Unknown		NEG (NTC)		

NEG (NTC) - Sample cancelled due to NTC Threshold. NEG (R. Eff) - Sample cancelled as efficiency less than reaction efficiency threshold. **Legend:**

### Supplementary Figure 2 WJ-MSC gene expression.



Supplementary Figure 3 Exosome flow cytometry.