

**Supplementary Table 1. ASR, change in case numbers and EAPC for IBD in different countries**

Country	ASR per 100,000 NO. UI)	Cases change			EAPC
		Case 1990	Case 2019	Cases change (%)	
Afghanistan	2.4(2-3)	191.8	684.1	256.7	0.25
Albania	9.5(8.1-11.1)	245.9	290.6	18.2	0.61
Algeria	3.9(3.2-4.7)	576.8	1657.4	187.3	1.04
American Samoa	0.6(0.5-0.8)	0.2	0.3	77.4	0.94
Andorra	9.2(7.8-10.8)	5.4	9.5	74.0	0.24
Angola	1.3(1.1-1.6)	74.7	263.4	252.8	0.67
Argentina	1.7(1.4-2)	524.4	831.0	58.5	0.20
Armenia	6.6(5.6-8)	178.5	236.7	32.6	0.67
Australia	19.6(17.4- 22.2)	2212.9	5354.0	141.9	1.68
Austria	20.8(18.8- 23.2)	1617.6	1939.5	19.9	0.29
Azerbaijan	7(5.9-8.4)	431.5	804.7	86.5	0.14
Bahamas	3.3(2.7-3.9)	5.2	13.8	164.9	1.33
Bahrain	3.2(2.7-3.9)	13.4	58.3	333.9	0.67
Bangladesh	2.2(1.8-2.6)	1355.1	3404.2	151.2	0.72
Barbados	5.1(4.4-6.1)	11.1	18.0	62.7	0.64
Belarus	5.7(4.9-6.7)	511.5	649.4	27.0	0.82
Belgium	13.4(11.6- 15.7)	829.3	1651.2	99.1	1.93
Belize	2.7(2.3-3.3)	2.8	10.3	264.4	0.88
Benin	1.2(1-1.4)	31.7	96.9	205.8	0.36
Bermuda	2.9(2.5-3.5)	1.6	2.5	56.5	0.76

Bhutan	1.9(1.6-2.3)	7.5	14.1	88.5	0.36
Bolivia	1.8(1.6-2.2)	78.5	196.6	150.3	0.26
Bosnia and Herzegovina	9.3(8.2-10.5)	344.9	365.2	5.9	0.88
Botswana	1.5(1.2-1.8)	11.6	31.4	170.9	0.38
Brazil	5.3(4.6-6.1)	7717.1	12705.5	64.6	-0.52
Bulgaria	10.3(8.8-12.2)	741.6	850.9	14.7	0.98
Burkina Faso	1(0.9-1.3)	59.7	159.4	167.2	0.29
Burundi	1(0.8-1.2)	34.2	78.6	130.0	0.16
Cambodia	0.5(0.4-0.6)	30.1	79.3	163.5	0.93
Cameroon	1.3(1.1-1.6)	80.0	265.0	231.3	0.35
Canada	37(35.6-38.3)	11089.4	14206.1	28.1	-0.09
Central African Republic	1.1(0.9-1.4)	20.7	42.4	104.8	0.08
Chad	1(0.8-1.2)	35.3	96.7	173.5	0.31
Chile	2.4(2.1-2.8)	313.7	485.4	54.7	0.10
China	3(2.6-3.5)	17221.4	51462.0	198.8	2.50
Colombia	2.2(1.9-2.6)	598.5	1128.9	88.6	-0.02
Comoros	1.1(0.9-1.4)	3.1	7.1	132.7	0.53
Cook Islands	0.7(0.6-0.9)	0.1	0.1	68.1	1.14
Costa Rica	2.3(2-2.7)	63.0	119.9	90.4	-0.32
Côte d'Ivoire	1.3(1.1-1.6)	84.5	241.6	185.9	0.56
Croatia	13.1(12.1-14.2)	527.4	591.2	12.1	0.89
Cuba	2.5(2.1-3)	235.2	358.7	52.5	0.62
Cyprus	6.1(5.5-6.7)	32.3	91.5	183.0	1.47
Czech Republic	9.3(8.6-10)	543.0	1041.2	91.8	2.25
Democratic Republic of the Congo	1.2(1-1.5)	256.3	745.1	190.8	0.67

Denmark	21.8(20.4-23.3)	1373.3	1333.6	-2.9	-0.38
Djibouti	1(0.8-1.2)	3.0	10.4	246.1	0.17
Dominica	3(2.5-3.6)	1.3	2.3	73.4	1.35
Dominican Republic	2.7(2.2-3.2)	116.7	288.7	147.4	1.01
Ecuador	1.9(1.7-2.1)	119.9	323.3	169.6	0.68
Egypt	4.2(3.5-5.2)	1624.3	3832.9	136.0	0.67
El Salvador	2.4(2.1-2.8)	100.8	148.1	47.0	-0.16
Equatorial Guinea	1.6(1.4-1.9)	2.8	15.4	444.7	1.66
Eritrea	1.1(0.9-1.3)	17.7	54.0	205.4	0.64
Estonia	6.8(6-7.6)	61.9	104.9	69.4	2.15
Ethiopia	1(0.8-1.2)	269.8	710.1	163.2	0.62
Fiji	0.7(0.6-0.9)	3.4	6.5	90.6	1.02
Finland	24.7(22.1-27.3)	789.9	1499.7	89.9	1.76
France	13.4(12.6-14.1)	6784.2	8431.0	24.3	0.62
Gabon	1.6(1.3-1.9)	8.7	23.3	166.5	0.89
Gambia	1.2(1-1.5)	5.8	19.2	233.1	1.03
Georgia	6.3(5.4-7.4)	381.4	275.4	-27.8	-0.09
Germany	18.4(16.1-20.9)	9760.3	16745.6	71.6	1.86
Ghana	1.2(1-1.5)	103.9	307.0	195.3	0.64
Greece	7.9(7.4-8.6)	908.1	911.3	0.4	0.03
Greenland	24.2(20.8-27.9)	11.3	15.4	36.8	0.76
Grenada	3(2.5-3.6)	1.6	3.4	114.8	0.99
Guam	0.8(0.6-0.9)	0.7	1.3	90.7	1.05
Guatemala	2.3(2-2.7)	130.1	358.3	175.4	-0.01

Guinea	1.1(0.9-1.3)	42.2	90.6	114.8	0.30
Guinea-Bissau	1.1(0.9-1.4)	6.5	15.1	130.0	0.41
Guyana	2.9(2.4-3.4)	14.4	21.9	52.4	0.79
Haiti	2.4(2-3)	96.1	263.3	174.1	0.75
Honduras	2.2(1.8-2.6)	72.9	182.2	149.9	-0.21
Hungary	21.6(20.4- 22.7)	1315.9	2268.3	72.4	2.04
Iceland	17(14.8-19.2)	29.6	64.7	118.8	1.46
India	2.3(1.9-2.9)	15360.3	31774.5	106.9	0.17
Indonesia	0.6(0.5-0.7)	681.1	1504.0	120.8	0.86
Iran	3.4(2.9-4.2)	1347.4	3166.8	135.0	0.14
Iraq	2.5(2.1-3.1)	239.8	984.0	310.3	1.16
Ireland	8.2(7.1-9.4)	351.0	436.8	24.5	-0.59
Israel	7.1(6.5-7.8)	297.8	651.8	118.8	0.43
Italy	18.2(16.1- 20.4)	12109.4	12194.2	0.7	-0.14
Jamaica	2.5(2.1-3)	38.3	75.6	97.5	0.96
Japan	19.6(16.9- 22.7)	16382.8	22435.8	36.9	1.95
Jordan	6.9(5.8-8.1)	129.9	778.6	499.3	1.57
Kazakhstan	7.2(6.1-8.6)	922.2	1389.0	50.6	0.63
Kenya	1.2(1-1.4)	123.7	426.8	245.0	0.98
Kiribati	0.6(0.5-0.7)	0.3	0.6	108.1	0.62
Kuwait	3.7(3.1-4.5)	61.2	195.2	219.2	0.27
Kyrgyzstan	6.4(5.4-7.5)	221.6	390.3	76.1	0.20
Laos	0.5(0.4-0.6)	12.5	35.0	180.1	1.08
Latvia	7.1(6.3-8.1)	161.0	154.4	-4.1	0.87
Lebanon	3.6(3-4.4)	65.2	193.5	197.1	1.46
Lesotho	1.4(1.1-1.6)	15.5	24.5	58.6	0.49

Liberia	1.2(1-1.4)	14.7	42.8	191.9	0.43
Libya	2.4(2-3)	51.3	178.0	247.0	1.33
Lithuania	8.3(7.9-8.7)	233.0	257.6	10.6	1.16
Luxembourg	15.6(13.6-17.9)	83.9	111.2	32.6	-0.66
Madagascar	1.1(0.9-1.3)	79.3	207.1	161.1	0.24
Malawi	1.1(0.9-1.3)	60.4	138.9	130.0	0.49
Malaysia	0.8(0.7-0.9)	72.0	251.2	248.6	1.77
Maldives	0.5(0.4-0.6)	0.6	2.8	391.7	1.42
Mali	1(0.9-1.2)	53.4	143.1	168.0	0.41
Malta	8.9(7.7-10.5)	31.6	43.8	38.7	0.40
Marshall Islands	0.6(0.5-0.8)	0.1	0.3	126.2	1.09
Mauritania	1.1(0.9-1.4)	15.7	33.8	115.1	0.03
Mauritius	0.6(0.5-0.7)	5.0	8.8	77.5	0.89
Mexico	3.1(2.7-3.5)	2540.3	3944.5	55.3	-0.91
Moldova	4.5(4.2-4.9)	201.3	193.8	-3.7	0.07
Monaco	9.5(8.1-11.2)	3.5	4.2	20.6	0.04
Mongolia	7.4(6.2-8.7)	97.8	251.1	156.8	0.57
Montenegro	9.5(8-11.2)	58.9	66.7	13.2	0.15
Morocco	1.6(1.4-1.9)	300.5	598.6	99.2	0.41
Mozambique	1(0.8-1.2)	76.0	192.0	152.7	0.63
Myanmar	0.6(0.5-0.7)	141.3	306.4	116.8	1.15
Namibia	1.4(1.2-1.7)	12.7	27.4	115.6	0.24
Nauru	0.6(0.5-0.8)	0.0	0.1	49.3	1.03
Nepal	2.2(1.8-2.8)	242.0	624.3	157.9	1.03
Netherlands	7.2(6.2-8.4)	2179.5	1460.0	-33.0	-2.06
New Zealand	22.4(19.8-25.5)	766.1	1092.3	42.6	0.23
Nicaragua	2.1(1.8-2.4)	60.3	124.4	106.3	-0.51

Niger	0.9(0.8-1.1)	42.4	122.4	188.6	0.16
Nigeria	1.2(1-1.5)	634.4	1712.9	170.0	0.56
Niue	0.7(0.6-0.9)	0.0	0.0	24.3	1.22
North Korea	1.3(1.1-1.5)	196.5	387.2	97.1	1.02
Northern Mariana Islands	0.7(0.6-0.9)	0.3	0.4	46.1	0.76
Norway	36.6(31.7-42.1)	1361.6	2113.1	55.2	0.84
Oman	2.7(2.3-3.3)	38.4	142.8	271.7	0.40
Pakistan	2.3(1.9-2.9)	1474.4	3887.6	163.7	0.64
Palau	0.8(0.6-0.9)	0.1	0.2	109.4	1.09
Palestine	2.9(2.5-3.5)	28.9	122.1	322.5	1.33
Panama	2.2(1.9-2.6)	50.2	92.5	84.3	-0.37
Papua New Guinea	0.5(0.4-0.6)	13.1	43.4	232.3	0.91
Paraguay	3.4(2.9-3.9)	108.6	222.3	104.7	-0.10
Peru	1.8(1.5-2.1)	273.7	608.3	122.3	0.26
Philippines	0.6(0.5-0.8)	242.3	656.6	171.0	0.94
Poland	13.3(11.8-14.9)	14031.4	5805.2	-58.6	-3.19
Portugal	9.4(8.5-10.3)	607.1	1112.3	83.2	1.86
Puerto Rico	2.9(2.6-3.3)	86.6	122.1	41.0	0.72
Qatar	3.6(3-4.3)	13.0	125.1	862.7	0.77
Republic of Congo	1.4(1.2-1.7)	18.3	60.1	229.1	0.87
Romania	5.6(5.1-6.3)	1287.4	1186.6	-7.8	0.25
Russia	7.9(6.8-9.2)	13521.7	14514.1	7.3	-0.05
Rwanda	1(0.9-1.3)	45.0	101.8	126.3	0.26
Saint Lucia	2.6(2.2-3.2)	2.5	5.4	117.8	0.55
Samoa	0.6(0.5-0.7)	0.6	1.1	88.8	0.97
San Marino	9.1(7.7-10.6)	2.2	3.4	56.3	0.24
Sao Tome and Principe	1.2(1-1.4)	0.7	1.9	155.4	0.84

Saudi Arabia	2.7(2.2-3.2)	341.2	1122.1	228.8	0.02
Senegal	1.2(1-1.5)	51.2	132.0	158.0	0.45
Serbia	12.7(11-14.7)	909.5	1243.7	36.8	1.23
Seychelles	0.6(0.5-0.7)	0.3	0.7	112.4	0.80
Sierra Leone	1.1(0.9-1.4)	27.1	67.0	147.8	0.29
Singapore	3.2(2.7-3.9)	122.9	215.0	75.0	-0.27
Slovakia	9.7(8.7-10.8)	566.3	569.2	0.5	-0.22
Slovenia	12.4(11-14.1)	231.0	276.8	19.8	0.48
Solomon Islands	0.6(0.5-0.7)	1.1	3.0	181.4	0.86
Somalia	0.8(0.6-0.9)	36.6	100.2	174.1	-0.04
South Africa	1.4(1.2-1.6)	376.0	746.3	98.5	0.15
South Korea	7.3(7-7.6)	1586.7	4407.2	177.8	2.72
South Sudan	1(0.8-1.2)	37.0	63.5	71.5	0.18
Spain	14(13.5-14.6)	4177.2	6797.8	62.7	1.17
Sri Lanka	1.1(1-1.3)	106.9	267.8	150.6	1.90
Sudan	2.8(2.3-3.3)	334.0	934.0	179.6	0.75
Suriname	2.8(2.3-3.3)	7.5	16.9	124.2	0.75
Sweden	27.3(24-31.3)	2295.6	3173.4	38.2	0.51
Switzerland	11.5(10.2-13)	853.0	1108.5	30.0	0.15
Syria	3.2(2.6-3.8)	241.3	448.8	86.0	0.54
Taiwan (Province of China)	1.7(1.5-1.9)	149.4	469.6	214.4	3.07
Tajikistan	6.2(5.3-7.3)	225.2	518.4	130.2	0.23
Tanzania	1(0.9-1.3)	155.7	421.2	170.5	0.49
Thailand	0.5(0.4-0.6)	183.2	373.2	103.7	1.19
Timor-Leste	0.5(0.4-0.6)	2.3	5.8	153.1	1.24
Togo	1.2(1-1.5)	22.1	74.3	236.3	0.88
Tokelau	0.6(0.5-0.8)	0.0	0.0	22.3	0.78
Tonga	0.7(0.5-0.8)	0.3	0.6	72.1	1.32
Tunisia	2.7(2.3-3.3)	167.9	349.1	107.9	0.50

Turkey	6.4(5.5-7.4)	2084.2	5960.6	186.0	1.77
Turkmenistan	7.7(6.5-9)	187.7	382.8	103.9	0.45
Tuvalu	0.7(0.6-0.8)	0.0	0.1	94.7	1.22
Uganda	1.1(0.9-1.3)	96.9	280.6	189.6	0.60
UK	23.1(20.3-26.3)	12548.1	16687.9	33.0	0.51
Ukraine	6.2(5.3-7.3)	3459.3	3625.6	4.8	0.34
United Arab Emirates	4.1(3.4-5)	58.2	520.4	793.6	0.86
Uruguay	1.8(1.5-2.1)	41.3	65.5	58.9	1.06
USA	23.2(21.2-25.6)	96513.1	85388.0	-11.5	-1.37
Uzbekistan	6.9(5.9-8.2)	868.1	2213.0	154.9	0.82
Vanuatu	0.6(0.5-0.7)	0.5	1.5	186.0	0.94
Venezuela	2.2(1.8-2.5)	351.5	654.8	86.3	-0.13
Vietnam	1.4(1.1-1.7)	401.8	1481.7	268.8	2.55
Yemen	2.5(2.1-3.1)	192.4	646.8	236.2	0.63
Zambia	1.1(0.9-1.4)	53.2	143.0	168.9	0.15
Zimbabwe	1.3(1.1-1.6)	81.4	145.5	78.8	0.19

---

ASR, age standardized rate; EAPC, estimated annual percentage change.



**Supplementary Table 2 Incidence and age-standardized incidence of inflammatory bowel disease in various regions of the world**

**from 1990 to 2019 and temporal trends from 1990 to 2019**

Country	1990		2019		1990-2019	
	Incident rate per 100,000 NO. (95% UI)	ASR per 100,000 NO. (95% UI)	Incident rate per 100,000 NO. (95% UI)	ASR per 100,000 NO. (95% UI)	AAPC NO. (95%CI)	
Afghanistan	191.8 (159-228.3)	2.3 (1.9-2.7)	684.1 (557.4-828.2)	2.4 (2-3)	0.245 (0.194 - 0.296)	-
Albania	245.9 (208.5-289.3)	7.9 (6.8-9.3)	290.6 (249.4-341.1)	9.5 (8.1-11.1)	0.6 (0.549 - 0.651)	
Algeria	576.8 (507.9-647.7)	2.9 (2.6-3.2)	1657.4 (1373.3-2042.5)	3.9 (3.2-4.7)	1.035 (1 - 1.07)	
American Samoa	0.2 (0.2-0.2)	0.5 (0.4-0.6)	0.3 (0.3-0.4)	0.6 (0.5-0.8)	0.929 (0.871 - 0.987)	-
Andorra	5.4 (4.6-6.4)	8.6 (7.3-10.1)	9.5 (8.1-11.3)	9.2 (7.8-10.8)	0.26 (0.195 - 0.324)	
Angola	74.7 (61.2-91.6)	1.1 (0.9-1.3)	263.4 (219-314.6)	1.3 (1.1-1.6)	0.668 (0.62 - 0.716)	
Antigua and Barbuda	1.2 (1-1.4)	2.1 (1.7-2.5)	2.7 (2.3-3.2)	2.6 (2.2-3.1)	0.813 (0.766 - 0.86)	
Argentina	524.4 (436.7-621.2)	1.6 (1.4-1.9)	831 (695.3-985.6)	1.7 (1.4-2)	0.184 (0.144 - 0.225)	-

Armenia	178.5 (149.6-209.3)	5.5 (4.6-6.5)	236.7 (200.1-282.6)	6.6 (5.6-8)	0.663 (0.637 - 0.689)	-
Australia	2212.9 (1883.7-2621.4)	12.1 (10.3-14.3)	5354 (4766.2-6019.8)	19.6 (17.4-22.2)	1.701 (1.602 - 1.8)	-
Austria	1617.6 (1445.6-1788.5)	19.1 (17.1-21.1)	1939.5 (1749.4-2181.7)	20.8 (18.8-23.2)	0.299 (0.227 - 0.372)	-
Azerbaijan	431.5 (364.7-510.1)	6.7 (5.7-8)	804.7 (676.9-965.3)	7 (5.9-8.4)	0.139 (0.109 - 0.169)	-
Bahamas	5.2 (4.4-6.1)	2.2 (1.9-2.6)	13.8 (11.5-16.7)	3.3 (2.7-3.9)	1.335 (1.286 - 1.384)	-
Bahrain	13.4 (11.5-15.3)	2.6 (2.3-3)	58.3 (47.7-71.9)	3.2 (2.7-3.9)	0.653 (0.584 - 0.722)	-
Bangladesh	1355.1 (1104.6-1656)	1.8 (1.5-2.2)	3404.2 (2788.5-4136.3)	2.2 (1.8-2.6)	0.715 (0.612 - 0.818)	-
Barbados	11.1 (9.4-13.1)	4.3 (3.6-5.1)	18 (15.3-21.8)	5.1 (4.4-6.1)	0.65 (0.596 - 0.704)	-
Belarus	511.5 (436.1-607.5)	4.5 (3.9-5.3)	649.4 (551.8-774.4)	5.7 (4.9-6.7)	0.814 (0.795 - 0.834)	-
Belgium	829.3 (786.8-874.6)	7.7 (7.3-8.1)	1651.2 (1450.7-1917.9)	13.4 (11.6-15.7)	1.944 (1.877 - 2.01)	-

Belize	2.8 (2.4-3.4)	2.1 (1.8-2.5)	10.3 (8.6-12.6)	2.7 (2.3-3.3)	0.875 (0.813 - 0.937)	-
Benin	31.7 (26.3-38.8)	1 (0.9-1.3)	96.9 (80.1-115.5)	1.2 (1-1.4)	0.362 (0.328 - 0.397)	-
Bermuda	1.6 (1.3-1.9)	2.3 (2-2.9)	2.5 (2.1-3)	2.9 (2.5-3.5)	0.757 (0.669 - 0.846)	-
Bhutan	7.5 (6-9.3)	1.7 (1.4-2.1)	14.1 (11.7-17.4)	1.9 (1.6-2.3)	0.378 (0.318 - 0.438)	-
Bolivia (Plurinational State of)	78.5 (66.6-93.2)	1.7 (1.5-2)	196.6 (167.4-236.9)	1.8 (1.6-2.2)	0.279 (0.199 - 0.36)	
Bosnia and Herzegovina	344.9 (301.2-394.7)	7.2 (6.3-8.2)	365.2 (324.9-417.1)	9.3 (8.2-10.5)	0.871 (0.748 - 0.995)	-
Botswana	11.6 (9.6-14.2)	1.3 (1.1-1.6)	31.4 (25.9-38.6)	1.5 (1.2-1.8)	0.387 (0.29 - 0.485)	
Brazil	7717.1 (6763.2-8849.4)	6.2 (5.5-7)	12705.5 (11141.5-14618.1)	5.3 (4.6-6.1)	-0.499 (-0.587 - 0.41)	-
Brunei Darussalam	12.7 (10.2-15.3)	5 (4.1-6)	25.7 (20.8-30.8)	5.1 (4.2-6.1)	0.094 (0.085 - 0.104)	-
Bulgaria	741.6 (626-865.4)	7.8 (6.6-9.1)	850.9 (729.4-995.7)	10.3 (8.8-12.2)	0.979 (0.965 - 0.993)	-
Burkina Faso	59.7 (49.6-71.7)	1 (0.8-1.2)	159.4 (132.3-194.2)	1 (0.9-1.3)	0.273 (0.216 - 0.331)	-

Burundi	34.2 (28.2-41.2)	0.9 (0.8-1.1)	78.6 (64-95.3)	1 (0.8-1.2)	0.156 (0.141 - 0.171)	-
Cabo Verde	2.4 (2-2.9)	1 (0.8-1.2)	6.4 (5.3-7.7)	1.2 (1-1.4)	0.743 (0.676 - 0.81)	-
Cambodia	30.1 (23.5-36.9)	0.4 (0.3-0.5)	79.3 (64.3-96)	0.5 (0.4-0.6)	0.911 (0.811 - 1.012)	-
Cameroon	80 (66.2-97)	1.2 (1-1.4)	265 (218.8-322.1)	1.3 (1.1-1.6)	0.322 (0.208 - 0.437)	-
Canada	11089.4 (10767.5-11408.7)	37.9 (36.8-39)	14206.1 (13696.5-14687.6)	37 (35.6-38.3)	-0.067 (-0.138 - 0.004)	-
Central African Republic	20.7 (16.9-25.4)	1.1 (0.9-1.4)	42.4 (35.1-51)	1.1 (0.9-1.4)	0.08 (0.056 - 0.103)	-
Chad	35.3 (29.2-43)	0.9 (0.8-1.1)	96.7 (79.6-116.4)	1 (0.8-1.2)	0.303 (0.273 - 0.333)	-
Chile	313.7 (267.3-361.4)	2.4 (2-2.7)	485.4 (419.8-561.9)	2.4 (2.1-2.8)	0.127 (0.014 - 0.239)	-
China	17221.4 (14326.5-20399.5)	1.5 (1.2-1.7)	51462 (43933-60474.5)	3 (2.6-3.5)	2.503 (2.444 - 2.563)	-
Colombia	598.5 (505.4-707.4)	2.2 (1.9-2.6)	1128.9 (959.5-1327.1)	2.2 (1.9-2.6)	-0.005 (-0.058 - 0.049)	-
Comoros	3.1 (2.5-3.6)	1 (0.8-1.2)	7.1 (5.9-8.6)	1.1 (0.9-1.4)	0.531 (0.503 - 0.558)	-

Congo	18.3 (15.2-22)	1.1 (0.9-1.3)	60.1 (50.2-72.1)	1.4 (1.2-1.7)	0.886 (0.825 - 0.946)	-
Cook Islands	0.1 (0.1-0.1)	0.5 (0.4-0.6)	0.1 (0.1-0.2)	0.7 (0.6-0.9)	1.138 (1.072 - 1.204)	-
Costa Rica	63 (53-73.9)	2.5 (2.2-3)	119.9 (102.6-141.3)	2.3 (2-2.7)	-0.305 (-0.364 - 0.247)	-
Croatia	527.4 (493.3-561.7)	10.1 (9.5-10.8)	591.2 (544.3-645.1)	13.1 (12.1-14.2)	0.908 (0.87 - 0.946)	-
Cuba	235.2 (198.5-284.8)	2.1 (1.8-2.5)	358.7 (301.6-430.1)	2.5 (2.1-3)	0.646 (0.532 - 0.761)	-
Cyprus	32.3 (27.9-37.9)	4 (3.4-4.7)	91.5 (82.5-101.4)	6.1 (5.5-6.7)	1.456 (1.381 - 1.53)	-
Czechia	543 (462.5-656.3)	4.9 (4.1-5.8)	1041.2 (973.6-1114.8)	9.3 (8.6-10)	2.217 (2.094 - 2.34)	-
Côte d'Ivoire	84.5 (69.6-103.4)	1.1 (0.9-1.3)	241.6 (197.9-297.9)	1.3 (1.1-1.6)	0.546 (0.509 - 0.584)	-
Democratic People's Republic of Korea	196.5 (164-236.3)	1 (0.8-1.1)	387.2 (326.1-462.9)	1.3 (1.1-1.5)	1.009 (0.896 - 1.122)	-
Democratic Republic of the Congo	256.3 (213.7-313.6)	1 (0.8-1.2)	745.1 (615.8-915.8)	1.2 (1-1.5)	0.669 (0.639 - 0.698)	-
Denmark	1373.3 (1280.9-1471.5)	24.4 (22.7-26.1)	1333.6 (1247.4-1419.2)	21.8 (20.4-23.3)	-0.356 (-0.396 - 0.316)	-

Djibouti	3 (2.5-3.7)	1 (0.8-1.2)	10.4 (8.6-12.6)	1 (0.8-1.2)	0.175 (0.14 - 0.21)		
Dominica	1.3 (1.1-1.6)	2 (1.7-2.4)	2.3 (2-2.8)	3 (2.5-3.6)	1.339 (1.265 - 1.413)		-
Dominican Republic	116.7 (96.2-139.3)	2 (1.7-2.4)	288.7 (240.5-349.5)	2.7 (2.2-3.2)	1.006 (0.936 - 1.075)		-
Ecuador	119.9 (105-136.3)	1.6 (1.4-1.8)	323.3 (285.5-363.2)	1.9 (1.7-2.1)	0.661 (0.545 - 0.777)		-
Egypt	1624.3 (1414.5-1813.7)	3.5 (3-3.9)	3832.9 (3168.4-4688.7)	4.2 (3.5-5.2)	0.671 (0.637 - 0.704)		-
El Salvador	100.8 (85-119.8)	2.5 (2.1-3)	148.1 (126.2-172.6)	2.4 (2.1-2.8)	-0.173 (-0.263 - 0.083)		-
Equatorial Guinea	2.8 (2.4-3.4)	1 (0.8-1.2)	15.4 (12.7-18.7)	1.6 (1.4-1.9)	1.666 (1.621 - 1.711)		-
Eritrea	17.7 (14.6-21.4)	0.9 (0.8-1.1)	54 (44.1-64.8)	1.1 (0.9-1.3)	0.637 (0.608 - 0.666)		-
Estonia	61.9 (54.9-70.1)	3.7 (3.3-4.2)	104.9 (93.7-118.3)	6.8 (6-7.6)	2.146 (2.069 - 2.223)		-
Eswatini	6.4 (5.3-7.8)	1.3 (1.1-1.5)	13.5 (11.1-16.2)	1.5 (1.3-1.8)	0.531 (0.485 - 0.576)		-

Ethiopia	269.8 (224.1-325.2)	0.8 (0.7-1)	710.1 (589.7-855.5)	1 (0.8-1.2)	0.627 (0.594 - 0.661)	-
Fiji	3.4 (2.8-4.1)	0.5 (0.4-0.6)	6.5 (5.5-7.9)	0.7 (0.6-0.9)	1.008 (0.983 - 1.033)	-
Finland	789.9 (760.3-819)	14.9 (14.3-15.5)	1499.7 (1345.5-1651.7)	24.7 (22.1-27.3)	1.785 (1.692 - 1.877)	-
France	6784.2 (6568.2-6990.1)	11.2 (10.9-11.6)	8431 (7970.4-8812)	13.4 (12.6-14.1)	0.621 (0.553 - 0.689)	-
Gabon	8.7 (7.3-10.6)	1.2 (1-1.5)	23.3 (19.3-28.3)	1.6 (1.3-1.9)	0.889 (0.867 - 0.911)	-
Gambia	5.8 (4.7-7)	0.9 (0.8-1.1)	19.2 (15.9-23.6)	1.2 (1-1.5)	1.01 (0.91 - 1.111)	-
Georgia	381.4 (324.6-448.9)	6.5 (5.5-7.6)	275.4 (233.5-326.6)	6.3 (5.4-7.4)	-0.097 (-0.127 - 0.068)	-
Germany	9760.3 (8591.9-11203.6)	10.8 (9.4-12.4)	16745.6 (14804.9-18955.7)	18.4 (16.1-20.9)	1.853 (1.756 - 1.95)	-
Ghana	103.9 (86.2-124.1)	1 (0.8-1.2)	307 (254.8-370.4)	1.2 (1-1.5)	0.62 (0.547 - 0.693)	-
Greece	908.1 (785.1-1044.8)	7.9 (6.8-9)	911.3 (849.1-975.2)	7.9 (7.4-8.6)	0.024 (-0.005 - 0.052)	-
Greenland	11.3 (9.5-13.6)	19.4 (16.5-23)	15.4 (13.4-17.8)	24.2 (20.8-27.9)	0.754 (0.73 - 0.777)	-

Grenada	1.6 (1.3-1.9)	2.2 (1.9-2.7)	3.4 (2.8-4.1)	3 (2.5-3.6)	1.004 (0.943 - 1.066)	-
Guam	0.7 (0.6-0.8)	0.6 (0.5-0.7)	1.3 (1.1-1.6)	0.8 (0.6-0.9)	1.053 (0.932 - 1.174)	-
Guatemala	130.1 (110-154.4)	2.3 (2-2.8)	358.3 (302.5-422.4)	2.3 (2-2.7)	-0.009 (-0.073 - 0.056)	-
Guinea	42.2 (35.2-51.7)	1 (0.8-1.2)	90.6 (74.7-109.5)	1.1 (0.9-1.3)	0.293 (0.259 - 0.326)	-
Guinea-Bissau	6.5 (5.4-8)	1 (0.8-1.2)	15.1 (12.2-18.3)	1.1 (0.9-1.4)	0.401 (0.371 - 0.432)	-
Guyana	14.4 (11.9-17.2)	2.3 (1.9-2.7)	21.9 (18.3-26.3)	2.9 (2.4-3.4)	0.792 (0.712 - 0.872)	-
Haiti	96.1 (80.1-115.8)	1.9 (1.6-2.3)	263.3 (218-323.9)	2.4 (2-3)	0.764 (0.688 - 0.839)	-
Honduras	72.9 (61.3-85.7)	2.3 (2-2.7)	182.2 (153.3-215.1)	2.2 (1.8-2.6)	-0.197 (-0.275 - 0.119)	-
Hungary	1315.9 (1215.6-1407.5)	12 (11.1-12.8)	2268.3 (2160.2-2383.9)	21.6 (20.4-22.7)	2.035 (1.893 - 2.178)	-
Iceland	29.6 (25.3-34.5)	11.2 (9.6-13)	64.7 (56-73)	17 (14.8-19.2)	1.41 (1.328 - 1.491)	-



India	15360.3 18814.8)	(12630.9- 2.2 (1.9-2.7)	31774.5 38972.1)	(26432.6- 2.3 (1.9-2.9)	0.207 0.419)	(-0.004 -)
Indonesia	681.1 (551.3-828.1)	0.4 (0.4-0.5)	1504 (1248-1808.5)	0.6 (0.5-0.7)	0.855 0.933)	(0.777 -)
Iran (Islamic Republic of)	1347.4 1654.1)	(1111.2- 3.3 (2.7-4.1)	3166.8 3894.5)	(2599.5- 3.4 (2.9-4.2)	0.152 (0.09 - 0.215)	
Iraq	239.8 (202.5-282)	1.8 (1.5-2.1)	984 (810.2-1190.9)	2.5 (2.1-3.1)	1.13 (1.02 - 1.24)	
Ireland	351 (298.2-410.8)	9.7 (8.2-11.4)	436.8 (381.8-503.8)	8.2 (7.1-9.4)	-0.563 0.463)	(-0.664 - -)
Israel	297.8 (257.9-342.3)	6.2 (5.4-7.2)	651.8 (598.6-721.1)	7.1 (6.5-7.8)	0.448 0.518)	(0.377 -)
Italy	12109.4 13752.9)	(10640.6- 18.9 (16.6- 21.5)	12194.2 13882.2)	(10758.6- 18.2 (16.1- 20.4)	-0.111 0.016)	(-0.239 -)
Jamaica	38.3 (32-45.6)	1.9 (1.6-2.3)	75.6 (63.6-90.4)	2.5 (2.1-3)	1.007 1.165)	(0.849 -)
Japan	16382.8 19566.7)	(13833- 11.2 (9.5- 13.3)	22435.8 25906.1)	(19353.2- 19.6 (16.9- 22.7)	1.931 (1.83 - 2.033)	
Jordan	129.9 (113.6-147.4)	4.4 (3.9-5)	778.6 (649.1-916.6)	6.9 (5.8-8.1)	1.572 1.652)	(1.492 -)

Kazakhstan	922.2 (781.9-1089.3)	6 (5.1-7.1)	1389 (1185.5-1660.4)	7.2 (6.1-8.6)	0.612 (0.569 - 0.654)	-
Kenya	123.7 (102.5-148.6)	0.9 (0.7-1)	426.8 (356.7-512)	1.2 (1-1.4)	0.949 (0.895 - 1.004)	-
Kiribati	0.3 (0.2-0.4)	0.5 (0.4-0.6)	0.6 (0.5-0.7)	0.6 (0.5-0.7)	0.614 (0.596 - 0.631)	-
Kuwait	61.2 (57-66.5)	3.4 (3.2-3.7)	195.2 (160.7-239.3)	3.7 (3.1-4.5)	0.294 (0.203 - 0.384)	-
Kyrgyzstan	221.6 (188.5-260.2)	6 (5.1-7.1)	390.3 (329.1-460.3)	6.4 (5.4-7.5)	0.192 (0.147 - 0.237)	-
Lao People's Democratic Republic	12.5 (9.8-15.4)	0.4 (0.3-0.5)	35 (28.5-43.3)	0.5 (0.4-0.6)	1.077 (1.054 - 1.1)	-
Latvia	161 (139.4-186.7)	5.6 (4.8-6.4)	154.4 (134.6-179)	7.1 (6.3-8.1)	0.859 (0.785 - 0.933)	-
Lebanon	65.2 (53.9-80.4)	2.3 (1.9-2.9)	193.5 (160.5-237.9)	3.6 (3-4.4)	1.445 (1.388 - 1.502)	-
Lesotho	15.5 (12.9-18.6)	1.2 (1-1.4)	24.5 (20.4-29.8)	1.4 (1.1-1.6)	0.488 (0.454 - 0.521)	-
Liberia	14.7 (12.2-17.9)	1 (0.9-1.3)	42.8 (35.5-51.6)	1.2 (1-1.4)	0.429 (0.359 - 0.499)	-

Libya	51.3 (42.5-61.6)	1.6 (1.4-2)	178 (146-219.7)	2.4 (2-3)	1.343 (1.264 - 1.422)	-
Lithuania	233 (203.8-266.6)	5.9 (5.2-6.7)	257.6 (245.2-270.7)	8.3 (7.9-8.7)	1.163 (1.13 - 1.196)	-
Luxembourg	83.9 (73.1-96.5)	18.8 (16.3-21.7)	111.2 (98-127.7)	15.6 (13.6-17.9)	-0.644 (-0.68 - 0.607)	-
Madagascar	79.3 (65.6-96.3)	1 (0.8-1.2)	207.1 (172.4-252.2)	1.1 (0.9-1.3)	0.241 (0.206 - 0.276)	-
Malawi	60.4 (49.8-73.8)	1 (0.8-1.2)	138.9 (113.6-170)	1.1 (0.9-1.3)	0.49 (0.466 - 0.515)	-
Malaysia	72 (61.5-82.8)	0.5 (0.4-0.5)	251.2 (222.7-283.4)	0.8 (0.7-0.9)	1.758 (1.701 - 1.816)	-
Maldives	0.6 (0.5-0.7)	0.3 (0.3-0.4)	2.8 (2.3-3.5)	0.5 (0.4-0.6)	1.41 (1.37 - 1.451)	-
Mali	53.4 (44.5-66)	0.9 (0.8-1.1)	143.1 (119.9-172.5)	1 (0.9-1.2)	0.397 (0.362 - 0.433)	-
Malta	31.6 (27.2-37.4)	7.9 (6.8-9.4)	43.8 (38.4-50.7)	8.9 (7.7-10.5)	0.404 (0.389 - 0.418)	-
Marshall Islands	0.1 (0.1-0.2)	0.5 (0.4-0.6)	0.3 (0.3-0.4)	0.6 (0.5-0.8)	1.068 (0.98 - 1.157)	-
Mauritania	15.7 (13.1-19)	1.1 (0.9-1.3)	33.8 (28.2-40.9)	1.1 (0.9-1.4)	0.023 (-0.018 - 0.064)	-
Mauritius	5 (4-6)	0.5 (0.4-0.6)	8.8 (7.4-10.5)	0.6 (0.5-0.7)	0.882 (0.849 - 0.915)	-

Mexico	2540.3 2962.9)	(2183.7- 4 (3.5-4.6)	3944.5 4538.1)	(3432.4- 3.1 (2.7-3.5)	-0.895 (-0.959 - - 0.832)
Micronesia (Federated States of)	0.4 (0.3-0.5)	0.5 (0.4-0.6)	0.6 (0.5-0.8)	0.7 (0.6-0.8)	1.039 (0.924 - - 1.153)
Monaco	3.5 (3-4.1)	9.4 (8-11.1)	4.2 (3.6-5)	9.5 (8.1-11.2)	0.04 (0.032 - 0.049)
Mongolia	97.8 (82.4-115.5)	6.2 (5.3-7.5)	251.1 (210.1-300.1)	7.4 (6.2-8.7)	0.564 (0.54 - 0.589)
Montenegro	58.9 (50.3-68.9)	9.1 (7.7-10.6)	66.7 (57-78.8)	9.5 (8-11.2)	0.15 (0.131 - 0.17)
Morocco	300.5 (251.8-354.2)	1.4 (1.2-1.7)	598.6 (508-711.7)	1.6 (1.4-1.9)	0.403 (0.364 - - 0.441)
Mozambique	76 (63-93.2)	0.8 (0.7-1)	192 (158.4-230.1)	1 (0.8-1.2)	0.636 (0.606 - - 0.666)
Myanmar	141.3 (112.8-173.2)	0.4 (0.3-0.5)	306.4 (253.2-377.8)	0.6 (0.5-0.7)	1.15 (1.126 - 1.174)
Namibia	12.7 (10.6-15.5)	1.3 (1.1-1.6)	27.4 (22.9-33.3)	1.4 (1.2-1.7)	0.244 (0.223 - - 0.265)
Nauru	0 (0-0)	0.5 (0.4-0.6)	0.1 (0-0.1)	0.6 (0.5-0.8)	1.017 (0.851 - - 1.183)
Nepal	242 (197.6-300.9)	1.7 (1.4-2.1)	624.3 (515.2-764.1)	2.2 (1.8-2.8)	1.049 (0.996 - - 1.102)
Netherlands	2179.5 2290.5)	(2069.9- 13.2 (12.6- 13.9)	1460 (1269-1692.3)	7.2 (6.2-8.4)	-2.095 (-2.403 - - 1.786)

New Zealand	766.1 (662.9-876.2)	21 (18.2-24)	1092.3 (974-1229.5)	22.4 (19.8-25.5)	0.228 (0.197 - 0.259)	-
Nicaragua	60.3 (50.1-72)	2.4 (2-2.8)	124.4 (105.5-146.9)	2.1 (1.8-2.4)	-0.508 (-0.584 - 0.433)	-
Niger	42.4 (34.9-51.3)	0.9 (0.7-1)	122.4 (100.9-148.4)	0.9 (0.8-1.1)	0.158 (0.131 - 0.185)	-
Nigeria	634.4 (535.9-771.4)	1 (0.9-1.2)	1712.9 (1439.9-2066.3)	1.2 (1-1.5)	0.565 (0.517 - 0.613)	-
Niue	0 (0-0)	0.5 (0.4-0.6)	0 (0-0)	0.7 (0.6-0.9)	1.216 (1.173 - 1.259)	-
North Macedonia	193.5 (164.8-227.2)	9.3 (7.9-10.9)	253.3 (216-297.4)	10 (8.5-11.7)	0.232 (0.208 - 0.256)	-
Northern Mariana Islands	0.3 (0.2-0.3)	0.6 (0.5-0.7)	0.4 (0.3-0.4)	0.7 (0.6-0.9)	0.767 (0.708 - 0.826)	-
Norway	1361.6 (1163.5-1593.8)	28.7 (24.5-33.6)	2113.1 (1834.1-2432.2)	36.6 (31.7-42.1)	0.829 (0.77 - 0.888)	-
Oman	38.4 (31.2-45.9)	2.4 (2-2.9)	142.8 (115.3-173.3)	2.7 (2.3-3.3)	0.395 (0.262 - 0.528)	-
Pakistan	1474.4 (1218.1-1792)	1.9 (1.6-2.3)	3887.6 (3192.9-4838.5)	2.3 (1.9-2.9)	0.662 (0.618 - 0.707)	-

Palau	0.1 (0.1-0.1)	0.6 (0.5-0.7)	0.2 (0.1-0.2)	0.8 (0.6-0.9)	1.086 (1.041 - 1.132)	-
Palestine	28.9 (23.8-34.8)	2 (1.7-2.4)	122.1 (101.2-144.9)	2.9 (2.5-3.5)	1.335 (1.268 - 1.402)	-
Panama	50.2 (43.5-57.8)	2.4 (2.1-2.8)	92.5 (78.9-107.8)	2.2 (1.9-2.6)	-0.356 (-0.446 - 0.266)	-
Papua New Guinea	13.1 (10.6-15.6)	0.4 (0.3-0.5)	43.4 (35.5-52.8)	0.5 (0.4-0.6)	0.904 (0.846 - 0.961)	-
Paraguay	108.6 (94.8-125.5)	3.5 (3-4)	222.3 (190.1-260.6)	3.4 (2.9-3.9)	-0.1 (-0.257 - 0.058)	
Peru	273.7 (228.2-324.9)	1.6 (1.4-2)	608.3 (513.9-723.1)	1.8 (1.5-2.1)	0.267 (0.209 - 0.325)	-
Philippines	242.3 (196.7-292.4)	0.5 (0.4-0.6)	656.6 (541.1-799.5)	0.6 (0.5-0.8)	0.943 (0.901 - 0.984)	-
Poland	14031.4 (11891.1-16418)	34 (28.9-39.7)	5805.2 (5141.2-6573)	13.3 (11.8-14.9)	-3.198 (-3.325 - 3.071)	-
Portugal	607.1 (532.7-697.2)	5.5 (4.8-6.3)	1112.3 (1024.8-1207.7)	9.4 (8.5-10.3)	1.843 (1.682 - 2.004)	-
Puerto Rico	86.6 (79.4-94.3)	2.4 (2.2-2.6)	122.1 (108.2-137.5)	2.9 (2.6-3.3)	0.695 (0.499 - 0.891)	-

Qatar	13 (10.5-15.6)	2.8 (2.4-3.4)	125.1 (101.9-152.1)	3.6 (3-4.3)	0.768 (0.743 - 0.794)	-
Republic of Korea	1586.7 (1390.2-1776.8)	3.4 (3-3.8)	4407.2 (4219.7-4589.3)	7.3 (7-7.6)	2.731 (2.548 - 2.914)	-
Republic of Moldova	201.3 (169-241.5)	4.4 (3.7-5.3)	193.8 (179.1-209.7)	4.5 (4.2-4.9)	0.09 (0.061 - 0.119)	
Romania	1287.4 (1095-1511.9)	5.2 (4.4-6.2)	1186.6 (1085.2-1305.3)	5.6 (5.1-6.3)	0.221 (0.152 - 0.29)	
Russian Federation	13521.7 (11621.6-15867.4)	8 (6.9-9.3)	14514.1 (12472.5-17147.7)	7.9 (6.8-9.2)	-0.034 (-0.067 - 0.001)	-
Rwanda	45 (37.4-54.7)	1 (0.8-1.2)	101.8 (84-123.7)	1 (0.9-1.3)	0.278 (0.238 - 0.319)	-
Saint Kitts and Nevis	0.8 (0.7-0.9)	2.2 (1.8-2.6)	2 (1.7-2.5)	2.9 (2.5-3.5)	1.073 (0.863 - 1.284)	-
Saint Lucia	2.5 (2.1-3)	2.2 (1.9-2.7)	5.4 (4.5-6.6)	2.6 (2.2-3.2)	0.554 (0.508 - 0.6)	
Saint Vincent and the Grenadines	1.9 (1.6-2.3)	2.1 (1.8-2.5)	3.5 (3-4.3)	2.8 (2.3-3.4)	0.969 (0.905 - 1.033)	-
Samoa	0.6 (0.5-0.7)	0.5 (0.4-0.5)	1.1 (0.9-1.4)	0.6 (0.5-0.7)	0.953 (0.859 - 1.048)	-
San Marino	2.2 (1.9-2.6)	8.5 (7.2-10)	3.4 (3-4)	9.1 (7.7-10.6)	0.238 (0.227 - 0.249)	-

Sao Tome and Principe	0.7 (0.6-0.9)	0.9 (0.8-1.1)	1.9 (1.6-2.3)	1.2 (1-1.4)	0.864 (0.733 - 0.996)	-
Saudi Arabia	341.2 (287-404.1)	2.6 (2.2-3.1)	1122.1 (928.7-1352.8)	2.7 (2.2-3.2)	0.024 (-0.076 - 0.123)	-
Senegal	51.2 (42.3-61.8)	1 (0.9-1.3)	132 (109.1-160.8)	1.2 (1-1.5)	0.448 (0.42 - 0.476)	-
Serbia	909.5 (775.9-1060.3)	8.9 (7.6-10.4)	1243.7 (1068.6-1447.9)	12.7 (11-14.7)	1.229 (1.192 - 1.265)	-
Seychelles	0.3 (0.3-0.4)	0.5 (0.4-0.6)	0.7 (0.6-0.8)	0.6 (0.5-0.7)	0.797 (0.756 - 0.839)	-
Sierra Leone	27.1 (22.5-33.1)	1 (0.9-1.3)	67 (55.5-81.4)	1.1 (0.9-1.4)	0.276 (0.238 - 0.313)	-
Singapore	122.9 (100.5-146.7)	3.5 (2.9-4.1)	215 (177.9-263.7)	3.2 (2.7-3.9)	-0.301 (-0.379 - 0.224)	-
Slovakia	566.3 (500.6-637.1)	10.4 (9.2-11.6)	569.2 (509.4-645.5)	9.7 (8.7-10.8)	-0.211 (-0.259 - 0.163)	-
Slovenia	231 (201.7-270.1)	10.8 (9.4-12.5)	276.8 (244.7-316)	12.4 (11-14.1)	0.481 (0.467 - 0.495)	-
Solomon Islands	1.1 (0.8-1.3)	0.4 (0.4-0.5)	3 (2.4-3.7)	0.6 (0.5-0.7)	0.866 (0.794 - 0.937)	-



Somalia	36.6 (30-44.4)	0.8 (0.6-0.9)	100.2 (81.1-123.7)	0.8 (0.6-0.9)	-0.031 (-0.048 - 0.014)
South Africa	376 (316.6-451.9)	1.3 (1.1-1.6)	746.3 (636.2-890.8)	1.4 (1.2-1.6)	0.16 (0.114 - 0.206)
South Sudan	37 (30.5-44.9)	0.9 (0.8-1.1)	63.5 (52.7-76.1)	1 (0.8-1.2)	0.18 (0.161 - 0.2)
Spain	4177.2 (4025.4-4320.4)	10 (9.6-10.4)	6797.8 (6557.7-7061.6)	14 (13.5-14.6)	1.167 (1.103 - 1.232)
Sri Lanka	106.9 (87.7-130.6)	0.7 (0.6-0.8)	267.8 (238.7-301.5)	1.1 (1-1.3)	1.926 (1.819 - 2.033)
Sudan	334 (274.7-399.7)	2.2 (1.9-2.7)	934 (774.6-1114.1)	2.8 (2.3-3.3)	0.741 (0.717 - 0.764)
Suriname	7.5 (6.3-9)	2.2 (1.9-2.7)	16.9 (14.1-20.5)	2.8 (2.3-3.3)	0.76 (0.69 - 0.831)
Sweden	2295.6 (2012.1-2617.1)	23.5 (20.5-27)	3173.4 (2813.8-3639.7)	27.3 (24-31.3)	0.522 (0.472 - 0.572)
Switzerland	853 (755.5-975.4)	10.9 (9.7-12.5)	1108.5 (993.4-1265.1)	11.5 (10.2-13)	0.146 (0.1 - 0.193)
Syrian Arab Republic	241.3 (199.6-288.6)	2.7 (2.2-3.3)	448.8 (375.6-543.6)	3.2 (2.6-3.8)	0.532 (0.461 - 0.603)
Taiwan (Province of China)	149.4 (129.4-170.6)	0.7 (0.6-0.8)	469.6 (420.5-526.2)	1.7 (1.5-1.9)	3.107 (2.939 - 3.274)
Tajikistan	225.2 (190.4-266.6)	5.8 (4.9-6.9)	518.4 (439.2-612)	6.2 (5.3-7.3)	0.187 (0.004 - 0.37)

Thailand	183.2 (142.2-230.3)	0.3 (0.3-0.4)	373.2 (309.3-455.1)	0.5 (0.4-0.6)	1.19 (1.124 - 1.257)	
Timor-Leste	2.3 (1.8-2.8)	0.4 (0.3-0.4)	5.8 (4.7-7.1)	0.5 (0.4-0.6)	1.237 (1.198 - 1.276)	-
Togo	22.1 (18.3-27)	1 (0.8-1.2)	74.3 (61.6-89.6)	1.2 (1-1.5)	0.857 (0.763 - 0.951)	-
Tokelau	0 (0-0)	0.5 (0.4-0.6)	0 (0-0)	0.6 (0.5-0.8)	0.757 (0.667 - 0.847)	-
Tonga	0.3 (0.3-0.4)	0.4 (0.4-0.5)	0.6 (0.5-0.7)	0.7 (0.5-0.8)	1.31 (1.21 - 1.411)	
Trinidad and Tobago	27.2 (22.6-32.6)	2.5 (2.1-3)	52.4 (44.2-63.6)	3.2 (2.7-3.9)	0.795 (0.708 - 0.882)	-
Tunisia	167.9 (138.6-202)	2.4 (2-2.9)	349.1 (287.7-425.9)	2.7 (2.3-3.3)	0.501 (0.477 - 0.524)	-
Turkey	2084.2 (1859.5-2316.5)	3.9 (3.5-4.3)	5960.6 (5119.1-6893)	6.4 (5.5-7.4)	1.825 (1.628 - 2.023)	-
Turkmenistan	187.7 (157.3-222.2)	6.8 (5.7-8)	382.8 (324.3-450.5)	7.7 (6.5-9)	0.449 (0.375 - 0.523)	-
Tuvalu	0 (0-0)	0.5 (0.4-0.6)	0.1 (0.1-0.1)	0.7 (0.6-0.8)	1.215 (1.183 - 1.246)	-
Uganda	96.9 (79-118.6)	0.9 (0.8-1.1)	280.6 (231.7-342.2)	1.1 (0.9-1.3)	0.599 (0.575 - 0.623)	-

Ukraine	3459.3 4104.1)	(2934.8- 5.6 (4.8-6.7)	3625.6 (3093-4258.3)	6.2 (5.3-7.3)	0.351 (0.296 - 0.406)	-
United Arab Emirates	58.2 (47.2-71)	3.2 (2.7-3.9)	520.4 (410.3-650.9)	4.1 (3.4-5)	0.85 (0.825 - 0.875)	
United Kingdom	12548.1 14290.3)	(11093.8- 19.9 (17.5- 22.9)	16687.9 19052.4)	(14853.9- 23.1 (20.3- 26.3)	0.515 (0.499 - 0.531)	-
United Republic of Tanzania	155.7 (127.9-187.7)	0.9 (0.8-1.1)	421.2 (348.3-511)	1 (0.9-1.3)	0.495 (0.464 - 0.526)	-
United States of America	96513.1 112506.7)	(83182- 34.6 (29.8- 40.3)	85388 94653.4)	(77956.1- 23.2 (21.2- 25.6)	-1.364 (-1.453 - 1.275)	-
United States Virgin Islands	2.3 (2-2.8)	2.2 (1.9-2.7)	3.6 (3-4.4)	2.9 (2.5-3.5)	0.906 (0.868 - 0.944)	-
Uruguay	41.3 (34.9-49.4)	1.3 (1.1-1.6)	65.5 (55.4-78.1)	1.8 (1.5-2.1)	1.033 (0.95 - 1.115)	
Uzbekistan	868.1 (731.7-1029.7)	5.4 (4.6-6.5)	2213 (1878.3-2642.3)	6.9 (5.9-8.2)	0.814 (0.705 - 0.924)	-
Vanuatu	0.5 (0.4-0.6)	0.4 (0.4-0.5)	1.5 (1.2-1.8)	0.6 (0.5-0.7)	0.943 (0.809 - 1.077)	-
Venezuela (Bolivarian Republic of)	351.5 (305.3-400.5)	2.3 (2-2.6)	654.8 (555.1-767.3)	2.2 (1.8-2.5)	-0.152 (-0.203 - 0.101)	-
Viet Nam	401.8 (315.5-499.3)	0.7 (0.5-0.8)	1481.7 1836.2)	(1200.8- 1.4 (1.1-1.7)	2.49 (2.299 - 2.681)	

Yemen	192.4 (157.5-230)	2.1 (1.7-2.6)	646.8 (527.2-792.9)	2.5 (2.1-3.1)	0.628 0.656)	(0.599	-
Zambia	53.2 (43.9-63.9)	1.1 (0.9-1.3)	143 (117.5-174.1)	1.1 (0.9-1.4)	0.158 0.202)	(0.113	-
Zimbabwe	81.4 (67.1-98.8)	1.2 (1-1.5)	145.5 (120.3-177.7)	1.3 (1.1-1.6)	0.192 0.247)	(0.138	-

---

ASR, age standardized rate; CI, confidence interval; AAPC, average annual percent change; UI, uncertainty interval.

**Supplementary Table 3. Statistics and predictions of the number of cases in all age groups**

Year	Nordpred model prediction			BAPC model prediction		
	Female	Male	Both	Female	Male	Both
1990-1994	142225.48	156186.65	298412.13	142218.08	156175.18	298393.26
1995-1999	144378.14	159874.29	304252.43	144371.34	159872.68	304244.02
2000-2004	150232.95	166563.86	316796.81	150224.54	166555.2	316779.74
2005-2009	163065.11	180400.3	343465.41	163056.12	180392.94	343449.06
2010-2014	176509.09	195967.95	372477.04	176500.64	195955.72	372456.36
2015-2019	187106.9	208487.85	395594.75	187096.82	208483.32	395580.14
2020-2024	198917.37	223168.3	422085.67	196718.66	223717.66	420436.32
2025-2029	209558.26	235965.99	445524.25	203432.12	235119.6	438551.72
2030-2034	220261.17	248281.06	468542.23	209959.46	246439.26	456398.72
2035-2039	230995.95	259891.01	490886.96	217203.36	259198.7	476402.06

**Supplementary Table 4. Statistics and prediction of the number of cases and incidence rate in female**

Age group		1990-2039year									
		1990- 1994	1995- 1999	2000- 2004	2005- 2009	2010- 2014	2015- 2019	2020- 2024	2025- 2029	2030- 2034	2035- 2039
0 to 4	Number of case	68.48	69.64	71	72.31	74.45	74.32	60.47	59.55	58.2	56.97
	Incidence rate	0.02	0.02	0.02	0.02	0.02	0.02	0.02	0.02	0.02	0.02
5 to 9	Number of case	826.48	907.73	924.34	920.92	938.81	922.48	978.95	969.54	954.32	933.15
	Incidence rate	0.28	0.3	0.32	0.31	0.31	0.29	0.3	0.3	0.3	0.3
10 to 14	Number of case	2777.69	3143.23	3420.15	3336.03	3265.86	3223.44	3427.94	3495.76	3462.85	3409.03
	Incidence rate	1.03	1.08	1.13	1.13	1.1	1.05	1.08	1.08	1.08	1.08
15 to 19	Number of case	6529.25	7274.73	7958.85	8284.75	8015.62	7733.11	8118.42	8399.73	8567.85	8488.59
	Incidence rate	2.56	2.73	2.73	2.71	2.7	2.59	2.64	2.64	2.64	2.64
20 to 24	Number of case	11740.01	12084.38	12731.09	13540.17	14131.78	13442.5	13224.26	13278	13576.25	13767.67
	Incidence rate	4.74	4.79	4.81	4.65	4.62	4.53	4.42	4.34	4.28	4.26

25	to	Number of	15896.69	16049.29	15819.07	16590.51	17895.28	18388.46	17797.23	17505.79	17701.59	18222.22
29		case										
		Incidence rate	6.9	6.54	6.27	6.28	6.18	6.05	5.97	5.87	5.81	5.77
30	to	Number of	17630.21	17562.08	17513.37	17722.94	18839.55	20030.71	20864.83	20178.94	19973.3	20322.18
34		case										
		Incidence rate	8.85	7.67	7.16	7.07	7.19	6.98	6.88	6.81	6.73	6.7
35	to	Number of	16909.74	16933.35	17270.86	18086.62	18543.65	19335.79	20976.66	21688.83	21097.91	21006
39		case										
		Incidence rate	9.38	8.61	7.6	7.46	7.48	7.45	7.28	7.19	7.16	7.12
40	to	Number of	14921.18	15019.33	15509.9	17005.78	17979.13	18171.37	19455.22	20950.19	21792.86	21320.25
44		case										
		Incidence rate	9.81	8.56	8.12	7.68	7.6	7.48	7.51	7.33	7.28	7.29
45	to	Number of	11533.51	12780.24	13503.31	15061.42	16622.67	17399.29	17794.74	19062.36	20656	21618.01
49		case										
		Incidence rate	9.56	8.7	7.97	8.11	7.69	7.52	7.36	7.44	7.31	7.3
50	to	Number of	9761.32	9595.99	11292.37	12961.9	14473.48	15898.9	16685.64	17106.92	18437.77	20107.54
54		case										
		Incidence rate	9.17	8.36	8.01	7.9	8	7.54	7.29	7.2	7.33	7.23

55	to	Number of	8335.64	8168.28	8480.06	10788.87	12390.11	13789.05	14983.64	15860.94	16356.78	17738.6
59		case										
		Incidence rate	8.73	8.05	7.71	7.9	7.75	7.82	7.27	7.11	7.06	7.23
60	to	Number of	7451.48	6913.18	7204.4	8039.37	10202.91	11715.2	12827.31	13993.44	14909.69	15471.29
64		case										
		Incidence rate	8.83	7.62	7.41	7.55	7.67	7.53	7.52	7.05	6.92	6.92
65	to	Number of	6294.67	5943.26	5886.55	6564.36	7357.29	9339.19	10640.35	11770.28	12950.09	13900.54
69		case										
		Incidence rate	9.03	7.74	7.07	7.29	7.39	7.46	7.25	7.32	6.9	6.82
70	to	Number of	4551.81	4821.19	4860.57	5180.72	5805.83	6530.82	8305.07	9560.12	10685.59	11880.14
74		case										
		Incidence rate	8.95	8.03	7.26	7.04	7.21	7.26	7.32	7.15	7.25	6.87
75	to	Number of	3286.86	3284.28	3719.82	4032.58	4341.61	4866.34	5578.73	7196.75	8382.98	9489.65
79		case										
		Incidence rate	9.12	8.17	7.71	7.38	7.06	7.14	7.21	7.32	7.19	7.34
80	to	Number of	2177.6	2113.47	2256.26	2754.62	3019.71	3259.53	3787.99	4409.56	5791.97	6838.02
84		case										
		Incidence rate	9.35	8.5	7.92	7.89	7.45	7.01	7.19	7.28	7.43	7.34



85 plus	Number of cases	1532.86	1714.49	1810.98	2121.24	2611.35	2986.4	3409.92	4071.56	4905.17	6426.1
	Incidence rate	9.96	9.17	8.5	8.4	8.19	7.59	7.33	7.49	7.62	7.82

---

**Supplementary Table 5. Statistics and prediction of the number of cases and incidence rate in male**

Age group		1990-2039year									
		1990-1994	1995-1999	2000-2004	2005-2009	2010-2014	2015-2019	2020-2024	2025-2029	2030-2034	2035-2039
0 to 4	Number of case	77.46	79.26	81.21	82.42	84.5	84.44	68.66	67.44	65.8	64.34
	Incidence rate	0.02	0.02	0.03	0.02	0.02	0.02	0.02	0.02	0.02	0.02
5 to 9	Number of case	941.09	1034.82	1058.09	1044.47	1055.59	1041.71	1103.49	1091.62	1071.84	1046.31
	Incidence rate	0.3	0.32	0.34	0.33	0.32	0.31	0.32	0.32	0.32	0.32
10 to 14	Number of case	3156.01	3606.71	3951.9	3841.95	3760.03	3713.35	3950.8	4028.8	3986.34	3914.8
	Incidence rate	1.11	1.16	1.22	1.22	1.18	1.14	1.16	1.16	1.16	1.16
15 to 19	Number of case	7477.63	8454.43	9363.82	9742.34	9425.69	9102.61	9675.48	10028.4	10229.05	10123.19
	Incidence rate	2.84	3.06	3.07	3.04	3.02	2.89	2.95	2.95	2.95	2.95
20 to 24	Number of case	13381.14	14262.43	15036.84	16026.6	16696.54	15986.81	16384.73	16897.17	17467	17795.69
	Incidence rate	5.3	5.61	5.64	5.42	5.36	5.24	5.21	5.19	5.17	5.17

25	to	Number of	17972	18908.4	18816.01	19522.66	21101.1	21765.94	21202.16	21608.43	22329.11	23128.69
29		case										
		Incidence rate	7.68	7.57	7.47	7.4	7.24	7.08	6.96	6.93	6.91	6.9
30	to	Number of	19882.14	20309.62	20532.19	20830.7	21978.71	23505.84	24103.93	23466.43	23959.76	24804.9
34		case										
		Incidence rate	9.75	8.71	8.28	8.25	8.31	8.07	7.89	7.77	7.75	7.74
35	to	Number of	19359.3	19258.57	19762.42	20892.88	21525.53	22337.7	23947.17	24445.73	23842.74	24387.87
39		case										
		Incidence rate	10.39	9.52	8.53	8.45	8.54	8.47	8.24	8.09	7.98	7.97
40	to	Number of	17339.58	17194.71	17489.01	19269.29	20630.38	20920.26	22176.98	23649.52	24194.83	23641.93
44		case										
		Incidence rate	10.97	9.45	8.87	8.52	8.54	8.47	8.48	8.25	8.11	8.01
45	to	Number of	13516.52	14667.37	15187.58	16782.88	18767.56	19868.88	20717.72	21771.24	23277.16	23871.85
49		case										
		Incidence rate	10.75	9.65	8.7	8.85	8.59	8.47	8.5	8.49	8.28	8.15
50	to	Number of	11358.5	10995.61	12654.31	14309.66	16058.66	17860.13	19407.23	20116.72	21195.74	22727.73
54		case										
		Incidence rate	10.39	9.31	8.83	8.66	8.89	8.53	8.48	8.5	8.51	8.3

55	to	Number of	9493.33	9086.46	9405.85	11756.39	13508.1	15112.82	17024.25	18475.34	19198.02	20283.63
59		case										
		Incidence rate	9.91	8.99	8.55	8.72	8.65	8.81	8.48	8.43	8.46	8.48
60	to	Number of	8024.49	7414.07	7645.67	8608.1	10882.4	12504.75	13896.16	15644.15	17037.12	17755.6
64		case										
		Incidence rate	9.84	8.49	8.21	8.35	8.56	8.48	8.62	8.31	8.28	8.32
65	to	Number of	5998.81	5906.77	5925.14	6598.68	7611.37	9646.48	11004.35	12284.4	13916.55	15227.66
69		case										
		Incidence rate	9.77	8.42	7.79	7.99	8.2	8.36	8.25	8.43	8.13	8.11
70	to	Number of	3846.54	4146.82	4436.34	4830.6	5513.19	6444.86	8111.09	9358.39	10538.47	12036.41
74		case										
		Incidence rate	9.46	8.41	7.75	7.62	7.88	8.07	8.22	8.12	8.31	8.03
75	to	Number of	2371.69	2439.46	2861.31	3309.94	3722.11	4294.71	5082.26	6515.61	7595.96	8656.52
79		case										
		Incidence rate	9.34	8.38	7.94	7.72	7.62	7.81	7.98	8.17	8.08	8.28
80	to	Number of	1297.38	1308.26	1463.4	1856.6	2218.74	2533.14	3044.63	3672.85	4793.66	5663.14
84		case										
		Incidence rate	9.29	8.55	8.11	8.07	7.84	7.64	7.9	8.08	8.27	8.2

85 plus	Number of cases	693.04	800.52	892.77	1094.14	1427.75	1763.42	2267.21	2843.75	3581.91	4760.75
	Incidence rate	9.72	9.17	8.81	8.85	8.83	8.43	8.34	8.6	8.8	9.02

---

**Supplementary Table 6. Number of Female IBD cases and incidence rate by age group and projections for the next 20 years**

Age group		1990-2019 year					2020-2039 year (BAPC model prediction)				
		1990-1994	1995-1999	2000-2004	2005-2009	2010-2014	2015-2019	2020-2024	2025-2029	2030-2034	2035-2039
0 to 4	Number of case	74.176	70.683	68.044	69.489	71.151	70.912	52.724	45.653	40.835	38.446
	Incidence rate	0.024	0.023	0.022	0.022	0.022	0.022	0.020	0.018	0.016	0.016
5 to 9	Number of case	882.852	908.247	893.947	899.177	922.371	922.772	933.322	901.584	872.141	852.531
	Incidence rate	0.303	0.304	0.306	0.305	0.303	0.294	0.287	0.280	0.275	0.275
10 to 14	Number of case	2870.776	3143.329	3358.667	3297.231	3254.805	3238.553	3307.028	3258.599	3171.424	3121.021
	Incidence rate	1.066	1.077	1.109	1.118	1.096	1.057	1.038	1.003	0.985	0.985
15 to 19	Number of case	6627.380	7241.216	7886.962	8254.513	8018.085	7765.030	7930.662	7920.284	7873.702	7759.994
	Incidence rate	2.594	2.715	2.703	2.700	2.698	2.600	2.582	2.492	2.429	2.416
20 to 24	Number of case	11793.64	12041.75	12656.53	13521.95	14153.60	13499.78	13771.00	13635.29	13725.22	13809.59
	Incidence rate	4.762	4.774	4.778	4.643	4.629	4.544	4.600	4.454	4.332	4.272

25	to	Number of	15907.75	16010.80	15781.83	16577.93	17912.87	18446.43	18725.40	18200.58	18122.92	18431.07
29		case	7	6	8	7	2	9	4	3	4	1
		Incidence rate	6.905	6.521	6.260	6.271	6.186	6.067	6.285	6.106	5.944	5.839
30	to	Number of	17591.26	17554.30	17506.16	17731.76	18846.76	20066.41	21703.34	21078.32	20585.28	20683.09
34		case	6	0	8	7	4	1	8	5	5	5
		Incidence rate	8.844	7.674	7.158	7.075	7.195	6.990	7.152	7.111	6.939	6.814
35	to	Number of	16873.81	16923.14	17295.97	18096.94	18545.97	19343.09	21175.43	22087.55	21546.04	21220.58
39		case	1	6	8	0	2	0	2	2	5	4
		Incidence rate	9.364	8.620	7.612	7.465	7.476	7.448	7.348	7.324	7.312	7.194
40	to	Number of	14863.84	15038.26	15541.05	17029.64	17973.36	18159.49	19051.87	20579.51	21565.63	21211.56
44		case	1	6	3	9	5	6	6	1	9	4
		Incidence rate	9.795	8.580	8.136	7.692	7.597	7.479	7.353	7.201	7.207	7.254
45	to	Number of	11494.18	12786.70	13551.53	15077.19	16623.44	17366.31	17256.43	18055.92	19597.80	20715.82
49		case	0	4	4	5	3	6	5	2	7	9
		Incidence rate	9.530	8.731	7.994	8.123	7.698	7.502	7.133	7.052	6.934	6.996
50	to	Number of	9722.221	9617.406	11323.59	12986.53	14467.20	15865.76	15923.05	16016.66	16835.02	18438.80
54		case			6	7	2	2	7	5	2	7
		Incidence rate	9.130	8.386	8.035	7.909	8.006	7.525	6.954	6.741	6.690	6.632

55	to	Number of	8306.155	8180.672	8519.071	10799.89	12396.16	13748.77	14324.24	14621.36	14769.73	15662.36
59		case				3	6	4	4	4	6	0
		Incidence rate	8.708	8.063	7.739	7.908	7.753	7.804	6.955	6.552	6.375	6.379
60	to	Number of	7415.848	6933.222	7227.160	8059.684	10202.06	11687.41	12166.58	12924.36	13256.35	13510.27
64		case					6	6	8	0	8	5
		Incidence rate	8.798	7.652	7.431	7.564	7.672	7.512	7.134	6.513	6.158	6.041
65	to	Number of	6264.111	5958.526	5915.304	6571.052	7363.945	9311.425	10215.13	10800.20	11553.15	11969.65
69		case							7	1	5	1
		Incidence rate	8.999	7.769	7.102	7.295	7.391	7.443	6.966	6.721	6.158	5.870
70	to	Number of	4536.771	4834.723	4879.993	5190.304	5797.950	6510.213	7898.735	8855.718	9444.648	10235.72
74		case										0
		Incidence rate	8.937	8.060	7.296	7.048	7.197	7.239	6.965	6.624	6.415	5.925
75	to	Number of	3278.706	3300.342	3732.480	4032.057	4340.650	4845.336	5360.407	6626.488	7506.159	8129.851
79		case										
		Incidence rate	9.093	8.222	7.735	7.381	7.064	7.111	6.932	6.746	6.440	6.289
80	to	Number of	2177.266	2119.613	2269.015	2748.215	3012.563	3252.745	3610.839	4097.477	5150.138	5928.420
84		case										
		Incidence rate	9.356	8.525	7.966	7.879	7.434	6.999	6.859	6.764	6.609	6.361



85 to 89	Number of case	1055.183	1148.363	1172.734	1372.153	1696.360	1872.899	2033.865	2291.205	2671.509	3444.861
	Incidence rate	9.652	8.857	8.245	8.097	7.898	7.300	6.812	6.690	6.623	6.524
90 to 94	Number of case	377.255	433.770	492.178	550.075	675.277	843.951	943.865	1034.114	1198.746	1452.334
	Incidence rate	10.568	9.519	8.866	8.645	8.429	8.015	7.405	6.897	6.800	6.789
95 plus	Number of case	104.881	126.248	152.281	190.311	226.011	279.499	334.687	401.223	472.948	587.330
	Incidence rate	12.178	10.975	10.063	9.779	9.481	9.049	8.620	7.918	7.403	7.360

---

**Supplementary Table 7. Number of Male IBD cases and incidence rate by age group and projections for the next 20 years**

Age group		1990-2019 year					2020-2039 year (BAPC model prediction)				
		1990-1994	1995-1999	2000-2004	2005-2009	2010-2014	2015-2019	2020-2024	2025-2029	2030-2034	2035-2039
0 to 4	Number of case	84.223	79.970	78.034	78.996	80.746	80.746	61.032	53.528	47.848	44.661
	Incidence rate	0.026	0.025	0.024	0.024	0.024	0.024	0.022	0.020	0.018	0.017
5 to 9	Number of case	986.602	1038.782	1030.561	1026.078	1044.531	1043.268	1069.710	1040.724	1010.859	993.974
	Incidence rate	0.319	0.326	0.328	0.324	0.320	0.311	0.307	0.302	0.299	0.301
10 to 14	Number of case	3223.643	3696.297	3906.673	3813.497	3752.684	3723.695	3854.923	3829.108	3747.801	3720.085
	Incidence rate	1.138	1.170	1.204	1.207	1.182	1.139	1.132	1.103	1.091	1.103
15 to 19	Number of case	7550.591	8640.957	9310.748	9717.116	9427.265	9129.182	9601.944	9701.501	9731.722	9688.299
	Incidence rate	2.866	3.074	3.051	3.028	3.015	2.903	2.932	2.858	2.811	2.828
20 to 24	Number of case	13436.30	14335.75	14976.55	16006.43	16711.28	16030.95	17110.65	17343.37	17663.22	17990.19
	Incidence rate	9	3	9	0	4	3	5	2	3	7
		5.321	5.624	5.623	5.419	5.365	5.259	5.445	5.327	5.232	5.223

25 29	to	Number of	18000.39	18949.68	18776.97	19505.06	21112.46	21809.35	22904.44	23107.86	23543.17	24265.26
		case	6	1	9	7	6	0	4	7	0	1
		Incidence rate	7.692	7.551	7.456	7.392	7.245	7.096	7.516	7.409	7.283	7.237
30 34	to	Number of	19866.29	20240.29	20518.19	20827.68	21987.11	23538.18	25906.21	25851.97	26190.73	26954.14
		case	6	5	8	1	8	2	2	7	3	4
		Incidence rate	9.745	8.529	8.270	8.251	8.315	8.082	8.480	8.558	8.468	8.406
35 39	to	Number of	19334.92	19234.34	19773.72	20893.87	21530.38	22355.29	25038.00	26340.38	26388.64	26986.77
		case	7	8	9	3	0	6	5	3	3	2
		Incidence rate	10.385	9.265	8.536	8.453	8.544	8.479	8.614	8.717	8.828	8.814
40 44	to	Number of	17291.05	17097.32	17509.90	19282.19	20627.52	20925.90	22414.14	24448.49	25830.30	26121.05
		case	7	9	2	1	4	9	1	0	7	0
		Incidence rate	10.962	9.264	8.883	8.530	8.535	8.474	8.571	8.531	8.663	8.852
45 49	to	Number of	13479.91	14696.38	15227.77	16793.72	18765.62	19853.26	20317.29	21441.62	23493.16	25069.48
		case	2	1	3	5	2	5	4	7	6	3
		Incidence rate	10.727	9.356	8.721	8.857	8.593	8.466	8.333	8.365	8.353	8.559
50 54	to	Number of	11321.37	11238.44	12683.33	14333.55	16048.58	17835.98	18447.79	19055.53	20201.93	22368.09
		case	7	2	0	6	9	3	9	4	6	3
		Incidence rate	10.360	9.192	8.854	8.670	8.890	8.523	8.058	8.051	8.108	8.169

55	to	Number of	9464.844	8992.196	9440.822	11770.34	13510.86	15076.72	16025.61	16951.55	17584.78	18839.23
59		case				5	1	5	6	0	4	8
		Incidence rate	9.890	8.844	8.582	8.735	8.646	8.795	7.984	7.732	7.750	7.875
60	to	Number of	7990.009	7425.750	7668.811	8627.736	10879.74	12480.63	12944.89	14235.54	15135.64	15870.07
64		case					2	5	9	8	2	3
		Incidence rate	9.813	8.383	8.238	8.364	8.564	8.459	8.037	7.569	7.352	7.436
65	to	Number of	5969.923	5862.910	5950.410	6609.143	7615.237	9621.721	10444.38	11102.04	12303.79	13246.12
69		case							2	3	5	2
		Incidence rate	9.741	8.226	7.823	8.006	8.194	8.339	7.832	7.622	7.196	7.054
70	to	Number of	3829.816	4216.846	4455.106	4841.561	5507.340	6423.405	7632.672	8582.489	9217.500	10378.93
74		case										6
		Incidence rate	9.435	8.264	7.786	7.640	7.875	8.032	7.737	7.448	7.270	6.926
75	to	Number of	2359.592	2524.873	2875.081	3315.368	3721.248	4273.675	4849.384	5973.650	6797.841	7446.619
79		case										
		Incidence rate	9.294	8.317	7.984	7.736	7.613	7.772	7.615	7.493	7.233	7.126
80	to	Number of	1291.110	1313.530	1473.740	1857.830	2215.887	2523.601	2898.750	3420.983	4298.322	4995.568
84		case										
		Incidence rate	9.250	8.447	8.172	8.083	7.835	7.612	7.519	7.522	7.424	7.234

85 to 89	Number of case	512.322	591.475	628.510	768.025	1004.081	1213.769	1452.189	1718.872	2097.220	2724.816
	Incidence rate	9.431	8.835	8.568	8.524	8.437	8.031	7.696	7.669	7.697	7.668
90 to 94	Number of case	148.155	186.730	214.781	252.621	321.311	427.619	579.719	695.639	859.490	1097.782
	Incidence rate	10.550	9.676	9.469	9.464	9.464	9.159	8.693	8.369	8.370	8.480
95 plus	Number of case	34.072	44.464	55.435	72.101	91.808	116.352	163.891	224.721	295.271	397.523
	Incidence rate	12.059	10.909	10.518	10.536	10.543	10.336	10.047	9.555	9.229	9.312

---

**Supplementary Table 8. Number of IBD cases and incidence rate by age group and projections for the next 20 years**

Age group		1990-2019 year					2020-2039 year (BAPC model prediction)				
		1990-1994	1995-1999	2000-2004	2005-2009	2010-2014	2015-2019	2020-2024	2025-2029	2030-2034	2035-2039
0 to 4	Number of case	158.399	151.483	146.077	148.485	151.896	151.659	113.756	99.182	88.683	83.107
	Incidence rate	0.025	0.024	0.023	0.023	0.023	0.023	0.021	0.019	0.017	0.016
5 to 9	Number of case	1869.454	1943.191	1924.508	1925.255	1966.902	1966.040	2003.032	1942.308	1883.000	1846.505
	Incidence rate	0.311	0.314	0.318	0.315	0.312	0.303	0.297	0.291	0.287	0.288
10 to 14	Number of case	6094.419	6750.630	7265.340	7110.728	7007.489	6962.249	7161.952	7087.707	6919.225	6841.106
	Incidence rate	1.103	1.121	1.158	1.164	1.141	1.100	1.087	1.055	1.040	1.046
15 to 19	Number of case	14177.97	15669.23	17197.71	17971.62	17445.35	16894.21	17532.60	17621.78	17605.42	17448.29
	Incidence rate	2.732	2.887	2.881	2.868	2.861	2.755	2.763	2.681	2.626	2.628
20 to 24	Number of case	25229.95	26267.94	27633.09	29528.38	30864.89	29530.73	30881.65	30978.67	31388.45	31799.79
	Incidence rate	5.044	5.186	5.202	5.034	5.000	4.906	5.032	4.904	4.796	4.762

25 29	to	Number of	33908.15	34890.68	34558.81	36083.00	39025.33	40255.78	41629.84	41308.45	41666.09	42696.33
		case	3	2	7	4	8	9	8	0	4	3
		Incidence rate	7.301	7.044	6.858	6.831	6.717	6.585	6.908	6.772	6.633	6.559
30 34	to	Number of	37457.56	37853.97	38024.36	38559.44	40833.88	43604.59	47609.55	46930.30	46776.01	47637.23
		case	2	6	6	8	2	3	9	2	8	9
		Incidence rate	9.300	8.197	7.718	7.665	7.757	7.540	7.818	7.841	7.719	7.632
35 39	to	Number of	36208.73	36170.13	37069.70	38990.81	40076.35	41698.38	46213.43	48427.93	47934.68	48207.35
		case	8	8	8	3	2	6	7	6	8	6
		Incidence rate	9.883	9.079	8.078	7.964	8.014	7.968	7.983	8.021	8.076	8.019
40 44	to	Number of	32154.89	32243.59	33050.95	36311.84	38600.88	39085.40	41466.01	45028.00	47395.94	47332.61
		case	9	5	5	0	8	5	7	1	6	4
		Incidence rate	10.389	9.029	8.515	8.116	8.071	7.981	7.964	7.867	7.934	8.057
45 49	to	Number of	24974.09	27456.05	28779.30	31870.92	35389.06	37219.58	37573.72	39497.55	43090.97	45785.31
		case	2	6	6	0	5	1	8	0	2	2
		Incidence rate	10.141	9.213	8.363	8.494	8.148	7.988	7.735	7.709	7.642	7.773
50 54	to	Number of	21043.59	20630.39	24006.92	27320.09	30515.79	33701.74	34370.85	35072.19	37036.95	40806.89
		case	8	3	6	3	0	5	6	9	8	9
		Incidence rate	9.753	8.870	8.448	8.291	8.447	8.022	7.506	7.395	7.395	7.394

55	to	Number of	17770.99	17279.35	17959.89	22570.23	25907.02	28825.49	30349.86	31572.91	32354.51	34501.59
59		case	9	7	3	8	7	9	0	4	9	8
		Incidence rate	9.300	8.533	8.160	8.318	8.194	8.292	7.463	7.137	7.055	7.117
60	to	Number of	15405.85	14365.07	14895.97	16687.42	21081.80	24168.05	25111.48	27159.90	28391.99	29380.34
64		case	7	0	1	0	9	1	7	8	9	9
		Incidence rate	9.296	8.078	7.826	7.958	8.108	7.973	7.572	7.027	6.741	6.722
65	to	Number of	12234.03	11878.63	11865.71	13180.19	14979.18	18933.14	20659.51	21902.24	23856.94	25215.77
69		case	4	6	4	6	2	6	9	4	9	3
		Incidence rate	9.346	8.091	7.446	7.635	7.779	7.873	7.378	7.149	6.653	6.438
70	to	Number of	8366.588	8995.202	9335.099	10031.86	11305.29	12933.61	15531.40	17438.20	18662.14	20614.65
74		case				5	0	8	7	6	8	6
		Incidence rate	9.158	8.237	7.522	7.322	7.512	7.612	7.324	7.005	6.811	6.390
75	to	Number of	5638.298	5753.607	6607.561	7347.425	8061.899	9119.010	10209.79	12600.13	14304.00	15576.47
79		case							1	8	0	0
		Incidence rate	9.176	8.316	7.842	7.537	7.307	7.406	7.240	7.081	6.794	6.663
80	to	Number of	3468.377	3433.625	3742.755	4606.045	5228.450	5776.346	6509.589	7518.461	9448.460	10923.98
84		case										8
		Incidence rate	9.316	8.552	8.046	7.960	7.599	7.254	7.138	7.089	6.956	6.732



85 to 89	Number of case	1567.505	1728.414	1801.244	2140.178	2700.441	3086.667	3486.054	4010.076	4768.729	6169.677
	Incidence rate	9.579	8.881	8.355	8.245	8.090	7.571	7.154	7.077	7.056	6.984
90 to 94	Number of case	525.410	614.453	706.959	802.695	996.588	1271.570	1523.585	1729.753	2058.237	2550.115
	Incidence rate	10.563	9.598	9.041	8.888	8.737	8.366	7.848	7.422	7.378	7.426
95 plus	Number of case	138.954	168.355	207.716	262.412	317.818	395.851	498.578	625.944	768.220	984.853
	Incidence rate	12.149	11.001	10.180	9.976	9.765	9.392	9.042	8.437	8.012	8.040

---

**Supplementary Table 9. Statistics and prediction of gender-specific IBD ASR based on Nordpred model**

<b>Year</b>	<b>ASR per 100000</b>	
	<b>Female</b>	<b>Male</b>
1990-1994	5.63	6.22
1995-1999	5.15	5.73
2000-2004	4.87	5.45
2005-2009	4.82	5.4
2010-2014	4.79	5.4
2015-2019	4.69	5.32
2020-2024	4.62	5.29
2025-2029	4.56	5.25
2030-2034	4.52	5.21
2035-2039	4.51	5.19

ASR, age standardized rate.

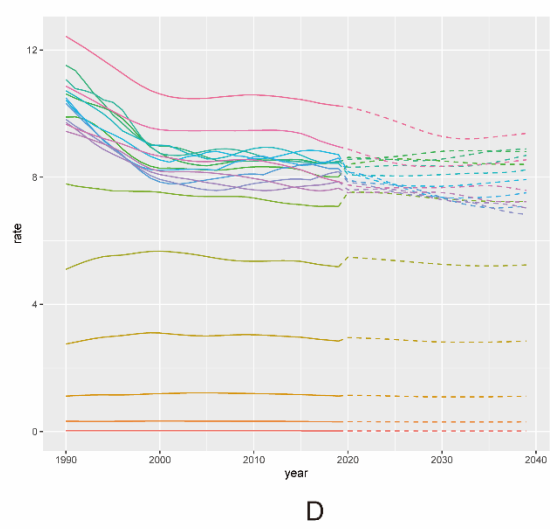
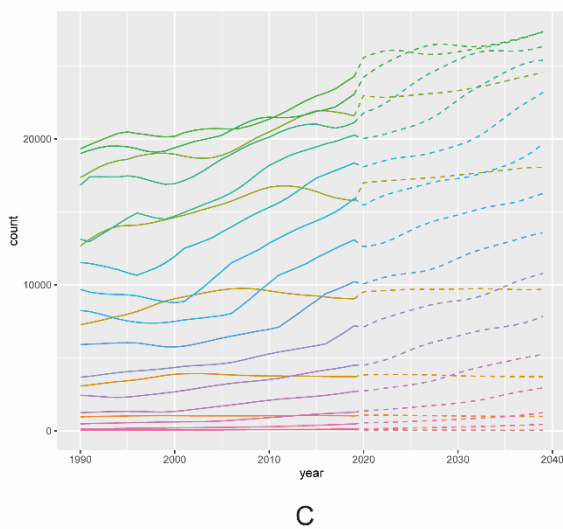
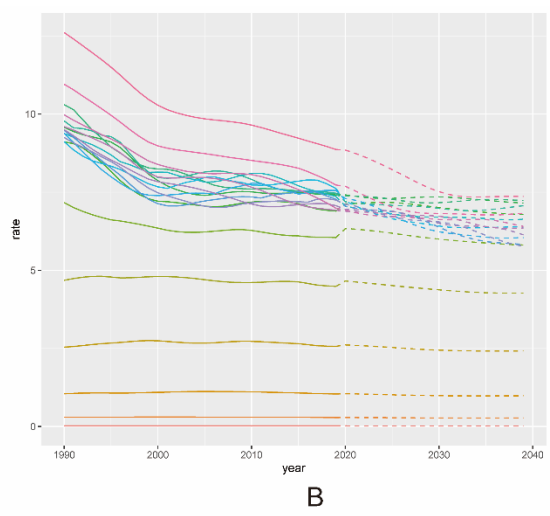
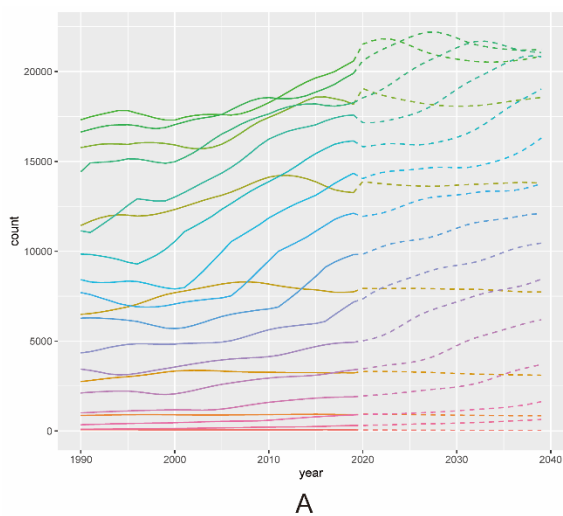
**Supplementary Table 10. Statistics and prediction of gender-specific IBD ASR based on BAPC model**

Year	ASR per 100000	
	Female (mean±sd)	Male (mean±sd)
1990	5.79983±1.52e-07	6.38098±1.64e-07
1991	5.71486±1.45e-07	6.30322±1.58e-07
1992	5.63004±1.42e-07	6.22444±1.54e-07
1993	5.54305±1.4e-07	6.14005±1.51e-07
1994	5.45368±1.37e-07	6.04929±1.48e-07
1995	5.36324±1.35e-07	5.9531±1.46e-07
1996	5.2627±1.32e-07	5.8449±1.43e-07
1997	5.15479±1.29e-07	5.73219±1.4e-07
1998	5.05259±1.26e-07	5.62791±1.37e-07
1999	4.96966±1.24e-07	5.54498±1.35e-07
2000	4.91812±1.22e-07	5.496±1.33e-07
2001	4.88901±1.21e-07	5.46876±1.31e-07
2002	4.86686±1.2e-07	5.44534±1.3e-07
2003	4.8492±1.18e-07	5.42558±1.29e-07
2004	4.83471±1.17e-07	5.40913±1.27e-07
2005	4.82287±1.16e-07	5.39715±1.26e-07
2006	4.81754±1.15e-07	5.39361±1.25e-07
2007	4.82104±1.14e-07	5.39984±1.24e-07
2008	4.82741±1.13e-07	5.41052±1.23e-07
2009	4.83041±1.12e-07	5.41874±1.22e-07
2010	4.82293±1.11e-07	5.41677±1.21e-07
2011	4.80744±1.1e-07	5.4084±1.2e-07
2012	4.79111±1.09e-07	5.40194±1.19e-07
2013	4.77407±1.08e-07	5.39509±1.18e-07
2014	4.75657±1.07e-07	5.3855±1.17e-07

2015	4.73881±1.06e-07	5.37101±1.16e-07
2016	4.71525±1.05e-07	5.33662±1.14e-07
2017	4.69321±1.04e-07	5.30741±1.13e-07
2018	4.67271±1.03e-07	5.30311±1.13e-07
2019	4.64568±1.05e-07	5.30471±1.13e-07
2020	4.62713±5.7e-07	5.32327±7.74e-07
2021	4.60125±8.01e-07	5.313±1.03e-06
2022	4.57645±1.09e-06	5.30341±1.37e-06
2023	4.55219±1.44e-06	5.29412±1.77e-06
2024	4.52784±1.81e-06	5.28462±2.22e-06
2025	4.5033±2.23e-06	5.27476±2.71e-06
2026	4.4794±2.67e-06	5.26517±3.23e-06
2027	4.45625±3.13e-06	5.25594±3.79e-06
2028	4.43352±3.61e-06	5.24684±4.37e-06
2029	4.41074±4.12e-06	5.23754±4.99e-06
2030	4.38781±4.64e-06	5.22793±5.63e-06
2031	4.36527±5.19e-06	5.2184±6.29e-06
2032	4.34323±5.75e-06	5.20904±6.98e-06
2033	4.32158±6.32e-06	5.19976±7.69e-06
2034	4.3±6.91e-06	5.19037±8.42e-06
2035	4.2784±7.51e-06	5.18083±9.18e-06
2036	4.25707±8.12e-06	5.17131±9.95e-06
2037	4.23614±8.75e-06	5.16188±1.07e-05
2038	4.21558±9.39e-06	5.15254±1.16e-05
2039	4.19518±1e-05	5.14319±1.24e-05

---

ASR, age standardized rate.



**Supplementary Figure 1 IBD incidence from 1990-2019 and projections for the next 20 years, stratified by gender.** A: Statistics and projections of the number of female patients with IBD are shown. B: Statistics and predictions of the female incidence of IBD are shown. C: Statistics and projections of the number of male patients with IBD are shown. D: Statistics and predictions of the male incidence of IBD are shown. Prediction of changes over the next 20 years are based on the BAPC model.