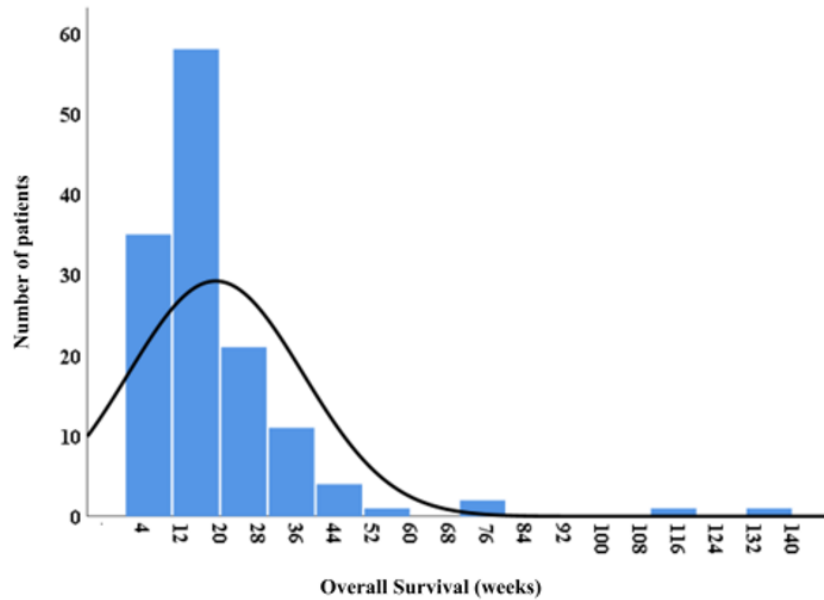
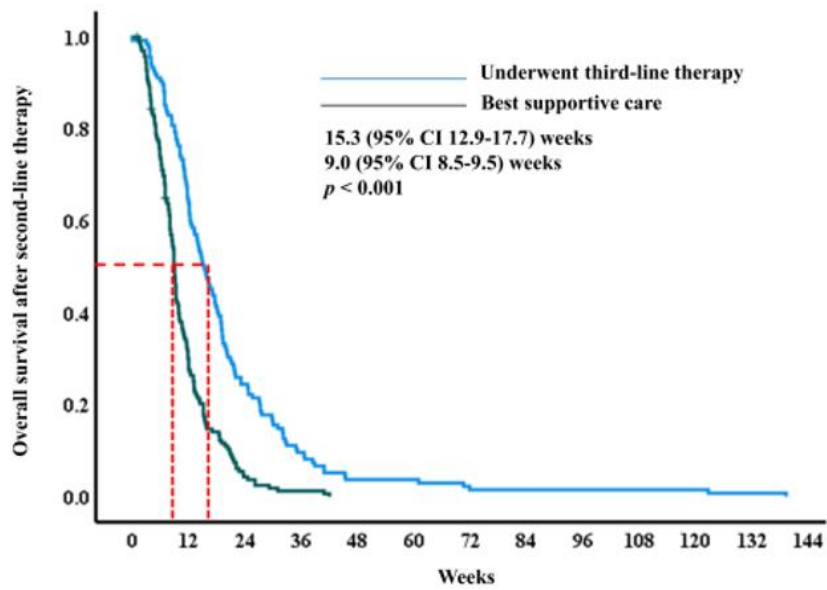


**Supplementary Figure 1 Flow of chemotherapy regimens used at each stage.** The Sankey diagram represents the treatment flow involving different chemotherapy regimens at each line 1 L, first-line chemotherapy; 2 L, second-line chemotherapy; 3 L, third-line chemotherapy; FOLFIRINOX, 5-fluorouracil/Leucovorin, irinotecan, and oxaliplatin; GNP, gemcitabine plus nab-paclitaxel; nal-IRI, nano-liposomal irinotecan, 5FU and leucovorin



**Supplementary Figure 2 Overall survival during third-line chemotherapy.** Of the patients, 31.2% survived longer than 5 months after third-line therapy.



**Supplementary Figure 3 Comparison of overall survival between best supportive care and third-line chemotherapy after second-line chemotherapy.** Compared with the group that received best supportive care, the group receiving third-line chemotherapy demonstrated a statistically significant increase in overall survival. CI, confidence interval

**Supplementary table 1 Baseline characteristics after propensity score match**

		<b>Third-line chemotherapy (<i>n</i> = 26)</b>	<b>Best supportive care (<i>n</i> = 26)</b>	<b><i>P</i> value</b>
Mean age		61.5 (51-86)	63.5 (34-78)	0.236
	(year, range)			
Gender	Male	12 (46.2)	17 (65.4)	0.163
Initial tumor location	Head/body/tail	10/6/10 (38.5/23.0/38.5)	12/6/8 (46.2/23.1/30.8)	0.817
Initial stages	Locally advanced/metastatic	4/22 (15.4/84.6)	10/16 (38.5/61.5)	0.061
Initial metastatic lesions	Liver/peritoneum/other	2/4/8(7.7/15.4/30.8)	4/8/3(15.4/30.8/11.5)	0.097

---

Median CA 19-9 before (U/mL) (SD)	First-/second-line CTx	3,698.4/2,615.6(8,820.4/6,006.5)	5,580.2/4,386.0(10,271.5/8,5145)	0.381/0.190
First-line regimen	FOLFIRINOX/GNP	21/5 (80.8/19.2)	21/5 (80.8/19.2)	> 0.999
Second- line regimen	FOLFIRINOX/GNP/TS- 1/nal-IRI plus 5FU and leucovorin/Other	5/15/0/0/6(19.2/57.7/0.0/0.0/23.1)	4/19/2/1/0.0 (15.4/73.1/7.7/3.8/0.0)	0.088
Median duration (week) (SD)	First/second-line CTx	28.8/15.8/(23.3/10.2)	22.3/10.3(19.9/11.6)	0.387/0.292

---

Duration of second-line CTx	< 19 weeks/≥19 weeks	19/7(73.1/26.9)	21/5(80.8/19.2)	0.510
PS after second-line CTx	Good/intermediate/poor	3/23/0 (11.5/88.5/0)	3/23/0 (11.5/88.5/0)	> 0.999

SD, standard deviation; CTx, chemotherapy; FOLFIRINOX, 5-fluorouracil/Leucovorin, irinotecan, and oxaliplatin; GNP, gemcitabine plus nab-paclitaxel; nal-IRI, nano-liposomal irinotecan; 5-FU, 5-fluorouracil; PS, performance status

**Supplementary table 2 Overall survival of third-line chemotherapy and best supportive care**

	<b>Third-line chemotherapy</b>	<b>Best supportive care</b>	<b>P value</b>
Median OS, weeks (95%CI)	10.4 (5.5-15.3)	9.3 (7.1-11.4)	0.731

CI, confidence interval; OS, overall survival.