

Supporting Table 1: The genotype and allele frequency distribution of rs4803455 and rs8193036 in Intestinal tuberculosis, Crohn's disease, and Health controls groups

(1) *TGFβ* rs4803455

a.

Genotype&Allele	HC	ITB	OR (95% CI)	<i>P</i>	OR (95% CI)*	<i>P</i> *
CC	184	49	1.00		1.00	
CA	247	67	1.02(0.67-1.54)	0.931	0.89(0.60-1.46)	0.824
AA	69	17	0.93(0.50-1.72)	0.805	0.87(0.42-1.65)	0.735
C	615	165	1.00		1.00	
A	385	101	0.98(0.74-1.29)	0.874	0.77(0.71-1.17)	0.658

b.

Genotype&Allele	HC	CD	OR (95% CI)	<i>P</i>	OR (95% CI)*	<i>P</i> *
CC	184	43	1.00		1.00	
CA	247	71	1.23(0.81-1.88)	0.339	1.15(0.72-1.76)	0.303
AA	69	14	0.89(0.45-1.69)	0.676	0.73(0.36-1.58)	0.624
C	615	157	1.00		1.00	
A	385	99	1.01(0.76-1.34)	0.960	1.16(0.68-1.27)	0.876

c.

Genotype&Allele	ITB	CD	OR (95% CI)	<i>P</i>	OR (95% CI)*	<i>P</i> *
CC	49	43	1.00		1.00	
CA	67	71	1.21(0.71-2.05)	0.484	1.18(0.69-1.89)	0.465
AA	17	14	0.94(0.41-2.13)	0.879	0.91(0.39-2.11)	0.828
C	165	157	1.00		1.00	
A	101	99	1.03(0.72-1.47)	0.869	1.01(0.69-1.45)	0.867

(2) *IL17* rs8193036

a.

Genotype&Allele	HC	ITB	OR (95% CI)	<i>P</i>	OR (95% CI) ^a	<i>P</i> ^a
CC	258	68	1.00		1.00	
CT	208	54	0.99(0.66-1.47)	0.941	0.97(0.62-1.45)	0.923
TT	34	11	1.23(0.59-2.55)	0.582	1.21(0.56-2.51)	0.578
C	724	190	1.00		1.00	
T	276	76	1.05(0.78-1.42)	0.753	0.98(0.74-1.37)	0.712

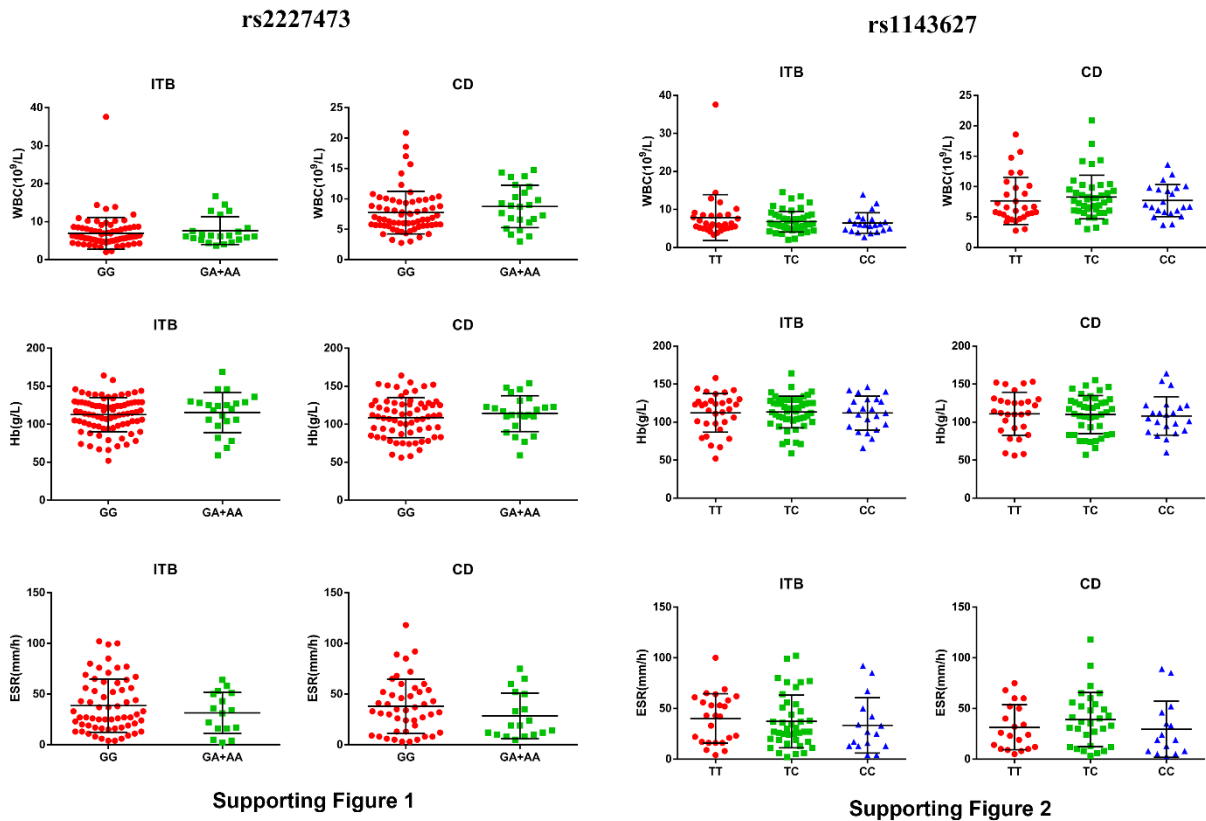
b.

Genotype&Allele	HC	CD	OR (95% CI)	<i>P</i>	OR (95% CI) ^a	<i>P</i> ^a
CC	258	72	1.00		1.00	
CT	208	47	0.81(0.54-1.22)	0.313	0.76(0.51-1.10)	0.297
TT	34	9	0.95(0.44-2.07)	0.894	0.89(0.36-1.94)	0.815
C	724	191	1.00		1.00	
T	276	65	0.89(0.65-1.22)	0.478	0.81(0.52-1.17)	0.429

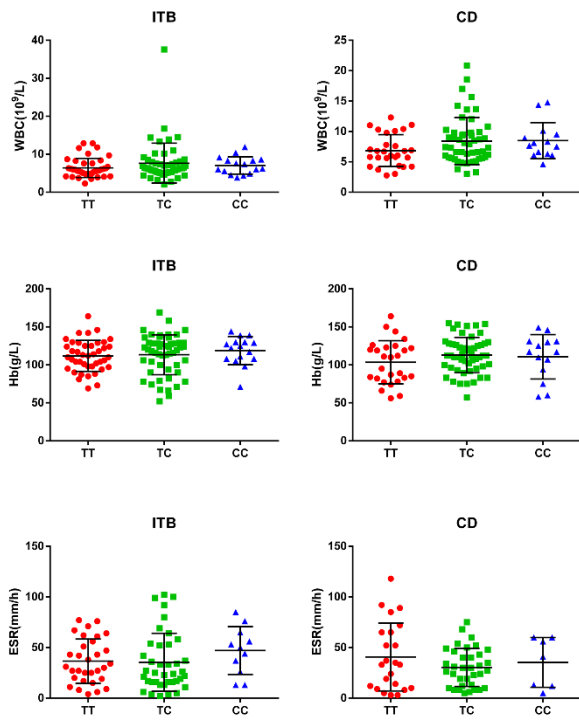
c.

Genotype&Allele	ITB	CD	OR (95% CI)	<i>P</i>	OR (95% CI) ^a	<i>P</i> ^a
CC	68	72	1.00		1.00	
CT	54	47	0.82(0.49-1.37)	0.454	0.79(0.46-1.35)	0.403
TT	11	9	0.77(0.30-1.98)	0.591	0.72(0.28-1.85)	0.573
C	190	191	1.00		1.00	
T	76	65	0.85(0.58-1.25)	0.413	0.81(0.55-1.22)	0.397

Supporting Figures:

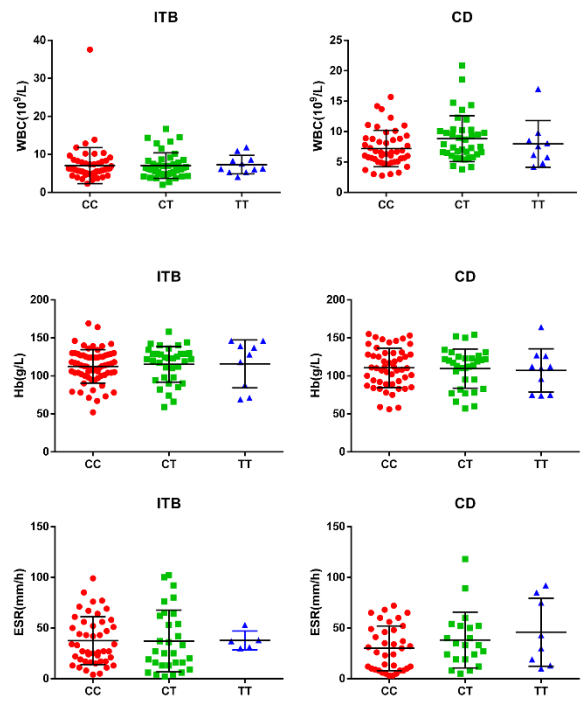


rs4803455



Supporting Figure 3

rs8193036



Supporting Figure 4