

Fig. S1. Effects of LB100 on the viability of L02 cells. A: Structure of LB100, used as the racemate. B: Cell viability was measured using the cholecystinin-8 (CCK-8) assay in L02 cells. Data are presented as the mean \pm S.D. ^kP<0.01 *vs* NC group. CCK-8: Cholecystinin-8; NC: Normal control.

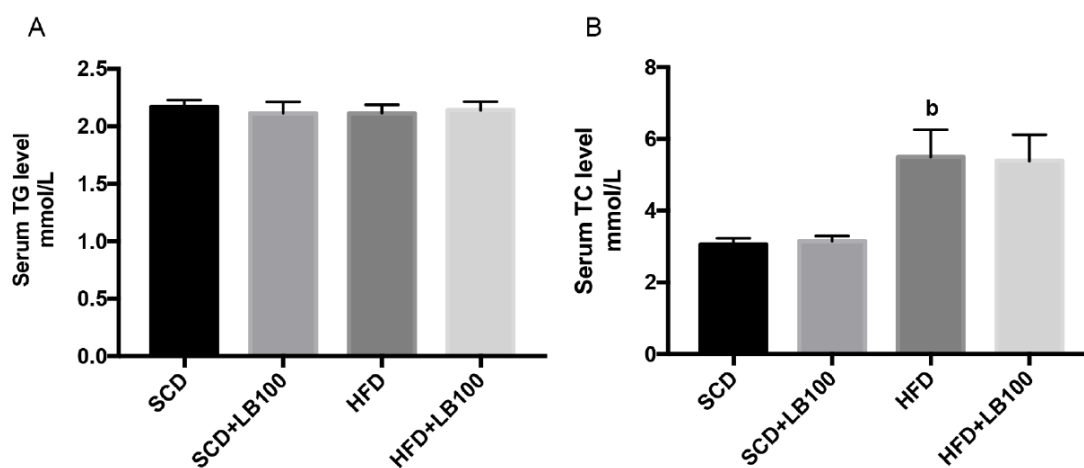


Fig. S2. Serum analysis of triglyceride and total cholesterol levels in the four groups of mice. A: Serum triglyceride (TG) level B: Serum total cholesterol (TC) level. Data are presented as the mean \pm S.D. ^aP<0.05, ^bP<0.01 *vs* SCD mice. TG: Triglyceride; TC: Total cholesterol.

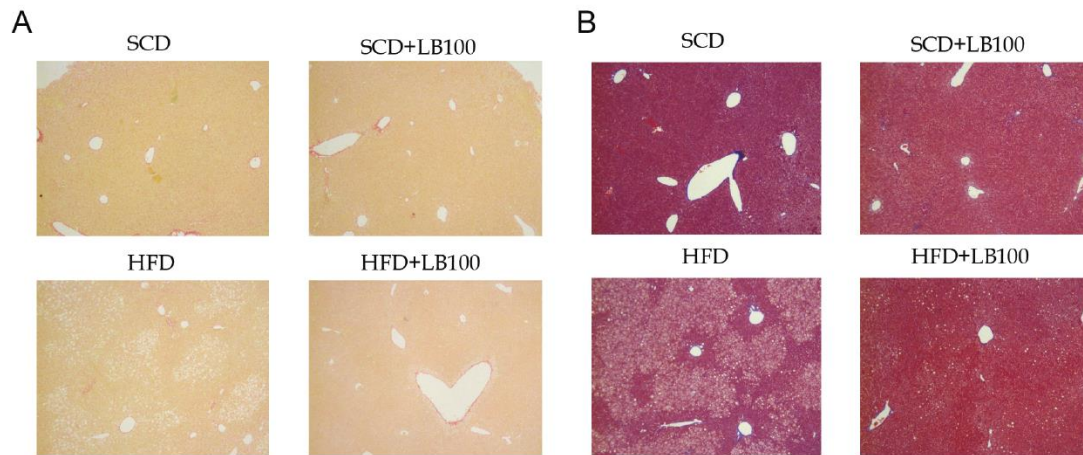


Fig. S3. Liver fibrosis was evaluated by staining of Masson's trichrome and Sirius red. A: Representative liver histological section images of the four groups of mice stained with Masson and B: Sirius red.

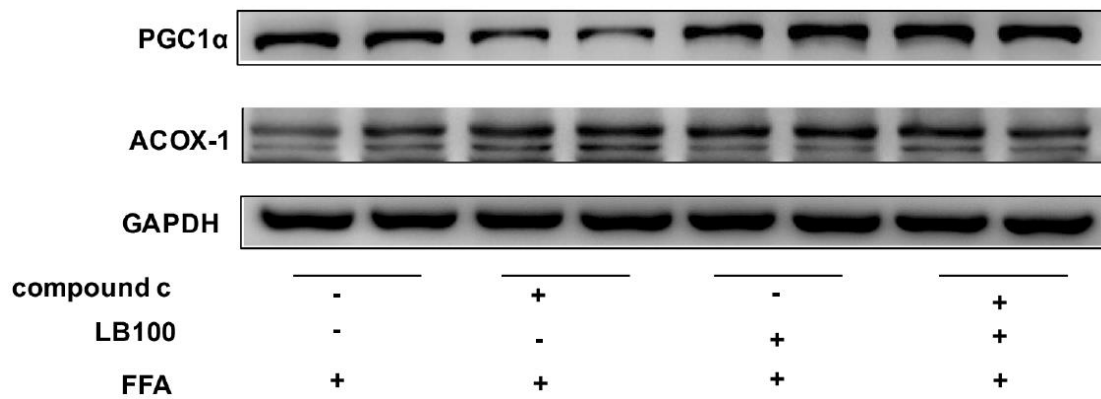


Fig. S4. There was no significant difference in the protein levels of peroxisome proliferator-activated receptor gamma coactivator-1 α and acyl-CoA oxidase 1. FFA: Free fatty acid.

Table S1. Primers used for quantitative real-time polymerase chain reaction analysis

Gene	Forward primer	Reverse primer
m-gapdh	TGGCCTTCCGTGTTCTAC	GAGTTGCTGTTGAAGTCGCA
h-gapdh	GGAGCGAGATCCCTCCAAA AT	GGCTGTTGTCATACTTCTCAT GG
m-FAS	GCGGGTTCGTGAAACTGATA A	GCAAAAATGGGCCTCCTTGAT A
h-FAS	TCTGGTTCTTACGTCTGTTGC	CTGTGCAGTCCCTAGCTTTCC
m-ACC1	ATGGGCGGAATGGTCTCTTT C	TGGGGACCTTGTCTTCATCAT
h-ACC1	ATGTCTGGCTTGCACCTAGT A	CCCCAAAGCGAGTAACAAAT TCT
m-SREBP1	CAAGGCCATCGACTACATC CG	CACCACTTCGGGTTTCATGC
h-SREBP1	CGGAACCATCTTGGCAACA GT	CGCTTCTCAATGGCGTTGT
m-SCD1	TTCTTGCGATACACTCTGGT GC	CGGGATTGAATGTTCTTGTCG T
h-SCD1	TTCCTACCTGCAAGTTCTAC ACC	CCGAGCTTTGTAAGAGCGGT

FAS: Fatty acid synthase; ACC: Acetyl-CoA carboxylase; SREBP1: Sterol regulatory element-binding protein 1; SCD1: Stearoyl-CoA desaturase-1.