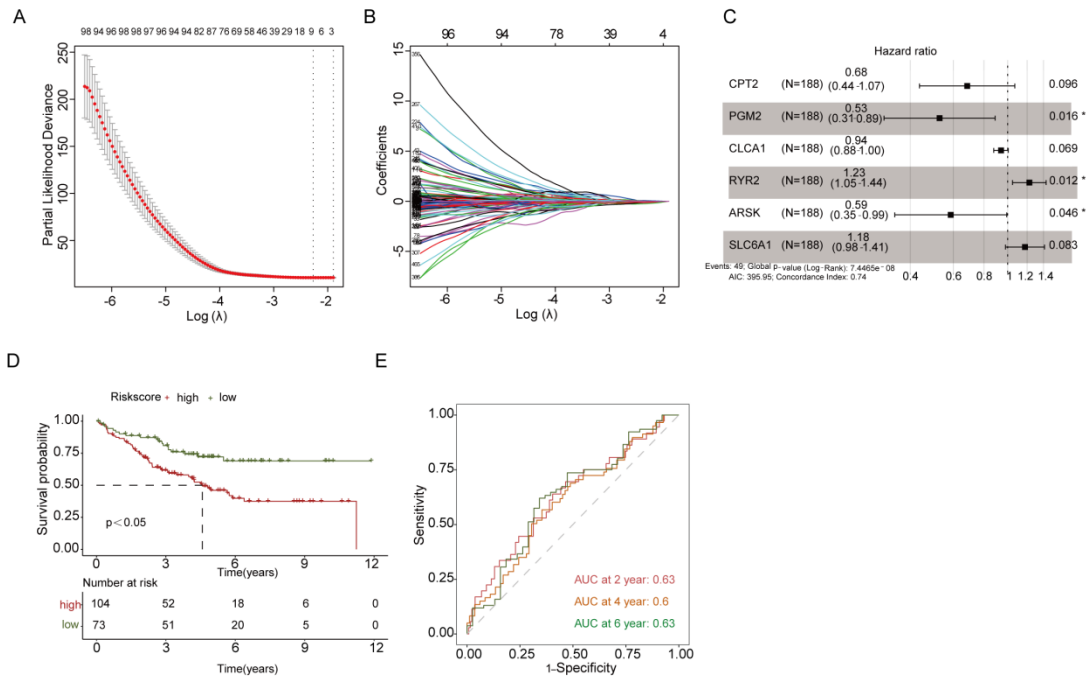
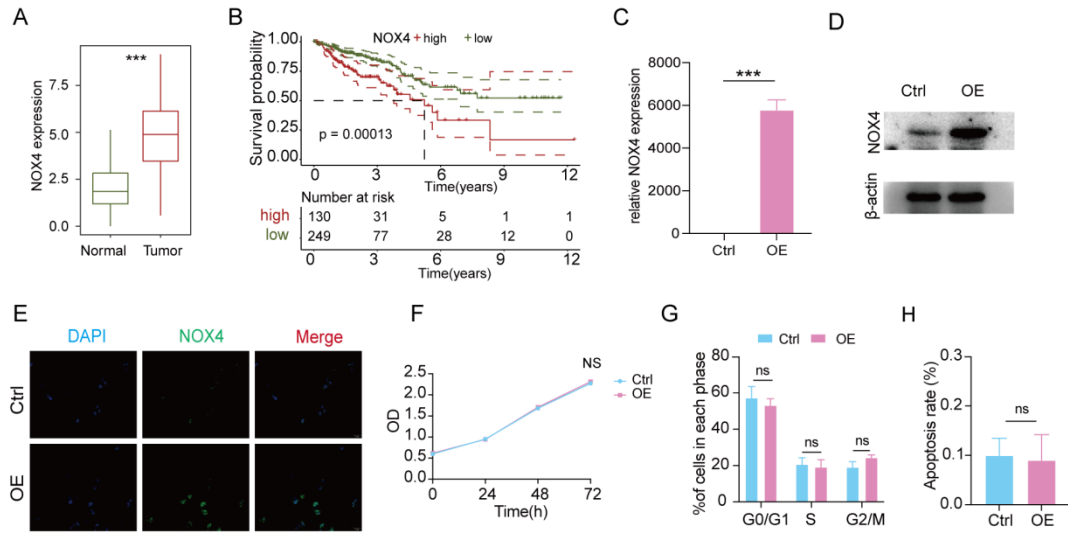


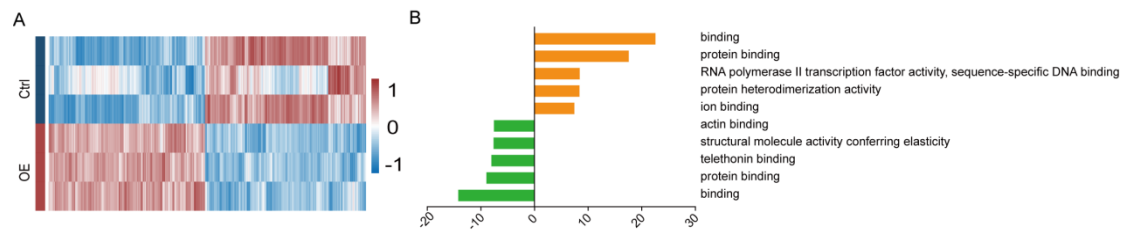
Supplementary Figure 1 Comparison of clinical features between three clusters.



Supplementary Figure 2 Identification of gene signatures related to OS.



Supplementary Figure 3 NOX4 was overexpressed in tumor tissues and negatively correlated with survival



Supplementary Figure 4 RNA-sequencing analysis of RKO-OE and RKO-Ctrl cells.

Supplementary Table 1 Primers used to over-express NOX4

Gene	Forward	Reverse
NOX4	5'- GGACCTTTGTGCCTGTACTGTG - 3'	5'- GTGAGGGATGACTTATGACCGA - 3'

Supplementary Table 2 Primers used to detect genes

Gene	Forward	Reverse
NOX4	5'- CATTCAGTTCAACAAAGTCTTCACTGT- 3'	5'- TTTTCTCAGGCGTGCATGTG- 3'
GAPDH	5'-GCACCGTCAAGGCTGAGAAC-3'	5'- TGGTGAAGACGCCAGTGGA - 3'