

World Journal of *Gastrointestinal Endoscopy*

World J Gastrointest Endosc 2024 June 16; 16(6): 273-375



EDITORIAL

- 273 Endoscopic ultrasound-guided pancreatic fluid collection drainage: Where are we?
Singh AK, Manrai M, Kochhar R
- 282 Organ and function preservation in gastrointestinal cancer: Current and future perspectives on endoscopic ablation
Soliman YY, Soliman M, Reddy S, Lin J, Kachaamy T
- 292 Impact of glucagon-like peptide receptor agonists on endoscopy and its preoperative management: Guidelines, challenges, and future directions
Singh S, Suresh Kumar VC, Aswath G

MINIREVIEWS

- 297 Still elusive: Developments in the accurate diagnosis of indeterminate biliary strictures
Affarah L, Berry P, Kotha S
- 305 Surgical strategies for challenging common bile duct stones in the endoscopic era: A comprehensive review of current evidence
Suwatthanarak T, Chinswangwatanakul V, Methasate A, Phalanusitthepha C, Tanabe M, Akita K, Akaraviputh T

ORIGINAL ARTICLE

Retrospective Study

- 318 Analysis of quality of life in patients after transgastric natural orifice transluminal endoscopic gallbladder-preserving surgery
Zhang MY, Zheng SY, Ru ZY, Zhang ZQ
- 326 Long-term outcomes of endoscopic submucosal dissection for undifferentiated type early gastric cancer over 2 cm with R0 resection
Bae JY, Ryu CB, Lee MS, Dua KS
- 335 Long-term impact of artificial intelligence on colorectal adenoma detection in high-risk colonoscopy
Chow KW, Bell MT, Cumpian N, Amour M, Hsu RH, Eysselein VE, Srivastava N, Fleischman MW, Reicher S

Observational Study

- 343 Balloon dilation of congenital perforated duodenal web in newborns: Evaluation of short and long-term results
Marakhouski K, Malyshka E, Nikalayeva K, Valiok L, Pataleta A, Sanfirau K, Svirsky A, Averin V

Clinical and Translational Research

- 350** Impact of index admission cholecystectomy *vs* interval cholecystectomy on readmission rate in acute cholangitis: National Readmission Database survey
Sohail A, Shehadah A, Chaudhary A, Naseem K, Iqbal A, Khan A, Singh S

CASE REPORT

- 361** Pleomorphic leiomyosarcoma of the maxilla with metastasis to the colon: A case report
Alnajjar A, Alfadda A, Alqaraawi AM, Alajlan B, Atallah JP, AlHussaini HF
- 368** Giant Brunner's gland hyperplasia of the duodenum successfully resected *en bloc* by endoscopic mucosal resection: A case report
Makazu M, Sasaki A, Ichita C, Sumida C, Nishino T, Nagayama M, Teshima S

Contents

World Journal of Gastrointestinal Endoscopy

Monthly Volume 16 Number 6 June 16, 2024

ABOUT COVER

Editorial Board Member of *World Journal of Gastrointestinal Endoscopy*, Mohammed Omar Elsayed, MD, FRCP (London), ESEGH, Professor, South Tees Hospitals NHS Foundation Trust, The James Cook University Hospital, Middlesbrough TS4 3BW, United Kingdom. mohammed.omar@nhs.net

AIMS AND SCOPE

The primary aim of *World Journal of Gastrointestinal Endoscopy* (WJGE, *World J Gastrointest Endosc*) is to provide scholars and readers from various fields of gastrointestinal endoscopy with a platform to publish high-quality basic and clinical research articles and communicate their research findings online.

WJGE mainly publishes articles reporting research results and findings obtained in the field of gastrointestinal endoscopy and covering a wide range of topics including capsule endoscopy, colonoscopy, double-balloon enteroscopy, duodenoscopy, endoscopic retrograde cholangiopancreatography, endosonography, esophagoscopy, gastrointestinal endoscopy, gastroscopy, laparoscopy, natural orifice endoscopic surgery, proctoscopy, and sigmoidoscopy.

INDEXING/ABSTRACTING

The WJGE is now abstracted and indexed in Emerging Sources Citation Index (Web of Science), PubMed, PubMed Central, Reference Citation Analysis, China Science and Technology Journal Database, and Superstar Journals Database. The 2023 Edition of Journal Citation Reports® cites the 2022 impact factor (IF) for WJGE as 2.0; IF without journal self cites: 1.9; 5-year IF: 3.3; Journal Citation Indicator: 0.28.

RESPONSIBLE EDITORS FOR THIS ISSUE

Production Editor: *Yi-Xuan Cai*; Production Department Director: *Xu Guo*; Cover Editor: *Jia-Ping Yan*.

NAME OF JOURNAL

World Journal of Gastrointestinal Endoscopy

ISSN

ISSN 1948-5190 (online)

LAUNCH DATE

October 15, 2009

FREQUENCY

Monthly

EDITORS-IN-CHIEF

Anastasios Koulaouzidis, Bing Hu, Sang Chul Lee, JooYoung Cho

EDITORIAL BOARD MEMBERS

<https://www.wjgnet.com/1948-5190/editorialboard.htm>

PUBLICATION DATE

June 16, 2024

COPYRIGHT

© 2024 Baishideng Publishing Group Inc

PUBLISHING PARTNER

Digestive Endoscopy Center of West China Hospital, SCU

INSTRUCTIONS TO AUTHORS

<https://www.wjgnet.com/bpg/gerinfo/204>

GUIDELINES FOR ETHICS DOCUMENTS

<https://www.wjgnet.com/bpg/GerInfo/287>

GUIDELINES FOR NON-NATIVE SPEAKERS OF ENGLISH

<https://www.wjgnet.com/bpg/gerinfo/240>

PUBLICATION ETHICS

<https://www.wjgnet.com/bpg/GerInfo/288>

PUBLICATION MISCONDUCT

<https://www.wjgnet.com/bpg/gerinfo/208>

ARTICLE PROCESSING CHARGE

<https://www.wjgnet.com/bpg/gerinfo/242>

STEPS FOR SUBMITTING MANUSCRIPTS

<https://www.wjgnet.com/bpg/GerInfo/239>

ONLINE SUBMISSION

<https://www.f6publishing.com>

PUBLISHING PARTNER's OFFICIAL WEBSITE

<http://www.cd120.com/index.html>

© 2024 Baishideng Publishing Group Inc. All rights reserved. 7041 Koll Center Parkway, Suite 160, Pleasanton, CA 94566, USA

E-mail: office@baishideng.com <https://www.wjgnet.com>



Clinical and Translational Research

Impact of index admission cholecystectomy vs interval cholecystectomy on readmission rate in acute cholangitis: National Readmission Database survey

Abdullah Sohail, Ahmed Shehadah, Ammad Chaudhary, Khadija Naseem, Amna Iqbal, Ahmad Khan, Shailendra Singh

Specialty type: Gastroenterology and hepatology

Provenance and peer review: Unsolicited article; Externally peer reviewed.

Peer-review model: Single blind

Peer-review report's classification

Scientific Quality: Grade A, Grade C

Novelty: Grade A, Grade C

Creativity or Innovation: Grade B, Grade C

Scientific Significance: Grade B, Grade C

P-Reviewer: Feng Y, China

Received: February 25, 2024

Revised: April 25, 2024

Accepted: May 10, 2024

Published online: June 16, 2024



Abdullah Sohail, Department of Internal Medicine, University of Iowa Roy J and Lucille A Carver College of Medicine, Iowa, IA 52242, United States

Ahmed Shehadah, Department of Internal Medicine, Rochester General Hospital, Rochester, NY 14621, United States

Ammad Chaudhary, Department of Internal Medicine, Henry Ford Hospital, Detroit, MI 48202, United States

Khadija Naseem, Department of Internal Medicine, Cleveland Clinic Foundation, Cleveland, OH 44195-0001, United States

Amna Iqbal, Department of Internal Medicine, University of Toledo, Toledo, OH 43606, United States

Ahmad Khan, Department of Gastroenterology and Hepatology, Case Western Reserve University Hospital, Cleveland, OH 44106, United States

Shailendra Singh, Division of Gastroenterology and Hepatology, West Virginia University School of Medicine, Morgantown, WV 26505, United States

Corresponding author: Abdullah Sohail, MD, Assistant Professor, Department of Internal Medicine, University of Iowa Roy J and Lucille A Carver College of Medicine, 200 Hawkins Dr, Iowa, IA 52242, United States. abdullahsohailmd@gmail.com

Abstract

BACKGROUND

Elective cholecystectomy (CCY) is recommended for patients with gallstone-related acute cholangitis (AC) following endoscopic decompression to prevent recurrent biliary events. However, the optimal timing and implications of CCY remain unclear.

AIM

To examine the impact of same-admission CCY compared to interval CCY on patients with gallstone-related AC using the National Readmission Database

(NRD).

METHODS

We queried the NRD to identify all gallstone-related AC hospitalizations in adult patients with and without the same admission CCY between 2016 and 2020. Our primary outcome was all-cause 30-d readmission rates, and secondary outcomes included in-hospital mortality, length of stay (LOS), and hospitalization cost.

RESULTS

Among the 124964 gallstone-related AC hospitalizations, only 14.67% underwent the same admission CCY. The all-cause 30-d readmissions in the same admission CCY group were almost half that of the non-CCY group (5.56% *vs* 11.50%). Patients in the same admission CCY group had a longer mean LOS and higher hospitalization costs attributable to surgery. Although the most common reason for readmission was sepsis in both groups, the second most common reason was AC in the interval CCY group.

CONCLUSION

Our study suggests that patients with gallstone-related AC who do not undergo the same admission CCY have twice the risk of readmission compared to those who undergo CCY during the same admission. These readmissions can potentially be prevented by performing same-admission CCY in appropriate patients, which may reduce subsequent hospitalization costs secondary to readmissions.

Key Words: Acute cholangitis; Gallstone-related complications; National Readmission Database; 30-d readmission rates; Resource utilization; In-hospital mortality

©The Author(s) 2024. Published by Baishideng Publishing Group Inc. All rights reserved.

Core Tip: Utilizing the National Readmission Database, we examined the outcomes of index admission cholecystectomy (CCY) *vs* interval CCY in patients with gallstone-related acute cholangitis (AC). This study revealed that patients undergoing CCY during the same hospital admission for AC exhibited significantly lower 30-d readmission rates than those receiving interval CCY. This approach not only reduces the frequency of subsequent acute hospital visits but also highlights the potential cost benefits by lowering hospitalization expenses. These findings advocate for a reevaluation of current clinical practices concerning the timing of CCY post- endoscopic retrograde cholangiopancreatography, suggesting that earlier interventions could enhance patient outcomes and optimize resource utilization.

Citation: Sohail A, Shehadah A, Chaudhary A, Naseem K, Iqbal A, Khan A, Singh S. Impact of index admission cholecystectomy *vs* interval cholecystectomy on readmission rate in acute cholangitis: National Readmission Database survey. *World J Gastrointest Endosc* 2024; 16(6): 350-360

URL: <https://www.wjgnet.com/1948-5190/full/v16/i6/350.htm>

DOI: <https://dx.doi.org/10.4253/wjge.v16.i6.350>

INTRODUCTION

Gallstone-related acute cholangitis (AC) is a common gastrointestinal emergency that requires prompt recognition and treatment to prevent multi-organ failure and irreversible shock. The most common etiology of AC is biliary obstruction secondary to gallstones, accounting for up to 70% of the cases[1]. The majority of these patients require endoscopic retrograde cholangiopancreatography (ERCP) for biliary decompression. The estimated mortality rate following an acute episode of AC ranges from 5%-10%, with higher rates observed in patients who require emergent ERCP[2]. Despite successful decompression of the biliary tract after an ERCP, there is a risk of recurrent biliary events due to the presence or formation of stones in the gallbladder, which can lead to recurrent cholangitis, rehospitalizations, and increased mortality[1,3,4]. Therefore, elective cholecystectomy (CCY) is recommended in these patients after an ERCP, but there is a lack of consensus about the optimal timings of CCY[3,4].

The 2007 Tokyo guidelines recommend elective CCY after successful biliary decompression in stable patients with AC (Grade B recommendation)[5]. However, no updates were made in the 2013 or 2018 guidelines to address the timing of the elective CCY and whether it needs to be performed during the same admission or interval admission[1,6]. Similarly, the European Society of Gastrointestinal Endoscopy 2019 guidelines also endorse the Tokyo 2018 guidelines and do not provide any specific timeframe regarding CCY after AC[7]. However, the American Society of Gastrointestinal Endoscopy recommends that elective CCY be performed as soon as possible after the resolution of AC, but the timing should be individualized based on the patient's condition and other factors. Therefore, the time to perform elective CCY in these patients remains highly discretionary to the performing surgeon and depends on perioperative risk assessment at the individual level[8]. Although studies have shown that early elective CCY during the same hospitalization after therapeutic ERCP in patients with AC can decrease the risk of recurrent biliary events by 15%-20%[9-11]. It is estimated

that the same admission elective CCY following an ERCP is performed only in 28.6% to 37.2% of patients who present with choledocholithiasis[12,13]. Hence, there remains a lack of consensus on the optimal timing of CCY after ERCP in patients with an acute episode of gallstone-related AC. Therefore, we aimed to examine the impact of the same admission CCY after an ERCP on readmission rate, mortality, and resource utilization in patients with gallstone-related AC at a national level.

MATERIALS AND METHODS

Data source

In this study, we utilized the National Readmission Database (NRD), which is a part of the Healthcare Cost and Utilization Project (HCUP), as our data source. The NRD is the largest publicly available readmission database in the United States, covering approximately 32 million hospital discharges across geographically dispersed 31 states[14]. It provides clinical and demographic data, including patient and hospital-level information related to index hospitalization and readmissions. The patient-level data includes demographics such as gender, age, median income by zip quartile, primary and secondary diagnoses at discharge, procedures performed during the hospitalization, length of stay (LOS), and total hospitalization charges, and the hospital-level data includes information about ownership, teaching status, hospital size based on the number of beds, and rural/urban location. The NRD allocates a specific identification number to each patient, which is used to identify all admissions (index or readmissions) for that patient in a calendar year. The discharge diagnoses and procedure codes are identified using the International Classification of Diseases, Tenth Revision, Clinical Modification (ICD10-CM), and Procedure Coding System (PCS). The study is considered exempt from the institutional review board, as the data source is from the NRD, a publicly available de-identified database.

Study population

We identified all patients hospitalized for gallstone-related AC in the NRD between 2016 and 2020. We grouped them into two cohorts based on whether they underwent the same admission CCY or interval CCY following biliary decompression with an ERCP. Patients who did not undergo index hospitalization for CCY after AC were assumed to have later undergone CCY. The ICD-10 and PCS codes used to select patients are provided in the [Supplementary Table 1](#). Patients under 18 years of age and those admitted on an elective basis were excluded from the study. All the index hospitalizations in December were also excluded to accurately calculate the 30-d readmission rate as NRD keeps a calendar year hospitalization record from January 1 to December 31 without crossing over to the previous or the following year.

Study outcomes

The primary outcome of our study was the all-cause 30-d readmission rate for patients admitted with gallstone-related AC and the most common reasons leading to these readmissions. Readmission was defined as any non-traumatic admission within 30 d of the index admission, and only the first readmission was considered for patients with multiple readmissions. We excluded patients who died during index hospitalization to calculate readmission outcomes accurately. Our secondary outcomes were all-cause mortality for the index hospitalization and readmissions, along with the mean LOS and hospitalization costs associated with the index hospitalization and subsequent readmissions.

Patient and hospital characteristics

The database itself has patient-related variables such as age, gender, median household income based on zip code, primary insurance payer (including Medicare, Medicaid, private insurance, self-pay, and uninsured status) as well as hospital characteristics such as size based on the number of beds (large, medium, and small), urban *vs* rural location, and teaching status. To assess the burden of comorbidities in both groups, including hypertension, diabetes mellitus, chronic kidney disease, end-stage renal disease (ESRD), chronic obstructive pulmonary disease (COPD), and congestive heart failure (CHF), we utilized the variables present in the Deyo's modification of Charlson Comorbidity Index (CCI)[15]. The NRD provides information about the total hospitalization charges that hospitals bill for each hospitalization. However, the total hospitalization cost reimbursed by the primary payer is calculated using the cost-to-charge ratio files provided by the HCUP[16].

Statistical analysis

We used STATA (version 16.0; StataCorp, College Station, TX, United States) for statistical analysis, which allows statistical operations involving complex survey-based studies aligned with the NRD design, including stratification, clustering, and weighing. We dealt with the missing values by pairwise deletion. Baseline demographics were compared using the χ^2 test for categorical variables and Student's *t*-test for continuous variables. We set the threshold for statistical significance at a *P* value of 0.05. Survival analysis was performed with the time from discharge to readmission as a time variable and death as a failure. Patients were censored on the 30th d of discharge if they were alive. Univariate Cox regression analysis was used to calculate the unadjusted hazard ratio (HR) for the predictors of readmissions. A multivariate Cox regression model was built to adjust for potential confounding factors with a cutoff *P* value of less than 0.2 on univariate analysis.

RESULTS

Baseline characteristics

In this study, 142855 hospitalizations were initially identified in patients with gallstone-related AC between 2016 and 2020. After applying the study criteria, 124964 patients were included in the analysis (Figure 1). Table 1 presents the baseline characteristics of the patients and hospitals for index hospitalization and 30-d readmission. Only 18332 (14.67%) of the included patients underwent the same admission CCY following an ERCP. Patients who received the same admission CCY were younger, with a mean age of 66.89 years, compared to those who received interval-CCY (mean age 69.89 years, $P < 0.01$), and had a higher proportion of male patients (52.94% *vs* 51.52%, $P < 0.01$). Patients who underwent interval-CCY had a higher CCI score of > 3 (45.85% *vs* 27.10%, $P < 0.01$) than those in the same admission CCY group. Patients in the interval-CCY group also had a higher prevalence of individual comorbidities, such as COPD (18.2% *vs* 17.83%, $P < 0.01$), ESRD (2.2% *vs* 1.6%, $P < 0.01$), and CHF (16.97% *vs* 13.33%, $P < 0.1$), than those who received the same admission CCY. Medicare was the primary insurer in both the same admission CCY and interval-CCY groups (64.54% *vs* 61.12%, respectively), followed by private insurance (22.74% *vs* 19.99%, respectively). More than two-thirds of the patients who received the same admission CCY were admitted to the teaching hospitals (77.36%) (Table 1).

30-d all-cause readmission rate and its predictors

The 30-d all-cause readmission rate was lower in the same-admission CCY group (5.56%, $n = 1019$) compared to the interval-CCY group (11.50%, $n = 12265$). Figure 2 shows the Kaplan-Meier survival curves for both the same-admission CCY and interval-CCY groups. Although sepsis was the most common cause of readmission in both groups, cholangitis was the second common cause in the interval-CCY group (Table 2). In multivariate analysis, the independent predictors for readmission were CCI > 3 [adjusted HR = 1.75; 95% confidence interval (CI): 1.04-2.94; $P < 0.01$], ESRD (HR = 2.18; 95%CI: 1.25-3.81; $P < 0.01$), and CHF (HR = 1.87; 95%CI: 1.31-2.66; $P < 0.01$) in the same admission CCY group (Table 3). In the interval-CCY group, the independent predictors of readmission were CCI > 3 (HR = 1.27; 95%CI: 1.22-1.32; $P < 0.01$), ESRD (HR = 1.41; 95%CI: 1.15-1.73; $P < 0.01$), and hospital bed size (HR = 1.12; 95%CI: 1.01-1.26; $P < 0.01$) (Table 4).

Mortality and resource utilization

During the index admissions, inpatient mortality was lower in the same admission-CCY group (1.18% *vs* 3.17%, $P < 0.01$) compared to the interval-CCY group, as well as during readmissions (2.53% *vs* 4.52%, $P < 0.01$). Although the same admission CCY group had longer lengths of stay during index admission (mean LOS 7.4 d *vs* 6.5 d, $P < 0.01$), they had shorter lengths of stay during readmission (mean LOS 5.3 d *vs* 5.7 d, $P < 0.01$). In addition, the same admission CCY group had a lower proportion of patients who developed acute respiratory failure (1.86% *vs* 2.14%, $P < 0.01$), septic shock (0.9% in CCY *vs* 1.39% in non-CCY, $P < 0.01$) and required less intensive care utilization (4.51% *vs* 7%, $P < 0.01$) as compared to the interval-CCY group. In terms of hospitalization costs, the overall cost was higher in the same admission CCY group for the index admission (\$29522 *vs* \$24014, $P < 0.01$). However, for readmissions, the interval-CCY group had higher costs (\$17672 *vs* \$14166, $P < 0.01$), as shown in Table 5.

DISCUSSION

In this study, we examined practice trends at the national level for performing CCY after ERCP following an episode of gallstone-related AC. We found that patients with gallstone-related AC who did not undergo the same admission CCY had a higher risk of a 30-d readmission rate as compared to the patients who underwent CCY during the same hospitalization. Sepsis was the most common cause of readmissions in both groups, and AC was the second most common cause of readmissions in the non-CCY group. In comparison to all-cause inpatient mortality, patients in the interval-CCY group had a higher mortality rate during the index hospitalization and rehospitalizations, most likely related to the increased comorbidity burden in these patients. Regarding resource utilization, the findings suggest that inpatient LOS and hospitalization costs were higher in the same admission CCY group, which is attributable to the surgery performed during the index hospitalization. However, this additional surgical procedure appeared to prevent half of the readmissions, which would have resulted in high hospitalization costs and mortality. This suggests that, although the initial hospitalization cost may be higher for the same admission CCY group, the cost savings associated with reduced readmissions may ultimately make this approach more cost-effective and improve patient outcomes.

Several studies have investigated the appropriate timing for CCY following gallstone-related biliary events, such as acute cholecystitis and choledocholithiasis, concluding that early CCY helps prevent recurrent biliary events. A retrospective analysis of a large database conducted in 2017, which included over 4500 hospitalized patients with choledocholithiasis, demonstrated that patients who underwent delayed CCY had a tenfold greater risk of recurrent biliary events than those who underwent early CCY. The study also showed that early CCY after acute cholecystitis might shorten the hospital stay post-surgery[9,10]. In comparison, other studies have reported that delayed or interval CCY is linked to an increased likelihood of recurring biliary events[14]. For instance, Schiphorst *et al*[9] reported the recurrence rate of biliary symptoms of 20% as early as 22 d in patients who awaited planned CCY.

There is still no concrete evidence on the optimal timing for performing the procedure in patients diagnosed with AC related to gallstones[13]. Severance *et al*[17] conducted a retrospective review of 127 patients with gallstone-related AC to determine the role of early CCY (within 72 h after ERCP) *vs* delayed CCY (72 h after ERCP) and found that patients who underwent delayed CCY had a higher rate of readmission (13.2 *vs* 8.3, $P = 0.4$); however, the results were not statistically different due to the small sample size[17]. In a recently published single-center retrospective study, patients with acute

Table 1 Baseline patient and hospital characteristics of patients admitted with gallstone-related acute cholangitis with same-admission and interval cholecystectomy

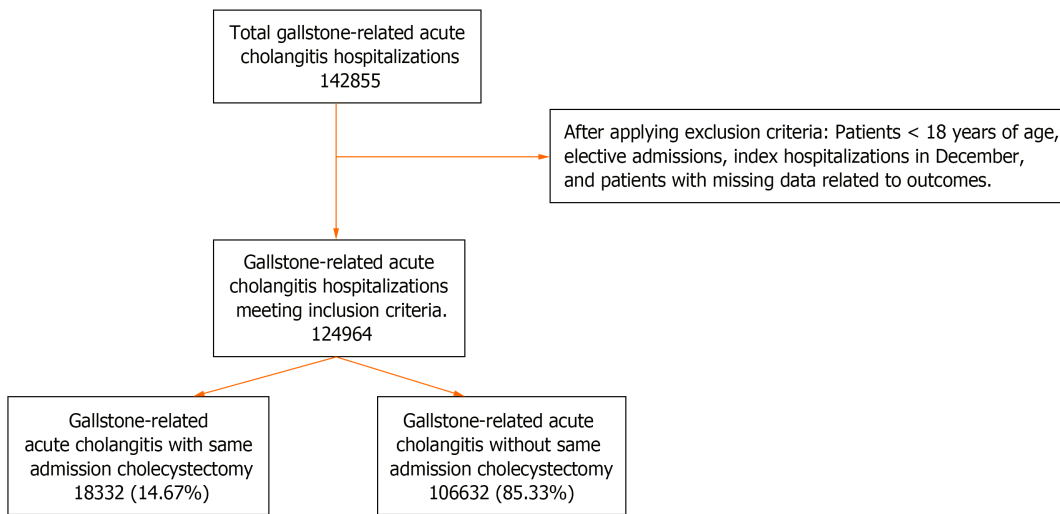
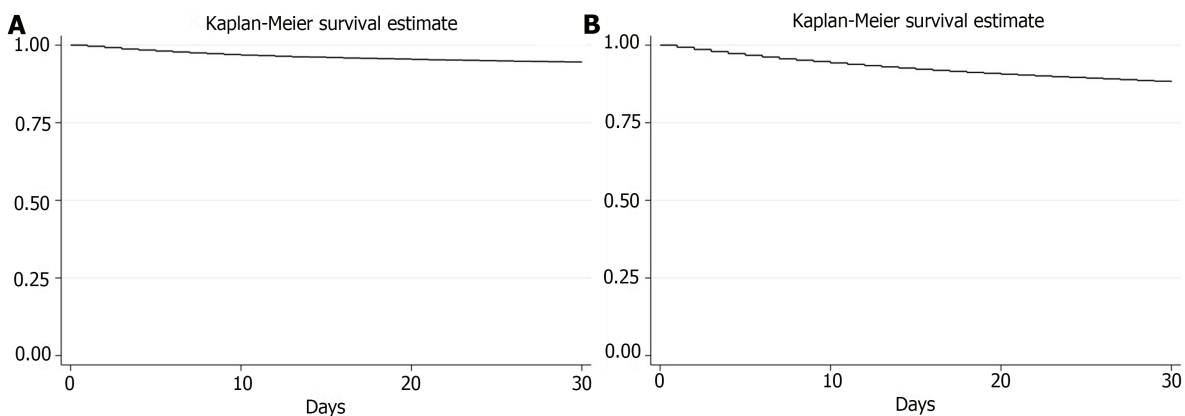
Patient characteristics	AC with same admission CCY			AC with interval CCY		
	Index admission	30-d readmission	P value	Index admission	30-d readmission	P value
No. of patients (<i>n</i>)	18332	1019		106632	12265	
Male, <i>n</i> (%)	9704 (52.94)	534 (52.37)	0.82	54937 (51.52)	6787 (55.34)	< 0.01
Mean age (yr)	66.9	68.28		69.89	69.08	
Charlson Comorbidity Index			< 0.01			< 0.01
0	6205 (33.85%)	268 (26.33%)		22862 (21.44%)	1748 (14.25%)	
1	3668 (20.01%)	124 (12.2%)		15003 (14.07%)	1326 (10.81%)	
2	3487 (19.02%)	165 (16.23%)		19866 (18.63%)	2177 (17.75%)	
3 or more	4968 (27.10%)	461 (45.22%)		48891 (45.85%)	7013 (57.18%)	
Median income based on Zip codes			0.89			0.03
\$1-\$38999	4498 (24.54%)	252 (24.75%)		24078 (22.58%)	2807 (22.89%)	
\$39000-\$47999	5316 (29%)	299 (29.38%)		29782 (27.93%)	3258 (26.56%)	
\$48000-\$62999	4810 (26.24%)	277 (27.22%)		27575 (25.86%)	3097 (25.25%)	
> \$ 63000	3703 (20.2%)	190 (18.64%)		25186 (23.62%)	3101 (25.28%)	
Primary payer, <i>n</i> (%)			0.05			0.12
Medicare	11831 (64.54)	727 (71.34)		73704 (69.12)	8372 (68.26)	
Medicaid	1727 (9.42)	88 (8.68)		9458 (8.87)	1208 (9.85)	
Private	4168 (22.74)	174 (17.03)		21316 (19.99)	2452 (19.99)	
Others	601 (3.28)	30 (2.94)		2133 (2)	231 (1.88)	
Comorbid conditions						
Hypertension	7272 (39.67%)	461 (45.23%)	< 0.01	41640 (39.05%)	4706 (38.37%)	0.34
Diabetes mellitus	2576 (14.05%)	220 (21.62%)	< 0.01	15622 (14.65%)	1859 (15.16%)	0.36
End stage renal disease	295 (1.61%)	38 (3.69%)	< 0.01	2346 (2.2%)	438 (3.57%)	< 0.01
Chronic obstructive pulmonary disease	3269 (17.83%)	227 (22.31%)	< 0.01	19407 (18.2%)	2395 (19.53%)	0.03
Congestive heart failure	2444 (13.33%)	284 (27.84%)	< 0.01	18095 (16.97%)	2495 (20.34%)	< 0.01
Nicotine dependence	4739 (25.85%)	320 (31.38%)	< 0.01	28034 (26.29%)	3383 (27.58%)	0.04
Alcohol dependence	326 (1.78%)	11 (1.08%)	< 0.01	1749 (1.64%)	156 (1.27%)	0.04
Hospital characteristics						
Hospital teaching status			< 0.01			0.10
Non-teaching	4148 (22.63%)	288 (28.31%)		17754 (16.65%)	2150 (17.53%)	
Teaching	14181 (77.36%)	730 (71.68%)		88867 (83.34%)	10114 (82.46%)	
Hospital bed size			0.34			0.04
Small	2656 (14.49%)	156 (15.37%)		13286 (12.46%)	1582 (12.9%)	
Medium	4823 (26.31%)	235 (23.04%)		26072 (24.45%)	2806 (22.88%)	
Large	10848 (59.18%)	628 (61.58%)		67263 (63.08%)	7874 (64.2%)	
Hospital location			0.20			0.81
Rural	2561 (13.97%)	176 (17.28%)		11399 (10.69%)	1325 (10.80%)	
Urban	15769 (86.02%)	843 (82.71%)		95222 (89.30%)	10939 (89.19%)	

AC: Acute cholangitis; CCY: Cholecystectomy.

Table 2 Most common reasons for readmission in patients admitted with gallstones-related acute cholangitis with the same admission vs interval cholecystectomy

Acute cholangitis with same admission CCY	Acute cholangitis with interval CCY
Sepsis (A419)	Sepsis (A419)
Acute kidney failure (N179)	Other cholangitis (K8309)
Acute pancreatitis without necrosis or infection (K8590)	Malignant neoplasm of the head of the pancreas (C250)
Melena (K921)	Obstruction of the bile duct (K831)
Hypertensive heart and chronic kidney disease with heart failure (I130)	Sepsis due to <i>Escherichia coli</i> (A4151)

CCY: Cholecystectomy.

**Figure 1 Patient selection flow diagram.****Figure 2 Kaplan-Meier curve for 30-d all-cause readmission among gallstone-related acute cholangitis patients. A: Same admission cholecystectomy; B: Interval cholecystectomy.**

gallstone cholangitis who underwent the same admission CCY were found to have significantly lower 30-d (2.2% *vs* 42.6%, $P < 0.001$) and 90-d readmission rates (2.2% *vs* 30.9%, $P < 0.01$) compared to patients who underwent ERCP alone [3].

In terms of mortality, previous studies have highlighted an increased mortality rate associated with interval or delayed CCY, which aligns with our study findings as well[3]. For instance, a retrospective cohort study conducted in 2019 revealed not only a higher risk of developing recurrent acute cholecystitis but also an elevated rate of postoperative complications associated with delayed CCY[13]. These findings can be explained by postulating that patients in the delayed CCY group may have severe clinical presentations or were not ideal surgical candidates, as evidenced by a higher comorbidity burden. Patients undergoing urgent decompression of the common bile duct are still under

Table 3 Independent predictors of 30-d readmission for patients with gallstone-related acute cholangitis with same admission cholecystectomy

	Bivariate logistic regression			Multivariate logistic regression		
	Adjusted HR	95%CI	P value	Adjusted HR	95%CI	P value
Female	1.01	0.82-1.25	0.88	-	-	-
Age (mean)	1.01	0.99-1.01	0.14	0.99	0.98-1.00	0.34
Charlson comorbidity index						
1			Reference			
2	1.47	1.06-2.04	< 0.01	1.48	0.94-2.33	0.08
3 or more	2.49	1.89-3.27	< 0.01	1.75	1.04-2.94	0.03
Median income based on the zip code						
\$1-\$38999			Reference			
\$39000-\$47999	0.98	0.74-1.30	0.92	-	-	-
\$48000-\$62999	0.96	0.72-1.29	0.83	-	-	-
> \$63000	0.89	0.65-1.21	0.47	-	-	-
Primary payer						
Medicare			Reference			
Medicaid	0.76	0.52-1.12	0.17	0.85	0.50-1.46	0.57
Private	0.68	0.52-0.90	< 0.01	0.73	0.48-1.10	0.14
Others	0.51	0.26-1.12	0.05	0.69	0.30-1.60	0.39
Comorbidities						
Diabetes mellitus	1.45	1.11-1.91	< 0.01	1.07	0.74-1.55	0.69
Hypertension	1.24	1.01-1.52	0.03	1.2	0.88-1.64	0.24
Chronic kidney disease	1.1	1.04-1.16	< 0.01	0.98	0.90-1.07	0.8
End stage renal disease	3.31	2.03-5.39	< 0.01	2.18	1.25-3.81	< 0.01
Congestive heart failure	2.37	1.85-3.02	< 0.01	1.87	1.31-2.66	< 0.01
Chronic pulmonary obstructive disease	1.5	1.18-1.91	< 0.01	1.09	0.79-1.52	0.57
Hospital teaching status						
Non-teaching			Reference			
Teaching	0.81	0.65-1.01	0.05	1.11	0.69-1.77	0.65
Hospital bed size						
Small			Reference			
Medium	0.94	0.66- 1.33	0.72	0.64	0.42-0.99	0.04
Large	1.19	0.87-1.63	0.25	0.92	0.64-1.31	0.64
Hospital location						
Rural			Reference			
Urban	0.76	0.58-0.99	0.04	0.61	0.37-1.02	0.06
Outcomes						
Intensive care unit	1.98	1.38-2.83	< 0.01	1.29	0.56-2.96	0.54
Acute respiratory failure	2.45	1.46-4.11	< 0.01	1.51	0.85-2.7	0.15
Septic shock	1.23	0.49-3.09	< 0.64	-	-	-

CI: Confidence interval; HR: Hazard ratio.

Table 4 Independent predictors of 30-d readmission for patients with gallstone-related acute cholangitis with interval cholecystectomy

	Bivariate logistic regression			Multivariate logistic regression		
	Adjusted HR	95%CI	P value	Adjusted HR	95%CI	P value
Female	1.01	0.82-1.25	0.88	0.87	0.80-0.94	< 0.01
Age (mean)	1.01	0.99-1.01	< 0.14	0.99	0.98-0.99	< 0.01
Charlson comorbidity index						
1			Reference			
2	1.47	1.06-2.04	0.12	-	-	-
3 or more	2.49	1.89-3.27	< 0.01	1.27	1.22-1.32	< 0.01
Median income based on the zip code						
\$1-\$38999			Reference			
\$39000-\$47999	0.98	0.74-1.30	0.92	-	-	-
\$48000-\$62999	0.96	0.72-1.29	0.83	-	-	-
> \$63000	0.89	0.65-1.21	0.47	-	-	-
Primary payer						
Medicare			Reference			
Medicaid	0.76	0.52-1.12	0.17	1.06	0.92-1.22	0.38
Private	0.68	0.52-0.90	< 0.01	0.97	0.87-1.09	0.69
Others	0.51	0.26-1.12	0.05	0.91	0.67-1.24	0.57
Comorbidities						
Diabetes mellitus	1.45	1.11-1.91	< 0.01	0.93	0.85-1.03	0.2
Hypertension	1.24	1.01-1.52	0.03	1.00	0.92-1.09	0.88
Chronic kidney disease	1.1	1.04-1.16	< 0.01	0.99	0.97-1.02	0.71
End stage renal disease	3.31	2.03-5.39	< 0.01	1.41	1.15-1.73	< 0.01
Congestive heart failure	2.37	1.85-3.02	< 0.01	1.06	0.96-1.18	0.19
Chronic obstructive pulmonary disease	1.5	1.18-1.91	< 0.01	0.95	0.85-1.05	0.32
Hospital teaching status						
Non-teaching			Reference			
Teaching	1.11	1.03-1.20	< 0.01	0.98	0.84-1.15	0.85
Hospital bed size						
Small			Reference			
Medium	1.08	0.98-1.21	0.11	1.02	0.90-1.17	0.66
Large	1.23	1.12-1.35	< 0.01	1.12	1.01-1.26	0.03
Hospital location						
Rural			Reference			
Urban	1.13	1.03-1.25	< 0.01	1.06	0.89-1.27	0.49
Complications						
Intensive care unit	1.98	1.38-2.83	< 0.01	1.01	0.79-1.29	0.74
Acute respiratory failure	2.45	1.46-4.11	< 0.01	1.13	0.85-1.49	0.38
Septic shock	1.23	0.49-3.09	< 0.64	1.29	0.93-1.80	0.12

CI: Confidence interval; HR: Hazard ratio.

physiological stress secondary to ongoing sepsis related to the AC, which can significantly increase the risk of morbidity and mortality associated with the procedure[18]. However, the study mentioned above demonstrated that early CCY after AC was safe and not linked to higher operative times or increased conversion rates to open surgery, irrespective of Tokyo grade[19]. Regarding disposition, the majority of patients in both cohorts were admitted to tertiary care hospitals. Patients with AC are generally sick and require biliary decompression procedures to get better. Most community hospitals in the United States do not have the availability of endoscopic or surgical biliary decompression procedures because of limited resources, which is the most likely reason why the majority of these patients are admitted or transferred to teaching hospitals.

There are relatively few studies comparing resource utilization, including LOS and hospitalization cost, between the two groups. A recently published retrospective study conducted by Hoilat *et al*[3] included patients admitted to a high-volume tertiary referral teaching hospital between January 2015 and 2021. The study reported that patients who underwent CCY during the same index admission had a nearly two-day shorter LOS than those who underwent ERCP alone. However, the results were not statistically significant. The study also found that performing laparoscopic CCY during the index admission was associated with a reduction in 30-d and 90-d readmission rates without prolonging the hospital stay[3]. In contrast to these findings, the results from our study showed an increased LOS in patients who underwent the same admission CCY and higher mean hospitalization cost in the index hospitalization, most likely due to the increased LOS and cost associated with surgery. However, in comparison, the readmissions in the delayed or interval CCY group incurred a collective total cost of \$118 million *vs* 7.12 million in the same admission CCY group. Although the most common reason for readmissions in both groups included sepsis, recurrent AC was the second most common reason in the non-CCY group. The use of a large database based on ICD-10 coding further limited our ability to explore the secondary sources of sepsis in both groups. However, we can assume that the cause of sepsis was most likely unrelated to AC.

The optimal timing of early CCY after an AC episode remains a topic of debate, leaving clinicians to ponder and use their clinical judgment. Delayed CCY in some cases may be attributed to hesitancy to conduct a CCY in the early stages after the AC episode due to the concern of increased systemic inflammation, which may increase the chances of complications. For these reasons, surgeons often prefer to allow the patient to be discharged and for a “cool-down” period before performing the CCY. In contrast, multiple recent studies have shown that early CCY following AC was not associated with longer procedure times and higher complication rates. A lower complication rate was observed when early laparoscopic CCY took place, and a lower conversion rate to open CCY regardless of the Tokyo grade[19-22].

There are several limitations to this study that must be considered when interpreting the findings. First, this is a retrospective cross-sectional study, and as with all cross-sectional studies, causality cannot be established, and only associations can be inferred. Second, this database study relies on accurate ICD-10 coding and is subject to coding errors that could affect the accuracy of the data. Additionally, the database does not include information on vital signs, laboratory results, or imaging findings, limiting the ability to determine the Tokyo grading of AC and estimate the disease severity. However, our primary focus was on studying practice trends and outcomes among patients with AC regardless of grade. Furthermore, since the National Inpatient Sample and NRD have inpatient hospitalization data, no information was available for patients who underwent outpatient CCY after index admission. We could not assess factors such as social barriers to readmission or discharge, medication compliance, or accessibility to outpatient resources. The NRD also does not record out-of-state readmissions, which could have led to underestimating the readmission rate. There are other decompression approaches available for biliary decompression, but since the latest Tokyo 2018 guidelines endorses endoscopic drainage as the preferred method for biliary decompression in cases of AC, we studied this approach. Finally, the patients selected for this study who did not undergo CCY during the index hospitalization may have introduced a selection bias, as they could represent a sicker group of patients. Despite the limitations mentioned above, this is the first large-scale study to explore the practice trends in the timing of performing CCY in patients with gallstone-related AC at a national level regardless of hospital size, type, and geographical location, giving it more generalizability and validity. Although the results indicate the potential advantages of same admission CCY over an interval or delayed CCY in terms of preventing readmission-related costs and improving patient outcomes, nevertheless, these findings do not replace individual risk assessments to determine the surgical candidacy of a patient based on clinical presentation and comorbidities. However, this topic demands further investigation to examine the long-term outcomes and cost-effectiveness of the same admission CCY, and further prospective research at a detailed level is required.

CONCLUSION

Performing CCY during the same admission for patients with gallstone-related AC significantly reduced the risk of 30-d readmissions compared with interval CCY. This approach may offset higher initial costs and improve overall patient outcomes by potentially preventing readmissions. This study highlights the importance of considering same-admission CCY for patients with gallstone-related AC to reduce readmission and associated costs. Further research is needed to explore the long-term outcomes and cost-effectiveness of this strategy, along with prospective studies to validate these findings across different patient populations and healthcare settings.

Table 5 Primary and secondary outcomes in patients admitted with gallstone-related acute cholangitis on the same admission vs interval cholecystectomy for index and 30-d readmissions

Outcomes	Index hospitalizations			30-d readmissions		
	Same admission CCY	Interval CCY	P value	Same admission CCY	Interval CCY	P value
Mortality, <i>n</i> (%)	216 (1.18)	3380 (3.17)	< 0.01	25 (2.53%)	554 (4.52%)	< 0.01
Intensive care utilization	827 (4.51%)	7454 (6.99%)	< 0.01	34 (3.36%)	464 (3.78%)	< 0.01
Acute respiratory failure	330 (1.86%)	2282 (2.14%)	< 0.01	21 (2.1%)	172 (1.4%)	< 0.01
Septic shock	165 (0.9%)	1482 (1.39%)	< 0.01	15 (1.51%)	229 (1.87%)	< 0.01
Mean length of stay (d)	7.39	6.51	< 0.01	5.3	5.7	< 0.01
Mean hospitalization cost	\$29522	\$24014	< 0.01	\$14166	\$17672	< 0.01

CCY: Cholecystectomy.

FOOTNOTES

Author contributions: Sohail A, Shehadah A, Chaudhary A, Naseem K, Iqbal A, Khan A, and Singh S were involved in the conceptualization and development of the project; Sohail A, Shehadah A, and Chaudhary A contributed to the obtaining and comprehending of the data; and all authors thoroughly reviewed the project for important intellectual content and endorsed the final draft for publication.

Conflict-of-interest statement: All the authors report no relevant conflicts of interest for this article.

Open-Access: This article is an open-access article that was selected by an in-house editor and fully peer-reviewed by external reviewers. It is distributed in accordance with the Creative Commons Attribution NonCommercial (CC BY-NC 4.0) license, which permits others to distribute, remix, adapt, build upon this work non-commercially, and license their derivative works on different terms, provided the original work is properly cited and the use is non-commercial. See: <https://creativecommons.org/licenses/by-nc/4.0/>

Country of origin: United States

ORCID number: Abdullah Sohail 0000-0002-1240-6441; Ammad Chaudhary 0000-0003-2986-3988; Ahmad Khan 0000-0002-4799-3877; Shailendra Singh 0000-0001-9505-4842.

S-Editor: Wang JJ

L-Editor: A

P-Editor: Cai YX

REFERENCES

- Kiriyama S, Kozaka K, Takada T, Strasberg SM, Pitt HA, Gabata T, Hata J, Liao KH, Miura F, Horiguchi A, Liu KH, Su CH, Wada K, Jagannath P, Itoi T, Gouma DJ, Mori Y, Mukai S, Giménez ME, Huang WS, Kim MH, Okamoto K, Belli G, Dervenis C, Chan ACW, Lau WY, Endo I, Gomi H, Yoshida M, Mayumi T, Baron TH, de Santibañes E, Teoh AYB, Hwang TL, Ker CG, Chen MF, Han HS, Yoon YS, Choi IS, Yoon DS, Higuchi R, Kitano S, Inomata M, Deziel DJ, Jonas E, Hirata K, Sumiyama Y, Inui K, Yamamoto M. Tokyo Guidelines 2018: diagnostic criteria and severity grading of acute cholangitis (with videos). *J Hepatobiliary Pancreat Sci* 2018; **25**: 17-30 [PMID: 29032610 DOI: 10.1002/jhbp.512]
- Shineha R, Inoue Y, Ikka T, Kishimoto A, Yashiro Y. A Comparative Analysis of Attitudes on Communication Toward Stem Cell Research and Regenerative Medicine Between the Public and the Scientific Community. *Stem Cells Transl Med* 2018; **7**: 251-257 [PMID: 29372590 DOI: 10.1002/sctm.17-0184]
- Hoilat GJ, Hoilat JN, Abu-Zaid A, Raleigh J, Tot J, Mandal A, Sostre V, Carvounis C, Sapkota B. Impact of early cholecystectomy on the readmission rate in patients with acute gallstone cholangitis: a retrospective single-centre study. *BMJ Open Gastroenterol* 2021; **8** [PMID: 34330787 DOI: 10.1136/bmjgast-2021-000705]
- Lee YS, Cho KB, Park KS, Lee JY, Lee YJ. Procalcitonin as a Decision-Supporting Marker of Urgent Biliary Decompression in Acute Cholangitis. *Dig Dis Sci* 2018; **63**: 2474-2479 [PMID: 29480416 DOI: 10.1007/s10620-018-4963-1]
- Takada T, Kawarada Y, Nimura Y, Yoshida M, Mayumi T, Sekimoto M, Miura F, Wada K, Hirota M, Yamashita Y, Nagino M, Tsuyuguchi T, Tanaka A, Kimura Y, Yasuda H, Hirata K, Pitt HA, Strasberg SM, Gadsch TR, Bornman PC, Gouma DJ, Belli G, Liao KH. Background: Tokyo Guidelines for the management of acute cholangitis and cholecystitis. *J Hepatobiliary Pancreat Surg* 2007; **14**: 1-10 [PMID: 17252291 DOI: 10.1007/s00534-006-1150-0]
- Takada T, Strasberg SM, Solomkin JS, Pitt HA, Gomi H, Yoshida M, Mayumi T, Miura F, Gouma DJ, Garden OJ, Büchler MW, Kiriyama S, Yokoe M, Kimura Y, Tsuyuguchi T, Itoi T, Gabata T, Higuchi R, Okamoto K, Hata J, Murata A, Kusachi S, Windsor JA, Supe AN, Lee S, Chen XP, Yamashita Y, Hirata K, Inui K, Sumiyama Y; Tokyo Guidelines Revision Committee. TG13: Updated Tokyo Guidelines for the management of acute cholangitis and cholecystitis. *J Hepatobiliary Pancreat Sci* 2013; **20**: 1-7 [PMID: 23307006 DOI: 10.1007/s00534-006-1150-0]

- 10.1007/s00534-012-0566-y]
- 7 **Manes G**, Paspatis G, Aabakken L, Anderloni A, Arvanitakis M, Ah-Soune P, Barthet M, Domagk D, Dumonceau JM, Gigot JF, Hritz I, Karamanolis G, Laghi A, Mariani A, Paraskeva K, Pohl J, Ponchon T, Swahn F, Ter Steege RWF, Tringali A, Vezakis A, Williams EJ, van Hooft JE. Endoscopic management of common bile duct stones: European Society of Gastrointestinal Endoscopy (ESGE) guideline. *Endoscopy* 2019; **51**: 472-491 [PMID: 30943551 DOI: 10.1055/a-0862-0346]
- 8 **Gomi H**, Takada T, Hwang TL, Akazawa K, Mori R, Endo I, Miura F, Kiriya S, Matsunaga N, Itoi T, Yokoe M, Chen MF, Jan YY, Ker CG, Wang HP, Wada K, Yamaue H, Miyazaki M, Yamamoto M. Updated comprehensive epidemiology, microbiology, and outcomes among patients with acute cholangitis. *J Hepatobiliary Pancreat Sci* 2017; **24**: 310-318 [PMID: 28371094 DOI: 10.1002/jhbp.452]
- 9 **Schiphorst AH**, Besselink MG, Boerma D, Timmer R, Wiezer MJ, van Erpecum KJ, Broeders IA, van Ramshorst B. Timing of cholecystectomy after endoscopic sphincterotomy for common bile duct stones. *Surg Endosc* 2008; **22**: 2046-2050 [PMID: 18270768 DOI: 10.1007/s00464-008-9764-8]
- 10 **Huang RJ**, Barakat MT, Girotra M, Banerjee S. Practice Patterns for Cholecystectomy After Endoscopic Retrograde Cholangiopancreatography for Patients With Choledocholithiasis. *Gastroenterology* 2017; **153**: 762-771.e2 [PMID: 28583822 DOI: 10.1053/j.gastro.2017.05.048]
- 11 **Reinders JS**, Goud A, Timmer R, Kruij PM, Witteman BJ, Smakman N, Breumelhof R, Donkervoort SC, Jansen JM, Heisterkamp J, Grubben M, van Ramshorst B, Boerma D. Early laparoscopic cholecystectomy improves outcomes after endoscopic sphincterotomy for choledochocystolithiasis. *Gastroenterology* 2010; **138**: 2315-2320 [PMID: 20206179 DOI: 10.1053/j.gastro.2010.02.052]
- 12 **Wang CC**, Tsai MC, Wang YT, Yang TW, Chen HY, Sung WW, Huang SM, Tseng MH, Lin CC. Role of Cholecystectomy in Choledocholithiasis Patients Underwent Endoscopic Retrograde Cholangiopancreatography. *Sci Rep* 2019; **9**: 2168 [PMID: 30778100 DOI: 10.1038/s41598-018-38428-z]
- 13 **Li VK**, Yum JL, Yeung YP. Optimal timing of elective laparoscopic cholecystectomy after acute cholangitis and subsequent clearance of choledocholithiasis. *Am J Surg* 2010; **200**: 483-488 [PMID: 20381787 DOI: 10.1016/j.amjsurg.2009.11.010]
- 14 **Agency for Healthcare Research and Quality**. Agency for Healthcare Research and Quality. Introduction the HCUP Nationwide Readmissions Database (NRD) 2020. [cited 15 December 2023]. Available from: https://www.hcup-us.ahrq.gov/db/nation/nrd/Introduction_NRD_2020.pdf
- 15 **Charlson ME**, Pompei P, Ales KL, MacKenzie CR. A new method of classifying prognostic comorbidity in longitudinal studies: development and validation. *J Chronic Dis* 1987; **40**: 373-383 [PMID: 3558716 DOI: 10.1016/0021-9681(87)90171-8]
- 16 **Agency for Healthcare Research and Quality**. HCUP Cost-to-Charge Ratio (CCR) for the National Inpatient Sample (NIS). Healthcare Cost and Utilization Project (HCUP). 2020. [cited 15 December 2023]. Available from: <https://www.hcup-us.ahrq.gov/db/ccr/ip-ccr/ip-ccr.jsp>
- 17 **Severance SE**, Feizpour C, Feliciano DV, Coleman J, Zarzaur BL, Rozycki GF. Timing of Cholecystectomy after Emergent Endoscopic Retrograde Cholangiopancreatography for Cholangitis. *Am Surg* 2019; **85**: 895-899 [PMID: 31560309 DOI: 10.1177/000313481908500844]
- 18 **Poon RT**, Liu CL, Lo CM, Lam CM, Yuen WK, Yeung C, Fan ST, Wong J. Management of gallstone cholangitis in the era of laparoscopic cholecystectomy. *Arch Surg* 2001; **136**: 11-16 [PMID: 11146767 DOI: 10.1001/archsurg.136.1.11]
- 19 **Discolo A**, Reiter S, French B, Hayes D, Lucas G, Tan L, Scanlan J, Martinez R. Outcomes following early versus delayed cholecystectomy performed for acute cholangitis. *Surg Endosc* 2020; **34**: 3204-3210 [PMID: 31482348 DOI: 10.1007/s00464-019-07095-0]
- 20 **Friis C**, Rothman JP, Burcharth J, Rosenberg J. Optimal Timing for Laparoscopic Cholecystectomy After Endoscopic Retrograde Cholangiopancreatography: A Systematic Review. *Scand J Surg* 2018; **107**: 99-106 [PMID: 29277136 DOI: 10.1177/1457496917748224]
- 21 **Trejo-Ávila M**, Solórzano-Vicuña D, García-Corral R, Bada-Yllán O, Cuendis-Velázquez A, Delano-Alonso R, Herrera-Esquivel J, Valenzuela-Salazar C. Laparoscopic cholecystectomy after endoscopic treatment of choledocholithiasis: a retrospective comparative study. *Updates Surg* 2019; **71**: 669-675 [PMID: 30644060 DOI: 10.1007/s13304-019-00624-5]
- 22 **Abe T**, Amano H, Hanada K, Bekki T, Minami T, Yonehara S, Noriyuki T, Nakahara M. Efficacy and safety of early cholecystectomy for comorbid acute cholecystitis and acute cholangitis: Retrospective cohort study. *Ann Med Surg (Lond)* 2019; **38**: 8-12 [PMID: 30581570 DOI: 10.1016/j.amsu.2018.10.031]



Published by **Baishideng Publishing Group Inc**
7041 Koll Center Parkway, Suite 160, Pleasanton, CA 94566, USA

Telephone: +1-925-3991568

E-mail: office@baishideng.com

Help Desk: <https://www.f6publishing.com/helpdesk>

<https://www.wjgnet.com>

