

Supplementary Material

Search syntax

#1 atrial fibrillation OR AF

#2 SV OR SVC OR SVCI OR superior vena cava isolation OR superior vena cava

#3 #1 AND #2

Supplemental Figures

Fig 1. Perioperative complications, between SVC isolation + PV isolation versus PV isolation-only patients.

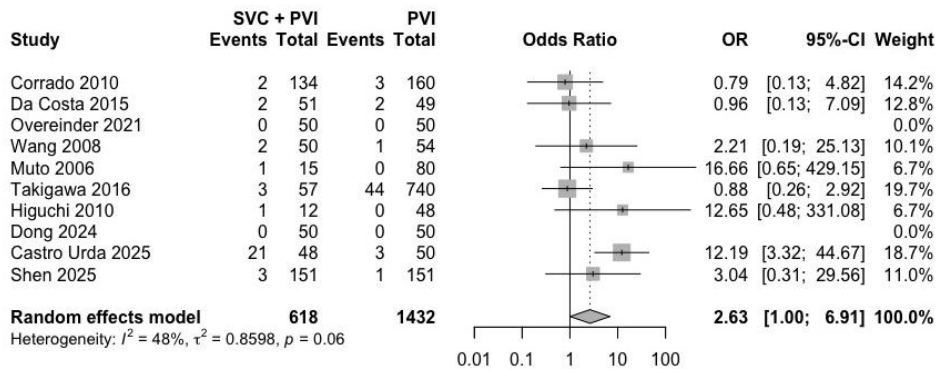


Fig 2. Phrenic nerve injury, between SVC isolation + PV isolation versus PV isolation- only patients.

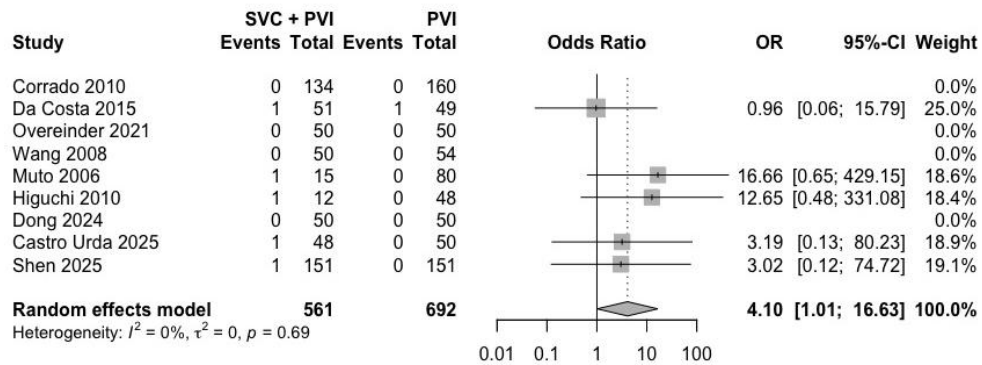


Fig 3. Procedural duration, between SVC isolation + PV isolation versus PV isolation-only patients.

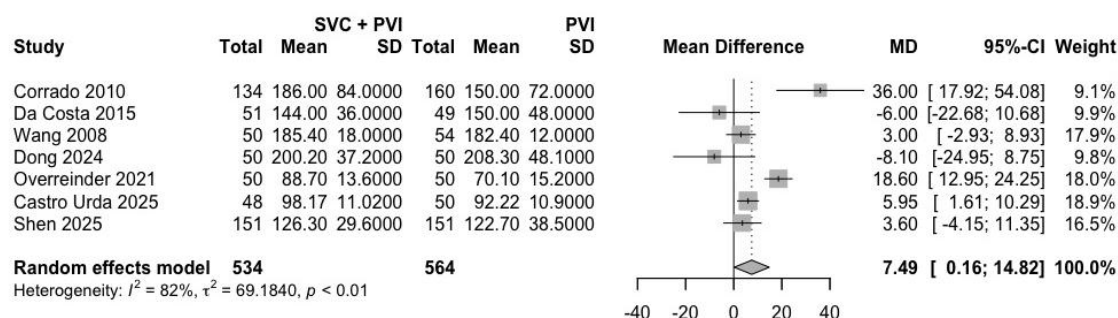


Fig 4. Fluoroscopy duration, between SVC isolation + PV isolation versus PV isolation-only patients.

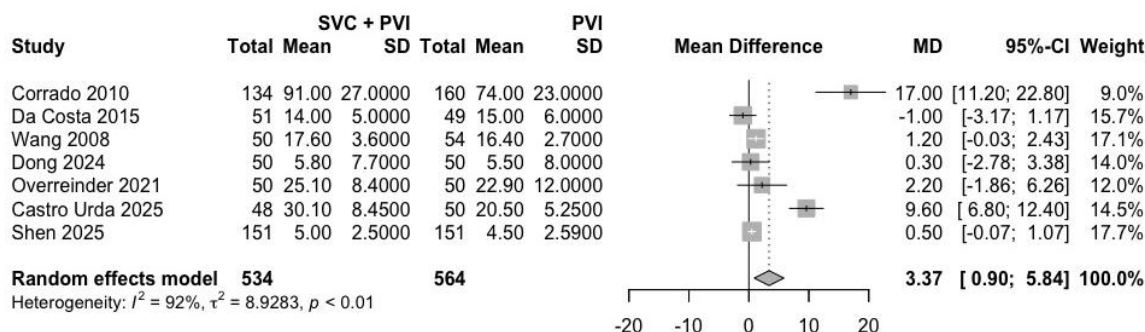


Fig 5. Sensitivity analysis, incorporating fixed-effects model, between SVC isolation + PV isolation versus PV isolation-only patients.

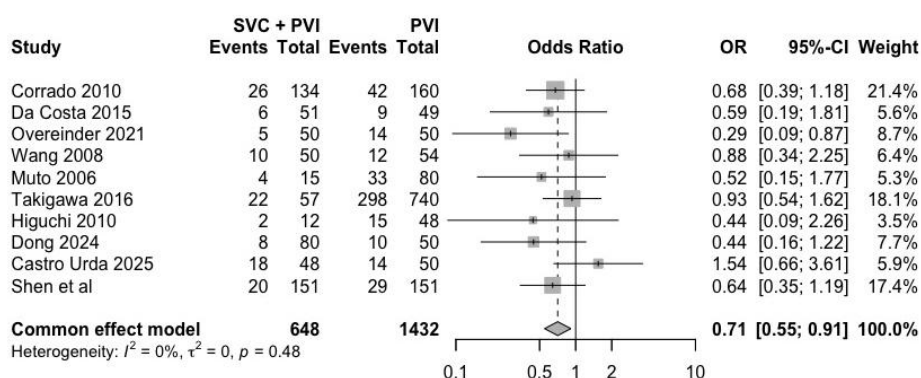


Fig 6 Forest plot of Atrial Tachyarrhythmia recurrence between SVC isolation + PV isolation versus PV isolation-only, when SVC-originating arrhythmia-inducing triggers were identified following isoproterenol infusion or burst pacing.

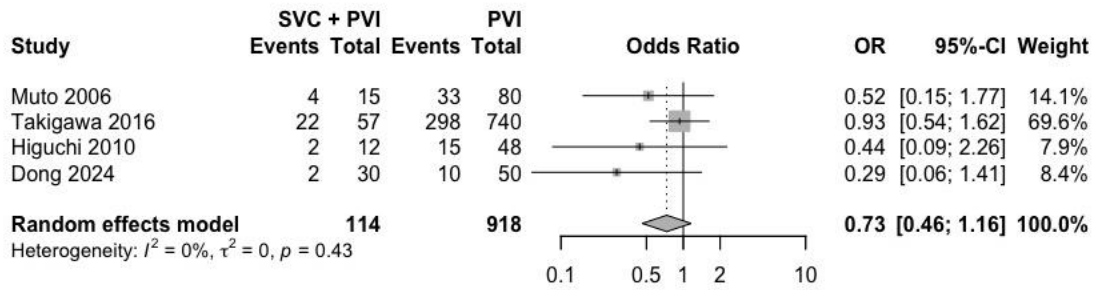


Fig 6. Forest plot of Atrial Tachyarrhythmia recurrence between SVC isolation + PV isolation versus PV isolation-only, in Asian population.

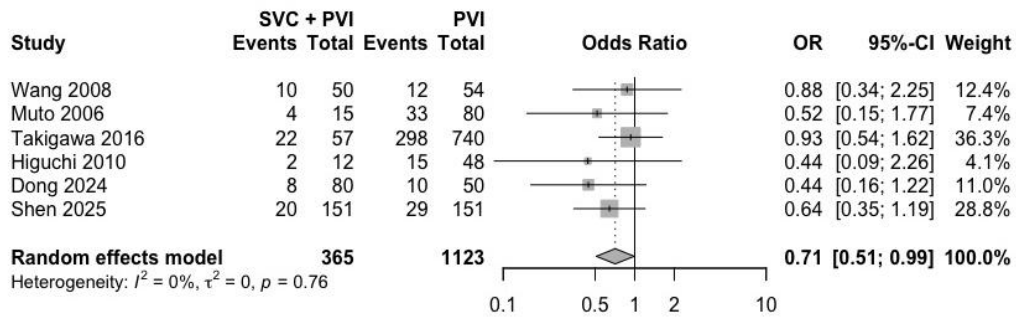


Fig 7. Forest plot of Atrial Tachyarrhythmia recurrence between SVC isolation + PV isolation versus PV isolation-only, in Caucasian population.

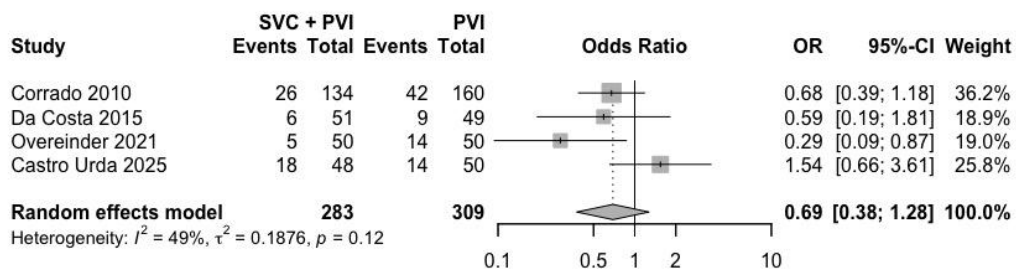


Fig 8. Randomized controlled trials assessed with the RoB 2 tool.

Study	Risk of bias domains					Overall
	D1	D2	D3	D4	D5	
Corrado2010	+	-	+	+	+	-
DaCosta2015	-	-	+	+	+	-
Wang2008	+	+	+	+	+	+
Dong2024	+	+	+	+	+	+
CastroUrda2025	+	+	+	+	+	+
Shen2025	+	+	+	+	+	+

Domains:
D1: Bias arising from the randomization process.
D2: Bias due to deviations from intended intervention.
D3: Bias due to missing outcome data.
D4: Bias in measurement of the outcome.
D5: Bias in selection of the reported result.

Judgement
- Some concerns
+ Low

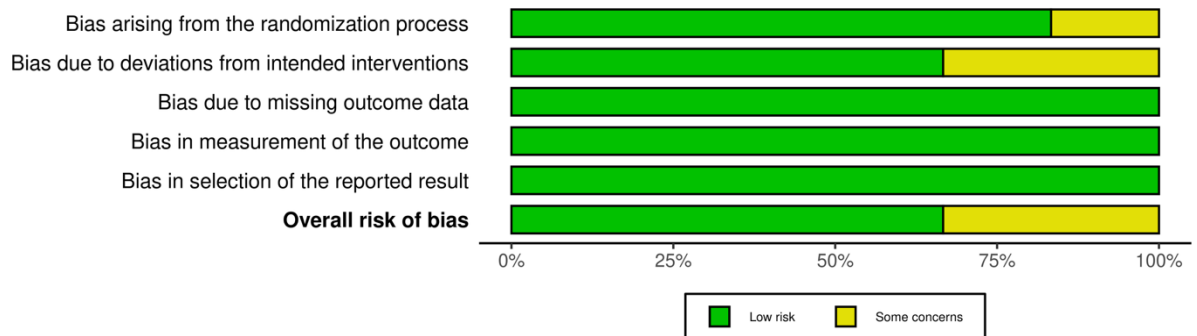


Fig 9. Observational studies assessed with the ROBINS-I tool.

		Risk of bias domains							Overall
		D1	D2	D3	D4	D5	D6	D7	Overall
Study	Muto 2006	-	+	+	+	+	+	-	-
	Higuchi 2010	-	+	+	+	+	-	+	-
	Takigawa 2016	X	+	+	-	+	+	+	X
	Overeinder 2021	-	+	+	-	+	+	+	-
	Dong 2024	-	+	+	+	+	+	+	-

Domains:
D1: Bias due to confounding.
D2: Bias due to selection of participants.
D3: Bias in classification of interventions.
D4: Bias due to deviations from intended interventions.
D5: Bias due to missing data.
D6: Bias in measurement of outcomes.
D7: Bias in selection of the reported result.

Judgement
X Serious
- Moderate
+ Low

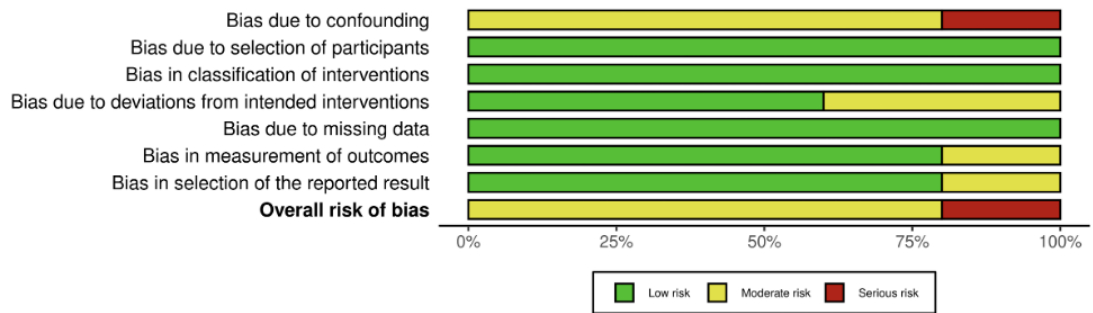


Fig 10. Funnel plot of the studies contributing to primary outcome.

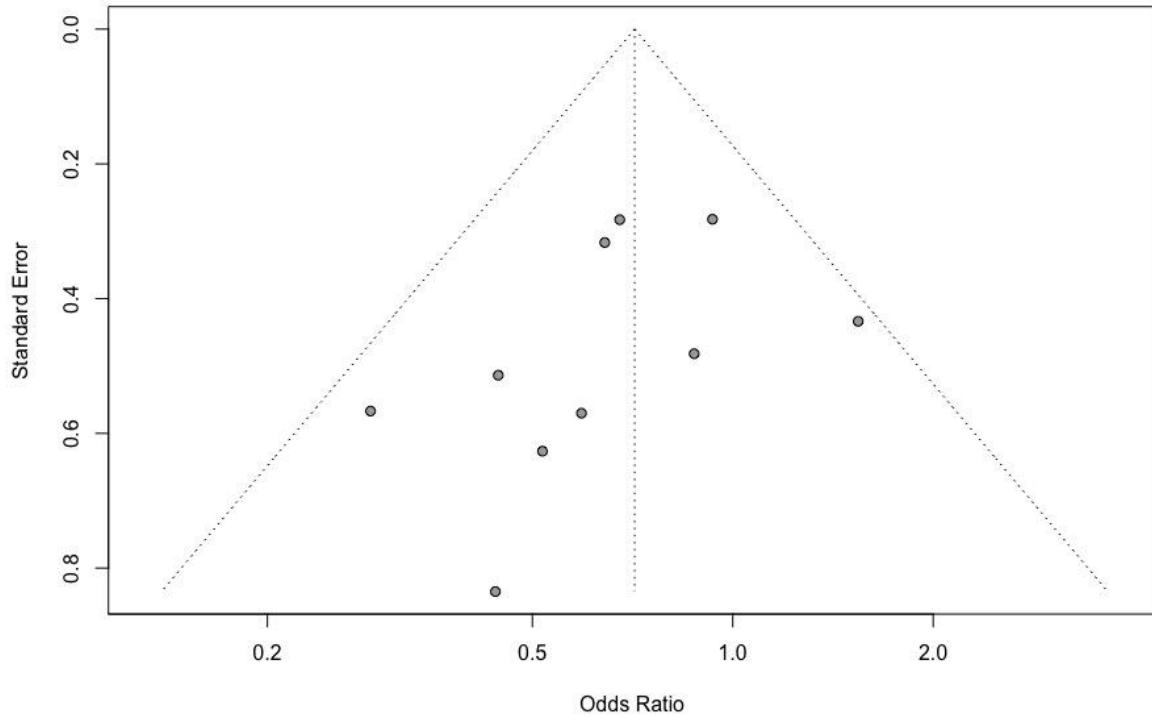


Table.1 Major adverse events, stratified by the implementation of SVC isolation strategy

*Major complications are not namely reported

	SVC isolation group						Non- SVC isolation group					
	Phrenic nerve injury	Major vascular complications	Cardiac tamponade	Cerebrovascular adverse event	Sinus node or conduction system serious injury	Severe pulmonary vein stenosis	Phrenic nerve injury	Major vascular complications	Cardiac tamponade	Cerebrovascular adverse event	Sinus node or conduction system serious injury	Severe pulmonary vein stenosis
Corrado 2010	NR	NR	NR	NR	NR	1	NR	NR	1	1	NR	NR
Da Costa 2015	1	NR	NR	NR	NR	NR	1	NR	NR	1	NR	1
Overeinder 2021	NR	NR	NR	NR	NR	NR	NR	NR	NR	NR	NR	NR
Wang 2008	NR	2	NR	NR	NR	NR	NR	1	NR	NR	NR	NR
Muto 2006	1	NR	NR	NR	NR	NR	NR	NR	NR	NR	NR	NR
Takigawa 2016*	NR	NR	NR	NR	NR	NR	NR	NR	NR	NR	NR	NR
Higuchi 2010	1	NR	NR	NR	NR	NR	NR	NR	NR	NR	NR	NR
Dong 2024	NR	NR	NR	NR	NR	NR	NR	NR	NR	NR	NR	NR
Castro Urda 2025	NR	2	NR	NR	NR	NR	NR	NR	NR	NR	NR	NR
Shen 2025	1	NR	2	NR	NR	NR	NR	NR	1	NR	NR	NR