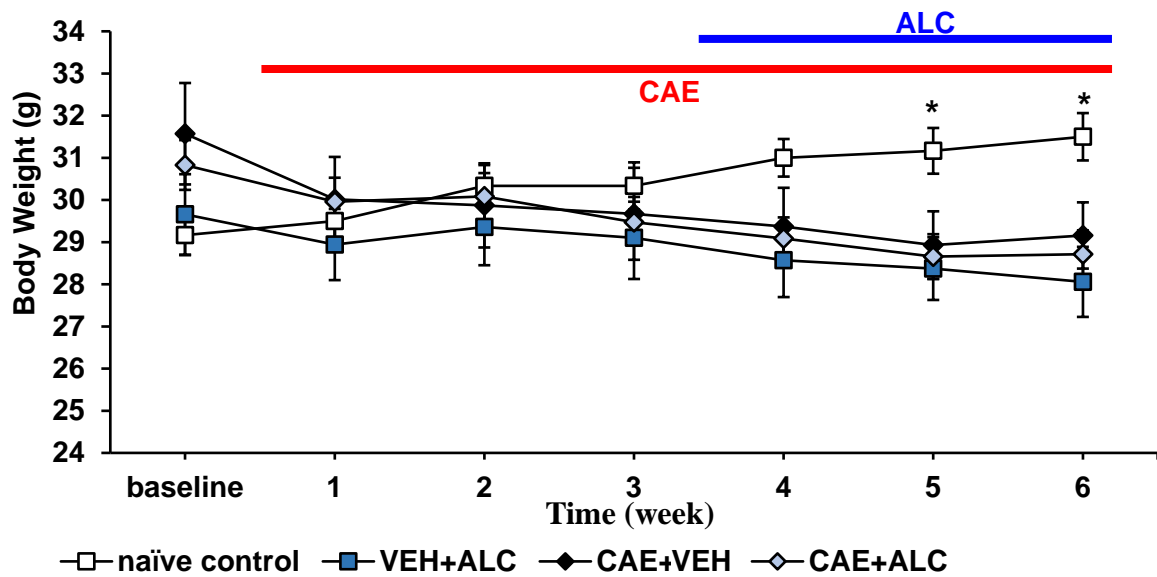


Supplementary Figure 1



Supplementary Figure 1 Repeated intraperitoneal injections impaired weight increase in all mice receiving CAE. Body weight was measured daily and at the weights at weeks' end averaged and graphed for group comparisons. In weeks 5 and 6 naïve control animals weighed significantly more than the other experimental groups. $n = 6$ / group; * $p < 0.05$; two-way ANOVA with Newman-Keuls *post hoc* test

Supplementary Table 1 Microglial convex area and somal area and their Iba1 staining intensity in brain sections from naïve control and CAE+Veh animals

| Brain region | Experimental Group | Convex area (µm²) | Convex staining intensity | Somal area (µm²) | Somal staining intensity |
|---|--------------------------------|-------------------------------------|----------------------------------|------------------------------------|---------------------------------|
| Basolateral Amygdala (BLA) | Naïve control n = 52, N = 4 | 1493 ± 89 | 181 ± 1 | 32.2 ± 1.7 | 92 ± 2 |
| | CAE+Veh n = 59, N = 5 | 2157 ± 89 ^c | 206 ± 1 ^c | 38.0 ± 1.4 ^c | 86 ± 2 |
| Dentate gyrus (DG) | Naïve control n = 54, N = 4 | 1833 ± 86 | 190 ± 2 | 33.1 ± 2.2 | 83 ± 3 |
| | CAE+Veh n = 57, N = 5 | 2355 ± 117 ^c | 190 ± 2 | 38.5 ± 1.2 ^a | 84 ± 2 |
| Central lateral and paraventricular thalamic nucleus (CL and PV) | Naïve control n = 47, N = 4 | 2201 ± 108 | 192 ± 1 | 24.9 ± 1.2 | 108 ± 2 |
| | CAE+Veh n = 54, N = 5 | 2674 ± 143 ^b | 211 ± 1 ^c | 36.9 ± 1.3 ^c | 86 ± 2 ^c |
| Hypothalamic arcuate and dorsomedial nuclei (Arc, DM) | Naïve control n = 60, N = 4 | 1941 ± 101 | 191 ± 1 | 28.6 ± 1.3 | 88 ± 2 |
| | CAE+Veh n = 52, N = 5 | 2512 ± 123 ^b | 199 ± 2 ^c | 35.7 ± 1.7 ^c | 91 ± 2 |
| Primary somatosensory cortex (S1) | Naïve control n = 43, N = 4 | 2237 ± 108 | 183 ± 3 | 42.4 ± 1.7 | 79 ± 3 |
| | CAE+Veh n = 59, N = 5 | 2292 ± 123 | 192 ± 2 ^b | 37.2 ± 1.0 ^b | 85 ± 2 |

N, number of animals; n, number of microglia cells. ^a*P* < 0.05; ^b*P* < 0.01; ^b*P* < 0.001.