



Neuroendocrine Tumors of the Stomach



ALL

IMAGES

VIDEOS

16,500,000 Results

Any time ▾

Neuroendocrine Tumors of the Stomach

<https://pubmed.ncbi.nlm.nih.gov/28325190>

Cited by: 15

Author: Britney Corey, Herbert Chen

Publish Year: 2017

Neuroendocrine Tumors of the Stomach. Gastric neuroendocrine tumors (NETs) are classified into three types. Type I gastric NETs are associated with **chronic atrophic gastritis**. They have a good prognosi...

Types and grades of stomach neuroendocrine tumours (NETs ...

<https://www.cancerresearchuk.org/about-cancer/n...> ▾

Type 1

Type 2

Type 3

Grades

Ki-67 Index Test

The most common type of stomach (gastric) neuroendocrine tumours is type 1. Between 70 and 80 out of 100 stomach NETs (between 70 - 80%) are type 1. They are slightly more common in women than in men. They are often associated with a condition called chronic **atrophic gastritis**. This causes



See more

Match Overview



1	Crossref 67 words Craig R. Gluckman, David C. Metz. "Gastric Neuroendocrine Tumors (Carcinoids)", Current Gastroenterology Reports, 20	1%
2	Internet 56 words crawled on 24-Oct-2018 www.karger.com	1%
3	Crossref 24 words Norman J. Carr, Leslie H. Sobin. "Neuroendocrine tumors of the appendix", Seminars in Diagnostic Pathology, 2004	1%

Name of Journal: *World Journal of Clinical Cases*

Manuscript NO: 64594

Manuscript Type: MINIREVIEWS

Neuroendocrine Tumors of the Stomach

Hüseyin Köseoğlu, Tolga Duzenli, Mesut Sezikli

Abstract

Gastric neuroendocrine neoplasms (g-NENs) or neuroendocrine tumors are generally slow-growing tumors with increasing incidence. They arise from enterochromaffin like cells and are divided into four types according to clinical characteristic features. Type 1

Gastric neuroendocrine neoplasms: A review



ALL

IMAGES

VIDEOS



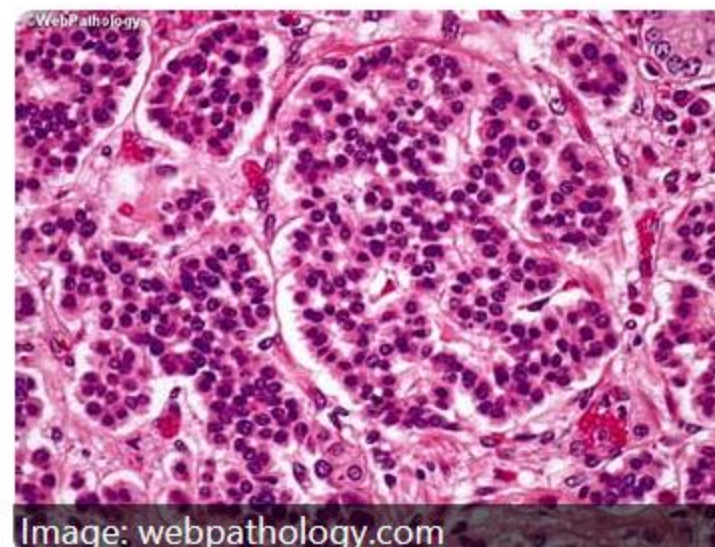
Add the Give with Bing

Also try: [stage 4 neuroendocrine cancer survival](#) · [metastatic neuroendocrine carcinoma](#)

6,650,000 Results

Any time ▼

Gastric neuroendocrine tumors are **gastric neoplasms** originating from enterochromaffin type cells and are inserted in a larger group, named gastroenteropancreatic neuroendocrine tumors. They are considered rare and variable in terms of their clinical, morphological and functional characteristics and may be indolent or aggressive.



See more