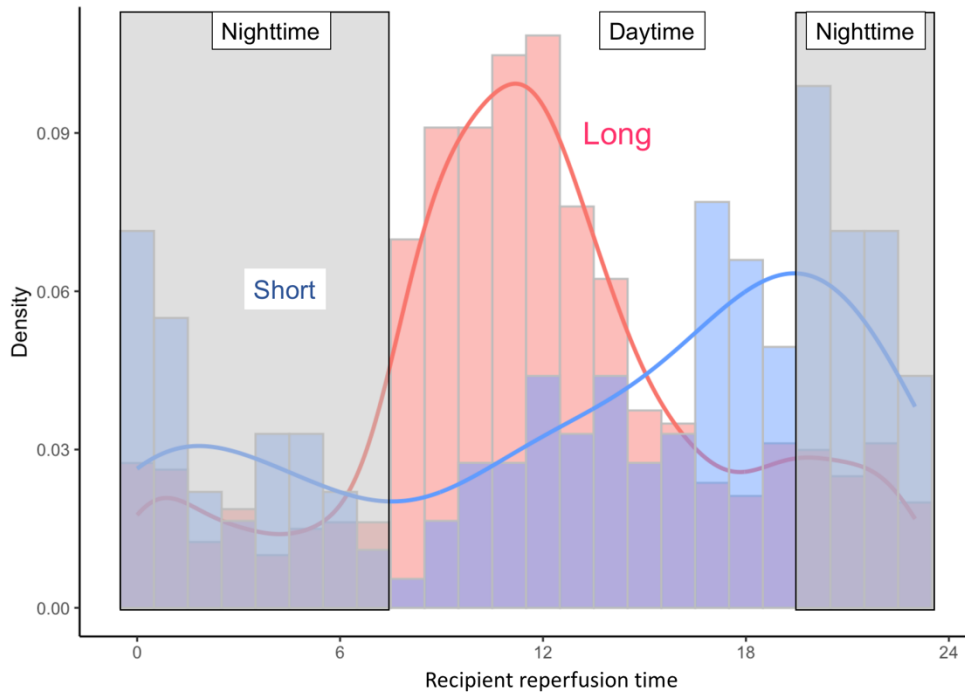
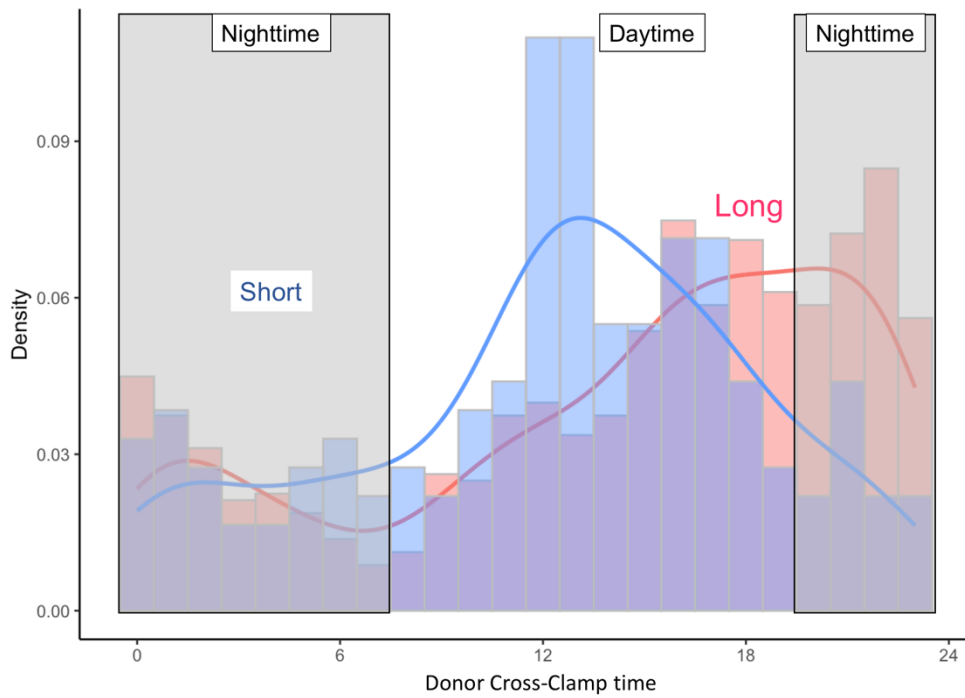


Supplement Figure 1: Distribution of Timing of the Procedure between short NMP and long NMP: A. Recipient Reperfusion Time, B. Donor Cross-Clamp Time

sFigure 1A

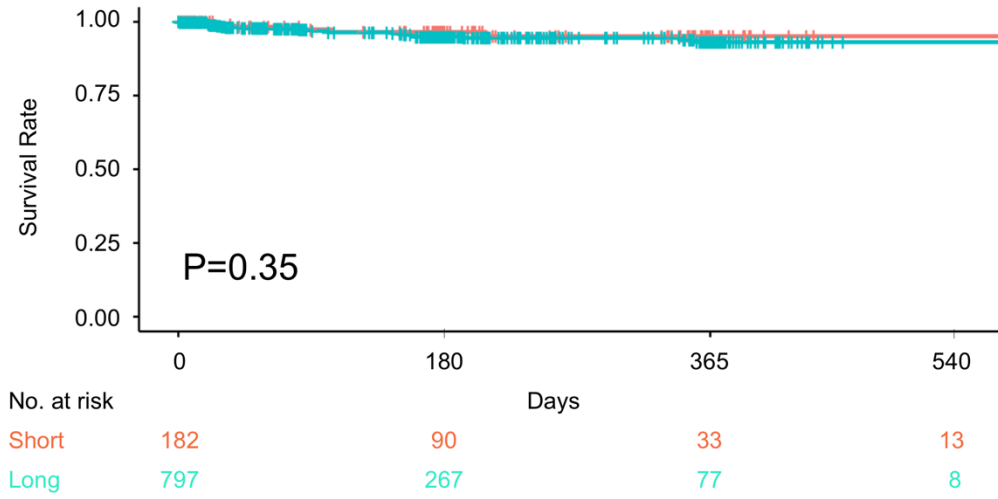


sFigure 1B

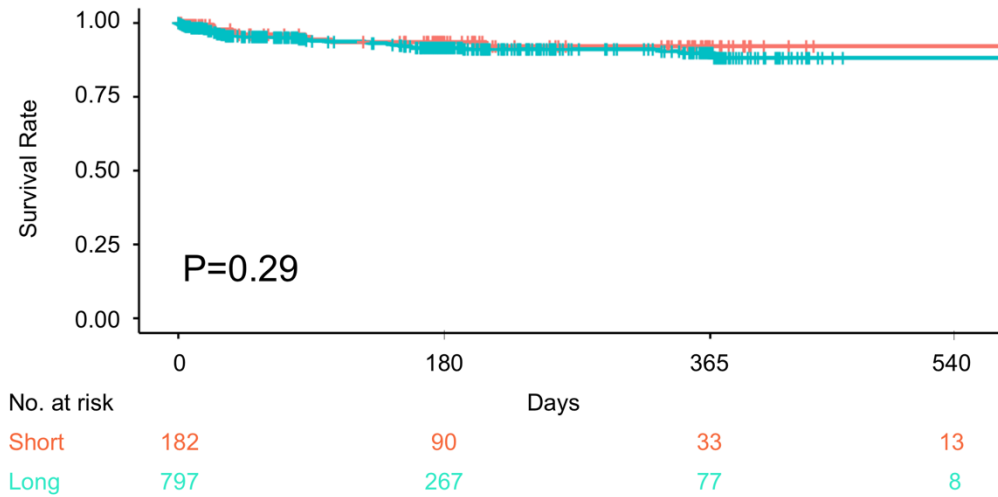


Supplement Figure 2: Comparisons of post-transplant survival and graft survival between short NMP and long NMP: A. post-transplant survival, B. graft survival

sFigure 2A



sFigure 2B



Supplement Table 1: Demographics of transplant between short NMP and long NMP

Variable	Short NMP N = 182	Long NMP N = 802	p-value
Recipient			
Age, year-old, median (IQR)	58.0 (50.0-65.0)	59.0 (51.0-65.0)	0.46
male, N (%)	125 (69%)	526 (66%)	0.43
Race, N (%) White	137 (75%)	568 (71%)	0.11
Black	12 (6.6%)	29 (3.6%)	
Hispanic	25 (14%)	158 (20%)	
Asian	7 (3.8%)	34 (4.2%)	
Others	1 (0.5%)	13 (1.6%)	
Body mass index, kg/m2, median (IQR)	28.9 (25.7-31.9)	28.6 (24.9-33.0)	0.63
Blood type, N (%) A	53 (29%)	311 (39%)	0.10
AB	8 (4.4%)	27 (3.4%)	
B	18 (9.9%)	75 (9.4%)	
O	103 (57%)	388 (48%)	
Primary diagnosis of liver disease, N (%)			
ALD	70 (38%)	268 (33%)	0.11
MASH	34 (19%)	180 (22%)	
Hepatitis C virus	11 (6.0%)	42 (5.2%)	
Hepatitis B virus	4 (2.2%)	9 (1.1%)	
Acute liver failure	0 (0%)	4 (0.5%)	
Hepatocellular carcinoma	20 (11%)	54 (6.8%)	
Others	43 (24%)	245 (31%)	
Diabetes, N (%)	60 (33%)	264 (33%)	0.99
HCV seropositive status, N (%)	18 (10%)	105 (13%)	0.27
HCV NAT positive status, N (%)	3 (2.0%)	26 (3.6%)	0.31
Previous Abdominal Surgery, N (%)	87 (48%)	400 (50%)	0.60
Portal vein thrombosis, N (%)	16 (8.8%)	130 (16%)	0.011
Dialysis at transplant, N (%)	21 (12%)	53 (6.7%)	0.024
TIPSS, N (%)	12 (6.6%)	73 (9.1%)	0.27
MELD, median (IQR)	21 (13-28)	19 (13-26)	0.067
MELD exception, N (%)	12 (6.6%)	30 (3.7%)	0.13
Ventilation at transplant, N (%)	8 (4.4%)	17 (2.1%)	0.11
Waiting days, median (IQR)	78 (16-256)	76 (13-280)	0.99
Location of patient: N (%)			0.39
ICU	18 (9.9%)	76 (9.5%)	
Inpatient	32 (18%)	111 (14%)	
Outpatient	132 (73%)	615 (77%)	
Donor			
Age, year-old median (IQR)	45.5 (34.0-57.0)	47.0 (34.0-57.0)	0.50
male, N (%)	123 (68%)	513 (64%)	0.36
Race, N (%) White	127 (70%)	530 (66%)	0.73
Black	20 (11%)	118 (15%)	

Hispanic	26 (14%)	117 (15%)	
Asian	6 (3.3%)	22 (2.7%)	
Others	3 (1.6%)	15 (1.9%)	
Blood type, N (%) A	56 (31%)	314 (39%)	0.17
AB	4 (2.2%)	12 (1.5%)	
B	21 (12%)	83 (10%)	
O	101 (55%)	393 (49%)	
BMI, median (IQR)	28.3 (24.0-33.1)	28.6 (24.5-33.7)	0.19
HCV NAT positive, N (%)	6 (3.3%)	25 (3.1%)	0.90
HCV Antibody positive, N (%)	14 (7.7%)	58 (7.2%)	0.83
DCD donor, N (%)	88 (48%)	466 (58%)	0.017
Share type, N (%): Local	82 (45%)	298 (37%)	0.024
Regional	56 (31%)	228 (28%)	
National	44 (24%)	276 (34%)	
Preservation time, median (IQR)	6.1 (4.9-7.4)	13.5 (10.6-16.7)	<0.001
Day-time: recipient reperfusion (%)	55%	78%	<0.001
Day-time: donor cross-clamp (%)	70%	59%	0.99
DRI, median (IQR)	2.00 (1.69-2.28)	2.33 (1.92-2.83)	<0.001
Distance [§] , median (IQR)	102 (19-220)	168 (59-396)	<0.001
Length of post-transplant stay	9 (7-15)	8 (6-12)	<0.001

IQR: interquartile range, ALD: alcohol related liver disease, MASH: metabolic dysfunction-associated steatohepatitis, DCD: donation after cardiac death, DBD: donation after brain death, TIPSS: transjugular intrahepatic portosystemic shunt, HCV: hepatitis C virus, MELD: model for end stage liver disease, DRI: donor risk index, Distance[§]: distance between donor and recipient hospital