

World Journal of *Clinical Cases*

World J Clin Cases 2019 May 26; 7(10): 1093-1241



**ORIGINAL ARTICLE****Retrospective Cohort Study**

- 1093** Impact of perioperative transfusion in patients undergoing resection of colorectal cancer liver metastases: A population-based study
Long B, Xiao ZN, Shang LH, Pan BY, Chai J

Retrospective Study

- 1103** Analysis of 24 patients with Achenbach's syndrome
Ada F, Kasimzade F
- 1111** Risk factors and clinical responses of pneumonia patients with colistin-resistant *Acinetobacter baumannii-calcoaceticus*
Aydemir H, Tuz HI, Piskin N, Celebi G, Kulah C, Kokturk F

Observational Study

- 1122** Diagnostic value of two dimensional shear wave elastography combined with texture analysis in early liver fibrosis
Jian ZC, Long JF, Liu YJ, Hu XD, Liu JB, Shi XQ, Li WS, Qian LX

CASE REPORT

- 1133** Selective dorsal rhizotomy in cerebral palsy spasticity - a newly established operative technique in Slovenia: A case report and review of literature
Velmar T, Spazzapan P, Rodi Z, Kos N, Bosnjak R
- 1142** Invasive myxopapillary ependymoma of the lumbar spine: A case report
Strojnink T, Bujas T, Velmar T
- 1149** Electrohydraulic lithotripsy and rendezvous nasal endoscopic cholangiography for common bile duct stone: A case report
Kimura K, Kudo K, Yoshizumi T, Kurihara T, Yoshiya S, Mano Y, Takeishi K, Itoh S, Harada N, Ikegami T, Ikeda T
- 1155** F-18 fluorodeoxyglucose positron emission tomography/computed tomography image of gastric mucormycosis mimicking advanced gastric cancer: A case report
Song BI
- 1161** Ultrasound guidance for transforaminal percutaneous endoscopic lumbar discectomy may prevent radiation exposure: A case report
Zhang MB, Yan LT, Li SP, Li YY, Huang P

- 1169** Retroperitoneoscopic approach for partial nephrectomy in children with duplex kidney: A case report
Chen DX, Wang ZH, Wang SJ, Zhu YY, Li N, Wang XQ
- 1177** Small cell lung cancer with panhypopituitarism due to ectopic adrenocorticotrophic hormone syndrome: A case report
Jin T, Wu F, Sun SY, Zheng FP, Zhou JQ, Zhu YP, Wang Z
- 1184** Therapeutic plasma exchange and a double plasma molecular absorption system in the treatment of thyroid storm with severe liver injury: A case report
Tan YW, Sun L, Zhang K, Zhu L
- 1191** Multiple rare causes of post-traumatic elbow stiffness in an adolescent patient: A case report and review of literature
Pan BQ, Huang J, Ni JD, Yan MM, Xia Q
- 1200** Liquorice-induced severe hypokalemic rhabdomyolysis with Gitelman syndrome and diabetes: A case report
Yang LY, Yin JH, Yang J, Ren Y, Xiang CY, Wang CY
- 1206** Hepatitis B virus-related liver cirrhosis complicated with dermatomyositis: A case report
Zhang J, Wen XY, Gao RP
- 1213** Small cell lung cancer starting with diabetes mellitus: Two case reports and literature review
Zhou T, Wang Y, Zhao X, Liu Y, Wang YX, Gang XK, Wang GX
- 1221** Significant benefits of osimertinib in treating acquired resistance to first-generation EGFR-TKIs in lung squamous cell cancer: A case report
Zhang Y, Chen HM, Liu YM, Peng F, Yu M, Wang WY, Xu H, Wang YS, Lu Y
- 1230** Successful endoscopic extraction of a proximal esophageal foreign body following accurate localization using endoscopic ultrasound: A case report
Wang XM, Yu S, Chen X
- 1234** Minimally invasive endoscopic maxillary sinus lifting and immediate implant placement: A case report
Mudalal M, Sun XL, Li X, Fang J, Qi ML, Wang J, Du LY, Zhou YM

ABOUT COVER

Editorial Board Member of *World Journal of Clinical Cases*, Abdullah Ozkok, MD, Associate Professor, Department of Internal Medicine and Nephrology, University of Health Sciences, Umraniye Training and Research Hospital, Istanbul, Turkey

AIMS AND SCOPE

World Journal of Clinical Cases (*World J Clin Cases*, *WJCC*, online ISSN 2307-8960, DOI: 10.12998) is a peer-reviewed open access academic journal that aims to guide clinical practice and improve diagnostic and therapeutic skills of clinicians.

The primary task of *WJCC* is to rapidly publish high-quality Case Report, Clinical Management, Editorial, Field of Vision, Frontier, Medical Ethics, Original Articles, Meta-Analysis, Minireviews, and Review, in the fields of allergy, anesthesiology, cardiac medicine, clinical genetics, clinical neurology, critical care, dentistry, dermatology, emergency medicine, endocrinology, family medicine, gastroenterology and hepatology, etc.

INDEXING/ABSTRACTING

The *WJCC* is now indexed in PubMed, PubMed Central, Science Citation Index Expanded (also known as SciSearch®), and Journal Citation Reports/Science Edition. The 2018 Edition of Journal Citation Reports cites the 2017 impact factor for *WJCC* as 1.931 (5-year impact factor: N/A), ranking *WJCC* as 60 among 154 journals in Medicine, General and Internal (quartile in category Q2).

RESPONSIBLE EDITORS FOR THIS ISSUE

Responsible Electronic Editor: Yun-Xiaojuan Wu Proofing Editorial Office Director: Jin-Lei Wang

NAME OF JOURNAL

World Journal of Clinical Cases

ISSN

ISSN 2307-8960 (online)

LAUNCH DATE

April 16, 2013

FREQUENCY

Semimonthly

EDITORS-IN-CHIEF

Dennis A Bloomfield, Sandro Vento

EDITORIAL BOARD MEMBERS

<https://www.wjgnet.com/2307-8960/editorialboard.htm>

EDITORIAL OFFICE

Jin-Lei Wang, Director

PUBLICATION DATE

May 26, 2019

COPYRIGHT

© 2019 Baishideng Publishing Group Inc

INSTRUCTIONS TO AUTHORS

<https://www.wjgnet.com/bpg/gerinfo/204>

GUIDELINES FOR ETHICS DOCUMENTS

<https://www.wjgnet.com/bpg/GerInfo/287>

GUIDELINES FOR NON-NATIVE SPEAKERS OF ENGLISH

<https://www.wjgnet.com/bpg/gerinfo/240>

PUBLICATION MISCONDUCT

<https://www.wjgnet.com/bpg/gerinfo/208>

ARTICLE PROCESSING CHARGE

<https://www.wjgnet.com/bpg/gerinfo/242>

STEPS FOR SUBMITTING MANUSCRIPTS

<https://www.wjgnet.com/bpg/GerInfo/239>

ONLINE SUBMISSION

<https://www.f6publishing.com>



Selective dorsal rhizotomy in cerebral palsy spasticity - a newly established operative technique in Slovenia: A case report and review of literature

Tomaz Velnar, Peter Spazzapan, Zoran Rodi, Natasa Kos, Roman Bosnjak

ORCID number: Tomaz Velnar (0000-0002-6283-4348); Peter Spazzapan (0000-0002-5278-7947); Zoran Rodi (0000-0002-6283-43X2); Natasa Kos (0000-0002-1515-813X); Roman Bosnjak (0000-0001-7565-0989).

Author contributions: Velnar T, Spazzapan P, Rodi Z, Kos N and Bosnjak R contributed equally to this work; Velnar T, Spazzapan P, Rodi Z, Kos N and Bosnjak R designed research; Velnar T and Spazzapan P performed research; Rodi Z, Kos N and Bosnjak R analyzed data; and Velnar T, Spazzapan P, Rodi Z, Kos N and Bosnjak R wrote the paper.

Informed consent statement: Informed consent to publish was obtained from the patient.

Conflict-of-interest statement: The authors declare that they have no competing interests.

CARE Checklist (2016) statement: The authors have read the CARE Checklist (2016), and the manuscript was prepared and revised according to the CARE Checklist (2016).

Open-Access: This article is an open-access article which was selected by an in-house editor and fully peer-reviewed by external reviewers. It is distributed in accordance with the Creative Commons Attribution Non Commercial (CC BY-NC 4.0) license, which permits others to distribute, remix, adapt, build upon this work non-commercially,

Tomaz Velnar, Peter Spazzapan, Roman Bosnjak, Department of Neurosurgery, University Medical Centre Ljubljana, Ljubljana 1000, Slovenia

Tomaz Velnar, AMEU-ECM Maribor, Ljubljana 1000, Slovenia

Zoran Rodi, Department of Neurophysiology, University Medical Centre Ljubljana, Ljubljana 1000, Slovenia

Natasa Kos, Medical Rehabilitation Unit, University Medical Centre Ljubljana, Ljubljana 1000, Slovenia

Corresponding author: Tomaz Velnar, MD, PhD, Assistant Professor, Doctor, Department of Neurosurgery, University Medical Centre Ljubljana, Zaloska 7, Ljubljana 1000, Slovenia. tvelnar@hotmail.com

Telephone: +00-386-15223250

Abstract

BACKGROUND

Spasticity affects a large number of children, mainly in the setting of cerebral palsy, however, only a few paediatric neurosurgeons deal with this problem. This is mainly due to the fact that until 1979, when Fasano has published the first series of selective dorsal rhizotomy (SDR), neurosurgeons were able to provide such children only a modest help. The therapy of spasticity has made a great progress since then. Today, peroral drugs, intramuscular and intrathecal medicines are available, that may limit the effects of the disease. In addition, surgical treatment is gaining importance, appearing in the form of deep brain stimulation, peripheral nerve procedures and SDR. All these options offer the affected children good opportunities of improving the quality of life.

CASE SUMMARY

A 15-year old boy is presented that was surgically treated for spasticity as a result of cerebral palsy. Laminotomy at L1 level was performed and L1 to S1 nerve roots were isolated and divided in smaller fascicles. Then, the SDR was made.

CONCLUSION

We describe a patient report and surgical technique of SDR that was performed in Slovenia for the first time.

Key words: Cerebral palsy; Spasticity; Selective dorsal rhizotomy; Operation; Case report

and license their derivative works on different terms, provided the original work is properly cited and the use is non-commercial. See: <http://creativecommons.org/licenses/by-nc/4.0/>

Manuscript source: Invited manuscript

Received: November 15, 2018

Peer-review started: November 16, 2018

First decision: January 12, 2019

Revised: April 23, 2019

Accepted: May 1, 2019

Article in press: May 2, 2019

Published online: May 26, 2019

P-Reviewer: Chowdhury FH, Vaudo G, Yang XJ

S-Editor: Dou Y

L-Editor: A

E-Editor: Xing YX



©The Author(s) 2019. Published by Baishideng Publishing Group Inc. All rights reserved.

Core tip: Spasticity affects a large number of children, mainly in the setting of cerebral palsy. The therapy of spasticity has made a great progress. Today, peroral drugs, intramuscular and intrathecal medicines are available. In addition, surgical treatment is gaining importance. We describe a patient report and surgical technique of SDR that was performed in Slovenia for the first time and successfully introduced in the clinical practice.

Citation: Velnar T, Spazzapan P, Rodi Z, Kos N, Bosnjak R. Selective dorsal rhizotomy in cerebral palsy spasticity - a newly established operative technique in Slovenia: A case report and review of literature. *World J Clin Cases* 2019; 7(10): 1133-1141

URL: <https://www.wjnet.com/2307-8960/full/v7/i10/1133.htm>

DOI: <https://dx.doi.org/10.12998/wjcc.v7.i10.1133>

INTRODUCTION

Spasticity is a motor disorder characterized by an increase in muscle tone that interferes with the mobility and therefore affects the quality of life^[1]. Spasticity, which results from the unbalanced factors that act on rising and lowering the muscle tone, is the result of an abnormal increase and irritability of myotactic reflexes and depends on the speed of movement. Although spasticity is evident in various diseases that affect muscle tone, such as idiopathic or secondary forms, mainly in connection with dystonia or athetosis, it is most commonly associated with cerebral palsy, which affects 2 to 3 children in 1000 people^[2]. The spasticity in cerebral palsy is not evident immediately at birth. On the contrary, it usually becomes pronounced only after the first year of life. The treatment of spasticity is important to reduce the muscle tone, improve the quality of life and reduce pain and deformations. It has two objectives: to reduce the efferent impulses that stimulate muscles and rise the abnormal muscle tone [with surgical procedures such as selective dorsal rhizotomy (SDR)] or increase the inhibitory activity on the muscle tone (with the action of drugs such as baclofen)^[2-4].

Spasticity typically affects some muscle groups more than others^[3]. In the clinical picture of a child with a cerebral palsy, muscular rigidity, tiredness, muscle pain and cramps are evident. The pain and muscle cramps are particularly pronounced in the nocturnal hours. In time, the spasticity may also lead to the deformations of the skeleton, such as luxations and subluxations of the hip and ankle joints. Additionally, upper limbs are almost always affected to some degree. The most affected are abductors and flexors. This is evident in patients with spastic paraparesis, who are standing on the toes with flexed hips and knees and internal rotation of lower limbs^[4-6].

Clinically, spasticity is described according to the affected limbs as spastic tetraparesis, spastic diplegia (or paraparesis), spastic haemy- and monoparesis^[2,4]. The most used evaluation scale for spasticity is Ashworth Scale (and very similar Modified Ashworth Scale), which determinates the degree of spasticity (Table 1). Spasticity can also affect paraspinal muscles, but this disorder is not included in the above classification. The motor function, which may also be severely affected due to the spasticity of the muscles, is classified according to the Gross Motor Function Classification System (GMFCS) (Table 2)^[4-6].

There are many forms of spasticity treatment. The aim is to reduce the degree of spasticity, rather than cure it completely^[7]. The treatment encompasses many modalities that include oral medications, intramuscular injections of intrathecal medications, physiotherapy and orthopaedic procedures and even neurosurgical operations^[8]. One of the options includes SDR. It is a neurosurgical procedure with the aim of reducing spasticity and improving mobility in children with cerebral palsy suffering from lower extremity spasticity^[9-11]. The technique involves a selective division of the lumbosacral sensory rootlets with the aid of intraoperative neurophysiological monitoring. The SDR represents a valuable surgical option especially for young patients with bilateral spastic cerebral palsy with the objective of improving lower limb function^[10].

A proper form of treatment should be therefore proposed by a multidisciplinary team with experience in each of these therapies that assesses the patients. The most important factor in predicting the SDR performance is not so much a sample of

Table 1 The Ashworth scale for classification of the degree of spasticity

SCORE- Degree of spasticity	DESCRIPTION
0	No increase in muscle tone.
1	Slight increase in tone giving a catch when the limb was moved in flexion or extension.
2	More marked increase in tone but limb easily flexed.
3	Considerable increase in tone - passive movement difficult.
4	Limb rigid in flexion or extension.

neurophysiological monitoring, acquired during the operation, but the correct preoperative selection of the patient^[12]. Choosing the correct patient for SDR is therefore of utmost importance and requires a comprehensive evaluation. Ideal patients for SDR are children between 4 and 8 years of age, with spastic paraparesis, which impedes their pattern of walking. Such patients usually have preserved strength in the lower extremities and only rare contractions. Unfortunately, only few children with cerebral palsy fulfil these requirements, in clinical practice less than 5%^[13-15].

Although SDR has been efficacious in treating spastic patients, many clinicians are not well aware of the procedure, its indications and expected outcomes due to the limited number of centres performing this procedure^[10,16]. In this article, the authors describe the SDR technique in the management of spastic diplegia in a child with cerebral palsy that was performed in Slovenia for the first time and has been introduced in the neurosurgical practice.

CASE PRESENTATION

Chief complaints

A 15-year old boy was admitted to the neurosurgery department for SDR. He was experiencing severe and painful muscle cramps and the increased muscle tone prevented him from normal walking and sitting.

History of present illness

A 15-year old boy was admitted to the neurosurgery department for SDR. He was born prematurely at the gestational age of 35 wk and postnatally sustained an intraventricular haemorrhage, grade 2. Later on, he was recovering well. There were no signs of hydrocephalus and he was regularly followed-up at paediatric neurology and physiatry. He was cognitively intact. After one year, an increased muscle tone was observed and he was included into a rehabilitation programme. A spastic diplegia started to develop and the muscle tone has increased progressively. For many years, the physiatric, orthopaedic and medicamentous care sufficed to counterbalance the spasticity, however, due to deformations and shortage of hamstrings and calf muscles he needed an orthopaedic intervention. At the age of 15, he was referred to the neurosurgeon as a result of increasing spasticity and difficulties in walking, sitting and numerous muscle cramps in lower extremities.

History of past illness

No past illnesses were documented in the new-born or mother.

Personal and family history

Unremarkable.

Physical examination upon admission

At the examination, the cranial nerves and upper extremities were functioning normally. In the lower extremities, however, spasticity was evident and the muscle tone was rated at 4, according to the Modified Ashworth Scale and to 3 according to the GMFCS. The spastic gait was evident as was the scissor-pattern walk. The sphincters were unaffected. After initial neurosurgical evaluation, a multidisciplinary team assessed and discussed possible treatment options. For muscle tone reduction, the SDR was recommended.

Laboratory examinations

Laboratory examinations were within the normal range. The haemostasis was normal, as was the blood count and the biochemistry test.

Table 2 The Gross Motor Function Classification System

SCORE- Level of spasticity	DESCRIPTION
Level I	Walks well in all settings. Balance and speed may be limited compared with children developing normally.
Level II	Walks in most settings but may have difficulty walking long distances or with balance. May utilise personal or environmental mobility aids to climb stairs.
Level III	Walks with the use of hand-held mobility aids such as K-walkers in most indoor settings. Uses wheeled mobility for longer distance travel.
Level IV	Utilises wheeled mobility aids in most settings (either attendant-propelled or powered) and requires assistance to transfer.
Level V	Transported in wheelchairs in all settings and has limited to no antigravity head, trunk and limb control.

Imaging examinations

No special imaging was required for the surgical treatment. The level L1 was marked with x-rays intraoperatively for the location of conus medullaris.

FINAL DIAGNOSIS

The final diagnosis was consistent with the spasticity as a result of cerebral palsy.

TREATMENT

After initial anaesthesiological preparation, the boy was placed prone on the operating table. The neuromonitoring for dermatomes and myotomes L2 to S2 was attached. The level L1 was marked with X-rays for the location of conus medullaris. A laminotomy L1 followed and the dural sac was exposed. With the ultrasound, the location of the conus and cauda was determined and these structures were clearly seen (Figure 1). Under the operating microscope, the dura was cut in the median line and the arachnoid dissected. The conus was exposed, surrounded by the spinal roots and left and right roots were separated. On the left side, L1 root was identified anatomically, exiting from the neuroforamen. The root is composed of three fascicles, with the most ventral one being motor and the two caudal ones sensory. These two fascicles were then separated from the motor part and one of these two rootlets was coagulated and cut, so as to disconnect 50% of the fibres (Figure 2).

Disconnection of the lower roots then followed. First, the groove separating the motor and sensory roots was identified anatomically and electrophysiologically (Figure 3). The motor roots trigger the EMG potential when touched with an instrument, on the contrary to the sensory roots. Then, the sensory roots from L2 to S2 were separated from other structures with an elastic cloth (4cm × 1.5cm). The limit between S2 and S3 roots was anatomically recognized, since the S3 roots are smaller and thinner than the S2. The L2 root, which is located most laterally, was then isolated and confirmed with the electrophysiology. This root was again separated from others with a fine cotton patty and divided into four fascicles with a fine blunt microdissector (Figure 4). Neurophysiologically the most abnormally active fascicles were coagulated and disconnected (Figure 5). The root L2 was then placed separately from other lower lumbar and sacral roots. The same procedure was exerted on roots L3 to S1. The number of fascicles was various, ranging from four to seven, and two-thirds of them were cut, specifically those with an abnormal electrophysiological response. The S2 root required a special attention. It was divided in two fascicles and the potential of the pudendal action potential was explored. Here, part of the fascicle with lower electrophysiological sphincter activity was cut. An identical procedure was repeated on the right side.

A meticulous intradural haemostasis followed and the dura was closed with a running suture. The lamina was positioned and attached on the place with sutures and the wound was closed in layers.

OUTCOME AND FOLLOW-UP

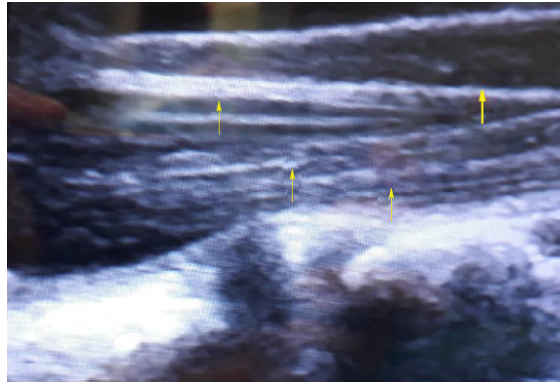


Figure 1 The conus medullaris and caud equina as seen on transdural ultrasound (US) examination. The conus is hypoechogenic on US (thick arrow) and the cauda is hyperechogenic (thin arrows).

After the operation, the patient was transferred to the neurosurgical intensive care and the next day onto the ward. The muscle tone was reduced in a day after surgery, as was the strength in the lower extremities. It was not reduced to such extent, however to prevent the patient from walking. No motor deficits were observed and the sphincter control was intact. The pain subsided gradually in as well as the muscle cramps in the lower extremities. The physiotherapy started gradually after the established protocol from the first day to the discharge, first with passive and then with active exercises, gait control and walking. A special emphasis was put into verticalisation, initially sitting on the wheelchair and then progressive training of proper walking. The patient did not experienced difficulties during this part of rehabilitation.

Ten days after the operation he was discharged to specialised rehabilitation institute for further treatment. The Ashworth Scale and the GMFCS at the discharge were both rated at 2. The neurosurgical examination was planned after on month and the general condition improved markedly. The boy was able to walk independently, the muscle tone was lower (Modified Ashowrth Scale and the GMFCS were 2). No sensory and sphincter disturbances were reported. Next neurosurgical evaluation has been planned after three and six months, as well as continuous physiatric assessment.

DISCUSSION

Spasticity in cerebral palsy is still a great challenge for patients and clinicians treating them, despite the advances in medical care, rehabilitation medicine and surgical techniques. The dorsal rhizotomy as an option for spasticity treatment is not new, as it has been practiced for over 100 years^[3-5,17]. First described in 1908 by Sherrington and later developed and performed also by Foerster, early surgical procedures were effective in reducing spasticity. Despite favourable results on muscle tone, they were associated with significant postoperative morbidity as a result of sensory loss and ataxia, which occurred in the total section of lumbar sensory roots (usually section encompassed the L2 to S1 roots). This has led to a temporary omission of the technique for several decades, until in 1979, Fasano described the selective section of the lumbar sensory roots, known as SDR. Here, only those fascicles were disconnected that were causing a permanent and pathological contraction of the muscle during the neurophysiological stimulation^[7]. Later, Peacock defined the significance of the pathological response to the electrophysiological irritation of the dorsal fascicle even more precisely. Since then, various modifications of the original surgical technique have been described. Currently, SDR is one of most commonly performed ablative treatment procedures for spasticity in cerebral palsy in children. Technical advancements over the last two decades have helped to reduce the invasiveness of the procedure even more^[17-19].

In Slovenia, the SDR has been performed for the first time in October 2017 and since then it was introduced in the regular paediatric neurosurgical activity. Until then, the children with spasticity due to the cerebral palsy were referred for surgical treatment to other centres abroad that performed this operation, most commonly to St. Louis, Missouri, United States. The initial evaluation and medical treatment were done in the Slovenian rehabilitation institute, as well as the postoperative and late rehabilitation, eventual orthopaedic corrections and continuous physiotherapy. The neurosurgical technique that was used in our patient was the same as already

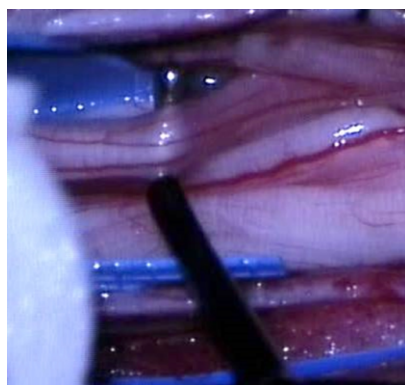


Figure 2 The exposure and isolation of the L1 root. The root is composed of three fascicles, which will be subsequently separated. The motor fascicle will be spared, as will be one of the two sensory fascicles. The electrophysiological probe can be seen (right) and the cotton patty (left), which is used for isolation of the L1 root from other nerves.

described in detail by Sindou *et al*^[20]. The laminotomy at L1 level offers an unobstructed view to the end part of the conus and the cauda and the identification of the sensory roots that need to be divided, monitored and cut, namely the roots from L1 to S2 bilaterally. The SDR can also be performed through a larger laminotomy, from L1 to S1. Using this approach each dorsal root can be recognized at the correspondent neuroforamen. This wide laminotomy offers a good view but. However, it may compromise the stability of the spine and with time lead to scoliosis^[20,21]. In our case, the bone fragment was sutured in place at the end of the operation to prevent possible instability.

Monitoring is of vital importance and helps the surgeons to confirm the radix that is going to be cut^[22]. Normally, each sensory root is divided into 4 to 8 rootlets, each of them is monitored and those evoking the most abnormal response in the muscles are cut, which is usually about 70% of the rootlets. It is particularly important to spare the innervation of the sphincters and care must be taken during the operation not to damage these nerves. The pudendal action potential is of great usefulness for recognition of these rootlets^[19-24].

The spasticity in cerebral palsy is the most common indication for SDR^[10,19-25]. This diagnosis may be set when a child at a certain age does not achieve a normal motor development (*e.g.*, head lifting, sitting, standing and walking). The gait and posture are inappropriate with an increased muscle tone. In the initial phase, the muscles are loose, with spasticity occurring later. In the early childhood, the typical signs of cerebral palsy may not be evident and the spasticity may occur later, usually after 6 mo of age. In general, the symptoms may be diverse, ranging from almost undetectable clumsiness to severe disability. Typical symptoms, regardless of type, include abnormal muscle tone, balance disorders and abnormally lively tendon reflexes, often accompanied by involuntary movements. The walk is unstable, usually scissor pattern of walking may be observed or walking on toes. As a result of increased muscle tone, the deformation of bones and joints may also occur, worsening the mobility^[10,13]. Cerebral palsy can also be accompanied with epileptic seizures, apraxia, sensory disorders and disturbances in sphincter control. Pain, which occurs in combination with a spastically elevated muscular tone, abnormal posture and hardened joints, can often be associated with these symptoms. In the spastic form of the cerebral palsy, which is the most common, the muscular tone is extremely elevated and the tendon reflexes are very pronounced. Muscle contractions may sometimes be provoked by an unexpected hearing or visual stimulus. Joint contractions worsen the general condition and improve to deformations and pain. Swallowing and speech disorders are not uncommon in this type of cerebral palsy^[18-24].

According to the affected limbs and spasticity, the cerebral palsy may be divided into a paraplegic, diplegic and tetraplegic type. The paraplegic form is most often the result of a reduced blood supply to the child's brain in the third trimester of pregnancy. Rarely diagnosed at birth, it usually manifests at the age of 6 months. It is this type that is most suitable for the SDR, as was also the case in our patient^[7,26].

The management of cerebral palsy is complex and therefore requires a multidisciplinary approach, which should be tailored for individual cases. As the SDR is one of ablative surgical therapies with irreversible properties, preoperative assessment and decision making for the operation are critical^[22,27]. Not all patients with cerebral palsy suffering from spasticity need treatment. The highest success has been

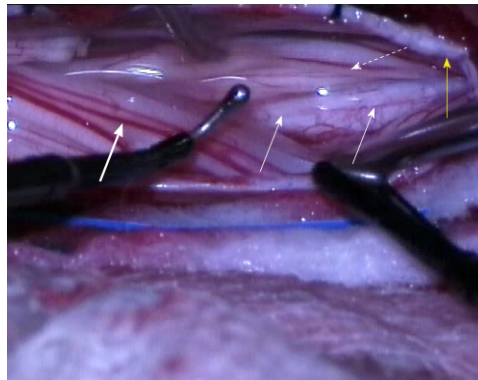


Figure 3 The intraoperative separation of motor and sensory roots and the identification of the groove that divides the roots anatomically. The electrophysiological probe can be seen in place (right) as well as the groove on conus medullaris, separating the both groups of roots (thin arrows). The thick arrow indicates sensory roots and the dotted arrow indicates motor roots. The yellow arrow indicates the dural rim, held in place by tack-up sutures.

observed in patients with Modified Ashworth grades 2 and 3. In low degrees of spasticity, the daily activities are not disturbed to such degree, that the operation would bring a relief, as it is with high grades. The goals of the treatment include improvement of child's functional state, especially the pattern of walking; facilitate the everyday care, to prevent the appearance of contractures and deformations and the onset of pain. The SDR is mostly suitable for children with spastic diplegia who are potential ambulators^[27,28]. When choosing the best possible treatment, the main considerations include the age of the child and the goals for the improvement of the general condition. When considering the age, the SDR is ideal procedure from 4 to 8 years, as the growth and brain myelinization is almost complete during this time. Rarely, the indication for SDR is justified after 15 years of age, since it is difficult to strengthen the muscles and alter the pattern of walking after the surgery. Though, recent articles have showed a positive effect on spasticity also in more severely affected patients (Modified Ashworth Scale 4 and 5)^[29,30]. After the SDR, persistent deformations and tendons should be corrected by appropriate orthopaedic surgery. The motivation of the child and parents is a fact that always must to be considered before the surgery^[26-29].

Because of pronounced spasticity and ambulatory inability, we have decided to treat the spastic diplegia in our patient, despite his age. However, after the SDR, the treatment of patients is not completed^[5,6]. The spasticity immediately after the operation declines and the muscle strength deteriorates, thus worsening the condition transiently. This usually lasts for approximately three weeks^[13]. During this time, paraesthesia and burning or painful sensations in extremities can be noted. Gradually, they disappear, the muscle tone clearly lowers and the pattern of walking improves. In our patient, the spasticity was reduced immediately and dropped from Modified Ashworth grade 4 to 2. There was neither paraesthesia or pain reported nor sphincter worsening.

In the post-operative phase, the rehabilitation plays an essential role, supplemented by possible corrective orthopaedic interventions. Due to the inhibitory effect on ascendant interneurons, also the spasticity of the upper limbs can be reduced and the effect on bladder control can be improved, as well as the general functioning^[13,24].

The operation in our patient was successful and the recovery was smooth. In the future, more patients with spastic diplegia will be included into the multidisciplinary programme for spasticity treatment, employing the SDR technique, thus improving the life of cerebral paralysis patients.

CONCLUSION

The SDR is an efficient surgical technique for reducing spasticity, especially in young children with spastic diplegia as a result of cerebral palsy. The technique requires meticulous neuromonitoring during the operation and continuous child rehabilitation with long-term follow-up. The treatment outcome of the SDR is long-lasting and the side effects with careful surgery are minimal.

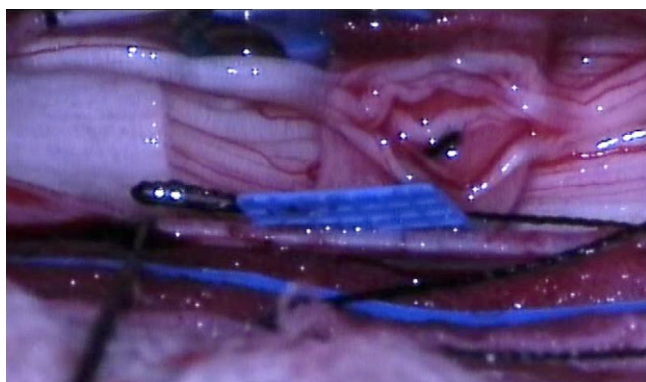


Figure 4 The separation of the sensory roots with an elastic cloth. This root was again separated from others and divided into fascicles with a fine blunt microdissector.

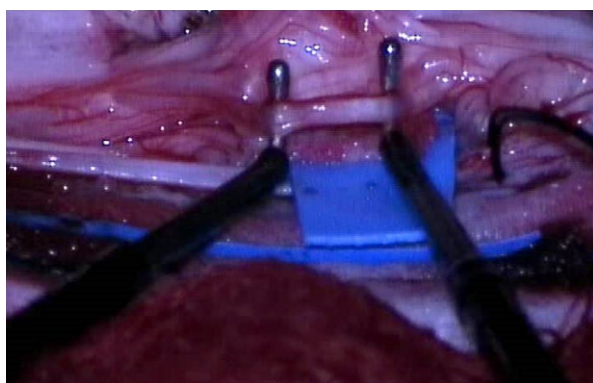


Figure 5 The separation of the root into fascicles and electrophysiological monitoring for confirmation with both probes in place before the fascicle disconnection.

REFERENCES

1. **Lieber RL**, Roberts TJ, Blemker SS, Lee SSM, Herzog W. Skeletal muscle mechanics, energetics and plasticity. *J Neuroeng Rehabil* 2017; **14**: 108 [PMID: 29058612 DOI: 10.1186/s12984-017-0318-y]
2. **O'Shea TM**. Diagnosis, treatment, and prevention of cerebral palsy. *Clin Obstet Gynecol* 2008; **51**: 816-828 [PMID: 18981805 DOI: 10.1097/GRF.0b013e3181870ba7]
3. **Nahm NJ**, Graham HK, Gormley ME, Georgiadis AG. Management of hypertonia in cerebral palsy. *Curr Opin Pediatr* 2018; **30**: 57-64 [PMID: 29135566 DOI: 10.1097/MOP.0000000000000567]
4. **D'Aquino D**, Moussa AA, Ammar A, Ingale H, Vloeberghs M. Selective dorsal rhizotomy for the treatment of severe spastic cerebral palsy: efficacy and therapeutic durability in GMFCS grade IV and V children. *Acta Neurochir (Wien)* 2018; **160**: 811-821 [PMID: 29116382 DOI: 10.1007/s00701-017-3349-z]
5. **Roberts A**, Stewart C, Freeman R. Gait analysis to guide a selective dorsal rhizotomy program. *Gait Posture* 2015; **42**: 16-22 [PMID: 25979183 DOI: 10.1016/j.gaitpost.2015.04.004]
6. **Roberts A**. Surgical management of spasticity. *J Child Orthop* 2013; **7**: 389-394 [PMID: 24432100 DOI: 10.1007/s11832-013-0512-9]
7. **Grunt S**, Fieggan AG, Vermeulen RJ, Becher JG, Langerak NG. Selection criteria for selective dorsal rhizotomy in children with spastic cerebral palsy: a systematic review of the literature. *Dev Med Child Neurol* 2014; **56**: 302-312 [PMID: 24106928 DOI: 10.1111/dmcn.12277]
8. **Graham D**, Aquilina K, Mankad K, Wimalasundera N. Selective dorsal rhizotomy: current state of practice and the role of imaging. *Quant Imaging Med Surg* 2018; **8**: 209-218 [PMID: 29675362 DOI: 10.21037/qims.2018.01.08]
9. **Sitthinamsuwan B**, Nunta-Aree S. Ablative neurosurgery for movement disorders related to cerebral palsy. *J Neurosurg Sci* 2015; **59**: 393-404 [PMID: 26635190]
10. **Farmer JP**, Sabbagh AJ. Selective dorsal rhizotomies in the treatment of spasticity related to cerebral palsy. *Childs Nerv Syst* 2007; **23**: 991-1002 [PMID: 17643249 DOI: 10.1007/s00381-007-0398-2]
11. **Engsberg JR**, Park TS. Selective dorsal rhizotomy. *J Neurosurg Pediatr* 2008; **1**: 177; discussion 178-177 [PMID: 18352759 DOI: 10.3171/PED/2008/1/3/177]
12. **Okai A**, Oberg W, Siebert B, Plante D, Walker ML, Gooch JL. Selective dorsal rhizotomy in children with spastic hemiparesis. *J Neurosurg Pediatr* 2010; **6**: 353-358 [PMID: 20887108 DOI: 10.3171/2010.7.PEDS09318]
13. **Langerak NG**, Lamberts RP, Fieggan AG, Peter JC, Peacock WJ, Vaughan CL. Functional status of patients with cerebral palsy according to the International Classification of Functioning, Disability and Health model: a 20-year follow-up study after selective dorsal rhizotomy. *Arch Phys Med Rehabil* 2009; **90**: 994-1003 [PMID: 19480876 DOI: 10.1016/j.apmr.2008.11.019]
14. **Park TS**, Liu JL, Edwards C, Walter DM, Dobbs MB. Functional Outcomes of Childhood Selective

- Dorsal Rhizotomy 20 to 28 Years Later. *Cureus* 2017; **9**: e1256 [PMID: 28649479 DOI: 10.7759/cureus.1256]
- 15 **Park TS**, Edwards C, Liu JL, Walter DM, Dobbs MB. Beneficial Effects of Childhood Selective Dorsal Rhizotomy in Adulthood. *Cureus* 2017; **9**: e1077 [PMID: 28401027 DOI: 10.7759/cureus.1077]
 - 16 **Park TS**, Johnston JM. Surgical techniques of selective dorsal rhizotomy for spastic cerebral palsy. Technical note. *Neurosurg Focus* 2006; **21**: e7 [PMID: 16918228]
 - 17 **Aquilina K**, Graham D, Wimalasundera N. Selective dorsal rhizotomy: an old treatment re-emerging. *Arch Dis Child* 2015; **100**: 798-802 [PMID: 25670404 DOI: 10.1136/archdischild-2014-306874]
 - 18 **Narayanan UG**. Management of children with ambulatory cerebral palsy: an evidence-based review. *J Pediatr Orthop* 2012; **32** Suppl 2: S172-S181 [PMID: 22890458 DOI: 10.1097/BPO.0b013e31825eb2a6]
 - 19 **Lynn AK**, Turner M, Chambers HG. Surgical management of spasticity in persons with cerebral palsy. *PM R* 2009; **1**: 834-838 [PMID: 19769917 DOI: 10.1016/j.pmrj.2009.07.016]
 - 20 **Sindou MP**, Simon F, Mertens P, Decq P. Selective peripheral neurotomy (SPN) for spasticity in childhood. *Childs Nerv Syst* 2007; **23**: 957-970 [PMID: 17605016 DOI: 10.1007/s00381-007-0399-1]
 - 21 **Steinbok P**, Hicdonmez T, Sawatzky B, Beauchamp R, Wickenheiser D. Spinal deformities after selective dorsal rhizotomy for spastic cerebral palsy. *J Neurosurg* 2005; **102**: 363-373 [PMID: 15926386 DOI: 10.3171/ped.2005.102.4.0363]
 - 22 **Tilton A**. Management of spasticity in children with cerebral palsy. *Semin Pediatr Neurol* 2009; **16**: 82-89 [PMID: 19501336 DOI: 10.1016/j.spen.2009.03.006]
 - 23 **Steinbok P**. Selective dorsal rhizotomy for spastic cerebral palsy: a review. *Childs Nerv Syst* 2007; **23**: 981-990 [PMID: 17551739 DOI: 10.1007/s00381-007-0379-5]
 - 24 **Kothbauer KF**, Deletis V. Intraoperative neurophysiology of the conus medullaris and cauda equina. *Childs Nerv Syst* 2010; **26**: 247-253 [PMID: 19904544 DOI: 10.1007/s00381-009-1020-6]
 - 25 **Gump WC**, Mutchnick IS, Moriarty TM. Selective dorsal rhizotomy for spasticity not associated with cerebral palsy: reconsideration of surgical inclusion criteria. *Neurosurg Focus* 2013; **35**: E6 [PMID: 24175866 DOI: 10.3171/2013.8.FOCUS13294]
 - 26 **Mittal S**, Farmer JP, Al-Atassi B, Gibis J, Kennedy E, Galli C, Courchesnes G, Poulin C, Cantin MA, Benaroch TE. Long-term functional outcome after selective posterior rhizotomy. *J Neurosurg* 2002; **97**: 315-325 [PMID: 12186459 DOI: 10.3171/jns.2002.97.2.0315]
 - 27 **Abou Al-Shaar H**, Imtiaz MT, Alhalabi H, Alsubaie SM, Sabbagh AJ. Selective dorsal rhizotomy: A multidisciplinary approach to treating spastic diplegia. *Asian J Neurosurg* 2017; **12**: 454-465 [PMID: 28761524 DOI: 10.4103/1793-5482.175625]
 - 28 **Dudley RW**, Parolin M, Gagnon B, Saluja R, Yap R, Montpetit K, Ruck J, Poulin C, Cantin MA, Benaroch TE, Farmer JP. Long-term functional benefits of selective dorsal rhizotomy for spastic cerebral palsy. *J Neurosurg Pediatr* 2013; **12**: 142-150 [PMID: 23713680 DOI: 10.3171/2013.4.PEDS12539]
 - 29 **Nemer McCoy R**, Blasco PA, Russman BS, O'Malley JP. Validation of a care and comfort hypertonicity questionnaire. *Dev Med Child Neurol* 2006; **48**: 181-187 [PMID: 16483393 DOI: 10.1017/S0012162206000405]
 - 30 **Ingale H**, Ughratdar I, Muquit S, Moussa AA, Vloeberghs MH. Selective dorsal rhizotomy as an alternative to intrathecal baclofen pump replacement in GMFCS grades 4 and 5 children. *Childs Nerv Syst* 2016; **32**: 321-325 [PMID: 26552383 DOI: 10.1007/s00381-015-2950-9]



Published By Baishideng Publishing Group Inc
7041 Koll Center Parkway, Suite 160, Pleasanton, CA 94566, USA
Telephone: +1-925-2238242
Fax: +1-925-2238243
E-mail: bpgoffice@wjgnet.com
Help Desk: <https://www.f6publishing.com/helpdesk>
<https://www.wjgnet.com>

