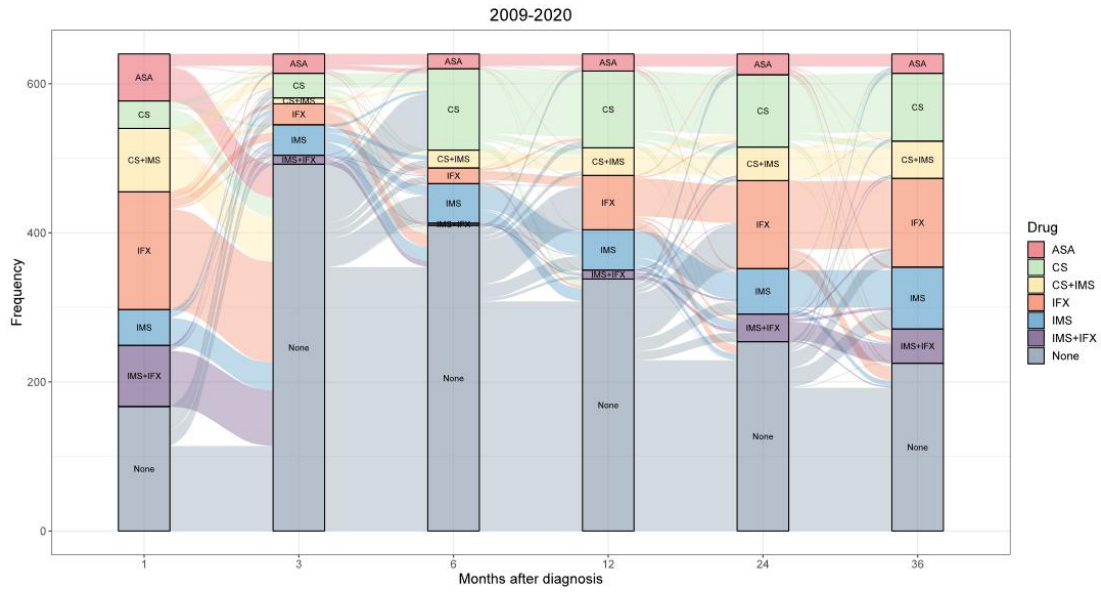
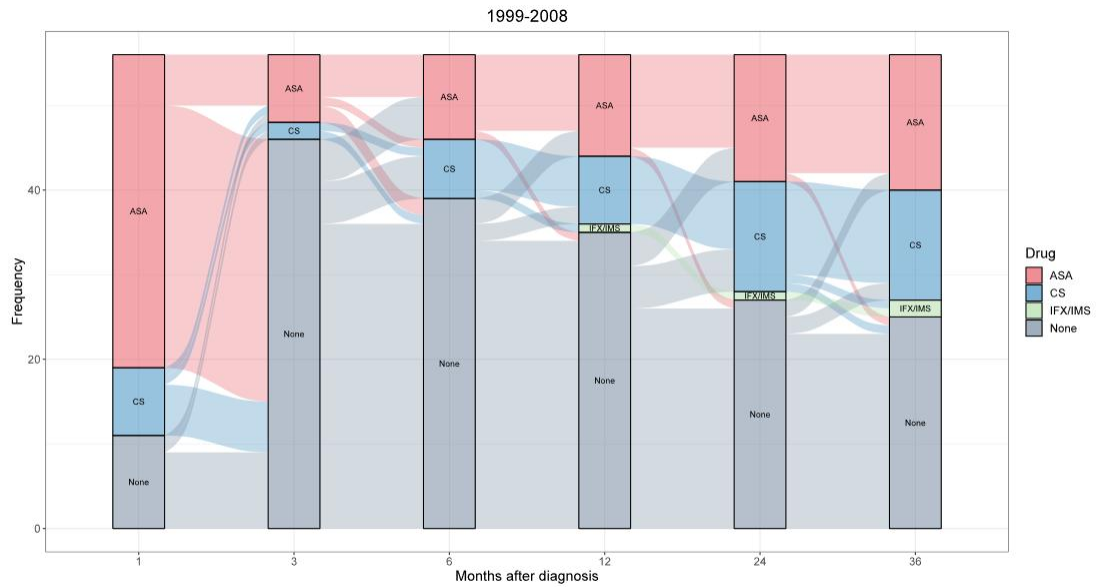


DOI: 10.3748/wjg.v0.i0.0000 Copyright ©The Author(s) 2022.

Supplementary Figure 1 Periodic changes in treatment patterns in patients with Crohn's disease between 1999 and 2008. ASA: Aminosalicylates; CS: Corticosteroids; IMS: Immunosuppressants; IFX: Infliximab.

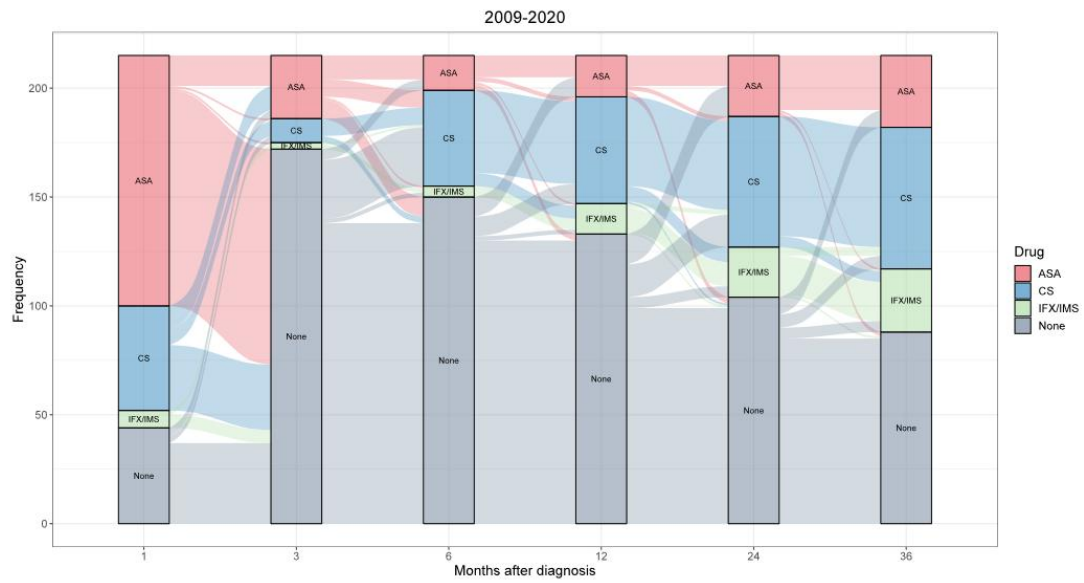


Supplementary Figure 2 Periodic changes in treatment patterns in patients with Crohn’s disease between 2009 and 2020. ASA: Aminosalicylates; CS: Corticosteroids; IMS: Immunosuppressants; IFX: Infliximab.



DOI: 10.3748/wjg.v0.i0.0000 Copyright ©The Author(s) 2022.

Supplementary Figure 3 Periodic changes in treatment patterns in patients with Ulcerative colitis between 1999 and 2008. ASA: Aminosaliclates; CS: Corticosteroids; IMS: Immunosuppressants; IFX: Infliximab.



DOI: 10.3748/wjg.v0.i0.0000 Copyright ©The Author(s) 2022.

Supplementary Figure 4 Periodic changes in treatment patterns in patients with Ulcerative colitis between 2009 and 2020. ASA: Aminosalicylates; CS: Corticosteroids; IMS: Immunosuppressants; IFX: Infliximab.

Supplementary Table 1 Temporal trends in the proportion of medications in patients with Crohn's Disease in 1999-2020

Year	The proportion of 5-ASA (%)	The proportion of CS (%)	The proportion of IMS (%)	The proportion of IFX (%)
1999	0.0	0.0	0.0	0.0
2000	0.0	16.7	0.0	0.0
2001	30.0	0.0	0.0	0.0
2002	50.0	28.6	0.0	0.0
2003	40.9	9.1	0.0	0.0
2004	42.3	19.2	0.0	0.0
2005	38.7	12.9	3.2	0.0
2006	34.0	12.8	4.3	0.0
2007	39.7	19.1	9.5	0.0
2008	34.7	16.2	13.3	2.7
2009	39.6	21.1	20.8	10.4
2010	31.3	19.5	25.2	9.7
2011	24.5	20.4	30.9	10.1
2012	19.1	19.8	30.7	16.1
2013	12.8	14.8	31.6	24.1
2014	10.7	18.5	36.4	29.9
2015	10.7	14.2	34.9	27.5
2016	8.9	12.3	36.0	30.1
2017	7.0	10.0	36.4	37.8
2018	6.2	9.4	32.6	44.6
2019	6.8	9.2	27.6	48.1
2020	5.5	5.3	26.1	60.3

5-ASA: 5-aminosalicylates; CS: Corticosteroids; IMS: Immunosuppressants; IFX: Infliximab.

Supplementary Table 2 Temporal trends in the proportion of medications in patients with ulcerative colitis in 1999-2020

Year	The proportion of ASA (%)	The proportion of CS (%)	The proportion of IMS (%)	The proportion of IFX (%)
1999	44.4	11.1	0.0	0.0
2000	25.0	0.0	0.0	0.0
2001	46.7	6.7	0.0	0.0
2002	43.5	4.4	0.0	0.0
2003	47.5	7.5	0.0	0.0
2004	41.2	5.9	0.0	0.0
2005	40.3	7.5	0.0	0.0
2006	56.3	9.3	0.0	0.0
2007	53.7	15.9	0.9	0.0
2008	55.5	13.7	1.6	0.0
2009	56.9	14.1	0.0	0.8
2010	66.9	15.1	0.0	0.7
2011	67.4	13.1	0.6	1.2
2012	64.7	15.4	1.6	1.6
2013	65.8	12.8	3.2	2.3
2014	71.0	18.4	4.3	2.5
2015	73.1	11.2	3.8	1.6
2016	69.5	13.3	3.3	3.3
2017	70.3	15.5	3.6	4.9
2018	68.1	14.8	5.0	5.8
2019	64.5	18.3	5.7	9.8
2020	58.6	14.4	8.5	16.0

5-ASA: 5-aminosalicylates; CS: Corticosteroids; IMS: Immunosuppressants; IFX: Infliximab.

Supplementary Table 3 Periodic changes in treatment patterns for patients with Crohn's Disease in 1999-2020

	0-1 mo		1-3 mo		3-6 mo		6-12 mo		12-24 mo		24-36 mo	
	F	P	F	P	F	P	F	P	F	P	F	P
	(n)	(%)	(n)	(%)	(n)	(%)	(n)	(%)	(n)	(%)	(n)	(%)
Total												
(n=686)												
5-ASA	87	12.7	33	4.8	26	3.8	29	4.2	35	5.1	35	5.1
CS	49	7.2	38	5.5	12	1.8	12	1.7	11	1.6	10	1.5
					4	0.6	0	0	4	0.6	6	0.9
CS+IM	90	13.1	8	1.2	24	3.5	38	5.5	47	6.9	53	7.7
S												
IFX	15	2.3	29	4.2	21	3.1	74	10.8	11	1.6	12	1.7
	8	1.2						8	1.2	9	1.3	5
IMS	49	7.1	41	6.0	53	7.7	54	7.9	61	8.9	86	12.5
IMS+IF	82	12.0	12	1.8	3	0.4	12	1.8	37	5.4	47	6.9
X												
None	17	2.5	52	7.6	43	6.3	35	5.2	27	3.9	23	3.4
	1	0.1	9	1.3	5	0.7	5	0.7	9	1.3	3	0.4
1999-2008												
(n=46)												
5-ASA	24	52.2	7	15.2	6	13.0	6	13.0	7	15.2	9	19.6
		1		2		0		0		2		6
CS	12	26.1	5	10.4	15	32.6	17	37.0	17	37.0	15	32.6
		1		9		6		0		0		6
CS+IM	5	10.4	-	-	-	-	1	2.2	2	4.3	3	6.5

S													
		9											
IFX	-	-	1	2.2	-	-	1	2.2	1	2.2	1	2.2	
IMS	1	2.2	-	-	-	-	-	-	-	-	-	3	6.5
IMS+IF	-	-	-	-	-	-	-	-	-	-	-	1	2.2
X													
None	4	8.7	33	71.	25	54.	21	45.	19	41.	14	30.	
				7		4		6		3		4	
2009-2020													
(n=640)													
5-ASA	63	9.8	26	4.0	20	3.1	23	3.6	28	4.4	26	4.1	
CS	37	5.8	33	5.2	10	17.	10	16.	97	15.	91	14.	
					9	0	3	1		2		2	
CS+IM	85	13.	8	1.2	24	3.7	37	5.8	45	7.0	50	7.8	
S													
		3											
IFX	15	24.	28	4.4	21	3.3	73	11.	11	18.	11	18.	
	8	7						4	8	4	9	6	
IMS	48	7.5	41	6.4	53	8.3	54	8.4	61	9.5	83	13.	
												0	
IMS+IF	82	12.	12	1.9	3	0.5	12	1.9	37	5.8	46	7.2	
X													
		8											
None	16	26.	49	76.	41	64.	33	52.	25	39.	22	35.	
	7	1	2	9	0	1	8	8	4	7	5	1	

F: Frequency; P: Percentage; 5-ASA: 5-aminosalicylates; CS: Corticosteroids; IMS: Immunosuppressants; IFX: Infliximab.

Supplementary Table 4 Periodic changes in treatment patterns for patients with ulcerative colitis in 1999-2020

	0-1 mo		1-3 mo		3-6 mo		6-12 mo		12-24 mo		24-36 mo	
	F	P	F	P	F	P	F	P	F	P	F	P
	(n)	(%)	(n)	(%)	(n)	(%)	(n)	(%)	(n)	(%)	(n)	(%)
Total (<i>n</i> = 271)												
5-ASA	15	56.	37	13.	26	9.6	31	11.	43	15.	49	18.
	2	1		7				4		9		1
CS	56	20.	13	4.8	51	18.	57	21.	73	26.	78	28.
		7				8		0		9		8
IFX/IM	8	2.9	3	1.1	5	1.9	15	5.6	24	8.9	31	11.
S												4
None	55	20.	21	80.	18	69.	16	62.	13	48.	11	41.
		3	8	4	9	7	8	0	1	3	3	7
1999-2008 (<i>n</i> = 56)												
5-ASA	37	66.	8	14.	10	17.	12	21.	15	26.	16	28.
		1		3		9		4		8		6
CS	8	14.	2	3.6	7	12.	8	14.	13	23.	13	23.
		3				5		3		2		2
IFX/IM	-	-	-	-	-	-	1	1.8	1	1.8	2	3.6
S												
None	11	19.	46	82.	39	69.	35	62.	27	48.	25	44.
		6		1		6		5		2		6
2009-2020 (<i>n</i> = 215)												
5-ASA	11	53.	29	13.	16	7.4	19	8.8	28	13.	33	15.

	5	5		5						0		4
CS	48	22.	11	5.1	44	20.	49	22.	60	27.	65	30.
		3				5		8		9		2
IFX/IM	8	3.7	3	1.4	-	-	14	6.5	23	10.	29	13.
S										7		5
None	44	20.	17	80.	15	69.	13	61.	10	48.	88	40.
		5	2	0	0	8	3	9	4	4		9

F: Frequency; P: Percentage; 5-ASA: 5-aminosalicylates; CS: Corticosteroids; IMS: Immunosuppressants; IFX: Infliximab.