

Staging systems for predicting survival of patients with hepatocellular carcinoma after surgery

Lei-Bo Xu, Jie Wang, Chao Liu, Hao-Wei Pang, Ya-Jin Chen, Qing-Jia Ou, Ji-Sheng Chen

Lei-Bo Xu, Jie Wang, Chao Liu, Ya-Jin Chen, Qing-Jia Ou, Ji-Sheng Chen, Department of Hepato-Pancreato-Biliary Surgery, Sun Yat-Sen Memorial Hospital, Sun Yat-Sen University, Guangzhou 510120, Guangdong Province, China

Hao-Wei Pang, Department of Emergency, Huangpu Branch, First Affiliated Hospital of Sun Yat-Sen University, Guangzhou 510080, Guangdong Province, China

Author contributions: Xu LB and Wang J contributed equally to this paper and wrote the manuscript; Liu C designed the study; Pang HW, Xu LB and Wang J collected the data; Chen YJ and Chen JS analyzed and interpreted the data; Ou QJ approved the submission.

Supported by Special Research Foundation of National Nature Science Foundation of China, No. 30872487

Correspondence to: Chao Liu, MD, Professor, Department of Hepato-Pancreato-Biliary Surgery, Sun Yat-Sen Memorial Hospital, Sun Yat-Sen University, Guangzhou 510120, Guangdong Province, China. mdliuchao@hotmail.com

Telephone: +86-20-34071172 Fax: +86-20-83755229

Received: June 19, 2010 Revised: August 2, 2010

Accepted: August 9, 2010

Published online: November 7, 2010

Abstract

AIM: To compare the staging systems for stratifying and predicting the prognosis of patients with hepatocellular carcinoma (HCC) after partial hepatectomy (PH).

METHODS: Clinical data about 438 HCC patients who underwent PH from January 1991 to December 2004 at our hospital were retrospectively analyzed. Tumor stage was evaluated following the Chinese tumor node metastasis (TNM) and barcelona clinic liver cancer (BCLC) staging systems, respectively. Survival curves for the HCC patients were plotted using the Kaplan-Meier method and differences were compared by the log-rank test. The accuracy of each system for predicting death of HCC patients was evaluated by calculating the area under the receiver operating characteristic curve.

RESULTS: The HCC patients were classified into stag-

es I-III, stages I-IV and stages A-C, according to the 3 staging systems, respectively. Log-rank test showed that the cumulative survival rate was significantly different for the HCC patients at 3 Chinese system stages, TNM stages I and II, TNM stages III and IV, and 3 BCLC stages ($P < 0.05$). However, no significant difference was found in the HCC patients at TNM stages II and III. The accuracy of the Chinese and BCLC staging systems was higher than that of the TNM staging system for predicting the survival rate of HCC patients.

CONCLUSION: The Chinese and BCLC staging systems are better for stratifying and predicting the prognosis of HCC patients after PH than the TNM staging system.

© 2010 Baishideng. All rights reserved.

Key words: Hepatocellular carcinoma; Tumor staging; Prognosis; Survival; Hepatectomy

Peer reviewers: Tomoharu Yoshizumi, MD, PhD, Department of Surgery, Saiseikai Fukuoka General Hospital, 1-3-46, Tenjin, Chuou-ku, Fukuoka 810-0001, Japan; Takashi Kobayashi, MD, PhD, Department of Surgery, Showa General Hospital, 2-450 Tenjincho, Kodaira, Tokyo 187-8510, Japan

Xu LB, Wang J, Liu C, Pang HW, Chen YJ, Ou QJ, Chen JS. Staging systems for predicting survival of patients with hepatocellular carcinoma after surgery. *World J Gastroenterol* 2010; 16(41): 5257-5262 Available from: URL: <http://www.wjgnet.com/1007-9327/full/v16/i41/5257.htm> DOI: <http://dx.doi.org/10.3748/wjg.v16.i41.5257>

INTRODUCTION

Hepatocellular carcinoma (HCC), one of the most common cancers in the world, especially in Eastern Asia, with a poor prognosis^[1], is the first leading cause of cancer-related death in the southeast of China^[2]. Treatment modalities for HCC are strongly dependent on tumor stage

and the underlying liver diseases. Surgical intervention is the only potentially curative modality for it at present. However, the long-term prognosis of HCC patients remains dismal even after radical excision or liver transplantation^[3].

Staging systems are used to define the prognosis of HCC and its treatment^[4]. Generally, a better clinical staging system can stratify patients according to their survival time, and is reliable and useful for comparing the curative effects on HCC. Several HCC staging systems have been proposed, such as the Okuda staging system^[5], tumor node metastasis (TNM) staging system of the American Joint Committee on Cancer (AJCC)^[6], cancer of the liver Italian program (CLIP) scoring system^[7], Barcelona clinic liver cancer (BCLC) staging classification^[8], Japan integrated staging (JIS) score^[9], and Tokyo score^[10]. However, no worldwide consensus has been reached on the use of any given HCC staging systems. Therefore, more accurate classification of HCC patients with a homogeneous prognosis would at minimum improve the application of currently available treatment modalities.

The Chinese staging system, established by the Chinese Society of Liver Cancer (CSLC) in 1999^[11,12], combines the tumor-related factors and liver function reserve. However, its application in stratifying and predicting the prognosis of HCC patients remains to be defined. This study was to evaluate and compare the Chinese staging system, the AJCC TNM staging system (7th edition) and the BCLC staging system for stratifying and predicting the prognosis of a large cohort of Chinese HCC patients after partial hepatectomy (PH).

MATERIALS AND METHODS

Patients

Four hundred and thirty-eight patients with HCC who underwent PH from January 1991 to December 2004 at our hospital were included in this study. The diagnosis of HCC was pathologically confirmed. Clinicopathological features and survival rates of the patients were analyzed. The study was approved by the Ethical Committee of Sun Yat-Sen Memorial Hospital and in accordance with the Helsinki Declaration of 1975. Written informed consent was obtained from the patients or their guardians.

Tumor stage

HCC was divided into different stages following the criteria for the Chinese, TNM and BCLC staging systems, respectively. The detailed definition and criteria for the Chinese staging system are listed in Table 1.

Treatment

All patients underwent non-anatomical resection. According to the Couinaud's nomenclature for liver segmentation, minor hepatectomy (1-2 segments), major hepatectomy (≥ 3 segments), and wedge resection were performed in 179 (40.9%), 47 (10.9%), and 212 (48.2%) patients, respectively. Of the 438 patients, 24 (5.5%) with

Table 1 Definition and criteria of Chinese staging system for hepatocellular carcinoma (1999)

Stage	Tumor	Thrombi	CLN metastasis	Distant metastasis	Child-Pugh score
I a	Solitary ≤ 3 cm	No	No	No	A
I b	Solitary or two ≤ 5 cm in single lobe	No	No	No	A
II a	Solitary or two ≤ 10 cm in single lobe, or two ≤ 5 cm in bilateral lobes	No	No	No	A
II b	Solitary or two > 10 cm in single lobe, or two > 5 cm in bilateral lobes	No	No	No	A
III a	Any	PV-branch, HV or BD	No	No	A
	Any	No	No	No	B
	Any	PV-trunk or IVC	Yes/No	Yes/No	A/B
	Any	Yes/No	Yes	Yes/No	A/B
III b	Any	Yes/No	Yes/No	Yes	A/B
	Any	Yes/No	Yes/No	Yes/No	C

CLN: Celiac lymph nodes; PV: Portal vein; HV: Hepatic vein; BD: Bile duct; IVC: Inferior vena cava.

unresectable HCC underwent surgery after trans-catheter hepatic arterial chemoembolization (TACE, down-staged). Moreover, HCC patients with inoperable intrahepatic recurrence or extrahepatic metastases received combined therapies, including TACE, radiofrequency ablation (RFA), microwave coagulation therapy (MCT), percutaneous ethanol injection (PEI), and biotherapy or traditional Chinese therapy.

Follow-up

During the first 6 mo after operation, the patients were re-examined every 1-2 mo followed by every 3-6 mo. The clinical, laboratory and radiological (abdominal computed tomography scan and chest X-ray) data were collected at each follow-up. Three hundred and ninety-two (89.5%) HCC patients were followed-up until the end of January 2005 or death, while 46 (10.5%) HCC patients were lost during the follow-up. The median follow-up time was 21 mo (range 1-156 mo).

Statistical analysis

Statistical analysis was conducted with the SPSS software package (version 13.0, SPSS, Chicago, IL). Quantitative data were presented as mean \pm SE. Survival curves for the HCC patients were plotted using the Kaplan-Meier method and examined by the log-rank test. The accuracy of each system for predicting the 1-, 3-, and 5-year rates of HCC patients was evaluated by calculating the area under the receiver operating characteristic curve. Patients censored before 1, 3 and 5 years were excluded from the analysis. $P < 0.05$ was considered statistically significant.

Table 2 Characteristics of hepatocellular carcinoma patients enrolled in this study

Characteristics	n (%)
Sex	
Male	380 (86.8)
Female	58 (13.2)
Age (yr)	
≤ 50	235 (53.6)
> 50	203 (46.4)
Child-Pugh score	
Class A	391 (89.3)
Class B	47 (10.7)
Tumor number	
Single	374 (85.4)
Two	29 (6.6)
Multiple	35 (8)
Tumor size (cm)	
≤ 5	166 (37.9)
> 5	272 (62.1)
Tumor location	
Single lobe	389 (88.8)
Bilateral lobes	49 (11.2)
Capsular invasion	
With	346 (79)
Without	92 (21)
Vascular invasion	
With	84 (19.2)
Without	354 (80.8)
Lymph node metastasis	
With	11 (2.5)
Without	427 (97.5)
Extra-hepatic metastasis	
With	7 (1.6)
Without	431 (98.4)
Histological grade	
G1	129 (29.5)
G2	188 (42.9)
G3	121 (27.6)

Table 3 Overall survival rates of hepatocellular carcinoma patients according to their tumor stage

Tumor stage	n	Survival rate (%)		
		1-yr	3-yr	5-yr
CS				
I	132	0.916	0.760	0.693
II	265	0.622	0.426	0.281
III	41	0.330	0.126	0.126
TNM				
I	271	0.825	0.652	0.548
II	67	0.521	0.354	0.216
III	82	0.437	0.235	0.153
IV	18	0.278	/	/
BCLC				
A	178	0.870	0.678	0.602
B	165	0.756	0.574	0.402
C	95	0.375	0.182	0.142

CS: Chinese staging; TNM: Tumor node metastasis; BCLC: Barcelona clinic liver cancer.

Table 4 Accuracy of three staging systems for the death of hepatocellular carcinoma patients 1, 3 and 5 years after partial hepatectomy

System	AUC (95% CI)		
	1-yr death	3-yr death	5-yr death
CS	0.709 (0.658-0.761)	0.703 (0.645-0.761)	0.720 (0.648-0.791)
TNM	0.718 (0.662-0.774)	0.702 (0.646-0.759)	0.695 (0.629-0.760)
BCLC	0.730 (0.675-0.785)	0.701 (0.644-0.757)	0.710 (0.645-0.776)

AUC: Area under the receiver operating characteristic curve; CI: Confidence interval; CS: Chinese staging; TNM: Tumor node metastasis; BCLC: Barcelona clinic liver cancer.

RESULTS

Clinicopathological features and survival of HCC patients

The general characteristics of the 438 HCC patients are summarized in Table 2. The mean and median ages of the patients were 50.0 ± 0.6 years and 49.0 years (range: 35-68 years), respectively. By the end of follow up, 223 HCC patients (50.9%) died. The 1-, 3- and 5-year postoperative overall survival rates were 72.2%, 53.5% and 43.3%, respectively, for the patients after PH.

Prognosis stratification according to the three clinical staging systems

The 438 HCC patients were classified into stages I-III, stages I-IV and stages A-C according to the Chinese, TNM and BCLC staging systems, respectively. The log-rank test showed that the cumulative survival rate was significantly different for the HCC patients at 3 Chinese system stages, TNM stages I and II, TNM stages III and IV, and 3 BCLC stages (Table 3 and Figure 1, *P* < 0.05). However, no significant difference was found in the HCC patients at TNM stages II and III (*P* > 0.05).

Accuracy of the three clinical staging systems for predicting survival rate of HCC patients

The accuracy of 3 staging systems for predicting the survival rate of HCC patients 1, 3 and 5 years after PH is summarized in Table 4. The accuracy of the Chinese and BCLC staging systems was higher than that of the TNM staging system for predicting the survival rates of HCC patients (Figure 2).

DISCUSSION

HCC is the second most lethal cancer after pancreatic ductal adenocarcinoma, leading to about 600 000 deaths every year worldwide, with nearly 55% of the deaths occurred in China alone^[3]. The long term prognosis of HCC patients is extremely dismal and the incidence of HCC is continuously growing globally^[1,13,14]. In the southeast of China, HCC is the leading cause of cancer-related death despite aggressive conventional therapies^[2]. Surgery remains the most effective treatment of HCC with a curative potential^[15,16]. However, HCC patients even after curative resection of the tumor often have a high rate of relapse.

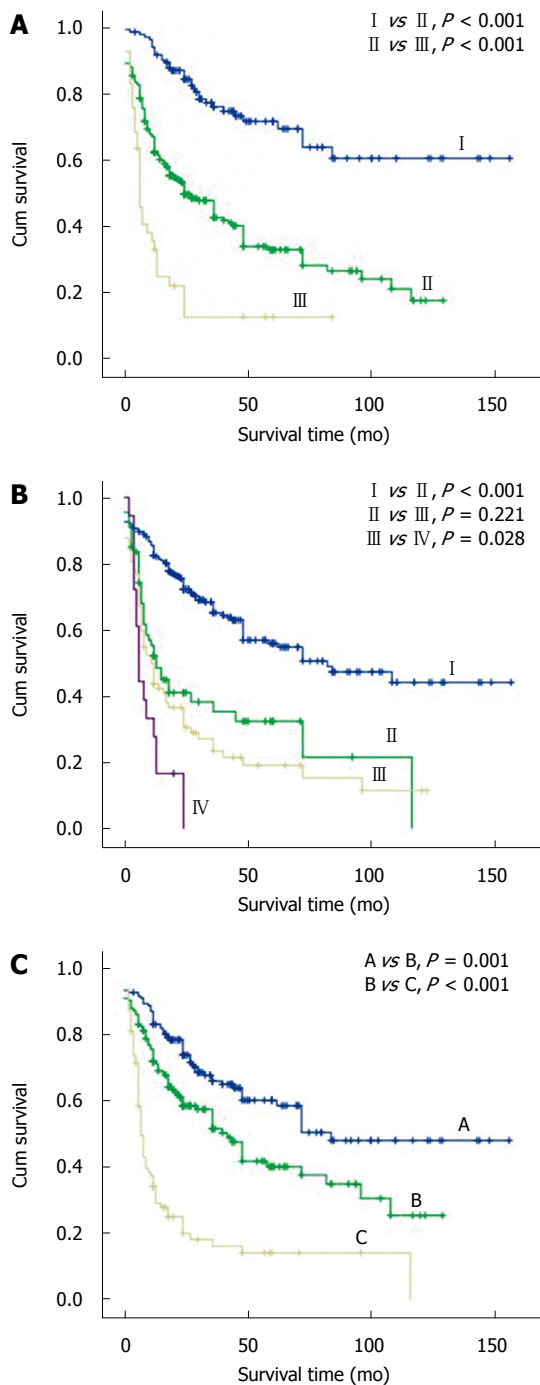


Figure 1 Survival curves for hepatocellular carcinoma patients according to the Chinese staging system (A), tumor node metastasis staging system (B), barcelona clinic liver cancer staging system (C).

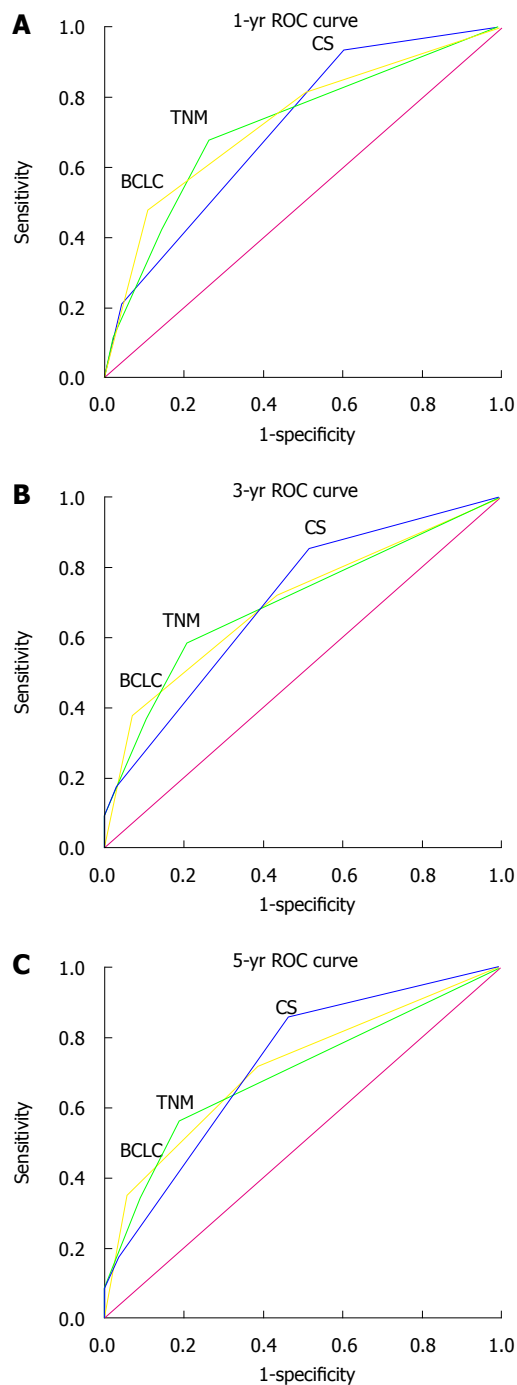


Figure 2 Accuracy of the three staging systems for predicting the 1-year (A), 3-year (B), 5-year (C) survival rates of hepatocellular carcinoma patients. ROC: Receiver operating characteristic curve; CS: Chinese staging; TNM: Tumor node metastasis; BCLC: Barcelona clinic liver cancer.

Therefore, tools that can be used to stratify the prognosis of HCC patients after therapy are urgently needed. Gene-expression analysis has led to the successful molecular classification of HCC according to its prognosis, aetiology and intra-hepatic recurrence^[17]. However, it has not been widely accepted due to its high cost.

Staging systems are often used to select primary and adjunctive therapies and to assess their outcome. Generally, a well defined clinical staging system not only can classify HCC patients and predict their survival time, but

also can be generally applied globally. Increasing evidence shows that liver function reserve and tumor-related factors can also significantly influence the prognosis of HCC patients^[4]. Chen *et al*^[18] reported that a better staging system can provide more valid tumor-related factors and liver function parameters. Therefore, both tumor-related features and liver function reserve should be included in the clinical staging systems for HCC^[19].

Several clinical staging systems are available for pre-

dicting the prognosis of HCC patients after PH at present. However, no worldwide consensus has been reached on which staging system is the best for predicting the prognosis of HCC patients after surgery^[20]. Although the Okuda staging system^[5], CLIP scoring system^[7], JIS score^[9], and Tokyo score^[10] are widely used, they have been mostly applied to unresectable HCC, and none is universally accepted^[21]. The TNM staging system is the most widely used system worldwide at present^[21]. However, the AJCC TNM staging system does not include any measurement of liver functions and is thus not widely used^[20]. Llovet *et al.*^[22] reported that the AJCC TNM staging system fails to adequately stratify HCC patients and predict their prognosis. Lu *et al.*^[23] also reported that the TNM staging system provides inadequate information for the prognosis of HCC patients.

In the present study, application of the CS system in stratifying and predicting prognosis of a large cohort of Chinese HCC patients ($n = 438$) after PH was investigated and compared to that of the AJCC TNM and BCLC staging systems. The log-rank test showed that the cumulative survival rate was significantly different for HCC patients at Chinese system stages, TNM stages I and II, TNM stages III and IV, and 3 BCLC stages, while no significant difference was found in the cumulative survival rate of HCC patients at TNM stages II and stage III. The accuracy of the Chinese and BCLC staging systems was higher than that of the TNM staging system for predicting the long-term survival (3- and 5-year) rates of HCC patients after PH, indicating that the Chinese and BCLC staging systems are better than the TNM staging system for stratifying and predicting the prognosis of HCC patients after PH. In our study, the AJCC TNM staging system could not accurately stratify the HCC patients with multiple nodules or vascular/peripheral invasion.

In conclusion, the Chinese and BCLC staging systems are better than the AJCC TNM staging system for stratifying and predicting the prognosis of HCC patients after PH. Further studies are needed to establish a single, worldwide staging system that can stratify and predict the prognosis of HCC patients after PH.

COMMENTS

Background

Staging systems are used to define the prognosis and treatment of hepatocellular carcinoma (HCC) patients. Several staging systems are available for predicting the prognosis of HCC patients, but no worldwide consensus has been reached on the use of any given HCC staging systems. Therefore, more accurate classification of HCC patients with homogeneous prognosis is urgently needed.

Research frontiers

Although the Okuda and cancer of the liver Italian program scoring systems, Japan integrated staging score, and Tokyo score are widely used, they have been mostly applied to unresectable HCC patients. The tumor node metastasis (TNM) staging system for HCC does not include any measurement of liver functions and is thus not widely used. The Chinese staging system for stratifying and predicting the prognosis of HCC patients remains to be defined.

Innovations and breakthroughs

The Chinese staging system was studied for stratifying and predicting the prognosis of HCC patients. Furthermore, the applicability of the Chinese staging system was compared with other staging systems for stratifying and predicting the prognosis of HCC patients after partial hepatectomy.

Applications

The results of this study demonstrate that the Chinese staging system can be used for predicting the prognosis of HCC patients after partial hepatectomy.

Peer review

The authors evaluated and compared the Chinese, American Joint Committee on Cancer (AJCC) TNM and Barcelona clinic liver cancer (BCLC) staging systems for stratifying and predicting the prognosis of a large cohort of Chinese HCC patients after partial hepatectomy. The results reveal that the Chinese and BCLC staging systems are better than AJCC TNM staging system for stratifying and predicting the prognosis of HCC patients after partial hepatectomy.

REFERENCES

- 1 **Jemal A**, Siegel R, Ward E, Hao Y, Xu J, Thun MJ. Cancer statistics, 2009. *CA Cancer J Clin* 2009; **59**: 225-249
- 2 **Yuen MF**, Hou JL, Chutaputti A. Hepatocellular carcinoma in the Asia pacific region. *J Gastroenterol Hepatol* 2009; **24**: 346-353
- 3 **El-Serag HB**, Rudolph KL. Hepatocellular carcinoma: epidemiology and molecular carcinogenesis. *Gastroenterology* 2007; **132**: 2557-2576
- 4 **Chung H**, Kudo M, Takahashi S, Hagiwara S, Sakaguchi Y, Inoue T, Minami Y, Ueshima K, Fukunaga T. Review of current staging systems for hepatocellular carcinoma. *Hepatol Res* 2007; **37** Suppl 2: S210-S215
- 5 **Okuda K**, Ohtsuki T, Obata H, Tomimatsu M, Okazaki N, Hasegawa H, Nakajima Y, Ohnishi K. Natural history of hepatocellular carcinoma and prognosis in relation to treatment. Study of 850 patients. *Cancer* 1985; **56**: 918-928
- 6 **Edge SB**, Byrd DR, Compton CC, Fritz AG, Greene FL, Trotti A, editors. AJCC cancer staging manual. 7th ed. New York, NY: Springer, 2010: 237-246
- 7 **Llovet JM**, Bruix J. Prospective validation of the Cancer of the Liver Italian Program (CLIP) score: a new prognostic system for patients with cirrhosis and hepatocellular carcinoma. *Hepatology* 2000; **32**: 679-680
- 8 **Llovet JM**, Brú C, Bruix J. Prognosis of hepatocellular carcinoma: the BCLC staging classification. *Semin Liver Dis* 1999; **19**: 329-338
- 9 **Kudo M**, Chung H, Osaki Y. Prognostic staging system for hepatocellular carcinoma (CLIP score): its value and limitations, and a proposal for a new staging system, the Japan Integrated Staging Score (JIS score). *J Gastroenterol* 2003; **38**: 207-215
- 10 **Tateishi R**, Yoshida H, Shiina S, Imamura H, Hasegawa K, Teratani T, Obi S, Sato S, Koike Y, Fujishima T, Makuuchi M, Omata M. Proposal of a new prognostic model for hepatocellular carcinoma: an analysis of 403 patients. *Gut* 2005; **54**: 419-425
- 11 **Yang BH**, Ren ZG, Tang ZY. The consideration and proposition of the liver cancer staging classification. *Zhonghua Gandan Waike Zazhi* 1999; **5**: 67-68
- 12 **Yan P**, Yan LN. Staging of hepatocellular carcinoma. *Hepatobiliary Pancreat Dis Int* 2003; **2**: 491-495
- 13 **Llovet JM**, Burroughs A, Bruix J. Hepatocellular carcinoma. *Lancet* 2003; **362**: 1907-1917
- 14 **Parkin DM**, Bray F, Ferlay J, Pisani P. Global cancer statistics, 2002. *CA Cancer J Clin* 2005; **55**: 74-108
- 15 **Poon RT**, Fan ST, Tsang FH, Wong J. Locoregional therapies for hepatocellular carcinoma: a critical review from the surgeon's perspective. *Ann Surg* 2002; **235**: 466-486
- 16 **Rougier P**, Mitry E, Barbare JC, Taieb J. Hepatocellular carcinoma (HCC): an update. *Semin Oncol* 2007; **34**: S12-S20
- 17 **Farazi PA**, DePinho RA. Hepatocellular carcinoma pathogenesis: from genes to environment. *Nat Rev Cancer* 2006; **6**: 674-687
- 18 **Chen TW**, Chu CM, Yu JC, Chen CJ, Chan DC, Liu YC, Hsieh CB. Comparison of clinical staging systems in predicting survival of hepatocellular carcinoma patients receiving

- ing major or minor hepatectomy. *Eur J Surg Oncol* 2007; **33**: 480-487
- 19 **Varotti G**, Ramacciato G, Ercolani G, Grazi GL, Vetrone G, Cescon M, Del Gaudio M, Ravaioli M, Ziparo V, Lauro A, Pinna A. Comparison between the fifth and sixth editions of the AJCC/UICC TNM staging systems for hepatocellular carcinoma: multicentric study on 393 cirrhotic resected patients. *Eur J Surg Oncol* 2005; **31**: 760-767
- 20 **Yeh CN**, Chen MF, Lee WC, Jeng LB. Prognostic factors of hepatic resection for hepatocellular carcinoma with cirrhosis: univariate and multivariate analysis. *J Surg Oncol* 2002; **81**: 195-202
- 21 **Leung TW**, Tang AM, Zee B, Lau WY, Lai PB, Leung KL, Lau JT, Yu SC, Johnson PJ. Construction of the Chinese University Prognostic Index for hepatocellular carcinoma and comparison with the TNM staging system, the Okuda staging system, and the Cancer of the Liver Italian Program staging system: a study based on 926 patients. *Cancer* 2002; **94**: 1760-1769
- 22 **Llovet JM**, Bruix J, Fuster J, Castells A, Garcia-Valdecasas JC, Grande L, Franca A, Brú C, Navasa M, Ayuso MC, Solé M, Real MI, Vilana R, Rimola A, Visa J, Rodés J. Liver transplantation for small hepatocellular carcinoma: the tumor-node-metastasis classification does not have prognostic power. *Hepatology* 1998; **27**: 1572-1577
- 23 **Lu W**, Dong J, Huang Z, Guo D, Liu Y, Shi S. Comparison of four current staging systems for Chinese patients with hepatocellular carcinoma undergoing curative resection: Okuda, CLIP, TNM and CUPI. *J Gastroenterol Hepatol* 2008; **23**: 1874-1878

S- Editor Cheng JX L- Editor Wang XL E- Editor Ma WH