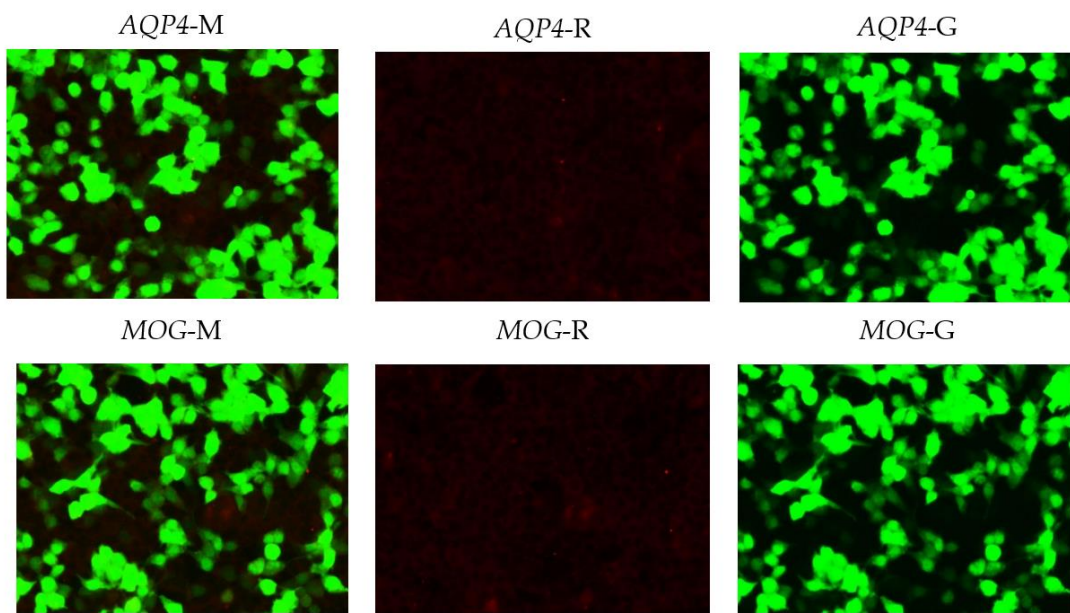


Figure S1 Immunofluorescence: Anti-MuSK, Anti-LRP4 negative *vs* Comparison.



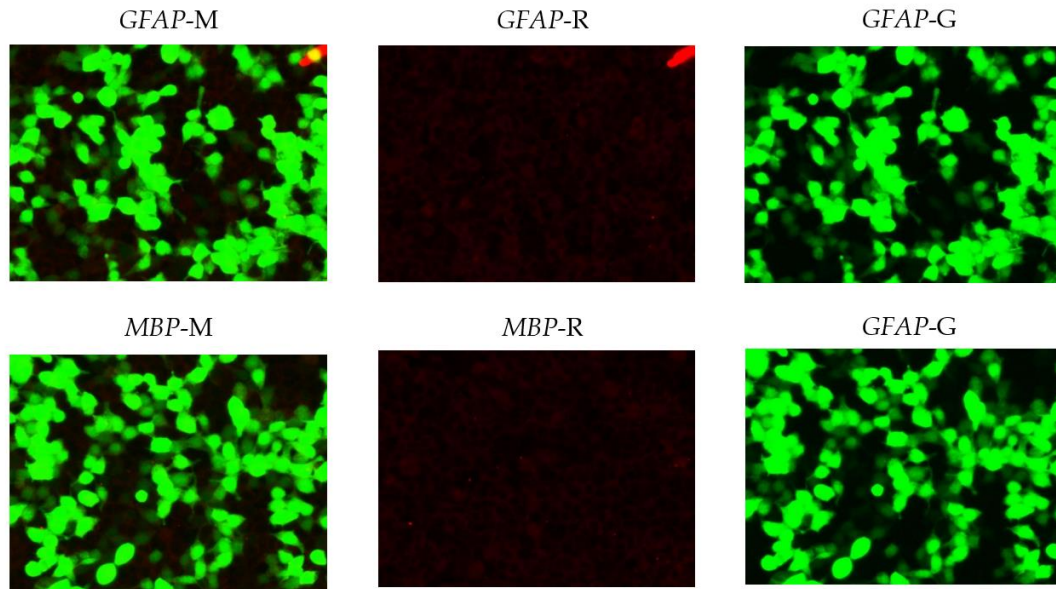


Figure S2 *AQP4-M, AQP4-R, AQP4-G, MOG-M, MOG-R, MOG-G, GFAP-M, GFAP-R, GFAP-G, MBP-M, MBP-R, MBP-G* detection in cerebrospinal fluid by cell transfection-based indirect immunofluorescence.

Supplementary Table S1 Dian diagnostics group, ID: 100414716877

Name	Result	Specimen	Reference interval	Method
Anti-GM1 antibody IgG	(-)	Patient serum	(-)	Western blotting
Anti-GM2 antibody IgG	(-)	Patient serum	(-)	Western blotting
Anti-GM3 antibody IgG	(-)	Patient serum	(-)	Western blotting
Anti-GM4 antibody IgG	(-)	Patient serum	(-)	Western blotting
Anti-GD1a antibody IgG	(-)	Patient serum	(-)	Western blotting
Anti-GD1b antibody IgG	(-)	Patient serum	(-)	Western blotting

Anti-GD2 antibody	(-)	Patient	(-)	Western
IgG		serum		blotting
Anti-GD3 antibody	(-)	Patient	(-)	Western
IgG		serum		blotting
Anti-GT1a antibody	(+)	Patient	(-)	Western
IgG		serum		blotting
Anti-GT1b antibody	(-)	Patient	(-)	Western
IgG		serum		blotting
Anti-GQ1b antibody	(+)	Patient	(-)	Western
IgG		serum		blotting
Anti-sulfatide antibody	(-)	Patient	(-)	Western
IgG		serum		blotting
Anti-GM1 antibody	(-)	Patient	(-)	Western
IgM		serum		blotting
Anti-GM2 antibody	(-)	Patient	(-)	Western
IgM		serum		blotting
Anti-GM3 antibody	(-)	Patient	(-)	Western
IgM		serum		blotting
Anti-GM4 antibody	(-)	Patient	(-)	Western
IgM		serum		blotting
Anti-GD1a antibody	(-)	Patient	(-)	Western
IgM		serum		blotting
Anti-GD1b antibody	(-)	Patient	(-)	Western
IgM		serum		blotting
Anti-GD2 antibody	(-)	Patient	(-)	Western
IgM		serum		blotting
Anti-GD3 antibody	(-)	Patient	(-)	Western
IgM		serum		blotting
Anti-GT1a antibody	(-)	Patient	(-)	Western

IgM		serum		blotting
Anti-GT1b antibody	(-)	Patient	(-)	Western
IgM		serum		blotting
Anti-GQ1b antibody	(-)	Patient	(-)	Western
IgM		serum		blotting
Anti-sulfatide antibody	(-)	Patient	(-)	Western
IgM		serum		blotting

Supplementary Table S2 Dian diagnostics group, ID: 100414716878

Name	Result (nmol/L)	Specimen	Reference interval	Method
Anti-AChR	< 0.45 nmol/L	Patient Serum	< 0.45	ELISA
Anti-MuSK antibody	(-)	Patient Serum	(-)	Immunofluorescence, CBA
Anti-LRP4 antibody	(-)	Patient Serum	(-)	Immunofluorescence, CBA
Anti-SOX1 antibody	(-)	Patient Serum	(-)	Western blotting
Anti-STititin antibody	(-)	Patient Serum	(-)	Western blotting

Supplementary Table S3 Dian diagnostics group, ID: 100414737805

Name	Result (nmol/L)	Specimen	Reference interval	Method
Anti-AQP4 antibody	(-)	Patient serum	(-)	CBA
IgG				
Anti-MOG antibody	(-)	Patient serum	(-)	CBA
IgG				

Anti- <i>GFAP</i> antibody (-)	Patient serum (-)	CBA
IgG		
Anti- <i>MBP</i> antibody (-)	Patient serum (-)	CBA
IgG		
