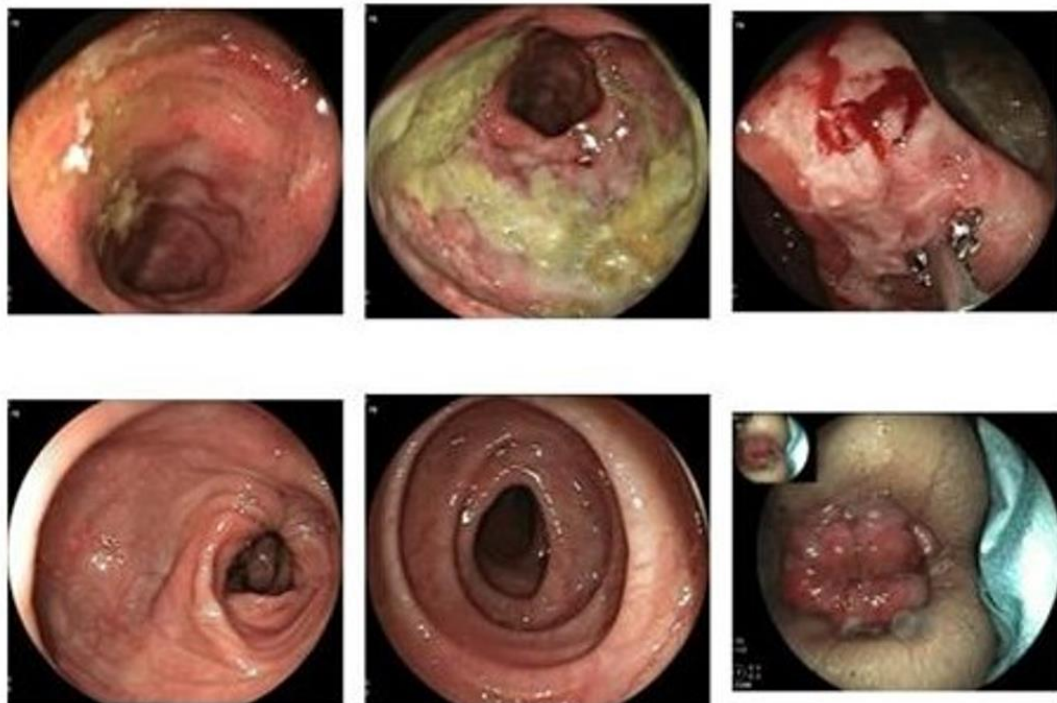


Supplementary Figure 1 Gastroenteroscopy of a patient with an aggressive lymphoma of the primary small intestine. The mucous membrane was rough and densely covered with granular and nodular eminence a pathological diagnosis of monomorphic epitheliophilic intestinal T-cell lymphoma was made.



Supplementary Figure 2 Colonoscopy of a patient with primary intestinal aggressive lymphoma. The terminal ileum and ileocecal part were obviously deformed, and the surface of the ileocecal part showed congestive degeneration

and huge ulcer. The pathological diagnosis was diffuse large B-cell lymphoma.