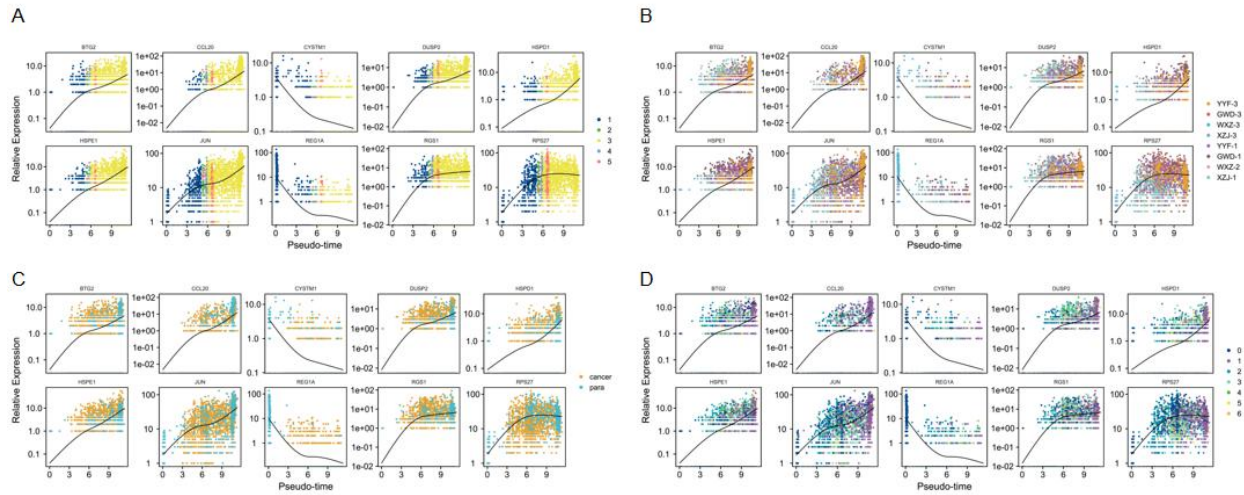
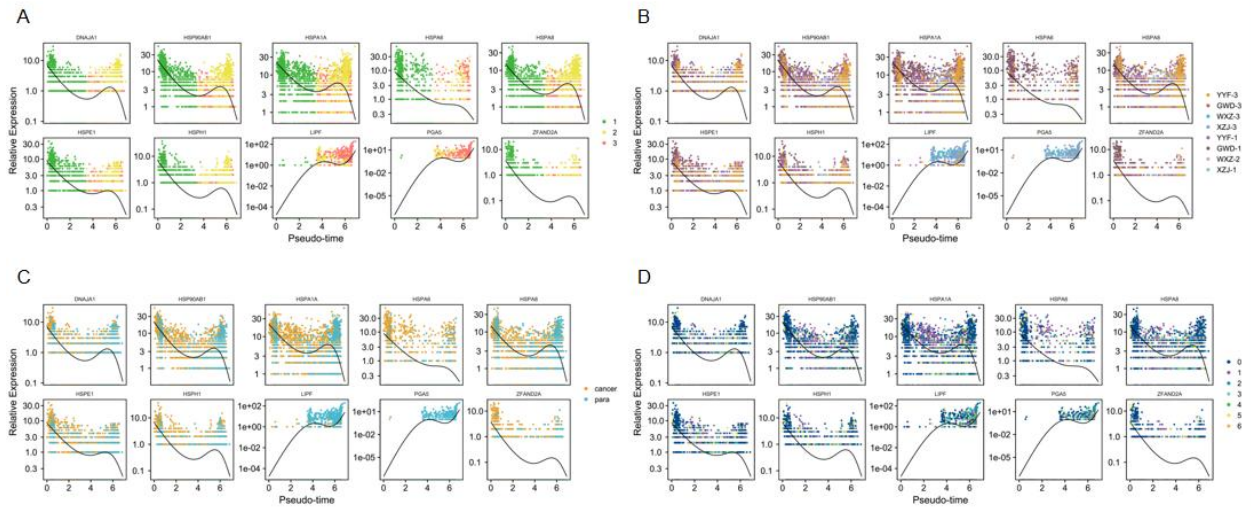


**Supplementary Figure 1. T cell analysis.** A. UMAP plot of cell clusters, with cell clusters on the left and cell types on the right; B. Distribution of CD4 T cell subsets based on the T cells and CD4 T marker gene expression; C. Distribution of CD8 T cell subsets identified by the T cells and CD8 T marker gene expression. UMAP, Uniform Manifold Approximation and Projection.



**Supplementary Figure 2 Top 10 differentially expressed genes in CD4 T cell branches**  
 A–D: Trajectory diagrams of the top 10 DEG expression levels with pseudo-time line of differentiation (A), tissue samples at distinct stages (B), cancerous and paracancerous (C), and CD4T cell subsets (D). DEG, differentially expressed gene.



**Supplementary Figure 3. Top 10 differentially expressed genes in the CD8 T cell branches**

A. Trajectory diagrams of DEG expression in the TOP10 clusters with quasi-timeline of differentiation (A), cancerous tissues at varying stages (B), cancerous and paracancerous tissues (C), and CD8 T subsets (D). DEG, differentially expressed gene.