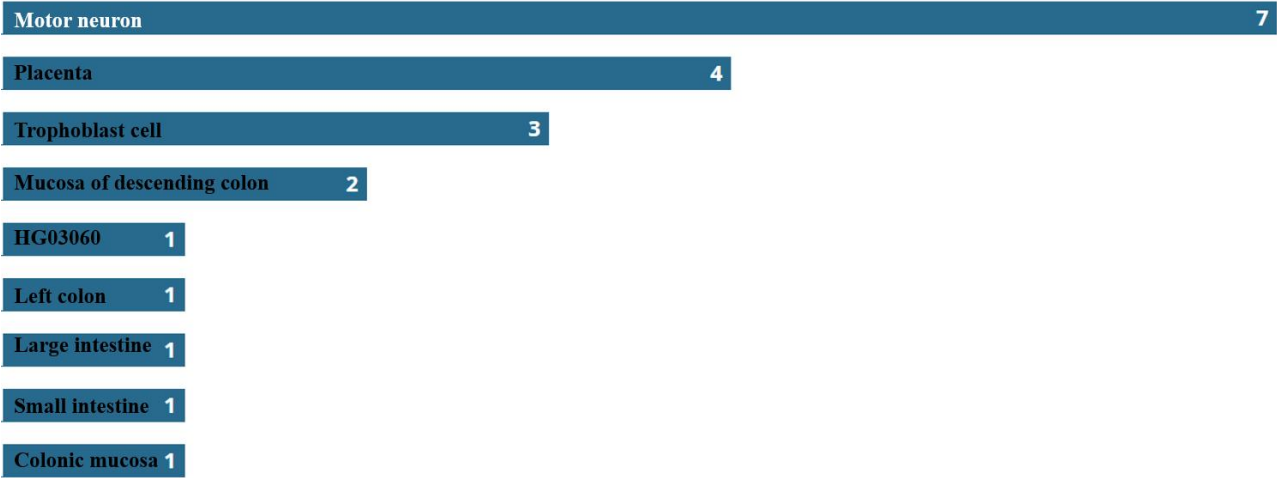
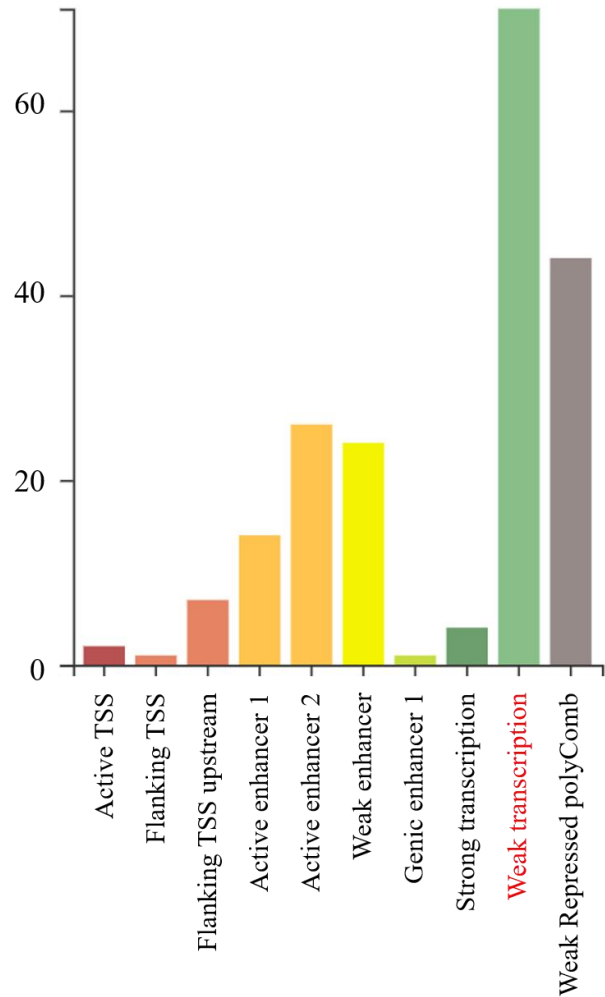


Chromatin accessibility

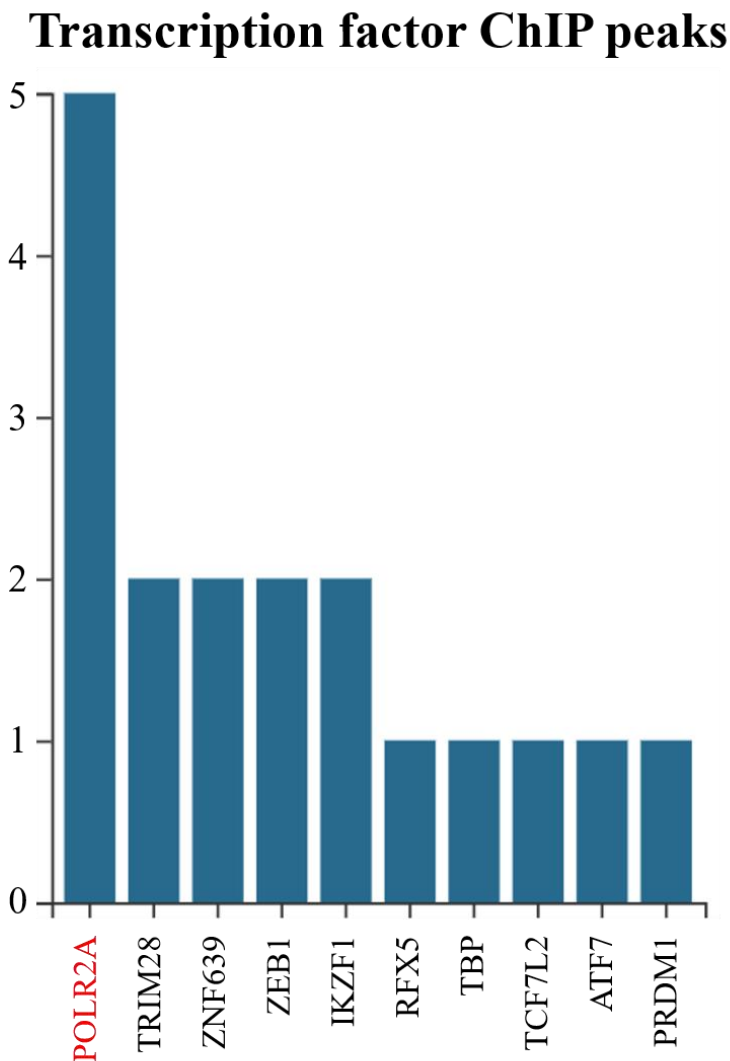


Supplementary Figure 1 The number of times the rs372369000 was found to be within peaks called from chromatin accessibility assays using each biosample in ENCODE.

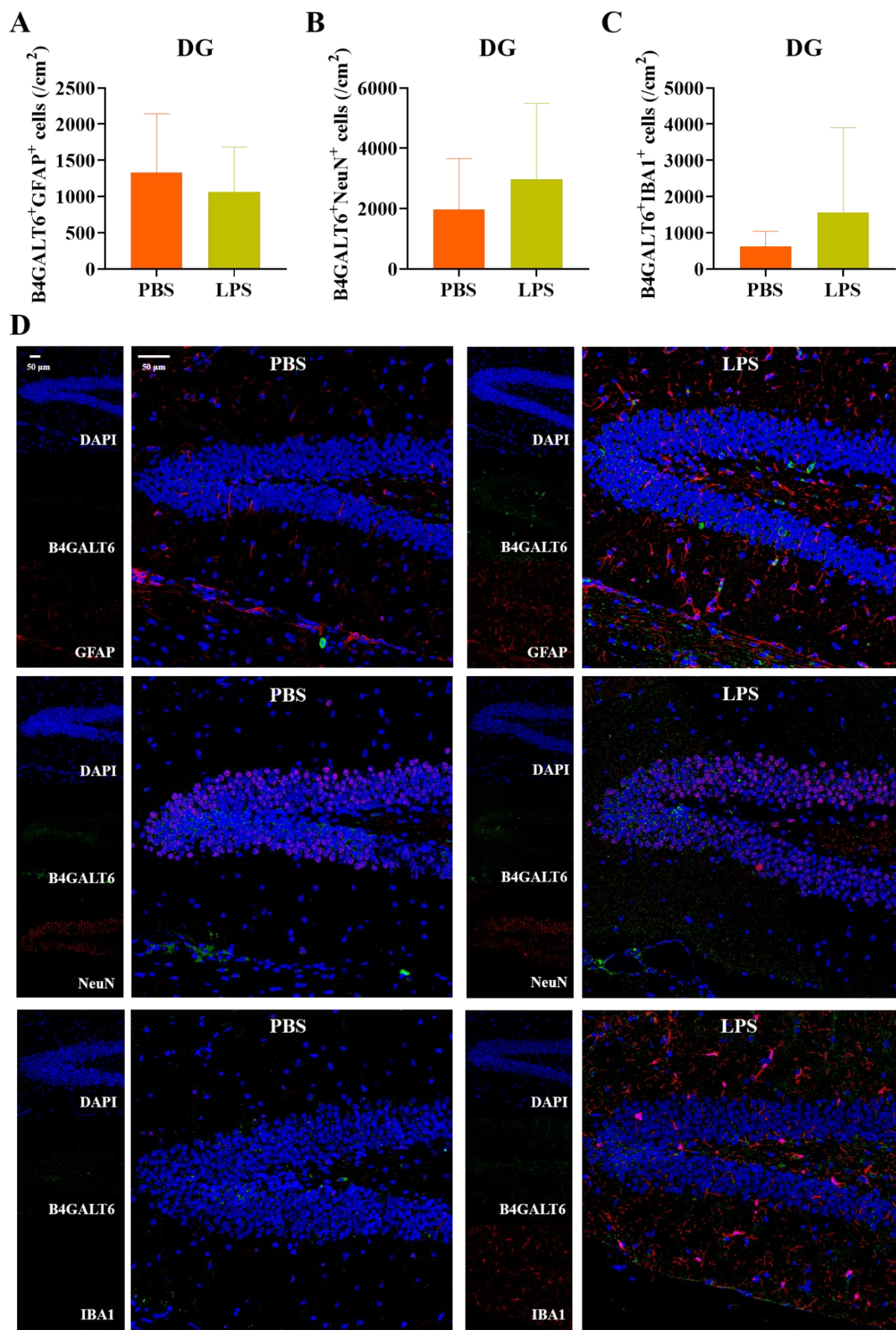
Chromatin state



Supplementary Figure 2 ENCODE chromatin states analysis showed that the main function of rs372369000 was to weaken transcription.

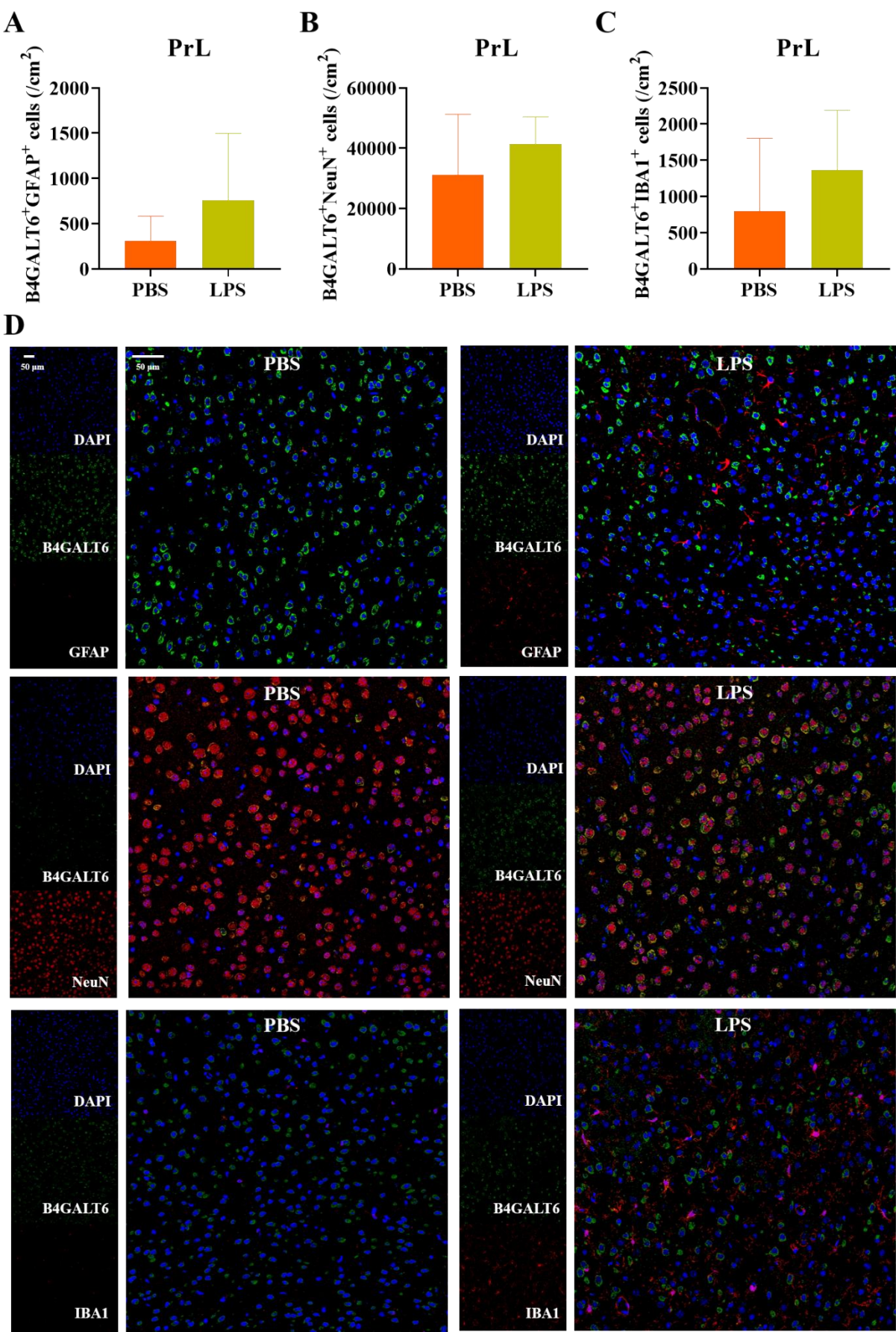


Supplementary Figure 3 The number of biosamples where the same TF target was found to be having a peak signal that contained the rs372369000 region.

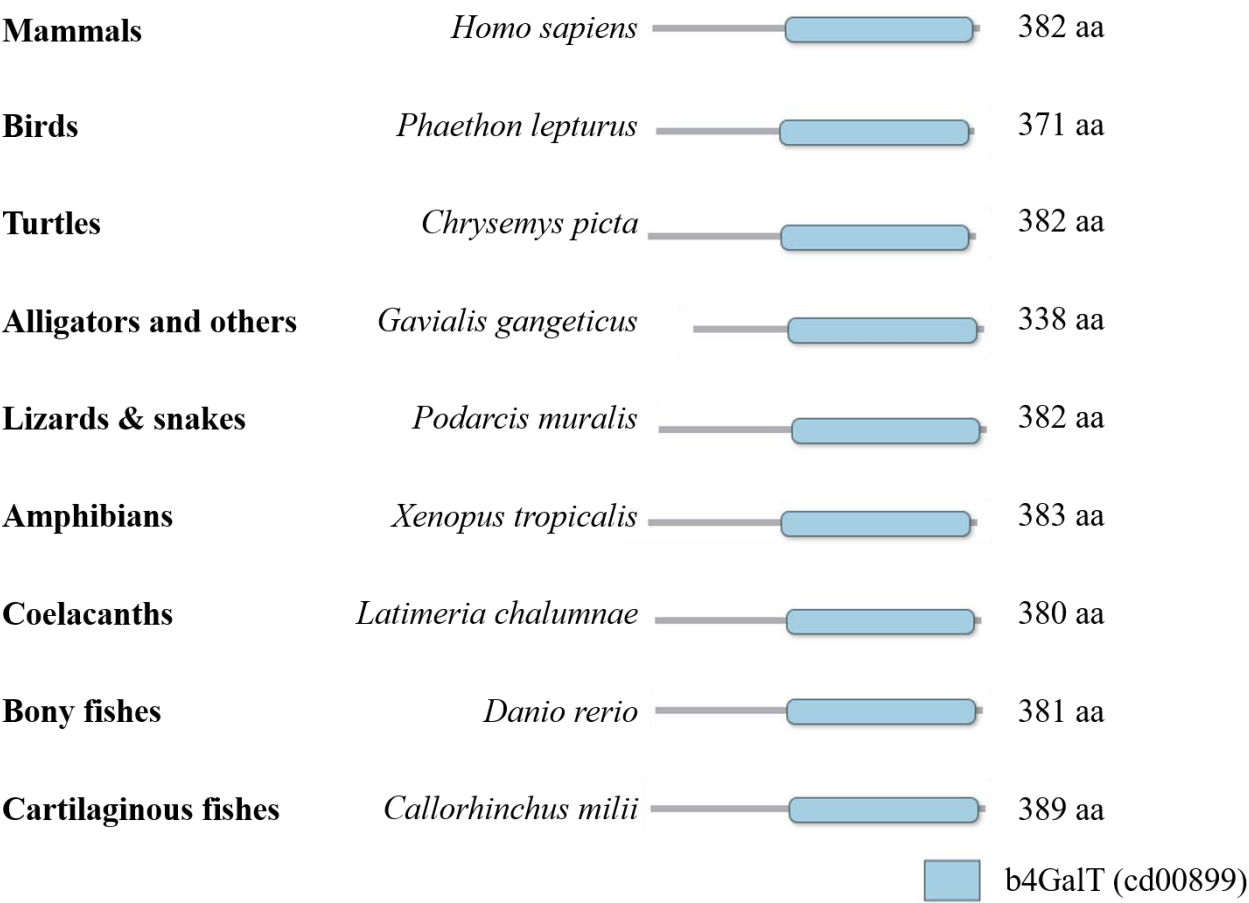


Supplementary Figure 4 No statistically significant difference was observed in cell

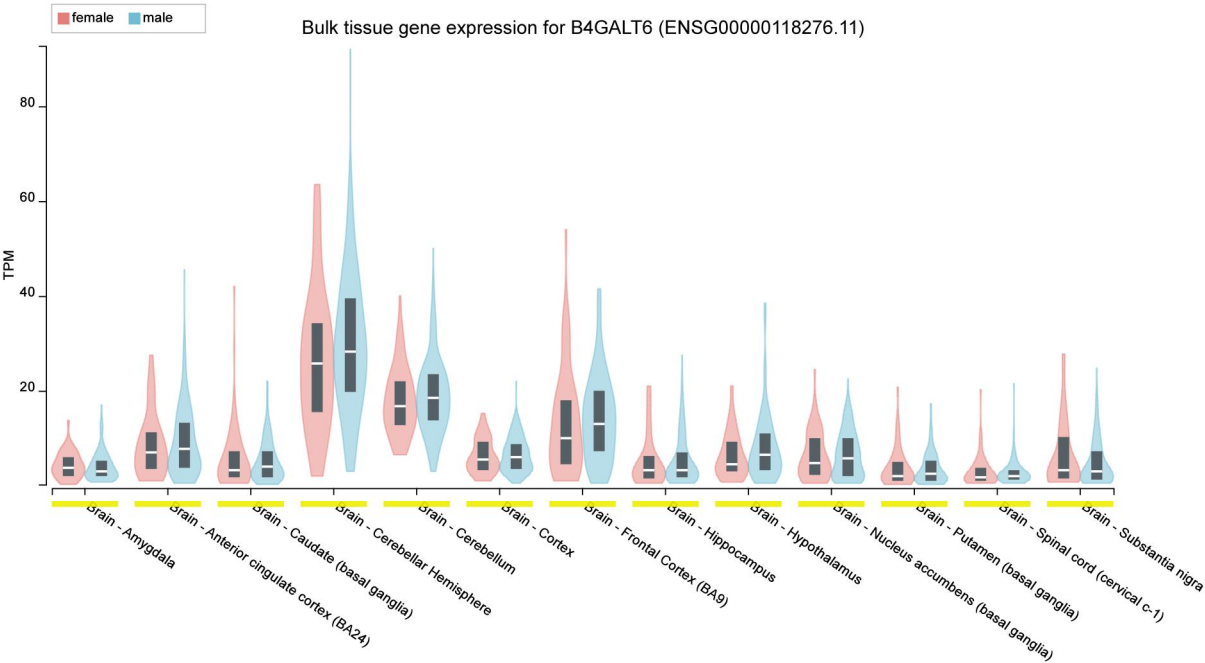
subtypes between the PBS and LPS groups in the dentate gyrus of the hippocampus.



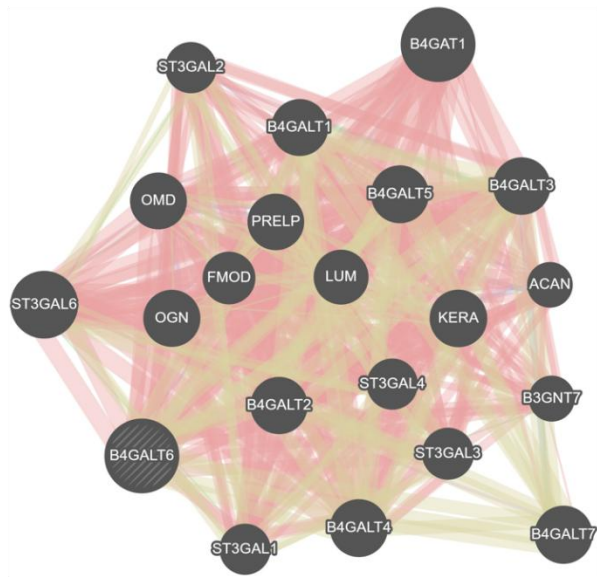
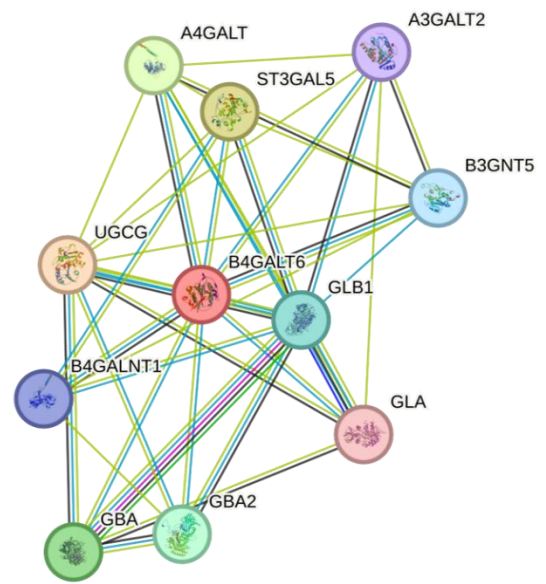
Supplementary Figure 5 No statistically significant difference was observed in cell subtypes between the PBS and LPS groups in the PrL brain region.



Supplementary Figure 6 B4GALT6 was conserved across jawed vertebrates.



Supplementary Figure 7 B4GALT6 widely expressed in the brain tissue.

A**B**

Supplementary Figure 8 Gene and protein function prediction tools GeneMANIA and STRING predict the function of B4GALT6.