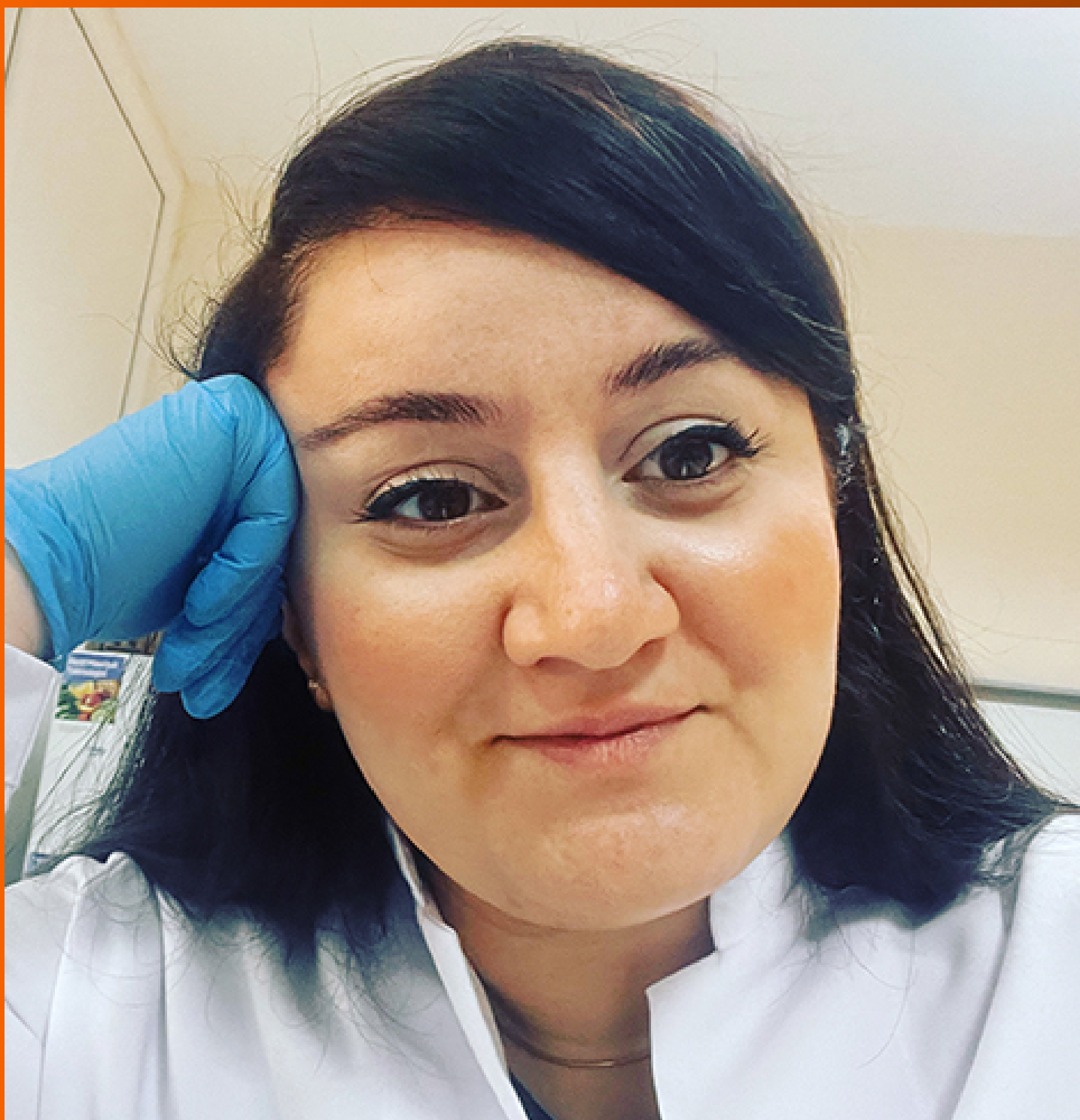


# World Journal of *Clinical Cases*

*World J Clin Cases* 2024 October 16; 12(29): 6250-6334



**EDITORIAL**

- 6250 Post competency training in standardized training of resident physicians and integrated postgraduates  
*Zeng Y, Yang J, Zhang JW*
- 6255 Solid pancreatic masses: What's hidden beneath? Insights into rare pancreatic lesions  
*Balaban DV*
- 6258 Medical imaging for the diagnosis, recurrence and metastasis evaluation of clear cell sarcoma  
*Wang WJ, Wang X, Hui DM, Feng JB, Li CM*
- 6262 Metastatic clear cell sarcoma of the pancreas: An overview  
*Ait Addi R*
- 6266 Advancing the predictive accuracy of PNTML in rectal prolapse: An ongoing quest  
*Meng J, Wang ZG, Zhang LM, Chen DY, Wang Y, Bai HX, Ji CC, Liu DL, Zhao XF, Liu Y, Li BY, Wang L, Wang TF, Yu WG, Yin ZT*
- 6271 Challenges in integrating traditional Chinese medicine and gut microbiota research for insomnia treatment  
*Bilal M, Nashwan AJ*

**ORIGINAL ARTICLE****Observational Study**

- 6275 Quran memorisation and heart rate variability: How do they correlate?  
*Ghazali AR, Abd Warif NM, A Yazit NA, Juliana N, Ishak I, Ibrahim FW, Mat Ludin AF, Harun D, Abd Rahman S, Che Wan Mohd Rozali WNA*

**SYSTEMATIC REVIEWS**

- 6285 Spectrum of delayed post-hypoxic leukoencephalopathy syndrome: A systematic review  
*Srichawla BS, Garcia-Dominguez MA*

**CASE REPORT**

- 6302 Recurrent acute pancreatitis as an initial presentation of primary hyperparathyroidism: A case report  
*Karim MM, Raza H, Parkash O*
- 6307 Combination treatment with telitacicept, mycophenolate mofetil and glucocorticoids for immunoglobulin A nephropathy: A case report  
*Shen Y, Yuan J, Chen S, Zhang YF, Yin L, Hong Q, Zha Y*
- 6314 Ruptured venous aneurysm associated with a dural arteriovenous fistula: Two case reports  
*Kim YS, Yoon W, Baek BH, Kim SK, Joo SP, Kim TS*

- 6320** Novel procedure for hepatic venous outflow block after liver resection: A case report  
*Higashi H, Abe Y, Abe K, Nakano Y, Tanaka M, Hori S, Hasegawa Y, Yagi H, Kitago M, Kitagawa Y*
- 6327** Comprehensive interventions for adult cyclic vomiting syndrome complicated by superior mesenteric artery syndrome: A case report  
*Liu B, Sun H, Liu Y, Yuan ML, Zhu HR, Zhang W*

**ABOUT COVER**

Peer Reviewer of *World Journal of Clinical Cases*, Ayse Kocak, PhD, Affiliate Associate Professor, Department of Molecular Medicine, Dokuz Eylül University Faculty of Medicine, Izmir 000, Türkiye. kocak.ayse@gmail.com

**AIMS AND SCOPE**

The primary aim of *World Journal of Clinical Cases* (*WJCC*, *World J Clin Cases*) is to provide scholars and readers from various fields of clinical medicine with a platform to publish high-quality clinical research articles and communicate their research findings online.

*WJCC* mainly publishes articles reporting research results and findings obtained in the field of clinical medicine and covering a wide range of topics, including case control studies, retrospective cohort studies, retrospective studies, clinical trials studies, observational studies, prospective studies, randomized controlled trials, randomized clinical trials, systematic reviews, meta-analysis, and case reports.

**INDEXING/ABSTRACTING**

The *WJCC* is now abstracted and indexed in PubMed, PubMed Central, *Reference Citation Analysis*, China Science and Technology Journal Database, and Superstar Journals Database. The 2024 Edition of Journal Citation Reports® cites the 2023 journal impact factor (JIF) for *WJCC* as 1.0; JIF without journal self cites: 0.9; 5-year JIF: 1.1; JIF Rank: 168/325 in medicine, general and internal; JIF Quartile: Q3; and 5-year JIF Quartile: Q3.

**RESPONSIBLE EDITORS FOR THIS ISSUE**

Production Editor: Xiang-Di Zhang.; Production Department Director: Xiang Li; Cover Editor: Jin-Li Wang.

**NAME OF JOURNAL**

*World Journal of Clinical Cases*

**ISSN**

ISSN 2307-8960 (online)

**LAUNCH DATE**

April 16, 2013

**FREQUENCY**

Thrice Monthly

**EDITORS-IN-CHIEF**

Jerzy Tadeusz Chudek, George Kontogeorgos, Maurizio Serati, Bao-Gan Peng, Salim Surani

**EDITORIAL BOARD MEMBERS**

<https://www.wjgnet.com/2307-8960/editorialboard.htm>

**PUBLICATION DATE**

October 16, 2024

**COPYRIGHT**

© 2024 Baishideng Publishing Group Inc

**INSTRUCTIONS TO AUTHORS**

<https://www.wjgnet.com/bpg/gerinfo/204>

**GUIDELINES FOR ETHICS DOCUMENTS**

<https://www.wjgnet.com/bpg/GerInfo/287>

**GUIDELINES FOR NON-NATIVE SPEAKERS OF ENGLISH**

<https://www.wjgnet.com/bpg/gerinfo/240>

**PUBLICATION ETHICS**

<https://www.wjgnet.com/bpg/GerInfo/288>

**PUBLICATION MISCONDUCT**

<https://www.wjgnet.com/bpg/gerinfo/208>

**ARTICLE PROCESSING CHARGE**

<https://www.wjgnet.com/bpg/gerinfo/242>

**STEPS FOR SUBMITTING MANUSCRIPTS**

<https://www.wjgnet.com/bpg/GerInfo/239>

**ONLINE SUBMISSION**

<https://www.f6publishing.com>

## Advancing the predictive accuracy of PNTML in rectal prolapse: An ongoing quest

Jin Meng, Zhi-Gang Wang, Li-Mei Zhang, De-Yu Chen, Ying Wang, Hai-Xia Bai, Cheng-Chun Ji, De-Long Liu, Xiao-Fei Zhao, Yuan Liu, Bo-Yang Li, Lei Wang, Tian-Fu Wang, Wei-Gang Yu, Zhi-Tao Yin

**Specialty type:** Medicine, research and experimental

**Provenance and peer review:**

Invited article; Externally peer reviewed.

**Peer-review model:** Single blind

**Peer-review report's classification**

**Scientific Quality:** Grade D

**Novelty:** Grade C

**Creativity or Innovation:** Grade C

**Scientific Significance:** Grade C

**P-Reviewer:** Mohey NM

**Received:** May 25, 2024

**Revised:** June 28, 2024

**Accepted:** July 10, 2024

**Published online:** October 16, 2024

**Processing time:** 93 Days and 21 Hours



**Jin Meng, Zhi-Gang Wang, De-Yu Chen, Hai-Xia Bai, Cheng-Chun Ji, De-Long Liu, Xiao-Fei Zhao, Yuan Liu, Bo-Yang Li, Lei Wang, Tian-Fu Wang, Wei-Gang Yu, Zhi-Tao Yin**, Department of Anorectal Disease, Shenyang Coloproctology Hospital, Shenyang 110000, Liaoning Province, China

**Li-Mei Zhang**, Department of Neurology, Central Hospital of Dalian University of Technology, Dalian 116001, Liaoning Province, China

**Ying Wang**, Department of Acupuncture and Tuina college, Liaoning University of Traditional Chinese Medicine, Shenyang 110032, Liaoning Province, China

**Corresponding author:** Zhi-Tao Yin, MM, Chief Doctor, Department of Anorectal Disease, Shenyang Coloproctology Hospital, No. 9 Nanjing North Street, Shenyang 110000, Liaoning Province, China. [yinzitao@163.com](mailto:yinzitao@163.com)

### Abstract

Fecal incontinence is a common symptom among patients with rectal prolapse. Pudendal nerve terminal motor latency (PNTML) testing can serve as a reference indicator for predicting the outcomes of rectal prolapse surgery, thereby assisting surgeons in formulating more appropriate surgical plans. The direct correlation between preoperative PNTML testing results and postoperative fecal incontinence in patients with rectal prolapse remains a contentious issue, necessitating further clarification. Thus, we analyze the existing publications from both clinical and statistical perspectives to comprehensively evaluate the accuracy of preoperative PNTML testing in rectal prolapse and provide some feasible statistical solutions.

**Key Words:** Rectal prolapse; Fecal incontinence; Anal manometry; Pudendal nerve terminal motor latency; Diagnosis; Surgical procedures

©The Author(s) 2024. Published by Baishideng Publishing Group Inc. All rights reserved.

**Core Tip:** Precise diagnostic planning would help in choosing the most appropriate surgical procedure, which would help achieve better outcomes. We will comprehensively evaluate literatures on pudendal nerve terminal motor latency from both clinical and statistical perspectives and provide viable statistical solutions.

**Citation:** Meng J, Wang ZG, Zhang LM, Chen DY, Wang Y, Bai HX, Ji CC, Liu DL, Zhao XF, Liu Y, Li BY, Wang L, Wang TF, Yu WG, Yin ZT. Advancing the predictive accuracy of PNTML in rectal prolapse: An ongoing quest. *World J Clin Cases* 2024; 12(29): 6266-6270

**URL:** <https://www.wjgnet.com/2307-8960/full/v12/i29/6266.htm>

**DOI:** <https://dx.doi.org/10.12998/wjcc.v12.i29.6266>

## INTRODUCTION

Rectal prolapse is a circumferential, full-thickness prolapse of the rectum through the anus. It primarily presents as a partial or complete protrusion of the rectal wall accompanied by pelvic floor dysfunction, which often leads to symptoms such as anal mucus exudation, bleeding, incontinence, and constipation, thereby affecting the quality of life of patients. Fecal incontinence is a common symptom among patients with rectal prolapse, with approximately 50% to 75% of individuals diagnosed with rectal prolapse also experiencing this condition[1].

Pudendal nerve terminal motor latency (PNTML) testing is an electrophysiological method used to evaluate the function of the pudendal nerve, which is crucial for controlling the external anal sphincter. This assessment measures the time it takes for the external anal sphincter to contract in response to stimulation of the pudendal nerve, thereby evaluating the functional status of the nerve and the anal sphincter. A prolonged PNTML, with a normal value being  $2.0 \text{ ms} \pm 0.2 \text{ ms}$ , is typically indicative of pudendal nerve damage and may predict the risk of postoperative fecal incontinence, providing a basis for the selection of surgical procedures[2,3]. If the pudendal nerve is not damaged preoperatively and fecal incontinence is merely a secondary symptom caused by chronic dilation of the external anal sphincter due to rectal prolapse, the patient's postoperative symptoms of fecal incontinence are likely to improve. Therefore, PNTML testing can serve as a reference indicator for assessing the pelvic nerve function in patients with fecal incontinence, and has significant clinical importance for predicting the outcomes of rectal prolapse surgery, thereby assisting surgeons in formulating more appropriate surgical plans.

Oruc and Erol[4] have published a review on the current diagnostic methods, additional treatment modalities, and controversial issues concerning the surgical techniques for rectal prolapse. It is crucial that differential diagnoses be ruled out, as this is essential for selecting a tailored surgical procedure. Precise preoperative planning would help in choosing the correct management of patients, which would facilitate better outcomes. However, the clinical value of preoperative PNTML in patients with rectal prolapse has not been explored.

The direct correlation between preoperative PNTML testing results and postoperative fecal incontinence in patients with rectal prolapse remains a contentious issue, necessitating further clarification. As a peer-reviewer for the *World Journal of Clinical Cases*, I will analyze existing literature from both clinical and statistical perspectives to comprehensively evaluate the accuracy of preoperative PNTML testing for rectal prolapse. Furthermore, I will explore the relationship between preoperative PNTML abnormalities and postoperative fecal incontinence, and identify potential improvements for future clinical research protocols.

Birnbaum *et al*[5] conducted a prospective evaluation of preoperative anorectal manometry and PNTML in 24 patients with full-thickness rectal prolapse and an average age of 59 years (range from 32 years to 76 years). PNTML testing was performed preoperatively on 12 of these patients, followed by an average postoperative follow-up of 25 months. The study findings indicate that among 3 patients with prolonged PNTML preoperatively, none returned to normal fecal continence postoperatively. No correlation was found between preoperative low resting pressure or low squeeze pressure and postoperative outcomes. Due to the limited sample size (12 preoperative PNTML assessments), the results of this study may not fully represent the true situation of the target population. Consequently, the accuracy and generalizability (external validity) of the study findings are subject to certain limitations.

Johansen *et al*[6] carried out a study involving 20 elderly patients with a mean age of 82 years (range from 68 years to 101 years) who underwent PNTML testing prior to surgery, with an average follow-up period of 26 months. The study revealed that four patients exhibited significant preoperative prolonged PNTML. However, of these patients, 3 who had severe fecal incontinence preoperatively improved to moderate fecal incontinence postoperatively. Based on these findings, the authors concluded that prolonged preoperative PNTML does not accurately predict postoperative fecal incontinence. Rectal prolapse varies in severity and classification, ranging from mild mucosal intussusception to severe full-thickness rectal prolapse. Consequently, different classifications may necessitate distinct predictive models.

In the study by Schultz *et al*[7], a cohort of 43 patients was stratified into two distinct groups according to their diagnoses: 26 patients presented with rectal prolapse, while 17 exhibited internal rectal intussusception. Each group was assessed separately with an average follow-up period of 4.5 years (range from 0.5 years to 9.5 years). The study demonstrated that even among some patients with bilaterally prolonged PNTML, postoperative symptoms of fecal incontinence improved. No correlation was found between PNTML and preoperative or postoperative fecal incontinence in either group of patients with different types of conditions. No significant correlation was identified between PNTML and fecal incontinence in the preoperative and postoperative periods across both patient groups.

In research led by Glasgow *et al*[8], an investigation involving a total of 106 patients was undertaken. Within this cohort, 45 individuals were subjected to preoperative assessments, which included anorectal manometry and PNTML. The average follow-up period was 44 months. The study findings indicated that patients with a maximum squeeze pressure greater than 60 mmHg experienced significantly improved outcomes. Pudendal nerve dysfunction and mean resting pressure were not predictive of postoperative fecal incontinence.

Currently, based on the existing literature, there is a lack of high level data from evidence-based medicine to support the clinical predictive value of PNTML testing in rectal prolapse.

---

## INSUFFICIENT SAMPLE SIZE

---

In statistics, the magnitude of the sample size plays a pivotal role in the reliability of clinical case analysis outcomes. A small sample size can lead to false-positive results due to chance, even with highly specific tests, causing unnecessary concern and further medical intervention. Moreover, if there is bias in patient selection, the generalizability of the results will be questioned[9]. The aforementioned studies were limited by a small sample size (Table 1). To more accurately assess the reliability of test results, it is recommended that in future research the sample size should be expanded and large-scale, multicenter, prospective studies conducted to enhance the reliability and external validity of the research conclusions. Concurrently, more rigorous statistical methods should be employed to conduct an in-depth analysis of existing data, thereby enhancing the validity of the study outcomes.

---

## INDIVIDUAL DIFFERENCES IN AGE

---

As demonstrated in Table 1, there is a wide range of patient ages, necessitating consideration of the impact of age variability on data outcomes. Studies by Lefaucheur *et al*[10] have shown that PNTML values are influenced by age, suggesting the need to account for age-related factors and to establish age-stratified reference values during assessment. When designing future research and constructing statistical models, the potential influence of age span on study outcomes should be taken into account, with age incorporated as a significant covariate within the model. Subsequent studies should further analyze the trend of PNTML values in relation to age, to determine whether there is a linear or nonlinear relationship. When applying research findings to clinical practice, the specific needs and responses of patients across different age groups should be considered, thereby enabling the provision of personalized healthcare for patients of varying ages.

---

## DIFFERENT SURGICAL INTERVENTIONS

---

Surgical intervention is a conventional approach for the treatment of rectal prolapse, yet the selection of surgical methods remains a contentious issue[11,12]. The choice of surgical technique may influence the development of fecal incontinence and the predictive outcomes of the PNTML model.

---

## DIAGNOSTIC CRITERIA

---

Utilizing internationally recognized and standardized criteria for the diagnosis of fecal incontinence ensures the consistency of assessment outcomes.

---

## STAGES OF RECTAL PROLAPSE

---

To effectively mitigate the impact of rectal prolapse classification on statistical outcomes and enhance the quality and credibility of research, it is essential to adopt a unified international classification system for rectal prolapse[11]. By refining the inclusion and exclusion criteria and conducting subgroup analyses based on specific stages of the disease, the predictive value of PNTML for patients in different stages can be assessed. This approach ensures the homogeneity of the study and helps determine which rectal prolapse patients are suitable for PNTML testing, as well as identifying potential limitations or situations where it may not be applicable.

---

## CONCLUSION

---

PNTML testing plays a significant role in the preoperative assessment of rectal prolapse, yet its specific clinical utility may require further validation through additional scientific research. Future studies should involve multicenter, large-scale, prospective designs. Integrating knowledge from experts in various fields and enhancing interdisciplinary collab-

**Table 1 Results of preoperative pudendal nerve terminal motor latency follow-up**

Patients	Age (years)	Months	Surgical procedures	Stage	PNTML	Diagnostic criteria	Ref.
24	59 (32-76)	25	Low anterior resection and retrorectal sacral fixation	Full thickness	Preoperative PNTML in 3 patients was related to postoperative incontinence	Grade 2: Uncontrollable liquid stool; grade 3: Uncontrollable solid stool	[5]
20	82 (68-101)	26	Perineal rectosigmoidectomy and coloanal anastomosis	Full thickness	NS	19-23 score: Severe incontinence; 24 score: Total incontinence	[6]
43	53 (18-84)	54	Rectopexy	–	NS	Grade 1: Incontinence of gas only; grade 2: Incontinence of feces ≤ 1/week; grade 3: Incontinence of feces > 1/week	[7]
106	68.4 (30-90)	44	Perineal proctectomy	Full thickness	NS	Grade 2: Uncontrollable liquid stool; grade 3: Uncontrollable solid stool	[8]

PNTML: Pudendal nerve terminal motor latency; NS: Non-significant.

oration will improve the accuracy and practicality of the model. Ultimately, by synthesizing these approaches and through ongoing research, the controversies surrounding the predictive efficacy of PNTML in rectal prolapse can be progressively addressed, providing the clinic with more precise prognostic tools. With advancements in medical technology and deepening research, PNTML testing is anticipated to play an increasingly vital role in the personalized treatment of rectal prolapse.

## FOOTNOTES

**Author contributions:** Yin ZT designed the study; Meng J wrote the paper; Wang ZG, Zhang LM, Chen DY, Wang Y, Bai HX, Ji CC, Liu DL, Zhao XF, Liu Y, Li BY, Wang L, Wang TF, and Yu WG collated the literature; all authors read and approved the final manuscript.

**Supported by** The Shenyang Science and Technology Plan Project of 2022, No. 22-321-33-79; The Shenyang Science and Technology Plan Project of 2023, No. 23-408-3-01; and The Natural Science Foundation of Liaoning Province, No. 2022-MS-435.

**Conflict-of-interest statement:** The authors declare that they have no conflict of interest.

**Open-Access:** This article is an open-access article that was selected by an in-house editor and fully peer-reviewed by external reviewers. It is distributed in accordance with the Creative Commons Attribution NonCommercial (CC BY-NC 4.0) license, which permits others to distribute, remix, adapt, build upon this work non-commercially, and license their derivative works on different terms, provided the original work is properly cited and the use is non-commercial. See: <https://creativecommons.org/licenses/by-nc/4.0/>

**Country of origin:** China

**ORCID number:** Jin Meng 0000-0002-5052-7834; Zhi-Gang Wang 0000-0002-1543-3779; Li-Mei Zhang 0009-0007-5563-2135; De-Yu Chen 0000-0002-4651-4280; Ying Wang 0000-0003-2876-3096; Hai-Xia Bai 0009-0005-6604-6065; Cheng-Chun Ji 0009-0009-2735-7134; De-Long Liu 0009-0008-5212-2399; Xiao-Fei Zhao 0009-0009-9352-9248; Yuan Liu 0009-0008-0808-4970; Bo-Yang Li 0009-0007-9718-7228; Lei Wang 0000-0002-9847-5885; Tian-Fu Wang 0009-0007-2618-1478; Wei-Gang Yu 0000-0003-3544-5889; Zhi-Tao Yin 0000-0001-9008-345X.

**S-Editor:** Luo ML

**L-Editor:** A

**P-Editor:** Che XX

## REFERENCES

- Bordeianou L, Paquette I, Johnson E, Holubar SD, Gaertner W, Feingold DL, Steele SR. Clinical Practice Guidelines for the Treatment of Rectal Prolapse. *Dis Colon Rectum* 2017; **60**: 1121-1131 [PMID: 28991074 DOI: 10.1097/DCR.0000000000000889]
- Jorge JM, Wexner SD. Etiology and management of fecal incontinence. *Dis Colon Rectum* 1993; **36**: 77-97 [PMID: 8416784 DOI: 10.1007/BF02050307]
- Wexner SD, Marchetti F, Salanga VD, Corredor C, Jagelman DG. Neurophysiologic assessment of the anal sphincters. *Dis Colon Rectum* 1991; **34**: 606-612 [PMID: 2055146 DOI: 10.1007/BF02049902]
- Oruc M, Erol T. Current diagnostic tools and treatment modalities for rectal prolapse. *World J Clin Cases* 2023; **11**: 3680-3693 [PMID: 37383136 DOI: 10.12998/wjcc.v11.i16.3680]
- Birnbaum EH, Stamm L, Rafferty JF, Fry RD, Kodner IJ, Fleshman JW. Pudendal nerve terminal motor latency influences surgical outcome in treatment of rectal prolapse. *Dis Colon Rectum* 1996; **39**: 1215-1221 [PMID: 8918427 DOI: 10.1007/BF02055111]



- 6 **Johansen OB**, Wexner SD, Daniel N, Noguera JJ, Jagelman DG. Perineal rectosigmoidectomy in the elderly. *Dis Colon Rectum* 1993; **36**: 767-772 [PMID: [8348868](#) DOI: [10.1007/BF02048369](#)]
- 7 **Schultz I**, Mellgren A, Nilsson BY, Dolk A, Holmström B. Preoperative electrophysiologic assessment cannot predict continence after rectopexy. *Dis Colon Rectum* 1998; **41**: 1392-1398 [PMID: [9823805](#) DOI: [10.1007/BF02237055](#)]
- 8 **Glasgow SC**, Birnbaum EH, Kodner IJ, Fleshman JW, Dietz DW. Preoperative anal manometry predicts continence after perineal proctectomy for rectal prolapse. *Dis Colon Rectum* 2006; **49**: 1052-1058 [PMID: [16649117](#) DOI: [10.1007/s10350-006-0538-x](#)]
- 9 **Röhrig B**, du Prel JB, Wachtlin D, Kwiecien R, Blettner M. Sample size calculation in clinical trials: part 13 of a series on evaluation of scientific publications. *Dtsch Arztebl Int* 2010; **107**: 552-556 [PMID: [20827353](#) DOI: [10.3238/arztebl.2010.0552](#)]
- 10 **Lefaucheur J**, Yiu R, Thomas C. Pudendal nerve terminal motor latency: age effects and technical considerations. *Clin Neurophysiol* 2001; **112**: 472-476 [PMID: [11222969](#) DOI: [10.1016/s1388-2457\(01\)00464-3](#)]
- 11 **Bordeianou L**, Hicks CW, Kaiser AM, Alavi K, Sudan R, Wise PE. Rectal prolapse: an overview of clinical features, diagnosis, and patient-specific management strategies. *J Gastrointest Surg* 2014; **18**: 1059-1069 [PMID: [24352613](#) DOI: [10.1007/s11605-013-2427-7](#)]
- 12 **van Iersel JJ**, Paulides TJ, Verheijen PM, Lumley JW, Broeders IA, Consten EC. Current status of laparoscopic and robotic ventral mesh rectopexy for external and internal rectal prolapse. *World J Gastroenterol* 2016; **22**: 4977-4987 [PMID: [27275090](#) DOI: [10.3748/wjg.v22.i21.4977](#)]



Published by **Baishideng Publishing Group Inc**  
7041 Koll Center Parkway, Suite 160, Pleasanton, CA 94566, USA  
**Telephone:** +1-925-3991568  
**E-mail:** [office@baishideng.com](mailto:office@baishideng.com)  
**Help Desk:** <https://www.f6publishing.com/helpdesk>  
<https://www.wjgnet.com>

