

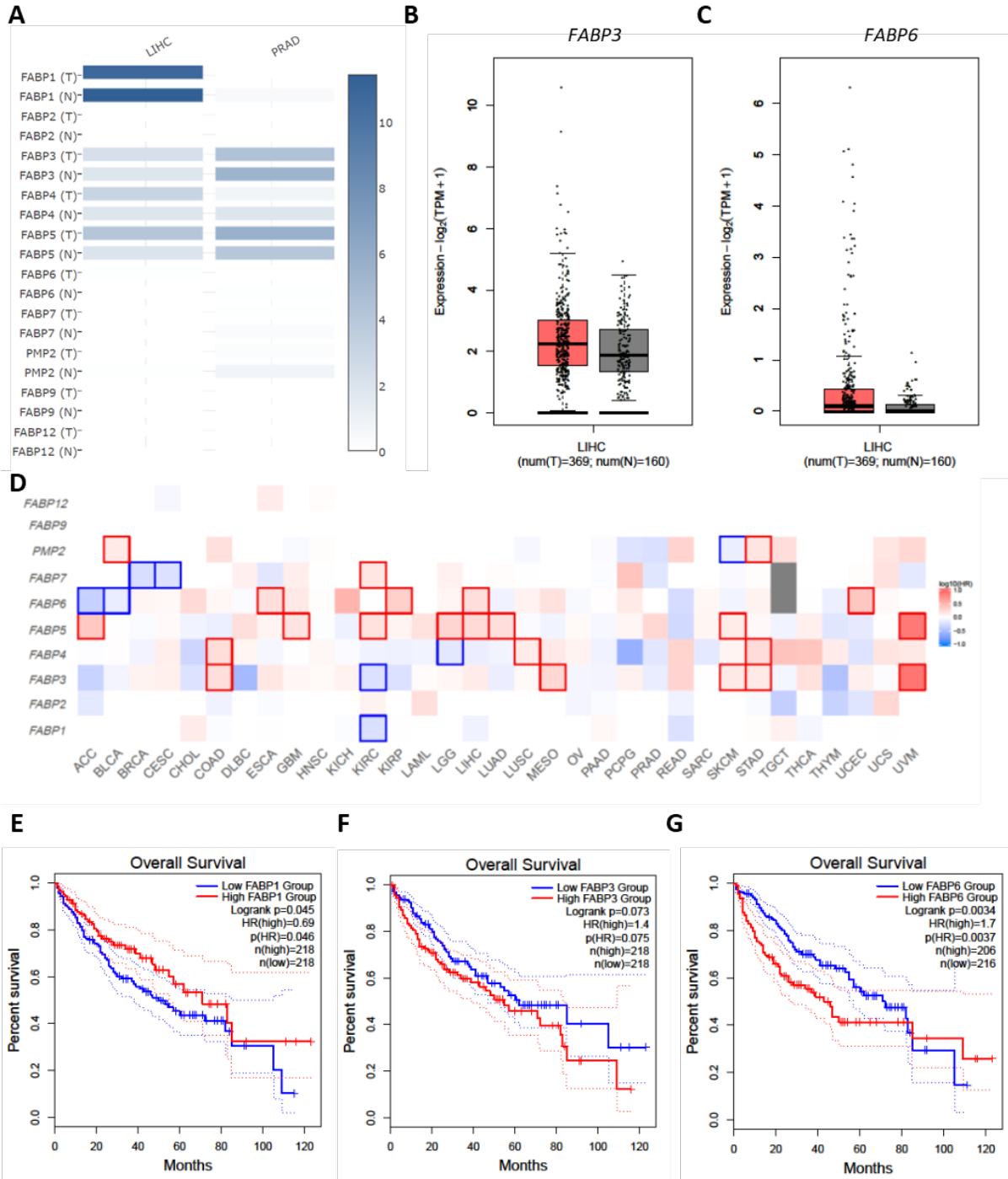
## Supplementary Figure legend

**Supplementary Figure S1. Expression of FABP family members in tumor tissues and non-tumor tissue control and their association with patient survival.** **A:** Expression of all FABP family members in tumor tissues (369 and 492 samples, respectively) and non-tumor tissue controls (50 and 52 samples, respectively) from patients with LIHC or PRAD. **B-C:** Expression of *FABP3* and *FABP6* in liver tumor tissues (369 samples) and non-tumor tissue controls (50 samples) from patients with LIHC. **D:** The significance of differential expression comparing tumor tissues with non-tumor tissues of each FABP family member in each cancer type. **E-G:** High expression of *FABP6* (**G**), but not *FABP1* (**E**) or *FABP3* (**F**), in liver cancer correlates with overall patient survival.

**Supplementary Figure S2. Expression of *FABP5* correlates with *CCNB1* expression in various cancer types.** **A:** *FABP5* expression positively correlated with expression of *CCNB1* in pan-cancer. **B:** *FABP5* expression positively correlated with expression of *CCNB1* in the highlighted cancer types (HCC, COAD, DLBCL, KICH, KIRC, READ, TGCT and UVM). P values show the statistical significance of the correlation; R values show the correlation coefficient.

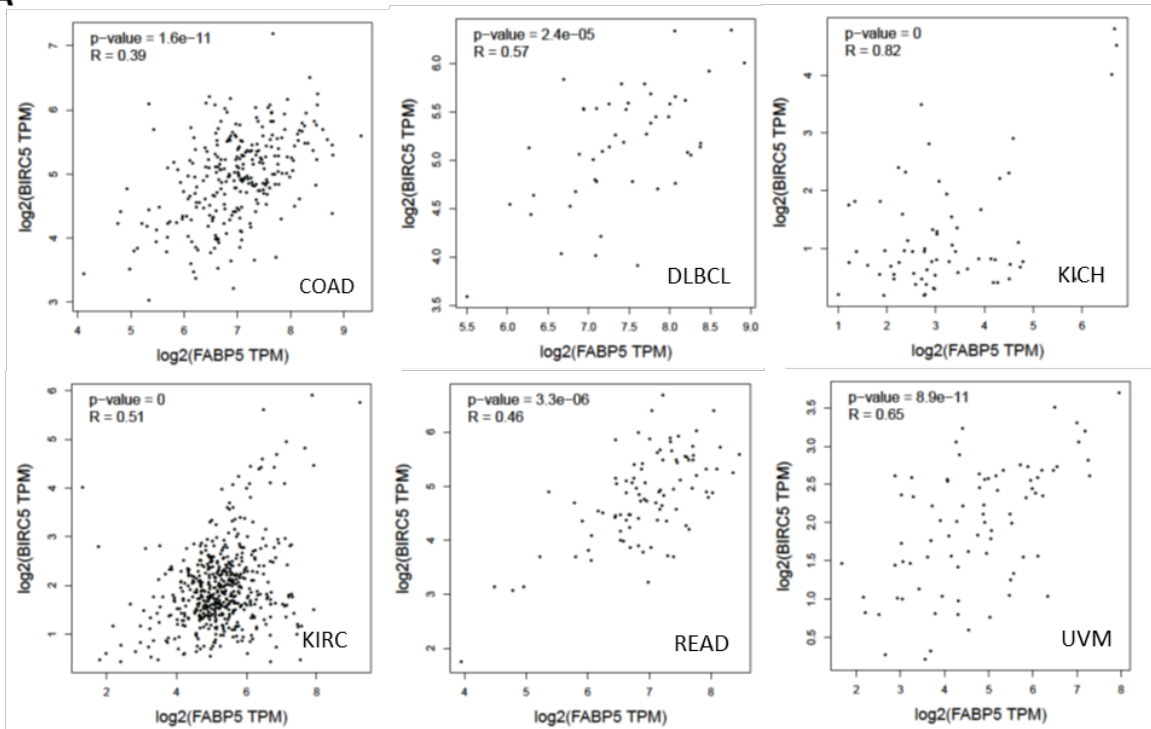
**Supplementary Figure S3. Expression of *FABP5* correlates with *PLK1* and *BIRC5* expression in various cancer types.** **A:** *FABP5* expression positively correlated with expression of *BIRC5* (**A**) or *PLK1* (**B**) in highlighted cancer types (COAD, DLBCL, KICH, KIRC, READ, UVM). P values show the statistical significance of the correlation; R values show the correlation coefficient.

Supplementary Figure S1

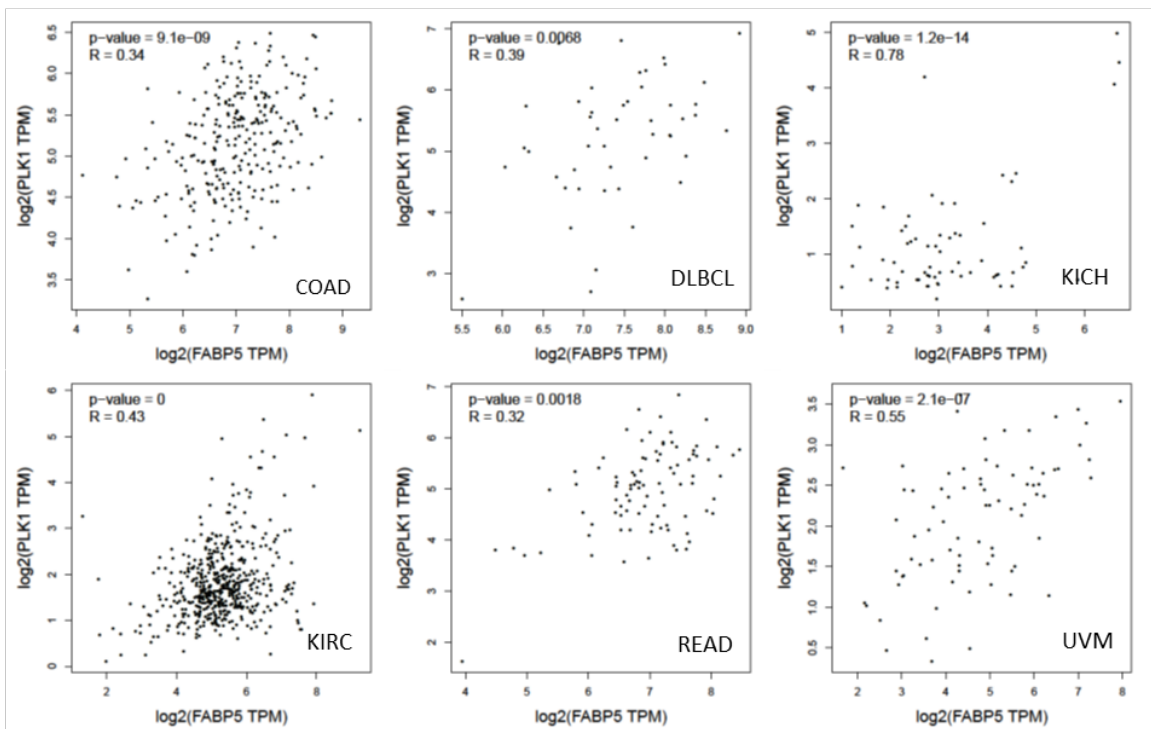


## Supplementary Figure S2

**A**

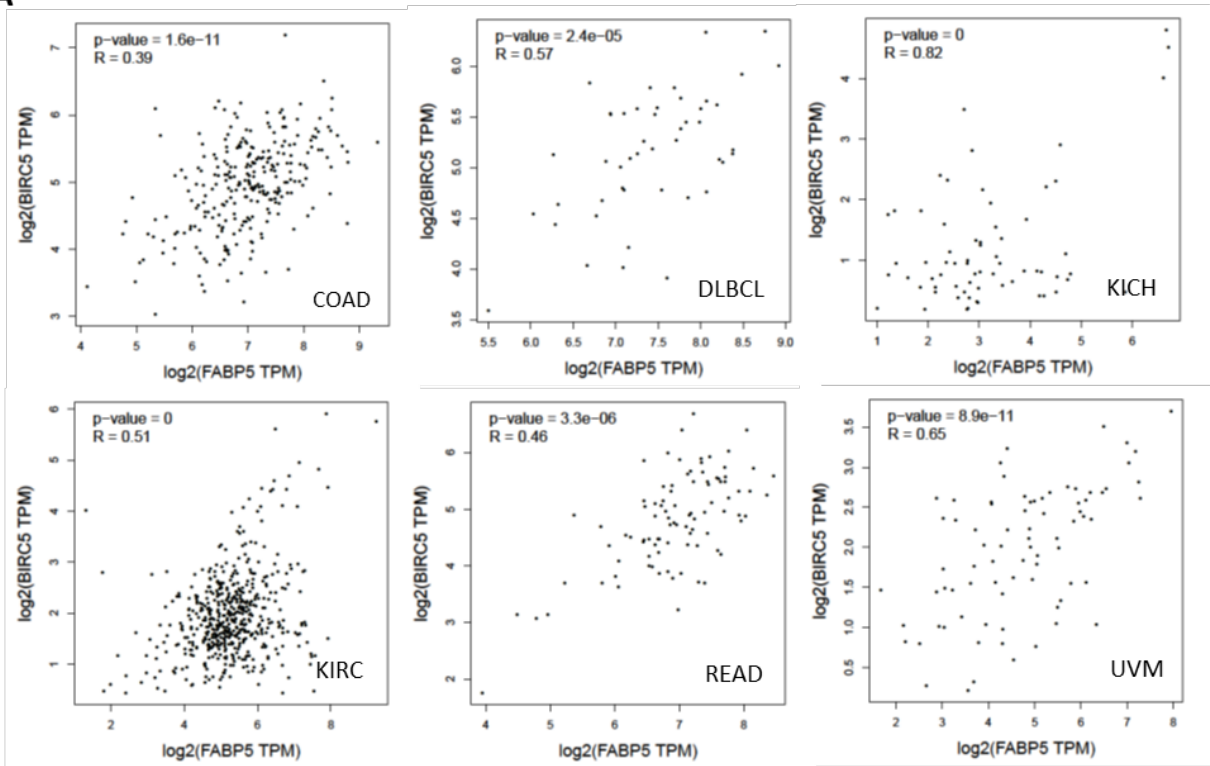


**B**



# Supplementary Figure S3

## A



## B

