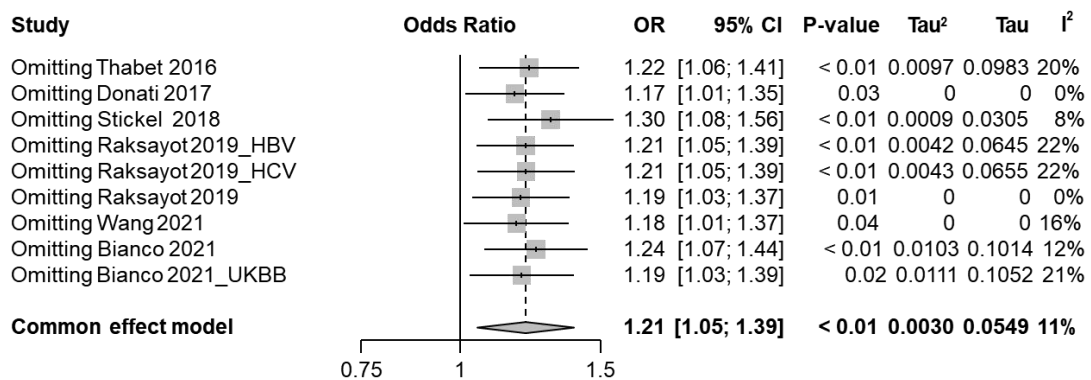


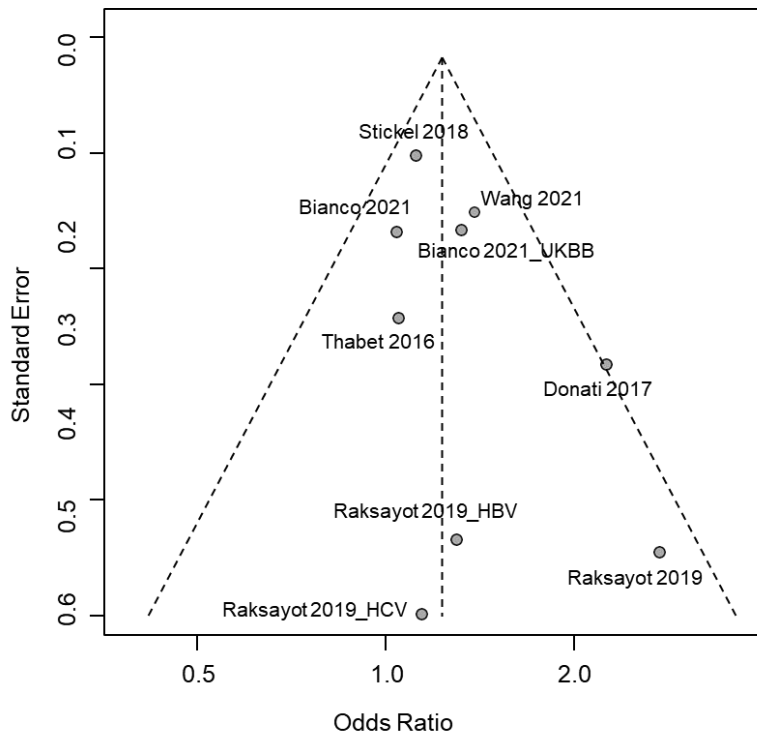
DOI: 10.4251/wjgo.v0.i0.0000 Copyright ©The Author(s) 2023.

**Supplementary Figure 1** The forest plot of the association between MBOAT7 rs641738 and hepatocellular carcinoma risk under the recessive model. OR: Odds ratio; 95%CI: 95% confidence interval; HBV: Hepatitis B virus; HCV: Hepatitis C virus; UKBB: United Kingdom Biobank.



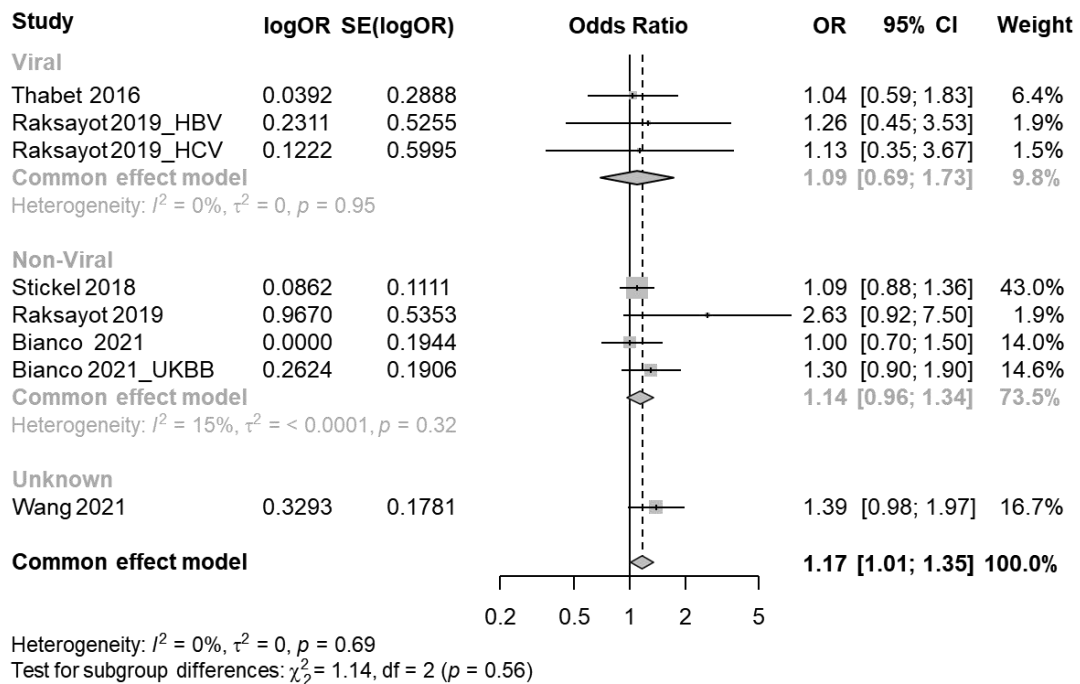
DOI: 10.4251/wjgo.v0.i0.0000 Copyright ©The Author(s) 2023.

**Supplementary Figure 2** The forest plot of the influence analysis under the recessive model. OR: Odds ratio; 95%CI: 95% confidence interval; HBV: Hepatitis B virus; HCV: Hepatitis C virus; UKBB: United Kingdom Biobank.



DOI: 10.4251/wjgo.v0.i0.0000 Copyright ©The Author(s) 2023.

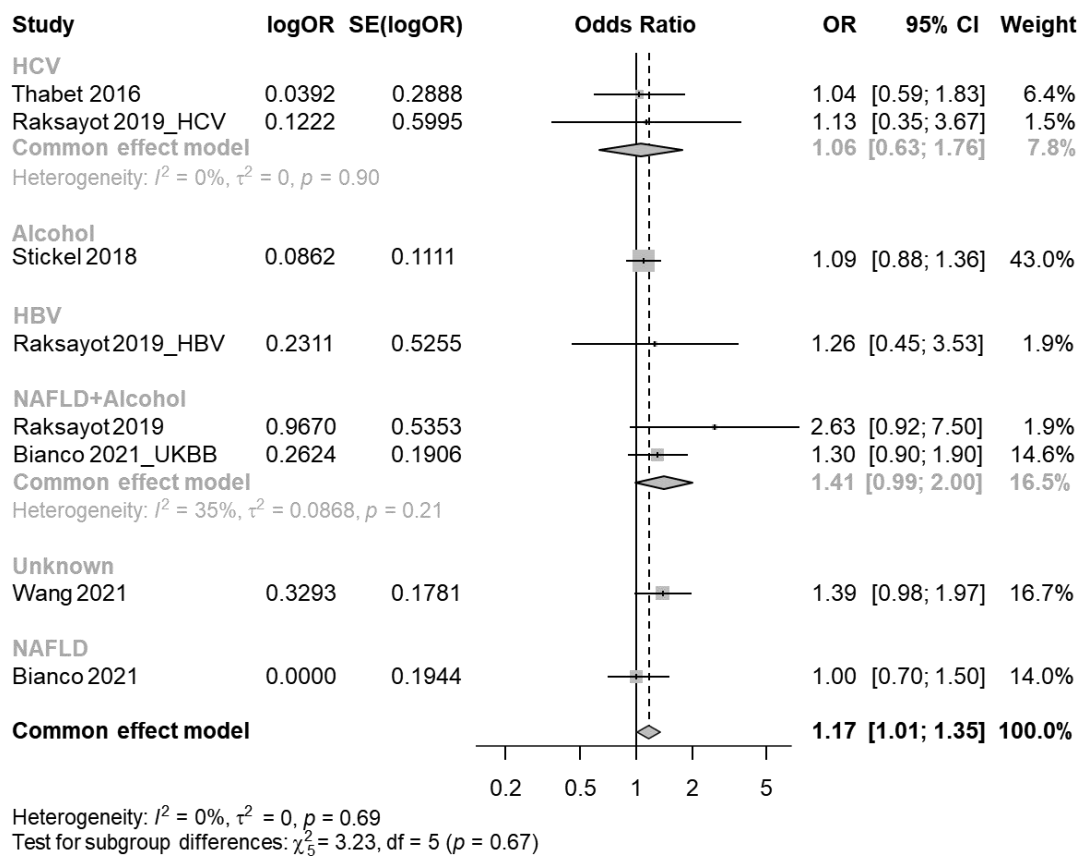
**Supplementary Figure 3** The funnel plot of the included studies in meta-analysis under the recessive model. HBV: Hepatitis B virus; HCV: Hepatitis C virus; UKBB: United Kingdom Biobank.



DOI: 10.4251/wjgo.v0.i0.0000 Copyright ©The Author(s) 2023.

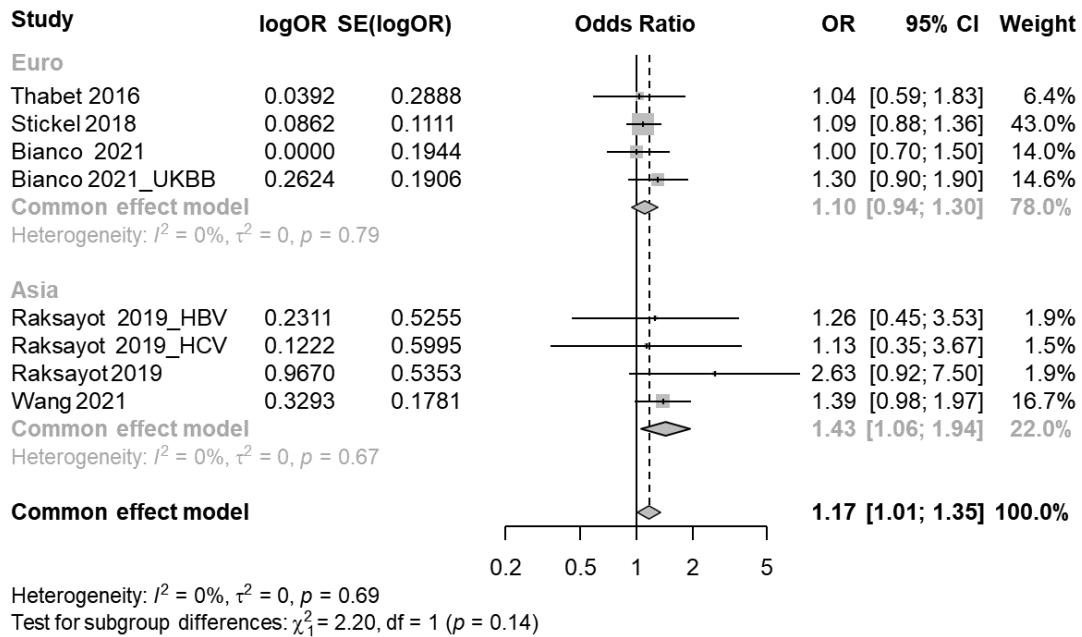
**Supplementary Figure 4** The forest plot of the subgroup analysis under the

**recessive model (stratification by viral or non-viral related hepatocellular carcinoma).** OR: Odds ratio; 95%CI: 95% confidence interval; HBV: Hepatitis B virus; HCV: Hepatitis C virus; UKBB: United Kingdom Biobank.



DOI: 10.4251/wjgo.v0.i0.0000 Copyright ©The Author(s) 2023.

**Supplementary Figure 5 The forest plot of the subgroup analysis under the recessive model (stratification by detailed etiology).** OR: Odds ratio; 95%CI: 95% confidence interval; HBV: Hepatitis B virus; HCV: Hepatitis C virus; UKBB: United Kingdom Biobank.



DOI: 10.4251/wjgo.v0.i0.0000 Copyright ©The Author(s) 2023.

**Supplementary Figure 6** The forest plot of the subgroup analysis under the recessive model (stratification by geographical origin). OR: Odds ratio; 95%CI: 95% confidence interval; HBV: Hepatitis B virus; HCV: Hepatitis C virus; UKBB: United Kingdom Biobank.