

Supplementary table 1. Search Strategy

Database	Search String / Strategy
PubMed / MEDLINE	("Heart Failure"[Mesh] OR "Heart Failure"[Title/ Abstract] OR "HFrEF"[Title/ Abstract] OR "HFpEF"[Title/ Abstract]) AND ("Finerenone"[Supplementary Concept] OR "Finerenone"[Title/ Abstract] OR "Nonsteroidal MRA"[Title/ Abstract]) AND (Randomized Controlled Trial[Publication Type])
Science Direct	Keywords: "Heart Failure", "Finerenone", "Nonsteroidal MRA". Filters applied: Research Articles, Medicine and Dentistry, Clinical Trials.
Google Scholar	"Finerenone" AND "Heart Failure" AND "Clinical Outcomes"; "Finerenone" AND "HFrEF" OR "HFpEF".

Legend: HFrEF: Heart Failure with Reduced Ejection Fraction; HFpEF: Heart Failure with Preserved Ejection Fraction; MeSH: Medical Subject Headings; MRA: Mineralocorticoid Receptor Antagonist; RCT: Randomized Controlled Trial

Supplementary table 2. Inclusion-Exclusion Criteria

Category	Inclusion Criteria	Exclusion Criteria
Study Design	Randomized Controlled Trials (RCTs).	Observational studies (cohort, case-control), Reviews, Editorials, Case Reports, and Animal Studies.
Population	Adult patients (≥ 18 years) with a diagnosis of Heart Failure (regardless of Ejection Fraction phenotype).	Patients without a diagnosis of Heart Failure or non-HF populations.
Intervention	Treatment with Finerenone (any dosage).	Studies utilizing steroidal MRAs (e.g., Spironolactone, Eplerenone) without a Finerenone arm.
Comparator	Placebo or active control (e.g., standard of care/steroidal MRAs).	Single-arm studies lacking a control group.
Outcomes	Reported clinical outcomes	Studies not reporting relevant clinical efficacy or safety endpoints.
Language	English language publications.	Non-English language publications.

Legend: HF: Heart Failure; MRA: Mineralocorticoid Receptor Antagonist; RCT: Randomized Controlled Trial

Supplementary table 3. Heterogeneity Assessment

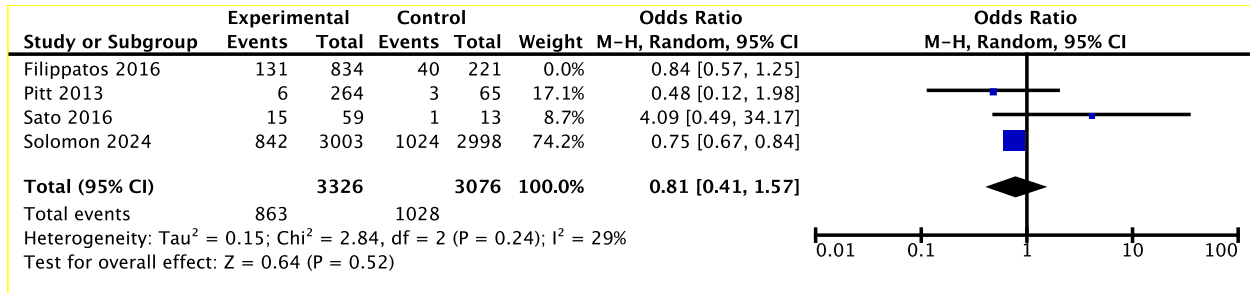
Outcome Category	Outcome Measure	n	χ^2	df	P-value	I² Statistic	Heterogeneity Interpretation
Efficacy	WHF	4	3.14	3	0.37	4%	Low
	Change in KCCQ Score	3	1.32	2	0.52	0%	Low
Safety	Hyperkalemia	4	13.73	3	0.003	78%	High
	AE	3	3.04	2	0.22	34%	Moderate
	SAE	3	0.44	2	0.8	0%	Low

Legend: AE: Adverse Event; df: Degrees of Freedom; I²: I-squared statistic (percentage of variation across studies that is due to heterogeneity rather than chance); KCCQ: Kansas City Cardiomyopathy Questionnaire; n: Number of studies included; SAE: Serious Adverse Event; WHF: Worsening Heart Failure; χ^2 : Chi-squared statistic.

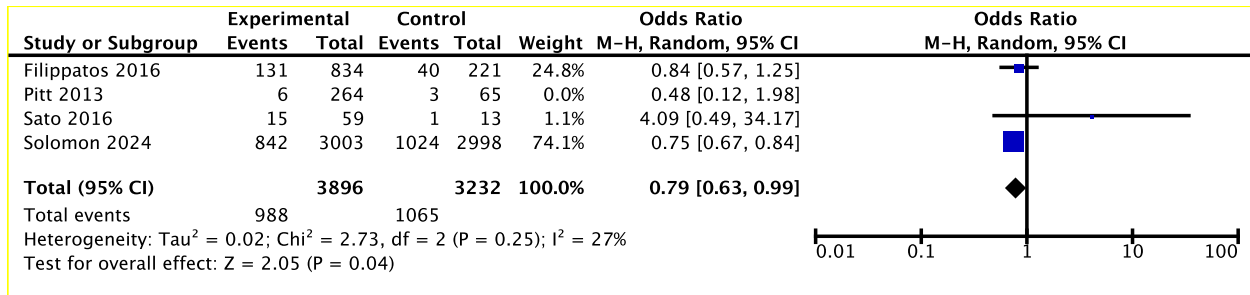
Supplementary Figure 1 Leave One Out (LOO) Sensitivity Assessment

Supplementary File LOO Sensitivity Assessment - WHF

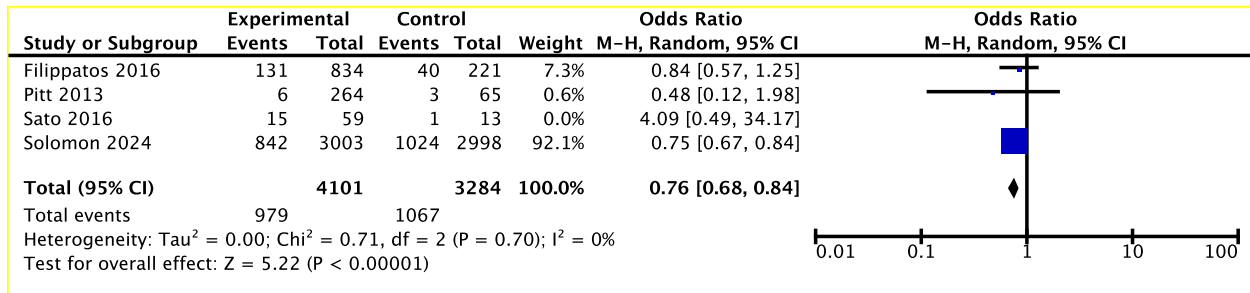
LOO - Filippatos



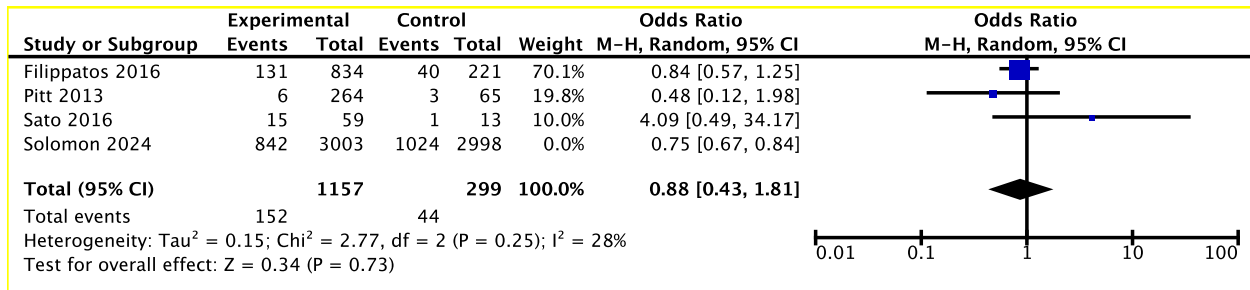
LOO - Pitt



LOO - Sato

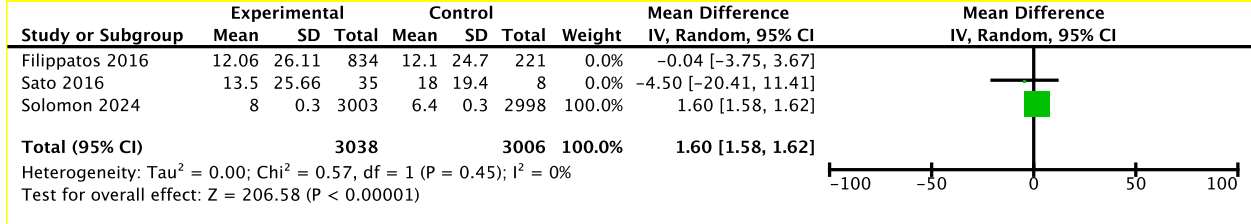


LOO - Solomon

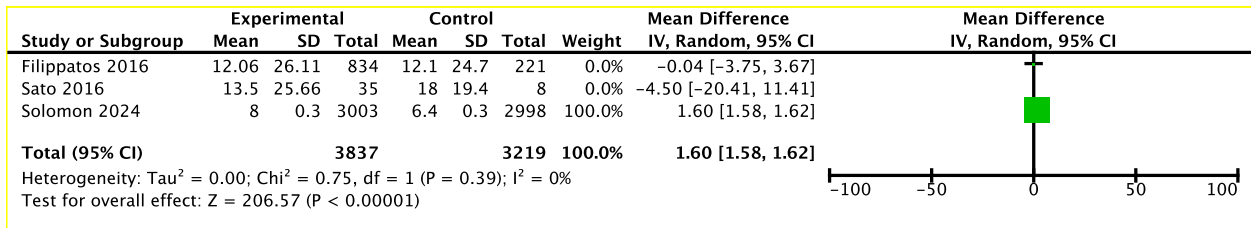


Supplementary File LOO Sensitivity Assessment - Change in KCCQ Score

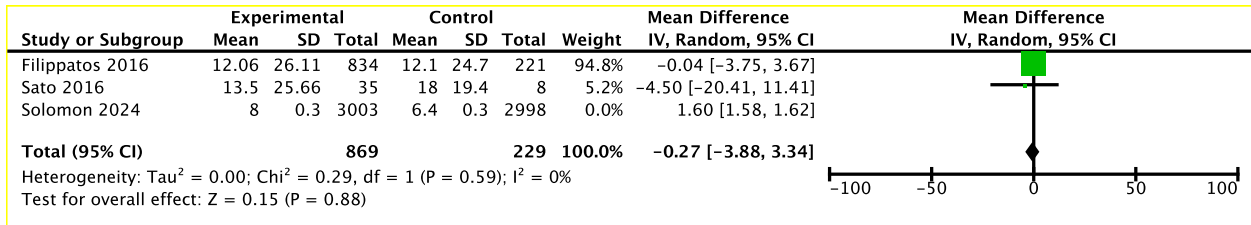
LOO - Filippatos



LOO - Sato

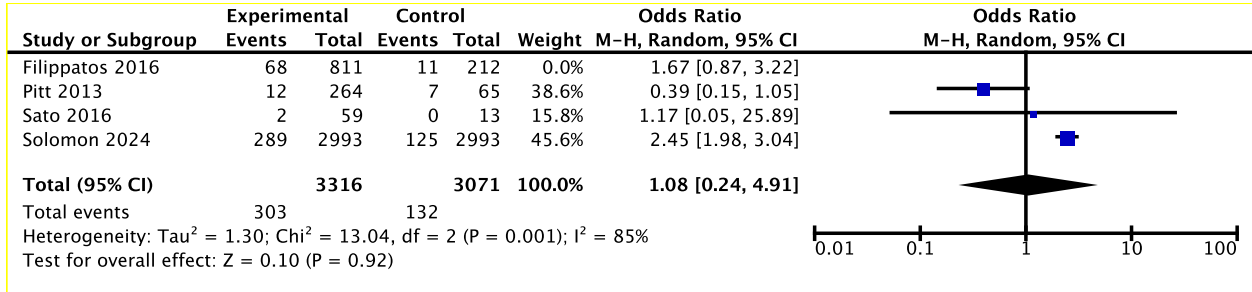


LOO - Solomon

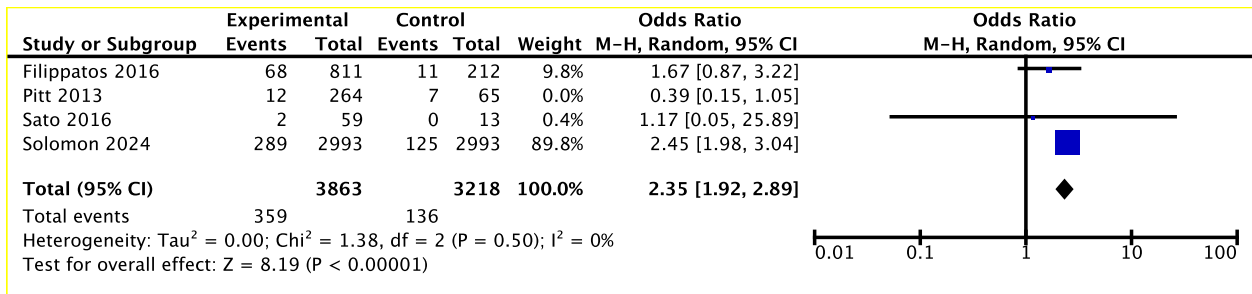


Supplementary Figure 1 . LOO Sensitivity Assessment - Hyperkalemia

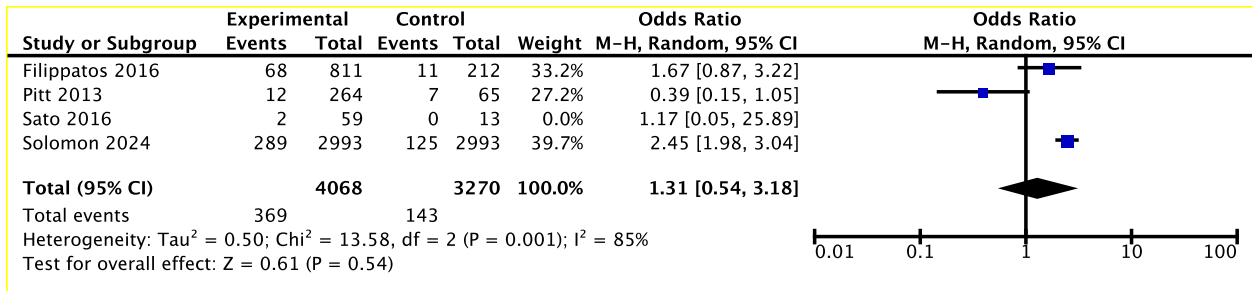
LOO - Filippatos



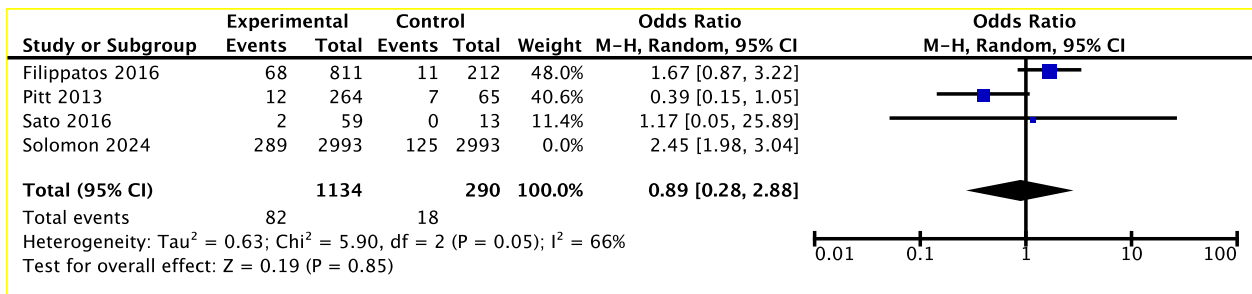
LOO - Pitt



LOO - Sato

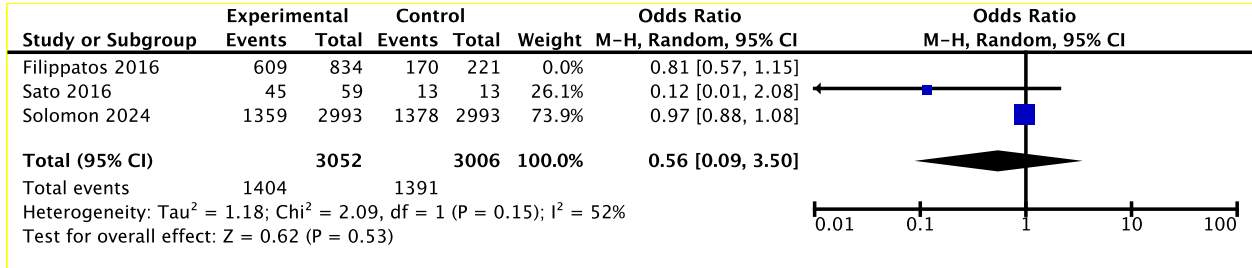


LOO - Solomon

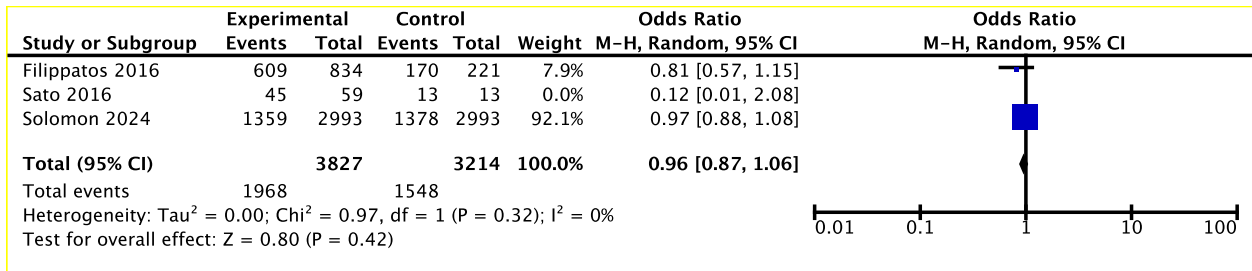


Supplementary File LOO Sensitivity Assessment – Adverse Event

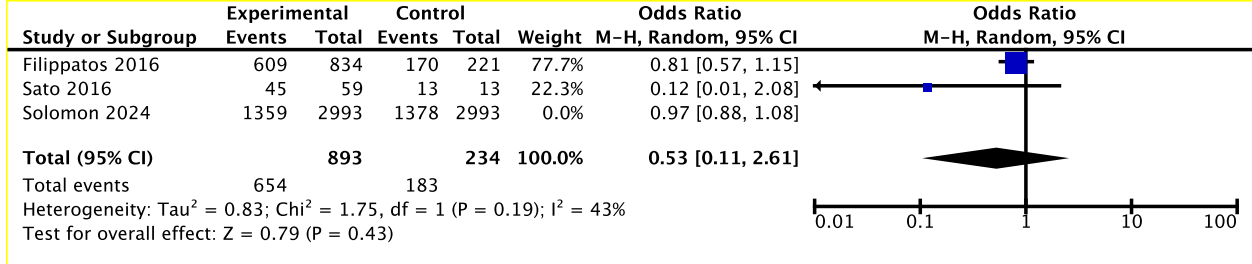
LOO – Filippatos



LOO – Sato

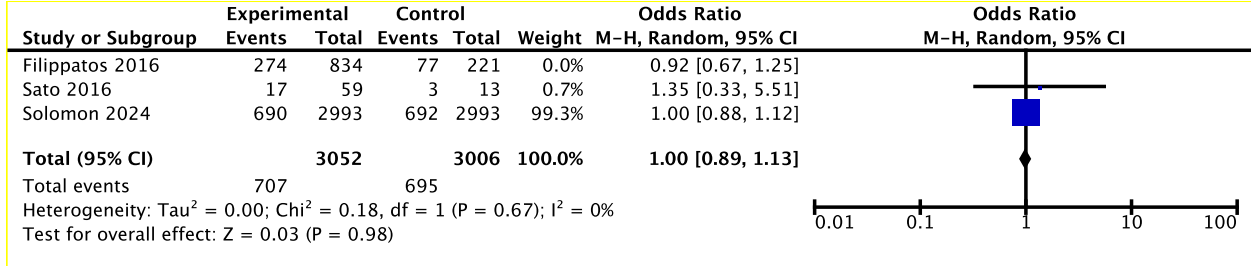


LOO – Solomon

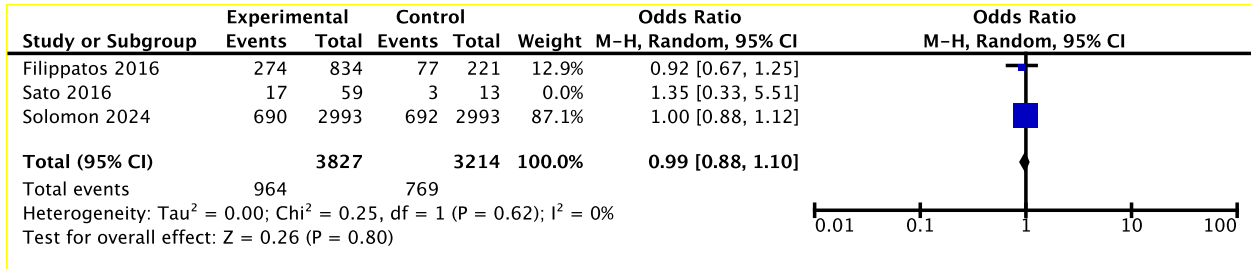


Supplementary File LOO Sensitivity Assessment – Severe Adverse Event

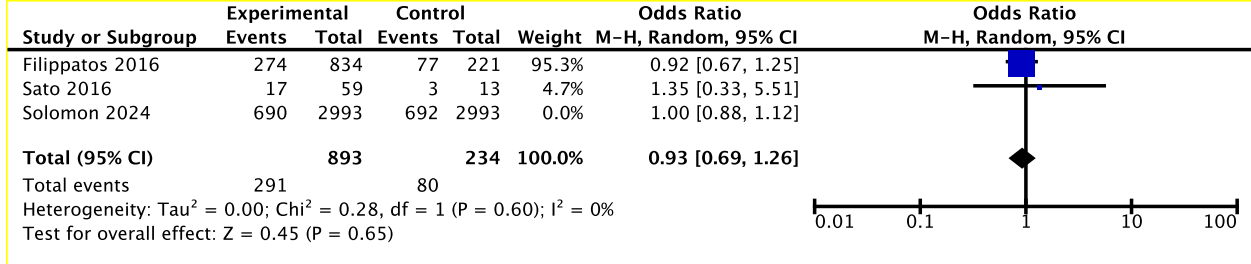
LOO – Filippatos



LOO – Sato



LOO – Solomon



Supplementary Table 4. Risk of Bias Assessment (RoB 2)

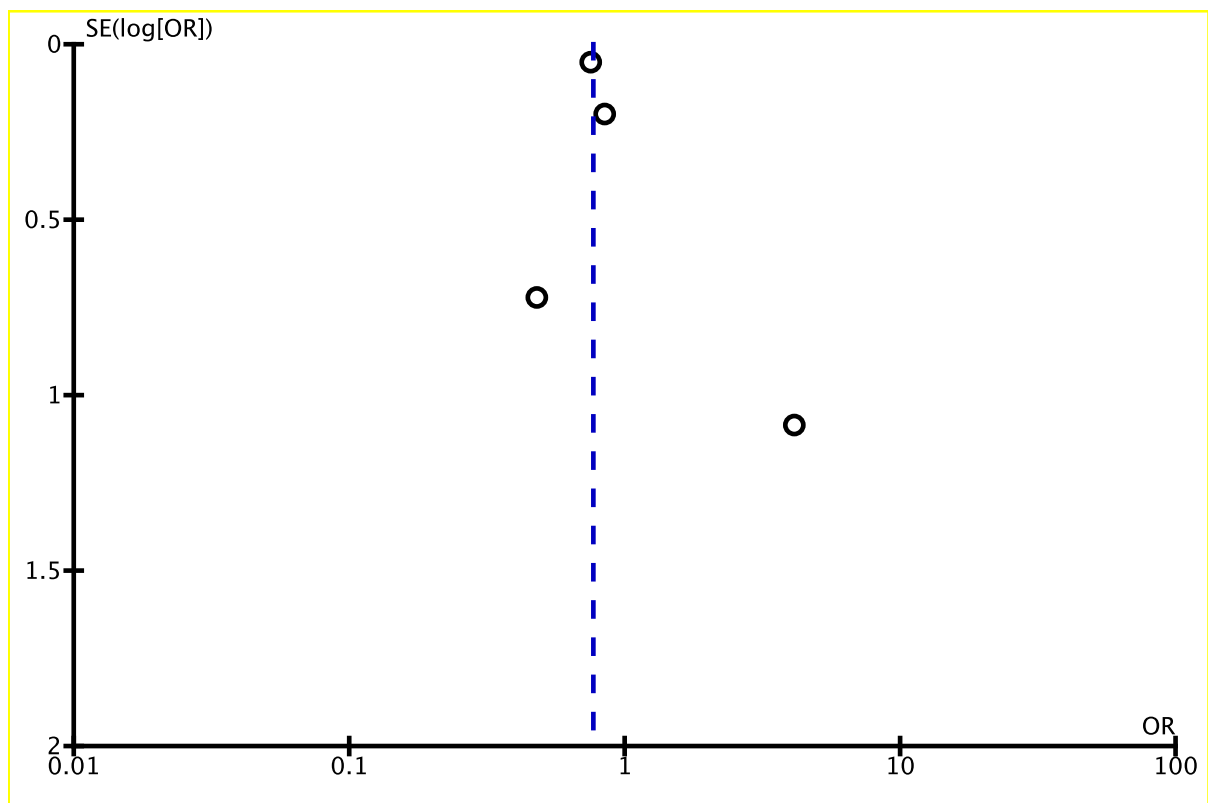
Study ID	D1	D2	D3	D4	D5	Overall
Solomon 2024	(+) Low	(+) Low	(!) Unknown	(+) Low	(+) Low	Low Risk
Filippatos 2016	(+) Low	(+) Low	(+) Low	(+) Low	(+) Low	Low Risk
Sato 2016	(+) Low	(+) Low	(+) Low	(!) Unknown	(+) Low	Low Risk
Pitt 2013	(+) Low	(+) Low	(+) Low	(+) Low	(+) Low	Low Risk

Legend: D1: Domain 1 (Randomization Process); D2: Domain 2 (Deviations from Intended Interventions); D3: Domain 3 (Missing Outcome Data); D4: Domain 4 (Measurement of the Outcome); D5: Domain 5 (Selection of Reported Result); RoB 2: Risk of Bias 2 Tool (Cochrane)

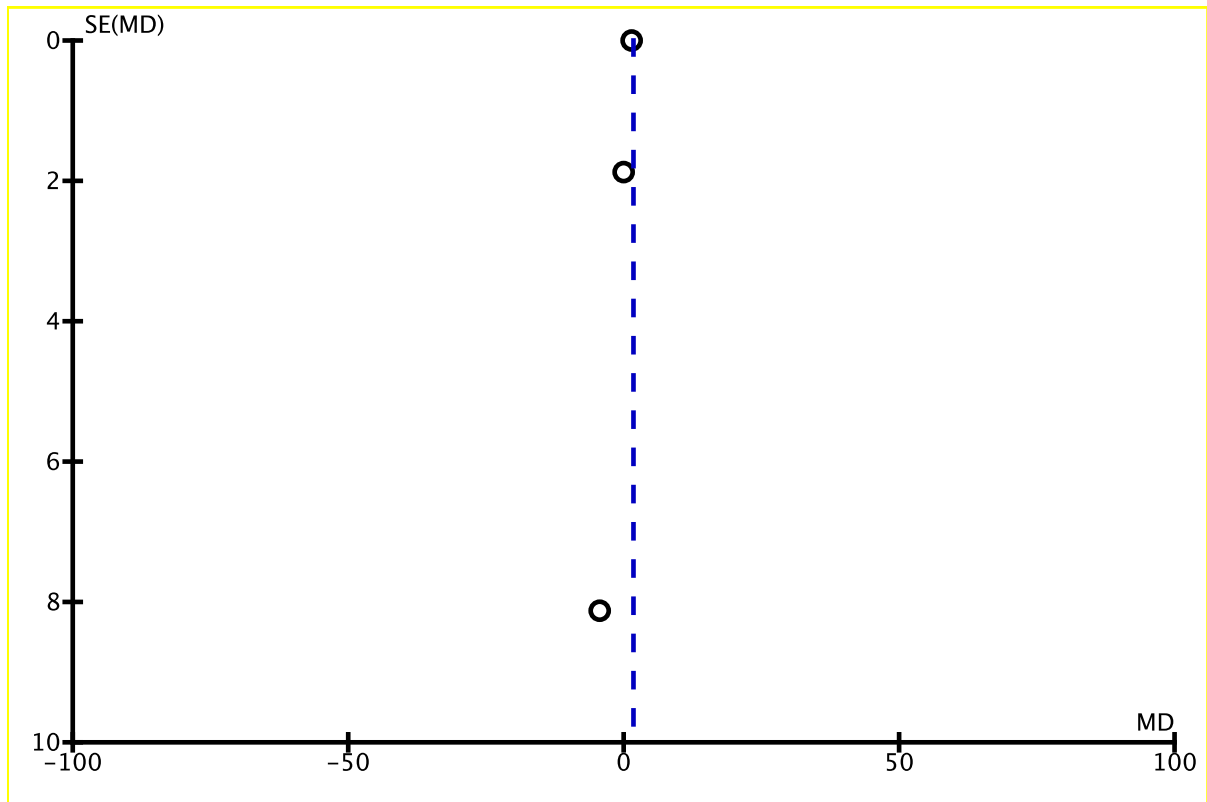
Interpretation: (+) Low: Low risk of bias; (!) Some Concerns/ Unknown; (-) High: High risk of bias.

Supplementary Figure 2. Publication Bias Assessment

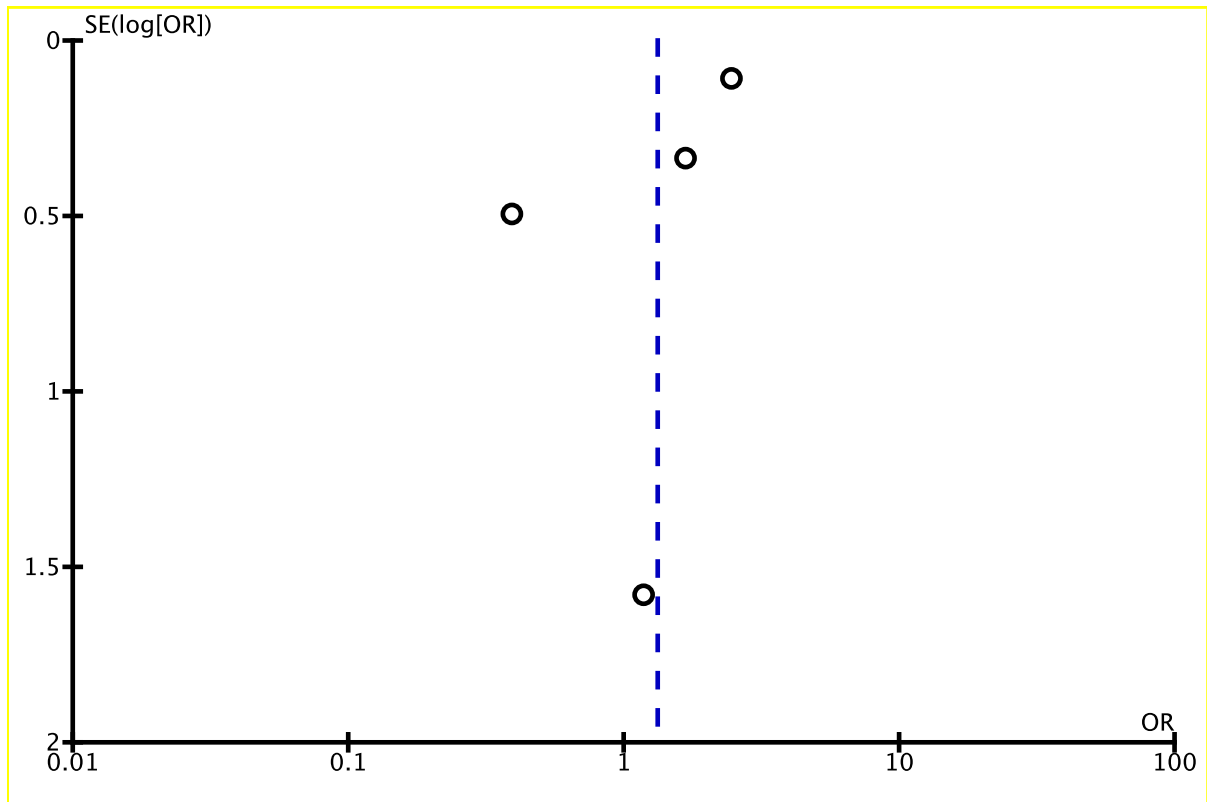
Supplementary File S6a. Funnel Plot - WHF



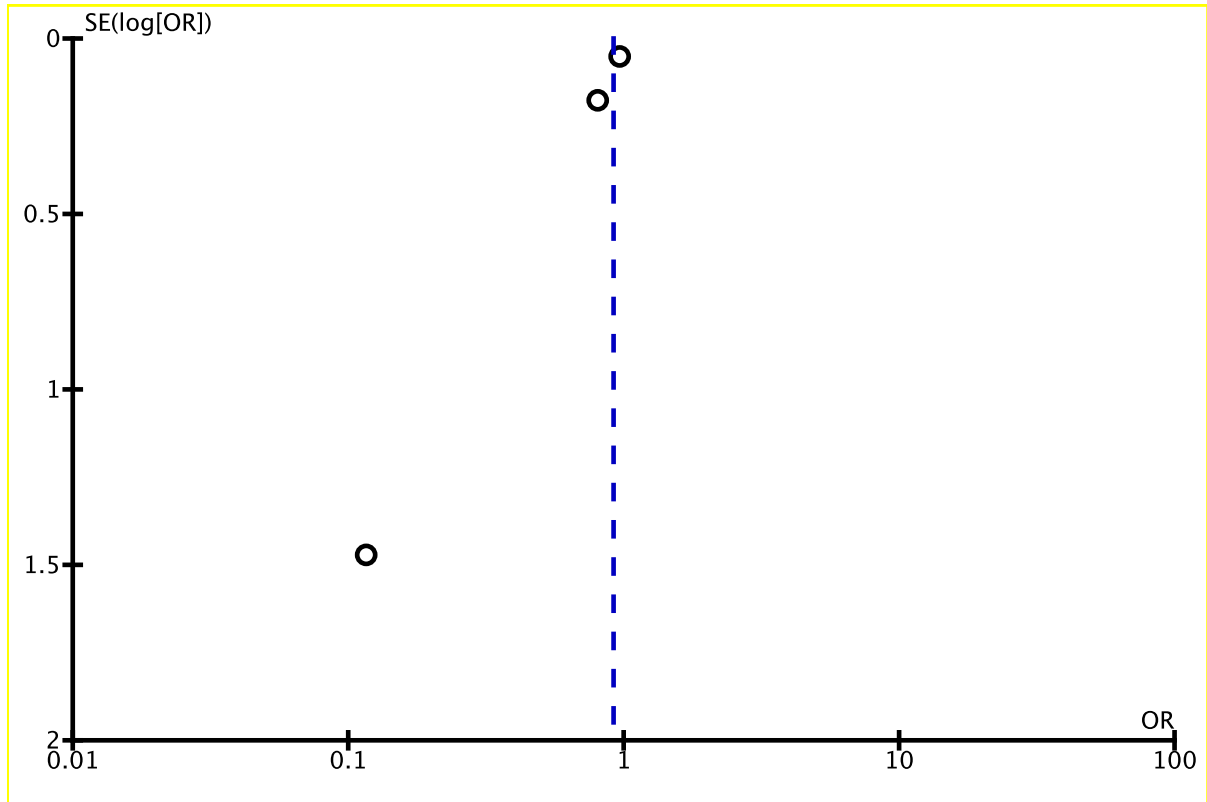
Supplementary Figure 3. Funnel Plot - Change in KCCQ Score



Supplementary Figure 4. Funnel Plot -Hyperkalemia



Supplementary Figure 5. Funnel Plot - Adverse Event



Supplementary Figure 6 Funnel Plot - Severe Adverse Event

