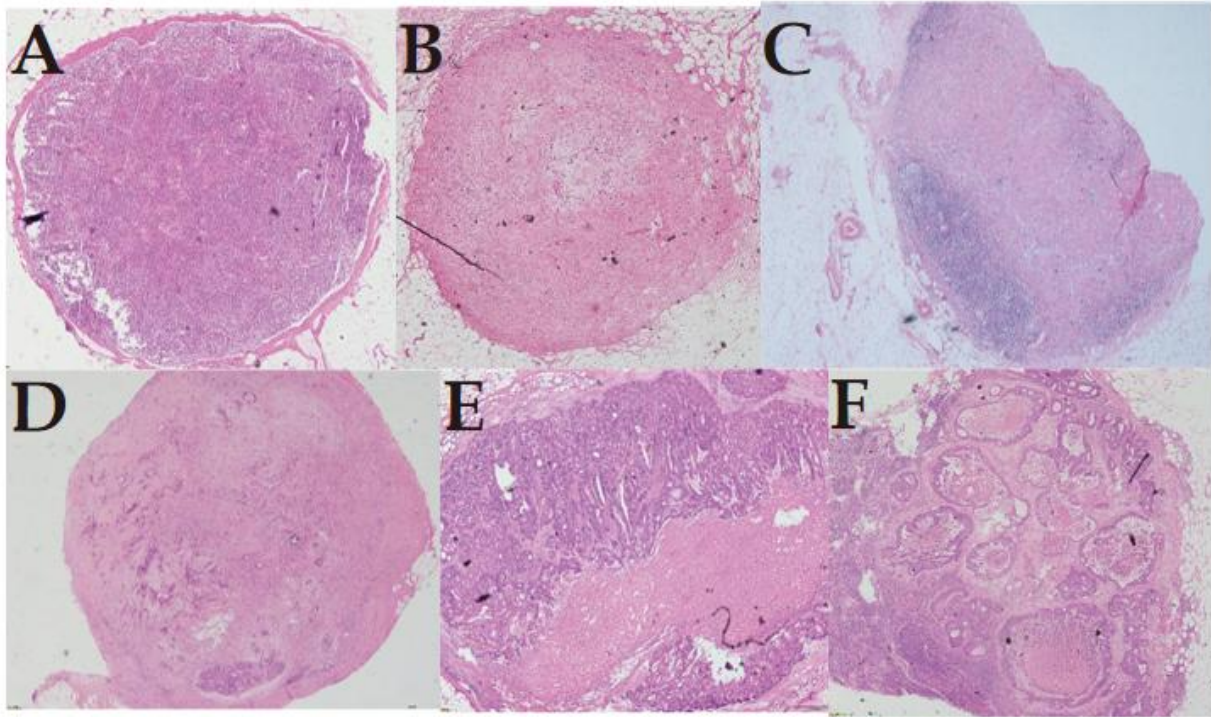


Supplemental Figure 1 Primary tumor histopathological slides representing tumor regression grade. A: TRG1: No residual cancer; B: TRG2: Rare residual cancer cells; C: TRG3: Fibrosis outgrowing residual cancer; D: TRG4: Residual cancer outgrowing fibrosis; E: TRG5: Absence of regressive changes.



Supplemental Figure 2 Lymph node histopathological slides representing lymph node regression grade. A: LRG0: Normal LN; B: LRG1: No residual cancer; C: LRG2: Rare residual cancer cells; D: LRG3: Fibrosis more than residual cancer; E: LRG4: Residual cancer more than fibrosis; F: LRG5: Seldom regressive changes.

