

Supplement 1

The global, regional, and national burden of gallbladder and biliary diseases in 204 countries and territories, 1990 to 2019: a systematic analysis for the Global Burden of Disease Study 2019

Table S1. The incidence of gallbladder and biliary diseases between 1990 and 2019 at national level, both sexes.....2-14

Table S2. The Prevalence of gallbladder and biliary diseases between 1990 and 2019 at national level, both sexes.....15-33

Table S3. The years lived with disability (YLDs) of gallbladder and biliary diseases between 1990 and 2019 at national level, both sexes.....34-46

Table S1. The incidence of gallbladder and biliary diseases between 1990 and 2019 at national level, both sexes						
regions	Cases in 1990	Cases in 2019	Change in absolute number (95% UI)	ASRs in 1990	ASRs in 2019	EAPC No. (95% CI)
Afghanistan	13732 (12076 to 16220)	48432 (40514 to 56748)	2.53 (2.19-2.94)	167.98 (147.13 to 198.54)	205.47 (178.04 to 242.79)	0.86 (0.56 to 1.17)
Albania	22123 (18506 to 26651)	32861 (27633 to 39498)	0.49 (0.32-0.65)	808.06 (686.08 to 976.53)	959.81 (802.71 to 1152.85)	0.63 (0.49 to 0.77)
Algeria	36610 (30935 to 43740)	97660 (81727 to 118492)	1.67 (1.39-1.96)	218.69 (186.06 to 258.82)	239.49 (202.88 to 288.59)	0.31 (0.04 to 0.58)
American Samoa	59 (51 to 70)	98 (85 to 116)	0.66 (0.52-0.79)	171.24 (149.61 to 200.82)	188.61 (163.13 to 220.01)	0.48 (0.18 to 0.79)
Andorra	232 (195 to 279)	501 (420 to 604)	1.16 (0.99-1.34)	382.98 (324.43 to 458.71)	404.88 (340.77 to 484.42)	0.19 (-0.02 to 0.4)
Angola	2593 (2192 to 3015)	9967 (8388 to 11771)	2.84 (2.53-3.14)	33.66 (29.64 to 38.66)	46.58 (41.01 to 53.77)	1.25 (0.59 to 1.92)
Antigua and Barbuda	183 (157 to 214)	338 (289 to 403)	0.85 (0.68-1.05)	330.28 (284.5 to 385.98)	332.53 (285.81 to 393.53)	0.08 (-0.15 to 0.31)
Argentina	57464 (49626 to 66828)	88715 (76743 to 106316)	0.54 (0.42-0.68)	178.77 (154.47 to 208.69)	178.23 (153.92 to 212.94)	-1.43 (-1.72 to -1.14)
Armenia	14295 (12264 to 16853)	19187 (16464 to 22684)	0.34 (0.22-0.46)	451.27 (387.33 to 530.95)	520.31 (447.77 to 612.7)	0.61 (0.42 to 0.8)
Australia	91931 (78309 to 109479)	164234 (138272 to 195728)	0.79 (0.64-0.95)	496.37 (422.89 to 592.24)	522.83 (435.88 to 625.1)	0.12 (-0.06 to 0.31)
Austria	95764 (82643 to 110764)	105653 (91598 to 125187)	0.1 (0.02-0.21)	963.63 (825.71 to 1121.17)	790.57 (676.69 to 944.41)	-0.77 (-0.9 to -0.64)
Azerbaijan	23923 (20658 to 28358)	44886 (38274 to 53896)	0.88 (0.7-1.09)	384.05 (333.68 to 450.59)	399.76 (344.6 to 472.53)	0.17 (-0.04 to 0.38)
Bahamas	774 (660 to 919)	1428 (1218 to 1685)	0.85 (0.68-1.05)	353.05 (306.77 to 414.92)	341.76 (293.28 to 402.89)	-0.09 (-0.31 to 0.13)
Bahrain	849 (717 to 1019)	3781 (3094 to 4671)	3.45 (2.9-4.03)	248.67 (216.17 to 289.77)	235.2 (196.82 to 279.79)	-0.34 (-0.6 to -0.08)

		208749			136.6	1.22
Bangladesh	79378 (66274 to 94415)	(175147 to 244826)	1.63 (1.35-1.88)	100.07 (86.2 to 117.21)	(115.88 to 159.85)	(0.83 to 1.61)
Barbados	824 (710 to 965)	1163 (1000 to 1379)	0.41 (0.28-0.57)	318.67 (274.13 to 374.88)	315.49 (266.22 to 372.33)	0.06 (-0.17 to 0.3)
Belarus	110988 (94925 to 131888)	122285 (105098 to 145504)	0.1 (-0.01-0.21)	924.53 (795.35 to 1092.29)	942.32 (813.5 to 1116.13)	0.1 (-0.03 to 0.24)
Belgium	50422 (43749 to 59496)	65577 (55386 to 78109)	0.3 (0.16-0.44)	391.36 (336.29 to 466.39)	395.64 (330.63 to 476.84)	0.66 (0.47 to 0.85)
Belize	412 (350 to 478)	1199 (1020 to 1407)	1.91 (1.61-2.21)	309.66 (269.95 to 358.86)	320.55 (276.44 to 371.21)	0.24 (0.01 to 0.47)
Benin	1372 (1148 to 1634)	4151 (3436 to 5010)	2.03 (1.77-2.26)	35.79 (30.87 to 41.86)	42.13 (36.31 to 49.89)	0.55 (-0.12 to 1.22)
Bermuda	216 (185 to 255)	287 (242 to 345)	0.33 (0.2-0.48)	329.45 (283.99 to 386.57)	338.37 (283.34 to 404.14)	0.16 (-0.07 to 0.39)
Bhutan	436 (368 to 519)	925 (781 to 1107)	1.12 (0.88-1.36)	99.51 (86.19 to 116.7)	129.86 (111.14 to 153.83)	0.92 (0.53 to 1.31)
Bolivia (Plurinational State of)	9665 (8380 to 11153)	25405 (21979 to 29480)	1.63 (1.41-1.85)	198.61 (174.22 to 229.16)	236.44 (205.73 to 273.8)	0.62 (0.34 to 0.9)
Bosnia and Herzegovina	43142 (37537 to 50781)	47636 (41201 to 56038)	0.1 (0.01-0.22)	927.36 (807.65 to 1081.84)	1022.15 (882.82 to 1193.92)	0.37 (0.24 to 0.5)
Botswana	973 (827 to 1148)	2417 (2062 to 2892)	1.48 (1.28-1.72)	102.34 (89.41 to 119.79)	114.87 (100.3 to 136.6)	1.18 (0.84 to 1.52)
Brazil	797740 (677054 to 941070)	2497016 (2089979 to 2956370)	2.13 (1.96-2.29)	674.04 (576.63 to 786.15)	1052.16 (880.38 to 1243.88)	1.68 (1.55 to 1.82)
Brunei Darussalam	1804 (1525 to 2133)	4455 (3814 to 5252)	1.47 (1.25-1.68)	1037.32 (905.82 to 1208.53)	1069.8 (936.19 to 1245.07)	0.06 (-0.06 to 0.19)
Bulgaria	100145 (87222 to 117118)	97777 (82383 to 116297)	-0.02 (-0.12-0.07)	930.84 (811.97 to 1080.15)	967.44 (816.58 to 1142.57)	0.11 (-0.03 to 0.24)
Burkina Faso	2710 (2282 to 3215)	7822 (6536 to 9295)	1.89 (1.68-2.12)	35.43 (30.61 to 41.06)	44.26 (38.48 to 51.48)	0.87 (0.21 to 1.53)
Burundi	1428 (1222 to 1717)	3889 (3300 to 4572)	1.72 (1.54-1.91)	35.11 (31.07 to 40.77)	46.92 (41.31 to 54.43)	1.17 (0.51 to 1.83)

Cabo Verde	115 (97 to 137)	247 (201 to 297)	1.14 (0.95-1.35)	39.19 (33.36 to 45.71)	45.5 (37.54 to 53.9)	0.49 (-0.15 to 1.13)
Cambodia	13431 (11599 to 15698)	34110 (29092 to 41038)	1.54 (1.32-1.76)	187.31 (165.12 to 219.17)	225.71 (195.28 to 269.23)	0.66 (0.37 to 0.95)
Cameroon	3014 (2526 to 3596)	10185 (8409 to 12042)	2.38 (2.09-2.62)	36.24 (31.35 to 42.09)	43.58 (37.54 to 50.84)	0.6 (-0.06 to 1.26)
Canada	195299 (167471 to 228355)	329455 (283142 to 390068)	0.69 (0.54-0.84)	633.2 (544.6 to 739.61)	661.7 (560.57 to 791.29)	0.14 (-0.02 to 0.3)
Central African Republic	793 (679 to 932)	1667 (1434 to 1924)	1.1 (0.98-1.24)	38.18 (33.68 to 44.06)	41.42 (36.64 to 47.13)	0.37 (-0.28 to 1.04)
Chad	1704 (1441 to 1990)	4871 (4042 to 5902)	1.86 (1.62-2.09)	35.54 (30.99 to 40.88)	39.28 (33.91 to 45.57)	0.32 (-0.36 to 1)
Chile	23432 (20152 to 27411)	40283 (35143 to 47733)	0.72 (0.56-0.9)	202.13 (174.12 to 236.45)	184.24 (160.68 to 216.48)	-0.43 (-0.73 to -0.14)
China	7551313 (6468733 to 8829069)	18642299 (15530472 to 22544543)	1.47 (1.29-1.69)	734.35 (624.33 to 855.51)	983.15 (827.97 to 1166.37)	1.25 (1.11 to 1.4)
Colombia	219170 (186978 to 254938)	502908 (428068 to 593539)	1.29 (1.09-1.52)	823.41 (711.61 to 954.21)	979.36 (833.57 to 1154.72)	0.59 (0.46 to 0.73)
Comoros	139 (119 to 162)	320 (279 to 373)	1.3 (1.1-1.49)	40.43 (35.48 to 46.86)	51.86 (45.85 to 60.22)	0.92 (0.31 to 1.54)
Congo	708 (593 to 837)	1981 (1670 to 2331)	1.8 (1.59-2.03)	38.37 (33.53 to 44.61)	46.49 (40.5 to 53.68)	0.82 (0.17 to 1.46)
Cook Islands	27 (23 to 32)	39 (33 to 47)	0.46 (0.33-0.6)	172.24 (149.08 to 203.7)	185.82 (159.63 to 220.99)	0.28 (-0.03 to 0.59)
Costa Rica	21765 (18465 to 25562)	48763 (41893 to 57458)	1.24 (1.06-1.47)	888.26 (762.49 to 1043.08)	948.29 (817.05 to 1117.06)	0.27 (0.13 to 0.41)
Côte d'Ivoire	3392 (2784 to 4115)	8733 (7207 to 10639)	1.57 (1.38-1.81)	34.9 (29.93 to 40.72)	40.85 (35.25 to 48.16)	0.51 (-0.17 to 1.19)
Croatia	58666 (50626 to 69171)	69072 (59548 to 80288)	0.18 (0.07-0.29)	989.18 (858.87 to 1158.5)	1104.42 (951.98 to 1287.42)	0.46 (0.34 to 0.59)
Cuba	38963 (33718 to 45703)	50447 (43574 to 59379)	0.29 (0.18-0.41)	359.95 (313.07 to 421.08)	344.97 (295.76 to 408.87)	-0.1 (-0.33 to 0.12)

Cyprus	2643 (2256 to 3104)	5947 (4971 to 7207)	1.25 (1.06-1.46)	327.67 (281.52 to 382.26)	343.02 (287.39 to 415.44)	0.66 (0.45 to 0.86)
Czechia	149863 (131355 to 174113)	185741 (159881 to 221389)	0.24 (0.15-0.35)	1218.27 (1068.25 to 1416.28)	1196.04 (1028.39 to 1414.16)	0.04 (-0.08 to 0.15)
Democratic People's Republic of Korea	63121 (54461 to 75203)	97383 (83336 to 114980)	0.54 (0.42-0.68)	332.92 (288.29 to 393.87)	307.14 (264.47 to 359.36)	-0.31 (-0.54 to -0.08)
Democratic Republic of the Congo	11313 (9641 to 13175)	30719 (26112 to 36249)	1.72 (1.49-1.9)	40.74 (35.79 to 46.84)	48.26 (42.45 to 56.49)	0.66 (0.04 to 1.29)
Denmark	45040 (39097 to 53316)	45577 (38245 to 54694)	0.01 (-0.09-0.1)	683.37 (587.15 to 804.82)	550.3 (460.02 to 659.95)	-0.91 (-1.08 to -0.75)
Djibouti	129 (106 to 154)	448 (376 to 534)	2.48 (2.17-2.84)	38.55 (33.63 to 44.47)	45.01 (38.97 to 52.92)	0.64 (-0.01 to 1.29)
Dominica	201 (175 to 237)	214 (184 to 250)	0.07 (-0.03-0.15)	303.88 (262.92 to 358.16)	278.65 (239.52 to 326.32)	-0.23 (-0.47 to 0.01)
Dominican Republic	14747 (12305 to 17630)	29446 (24979 to 34863)	1 (0.77-1.2)	256.63 (219.77 to 300.7)	276.88 (237.37 to 326.21)	0.34 (0.08 to 0.59)
Ecuador	16823 (14620 to 19676)	44458 (37975 to 52462)	1.64 (1.41-1.88)	214.3 (188.11 to 248.94)	265.67 (227.54 to 312.22)	0.78 (0.51 to 1.05)
Egypt	110625 (95294 to 130621)	252064 (217444 to 295276)	1.28 (1.06-1.49)	274.1 (236.8 to 321.56)	299.89 (261.76 to 351.83)	0.29 (0.04 to 0.53)
El Salvador	33735 (29372 to 39421)	56715 (48577 to 67158)	0.68 (0.54-0.85)	838.89 (736.72 to 969.5)	929.11 (796.62 to 1097.83)	0.3 (0.16 to 0.44)
Equatorial Guinea	112 (96 to 131)	521 (431 to 622)	3.67 (3.22-4.12)	35.01 (30.96 to 40.37)	52.55 (45.72 to 61.1)	1.36 (0.74 to 1.98)
Eritrea	688 (584 to 810)	2302 (1970 to 2731)	2.35 (2.1-2.6)	32.19 (28.4 to 36.95)	47.05 (41.64 to 55.29)	1.35 (0.69 to 2.02)
Estonia	17203 (15037 to 20204)	16717 (14076 to 19852)	-0.03 (-0.12-0.08)	930.58 (811.97 to 1092.94)	908.51 (765.73 to 1082.44)	-0.15 (-0.28 to -0.01)
Eswatini	495 (417 to 584)	902 (770 to 1061)	0.82 (0.67-0.97)	88.11 (77.34 to 103.45)	96.66 (84.84 to 112.61)	0.35 (-0.09 to 0.78)
Ethiopia	14607 (12294 to 17628)	43123 (35343 to 52543)	1.95 (1.76-2.15)	38.11 (32.88 to 45.45)	54.72 (46.23 to 64.89)	1.41 (0.78 to 2.03)

Fiji	836 (707 to 1000)	1372 (1189 to 1620)	0.64 (0.51-0.82)	143.25 (124.43 to 167.72)	156.12 (136.68 to 182.3)	0.36 (0.02 to 0.7)
Finland	29139 (24833 to 34394)	37901 (32420 to 45440)	0.3 (0.19-0.43)	458.49 (389.26 to 540.41)	455.34 (383.64 to 552.65)	-0.29 (-0.46 to -0.12)
France	332744 (290385 to 392238)	359969 (308605 to 426501)	0.08 (0-0.18)	459.19 (399.66 to 544.87)	371.36 (315.88 to 448.88)	-1.02 (-1.23 to -0.82)
Gabon	330 (282 to 387)	731 (621 to 864)	1.22 (1.07-1.41)	42.52 (37.35 to 49.66)	48.94 (42.53 to 57.47)	0.5 (-0.12 to 1.11)
Gambia	292 (241 to 347)	759 (617 to 903)	1.59 (1.38-1.81)	37.47 (32.13 to 43.44)	41.73 (35.76 to 49.05)	0.37 (-0.29 to 1.03)
Georgia	22846 (18869 to 27444)	21471 (18013 to 26037)	-0.06 (-0.13-0.03)	386.87 (319.33 to 463.4)	468.72 (394.73 to 566.28)	0.88 (0.68 to 1.09)
Germany	747252 (646949 to 885460)	830298 (711287 to 1011345)	0.11 (0.01-0.22)	700.94 (600.2 to 830.56)	627.85 (533.56 to 763.45)	-0.3 (-0.45 to -0.15)
Ghana	4579 (3809 to 5524)	12493 (10417 to 14876)	1.73 (1.5-1.99)	37.64 (32.31 to 43.95)	46.03 (39.78 to 53.99)	0.74 (0.09 to 1.39)
Greece	48748 (41117 to 58455)	68207 (58584 to 81180)	0.4 (0.29-0.53)	377.35 (317.04 to 452.35)	420.18 (358.88 to 506.27)	0.39 (0.18 to 0.6)
Greenland	310 (264 to 366)	413 (359 to 480)	0.33 (0.21-0.48)	608.22 (531.91 to 709.69)	625.24 (544.37 to 726.4)	0.06 (-0.11 to 0.22)
Grenada	227 (198 to 268)	349 (299 to 414)	0.53 (0.4-0.69)	318.38 (278.48 to 372.86)	310.52 (267.97 to 368.8)	-0.07 (-0.31 to 0.16)
Guam	185 (153 to 224)	287 (244 to 349)	0.55 (0.41-0.73)	160.42 (134.76 to 191.31)	159.14 (134.71 to 191.34)	-0.06 (-0.39 to 0.27)
Guatemala	42057 (36421 to 49051)	134239 (114027 to 159653)	2.19 (1.95-2.57)	725.79 (637.18 to 848.33)	882.89 (765.22 to 1047.5)	0.63 (0.49 to 0.78)
Guinea	1755 (1488 to 2081)	3915 (3245 to 4711)	1.23 (1.07-1.41)	33.84 (29.33 to 39.62)	38.4 (33.08 to 45.33)	0.43 (-0.25 to 1.13)
Guinea-Bissau	272 (228 to 325)	602 (500 to 712)	1.21 (1.02-1.39)	33.23 (28.92 to 38.88)	38.78 (33.57 to 44.46)	0.59 (-0.1 to 1.29)
Guyana	1918 (1649 to 2245)	2351 (2023 to 2759)	0.23 (0.12-0.34)	319.81 (280.9 to 374.64)	314.48 (271.99 to 365.91)	0.02 (-0.21 to 0.25)

Haiti	12005 (10382 to 14132)	30022 (25670 to 35369)	1.5 (1.31-1.7)	239.56 (211.85 to 279.38)	282.47 (245.93 to 328.22)	0.71 (0.46 to 0.97)
Honduras	28881 (25054 to 34196)	87404 (74928 to 103000)	2.03 (1.79-2.3)	870.33 (768.45 to 1021.28)	1038.04 (906.14 to 1213.89)	0.53 (0.4 to 0.67)
Hungary	151225 (130043 to 177985)	167451 (145582 to 198793)	0.11 (0.02-0.24)	1174.49 (1008.36 to 1372.76)	1173.54 (1012.9 to 1383.65)	-0.09 (-0.21 to 0.03)
Iceland	690 (583 to 825)	1144 (956 to 1371)	0.66 (0.51-0.82)	259.97 (218.25 to 312.26)	256.79 (214.41 to 309.06)	0.93 (0.69 to 1.17)
India	1321988 (1109570 to 1559568)	5019383 (4243820 to 5947198)	2.8 (2.6-3.02)	191.82 (164.64 to 225.37)	377.52 (320.64 to 444.64)	3.18 (2.92 to 3.45)
Indonesia	301822 (254097 to 364320)	669895 (557637 to 796658)	1.22 (1.08-1.35)	205.84 (174.59 to 246.98)	253.32 (212.97 to 299.01)	0.77 (0.49 to 1.05)
Iran (Islamic Republic of)	151908 (127034 to 180013)	416858 (344912 to 502490)	1.74 (1.55-1.92)	397.79 (334.13 to 470.47)	484.21 (405.67 to 575.14)	0.68 (0.5 to 0.86)
Iraq	22524 (19097 to 26653)	75271 (62932 to 90437)	2.34 (2.03-2.66)	199.28 (171.64 to 233.55)	220.83 (187.29 to 263.89)	0.42 (0.13 to 0.71)
Ireland	14668 (12417 to 17318)	26628 (22364 to 32035)	0.82 (0.66-0.99)	395.98 (334.82 to 468.29)	421.8 (352.91 to 506.19)	0.19 (-0.01 to 0.4)
Israel	18433 (15510 to 21644)	43699 (36791 to 52183)	1.37 (1.19-1.59)	395.49 (333.05 to 464.45)	430.85 (360.9 to 516.62)	0.27 (0.07 to 0.47)
Italy	1098119 (928601 to 1301052)	1590986 (1335569 to 1888089)	0.45 (0.39-0.51)	1497.41 (1264.95 to 1764.4)	1718.36 (1441.49 to 2039.23)	0.69 (0.58 to 0.8)
Jamaica	5943 (5050 to 6973)	8842 (7603 to 10310)	0.49 (0.36-0.61)	298.41 (255.61 to 350.89)	296.02 (254.77 to 345.33)	0.09 (-0.15 to 0.33)
Japan	1993172 (1681678 to 2363871)	3393915 (2867532 to 4028095)	0.7 (0.58-0.85)	1310.43 (1116.31 to 1535.48)	1614.18 (1366.14 to 1898.78)	1.07 (0.96 to 1.18)
Jordan	5320 (4578 to 6246)	24204 (20148 to 29080)	3.55 (3.12-4.04)	242.67 (210.95 to 282.94)	253.78 (215.19 to 304.72)	0.12 (-0.14 to 0.38)
Kazakhstan	66513 (57772 to 78338)	85546 (74063 to 102948)	0.29 (0.17-0.43)	451.28 (394.27 to 529.69)	447.71 (388.36 to 533.56)	-0.01 (-0.2 to 0.18)
Kenya	8721 (7262 to 10384)	23991 (19933 to 28964)	1.75 (1.62-1.87)	55.26 (47.43 to 64.74)	63.2 (53.81 to 74.96)	0.42 (-0.12 to 0.97)

Kiribati	87 (75 to 103)	164 (141 to 194)	0.89 (0.77-1.02)	153.66 (135.59 to 180.66)	166.8 (146.55 to 195.44)	0.33 (0 to 0.65)
Kuwait	2739 (2270 to 3340)	11736 (9582 to 14709)	3.28 (2.79-3.79)	202.48 (174.53 to 244.41)	241.06 (204.71 to 289.54)	0.6 (0.31 to 0.88)
Kyrgyzstan	14712 (12853 to 16964)	23736 (20134 to 28169)	0.61 (0.48-0.77)	411.42 (359.15 to 478.75)	400.46 (344.52 to 471.53)	-0.07 (-0.28 to 0.13)
Lao People's Democratic Republic	4839 (4201 to 5582)	13238 (11430 to 15604)	1.74 (1.54-1.98)	157.08 (139.08 to 182.15)	211.14 (185.74 to 246.88)	1.07 (0.76 to 1.37)
Latvia	35741 (30914 to 41712)	30906 (26852 to 36202)	-0.14 (-0.21--0.06)	1114.32 (960.03 to 1301.97)	1101.82 (943.7 to 1293.9)	0.17 (0.05 to 0.29)
Lebanon	5791 (4871 to 6879)	14571 (12281 to 17496)	1.52 (1.29-1.74)	218.62 (185.8 to 261.32)	273.77 (230.73 to 328.53)	0.84 (0.58 to 1.11)
Lesotho	1205 (1033 to 1408)	1743 (1487 to 2055)	0.45 (0.34-0.55)	86.25 (75.58 to 100.49)	94.21 (81.97 to 109.17)	0.36 (-0.08 to 0.8)
Liberia	546 (460 to 654)	1597 (1308 to 1922)	1.92 (1.67-2.2)	32.29 (27.9 to 37.74)	39.62 (33.7 to 46.6)	0.74 (0.05 to 1.44)
Libya	5548 (4715 to 6570)	16122 (13359 to 19745)	1.91 (1.64-2.2)	202.72 (175.66 to 239.11)	231.38 (196.91 to 276.53)	0.44 (0.16 to 0.72)
Lithuania	49715 (43090 to 58445)	50495 (43555 to 58838)	0.02 (-0.08-0.13)	1184.52 (1025.55 to 1386.85)	1214.84 (1044.9 to 1417.39)	0.23 (0.11 to 0.34)
Luxembourg	2220 (1902 to 2645)	3933 (3293 to 4735)	0.77 (0.63-0.95)	456.13 (389.6 to 544.13)	461.78 (385.11 to 558.27)	-0.06 (-0.23 to 0.11)
Madagascar	3150 (2664 to 3750)	8717 (7288 to 10414)	1.77 (1.58-1.98)	35.01 (30.62 to 40.63)	43.54 (37.97 to 50.99)	0.8 (0.13 to 1.47)
Malawi	2732 (2287 to 3314)	6558 (5545 to 7692)	1.4 (1.22-1.61)	40.69 (35.53 to 47.66)	51.13 (45.18 to 59.25)	0.88 (0.25 to 1.51)
Malaysia	31816 (27301 to 37644)	83210 (70170 to 100795)	1.62 (1.36-1.84)	233.78 (202.58 to 273.81)	266.68 (226.32 to 320.37)	0.42 (0.16 to 0.68)
Maldives	248 (210 to 293)	1069 (852 to 1331)	3.31 (2.82-3.81)	163.42 (139.91 to 192.26)	207.1 (168.83 to 252.18)	0.86 (0.55 to 1.16)
Mali	2454 (2065 to 2898)	7459 (6196 to 8875)	2.04 (1.82-2.29)	34.2 (29.62 to 40.22)	44.24 (38.15 to 51.62)	0.95 (0.29 to 1.62)

Malta	814 (681 to 972)	1349 (1135 to 1619)	0.66 (0.51-0.8)	195.01 (163.7 to 231.82)	202.7 (170.5 to 241.94)	0.86 (0.58 to 1.13)
Marshall Islands	45 (39 to 53)	83 (71 to 96)	0.84 (0.69-1)	159.44 (139.59 to 188.39)	169.2 (147.53 to 194.46)	0.22 (-0.1 to 0.55)
Mauritania	596 (499 to 709)	1445 (1197 to 1737)	1.42 (1.23-1.66)	34.86 (30.24 to 40.32)	42.47 (36.29 to 49.57)	0.63 (-0.04 to 1.3)
Mauritius	1989 (1668 to 2358)	3506 (2945 to 4239)	0.76 (0.57-0.96)	198.56 (168.97 to 236.74)	224.15 (188.05 to 269.61)	0.41 (0.12 to 0.7)
Mexico	698958 (579396 to 831323)	1641467 (1373738 to 1944025)	1.35 (1.18-1.5)	1064.93 (903.39 to 1258.32)	1288.75 (1082.77 to 1519.9)	1.14 (1.03 to 1.26)
Micronesia (Federated States of)	117 (100 to 138)	166 (144 to 195)	0.42 (0.29-0.55)	167.1 (145.58 to 199.94)	184.34 (162.01 to 214.53)	0.33 (0.02 to 0.64)
Monaco	191 (163 to 225)	261 (223 to 313)	0.37 (0.27-0.47)	400.06 (339.69 to 484.73)	426.14 (358.89 to 518.82)	0.24 (0.03 to 0.44)
Mongolia	6628 (5741 to 7828)	14556 (12461 to 17279)	1.2 (1.01-1.42)	443.16 (386.54 to 518.34)	449.51 (392.19 to 525.38)	0.01 (-0.19 to 0.2)
Montenegro	5786 (4877 to 6919)	7588 (6406 to 9020)	0.31 (0.2-0.43)	896.41 (757.05 to 1063.87)	955.05 (812.06 to 1132.45)	0.28 (0.14 to 0.42)
Morocco	35452 (30446 to 41303)	83147 (70918 to 101601)	1.35 (1.13-1.53)	190.61 (165 to 221.85)	229.91 (197.89 to 278.19)	0.68 (0.4 to 0.97)
Mozambique	3676 (3171 to 4273)	10513 (8926 to 12546)	1.86 (1.67-2.04)	37.67 (33.41 to 43.5)	52.54 (46.35 to 60.97)	1.22 (0.58 to 1.85)
Myanmar	54913 (46882 to 65030)	109371 (92998 to 130409)	0.99 (0.81-1.19)	166.58 (144.22 to 196.22)	200.26 (171.92 to 237.19)	0.62 (0.32 to 0.93)
Namibia	960 (823 to 1115)	2180 (1868 to 2576)	1.27 (1.08-1.44)	90.41 (78.65 to 104.41)	108.87 (95.14 to 127.61)	0.7 (0.29 to 1.12)
Nauru	12 (10 to 14)	15 (13 to 18)	0.22 (0.14-0.31)	176.07 (154.2 to 204.58)	192.83 (168.01 to 223.02)	0.33 (0.03 to 0.64)
Nepal	9610 (8200 to 11317)	22891 (19300 to 27037)	1.38 (1.17-1.61)	64.5 (55.9 to 75.93)	83.16 (71.15 to 97.86)	1.59 (1.13 to 2.05)
Netherlands	76153 (65232 to 90985)	107838 (91959 to 131511)	0.42 (0.29-0.55)	421.72 (360.23 to 505.78)	430.35 (363.68 to 526.44)	0.03 (-0.17 to 0.23)

		57507		702.23	1020.31	1.37
New Zealand	25663 (21596 to 30666)	(47747 to 68877)	1.24 (1.01-1.49)	(587.12 to 839.07)	(852.88 to 1219.84)	(1.23 to 1.5)
Nicaragua	20072 (16887 to 23523)	51950 (44348 to 61223)	1.59 (1.33-1.84)	756.69 (652.75 to 880.47)	867.53 (747.44 to 1012.95)	0.49 (0.34 to 0.64)
Niger	2151 (1783 to 2544)	7455 (6184 to 8852)	2.47 (2.22-2.71)	34.01 (29.37 to 39.21)	44.24 (38.36 to 51.09)	0.96 (0.3 to 1.64)
Nigeria	38333 (31744 to 46362)	108057 (89062 to 131852)	1.82 (1.74-1.89)	50.68 (43.17 to 59.43)	62.98 (53.53 to 74.02)	0.74 (0.18 to 1.29)
Niue	4 (3 to 5)	4 (3 to 4)	-0.05 (-0.12-0.03)	183.94 (159.15 to 217.73)	191.39 (166.79 to 226.19)	0.16 (-0.14 to 0.47)
North Macedonia	17400 (14926 to 20690)	26147 (21948 to 31077)	0.5 (0.37-0.63)	855.35 (737.73 to 1012.72)	938.02 (788 to 1105.05)	0.27 (0.13 to 0.41)
Northern Mariana Islands	77 (64 to 92)	123 (106 to 149)	0.6 (0.4-0.83)	213.1 (186.76 to 251.05)	232.95 (203.24 to 275.31)	0.29 (0.01 to 0.56)
Norway	63270 (53222 to 74599)	88871 (73817 to 107750)	0.4 (0.35-0.47)	1166.15 (976.66 to 1380.64)	1186.13 (989.83 to 1434.13)	1.28 (1.17 to 1.4)
Oman	2352 (1936 to 2841)	8092 (6508 to 9903)	2.44 (2.13-2.79)	189.91 (162.67 to 227.02)	209.63 (175.43 to 250.43)	0.23 (-0.06 to 0.53)
Pakistan	117751 (99230 to 138809)	279912 (230851 to 330227)	1.38 (1.23-1.54)	143 (122.09 to 168.95)	162.8 (137.44 to 191.12)	0.5 (0.16 to 0.84)
Palau	24 (20 to 28)	43 (37 to 51)	0.8 (0.62-1)	182.91 (158.65 to 217.33)	190.75 (165.66 to 226.4)	0.13 (-0.17 to 0.43)
Palestine	2768 (2353 to 3279)	8631 (7210 to 10188)	2.12 (1.84-2.41)	231.42 (200.98 to 277.55)	241.47 (204.65 to 282.35)	0.15 (-0.12 to 0.42)
Panama	16476 (13988 to 19477)	35393 (30222 to 41863)	1.15 (0.97-1.37)	818.21 (705.68 to 960.21)	840.98 (718.22 to 994.62)	0.05 (-0.09 to 0.19)
Papua New Guinea	3563 (3007 to 4190)	10260 (8643 to 12093)	1.88 (1.66-2.13)	118.82 (103.02 to 139.49)	131.55 (112.89 to 154.49)	0.37 (0 to 0.74)
Paraguay	17662 (15191 to 20786)	43234 (37178 to 51267)	1.45 (1.29-1.63)	575.25 (500.8 to 672.76)	658.74 (570.45 to 778.38)	0.48 (0.31 to 0.64)
Peru	52265 (45195 to 61274)	84580 (72304 to 100711)	0.62 (0.46-0.79)	308.12 (269.62 to 358.44)	247.67 (213.05 to 293.78)	-1.24 (-1.49 to -1)
Philippines	138127 (115047 to 164989)	364362 (301934 to 435093)	1.64 (1.52-1.74)	290.73 (246.17 to 344.73)	360.07 (303.77 to 427.99)	0.96 (0.73 to 1.2)

Poland	401233 (338783 to 470953)	442220 (372910 to 528287)	0.1 (0.03- 0.19)	963.96 (815.7 to 1127.82)	804.82 (683.53 to 948.49)	-0.82 (- 0.95 to - 0.69)
Portugal	18054 (15425 to 21602)	35582 (30944 to 41922)	0.97 (0.81- 1.14)	151.42 (129.41 to 181.92)	218.27 (186.89 to 259.21)	1.62 (1.31 to 1.93)
Puerto Rico	13088 (11276 to 15541)	16286 (13956 to 19171)	0.24 (0.14- 0.36)	362.96 (312.95 to 430.28)	356.97 (302.13 to 421.43)	0 (-0.22 to 0.22)
Qatar	579 (470 to 717)	5064 (4115 to 6387)	7.75 (6.89- 8.56)	170.36 (147.31 to 200.23)	188.25 (160.39 to 225.51)	0.25 (- 0.06 to 0.55)
Republic of Korea	397572 (338529 to 463389)	788133 (667010 to 947724)	0.98 (0.78- 1.21)	1045.05 (900.33 to 1200.77)	1040.4 (878.58 to 1230.76)	-0.17 (- 0.3 to - 0.04)
Republic of Moldova	39054 (33757 to 45417)	40437 (34834 to 47856)	0.04 (- 0.05-0.14)	859.31 (743.04 to 1000.07)	826.2 (707.69 to 975.37)	-0.22 (- 0.37 to - 0.08)
Romania	292409 (253070 to 335484)	309796 (266796 to 362988)	0.06 (- 0.05-0.17)	1113.68 (963.58 to 1281.11)	1142.91 (985.76 to 1336.64)	0.32 (0.2 to 0.45)
Russian Federation	1160225 (980644 to 1362035)	1332176 (1112940 to 1575417)	0.15 (0.1- 0.2)	685.1 (583.28 to 799.7)	693.51 (581.75 to 813.24)	0.09 (- 0.07 to 0.25)
Rwanda	2068 (1767 to 2392)	5345 (4560 to 6290)	1.58 (1.37- 1.81)	40.93 (36.41 to 46.44)	57.05 (50.49 to 66.03)	1.33 (0.73 to 1.94)
Saint Kitts and Nevis	145 (127 to 169)	246 (214 to 294)	0.7 (0.53- 0.87)	410.39 (359.4 to 484.14)	359.67 (313.45 to 427.61)	-0.48 (- 0.69 to - 0.27)
Saint Lucia	320 (272 to 377)	599 (503 to 719)	0.87 (0.69- 1.06)	293.97 (253.63 to 344.04)	295.36 (248.7 to 353.03)	0.06 (- 0.18 to 0.3)
Saint Vincent and the Grenadines	269 (227 to 317)	368 (321 to 436)	0.37 (0.24- 0.52)	309.59 (264.99 to 364.09)	293.88 (254.62 to 345.36)	-0.14 (- 0.38 to 0.1)
Samoa	199 (172 to 238)	320 (277 to 375)	0.61 (0.5- 0.73)	172.61 (149.76 to 203.67)	181.7 (157.99 to 213.29)	0.18 (- 0.12 to 0.49)
San Marino	100 (84 to 119)	174 (146 to 208)	0.75 (0.61- 0.9)	355.06 (296.06 to 429.26)	382.12 (315.77 to 459.03)	0.24 (0.02 to 0.45)
Sao Tome and Principe	38 (32 to 45)	75 (62 to 89)	0.98 (0.83- 1.18)	38.1 (32.98 to 44.53)	41.46 (35.21 to 48.85)	0.23 (- 0.43 to 0.89)
Saudi Arabia	23318 (19879 to 27620)	86825 (72064 to 105964)	2.72 (2.38- 3.2)	230.8 (201.4 to 270.65)	250.78 (215.73 to 299.84)	0.23 (- 0.04 to 0.49)

Senegal	2168 (1802 to 2607)	5260 (4368 to 6098)	1.43 (1.22-1.65)	35.17 (30.53 to 41.75)	41.64 (35.57 to 48.58)	0.59 (-0.09 to 1.26)
Serbia	93448 (79498 to 110555)	115286 (99447 to 136258)	0.23 (0.13-0.34)	855.33 (729.54 to 1003.04)	960.08 (822.46 to 1135.71)	0.58 (0.44 to 0.72)
Seychelles	118 (101 to 141)	245 (206 to 297)	1.08 (0.87-1.27)	187.27 (161.03 to 223.76)	209.6 (177.68 to 249.43)	0.32 (0.03 to 0.62)
Sierra Leone	1026 (855 to 1209)	2852 (2361 to 3422)	1.78 (1.57-2.02)	32.79 (28.21 to 38.35)	42.12 (36.41 to 48.97)	1.01 (0.32 to 1.7)
Singapore	28095 (23981 to 33179)	74759 (63114 to 89111)	1.66 (1.42-1.9)	982.28 (851.41 to 1149.59)	999.26 (850.11 to 1193.72)	0.04 (-0.1 to 0.17)
Slovakia	85687 (73689 to 99725)	105458 (90905 to 122380)	0.23 (0.11-0.34)	1509.47 (1297.15 to 1756.08)	1411.5 (1219.56 to 1628.64)	-0.28 (-0.39 to -0.18)
Slovenia	24338 (21129 to 28322)	33413 (28924 to 39241)	0.37 (0.26-0.49)	1058.25 (920.41 to 1232.55)	1074.36 (925.57 to 1266.17)	0.34 (0.21 to 0.46)
Solomon Islands	358 (304 to 416)	874 (748 to 1030)	1.44 (1.27-1.62)	156.38 (137.14 to 181.27)	173.58 (151.87 to 203.66)	0.35 (0.03 to 0.67)
Somalia	1648 (1406 to 1949)	5335 (4466 to 6283)	2.24 (2.04-2.46)	31.53 (27.84 to 36.04)	38.06 (33.42 to 43.73)	0.8 (0.09 to 1.52)
South Africa	33322 (27710 to 39823)	62361 (52330 to 75208)	0.87 (0.77-0.98)	107.92 (90.9 to 128.59)	115.51 (97.64 to 137.25)	0.34 (-0.06 to 0.73)
South Sudan	1474 (1242 to 1749)	2679 (2246 to 3216)	0.82 (0.7-0.95)	34.31 (30.2 to 39.66)	39.1 (33.84 to 45.77)	0.51 (-0.18 to 1.2)
Spain	154063 (132755 to 184846)	210412 (177501 to 252093)	0.37 (0.24-0.5)	333.98 (285.54 to 403.05)	303.23 (254.59 to 364.82)	-0.48 (-0.72 to -0.25)
Sri Lanka	28269 (23361 to 33862)	54429 (45355 to 66872)	0.93 (0.74-1.11)	184.16 (153.87 to 221.05)	224.79 (187.7 to 276.03)	0.71 (0.41 to 1.01)
Sudan	23657 (20142 to 28097)	61371 (51619 to 73953)	1.59 (1.38-1.84)	178.14 (152.86 to 212.07)	209.45 (179.78 to 248.17)	0.58 (0.28 to 0.88)
Suriname	1024 (893 to 1195)	1889 (1618 to 2230)	0.85 (0.68-1.04)	310.16 (272.46 to 360.94)	310.12 (266.68 to 367)	0.04 (-0.2 to 0.27)
Sweden	73115 (60334 to 88233)	107776 (89597 to 132009)	0.47 (0.35-0.64)	622.59 (512.29 to 752.42)	717.09 (593.14 to 870.44)	0.59 (0.44 to 0.74)
Switzerland	34910 (29612 to 41969)	54290 (45574 to 65508)	0.56 (0.45-0.69)	394.02 (332.5 to 476.52)	416.49 (349.26 to 504.51)	0.05 (-0.12 to 0.23)

Syrian Arab Republic	16016 (13497 to 18826)	34131 (28502 to 41272)	1.13 (0.94-1.35)	204.25 (175.1 to 241.21)	239.68 (202.46 to 286.38)	0.5 (0.22 to 0.78)
Taiwan (Province of China)	51692 (46140 to 57738)	80781 (69007 to 96218)	0.56 (0.39-0.75)	283.1 (253.03 to 316.15)	238.18 (203.99 to 281.14)	-0.22 (-0.49 to 0.04)
Tajikistan	13119 (11297 to 15183)	29376 (24725 to 34543)	1.24 (1.05-1.42)	343.59 (297.57 to 400.4)	370.88 (318.93 to 433.04)	0.29 (0.07 to 0.51)
Thailand	144329 (126853 to 163926)	229591 (198772 to 272374)	0.59 (0.43-0.78)	289.71 (256.24 to 328.76)	251.09 (216.91 to 294.46)	-0.62 (-0.88 to -0.36)
Timor-Leste	936 (805 to 1104)	2316 (2006 to 2748)	1.47 (1.28-1.7)	164.19 (144.76 to 190.76)	226.3 (196.42 to 266.9)	1.15 (0.85 to 1.45)
Togo	1066 (877 to 1276)	2906 (2433 to 3423)	1.73 (1.5-1.95)	37.42 (32.16 to 44.03)	44.5 (38.86 to 51.7)	0.64 (-0.01 to 1.3)
Tokelau	2 (2 to 2)	2 (2 to 3)	0.09 (0-0.17)	153.42 (134.55 to 181.48)	167.92 (145.9 to 198.67)	0.31 (-0.01 to 0.64)
Tonga	128 (110 to 151)	167 (146 to 199)	0.31 (0.22-0.41)	183.52 (158.95 to 216.73)	191.25 (166.95 to 226.24)	0.09 (-0.21 to 0.39)
Trinidad and Tobago	3273 (2811 to 3917)	5045 (4323 to 6045)	0.54 (0.39-0.7)	311.54 (270.16 to 370.54)	308.15 (265.41 to 367.97)	0.03 (-0.21 to 0.26)
Tunisia	8618 (7189 to 10161)	20947 (17760 to 25021)	1.43 (1.19-1.67)	133.1 (111.63 to 156.56)	161.63 (137.52 to 192.15)	-0.15 (-0.47 to 0.18)
Turkey	110558 (95279 to 129097)	272186 (233064 to 323971)	1.46 (1.24-1.7)	240.45 (209.64 to 279)	295.65 (254.13 to 350.54)	1.6 (1.36 to 1.85)
Turkmenistan	10100 (8610 to 12157)	19282 (16522 to 22652)	0.91 (0.73-1.1)	373.53 (323.84 to 443.79)	393.66 (340.09 to 458.86)	0.19 (-0.02 to 0.4)
Tuvalu	13 (11 to 15)	19 (17 to 23)	0.51 (0.4-0.63)	160.91 (139.71 to 187.95)	175.24 (151.28 to 207.5)	0.27 (-0.05 to 0.58)
Uganda	4851 (4089 to 5688)	13500 (11365 to 15871)	1.78 (1.57-1.99)	41.38 (36.37 to 47.84)	49.34 (43.51 to 57.02)	0.67 (0.05 to 1.3)
Ukraine	659547 (545502 to 785553)	604579 (485012 to 733532)	-0.08 (-0.19-0.04)	1045.9 (868.73 to 1240.15)	1000.51 (812.99 to 1216.21)	-0.16 (-0.29 to -0.03)
United Arab Emirates	2216 (1803 to 2675)	18229 (14470 to 22753)	7.23 (6.2-8.31)	167.28 (144.7 to 195.72)	176.77 (152.5 to 208.88)	0.14 (-0.18 to 0.45)

United Kingdom	611933 (513926 to 722218)	1416872 (1197870 to 1659833)	1.32 (1.22- 1.41)	847.52 (712.72 to 1001.29)	1593.45 (1339.08 to 1878.1)	1.02 (0.91 to 1.14)
United Republic of Tanzania	7444 (6294 to 8853)	20023 (16904 to 23649)	1.69 (1.49- 1.89)	40.29 (35.29 to 47.11)	48.6 (42.46 to 57)	0.7 (0.07 to 1.33)
United States of America	3248935 (2718267 to 3834926)	3646531 (3108488 to 4267789)	0.12 (0.05- 0.19)	1134.79 (952.63 to 1350.21)	853.84 (727.96 to 1000.81)	0.41 (0.27 to 0.56)
United States Virgin Islands	373 (320 to 438)	484 (417 to 576)	0.3 (0.18- 0.45)	364.28 (314.64 to 424.77)	366.75 (315.46 to 433.43)	0.13 (- 0.08 to 0.35)
Uruguay	5803 (5036 to 6798)	7729 (6775 to 9117)	0.33 (0.23- 0.43)	169.66 (146.89 to 197.95)	181.11 (157.13 to 215.07)	0.24 (- 0.07 to 0.56)
Uzbekistan	57840 (49219 to 68555)	128974 (108819 to 153751)	1.23 (1.04- 1.46)	380.66 (328.54 to 449.09)	423.21 (362.16 to 500.79)	0.4 (0.19 to 0.61)
Vanuatu	182 (155 to 215)	426 (367 to 502)	1.34 (1.18- 1.52)	174.47 (151.41 to 206.68)	183.39 (160.18 to 216.15)	0.13 (- 0.17 to 0.44)
Venezuela (Bolivarian Republic of)	123314 (104505 to 144791)	265054 (224535 to 313570)	1.15 (0.97- 1.35)	819.36 (705.76 to 959.91)	882.71 (750.04 to 1039.04)	0.22 (0.08 to 0.37)
Viet Nam	113866 (97846 to 135742)	279417 (235006 to 333847)	1.45 (1.19- 1.7)	222.9 (193.88 to 264.26)	262.78 (223.73 to 310.73)	0.58 (0.32 to 0.85)
Yemen	14848 (12599 to 17634)	48678 (41440 to 57705)	2.28 (1.96- 2.59)	190.77 (163.57 to 226.39)	229.67 (198.99 to 267.77)	0.73 (0.44 to 1.02)
Zambia	2240 (1910 to 2677)	6192 (5183 to 7349)	1.76 (1.58- 1.97)	41.13 (36.39 to 47.73)	48.08 (42.2 to 56.19)	0.6 (- 0.03 to 1.23)
Zimbabwe	6259 (5208 to 7414)	10199 (8604 to 12261)	0.63 (0.49- 0.77)	85.32 (73.51 to 100.81)	86.69 (75.04 to 103.08)	0 (-0.46 to 0.46)

Table S2. The Prevalence of gallbladder and biliary diseases between 1990 and 2019 at national level, both sexes

regions	Cases in 1990	Cases in 2019	Change in absolute number (95% UI)	ASRs in 1990	ASRs in 2019	EAPC No. (95% CI)
Afghanistan	154769 (134282 to 184314)	366191 (305337 to 428567)	1.37 (1.15-1.64)	1985.61 (1731.75 to 2365.92)	1797.54 (1537.47 to 2122.36)	-0.37 (-0.46 to -0.28)
Albania	111105 (92477 to 134490)	131344 (109633 to 158832)	0.18 (0.04-0.31)	4226.74 (3570.4 to 5099.88)	3727.49 (3108.92 to 4466.06)	-0.48 (-0.55 to -0.41)
Algeria	206213 (173164 to 250040)	427549 (355952 to 516163)	1.07 (0.87-1.29)	1303.75 (1104.35 to 1566.81)	1067.36 (895.55 to 1284.71)	-0.72 (-0.84 to -0.6)
American Samoa	323 (273 to 381)	506 (431 to 596)	0.57 (0.43-0.7)	986.96 (851.6 to 1163.42)	973.04 (837.03 to 1138.63)	0.11 (-0.02 to 0.24)
Andorra	815 (686 to 990)	1626 (1358 to 1969)	0.99 (0.83-1.17)	1357.73 (1144.86 to 1639.43)	1280.72 (1074.68 to 1547.37)	-0.22 (-0.33 to -0.1)
Angola	29956 (24926 to 35515)	74559 (61977 to 89197)	1.49 (1.26-1.7)	442.11 (376.79 to 515.85)	373.01 (321.57 to 438.38)	-0.66 (-0.87 to -0.46)
Antigua and Barbuda	966 (822 to 1137)	1546 (1302 to 1843)	0.6 (0.46-0.8)	1779.33 (1522.32 to 2094.92)	1498.03 (1270.35 to 1781.39)	-0.56 (-0.66 to -0.46)
Argentina	299922 (257349 to 352224)	386515 (332871 to 461699)	0.29 (0.18-0.4)	932.38 (800.54 to 1096.57)	770.38 (663.06 to 919.84)	-2.04 (-2.17 to -1.9)
Armenia	76941 (65637 to 90998)	84243 (72171 to 99514)	0.09 (-0.01-0.2)	2488.71 (2134.21 to 2924.77)	2236.04 (1914.39 to 2640.35)	-0.36 (-0.44 to -0.27)
Australia	330826 (281163 to 395716)	530969 (446680 to 635873)	0.6 (0.47-0.75)	1778.62 (1507.92 to 2130.17)	1658.95 (1374.04 to 1998.26)	-0.31 (-0.41 to -0.21)

Austria	360661 (309522 to 418766)	351228 (302573 to 420856)	-0.03 (-0.1- 0.07)	3559.04 (3028.68 to 4147.01)	2549.66 (2173.54 to 3082.19)	-1.23 (- 1.3 to - 1.16)
Azerbaijan	146573 (125189 to 174385)	220694 (187411 to 266392)	0.51 (0.37- 0.68)	2458.94 (2126.59 to 2899.88)	1981.38 (1701.01 to 2374.06)	-0.84 (- 0.93 to - 0.75)
Bahamas	4126 (3458 to 4921)	6952 (5905 to 8244)	0.68 (0.53- 0.86)	1976.43 (1691.66 to 2339.89)	1652.45 (1409.41 to 1951.46)	-0.59 (- 0.69 to - 0.49)
Bahrain	4383 (3672 to 5295)	14916 (12103 to 18508)	2.4 (1.97- 2.86)	1409.88 (1215.16 to 1653.91)	945.93 (792.74 to 1133.86)	-1.6 (- 1.72 to - 1.48)
Bangladesh	672098 (557622 to 799602)	1221948 (1016505 to 1443194)	0.82 (0.64- 0.99)	956.13 (814.5 to 1139.93)	813.62 (683.86 to 952.26)	-0.57 (- 0.71 to - 0.43)
Barbados	4340 (3697 to 5100)	5382 (4581 to 6421)	0.24 (0.12- 0.38)	1678.26 (1427.34 to 1983.92)	1402.61 (1182.51 to 1665.63)	-0.54 (- 0.65 to - 0.43)
Belarus	547473 (467940 to 647006)	486988 (415647 to 583500)	-0.11 (-0.2- -0.03)	4489.28 (3858.5 to 5286.05)	3640.91 (3125.31 to 4333.5)	-0.76 (- 0.83 to - 0.7)
Belgium	192125 (165543 to 229183)	218391 (184378 to 261679)	0.14 (0.01- 0.26)	1461.74 (1253.93 to 1755.07)	1282.37 (1071.93 to 1561.2)	0.22 (0.12 to 0.32)
Belize	2415 (2044 to 2813)	6224 (5257 to 7369)	1.58 (1.31- 1.85)	1954.78 (1691.63 to 2269.38)	1716.48 (1469.82 to 2003.82)	-0.35 (- 0.45 to - 0.26)
Benin	12372 (10226 to 14893)	30928 (25113 to 37947)	1.5 (1.29- 1.7)	368.01 (309.75 to 437.3)	340.77 (287.93 to 407.72)	-0.37 (- 0.59 to - 0.15)
Bermuda	1015 (866 to 1195)	1103 (923 to 1328)	0.09 (- 0.03-0.22)	1541.23 (1318.82 to 1812.89)	1239.29 (1037.91 to 1493.95)	-0.73 (- 0.85 to - 0.62)

Bhutan	4073 (3400 to 4885)	5218 (4393 to 6252)	0.28 (0.13-0.44)	1066.85 (909.48 to 1262.09)	751.47 (639.53 to 894.87)	-1.36 (-1.5 to -1.22)
Bolivia (Plurinational State of)	88562 (75566 to 103111)	148782 (127265 to 174994)	0.68 (0.53-0.84)	2010.37 (1743.01 to 2341.66)	1419.5 (1223.28 to 1659.32)	-1.26 (-1.36 to -1.16)
Bosnia and Herzegovina	235353 (202456 to 277113)	200706 (172467 to 236849)	-0.15 (-0.22--0.06)	5142.54 (4461.59 to 6034.88)	4156.7 (3572.26 to 4860.26)	-0.81 (-0.87 to -0.75)
Botswana	7076 (5974 to 8406)	13554 (11408 to 16281)	0.92 (0.75-1.09)	820.01 (705.92 to 962.94)	667.68 (574.45 to 802.15)	0.32 (0.19 to 0.45)
Brazil	3896762 (3317020 to 4621259)	9259885 (7909619 to 10949465)	1.38 (1.25-1.48)	3373.2 (2921.55 to 3921.42)	3820.01 (3281.39 to 4495.07)	0.24 (0.17 to 0.3)
Brunei Darussalam	8330 (7013 to 9853)	18034 (15297 to 21459)	1.17 (0.97-1.36)	5126.74 (4456.58 to 5985.55)	4423.03 (3824.77 to 5158.55)	-0.56 (-0.62 to -0.5)
Bulgaria	490442 (426219 to 578969)	417473 (352539 to 496807)	-0.15 (-0.24--0.07)	4438.02 (3842.57 to 5159.38)	3938.41 (3313.01 to 4689.79)	-0.46 (-0.53 to -0.4)
Burkina Faso	25751 (21454 to 30823)	58866 (48688 to 70093)	1.29 (1.12-1.48)	380.06 (321.86 to 448.64)	360.79 (308.1 to 427.68)	-0.2 (-0.42 to 0.02)
Burundi	16117 (13492 to 19663)	31016 (25818 to 37033)	0.92 (0.79-1.07)	448.19 (386.11 to 538.69)	397.12 (342.86 to 471.27)	-0.49 (-0.69 to -0.28)
Cabo Verde	810 (673 to 967)	1303 (1049 to 1567)	0.61 (0.46-0.77)	296.91 (249.03 to 349.95)	241.78 (196.6 to 290.47)	-0.84 (-1.09 to -0.59)
Cambodia	126027 (107922 to 147792)	216358 (182265 to 263248)	0.72 (0.56-0.88)	2002.79 (1734.91 to 2345.51)	1482.83 (1259.4 to 1786.58)	-1.2 (-1.3 to -1.1)

Cameroon	27953 (23197 to 33485)	72843 (59664 to 87842)	1.61 (1.38- 1.81)	374.47 (315.9 to 444.6)	329.84 (278.89 to 390.03)	-0.6 (- 0.82 to - 0.38)
Canada	697173 (596791 to 820082)	1070509 (910611 to 1280403)	0.54 (0.4- 0.68)	2245.7 (1924.74 to 2636.85)	2104.8 (1772.63 to 2522.01)	-0.26 (- 0.35 to - 0.18)
Central African Republic	9809 (8257 to 11720)	19144 (16062 to 22407)	0.95 (0.82- 1.09)	534.08 (457.5 to 632.54)	525.47 (453.05 to 613.83)	-0.09 (- 0.27 to 0.09)
Chad	17496 (14571 to 20486)	41682 (34220 to 51019)	1.38 (1.17- 1.59)	415.46 (351.62 to 488.61)	381.92 (322.2 to 452.33)	-0.42 (- 0.62 to - 0.21)
Chile	114299 (97315 to 134833)	156229 (134886 to 185309)	0.37 (0.23- 0.52)	1006.5 (856.7 to 1184.76)	705.14 (607.43 to 835.53)	-1.41 (- 1.56 to - 1.27)
China	45600356 (38313794 to 54461794)	66411912 (55442174 to 80416522)	0.46 (0.31- 0.6)	4573.3 (3884.2 to 5407.84)	3436.79 (2899.88 to 4138.41)	-1.02 (- 1.08 to - 0.95)
Colombia	1217913 (1035352 to 1418903)	2180478 (1848221 to 2591533)	0.79 (0.62- 0.97)	4895.84 (4198.05 to 5702.97)	4215.78 (3574.4 to 5007.58)	-0.54 (- 0.6 to - 0.48)
Comoros	1453 (1223 to 1728)	2358 (2020 to 2802)	0.62 (0.48- 0.77)	464.13 (400.19 to 552.48)	386.79 (336.42 to 458.3)	-0.72 (- 0.92 to - 0.52)
Congo	7101 (5872 to 8460)	14610 (12111 to 17359)	1.06 (0.9- 1.24)	426.53 (362.04 to 500.71)	352.52 (298.76 to 414.53)	-0.74 (- 0.95 to - 0.53)
Cook Islands	128 (109 to 151)	172 (147 to 207)	0.34 (0.22- 0.48)	846.33 (726.5 to 1001.57)	799.76 (680.85 to 960.72)	-0.16 (- 0.31 to - 0.02)
Costa Rica	101617 (85556 to 119805)	203291 (172751 to 239631)	1 (0.83- 1.21)	4371.54 (3748.04 to 5141.94)	3930.04 (3353.84 to 4630.54)	-0.37 (- 0.44 to - 0.31)

Cote d'Ivoire	30309 (24407 to 37501)	67353 (54667 to 84254)	1.22 (1.05- 1.44)	352.14 (295.15 to 419.08)	334 (281.05 to 402.53)	-0.31 (- 0.54 to - 0.09)
Croatia	247052 (213326 to 292844)	247399 (214403 to 288159)	0 (-0.09- 0.1)	4107.95 (3556.1 to 4814.55)	3811.96 (3295.06 to 4456.53)	-0.2 (- 0.27 to - 0.14)
Cuba	185325 (159586 to 218406)	212421 (181968 to 252631)	0.15 (0.05- 0.26)	1725.5 (1489.74 to 2030.42)	1403.19 (1190.54 to 1677.08)	-0.7 (- 0.81 to - 0.6)
Cyprus	10870 (9247 to 12836)	19358 (16201 to 23662)	0.78 (0.63- 0.95)	1340.32 (1144.74 to 1578.34)	1102.59 (921.84 to 1345.05)	-0.15 (- 0.25 to - 0.04)
Czechia	644305 (562896 to 752635)	659361 (566652 to 785558)	0.02 (- 0.05-0.11)	5146.27 (4495.91 to 6010.39)	4111.42 (3519.86 to 4902.33)	-0.68 (- 0.74 to - 0.62)
Democratic People's Republic of Korea	340166 (290332 to 409680)	503267 (429262 to 603653)	0.48 (0.36- 0.61)	1839.04 (1590.08 to 2195.5)	1572.02 (1350.4 to 1870.76)	-0.63 (- 0.73 to - 0.53)
Democratic Republic of the Congo	110272 (91759 to 130297)	238288 (199982 to 283287)	1.16 (0.97- 1.32)	435.59 (371.15 to 511.57)	396.24 (340.87 to 471.77)	-0.34 (- 0.54 to - 0.14)
Denmark	177647 (153207 to 209411)	153221 (128492 to 185309)	-0.14 (- 0.22--0.06)	2628.43 (2248.55 to 3104)	1793.22 (1493.78 to 2174.72)	-1.53 (- 1.61 to - 1.44)
Djibouti	1171 (951 to 1415)	3117 (2579 to 3745)	1.66 (1.41- 1.93)	390.25 (331.67 to 461.53)	319.4 (272.64 to 383.44)	-0.81 (- 1.02 to - 0.59)
Dominica	1146 (991 to 1362)	1157 (991 to 1368)	0.01 (- 0.08-0.09)	1759.5 (1509.04 to 2094.13)	1469.01 (1248.48 to 1732.96)	-0.56 (- 0.66 to - 0.45)
Dominican Republic	94290 (78138 to 113349)	155240 (131184 to 185439)	0.65 (0.44- 0.83)	1765.98 (1494.11 to 2084.66)	1478.73 (1255.25 to 1755.35)	-0.54 (- 0.64 to - 0.43)

Ecuador	115092 (99114 to 134849)	213813 (181209 to 254268)	0.86 (0.68- 1.04)	1569.61 (1370.85 to 1843.6)	1288.27 (1097.96 to 1531.6)	-0.67 (- 0.78 to - 0.56)
Egypt	703141 (598319 to 836619)	1174219 (1002550 to 1390683)	0.67 (0.51- 0.84)	1861.12 (1597.8 to 2201.37)	1445.07 (1250.47 to 1713.03)	-0.91 (- 1.02 to - 0.81)
El Salvador	217207 (186758 to 254598)	273103 (232211 to 325230)	0.26 (0.15- 0.39)	5811.39 (5074.23 to 6780.49)	4517.7 (3851.79 to 5383.61)	-0.96 (- 1.02 to - 0.9)
Equatorial Guinea	1449 (1212 to 1745)	3152 (2574 to 3800)	1.18 (0.96- 1.39)	513.36 (439.02 to 612.16)	331.45 (284.3 to 396.24)	-1.75 (- 1.95 to - 1.55)
Eritrea	8878 (7433 to 10614)	19506 (16366 to 23479)	1.2 (1.01- 1.38)	490.67 (422.61 to 573.54)	421.34 (365.9 to 504.28)	-0.57 (- 0.77 to - 0.38)
Estonia	81783 (70893 to 96260)	63028 (53433 to 75224)	-0.23 (-0.3- -0.14)	4339.21 (3762.41 to 5105.65)	3301.74 (2778.01 to 3954.23)	-1.15 (- 1.21 to - 1.08)
Eswatini	3966 (3306 to 4711)	6379 (5392 to 7583)	0.61 (0.49- 0.74)	807.01 (693.49 to 954.68)	735 (632.54 to 859.13)	-0.24 (- 0.38 to - 0.09)
Ethiopia	142401 (116042 to 173635)	237598 (189229 to 299428)	0.67 (0.51- 0.81)	413.74 (345.39 to 493.62)	311.58 (257.98 to 378.28)	-1.11 (- 1.33 to - 0.89)
Fiji	5326 (4438 to 6403)	8290 (7101 to 9865)	0.56 (0.43- 0.73)	980.49 (842.99 to 1164.88)	957.03 (829.15 to 1130.63)	-0.02 (- 0.15 to 0.12)
Finland	110649 (93956 to 130522)	123838 (105279 to 148776)	0.12 (0.02- 0.24)	1715.59 (1452.46 to 2024.6)	1440.38 (1206.15 to 1758.62)	-0.81 (- 0.9 to - 0.72)
France	1267603 (1101805 to 1503514)	1171008 (999604 to 1395257)	-0.08 (- 0.15-0.01)	1720.99 (1489.38 to 2056.68)	1177.03 (998.06 to 1424.51)	-1.63 (- 1.74 to - 1.52)

Gabon	2746 (2291 to 3258)	4694 (3929 to 5583)	0.71 (0.59-0.87)	373.96 (319.18 to 442.67)	318.37 (273.04 to 381.15)	-0.6 (-0.82 to -0.38)
Gambia	2488 (2023 to 2997)	5614 (4537 to 6759)	1.26 (1.06-1.46)	357.69 (300.56 to 424.08)	329.14 (275.87 to 393.79)	-0.31 (-0.54 to -0.09)
Georgia	114014 (93756 to 138305)	105763 (89124 to 128332)	-0.07 (-0.14-0.02)	1906.61 (1572.98 to 2307.15)	2205.24 (1851.3 to 2648.25)	0.79 (0.7 to 0.89)
Germany	2883529 (2477120 to 3423394)	2799132 (2399985 to 3410821)	-0.03 (-0.12-0.06)	2637.72 (2245.93 to 3124.23)	2040.06 (1732.47 to 2502.84)	-0.75 (-0.83 to -0.67)
Ghana	37424 (30534 to 45711)	84251 (69204 to 101393)	1.25 (1.06-1.48)	337.25 (283.44 to 400.41)	320.67 (272.65 to 381.1)	-0.17 (-0.4 to 0.06)
Greece	182344 (153150 to 220099)	232519 (199477 to 278428)	0.28 (0.17-0.4)	1381.12 (1155.88 to 1668.26)	1386.14 (1178.81 to 1676.5)	0.03 (-0.08 to 0.15)
Greenland	1594 (1347 to 1904)	1920 (1655 to 2247)	0.2 (0.09-0.35)	3262.68 (2839.42 to 3832.99)	2865.08 (2477.36 to 3354.98)	-0.52 (-0.59 to -0.45)
Grenada	1386 (1201 to 1633)	1789 (1522 to 2147)	0.29 (0.17-0.43)	1996.09 (1728.18 to 2356.26)	1576.33 (1349.4 to 1884.98)	-0.77 (-0.87 to -0.67)
Guam	830 (682 to 1011)	1314 (1112 to 1612)	0.58 (0.44-0.76)	749.42 (625.59 to 905.85)	720.12 (607.59 to 876.65)	-0.11 (-0.27 to 0.04)
Guatemala	345635 (297318 to 402273)	735042 (620592 to 881905)	1.13 (0.95-1.37)	6664.26 (5802.36 to 7797.77)	5116.12 (4383.18 to 6093.06)	-1.06 (-1.12 to -1.01)
Guinea	18210 (15197 to 21897)	32725 (26756 to 39689)	0.8 (0.67-0.96)	391.05 (330.74 to 466.08)	351 (295.73 to 418.76)	-0.47 (-0.69 to -0.26)

Guinea-Bissau	3074 (2545 to 3723)	5314 (4352 to 6406)	0.73 (0.57-0.89)	437.15 (370.15 to 518.44)	374.55 (317.64 to 440.89)	-0.61 (-0.82 to -0.41)
Guyana	13130 (11209 to 15427)	14188 (12134 to 16843)	0.08 (-0.02-0.18)	2384.29 (2072.28 to 2802.94)	1928.86 (1661.5 to 2282.84)	-0.65 (-0.74 to -0.56)
Haiti	133427 (113548 to 158440)	239596 (203123 to 282872)	0.8 (0.65-0.94)	3015.92 (2610.82 to 3550.67)	2423.07 (2079.4 to 2863.99)	-0.69 (-0.77 to -0.61)
Honduras	207829 (179323 to 245787)	483941 (412988 to 571099)	1.33 (1.14-1.55)	7035.89 (6126.31 to 8281.84)	6070.86 (5273.7 to 7142.56)	-0.62 (-0.67 to -0.57)
Hungary	710140 (606914 to 834328)	644722 (554117 to 766471)	-0.09 (-0.17-0.02)	5390.08 (4589.86 to 6293.29)	4353.52 (3724.92 to 5164.81)	-0.85 (-0.91 to -0.79)
Iceland	2403 (2023 to 2878)	3624 (3024 to 4372)	0.51 (0.37-0.65)	904.15 (757.4 to 1090.38)	798.67 (665.88 to 965.66)	0.56 (0.43 to 0.7)
India	9780951 (7995147 to 11924929)	26404124 (21500313 to 32371034)	1.7 (1.52-1.86)	1518.67 (1267.63 to 1825.99)	2016.06 (1665.05 to 2444.45)	1.64 (1.54 to 1.74)
Indonesia	1835473 (1508072 to 2223597)	3102272 (2523824 to 3831136)	0.69 (0.57-0.8)	1315.26 (1105.89 to 1576.93)	1172.9 (969.04 to 1427.6)	-0.36 (-0.48 to -0.24)
Iran (Islamic Republic of)	613004 (497481 to 761761)	1315017 (1063181 to 1659441)	1.15 (0.99-1.28)	1687.02 (1389.63 to 2072.5)	1530.32 (1263.13 to 1874.78)	-0.24 (-0.33 to -0.14)
Iraq	136296 (114772 to 162605)	343738 (286268 to 415061)	1.52 (1.29-1.76)	1309.95 (1120.95 to 1544.19)	1061.14 (894.8 to 1269.34)	-0.8 (-0.92 to -0.68)
Ireland	56681 (47990 to 67442)	85997 (72419 to 103222)	0.52 (0.38-0.66)	1519.27 (1279.1 to 1806.78)	1336.08 (1118.26 to 1602.59)	-0.53 (-0.63 to -0.42)

Israel	73804 (61728 to 87236)	148478 (125259 to 178784)	1.01 (0.85- 1.19)	1587.4 (1323.53 to 1879.4)	1451.24 (1219.17 to 1752.51)	-0.37 (- 0.47 to - 0.26)
Italy	4995657 (4208368 to 5962149)	5027091 (4347448 to 5920817)	0.01 (- 0.05-0.06)	6717.29 (5615.33 to 8085.84)	5448.65 (4619.27 to 6558.62)	-1.02 (- 1.08 to - 0.96)
Jamaica	30833 (26161 to 36351)	42519 (36629 to 49920)	0.38 (0.27- 0.5)	1601.76 (1360.19 to 1887.17)	1419.39 (1224.87 to 1665.89)	-0.34 (- 0.45 to - 0.23)
Japan	5824127 (4815849 to 7075253)	7734823 (6770951 to 9127212)	0.33 (0.21- 0.45)	3793.41 (3158.61 to 4610.51)	3610.2 (3065.8 to 4328.34)	-0.26 (- 0.33 to - 0.2)
Jordan	28336 (24172 to 33646)	97214 (80618 to 117575)	2.43 (2.11- 2.82)	1407.78 (1216.1 to 1647.94)	1057.88 (891.43 to 1285.86)	-1.09 (- 1.2 to - 0.97)
Kazakhstan	383092 (327836 to 452907)	391896 (336976 to 471458)	0.02 (- 0.07-0.14)	2675.71 (2315.42 to 3155.01)	2064.12 (1788.77 to 2465.21)	-0.99 (- 1.08 to - 0.91)
Kenya	54820 (44185 to 67941)	126229 (100717 to 156566)	1.3 (1.21- 1.41)	368.99 (309.54 to 447.15)	336.95 (281.87 to 407.32)	-0.39 (- 0.61 to - 0.16)
Kiribati	800 (680 to 952)	1340 (1131 to 1593)	0.68 (0.56- 0.8)	1576.93 (1366.43 to 1870.84)	1458.28 (1263.07 to 1724.55)	-0.28 (- 0.38 to - 0.17)
Kuwait	11376 (9420 to 13984)	41040 (33188 to 51003)	2.61 (2.19- 3.03)	914.6 (784.16 to 1109.58)	876.09 (736.06 to 1054.5)	-0.14 (- 0.28 to 0)
Kyrgyzstan	89173 (77220 to 103637)	115286 (96675 to 137521)	0.29 (0.18- 0.42)	2597.78 (2246.8 to 3019.85)	2005.97 (1714.45 to 2375.46)	-0.96 (- 1.05 to - 0.87)
Lao People's Democratic Republic	53271 (45640 to 61851)	92122 (78685 to 108544)	0.73 (0.6- 0.89)	1958.48 (1710.23 to 2280.17)	1559.45 (1353.89 to 1829.44)	-0.91 (- 1.01 to - 0.82)

Latvia	174954 (150690 to 204135)	127190 (109946 to 148744)	-0.27 (- 0.34--0.21)	5336.81 (4589.46 to 6230)	4343.19 (3713.7 to 5095.66)	-0.57 (- 0.63 to - 0.52)
Lebanon	30420 (25612 to 36391)	53798 (45238 to 65004)	0.77 (0.6- 0.93)	1173.09 (995.74 to 1403.41)	1015.48 (855.34 to 1226.91)	-0.5 (- 0.62 to - 0.37)
Lesotho	10980 (9236 to 12927)	14746 (12408 to 17629)	0.34 (0.23- 0.45)	858.24 (732.99 to 1008.27)	851.75 (729.59 to 1004.04)	0.07 (- 0.07 to 0.21)
Liberia	5468 (4573 to 6597)	11975 (9695 to 14585)	1.19 (1.01- 1.39)	357.45 (301.98 to 424.44)	312.39 (260.27 to 372.49)	-0.62 (- 0.84 to - 0.39)
Libya	29089 (24614 to 34628)	70192 (57823 to 86374)	1.41 (1.2- 1.63)	1140.06 (978.7 to 1351.33)	1038.07 (877.19 to 1248.29)	-0.41 (- 0.54 to - 0.29)
Lithuania	229338 (197096 to 269964)	208086 (180112 to 243511)	-0.09 (- 0.18-0.01)	5390.72 (4640.38 to 6331.12)	4809.12 (4135.8 to 5644.82)	-0.28 (- 0.33 to - 0.22)
Luxembourg	8576 (7337 to 10288)	12783 (10667 to 15487)	0.49 (0.37- 0.63)	1733.53 (1481.59 to 2083.26)	1471.7 (1225.23 to 1790.43)	-0.6 (-0.7 to -0.51)
Madagascar	30968 (25745 to 37571)	70085 (57496 to 84804)	1.26 (1.09- 1.46)	383.41 (326.4 to 458.62)	370.34 (314.91 to 446.49)	-0.15 (- 0.37 to 0.07)
Malawi	25683 (21117 to 31350)	47762 (39438 to 56864)	0.86 (0.7- 1.02)	416.45 (352.59 to 501.72)	390.73 (336.17 to 462.67)	-0.32 (- 0.52 to - 0.11)
Malaysia	182660 (155441 to 216984)	367756 (309095 to 449609)	1.01 (0.81- 1.19)	1431.28 (1234.48 to 1698.77)	1192.39 (1011.05 to 1446.02)	-0.71 (- 0.83 to - 0.6)
Maldives	1587 (1337 to 1886)	4284 (3432 to 5301)	1.7 (1.41- 1.99)	1146.4 (979.65 to 1365.72)	868.51 (709.25 to 1064.55)	-1.02 (- 1.15 to - 0.88)

Mali	24849 (20575 to 29765)	55830 (45680 to 67600)	1.25 (1.08- 1.43)	391.06 (329.87 to 466.02)	361.42 (305.15 to 431.41)	-0.32 (- 0.53 to - 0.1)
Malta	3164 (2660 to 3786)	4613 (3882 to 5561)	0.46 (0.33- 0.59)	753.13 (632.61 to 900.15)	673.5 (565.32 to 814.26)	0.36 (0.21 to 0.51)
Marshall Islands	326 (277 to 387)	547 (464 to 639)	0.68 (0.54- 0.82)	1301.06 (1121.96 to 1549.33)	1163.55 (1003.24 to 1350.66)	-0.4 (- 0.52 to - 0.29)
Mauritania	5438 (4509 to 6572)	9455 (7764 to 11487)	0.74 (0.59- 0.91)	353.08 (298.76 to 414.63)	291.46 (245.02 to 345.14)	-0.79 (- 1.02 to - 0.55)
Mauritius	10167 (8478 to 12121)	16241 (13551 to 19699)	0.6 (0.44- 0.77)	1060.08 (892.83 to 1268.11)	1005.17 (834.88 to 1210.42)	-0.17 (- 0.3 to - 0.04)
Mexico	3493981 (2913113 to 4188375)	6564811 (5504713 to 7902620)	0.88 (0.76- 0.99)	5644.13 (4800.07 to 6707.05)	5152.17 (4335.65 to 6173.35)	0.25 (0.19 to 0.3)
Micronesia (Federated States of)	870 (736 to 1029)	1006 (863 to 1184)	0.16 (0.05- 0.26)	1368.29 (1177.65 to 1630.35)	1150.34 (998.14 to 1352.93)	-0.66 (- 0.77 to - 0.54)
Monaco	700 (597 to 830)	864 (733 to 1047)	0.23 (0.14- 0.33)	1409.6 (1190.82 to 1718.97)	1350.66 (1132.94 to 1653.3)	-0.15 (- 0.26 to - 0.04)
Mongolia	50275 (43190 to 59890)	78347 (66413 to 93256)	0.56 (0.43- 0.71)	3706.49 (3197.52 to 4365.42)	2518.42 (2179.03 to 2953.31)	-1.61 (- 1.68 to - 1.53)
Montenegro	25004 (20925 to 29852)	29634 (24975 to 35595)	0.19 (0.09- 0.29)	3878.13 (3256.44 to 4618.58)	3620.78 (3056.75 to 4323.26)	-0.26 (- 0.33 to - 0.19)
Morocco	244415 (208398 to 288277)	429266 (363724 to 528257)	0.76 (0.6- 0.92)	1405.22 (1206.45 to 1655.7)	1201.76 (1030.52 to 1461)	-0.55 (- 0.67 to - 0.44)

Mozambique	42323 (35516 to 49896)	81177 (67800 to 97760)	0.92 (0.78- 1.04)	479.19 (412.07 to 563.33)	437.64 (376.73 to 519.74)	-0.39 (- 0.58 to - 0.19)
Myanmar	495227 (417932 to 588759)	696505 (585887 to 835263)	0.41 (0.27- 0.54)	1645.4 (1402.32 to 1956.07)	1294.24 (1098.5 to 1551.03)	-0.98 (- 1.09 to - 0.88)
Namibia	8285 (6986 to 9667)	13393 (11332 to 16011)	0.62 (0.48- 0.74)	856.52 (731.89 to 1001.49)	700.46 (605.22 to 835.27)	-0.75 (- 0.9 to - 0.61)
Nauru	68 (56 to 81)	77 (65 to 91)	0.14 (0.05- 0.22)	1050.42 (904.91 to 1229.39)	1050.93 (911.85 to 1237.6)	0.06 (- 0.07 to 0.18)
Nepal	93603 (78912 to 111697)	148860 (124632 to 177582)	0.59 (0.44- 0.75)	696.94 (595.19 to 824.14)	554.32 (469.94 to 658.09)	-0.09 (- 0.24 to 0.07)
Netherlands	272416 (231588 to 326439)	344939 (292601 to 424650)	0.27 (0.15- 0.39)	1495.35 (1272.7 to 1799.12)	1337.11 (1120.55 to 1646.05)	-0.48 (- 0.59 to - 0.37)
New Zealand	88578 (72633 to 109652)	179649 (152703 to 214071)	1.03 (0.84- 1.24)	2424.08 (1977.58 to 3011.6)	3206.9 (2683.19 to 3888.49)	0.9 (0.82 to 0.97)
Nicaragua	121652 (101706 to 143208)	239772 (203590 to 283604)	0.97 (0.78- 1.16)	5134.02 (4379.28 to 6022.17)	4140.89 (3548.42 to 4862.17)	-0.85 (- 0.91 to - 0.79)
Niger	22675 (18630 to 27192)	57459 (47159 to 68901)	1.53 (1.34- 1.73)	420.54 (353.9 to 492.06)	382.58 (323.42 to 448.69)	-0.45 (- 0.66 to - 0.24)
Nigeria	214785 (168965 to 273434)	483401 (377327 to 623467)	1.25 (1.18- 1.32)	297.62 (241.73 to 367.03)	288.85 (235.57 to 356.61)	-0.2 (- 0.45 to 0.04)
Niue	19 (16 to 23)	17 (14 to 20)	-0.13 (-0.2- -0.05)	906.88 (779.37 to 1077.9)	846.06 (733.93 to 1002.5)	-0.22 (- 0.36 to - 0.08)

North Macedonia	88551 (75919 to 105562)	106530 (89267 to 127407)	0.2 (0.09-0.31)	4387.22 (3771.95 to 5206.1)	3730.22 (3137.99 to 4415.43)	-0.67 (-0.74 to -0.61)
Northern Mariana Islands	328 (272 to 395)	519 (441 to 626)	0.58 (0.37-0.8)	960.27 (832.93 to 1129.04)	958.69 (830.64 to 1149.5)	0.04 (-0.09 to 0.18)
Norway	245295 (208035 to 293707)	308550 (257063 to 377692)	0.26 (0.2-0.32)	4520.72 (3748.04 to 5492.17)	4099.18 (3370.84 to 5072.93)	-0.25 (-0.32 to -0.19)
Oman	11648 (9609 to 14195)	29842 (23998 to 36627)	1.56 (1.32-1.82)	1035.64 (876.96 to 1241.84)	829.38 (689.67 to 994.1)	-0.82 (-0.96 to -0.69)
Pakistan	730938 (599265 to 889722)	1314206 (1058888 to 1638207)	0.8 (0.69-0.91)	948.24 (789.48 to 1142.09)	795.72 (649.17 to 966.61)	-0.68 (-0.82 to -0.54)
Palau	116 (98 to 138)	192 (163 to 233)	0.67 (0.5-0.85)	927.25 (799.94 to 1108.74)	849.43 (731.62 to 1010.35)	-0.29 (-0.43 to -0.15)
Palestine	14845 (12574 to 17691)	38379 (32018 to 45793)	1.59 (1.36-1.83)	1327.8 (1140.38 to 1587.49)	1130.68 (955.5 to 1341.14)	-0.57 (-0.69 to -0.45)
Panama	84967 (71840 to 100606)	158515 (134537 to 187967)	0.87 (0.7-1.06)	4434.39 (3806.04 to 5224.18)	3763.94 (3200.51 to 4468.76)	-0.58 (-0.64 to -0.51)
Papua New Guinea	29234 (24351 to 34465)	73599 (61430 to 87223)	1.52 (1.32-1.74)	1078.03 (922.34 to 1270.91)	1021.38 (868.34 to 1204.06)	-0.15 (-0.28 to -0.02)
Paraguay	108417 (92047 to 128011)	214190 (182930 to 255123)	0.98 (0.84-1.12)	3768.15 (3242.23 to 4434.03)	3330.07 (2858.65 to 3945.4)	-0.42 (-0.49 to -0.35)
Peru	350647 (300728 to 412846)	389445 (330589 to 462889)	0.11 (0-0.23)	2217.17 (1920.63 to 2598.43)	1145.13 (976.03 to 1359.97)	-2.88 (-2.98 to -2.78)

Philippines	680633 (551743 to 847386)	1580271 (1289170 to 1937654)	1.32 (1.21- 1.43)	1519.33 (1258.67 to 1839.78)	1590.25 (1316.89 to 1926.31)	0.37 (0.26 to 0.47)
Poland	1489806 (1242123 to 1785653)	1328483 (1168417 to 1531871)	-0.11 (- 0.19--0.02)	3556.41 (2964.39 to 4248.38)	2362.24 (2058.87 to 2738.16)	-1.58 (- 1.65 to - 1.51)
Portugal	78813 (66995 to 94976)	123074 (106506 to 146393)	0.56 (0.42- 0.7)	647.32 (548.84 to 779.94)	731.93 (624.75 to 873.27)	0.75 (0.58 to 0.91)
Puerto Rico	60100 (51249 to 71571)	64145 (54728 to 75958)	0.07 (- 0.03-0.17)	1667.8 (1423.57 to 1984.09)	1353.29 (1143.03 to 1610.36)	-0.73 (- 0.84 to - 0.63)
Qatar	2815 (2262 to 3496)	17644 (14269 to 22079)	5.27 (4.66- 5.9)	931.09 (799.98 to 1100.74)	690.12 (584.83 to 826.8)	-1.23 (- 1.38 to - 1.08)
Republic of Korea	1794765 (1521058 to 2109920)	2577994 (2170816 to 3120630)	0.44 (0.29- 0.61)	4823.33 (4119.7 to 5573.91)	3340.27 (2810.47 to 3979.41)	-1.47 (- 1.53 to - 1.4)
Republic of Moldova	214495 (184092 to 251062)	187016 (159729 to 223390)	-0.13 (- 0.21--0.04)	4725.97 (4080.69 to 5509.7)	3705.39 (3164.45 to 4396.9)	-1 (-1.06 to -0.94)
Romania	1571005 (1347557 to 1822940)	1287212 (1105933 to 1520044)	-0.18 (- 0.27--0.09)	5885.6 (5054.51 to 6844.77)	4554.49 (3923.54 to 5384.58)	-0.64 (- 0.7 to - 0.58)
Russian Federation	4384734 (3712466 to 5213779)	3957012 (3325157 to 4773848)	-0.1 (-0.15- -0.04)	2570.39 (2177.97 to 3053.04)	2031.98 (1692.63 to 2459.52)	-0.93 (- 1.02 to - 0.85)
Rwanda	23699 (19850 to 27977)	37311 (31290 to 44746)	0.57 (0.43- 0.72)	526.27 (453.24 to 612.71)	406.84 (351.03 to 481.07)	-1.13 (- 1.32 to - 0.94)
Saint Kitts and Nevis	757 (657 to 893)	1080 (929 to 1292)	0.43 (0.28- 0.57)	2176.57 (1887.4 to 2587.52)	1556.05 (1346.61 to 1856.6)	-1.2 (- 1.29 to - 1.1)

Saint Lucia	1884 (1592 to 2220)	2982 (2489 to 3591)	0.58 (0.43-0.75)	1817.39 (1541.53 to 2121.4)	1441.8 (1209.77 to 1725.81)	-0.75 (-0.85 to -0.64)
Saint Vincent and the Grenadines	1564 (1316 to 1856)	1995 (1722 to 2369)	0.28 (0.16-0.4)	1893.76 (1608.32 to 2232.43)	1560.69 (1341.95 to 1849.53)	-0.64 (-0.74 to -0.54)
Samoa	1196 (1024 to 1443)	1745 (1502 to 2048)	0.46 (0.36-0.57)	1093.88 (946.2 to 1299.08)	1015.87 (878.77 to 1196.15)	-0.23 (-0.36 to -0.1)
San Marino	364 (306 to 439)	577 (482 to 693)	0.59 (0.45-0.73)	1273.08 (1061.98 to 1553.02)	1224.38 (1008.98 to 1481.49)	-0.17 (-0.29 to -0.06)
Sao Tome and Principe	309 (257 to 372)	483 (393 to 584)	0.56 (0.44-0.71)	341.79 (290.3 to 405.47)	277.51 (233.02 to 326.76)	-0.88 (-1.11 to -0.64)
Saudi Arabia	124163 (105395 to 148301)	329325 (271990 to 402757)	1.65 (1.39-1.99)	1347.87 (1167.98 to 1606.71)	1001.12 (858.88 to 1207.6)	-1.05 (-1.17 to -0.93)
Senegal	19806 (16361 to 23992)	39266 (32187 to 45741)	0.98 (0.81-1.17)	363.19 (307.42 to 432.06)	328.93 (277.1 to 387.58)	-0.41 (-0.64 to -0.19)
Serbia	470176 (399011 to 557562)	463066 (399452 to 547711)	-0.02 (-0.1-0.08)	4254.16 (3618.74 to 5008.5)	3727.79 (3195.02 to 4411.1)	-0.33 (-0.4 to -0.27)
Seychelles	716 (609 to 856)	1208 (1004 to 1469)	0.69 (0.53-0.85)	1174.25 (1001.36 to 1410.1)	1020.06 (853.96 to 1221.87)	-0.57 (-0.69 to -0.44)
Sierra Leone	10148 (8301 to 12129)	22501 (18411 to 27607)	1.22 (1.03-1.42)	358.35 (299 to 420.59)	354.09 (298.81 to 419.45)	-0.04 (-0.26 to 0.18)
Singapore	110898 (94807 to 131215)	244753 (205860 to 294998)	1.21 (1-1.41)	3963.69 (3429.07 to 4631.42)	3243.3 (2755.74 to 3884.4)	-0.76 (-0.83 to -0.7)

Slovakia	392545 (334189 to 458637)	400016 (345099 to 466272)	0.02 (- 0.09-0.11)	6861.65 (5851.48 to 8018.29)	5211.6 (4486.38 to 6038.18)	-1.04 (- 1.09 to - 0.99)
Slovenia	101215 (87389 to 118184)	113812 (98540 to 134109)	0.12 (0.03- 0.22)	4355.16 (3766.8 to 5084.79)	3545.29 (3047.87 to 4204.39)	-0.48 (- 0.54 to - 0.41)
Solomon Islands	2601 (2184 to 3047)	5505 (4659 to 6523)	1.12 (0.95- 1.27)	1265.6 (1091.33 to 1479.16)	1173.55 (1019.13 to 1383.08)	-0.23 (- 0.35 to - 0.11)
Somalia	20234 (16827 to 24484)	53520 (44050 to 63535)	1.65 (1.46- 1.83)	448.22 (385.78 to 526.28)	430.58 (366.18 to 504.41)	-0.19 (- 0.39 to 0.01)
South Africa	178908 (143943 to 219089)	279499 (229725 to 346882)	0.56 (0.47- 0.66)	605.13 (498.19 to 735.85)	521.42 (434.07 to 636.32)	-0.46 (- 0.63 to - 0.29)
South Sudan	14911 (12316 to 17955)	23779 (19699 to 28910)	0.59 (0.48- 0.72)	383.33 (326.74 to 451.09)	372.77 (316.05 to 447.26)	-0.16 (- 0.37 to 0.06)
Spain	589452 (504448 to 713919)	674023 (567942 to 813176)	0.14 (0.04- 0.26)	1255.18 (1063.89 to 1515.13)	947.19 (790.63 to 1151.6)	-1.16 (- 1.29 to - 1.03)
Sri Lanka	161619 (133221 to 193570)	240971 (200953 to 298874)	0.49 (0.34- 0.65)	1105.78 (917.78 to 1331.23)	975.73 (814.93 to 1193.91)	-0.5 (- 0.63 to - 0.37)
Sudan	174277 (147261 to 207454)	335587 (281689 to 404879)	0.93 (0.76- 1.12)	1433.49 (1225.05 to 1704.21)	1229.32 (1053.32 to 1471.71)	-0.56 (- 0.68 to - 0.45)
Suriname	6901 (5979 to 8123)	10916 (9338 to 13095)	0.58 (0.43- 0.75)	2186.18 (1904.37 to 2550.33)	1778.16 (1527.2 to 2112.35)	-0.68 (- 0.78 to - 0.59)
Sweden	198485 (165727 to 244206)	266141 (221446 to 326451)	0.34 (0.25- 0.45)	1683.69 (1377.11 to 2115.41)	1767.37 (1447.56 to 2204.17)	0.19 (0.09 to 0.28)

Switzerland	123579 (105006 to 150151)	173038 (145114 to 209700)	0.4 (0.3- 0.52)	1373.95 (1159.88 to 1680.77)	1292.71 (1083.93 to 1567.02)	-0.31 (- 0.41 to - 0.21)
Syrian Arab Republic	91588 (76772 to 108280)	149467 (124558 to 181434)	0.63 (0.49- 0.8)	1261.75 (1074.51 to 1493.54)	1051.22 (888.17 to 1263.44)	-0.75 (- 0.87 to - 0.62)
Taiwan (Province of China)	213643 (190657 to 239851)	277748 (236886 to 330607)	0.3 (0.15- 0.46)	1188.79 (1065.74 to 1332.59)	801.34 (682.82 to 949.7)	-1.04 (- 1.18 to - 0.9)
Tajikistan	85862 (72927 to 99778)	164571 (137012 to 195030)	0.92 (0.76- 1.07)	2432.86 (2102.41 to 2844.55)	2203.41 (1880.35 to 2577.07)	-0.36 (- 0.44 to - 0.27)
Thailand	822460 (718034 to 931005)	985402 (845084 to 1179086)	0.2 (0.07- 0.35)	1735.28 (1533.64 to 1963.67)	1047.65 (901.61 to 1239.54)	-2.03 (- 2.14 to - 1.91)
Timor-Leste	8565 (7268 to 10161)	14549 (12447 to 17294)	0.7 (0.55- 0.87)	1762.22 (1539 to 2082.69)	1489.12 (1275.56 to 1776.6)	-0.71 (- 0.81 to - 0.61)
Togo	9002 (7349 to 10889)	21482 (17764 to 25835)	1.39 (1.19- 1.59)	357.58 (303.15 to 422.63)	344.91 (295 to 410.44)	-0.22 (- 0.44 to 0)
Tokelau	15 (13 to 17)	13 (11 to 15)	-0.15 (- 0.21--0.08)	1108.8 (960.32 to 1311.08)	935.98 (808.37 to 1113.45)	-0.62 (- 0.75 to - 0.49)
Tonga	791 (673 to 945)	918 (790 to 1105)	0.16 (0.08- 0.25)	1186.79 (1016.52 to 1415.7)	1067.38 (922.43 to 1277.82)	-0.38 (- 0.51 to - 0.26)
Trinidad and Tobago	19054 (16203 to 22925)	25662 (21945 to 30840)	0.35 (0.21- 0.5)	1883.45 (1617.67 to 2251.04)	1527.23 (1310.2 to 1823.38)	-0.73 (- 0.83 to - 0.63)
Tunisia	44908 (37211 to 53653)	85277 (71781 to 102215)	0.9 (0.7- 1.08)	720.03 (602.58 to 854.26)	654.46 (554.72 to 780.51)	-1.17 (- 1.32 to - 1.01)

Turkey	660180 (563249 to 776170)	1083390 (922203 to 1307415)	0.64 (0.49- 0.81)	1504.47 (1297.95 to 1767.38)	1176.64 (1005.27 to 1414.65)	-0.03 (- 0.14 to 0.08)
Turkmenistan	60990 (51581 to 73394)	96055 (81713 to 113820)	0.57 (0.42- 0.74)	2427.84 (2073.46 to 2890.69)	2007.98 (1728.94 to 2363.73)	-0.71 (- 0.8 to - 0.62)
Tuvalu	93 (80 to 112)	111 (95 to 133)	0.19 (0.1- 0.29)	1199.43 (1033.6 to 1421.9)	1006.77 (861.11 to 1201.32)	-0.61 (- 0.74 to - 0.49)
Uganda	42613 (35393 to 50925)	91788 (76095 to 109350)	1.15 (0.98- 1.32)	399.63 (341.32 to 471.15)	357.28 (306.36 to 422.22)	-0.51 (- 0.72 to - 0.3)
Ukraine	2372907 (1959353 to 2860422)	1849666 (1520871 to 2287318)	-0.22 (-0.3- -0.11)	3710.72 (3071.06 to 4464.26)	3016.69 (2469.31 to 3761.07)	-0.86 (- 0.93 to - 0.78)
United Arab Emirates	11869 (9650 to 14495)	80774 (64296 to 100986)	5.81 (4.96- 6.69)	1035.06 (885.73 to 1228.06)	834.74 (721.06 to 991.8)	-0.73 (- 0.87 to - 0.6)
United Kingdom	2564453 (2155836 to 3078127)	5756875 (4983092 to 6747000)	1.24 (1.12- 1.37)	3529.11 (2931.53 to 4272.4)	6508.08 (5545.02 to 7764.5)	-0.22 (- 0.27 to - 0.16)
United Republic of Tanzania	64640 (54037 to 77779)	138066 (115407 to 165799)	1.14 (0.97- 1.31)	380.5 (325.78 to 456.8)	351.21 (300.46 to 423.93)	-0.32 (- 0.53 to - 0.1)
United States of America	8677031 (7128796 to 10714116)	10008242 (8972904 to 11314666)	0.15 (0.01- 0.3)	3014.71 (2443.77 to 3746.75)	2349.21 (2086.94 to 2670.18)	0.47 (0.39 to 0.56)
United States Virgin Islands	1935 (1642 to 2299)	2228 (1921 to 2676)	0.15 (0.04- 0.28)	1913.53 (1638.84 to 2250.22)	1617.01 (1382.8 to 1921.34)	-0.52 (- 0.62 to - 0.42)
Uruguay	28777 (24806 to 33873)	32804 (28583 to 39311)	0.14 (0.05- 0.23)	828.43 (710.06 to 969.27)	753.33 (650.61 to 899.29)	-0.35 (- 0.49 to - 0.2)

Uzbekistan	328194 (279803 to 388312)	614170 (512141 to 733713)	0.87 (0.7- 1.06)	2299.86 (1976.06 to 2732.93)	2092.88 (1775.11 to 2484.51)	-0.36 (- 0.44 to - 0.27)
Vanuatu	1378 (1161 to 1631)	3026 (2579 to 3576)	1.2 (1.04- 1.38)	1456.8 (1245.45 to 1731.43)	1377.76 (1185.84 to 1638.94)	-0.18 (- 0.29 to - 0.07)
Venezuela (Bolivarian Republic of)	680644 (572907 to 799934)	1216707 (1023335 to 1446760)	0.79 (0.65- 0.95)	4874 (4168.26 to 5728.15)	4022.01 (3403.6 to 4769.45)	-0.76 (- 0.82 to - 0.7)
Viet Nam	731394 (624732 to 874509)	1292092 (1079832 to 1553870)	0.77 (0.59- 0.94)	1515.59 (1308.98 to 1802.22)	1217.77 (1028.61 to 1449.54)	-0.84 (- 0.95 to - 0.73)
Yemen	109256 (91881 to 130316)	273653 (230603 to 325088)	1.5 (1.26- 1.76)	1582.53 (1353.33 to 1894.85)	1401.73 (1206.21 to 1650.03)	-0.44 (- 0.55 to - 0.34)
Zambia	21570 (18048 to 26233)	42655 (35201 to 51021)	0.98 (0.84- 1.13)	438.59 (377.66 to 521.7)	347.57 (297.77 to 414.86)	-0.95 (- 1.16 to - 0.74)
Zimbabwe	45117 (37340 to 53858)	80128 (67110 to 97558)	0.78 (0.62- 0.94)	686.83 (582.67 to 822.99)	744.98 (635.55 to 898.52)	0.44 (0.28 to 0.59)

Table S3. The years lived with disability (YLDs) of gallbladder and biliary diseases between 1990 and 2019 at national level, both sexes

regions	Cases in 1990	Cases in 2019	Change in absolute number (95% UI)	ASRs in 1990	ASRs in 2019	EAPC No. (95% CI)
Afghanistan	3192 (2019 to 4779)	7628 (4745 to 11493)	1.39 (1.1-1.74)	40.64 (26.24 to 60.77)	36.62 (23.46 to 54.42)	-0.38 (-1.03 to 0.27)
Albania	2371 (1483 to 3505)	2773 (1745 to 4154)	0.17 (0.03-0.31)	89.41 (56.81 to 131.58)	79.28 (49.72 to 118.59)	-0.46 (-0.91 to 0)
Algeria	4379 (2750 to 6508)	9021 (5783 to 13603)	1.06 (0.78-1.36)	27.34 (17.41 to 41)	22.38 (14.43 to 33.86)	-0.72 (-1.55 to 0.11)
American Samoa	7 (4 to 10)	11 (7 to 16)	0.53 (0.33-0.76)	20.66 (13.17 to 31.19)	20.21 (13.02 to 30.14)	0.09 (-0.83 to 1.01)
Andorra	17 (11 to 26)	34 (22 to 51)	0.97 (0.76-1.23)	28.55 (18.36 to 43.2)	26.9 (16.99 to 39.92)	-0.22 (-1 to 0.57)
Angola	646 (396 to 980)	1619 (1006 to 2460)	1.51 (1.08-1.99)	9.33 (5.81 to 14.05)	7.93 (5 to 12.1)	-0.64 (-2.03 to 0.77)
Antigua and Barbuda	21 (13 to 31)	33 (21 to 49)	0.59 (0.41-0.82)	37.77 (23.95 to 56.83)	31.77 (20.28 to 47.01)	-0.57 (-1.27 to 0.14)
Argentina	6328 (4013 to 9349)	8119 (5097 to 12065)	0.28 (0.13-0.46)	19.66 (12.48 to 29.05)	16.23 (10.11 to 24.44)	-2.02 (-2.93 to -1.1)
Armenia	1634 (1012 to 2409)	1773 (1117 to 2679)	0.09 (-0.04-0.21)	52.59 (32.92 to 77.27)	47.28 (29.94 to 71.41)	-0.36 (-0.95 to 0.23)
Australia	6923 (4396 to 10413)	11021 (6918 to 16707)	0.59 (0.42-0.78)	37.28 (23.71 to 55.86)	34.8 (21.91 to 52.43)	-0.3 (-0.99 to 0.39)
Austria	7468 (4771 to 11011)	7253 (4657 to 10790)	-0.03 (-0.12-0.09)	74.18 (47.1 to 108.89)	53.25 (33.82 to 79.83)	-1.22 (-1.7 to -0.74)
Azerbaijan	3133 (1990 to 4591)	4706 (2969 to 7105)	0.5 (0.33-0.69)	52.22 (33.3 to 76.61)	42.06 (26.97 to 62.98)	-0.85 (-1.44 to -0.24)
Bahamas	88 (55 to 135)	148 (95 to 219)	0.67 (0.47-0.9)	41.94 (26.79 to 63.45)	35.04 (22.58 to 51.94)	-0.59 (-1.26 to 0.09)
Bahrain	93 (59 to 140)	314 (196 to 477)	2.37 (1.84-2.96)	29.21 (18.92 to 42.78)	19.59 (12.46 to 29.27)	-1.6 (-2.42 to -0.77)
Bangladesh	14301 (8859 to 21639)	25877 (16325 to 38755)	0.81 (0.54-1.09)	19.98 (12.89 to 29.59)	17.13 (10.92 to 25.75)	-0.54 (-1.5 to 0.43)

Barbados	92 (58 to 137)	113 (72 to 169)	0.23 (0.08-0.4)	35.75 (22.51 to 52.97)	29.84 (18.68 to 45.31)	-0.55 (-1.27 to 0.19)
Belarus	11427 (7318 to 17109)	10173 (6579 to 15204)	-0.11 (-0.2-0.01)	93.99 (60.09 to 140.06)	76.71 (49.06 to 114.95)	-0.74 (-1.19 to 0.29)
Belgium	3988 (2545 to 5986)	4497 (2877 to 6743)	0.13 (-0.01-0.3)	30.55 (19.27 to 45.31)	26.77 (17.16 to 39.93)	0.22 (-0.48 to 0.93)
Belize	52 (32 to 77)	133 (83 to 197)	1.56 (1.23-1.92)	41.48 (26.76 to 61.35)	36.32 (22.89 to 53.82)	-0.36 (-1.03 to 0.31)
Benin	267 (163 to 411)	676 (403 to 1027)	1.53 (1.08-2.06)	7.81 (4.83 to 11.85)	7.3 (4.45 to 10.92)	-0.34 (-1.84 to 1.19)
Bermuda	22 (14 to 33)	23 (14 to 34)	0.08 (-0.07-0.22)	32.89 (20.82 to 49.23)	26.53 (16.39 to 39.92)	-0.72 (-1.49 to 0.05)
Bhutan	87 (53 to 129)	111 (69 to 163)	0.28 (0.06-0.52)	22.21 (13.9 to 32.89)	15.78 (9.9 to 23.26)	-1.33 (-2.28 to 0.36)
Bolivia (Plurinational State of)	1883 (1212 to 2784)	3159 (2024 to 4757)	0.68 (0.48-0.87)	42.2 (27.18 to 61.88)	29.95 (19.3 to 45.2)	-1.24 (-1.93 to 0.54)
Bosnia and Herzegovina	4971 (3187 to 7330)	4161 (2698 to 6107)	-0.16 (-0.25--0.08)	108.08 (70.09 to 159.25)	87.15 (56.61 to 127.41)	-0.82 (-1.24 to 0.4)
Botswana	152 (95 to 226)	286 (179 to 427)	0.89 (0.6-1.23)	17.28 (11.12 to 25.7)	13.91 (8.84 to 20.87)	0.29 (-0.6 to 1.19)
Brazil	82182 (51937 to 121733)	195526 (124014 to 292496)	1.38 (1.23-1.5)	70.25 (44.84 to 103.25)	80.68 (51.25 to 120.37)	0.28 (-0.18 to 0.74)
Brunei Darussalam	179 (112 to 270)	384 (245 to 570)	1.15 (0.95-1.38)	106.99 (69.38 to 156.89)	92.65 (59.81 to 136.85)	-0.55 (-0.96 to 0.13)
Bulgaria	10288 (6581 to 15149)	8692 (5536 to 13165)	-0.16 (-0.25--0.07)	93.59 (59.84 to 138.79)	83.17 (52.99 to 125.28)	-0.46 (-0.9 to 0.01)
Burkina Faso	557 (340 to 850)	1281 (774 to 1956)	1.3 (0.92-1.79)	8.06 (5.01 to 12.11)	7.71 (4.73 to 11.66)	-0.16 (-1.63 to 1.34)
Burundi	346 (214 to 517)	667 (404 to 1017)	0.93 (0.61-1.33)	9.44 (5.86 to 14.25)	8.36 (5.22 to 12.55)	-0.47 (-1.87 to 0.94)
Cabo Verde	18 (11 to 26)	28 (18 to 43)	0.61 (0.32-0.93)	6.39 (3.9 to 9.48)	5.23 (3.28 to 7.82)	-0.82 (-2.53 to 0.91)

Cambodia	2677 (1700 to 4026)	4592 (2863 to 6880)	0.72 (0.51-0.96)	41.93 (26.8 to 62.61)	31.2 (19.75 to 46.73)	-1.17 (-1.85 to 0.49)
Cameroon	606 (378 to 887)	1586 (978 to 2421)	1.62 (1.14-2.17)	7.96 (5.09 to 11.68)	7.04 (4.46 to 10.55)	-0.58 (-2.07 to 0.94)
Canada	14681 (9351 to 21696)	22287 (14257 to 33499)	0.52 (0.35-0.67)	47.37 (30.24 to 69.72)	44.39 (27.78 to 66.82)	-0.27 (-0.88 to 0.35)
Central African Republic	209 (132 to 317)	410 (260 to 615)	0.96 (0.64-1.31)	11.15 (7.15 to 16.65)	11.03 (7.06 to 16.29)	-0.06 (-1.3 to 1.18)
Chad	377 (226 to 567)	907 (549 to 1434)	1.41 (0.95-1.94)	8.81 (5.41 to 13.14)	8.13 (5.05 to 12.33)	-0.4 (-1.79 to 1.01)
Chile	2409 (1530 to 3628)	3270 (2097 to 4890)	0.36 (0.19-0.57)	21.09 (13.44 to 31.67)	14.82 (9.51 to 22)	-1.4 (-2.38 to 0.4)
China	969883 (613360 to 1426949)	1405395 (891080 to 2082322)	0.45 (0.3-0.59)	96.27 (61.41 to 139.85)	72.87 (46.34 to 107.47)	-0.99 (-1.45 to 0.54)
Colombia	26045 (16582 to 39302)	46262 (28935 to 69367)	0.78 (0.58-0.98)	103.62 (66.56 to 156.34)	89.54 (55.9 to 134.09)	-0.53 (-0.95 to 0.1)
Comoros	31 (20 to 48)	51 (32 to 77)	0.62 (0.35-0.92)	9.83 (6.19 to 14.84)	8.25 (5.22 to 12.41)	-0.7 (-2.06 to 0.69)
Congo	152 (94 to 229)	313 (193 to 478)	1.06 (0.72-1.49)	8.96 (5.64 to 13.3)	7.45 (4.69 to 11.33)	-0.71 (-2.14 to 0.73)
Cook Islands	3 (2 to 4)	4 (2 to 5)	0.31 (0.14-0.53)	17.81 (11.4 to 26.51)	16.77 (10.58 to 24.86)	-0.18 (-1.18 to 0.83)
Costa Rica	2176 (1342 to 3240)	4318 (2766 to 6465)	0.98 (0.8-1.21)	92.71 (58.72 to 137.23)	83.5 (53.86 to 124.99)	-0.37 (-0.81 to 0.08)
Cote d'Ivoire	657 (400 to 1003)	1470 (873 to 2265)	1.24 (0.83-1.76)	7.45 (4.67 to 11.28)	7.14 (4.33 to 10.64)	-0.29 (-1.81 to 1.25)
Croatia	5161 (3326 to 7805)	5105 (3252 to 7516)	-0.01 (-0.11-0.1)	86.08 (55.6 to 129.73)	79.9 (50.91 to 119.16)	-0.19 (-0.63 to 0.25)
Cuba	3923 (2471 to 5810)	4451 (2811 to 6548)	0.13 (0-0.3)	36.46 (22.78 to 54.11)	29.69 (18.48 to 43.95)	-0.69 (-1.42 to 0.04)
Cyprus	227 (144 to 349)	404 (256 to 596)	0.78 (0.58-0.99)	27.97 (17.92 to 42.67)	23.07 (14.56 to 34.12)	-0.13 (-0.88 to 0.62)

Czechia	13400 (8591 to 19759)	13572 (8710 to 19870)	0.01 (-0.08-0.12)	107.55 (68.71 to 159.26)	85.96 (54.46 to 126.99)	-0.68 (-1.1 to -0.26)
Democratic People's Republic of Korea	7254 (4609 to 10789)	10638 (6872 to 16071)	0.47 (0.31-0.64)	38.88 (24.89 to 58.16)	33.23 (21.56 to 50.06)	-0.62 (-1.3 to 0.06)
Democratic Republic of the Congo	2354 (1455 to 3512)	5110 (3179 to 7771)	1.17 (0.83-1.58)	9.1 (5.73 to 13.57)	8.32 (5.35 to 12.52)	-0.32 (-1.69 to 1.08)
Denmark	3683 (2375 to 5482)	3168 (2030 to 4852)	-0.14 (-0.24--0.04)	54.83 (34.67 to 82.04)	37.49 (23.78 to 56.35)	-1.51 (-2.11 to -0.91)
Djibouti	26 (15 to 39)	67 (41 to 103)	1.63 (1.16-2.23)	8.3 (5.16 to 12.6)	6.8 (4.26 to 10.3)	-0.79 (-2.28 to 0.72)
Dominica	24 (16 to 36)	24 (16 to 36)	0 (-0.11-0.13)	37.36 (23.62 to 55.61)	31.13 (19.89 to 46.42)	-0.56 (-1.27 to 0.16)
Dominican Republic	2027 (1240 to 3037)	3312 (2119 to 4981)	0.63 (0.4-0.86)	37.6 (23.61 to 56.01)	31.45 (20.17 to 47.06)	-0.54 (-1.25 to 0.18)
Ecuador	2463 (1556 to 3670)	4537 (2858 to 6762)	0.84 (0.61-1.1)	33.23 (21.26 to 49.79)	27.23 (17.17 to 40.55)	-0.68 (-1.44 to 0.09)
Egypt	14891 (9429 to 22918)	24859 (15686 to 37426)	0.67 (0.46-0.91)	39.01 (25.15 to 59.07)	30.32 (19.4 to 46.1)	-0.91 (-1.61 to -0.2)
El Salvador	4621 (2967 to 6900)	5779 (3686 to 8617)	0.25 (0.13-0.4)	122.7 (79.46 to 183.36)	95.5 (60.58 to 142.3)	-0.96 (-1.36 to -0.55)
Equatorial Guinea	31 (19 to 46)	68 (42 to 105)	1.23 (0.84-1.64)	10.68 (6.66 to 16.08)	7 (4.4 to 10.48)	-1.7 (-3.08 to -0.29)
Eritrea	190 (119 to 285)	420 (262 to 631)	1.21 (0.84-1.66)	10.27 (6.63 to 15.22)	8.87 (5.64 to 13.15)	-0.54 (-1.88 to 0.8)
Estonia	1704 (1106 to 2558)	1311 (842 to 1968)	-0.23 (-0.31--0.14)	90.78 (58.47 to 135.26)	69.63 (43.92 to 103.77)	-1.11 (-1.57 to -0.65)
Eswatini	85 (53 to 130)	135 (85 to 203)	0.58 (0.32-0.85)	17.03 (11 to 25.62)	15.26 (9.75 to 22.86)	-0.3 (-1.3 to 0.71)
Ethiopia	3073 (1895 to 4600)	5197 (3165 to 7926)	0.69 (0.49-0.89)	8.73 (5.53 to 12.95)	6.66 (4.2 to 9.89)	-1.06 (-2.55 to 0.44)
Fiji	114 (72 to 171)	174 (108 to 258)	0.53 (0.33-0.77)	20.54 (13.19 to 30.19)	19.96 (12.54 to 29.28)	-0.04 (-0.97 to 0.89)

Finland	2296 (1469 to 3418)	2551 (1646 to 3811)	0.11 (-0.01-0.26)	35.74 (22.85 to 53.25)	30.14 (19.09 to 45.7)	-0.8 (-1.43 to 0.17)
France	26301 (17100 to 39268)	24299 (15557 to 36478)	-0.08 (-0.17-0.04)	35.92 (23.1 to 53.2)	24.75 (15.41 to 37.16)	-1.6 (-2.36 to 0.84)
Gabon	59 (36 to 91)	100 (60 to 149)	0.71 (0.43-1.07)	7.89 (4.9 to 11.99)	6.72 (4.1 to 9.97)	-0.59 (-2.1 to 0.95)
Gambia	54 (32 to 81)	122 (74 to 184)	1.25 (0.83-1.79)	7.62 (4.63 to 11.41)	7.01 (4.41 to 10.57)	-0.31 (-1.82 to 1.23)
Georgia	2423 (1503 to 3617)	2217 (1408 to 3332)	-0.09 (-0.18-0.03)	40.56 (25.03 to 60.64)	46.65 (29.29 to 69.93)	0.77 (0.13 to 1.42)
Germany	59976 (38613 to 88654)	57559 (37150 to 85881)	-0.04 (-0.13-0.07)	55.17 (35.04 to 80.87)	42.56 (26.92 to 62.39)	-0.75 (-1.29 to 0.2)
Ghana	812 (495 to 1226)	1820 (1113 to 2771)	1.24 (0.85-1.7)	7.18 (4.51 to 10.81)	6.84 (4.19 to 10.22)	-0.16 (-1.73 to 1.43)
Greece	3814 (2434 to 5672)	4808 (3084 to 7164)	0.26 (0.13-0.42)	29.03 (18.38 to 42.81)	29.06 (18.42 to 43.12)	0.03 (-0.75 to 0.81)
Greenland	33 (21 to 51)	40 (26 to 60)	0.19 (0.06-0.35)	67.49 (43.17 to 101.33)	59.62 (38.8 to 88.5)	-0.49 (-1 to 0.02)
Grenada	29 (19 to 44)	38 (24 to 57)	0.28 (0.13-0.45)	42.28 (27.25 to 63.79)	33.28 (21.13 to 50.09)	-0.78 (-1.46 to 0.09)
Guam	18 (11 to 27)	28 (17 to 42)	0.56 (0.34-0.82)	15.92 (9.85 to 24.03)	15.28 (9.47 to 23.08)	-0.11 (-1.17 to 0.96)
Guatemala	7350 (4719 to 10743)	15620 (9818 to 23635)	1.13 (0.93-1.37)	140.16 (89.76 to 208.79)	107.74 (68.32 to 160.96)	-1.05 (-1.43 to 0.67)
Guinea	392 (238 to 597)	713 (433 to 1094)	0.82 (0.5-1.22)	8.31 (5.08 to 12.5)	7.51 (4.63 to 11.47)	-0.45 (-1.91 to 1.04)
Guinea-Bissau	67 (41 to 103)	116 (70 to 175)	0.74 (0.4-1.13)	9.29 (5.91 to 13.99)	7.98 (5 to 11.94)	-0.6 (-1.99 to 0.8)
Guyana	278 (173 to 411)	299 (189 to 446)	0.08 (-0.05-0.22)	49.8 (31.45 to 73.06)	40.42 (25.64 to 61.1)	-0.64 (-1.26 to 0.02)
Haiti	2825 (1779 to 4207)	5071 (3211 to 7554)	0.79 (0.61-1.01)	63.14 (40.23 to 94.17)	50.7 (32.5 to 74.89)	-0.7 (-1.24 to 0.15)
Honduras	4451 (2768 to 6583)	10318 (6586 to 15329)	1.32 (1.11-1.55)	149.07 (94.39 to 221.83)	128.37 (82.34 to 192.13)	-0.62 (-0.97 to 0.27)

Hungary	14753 (9544 to 22264)	13350 (8568 to 19949)	-0.1 (-0.19-0.02)	112.63 (72.34 to 170)	91.44 (57.95 to 134.88)	-0.82 (-1.24 to 0.41)
Iceland	50 (32 to 76)	76 (48 to 112)	0.5 (0.31-0.72)	18.97 (12.12 to 28.52)	16.78 (10.64 to 24.95)	0.58 (-0.33 to 1.5)
India	204553 (129982 to 301369)	548734 (347185 to 807659)	1.68 (1.51-1.85)	31.18 (20.07 to 45.45)	41.58 (26.34 to 61.52)	1.66 (0.94 to 2.38)
Indonesia	39197 (24906 to 58284)	66106 (41117 to 99018)	0.69 (0.55-0.82)	27.63 (17.68 to 40.8)	24.81 (15.61 to 36.74)	-0.33 (-1.14 to 0.49)
Iran (Islamic Republic of)	13011 (8143 to 19154)	27597 (17018 to 41614)	1.12 (0.96-1.28)	35.19 (22.1 to 51.56)	31.92 (20.27 to 47.71)	-0.23 (-0.89 to 0.43)
Iraq	2874 (1798 to 4315)	7263 (4511 to 10955)	1.53 (1.19-1.88)	27.21 (17.24 to 40.71)	22.16 (13.95 to 33.35)	-0.78 (-1.61 to 0.05)
Ireland	1184 (745 to 1765)	1790 (1128 to 2680)	0.51 (0.34-0.71)	31.81 (19.85 to 47.27)	27.97 (17.42 to 41.57)	-0.52 (-1.27 to 0.24)
Israel	1549 (972 to 2301)	3104 (1989 to 4614)	1 (0.8-1.27)	33.34 (20.93 to 49.64)	30.48 (19.45 to 45.43)	-0.37 (-1.09 to 0.36)
Italy	103692 (65579 to 152399)	104354 (66718 to 152857)	0.01 (-0.04-0.06)	140.31 (88.23 to 208.01)	115.01 (72.88 to 168.92)	-0.97 (-1.37 to 0.56)
Jamaica	660 (419 to 982)	902 (570 to 1340)	0.37 (0.21-0.55)	34.1 (21.5 to 50.82)	30.12 (19.02 to 44.49)	-0.35 (-1.09 to 0.4)
Japan	123226 (77312 to 183725)	160825 (103953 to 240746)	0.31 (0.19-0.42)	80.6 (50.67 to 119.15)	76.96 (48.94 to 114.1)	-0.26 (-0.73 to 0.22)
Jordan	603 (383 to 912)	2062 (1280 to 3092)	2.42 (1.93-2.99)	29.39 (18.82 to 44.84)	22.17 (14.07 to 32.84)	-1.06 (-1.87 to 0.25)
Kazakhstan	8090 (5209 to 11959)	8279 (5245 to 12386)	0.02 (-0.09-0.16)	56.18 (36.4 to 82.67)	43.48 (27.73 to 64.91)	-0.99 (-1.56 to 0.42)
Kenya	1191 (741 to 1796)	2740 (1707 to 4148)	1.3 (1.18-1.43)	7.8 (4.98 to 11.54)	7.15 (4.57 to 10.71)	-0.36 (-1.88 to 1.18)
Kiribati	17 (11 to 25)	28 (18 to 42)	0.67 (0.49-0.88)	32.85 (21.43 to 48.41)	30.35 (19.43 to 44.46)	-0.28 (-1.01 to 0.46)
Kuwait	245 (151 to 371)	874 (522 to 1332)	2.58 (2.01-3.2)	19.27 (12.15 to 28.64)	18.46 (11.41 to 27.46)	-0.13 (-1.1 to 0.85)

Kyrgyzstan	1895 (1194 to 2837)	2465 (1514 to 3618)	0.3 (0.16-0.47)	54.88 (34.96 to 81.88)	42.62 (26.64 to 62.57)	-0.94 (-1.52 to 0.34)
Lao People's Democratic Republic	1133 (721 to 1692)	1966 (1239 to 2958)	0.74 (0.53-0.95)	41.15 (26.62 to 61.84)	32.92 (21.01 to 49.33)	-0.89 (-1.57 to 0.22)
Latvia	3628 (2328 to 5432)	2633 (1692 to 3878)	-0.27 (-0.34--0.2)	111.2 (71.16 to 165.2)	91.25 (58.65 to 135.72)	-0.54 (-0.94 to 0.14)
Lebanon	641 (401 to 938)	1125 (697 to 1697)	0.76 (0.52-1.01)	24.54 (15.4 to 35.75)	21.22 (13.17 to 31.87)	-0.5 (-1.37 to 0.38)
Lesotho	233 (147 to 347)	309 (193 to 464)	0.32 (0.14-0.51)	18.02 (11.42 to 26.54)	17.64 (11.2 to 26.64)	0.02 (-0.94 to 0.99)
Liberia	117 (73 to 170)	258 (160 to 382)	1.21 (0.85-1.7)	7.51 (4.7 to 11.19)	6.6 (4.14 to 9.8)	-0.58 (-2.14 to 1)
Libya	620 (388 to 918)	1477 (910 to 2205)	1.38 (1.06-1.72)	23.96 (15.16 to 35.29)	21.67 (13.56 to 32.24)	-0.44 (-1.3 to 0.44)
Lithuania	4765 (3108 to 7038)	4297 (2761 to 6316)	-0.1 (-0.19-0)	112.36 (73.31 to 166.74)	100.79 (64.28 to 148.84)	-0.26 (-0.64 to 0.13)
Luxembourg	179 (115 to 265)	265 (166 to 392)	0.48 (0.32-0.65)	36.26 (23.04 to 53.74)	30.71 (19.2 to 45.47)	-0.6 (-1.22 to 0.03)
Madagascar	667 (415 to 995)	1517 (940 to 2278)	1.27 (0.87-1.77)	8.11 (5.15 to 11.92)	7.86 (4.99 to 11.69)	-0.13 (-1.61 to 1.37)
Malawi	551 (338 to 831)	1031 (633 to 1535)	0.87 (0.55-1.26)	8.76 (5.44 to 13.13)	8.25 (5.2 to 11.96)	-0.28 (-1.71 to 1.16)
Malaysia	3901 (2498 to 5916)	7818 (4858 to 11912)	1 (0.74-1.26)	30.18 (19.49 to 44.9)	25.2 (15.81 to 38.55)	-0.69 (-1.48 to 0.1)
Maldives	34 (22 to 51)	93 (56 to 143)	1.72 (1.26-2.18)	24.34 (15.54 to 36.37)	18.59 (11.38 to 28.08)	-0.98 (-1.87 to 0.08)
Mali	536 (331 to 801)	1217 (731 to 1844)	1.27 (0.88-1.77)	8.31 (5.23 to 12.41)	7.72 (4.78 to 11.57)	-0.28 (-1.75 to 1.21)
Malta	66 (41 to 100)	96 (60 to 142)	0.44 (0.25-0.65)	15.81 (9.8 to 23.83)	14.15 (8.85 to 21.1)	0.36 (-0.64 to 1.37)
Marshall Islands	7 (4 to 11)	12 (7 to 17)	0.65 (0.45-0.89)	27.24 (17.55 to 41.07)	24.17 (15.37 to 36.06)	-0.43 (-1.23 to 0.39)

Mauritania	118 (72 to 178)	206 (125 to 312)	0.74 (0.41-1.11)	7.57 (4.71 to 11.32)	6.27 (3.9 to 9.46)	-0.76 (-2.33 to 0.83)
Mauritius	217 (136 to 328)	341 (216 to 518)	0.57 (0.35-0.83)	22.43 (14.1 to 33.56)	21.21 (13.38 to 32.15)	-0.18 (-1.08 to 0.72)
Mexico	74642 (47327 to 112422)	138749 (87524 to 210487)	0.86 (0.74-0.97)	118.83 (75.48 to 175.93)	108.62 (68.98 to 163.54)	0.25 (-0.12 to 0.62)
Micronesia (Federated States of)	19 (12 to 27)	21 (13 to 32)	0.15 (-0.01-0.32)	28.7 (18.94 to 42.5)	24.06 (15.25 to 35.78)	-0.67 (-1.47 to 0.14)
Monaco	15 (9 to 21)	18 (11 to 26)	0.23 (0.1-0.37)	29.66 (18.46 to 43.15)	28.36 (17.73 to 42.9)	-0.16 (-0.92 to 0.61)
Mongolia	1073 (684 to 1575)	1674 (1048 to 2534)	0.56 (0.4-0.76)	78.27 (50.15 to 116.34)	53.36 (33.64 to 80.5)	-1.59 (-2.1 to -1.09)
Montenegro	531 (335 to 788)	622 (396 to 925)	0.17 (0.06-0.29)	82.26 (51.98 to 121.92)	76.63 (48.82 to 113.06)	-0.27 (-0.73 to 0.2)
Morocco	5180 (3290 to 7693)	9023 (5763 to 13520)	0.74 (0.53-0.98)	29.44 (18.97 to 43.49)	25.13 (16.01 to 37.88)	-0.56 (-1.35 to 0.24)
Mozambique	901 (564 to 1353)	1739 (1082 to 2596)	0.93 (0.63-1.3)	10.02 (6.31 to 14.93)	9.16 (5.86 to 13.32)	-0.38 (-1.73 to 0.99)
Myanmar	10523 (6599 to 15770)	14804 (9358 to 22360)	0.41 (0.22-0.6)	34.56 (21.95 to 51.56)	27.36 (17.33 to 41.37)	-0.96 (-1.69 to -0.22)
Namibia	177 (110 to 263)	284 (177 to 421)	0.6 (0.36-0.86)	18.03 (11.29 to 27.08)	14.66 (9.26 to 21.42)	-0.77 (-1.77 to 0.25)
Nauru	1 (1 to 2)	2 (1 to 2)	0.13 (-0.02-0.3)	22.15 (14.27 to 33.06)	21.97 (14.11 to 32.54)	0.04 (-0.82 to 0.9)
Nepal	1980 (1262 to 3010)	3160 (2018 to 4707)	0.6 (0.37-0.88)	14.48 (9.32 to 21.86)	11.66 (7.47 to 17.13)	-0.06 (-1.15 to 1.05)
Netherlands	5707 (3600 to 8404)	7158 (4604 to 10737)	0.25 (0.11-0.42)	31.43 (19.69 to 46.52)	28.07 (17.74 to 41.65)	-0.47 (-1.22 to 0.29)
New Zealand	1849 (1144 to 2735)	3737 (2396 to 5526)	1.02 (0.8-1.25)	50.7 (31.2 to 74.96)	67.45 (42.34 to 100.06)	0.93 (0.42 to 1.44)
Nicaragua	2605 (1646 to 3892)	5112 (3239 to 7566)	0.96 (0.74-1.18)	108.54 (69.3 to 161.65)	87.64 (55.73 to 128.9)	-0.84 (-1.26 to -0.42)

Niger	494 (300 to 752)	1253 (761 to 1896)	1.54 (1.05-2.11)	8.98 (5.55 to 13.45)	8.16 (5.11 to 12.15)	-0.43 (-1.83 to 1)
Nigeria	4678 (2889 to 7020)	10567 (6431 to 15945)	1.26 (1.14-1.37)	6.37 (4.01 to 9.33)	6.19 (3.89 to 9.17)	-0.19 (-1.85 to 1.49)
Niue	0 (0 to 1)	0 (0 to 1)	-0.14 (-0.25--0.02)	19.03 (11.88 to 28.41)	17.6 (11.35 to 26.33)	-0.24 (-1.21 to 0.73)
North Macedonia	1874 (1196 to 2798)	2234 (1416 to 3277)	0.19 (0.07-0.32)	92.54 (59.17 to 138.25)	78.68 (50.34 to 115.51)	-0.67 (-1.12 to 0.22)
Northern Mariana Islands	7 (4 to 11)	11 (7 to 16)	0.54 (0.28-0.85)	20.22 (12.78 to 29.53)	20.1 (12.94 to 29.58)	0.02 (-0.89 to 0.94)
Norway	5061 (3215 to 7464)	6381 (3970 to 9531)	0.26 (0.2-0.33)	94.2 (59.43 to 139.68)	85.69 (52.79 to 128.39)	-0.2 (-0.64 to 0.24)
Oman	249 (153 to 377)	639 (380 to 976)	1.57 (1.17-2)	21.6 (13.37 to 32.8)	17.34 (10.77 to 25.63)	-0.81 (-1.76 to 0.14)
Pakistan	15498 (9710 to 22978)	27963 (17479 to 41859)	0.8 (0.63-0.98)	19.8 (12.54 to 29.45)	16.62 (10.52 to 24.65)	-0.68 (-1.64 to 0.29)
Palau	2 (2 to 4)	4 (3 to 6)	0.64 (0.41-0.9)	19.51 (12.47 to 29.44)	17.76 (11.38 to 26.48)	-0.32 (-1.28 to 0.65)
Palestine	313 (198 to 467)	811 (500 to 1206)	1.59 (1.24-1.95)	27.63 (17.62 to 40.07)	23.51 (14.92 to 34.69)	-0.59 (-1.41 to 0.24)
Panama	1816 (1147 to 2732)	3365 (2106 to 5023)	0.85 (0.66-1.08)	94.07 (60.32 to 141.01)	79.89 (50.08 to 119.35)	-0.57 (-1.02 to 0.12)
Papua New Guinea	621 (396 to 944)	1559 (969 to 2364)	1.51 (1.2-1.89)	22.47 (14.61 to 33.67)	21.27 (13.38 to 31.91)	-0.14 (-1.02 to 0.75)
Paraguay	2309 (1462 to 3435)	4537 (2886 to 6755)	0.97 (0.79-1.15)	79.52 (50.6 to 118.38)	70.23 (44.88 to 104.69)	-0.42 (-0.91 to 0.06)
Peru	7495 (4877 to 11203)	8284 (5219 to 12227)	0.11 (-0.03-0.27)	46.94 (30.74 to 70.22)	24.32 (15.36 to 35.99)	-2.86 (-3.56 to -2.14)
Philippines	14540 (9193 to 21720)	33690 (21219 to 50197)	1.32 (1.2-1.43)	32 (20.33 to 47.32)	33.64 (21.15 to 49.49)	0.39 (-0.35 to 1.12)
Poland	31105 (19647 to 46045)	27584 (18034 to 40573)	-0.11 (-0.2--0.02)	74.38 (47.41 to 109.79)	49.63 (32.43 to 72.31)	-1.56 (-2.06 to 1.06)

Portugal	1643 (1036 to 2464)	2544 (1642 to 3751)	0.55 (0.35-0.78)	13.56 (8.55 to 20.23)	15.35 (9.67 to 22.68)	0.76 (-0.35 to 1.88)
Puerto Rico	1275 (803 to 1907)	1340 (852 to 2005)	0.05 (-0.07-0.19)	35.36 (22.29 to 53.01)	28.69 (18.03 to 42.47)	-0.73 (-1.47 to 0.01)
Qatar	60 (36 to 91)	379 (230 to 577)	5.26 (4.24-6.48)	19.35 (12.16 to 28.77)	14.39 (9.1 to 21.33)	-1.23 (-2.24 to -0.21)
Republic of Korea	38186 (24199 to 56659)	54297 (34360 to 81383)	0.42 (0.26-0.61)	101.31 (65.42 to 149.86)	70.86 (44.7 to 105.6)	-1.43 (-1.88 to -0.98)
Republic of Moldova	4492 (2910 to 6585)	3918 (2527 to 5926)	-0.13 (-0.22--0.03)	98.81 (64.37 to 144.78)	78.15 (49.91 to 118.04)	-0.97 (-1.41 to -0.53)
Romania	32976 (21221 to 48824)	26928 (17138 to 40069)	-0.18 (-0.28--0.09)	123.8 (79.58 to 182.85)	96.44 (61.01 to 144.4)	-0.61 (-1 to -0.22)
Russian Federation	91270 (57936 to 135498)	82240 (52206 to 122218)	-0.1 (-0.15--0.04)	53.61 (34.19 to 79.26)	42.67 (26.78 to 63.66)	-0.91 (-1.5 to -0.31)
Rwanda	508 (320 to 751)	804 (492 to 1198)	0.58 (0.33-0.87)	11.07 (7.13 to 16.4)	8.59 (5.42 to 12.87)	-1.1 (-2.4 to 0.22)
Saint Kitts and Nevis	16 (10 to 24)	23 (14 to 34)	0.43 (0.25-0.62)	45.97 (29.19 to 69.45)	32.9 (20.88 to 49.17)	-1.19 (-1.86 to -0.52)
Saint Lucia	40 (25 to 60)	63 (40 to 93)	0.57 (0.37-0.8)	38.31 (24.34 to 57.55)	30.41 (19.29 to 45.29)	-0.74 (-1.46 to -0.02)
Saint Vincent and the Grenadines	33 (21 to 50)	42 (27 to 63)	0.26 (0.11-0.43)	40.06 (25.05 to 59.86)	32.94 (21.02 to 49.35)	-0.65 (-1.34 to 0.05)
Samoa	26 (16 to 38)	37 (23 to 55)	0.45 (0.28-0.65)	23.02 (14.54 to 34.93)	21.33 (13.56 to 31.89)	-0.25 (-1.13 to 0.64)
San Marino	8 (5 to 12)	12 (8 to 18)	0.57 (0.4-0.78)	26.83 (16.98 to 40.21)	25.78 (16.11 to 39.2)	-0.19 (-0.99 to 0.63)
Sao Tome and Principe	7 (4 to 10)	11 (7 to 16)	0.57 (0.3-0.88)	7.33 (4.5 to 10.89)	5.97 (3.72 to 9.08)	-0.85 (-2.44 to 0.76)
Saudi Arabia	2639 (1651 to 3960)	6991 (4296 to 10650)	1.65 (1.27-2.13)	27.99 (17.78 to 41.28)	20.83 (13.35 to 31.21)	-1.04 (-1.87 to -0.21)
Senegal	430 (260 to 654)	851 (520 to 1252)	0.98 (0.65-1.43)	7.73 (4.84 to 11.58)	7.02 (4.37 to 10.26)	-0.4 (-1.92 to 1.14)

Serbia	9892 (6447 to 14807)	9615 (6201 to 14064)	-0.03 (-0.12-0.07)	89.63 (58.4 to 134.38)	78.37 (49.77 to 114)	-0.34 (-0.79 to 0.11)
Seychelles	15 (10 to 23)	26 (16 to 38)	0.68 (0.44-0.92)	24.96 (15.89 to 36.96)	21.59 (13.49 to 32.7)	-0.58 (-1.44 to 0.29)
Sierra Leone	219 (136 to 330)	488 (302 to 736)	1.23 (0.85-1.67)	7.64 (4.81 to 11.36)	7.54 (4.75 to 11.22)	-0.03 (-1.52 to 1.49)
Singapore	2374 (1514 to 3504)	5222 (3307 to 7830)	1.2 (0.97-1.46)	83.95 (54.52 to 124.04)	69.35 (43.78 to 103.26)	-0.73 (-1.2 to -0.25)
Slovakia	8240 (5314 to 12433)	8341 (5369 to 12377)	0.01 (-0.09-0.11)	144.25 (92.36 to 217.22)	109.65 (69.65 to 162.57)	-1.04 (-1.4 to -0.67)
Slovenia	2108 (1367 to 3102)	2352 (1540 to 3502)	0.12 (0-0.23)	90.97 (58.5 to 133.09)	74.46 (47.44 to 111.6)	-0.45 (-0.9 to -0.01)
Solomon Islands	56 (35 to 82)	117 (74 to 175)	1.11 (0.86-1.38)	26.66 (16.93 to 39.23)	24.64 (15.81 to 36.5)	-0.25 (-1.06 to 0.56)
Somalia	434 (267 to 648)	1155 (707 to 1730)	1.66 (1.22-2.2)	9.42 (5.97 to 14.13)	9.06 (5.84 to 13.48)	-0.18 (-1.52 to 1.19)
South Africa	3820 (2396 to 5752)	5874 (3645 to 8747)	0.54 (0.41-0.67)	12.75 (8.2 to 19.01)	10.9 (6.96 to 16.13)	-0.49 (-1.66 to 0.69)
South Sudan	319 (197 to 476)	510 (307 to 776)	0.6 (0.33-0.91)	8 (5.01 to 12.05)	7.83 (4.86 to 11.85)	-0.15 (-1.63 to 1.35)
Spain	12326 (7826 to 18473)	13995 (8825 to 21125)	0.14 (0-0.3)	26.4 (16.61 to 39.34)	19.93 (12.47 to 30.54)	-1.16 (-2.03 to -0.27)
Sri Lanka	3462 (2118 to 5198)	5104 (3192 to 7740)	0.47 (0.27-0.71)	23.47 (14.48 to 35.27)	20.7 (12.99 to 31.41)	-0.5 (-1.39 to 0.4)
Sudan	3693 (2359 to 5490)	7134 (4489 to 10840)	0.93 (0.67-1.23)	29.99 (19.31 to 44.16)	25.75 (16.45 to 38.76)	-0.56 (-1.34 to 0.24)
Suriname	147 (93 to 216)	229 (146 to 342)	0.56 (0.39-0.77)	46.14 (29.48 to 68.05)	37.38 (23.88 to 55.72)	-0.7 (-1.34 to -0.05)
Sweden	4117 (2559 to 6292)	5495 (3456 to 8319)	0.33 (0.21-0.47)	35.27 (21.6 to 54.22)	37.03 (23.16 to 56.22)	0.19 (-0.45 to 0.83)
Switzerland	2559 (1632 to 3742)	3585 (2319 to 5424)	0.4 (0.26-0.57)	28.63 (18.01 to 42.19)	27.08 (17.13 to 40.99)	-0.29 (-0.96 to 0.38)

Syrian Arab Republic	1951 (1229 to 2932)	3152 (1964 to 4688)	0.62 (0.4-0.85)	26.47 (16.77 to 39.4)	22.06 (13.87 to 32.73)	-0.75 (-1.6 to 0.11)
Taiwan (Province of China)	4534 (2931 to 6646)	5863 (3705 to 8645)	0.29 (0.1-0.5)	25.03 (16.33 to 36.67)	17.04 (10.65 to 25.05)	-1.02 (-1.97 to -0.06)
Tajikistan	1841 (1162 to 2721)	3535 (2163 to 5204)	0.92 (0.7-1.17)	51.71 (32.75 to 77.5)	46.79 (29.18 to 68.97)	-0.36 (-0.95 to 0.23)
Thailand	17564 (11048 to 26194)	20865 (13172 to 30284)	0.19 (0.03-0.37)	36.67 (23.26 to 54.46)	22.28 (13.93 to 32.29)	-1.99 (-2.78 to -1.2)
Timor-Leste	183 (113 to 270)	309 (194 to 468)	0.69 (0.49-0.93)	37 (23.45 to 54.47)	31.39 (19.92 to 47.3)	-0.68 (-1.38 to 0.03)
Togo	196 (120 to 296)	468 (289 to 704)	1.38 (0.94-1.93)	7.63 (4.78 to 11.3)	7.38 (4.59 to 11.15)	-0.21 (-1.71 to 1.32)
Tokelau	0 (0 to 0)	0 (0 to 0)	-0.15 (-0.25--0.04)	23.31 (15 to 34.53)	19.62 (12.46 to 29.38)	-0.63 (-1.52 to 0.27)
Tonga	17 (11 to 25)	19 (12 to 28)	0.15 (0.02-0.29)	24.93 (15.7 to 36.65)	22.38 (14.13 to 32.77)	-0.39 (-1.24 to 0.46)
Trinidad and Tobago	405 (257 to 597)	540 (338 to 813)	0.33 (0.16-0.51)	39.78 (25.29 to 58.39)	32.28 (20.09 to 48.46)	-0.73 (-1.42 to -0.03)
Tunisia	957 (595 to 1445)	1793 (1133 to 2650)	0.87 (0.58-1.2)	15.2 (9.32 to 22.82)	13.76 (8.76 to 20.26)	-1.17 (-2.21 to -0.12)
Turkey	13953 (8850 to 21121)	22760 (14568 to 34290)	0.63 (0.42-0.86)	31.51 (20.23 to 47.18)	24.69 (15.86 to 36.93)	-0.04 (-0.78 to 0.71)
Turkmenistan	1309 (816 to 1978)	2055 (1308 to 3027)	0.57 (0.38-0.78)	51.57 (33 to 76.78)	42.74 (27.5 to 63.18)	-0.7 (-1.3 to -0.1)
Tuvalu	2 (1 to 3)	2 (1 to 4)	0.18 (0.04-0.35)	25.23 (16.38 to 37.74)	21.11 (13.52 to 31.82)	-0.63 (-1.49 to 0.23)
Uganda	911 (576 to 1375)	1996 (1227 to 3025)	1.19 (0.83-1.64)	8.35 (5.31 to 12.77)	7.57 (4.74 to 11.09)	-0.46 (-1.92 to 1.02)
Ukraine	49383 (30838 to 72813)	38586 (23968 to 58174)	-0.22 (-0.31--0.11)	77.63 (48.07 to 115.49)	63.56 (39.29 to 95.18)	-0.82 (-1.31 to -0.33)
United Arab Emirates	256 (156 to 395)	1722 (1044 to 2649)	5.72 (4.47-7.23)	21.58 (13.64 to 32.5)	17.39 (11.1 to 25.99)	-0.73 (-1.67 to 0.22)

United Kingdom	53131 (33722 to 78313)	119580 (76738 to 171896)	1.25 (1.13- 1.38)	73.63 (46.35 to 108.69)	136.51 (86.4 to 199.28)	-0.2 (- 0.59 to 0.19)
United Republic of Tanzania	1387 (854 to 2070)	2991 (1830 to 4478)	1.16 (0.81- 1.58)	8 (5.02 to 11.94)	7.45 (4.68 to 11.15)	-0.28 (- 1.77 to 1.24)
United States of America	178220 (110762 to 268941)	203315 (134001 to 295522)	0.14 (0- 0.29)	62.22 (38.5 to 93.6)	48.44 (31.5 to 70.22)	0.47 (- 0.13 to 1.07)
United States Virgin Islands	41 (26 to 62)	47 (30 to 70)	0.13 (- 0.01-0.3)	40.71 (25.72 to 61.1)	34.27 (21.6 to 51.26)	-0.54 (- 1.22 to 0.15)
Uruguay	604 (379 to 888)	683 (445 to 1013)	0.13 (- 0.01-0.27)	17.47 (10.94 to 25.67)	15.85 (10.18 to 23.68)	-0.35 (- 1.37 to 0.68)
Uzbekistan	7003 (4483 to 10306)	13122 (8297 to 19677)	0.87 (0.66- 1.11)	48.65 (31.48 to 73.09)	44.27 (28.07 to 66.34)	-0.36 (- 0.96 to 0.25)
Vanuatu	29 (19 to 44)	64 (40 to 95)	1.17 (0.92- 1.45)	30.63 (19.59 to 45.12)	28.79 (18.32 to 42.51)	-0.19 (- 0.94 to 0.57)
Venezuela (Bolivarian Republic of)	14575 (9279 to 21739)	25850 (16042 to 38730)	0.77 (0.59- 0.96)	103.24 (65.91 to 153.88)	85.44 (53.18 to 127.54)	-0.75 (- 1.18 to - 0.32)
Viet Nam	15638 (9955 to 23350)	27633 (17234 to 42008)	0.77 (0.53- 1.02)	32.15 (20.6 to 48.03)	25.93 (16.26 to 39.45)	-0.82 (- 1.59 to - 0.04)
Yemen	2306 (1457 to 3447)	5761 (3655 to 8615)	1.5 (1.15- 1.87)	32.79 (21 to 48.53)	29.09 (18.69 to 42.92)	-0.43 (- 1.18 to 0.32)
Zambia	465 (293 to 706)	922 (571 to 1402)	0.98 (0.66- 1.35)	9.26 (5.86 to 13.85)	7.33 (4.63 to 11.03)	-0.94 (- 2.35 to 0.5)
Zimbabwe	969 (594 to 1446)	1709 (1052 to 2588)	0.76 (0.5- 1.07)	14.51 (9.27 to 21.47)	15.62 (9.78 to 23.34)	0.42 (- 0.65 to 1.49)

Supplement 2

The global, regional, and national burden of gallbladder and biliary diseases in 204 countries and territories, 1990 to 2019: a systematic analysis for the Global Burden of Disease Study 2019

Fig. S1: The relative change in the number of YLDs cases of GABD from 1990 to 2019.....	2
Fig. S2: Levels and trends in all ages prevalent cases of GABD across 21 GBD regions by sex.....	3
Fig. S3: Levels and trends in all ages YLDs cases of GABD across 21 GBD regions by sex.....	4
Fig.S4: Levels and trends in age-standardized prevalence rates of GABD across 21 GBD regions by sex.....	5
Fig. S5: Levels and trends in age-standardized YLDs rates of GABD across 21 GBD.....	6
Fig.S6: Age-specific numbers and rates of prevalent cases of GABD by sex, 2019.....	7
Fig. S7: Age-specific numbers and rates of YLDs cases of GABD by sex, 2019.....	8
Fig. S8: The correlation between EAPC and ASPR in 1990 and HDI in 2021 of gallbladder and biliary diseases	9
Fig. S9: The correlation between EAPC and ASYR in 1990 and HDI in 2021 of gallbladder and biliary diseases	10

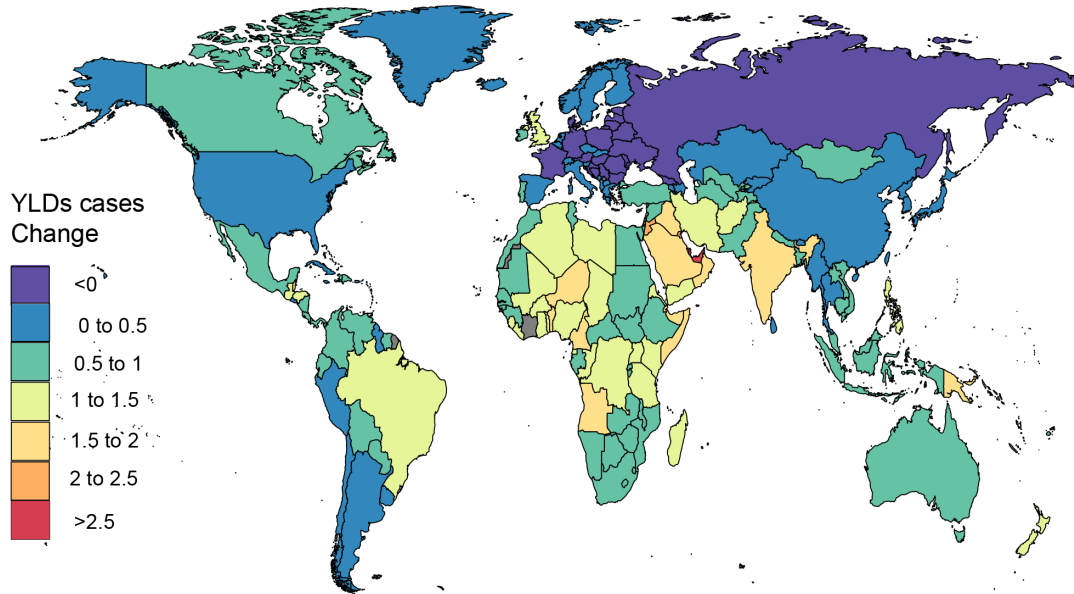


Fig. S1: The relative change in the number of YLDs cases of GABD from 1990 to 2019. YLD: Years lived with disability; GABD, gallbladder and biliary diseases.

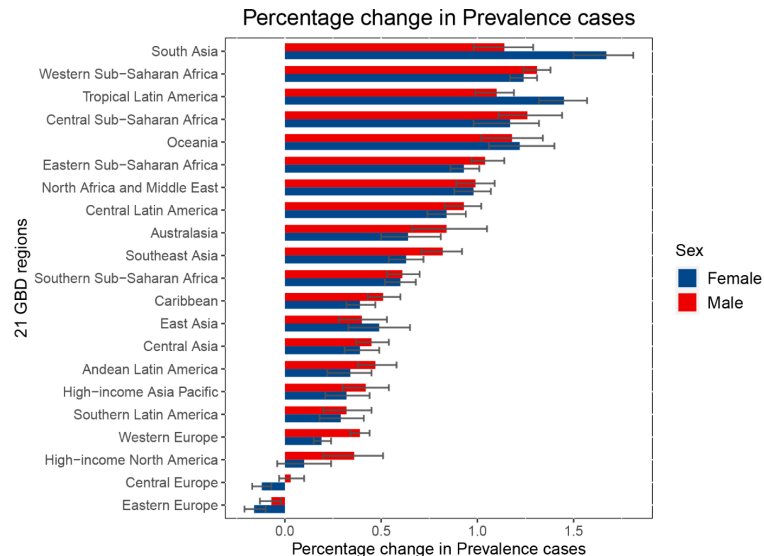
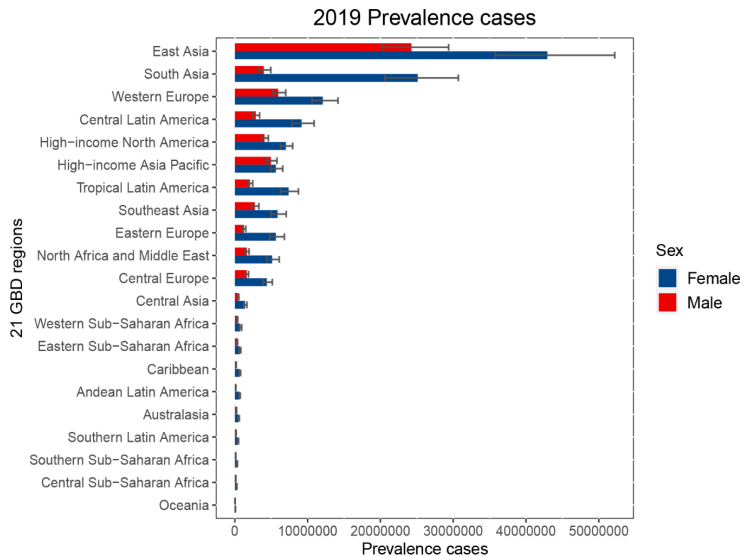


Fig. S2: Levels and trends in all ages prevalent cases of GABD across 21 GBD regions by sex: (A) The prevalence numbers of GBTC in 2019. (B) The percentage change in prevalence numbers of GABD from 1990 to 2019. GBD, Global Burden of Diseases, Injuries, and Risk Factors Study; GABD, gallbladder and biliary diseases.

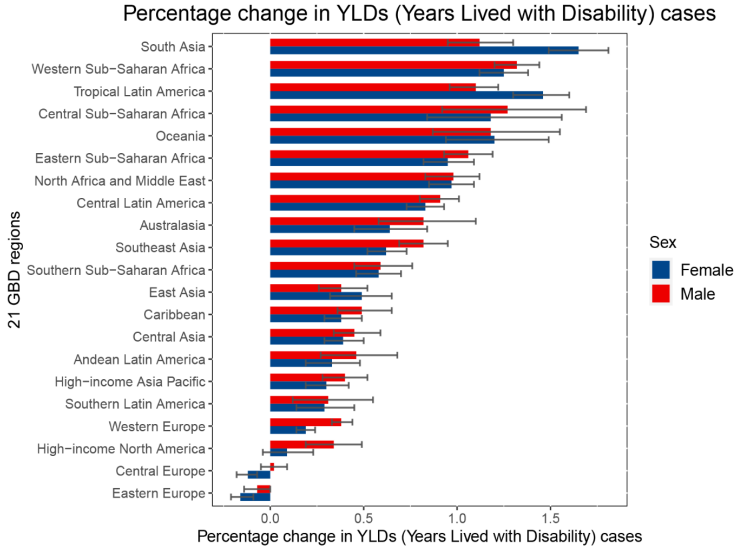
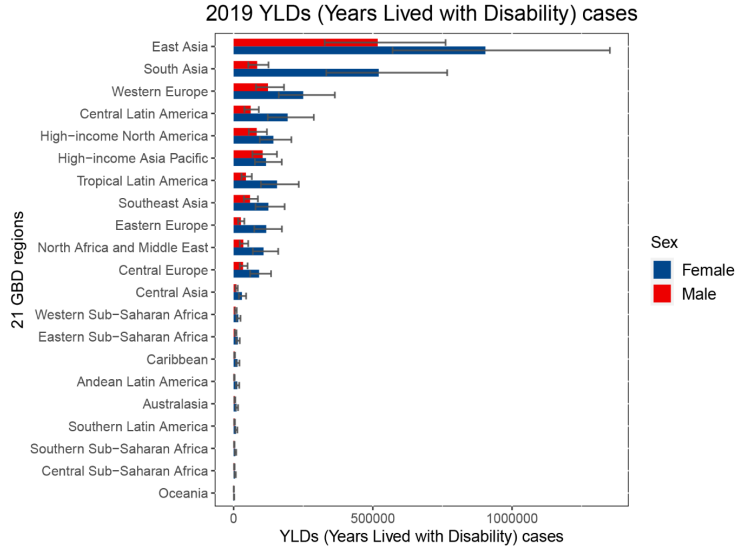


Fig. S3: Levels and trends in all ages YLDs cases of GABD across 21 GBD regions by sex: (A) The YLDs numbers of GABD in 2019. (B) The percentage change in YLDs cases of GABD from 1990 to 2019. GBD, Global Burden of Diseases, Injuries, and Risk Factors Study; GABD, gallbladder and biliary diseases; YLD: Years lived with disability.

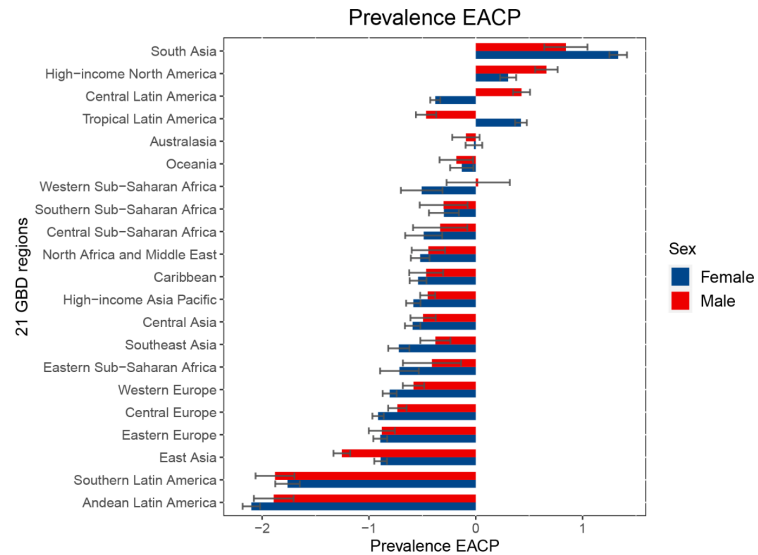
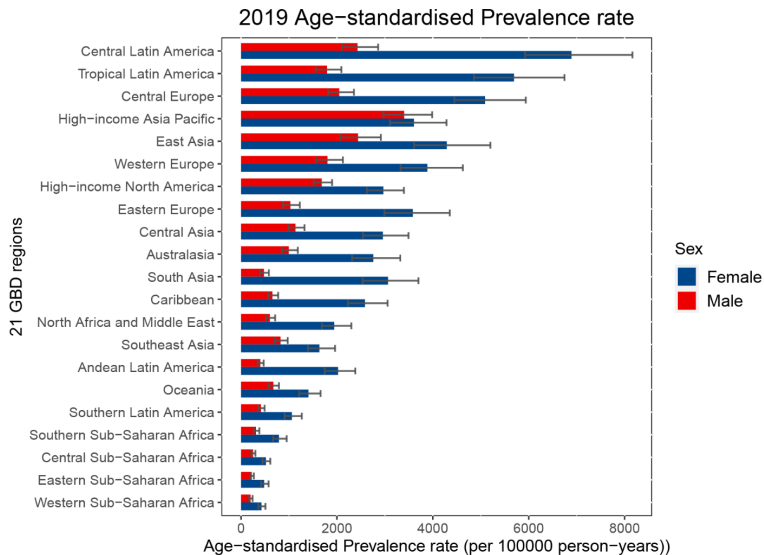


Fig.S4: Levels and trends in age-standardized prevalence rates of GABD across 21 GBD regions by sex: (A) The ASPR of GABD in 2019. (B) The percentage change in ASPR of GBTC from 1990 to 2019. GBD, Global Burden of Diseases, Injuries, and Risk Factors Study; GABD, gallbladder and biliary diseases; ASPR, age-standardized prevalence rate.

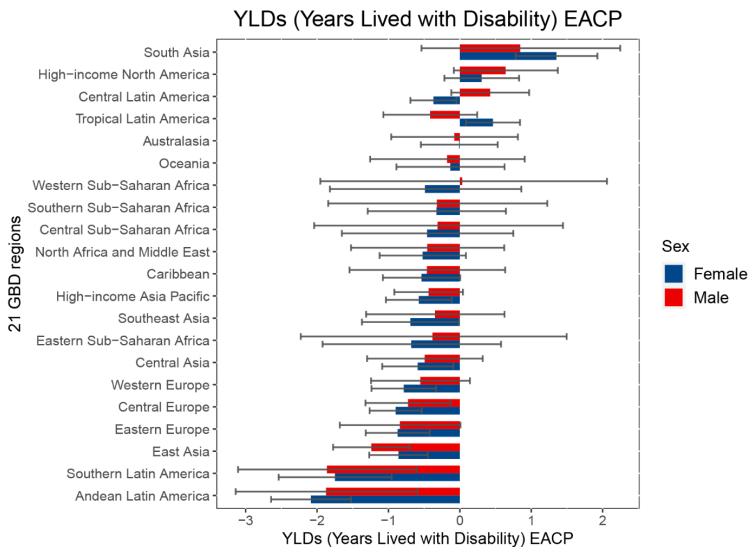
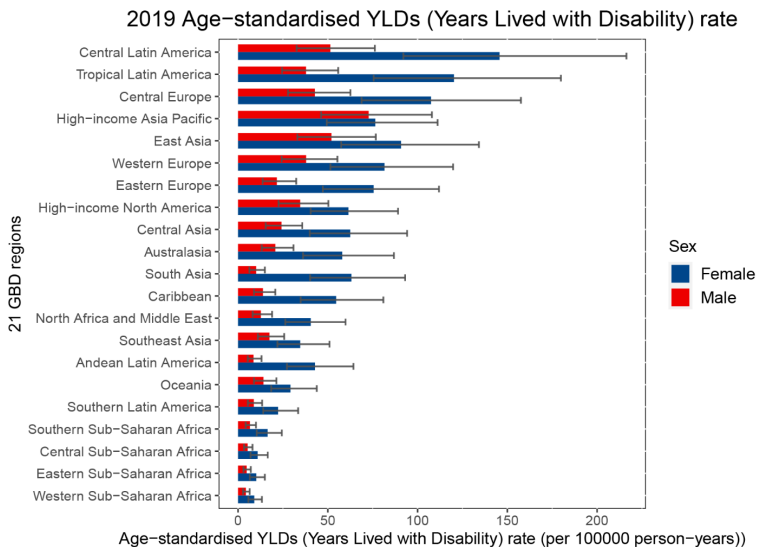


Fig. S5: Levels and trends in age-standardized YLDs rates of GABD across 21 GBD regions by sex: (A) The YLDs rates of GABD in 2019. (B) The percentage change in YLDs rates of GABD from 1990 to 2019. GBD, Global Burden of Diseases, Injuries, and Risk Factors Study; GABD, gallbladder and biliary diseases; YLD: Years lived with disability.

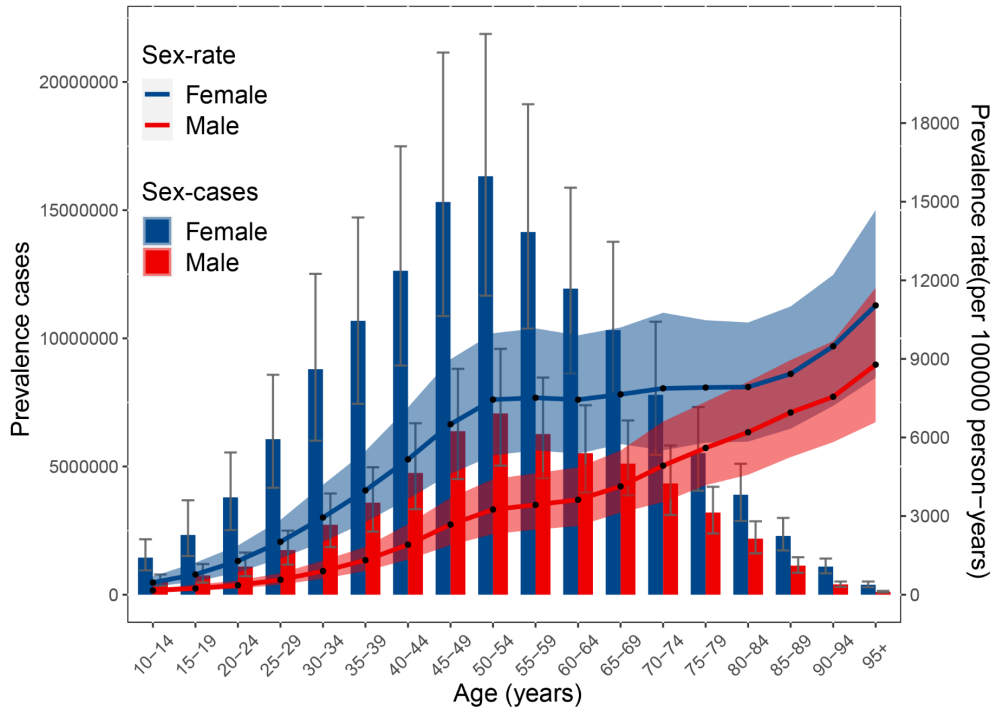


Fig.S6: Age-specific numbers and rates of prevalent cases of GABD by sex, 2019. GABD, gallbladder and biliary diseases.

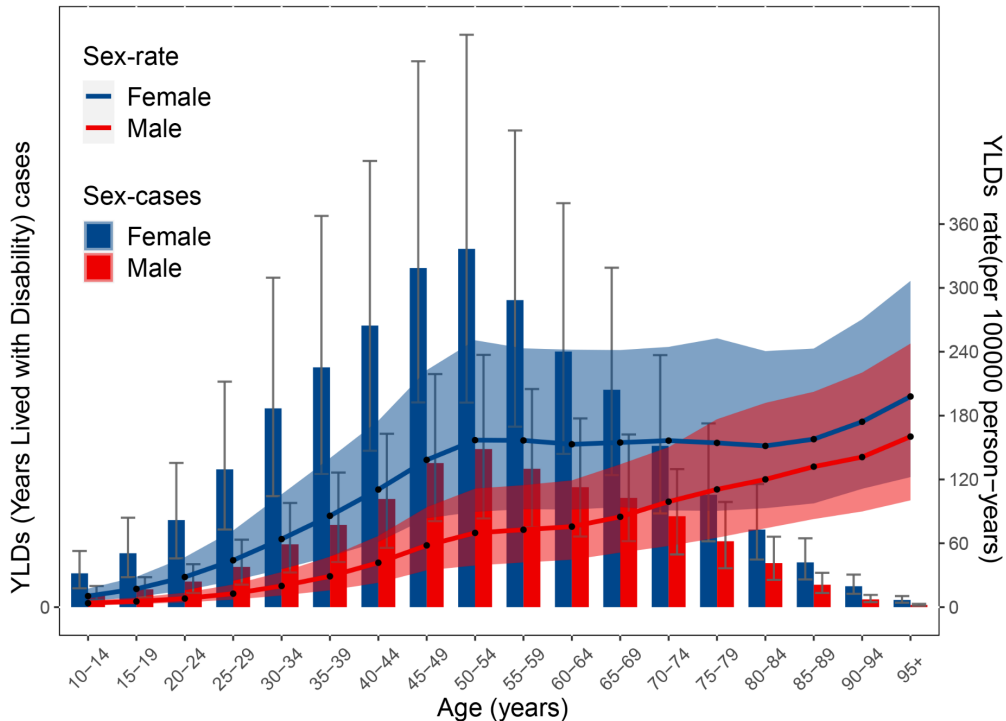


Fig. S7: Age-specific numbers and rates of YLDs cases of GABD by sex, 2019. GABD, gallbladder and biliary diseases; YLD: Years lived with disability.

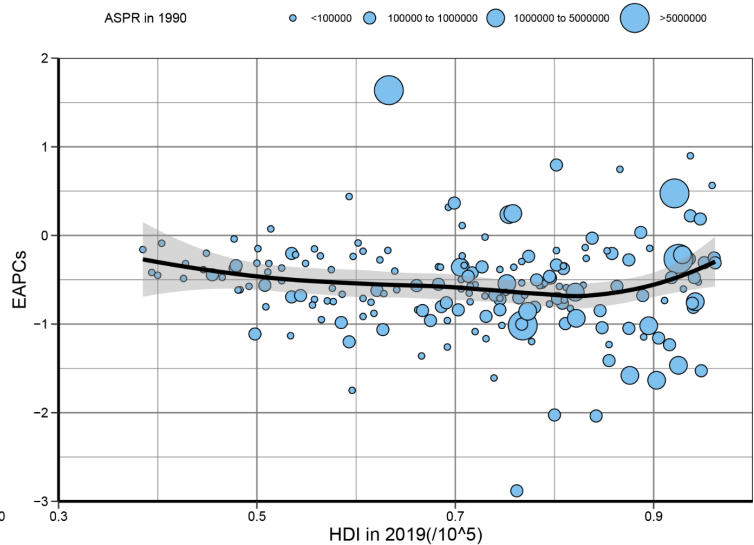
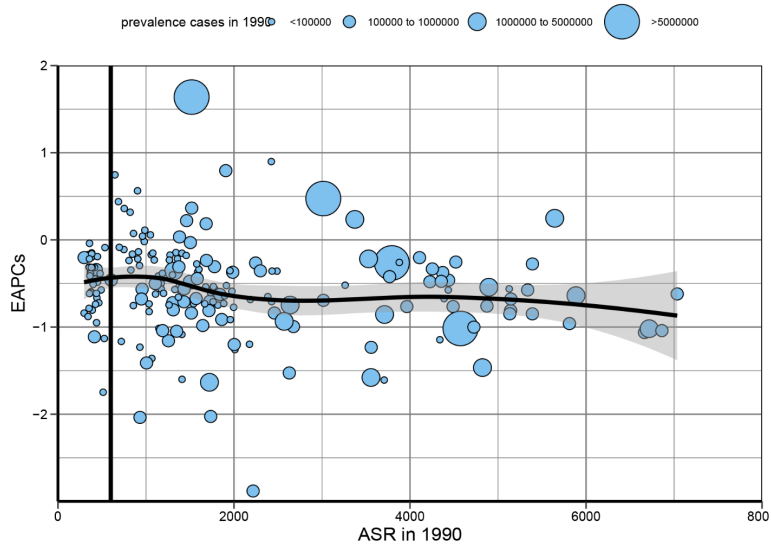


Fig. S8: The correlation between EAPC and (A) gallbladder and biliary diseases ASPR in 1990 and (B) HDI in 2021. The circles represent countries that were available on HDI data. The size of the circle is increased with the cases of gallbladder and biliary diseases. The ρ indices and p values presented in (A) and (B) were derived from Pearson correlation analysis. ASPR, Age-standardized prevalence rate; GABD, gallbladder and biliary diseases; EAPC, Estimated annual percentage change; HDI, human development index; ASR, age-standardized prevalence rate.

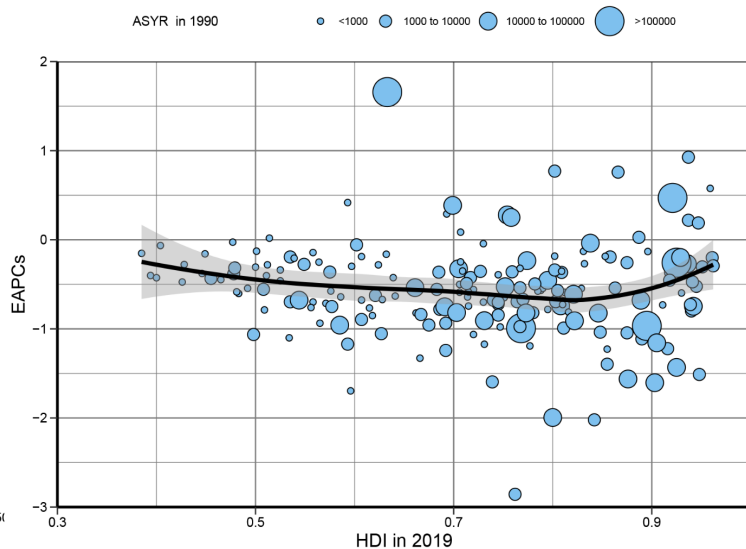
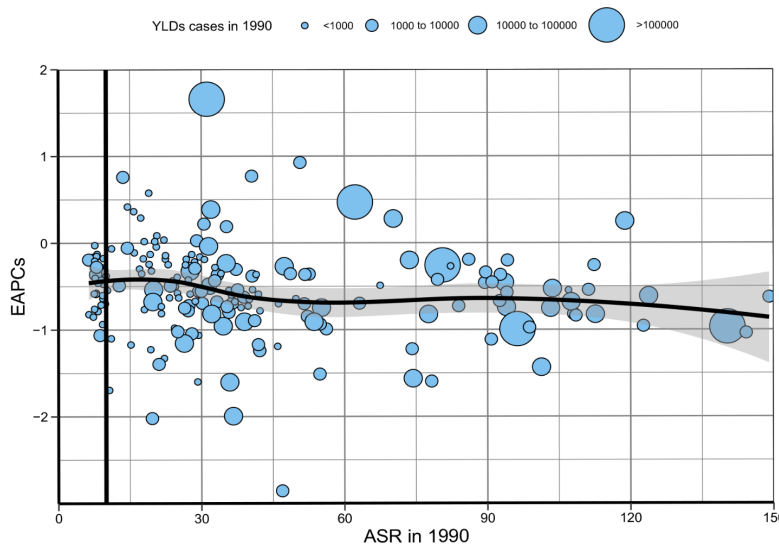


Fig. S9: The correlation between EAPC and (A) gallbladder and biliary diseases ASYR in 1990 and (B) HDI in 2021. The circles represent countries that were available on HDI data. The size of the circle is increased with the cases of gallbladder and biliary diseases. The ρ indices and p values presented in (A) and (B) were derived from Pearson correlation analysis. ASYR, Age-standardized Years lived with disability rate; GABD, gallbladder and biliary diseases; EAPC, Estimated annual percentage change; HDI, human development index; ASR, age-standardized rate.